



**The Ontario Line
Lakeshore East Joint Corridor
Early Works
Construction Liaison Committee**

April 18, 2024

LAND ACKNOWLEDGMENT

Treaties and Reserves in the Greater Golden Horseshoe



Let us take a moment to acknowledge we are on lands that have been, and continue to be, home to many Indigenous Peoples including the Anishnabeg, the Haudenosaunee and the Huron-Wendat peoples.

We are all Treaty people. Many of us have come here as settlers, as immigrants or involuntarily as part of the trans-Atlantic slave trade, in this generation, or generations past.

We acknowledge the historic and continued impacts of colonization and the need to work towards meaningful reconciliation with the original caretakers of this land.

We acknowledge that Metrolinx operates on territories and lands covered by many treaties that affirm and value the rights of Indigenous communities, Nations and Peoples.

We understand the importance of working towards reconciliation with the original caretakers of this land. At Metrolinx, we will conduct business in a manner that is built on a foundation of trust, respect and collaboration.

Agenda

1. Welcome:

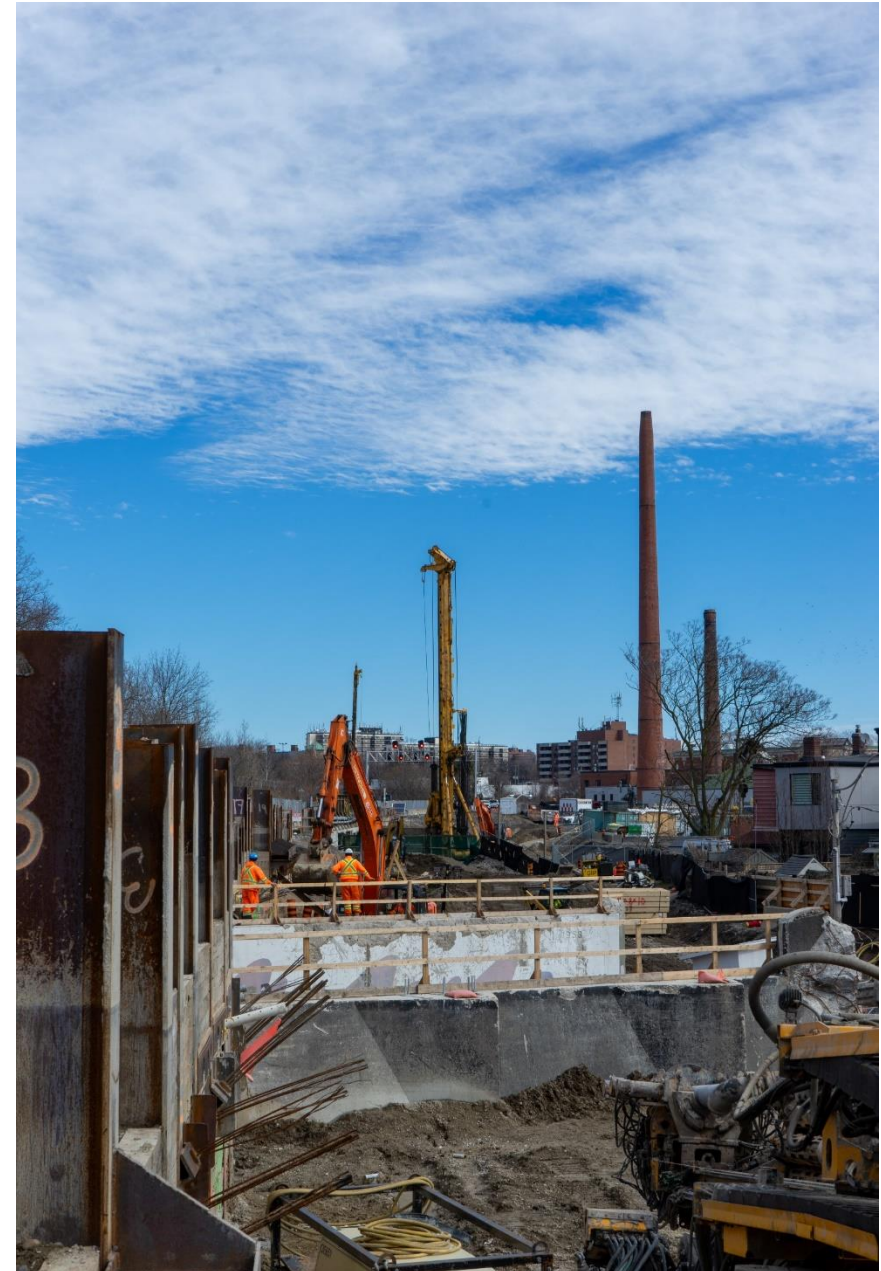
- Land Acknowledgement
- Safety Moment
- Action Items
- Complaints and Issues Tracker

2. Noise and Vibration Update - April 2024

3. Construction Updates

- Bridge updates
- In-Corridor Work
- 2024 lookahead
- Eastern Avenue Bridge
- Transit Oriented Community (TOC)

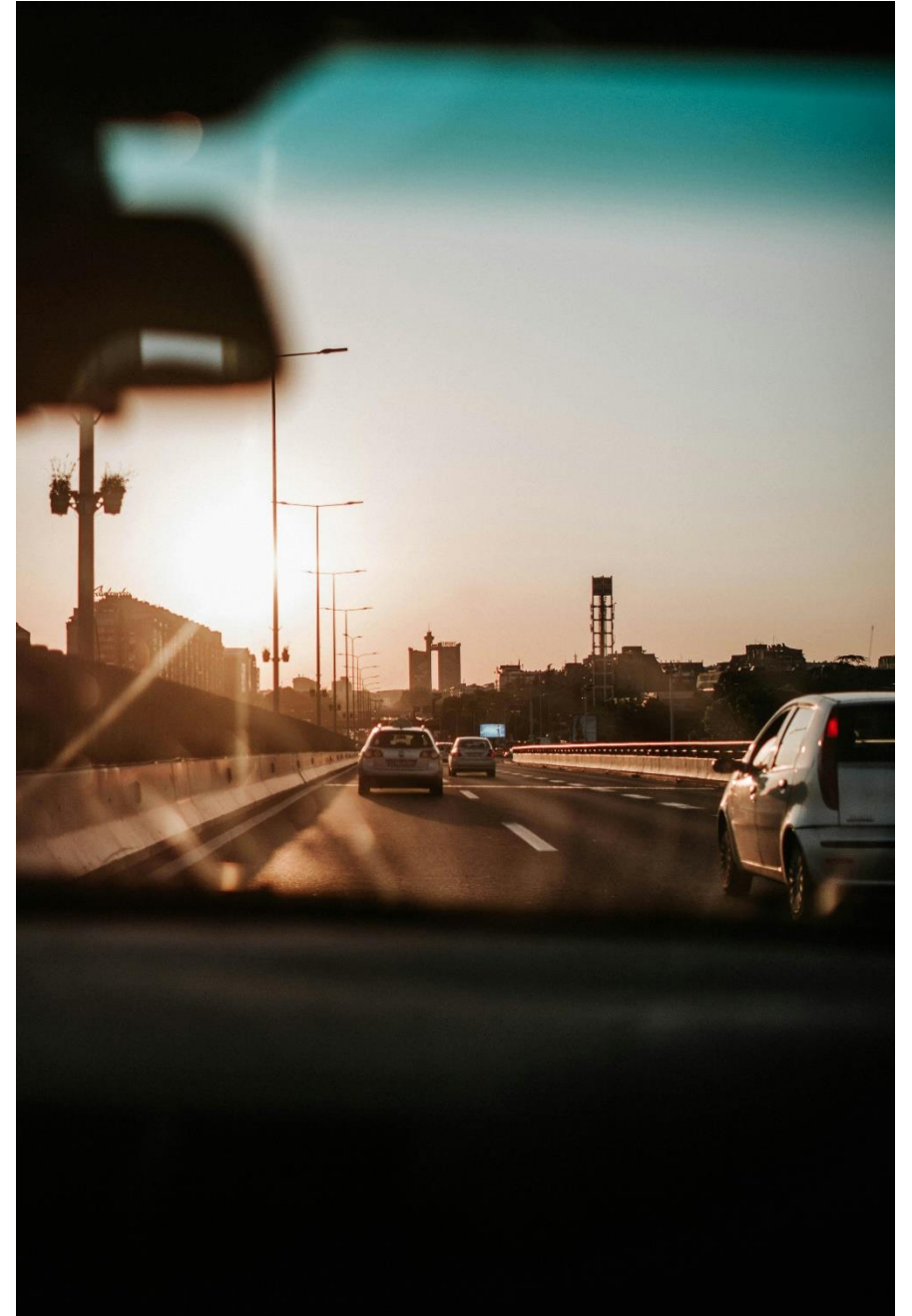
4. Discussion/Next CLC



Safety Moment - Sun glare

Be ready for the low sun during mornings and evenings

- When driving, make sure windshield is clean to reduce glare.
- Use the sun visor.
- Drive to conditions - increase following distance and follow the speed limit.
- Wear sunglasses while driving or cycling to protect your own vision and to see better.
- Be extra attentive for increased pedestrians and cyclist volumes during rush hour



March CLC Action Items - Completed

#	Action	Response	Status
1	Metrolinx to number the action items for the next CLC and mark noise and vibration reporting, one-year lookahead, and BIA street assets (brick) actions as ongoing instead of completed.	Metrolinx has adopted these changes.	Completed
2	Metrolinx to adjust action item to clarify that residents want to know the response times for when mitigations are implemented.	Metrolinx has agreed to provide information about when mitigations are implemented in response to noise complaints.	Completed
3	Metrolinx to prepare graphics of noise barriers and retaining wall transition from six -eleven metres at Logan Ave.	Metrolinx is working to have this graphic prepared for the April CLC. Update: Graphic on slide 31 of the presentation.	Completed
6	Metrolinx to confirm if an LSE six-month lookahead can shared via the Metrolinx newsletter.	The newsletter is not the correct forum to share construction lookaheads. The purpose of the newsletter is to promote local events and businesses and share broader project-wide updates with the community. Metrolinx will continue to update the six-month lookahead monthly and issue it online as part of the CLC presentation.	Completed
8	Dufferin Construction to investigate if additional sidewalk and street clean-up is required at the bridges	Street sweeping is performed daily with a sweeper truck and skid-steerer with a sweeper attachment. Hand sweeping is done regularly in and around the access roads to clean dirt or debris from the site. Dufferin Construction reviewed the areas within the site and determined no additional clean-up was required. Dufferin Construction and Metrolinx will continue to monitor the sites and perform cleaning activities as needed.	Completed

March CLC Action Items - Completed

#	Action	Response	Status
9	Dufferin Construction and Metrolinx to investigate possibility of starting night shift earlier to reduce disruption to residents.	There are certain activities that crews can only do safely when there is no train activity in the corridor (midnight - 5 a.m.). The night shift is scheduled from 8 p.m. - 5 a.m. to maximize the hours of work when trains are not running. The work is scheduled to increase productivity and ensure construction is completed in the fastest and most efficient way possible. Dufferin Construction also considers workers personal lives and well-being when scheduling night shifts - the 8 p.m. - 5 a.m. time slot gives workers an opportunity to spend time with their families between each shift. Metrolinx and Dufferin Construction will continue to implement mitigations and engage with the Community to minimize disruption from overnight work.	Completed
10	Metrolinx to confirm if "cyclist dismount" signs can be installed at Queen St. E. Bridge.	Dufferin Construction has ordered "cyclist dismount" signs and is aiming to install the signs the week of April 22.	Completed
11	Dufferin Construction to review road and lighting conditions at Dundas St. E. bridge. Dufferin to report out on pothole repairs and lighting at the next CLC in April.	Dufferin Construction has not removed any of the lighting around the Dundas St. E. bridge. The lighting is the same as pre-construction conditions. The potholes on Dundas St. E. were repaired.	Completed
12	Metrolinx to provide a graphic showing future track configuration south of Gerrard St. E. bridge to show OL tracks.	Metrolinx is working to provide this graphic as part of the May CLC presentation. Update: Graphic on slide 35 of the presentation.	Completed

March CLC Action Items - Completed

#	Action	Response	Status
13	Metrolinx to confirm who is responsible for cleaning graffiti at the Logan Ave. bridge.	Metrolinx can confirm graffiti removal is not the responsibility of the contractor and the City owns and maintains the sidewalk within the right-of-way.	Completed
14	Metrolinx and Dufferin Construction to facilitate further discussion with the community on the hours of work for retaining wall construction.	Metrolinx and Dufferin Construction have confirmed the work schedule for the retaining wall construction. The work schedule is reduced from six (6) nights, to five (5) nights. Work will take place from Sunday to Thursday and will follow the same schedule as existing overnight work in the corridor.	Completed

March CLC Action Items - Pending

#	Action	Response	Status
4	Metrolinx and the BIA to coordinate a walkabout to discuss BIA assets at Queen St. E. bridge.	Metrolinx is working on coordinating a time, over the next couple of months, to schedule a walk with the BIA, City staff and the contractor to go over BIA assets around the Queen St. E. bridge	Pending
5	Metrolinx to confirm if the BIA mural can be stored at the Thackeray yard.	Metrolinx is investigating hoarding plans for the north side of the rail corridor to confirm if there is a feasible location to install the BIA mural. Metrolinx will continue to keep the Riverside BIA informed on possible options.	Pending
7	Metrolinx to hold an in-person meeting on bike safety at the Community Office.	Metrolinx is planning the in-person bike safety meeting at the community office with bike advocacy groups and the local BIAs for the month of May.	Pending

February CLC Action Items - Pending

#	Action	Response	Status
15	Metrolinx to provide an update on Jimmie Simpson Park banner.	Metrolinx is having ongoing discussions with staff at Jimmie Simpson Community Centre and will continue to update the CLC membership.	Pending
16	Metrolinx to coordinate with IO to determine presence at future meetings.	Metrolinx is continuing to have ongoing conversations with IO and hope to have an update at the May CLC meeting.	Pending
17	Metrolinx to provide an update on the tree removals planned for the north side of the rail corridor. Specifically, residents want clarity on what trees are being removed and how many.	Metrolinx is expecting to receive the updated arborist report for the north side of the corridor next month and will provide a summary to the membership at the May CLC meeting.	Pending
18	Metrolinx and Dufferin Construction to explore the installation of a temporary noise barrier at the end of First Avenue or along the top of the rail corridor, since the trees have been removed from that area.	Metrolinx is currently investigating the feasibility of installing a temporary noise barrier at the end of First Ave and will keep the CLC membership updated when a decision is made.	Pending

Complaints and Issues Tracker

#	Complaint / Issue	Resolution
1	<p>Noise</p> <ul style="list-style-type: none"> Queen St. E. Bridge Mar 19, 2024 	<ul style="list-style-type: none"> Complaint received about loud worker conversation near residence. Action: Crews needed at that location to ensure safety. Contractor reminded workers to be mindful and respectful of neighbours. Reminder was issued at the same time the complaint was received.
2	<p>Traffic Safety</p> <ul style="list-style-type: none"> Intersection of Logan Ave. and Dundas St. E. Mar 22, 2024 	<ul style="list-style-type: none"> Complaint received about PDO sitting in vehicle and not ensuring pedestrian safety at intersection. Action: The Contractor checked on PDO to ensure they were not in vehicle. Contractor staff is also on site to help.
3	<p>Noise and vibration</p> <ul style="list-style-type: none"> Galt Ave near corridor Mar 22, 2024 	<ul style="list-style-type: none"> Complaint received about noise and vibration from work in rail corridor around Galt Ave and Gerrard Square. Action: Contractor investigated and confirmed noise/vibration was from overnight utility work in the corridor. Contractor was unable to install noise barrier due to limited space between the fence line and excavation. The Contractor has installed a noise and vibration monitor and Metrolinx offered the resident noise mitigation the following day.
4	<p>Construction signage</p> <ul style="list-style-type: none"> Queen and Broadview Mar 25, 2024 	<ul style="list-style-type: none"> Complaint received about construction warning sign obstructing sidewalk. Action: The Contractor went to investigate and confirmed the sign did not belong to them. The sign was moved to ensure it was not a hazard on the sidewalk.
5	<p>Access</p> <ul style="list-style-type: none"> Queen/DeGrassi Mar 25, 2024 	<ul style="list-style-type: none"> Complaint received from business about construction pylons taking up parking spots over the weekend when no work was taking place. Action: Pylons were removed.
6	<p>Vibration</p> <ul style="list-style-type: none"> Dundas St. Bridge - Booth and Logan Ave. Mar 29, 2024 	<ul style="list-style-type: none"> Complaints received about vibrations during overnight work. Action: The Contractor reviewed multiple noise and vibration monitors in the area and confirmed that while vibrations would have been feelable, there were no exceedances or warnings. Work activities taking place when the complaints were documented were excavation and lagging work, no drilling was taking place. Metrolinx followed up with the residents the same day.
7	<p>Pothole</p> <ul style="list-style-type: none"> Dundas St. E. Apr 1 	<ul style="list-style-type: none"> Complaint from resident about pothole on Dundas St. E. under the bridge. Action: The Contractor has filled in all potholes on Dundas St. E. under the bridge.
8	<p>Noise</p> <ul style="list-style-type: none"> McGee St Apr 6, 2024 	<ul style="list-style-type: none"> Complaint received about loud overnight construction noise. Action: The Contractor reviewed the noise monitoring data and confirmed noise exceedances were captured from a hydro-vac truck that was performing urgent work to address a safety risk at the Queen bridge. Work needed to continue to protect the rail corridor. The contractor confirmed the hydro-vac would not be used again throughout the weekend. Metrolinx communicated this to the resident and provided in-house mitigations the next day.

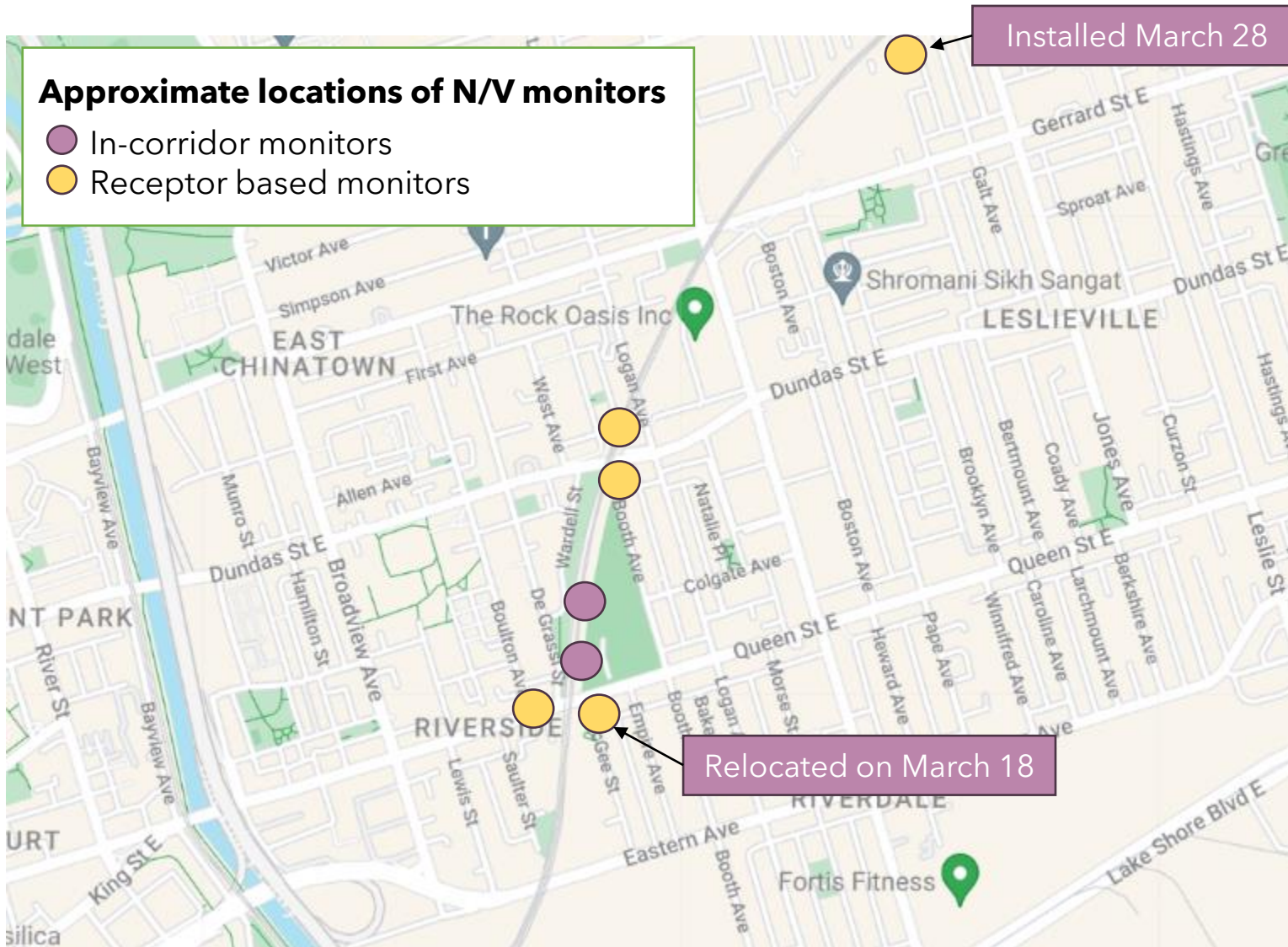
Complaints and Issues Tracker

#	Complaint / Issue	Resolution
9	Noise <ul style="list-style-type: none"> Queen St E- beside Queen St E bridge Apr 9, 2024 	<ul style="list-style-type: none"> Complaint received about construction crew being loud outside the resident's home. Action: Crews needed at that location to ensure safety. Contractor reminded workers to be mindful and respectful of neighbours.
10	Vibration <ul style="list-style-type: none"> Dundas St. Bridge - Booth Ave Apr 10, 2024 	<ul style="list-style-type: none"> Complaint received about vibrations during work Action: The Contractor reviewed multiple noise and vibration monitors in the area and confirmed that while vibrations would have been feelable, there were no exceedances or warnings. Work activities taking place when complaint documented were drilling for the tiebacks and excavating in the rail corridor. . Metrolinx communicated this to the resident the same day the complaint was received.
11	Noise <ul style="list-style-type: none"> Queen St E- beside Queen St E bridge Apr 11, 2024 	<ul style="list-style-type: none"> Complaint received about noise from construction Action: The Contractor confirmed that there were no exceedances at the receptor-based noise monitor. The Contractor advised the noise was likely due to the abutment demolition at the Queen bridge and mitigation measures (noise barriers) were in place. Metrolinx communicated this to the resident the same day the complaint was received.
12	Noise <ul style="list-style-type: none"> Booth Ave- near the Dundas St E bridge. Apr 12, 2024 	<ul style="list-style-type: none"> Complaint received about loud noise coming from truck parked on Paisley Ave. Action: The Contractor investigated and confirmed there was a hydro-vac on Paisley Ave. removing water from the site. The contractor advised the site team that these operations need to be done from the rail corridor in future. The contractor confirmed no noise exceedances were recorded. Action and follow up with the resident was completed the same day the complaint was received.
13	Access <ul style="list-style-type: none"> Queen/De Grassi Apr 12, 2024 	<ul style="list-style-type: none"> Complaint received from business about construction pylons taking up parking spots when no work was taking place. Action: The Contractor removed the pylons.
14	Traffic <ul style="list-style-type: none"> Booth Ave Apr 14, 2024 	<ul style="list-style-type: none"> Complaint received about construction machines using Booth Ave. Action: The Contractor spoke to the site team and reiterated they are not to drive machinery on Booth Ave.
15	Noise <ul style="list-style-type: none"> Queen St E- around the Queen St E bridge Apr 15, 2024 	<ul style="list-style-type: none"> Complaint received about loud construction noise. Action: The Contractor confirmed that there were no exceedances at the receptor-based noise monitor. Work activities taking place when complaint documented was the abutment demolition at the Queen bridge. . Metrolinx communicated this to the resident the same day the complaint was received.

Noise and Vibration Update

March 2024

Noise and Vibration Monitoring Update - March 2024



- There are two noise and vibration monitoring instruments located within the rail corridor, and five monitors located at adjacent residential receptors
- Exceedances were recorded at the receptor-based monitor near the Dundas St. E. and Logan Ave. bridges on March 23, and on March 25 at the monitor near Queen St. E. bridge
- No noise or vibration complaints were received at the same time as the exceedances in March
- Noise limits are measured at the property boundary
- In-corridor monitors are used to detect the highest construction related noise sources - based on this data Metrolinx deploys mitigation measures where practical

• The summary above provides information on noise levels measured over 15-minute intervals (15-minute average).

Registered Exceedances at Noise Receptor Locations: March 2024

Date/Time of Exceedances	Detail	Location	Source	Corrective action
March 23 - Early morning and daytime	Noise	Near Logan Ave. and Dundas St. E. bridges	<ul style="list-style-type: none"> • Caisson drilling 	<ul style="list-style-type: none"> • Contractor to schedule activity after 9 a.m. on weekends where possible
March 25 - Nighttime	Noise	Near the Queen St. E. bridge	<ul style="list-style-type: none"> • Caused by compressor used for lagging operations 	<ul style="list-style-type: none"> • Contractor adjusted placement of noise barriers and equipment • No further exceedances observed

- The above table provides information on noise levels measured over 15-minute intervals (15-minute average).
- Exceedances unrelated to Lakeshore East Joint Corridor construction are not reflected in this table.

Registered Exceedances at In-Corridor Noise Receptor Locations: March 2024

Date/Time of Exceedances	Detail	Location	Source	Corrective action
March 4 - Daytime	Vibration	Within construction site near Queen St. E. bridge	<ul style="list-style-type: none"> Truck loader 	<ul style="list-style-type: none"> Contractor reviewed exceedance and confirmed the exceedance was caused by the truck loader operating near the monitoring system After review, it was determined that no further action was required
March 6 - Daytime	Vibration	Within construction site near Queen St. E. bridge.	<ul style="list-style-type: none"> Truck caught in mud while leaving the corridor 	<ul style="list-style-type: none"> Contractor reviewed exceedances and confirmed the exceedances were caused by the truck operating adjacent to the monitoring system After review, it was determined that no further action was required
March 10 - Daytime and nighttime	Noise	Within construction site near Queen St. E. bridge	<ul style="list-style-type: none"> Excavation and lagging work 	<ul style="list-style-type: none"> Contractor reviewed and adjusted noise barriers and location of equipment
March 11 - Daytime and nighttime	Noise and vibration	Within construction site near Queen St. E. bridge	<ul style="list-style-type: none"> Excavation and lagging work 	<ul style="list-style-type: none"> Vibration exceedance attributed to equipment operating adjacent to the sensor; after review it was determined that no further action was required
March 12 - Nighttime	Noise	Within construction site near Queen St. E. bridge	<ul style="list-style-type: none"> Excavation and lagging work 	<ul style="list-style-type: none"> Contractor reviewed and adjusted noise barriers and location of equipment
March 13 - Nighttime	Noise	Within construction site near Queen St. E. bridge	<ul style="list-style-type: none"> Excavation and lagging work 	<ul style="list-style-type: none"> Contractor reviewed and adjusted noise barriers and location of equipment

- The above table provides information on noise levels measured over 15-minute intervals (15-minute average).
- Exceedances unrelated to Lakeshore East Joint Corridor construction are not reflected in this table.

Registered Exceedances at In-Corridor Noise Receptor Locations: March 2024

Date/Time of Exceedances	Detail	Location	Source	Corrective action
March 15 - Daytime	Vibration	Within construction site near Queen St. E. bridge	<ul style="list-style-type: none"> Dozer and excavator/ excavation and hauling 	<ul style="list-style-type: none"> Vibration exceedance attributed to equipment operating adjacent to the sensor; after review it was determined that no further action was required
March 16 - Daytime	Noise	Within construction site near Queen. St. E. bridge	<ul style="list-style-type: none"> Truck idling at access road 	<ul style="list-style-type: none"> Reduce truck idling at construction access points
March 17 - Daytime and overnight	Noise and vibration	Within construction site near Queen St. E. bridge.	<ul style="list-style-type: none"> Noise: Excavation and lagging Vibration: Truck movement 	<ul style="list-style-type: none"> Contractor reviewed and adjusted noise barriers and location of equipment Vibration exceedance attributed to equipment operating adjacent to the sensor; after review it was determined that no further action was required
March 18 - Nighttime	Noise	Within construction site near Queen St. E. bridge	<ul style="list-style-type: none"> Excavation and lagging work 	<ul style="list-style-type: none"> Contractor reviewed noise data from receptor-based monitors at Queen bridge and confirmed no exceedances were detected; no further action required
March 19 - Nighttime	Noise	Within construction site near Queen St. E. bridge	<ul style="list-style-type: none"> Tonal backup alarm, air release from compressor, and chainsaw 	<ul style="list-style-type: none"> Contractor adjusted tonal back-up beeper to broadband Contractor reviewed noise data from receptor-based monitors at Queen bridge and confirmed no exceedances were detected; no further action required

- The above table provides information on noise levels measured over 15-minute intervals (15-minute average).
- Exceedances unrelated to Lakeshore East Joint Corridor construction are not reflected in this table.

Registered Exceedances at In-Corridor Noise Receptor Locations: March 2024

Date/Time of Exceedances	Detail	Location	Source	Corrective action
March 21 - Nighttime	Noise	Within construction site near Queen St. E. bridge	<ul style="list-style-type: none"> Chainsaw, track loader, excavator Compressor 	<ul style="list-style-type: none"> Contractor reviewed noise data from receptor-based monitors at Queen bridge and confirmed no exceedances were detected; no further action required
March 22 - Nighttime	Noise	Within construction site near Queen St. E. bridge	<ul style="list-style-type: none"> Machine idling next to sensor Compressor 	<ul style="list-style-type: none"> Contractor reviewed noise data from receptor-based monitors at Queen bridge and confirmed no exceedances were detected; no further action required
March 24 Day and night	Noise	Within construction site near Queen St. E. bridge	Lagging installation, compressor and chainsaw	<ul style="list-style-type: none"> Contractor reviewed noise data from receptor-based monitors at Queen bridge and confirmed no exceedances were detected; no further action required
March 25 - Nighttime	Noise	Within construction site near Queen St. E. bridge	Lagging installation, compressor	<ul style="list-style-type: none"> Relocate cutting activities away from sensitive receptors
March 26 - Nighttime	Noise	Within construction site near Queen St. E. bridge	Lagging installation, chainsaw	<ul style="list-style-type: none"> Contractor reviewed noise data from receptor-based monitors at Queen bridge and confirmed no exceedances were detected; no further action required
March 27 - Nighttime	Noise	Within construction site near Queen St. E. bridge	Lagging installation, chainsaw and hammer	<ul style="list-style-type: none"> Contractor reviewed noise data from receptor-based monitors at Queen bridge and confirmed no exceedances were detected; no further action required

- The above table provides information on noise levels measured over 15-minute intervals (15-minute average).
- Exceedances unrelated to Lakeshore East Joint Corridor construction are not reflected in this table.

Ontario Line Construction Update Lakeshore East Joint Corridor Early Works Construction



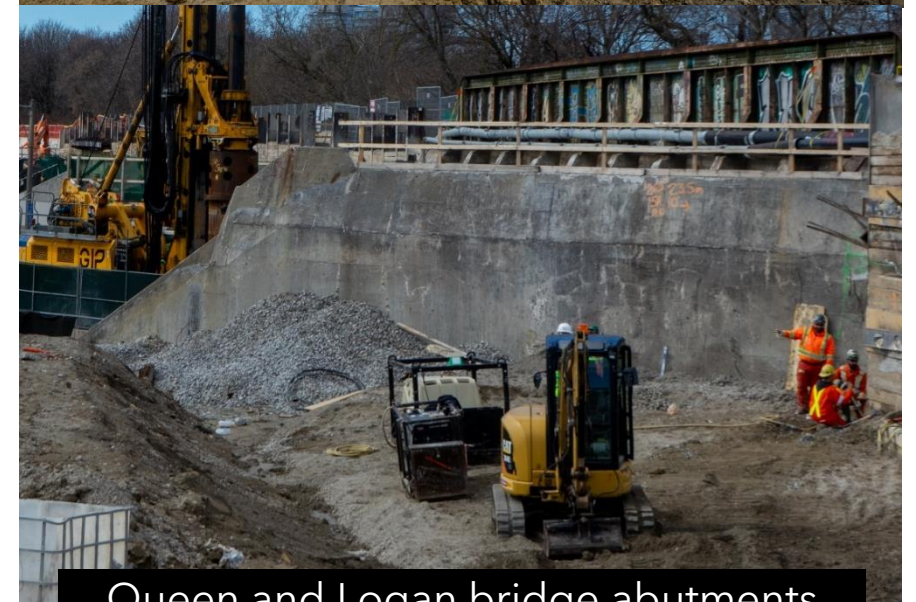
**Bridge Reconstruction:
Queen St. E., Dundas St. E.,
and Logan Ave.**

Bridge Abutment Demolition

- Bridge abutments (the sides of the bridges) will be demolished and removed.
- Broken concrete will be loaded into dump trucks and hauled off site for disposal.
- Once the demolition work is completed, the new abutments and piers will be built.
- The Queen Street East, Dundas Street East, and Logan Avenue bridges will all have their abutments demolished.

Hours of work:

- **Queen bridge:** Ongoing Monday – Friday, between 5 a.m. – 7 p.m. (demolition activities will be restricted before 7 a.m.). Periodically on Saturday's from 7 a.m. – 5 p.m.
- **Dundas bridge:** Starting early May 2024 for approximately two weeks
- **Logan bridge:** Starting late May 2024 for approximately two weeks
- Weekend road closures may be required to complete the demolition work at Dundas and Logan; Metrolinx and the Contractor are exploring opportunities to avoid road closures.



Queen and Logan bridge abutments from the inside

Potential Road Closure for Abutment Demolition at Dundas Street East

Dundas St. E. Road Closure (weekend, daytime and overnight)

- A road closure on Dundas St. E. may be required to demolish a section of the bridge abutment

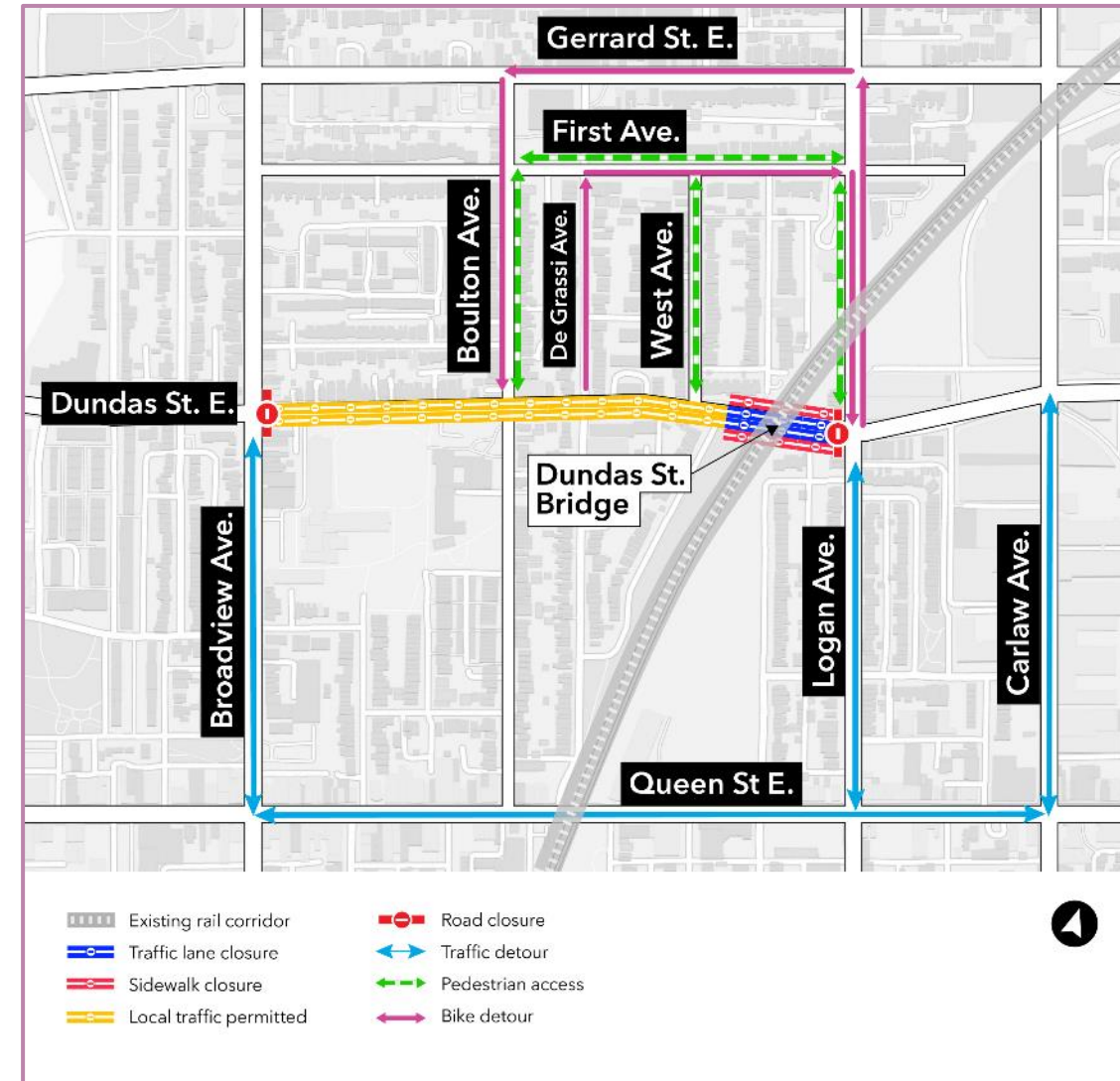
Hours of work:

- Starting on Friday, May 10 at 9 p.m. until Monday, May 13, 2024, at 5 a.m.
- **No overnight breaking:** Concrete breaking will be restricted during the overnight period (11 p.m. - 7 a.m.)

What to expect:

- **Road closures:** Full closure of Dundas St E between Broadview and Logan Aves. No traffic or pedestrian access will be permitted beneath the Dundas St E bridge.
- Construction activities will include concrete breaking, saw cutting, loading and hauling.
- Noise from construction equipment including saws, excavators, jack hammers, loaders, and dump trucks.
- Paid Duty Officers and traffic control personnel will be present to assist vehicles and pedestrians.
- Traffic barrels, fencing, signage and barriers will be in place to delineate the work zones. Advance signage will be in place to direct traffic and pedestrians.

Future road closures on Dundas St. E. may be required in the Spring to demolish the other sections of the bridge abutment. Metrolinx will notify the community once exact dates for the road closures are confirmed.

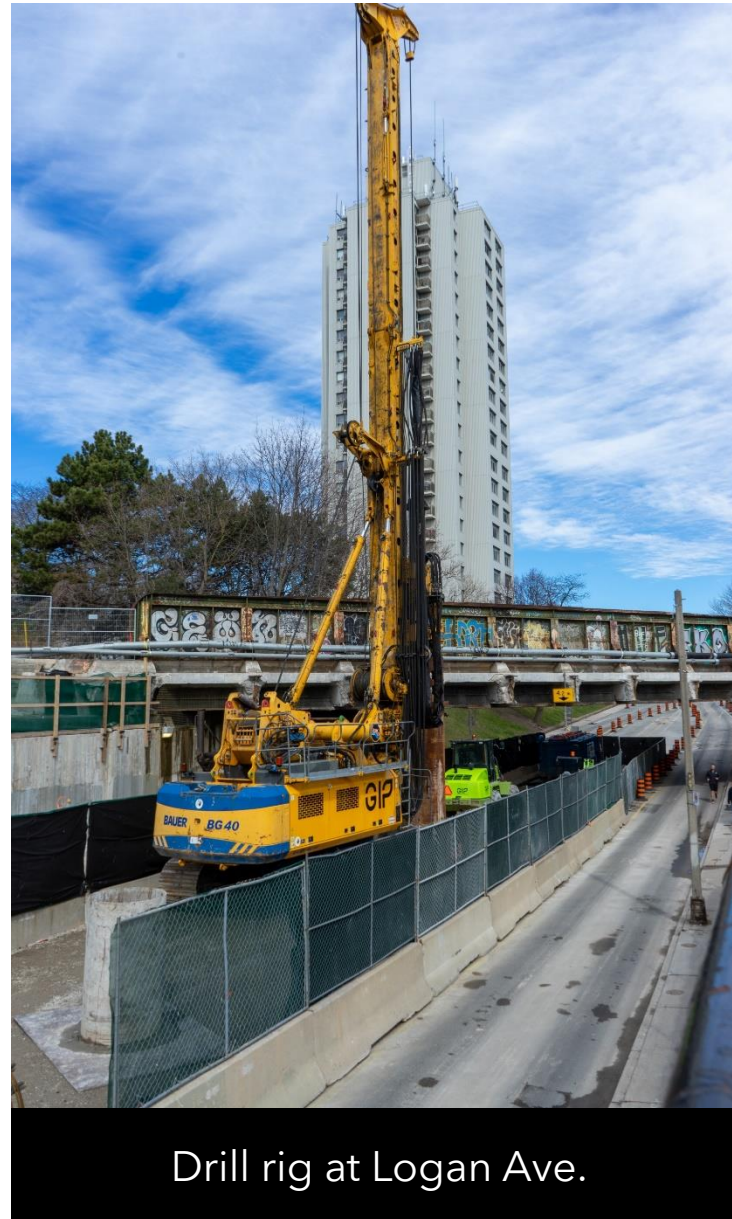


Bridge Pier Construction

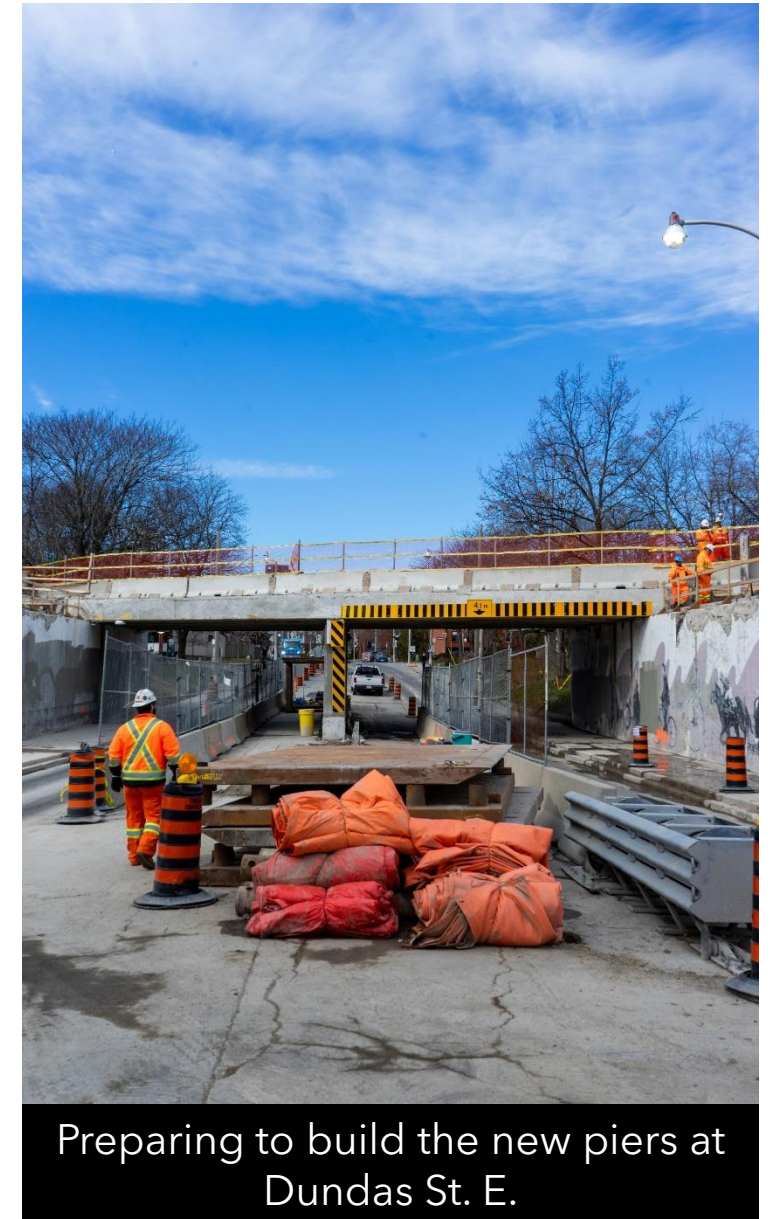
- New bridge piers are currently being constructed at Dundas St. E. and Logan Ave.
- Drill rigs are being used to dig holes into the ground which are then filled with rebar and concrete to support the pier footings.
- New piers will then be built out of steel and concrete.
- Construction activities include excavation, rebar installation, concrete works, and hauling.

Hours of work:

- Monday - Friday between 7 a.m. - 7 p.m. (up until 10 p.m. as required); periodically on Saturdays from 7 a.m. - 5 p.m.
- **Dundas and Logan bridges:** Ongoing until early June 2024



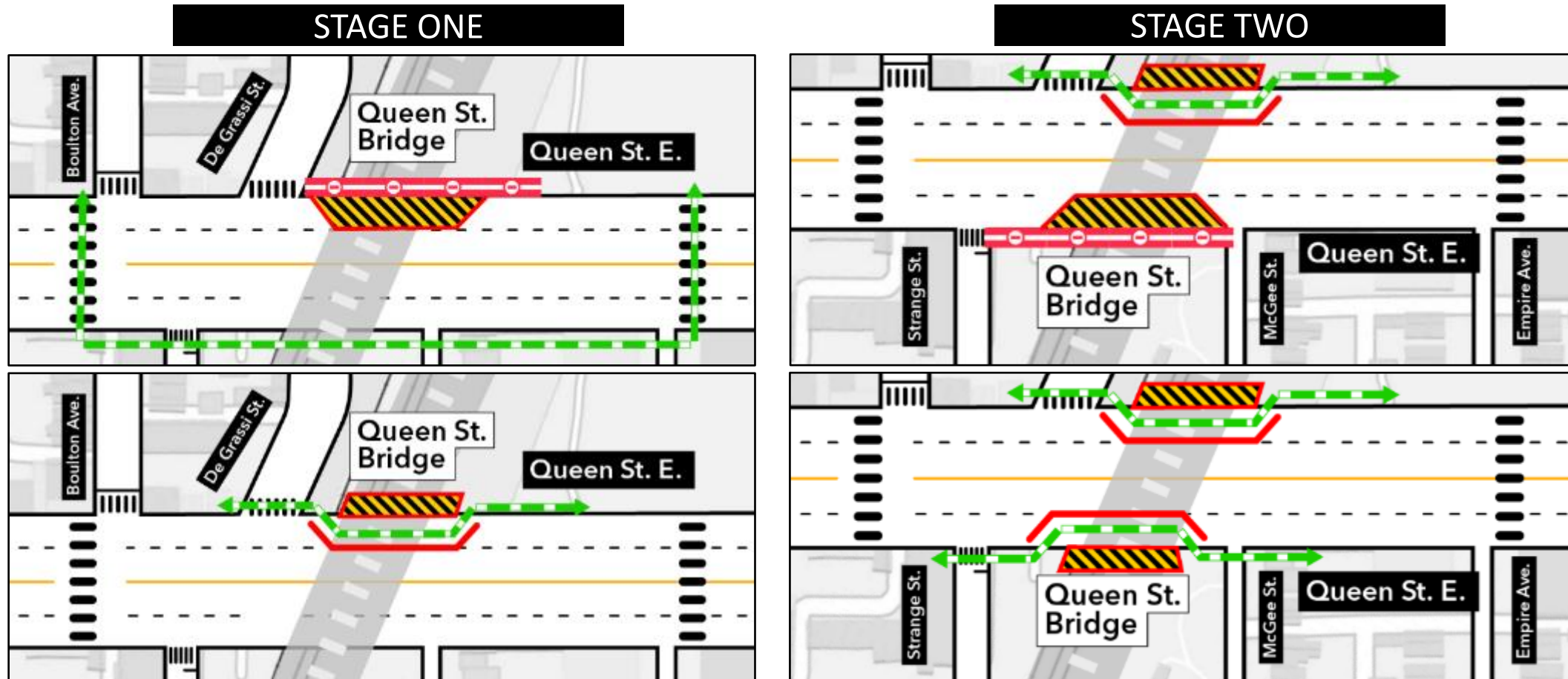
Drill rig at Logan Ave.



Preparing to build the new piers at Dundas St. E.

Current Traffic Configuration: Queen St. E. Bridge

Ongoing for approximately five months

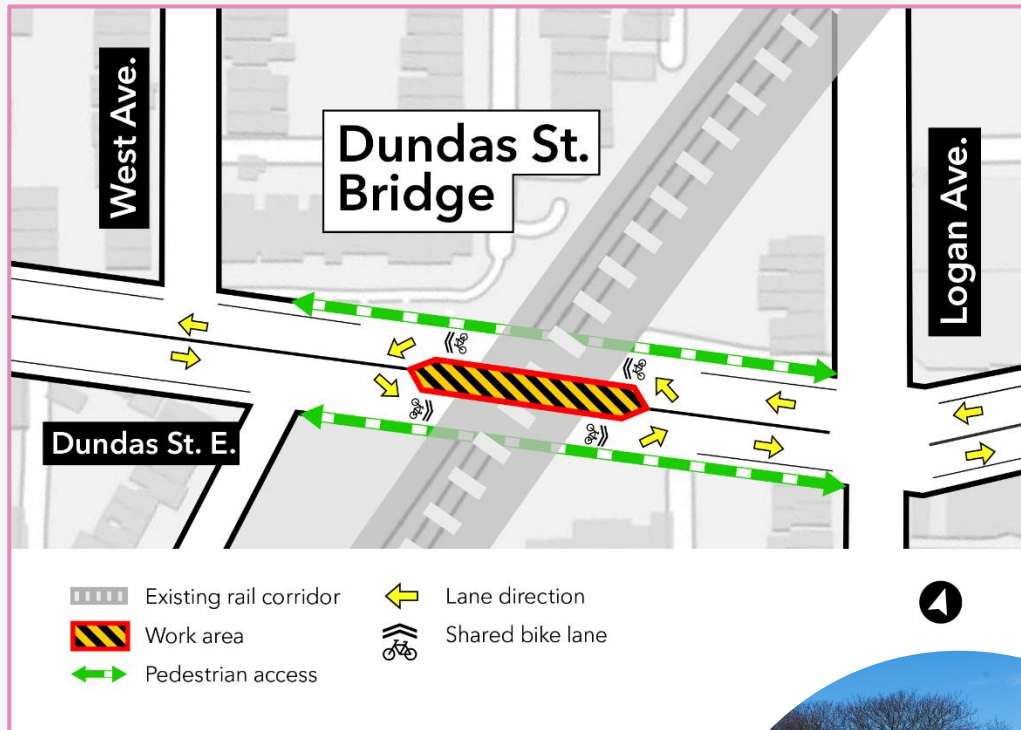


- Existing rail corridor
- Work area
- Sidewalk closure
- Pedestrian access
- Temporary concrete barrier



Current Traffic Configuration: Dundas St. E. and Logan Ave. Bridges

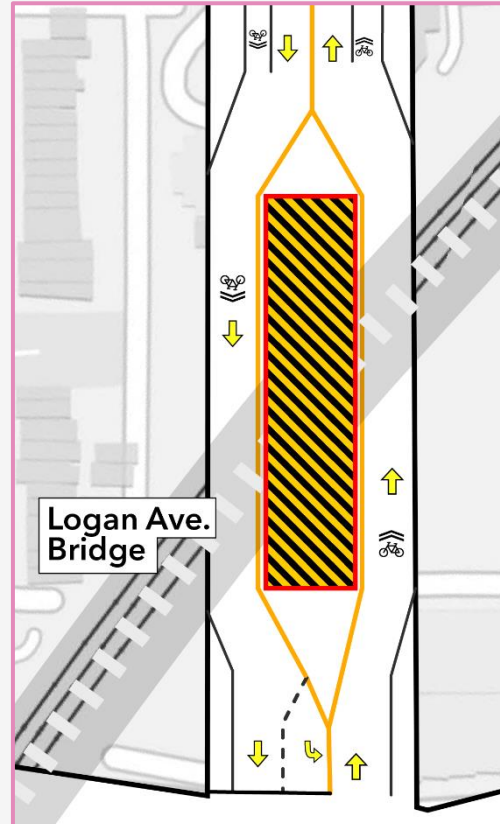
Dundas Street East



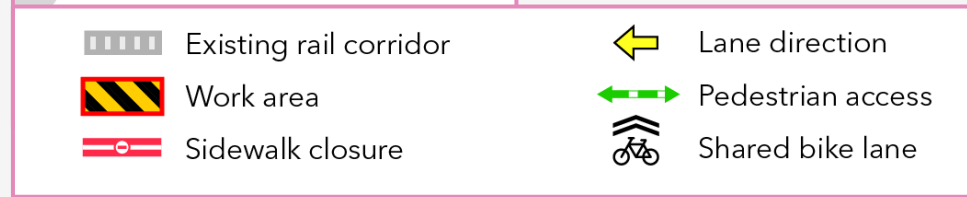
Ongoing until late May 2024



Logan Avenue



Ongoing until late May 2024

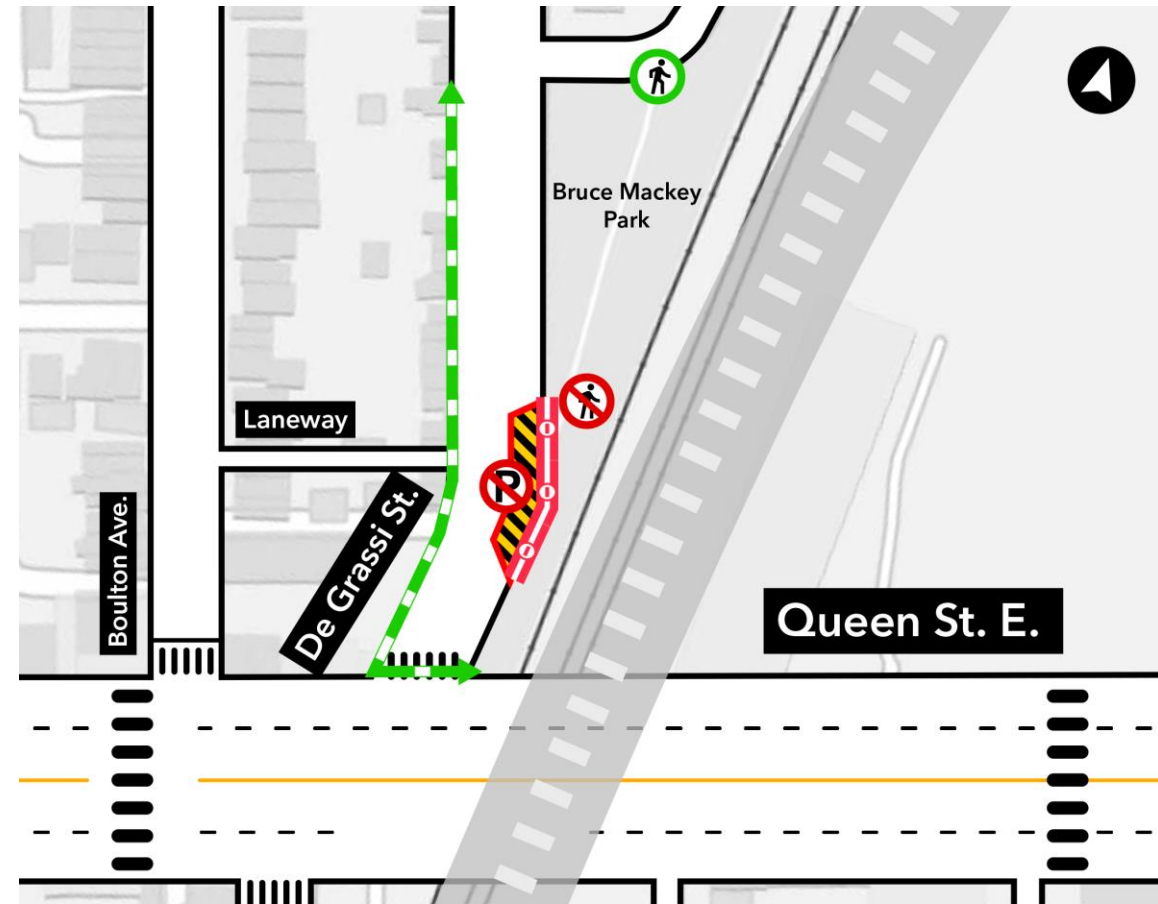








Sewer Installation Work on De Grassi Street

- In late April, a new combined sewer will be installed on De Grassi Street north of Queen Street East.
- This new sewer line is required to make space for the future Riverside-Leslieville subway station.
- Temporary parking and sidewalk closures will be required to safely perform the work.
- Entry into Bruce Mackey Park will be restricted from the south side during certain stages of the work; the north entrance into the park will remain open.

Start dates and hours of work:

- **Investigation work:** Monday, April 22 for approximately two days
- **Sewer installation:** Monday, April 29 for approximately two weeks
- **Hours:** Monday - Friday, between 7 a.m. - 7 p.m.



- | | |
|--|---|
|  Existing rail corridor |  Sidewalk closure |
|  Work area |  Pedestrian access |
|  Restricted parking |  Bruce Mackey Park only accessible via north entrance. |



Construction Update: In-Corridor Work

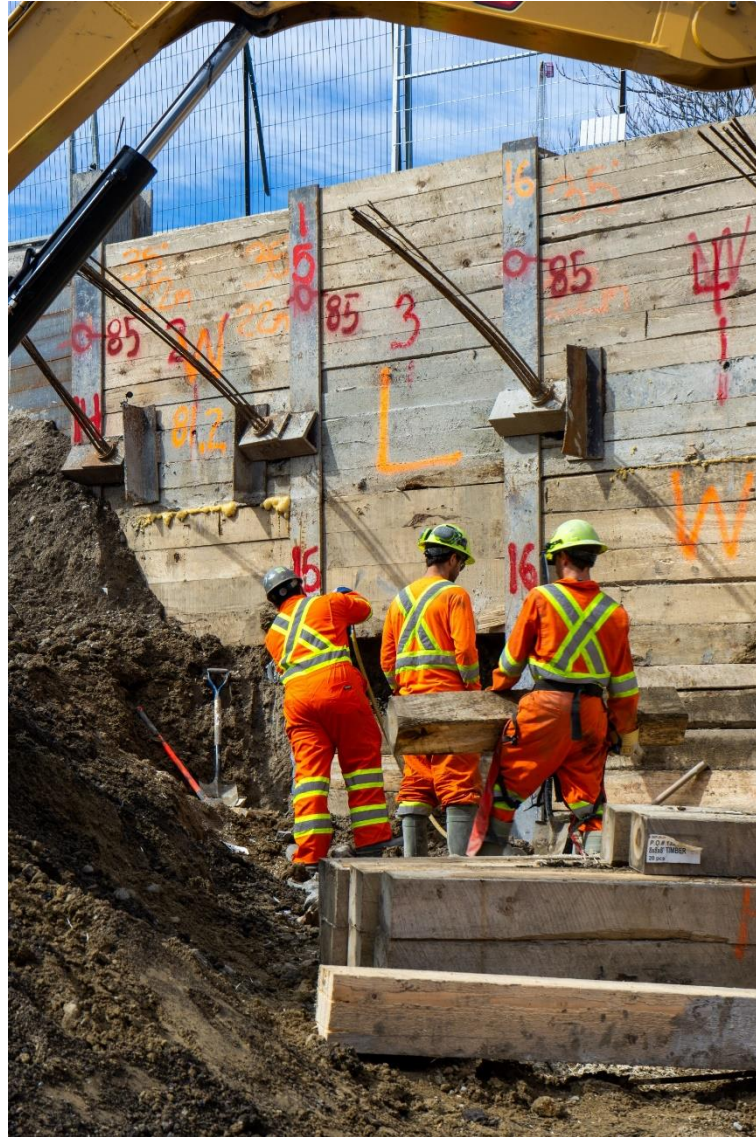
In-Corridor Work Update

#	Activity	Description	Location	Date and times
1	Excavation and Structural Support Work	Support structures (piles and shoring walls) are being installed throughout the corridor to enable bridge reconstruction and retaining wall and noise barrier installations. Construction activities include excavation, drilling and concrete works.	<ul style="list-style-type: none"> Throughout the rail corridor between Eastern Ave. and Carlaw Ave. At Queen St. E., Dundas St. E. and Logan Ave. bridges 	<ul style="list-style-type: none"> Ongoing until June 2024 Daytime: Monday - Friday from 7 a.m. to 7 p.m. Overnight: Sunday - Thursday from 8 p.m. to 5 a.m.
2	Utility Installations	Excavation inside the rail corridor to install an enclosed conduit (raceway) that will protect utilities from external conditions.	Within the rail corridor between Thackeray St. and Jones Ave.	<ul style="list-style-type: none"> Ongoing for approximately five weeks Overnight: Monday - Friday from 8 p.m. to 5 a.m.
3	Fence and Noise Barrier Installation	New fence and noise barriers will be installed. The pathway at Galt Laneway to Gerrard Square will be closed to accommodate this work.	On the east side of the rail corridor from Gerrard St. E. and Jones Ave.	<ul style="list-style-type: none"> Ongoing for approximately six months Daytime: Monday - Friday from 7 a.m. to 7 p.m. Piling for the new noise barrier at Galt Ave. will take place overnight from approx. April 22 - 25
4	Track Maintenance Work	Replacing track ties and regrading the track ballast	Within the rail corridor between Galt Ave. - Pape Ave.	<ul style="list-style-type: none"> Starting as early as Sunday April 21 for approximately three weeks Overnight: Sunday - Thursday from 8 p.m. to 5 a.m.
5	Retaining Wall (T-Wall) Construction	Installation of pre-cast concrete block retaining walls	On the east side of the rail corridor from Eastern Ave. - Thackery St.	<ul style="list-style-type: none"> Starting as early as mid- May for approximately six months. Daytime: Monday - Saturday from 7 a.m. to 7 p.m. Overnight: Sunday - Friday from 8 p.m. to 5 a.m.

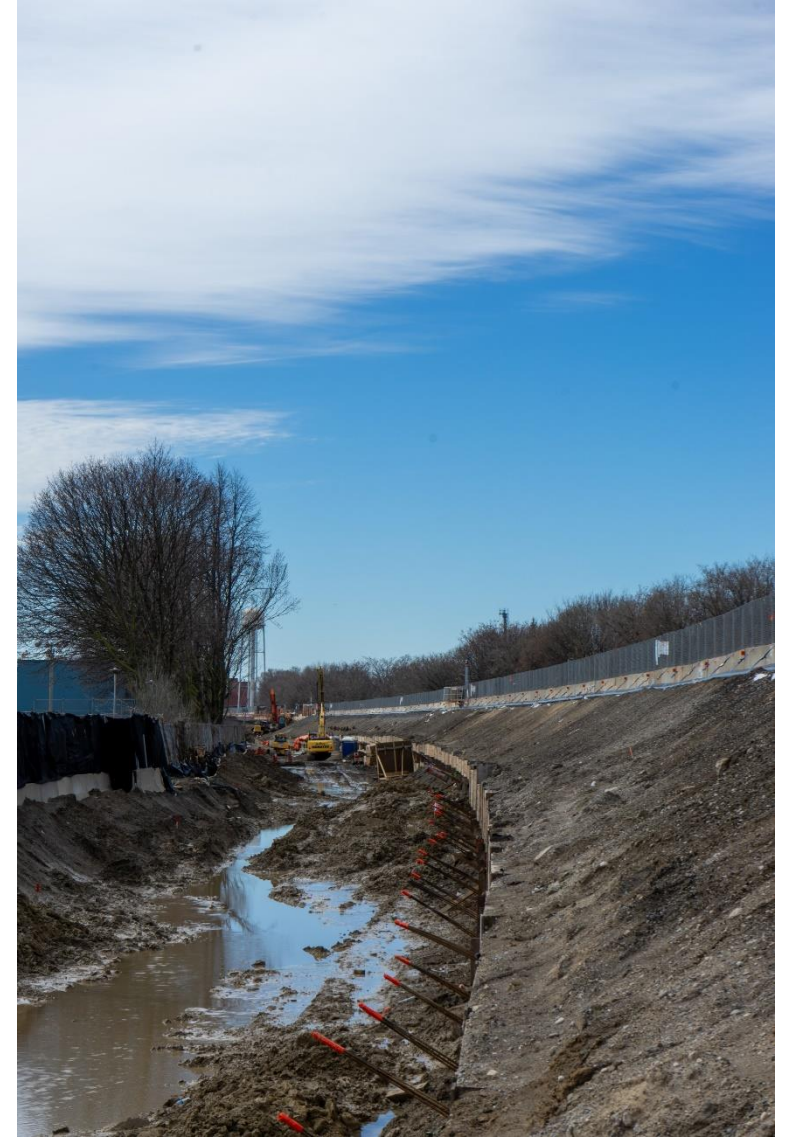
In-Corridor Work Progress - Excavation and Lagging



Excavation at Thackeray St looking towards Logan Ave



Lagging (vertical timber material) being installed at the Queen Bridge



Excavation inside the rail corridor along Jimmie Simpson Park

Retaining Wall Construction Update

- As early as mid-May, retaining wall construction will begin on the east side of the rail corridor between Eastern Ave. - Dundas St. E.
- Construction will take place intermittently in each area over six months; work will not take place in every night in the same location
- Work will be performed during the day and at night to accelerate construction and project completion, and help minimize disruption from future construction and train activity in the corridor

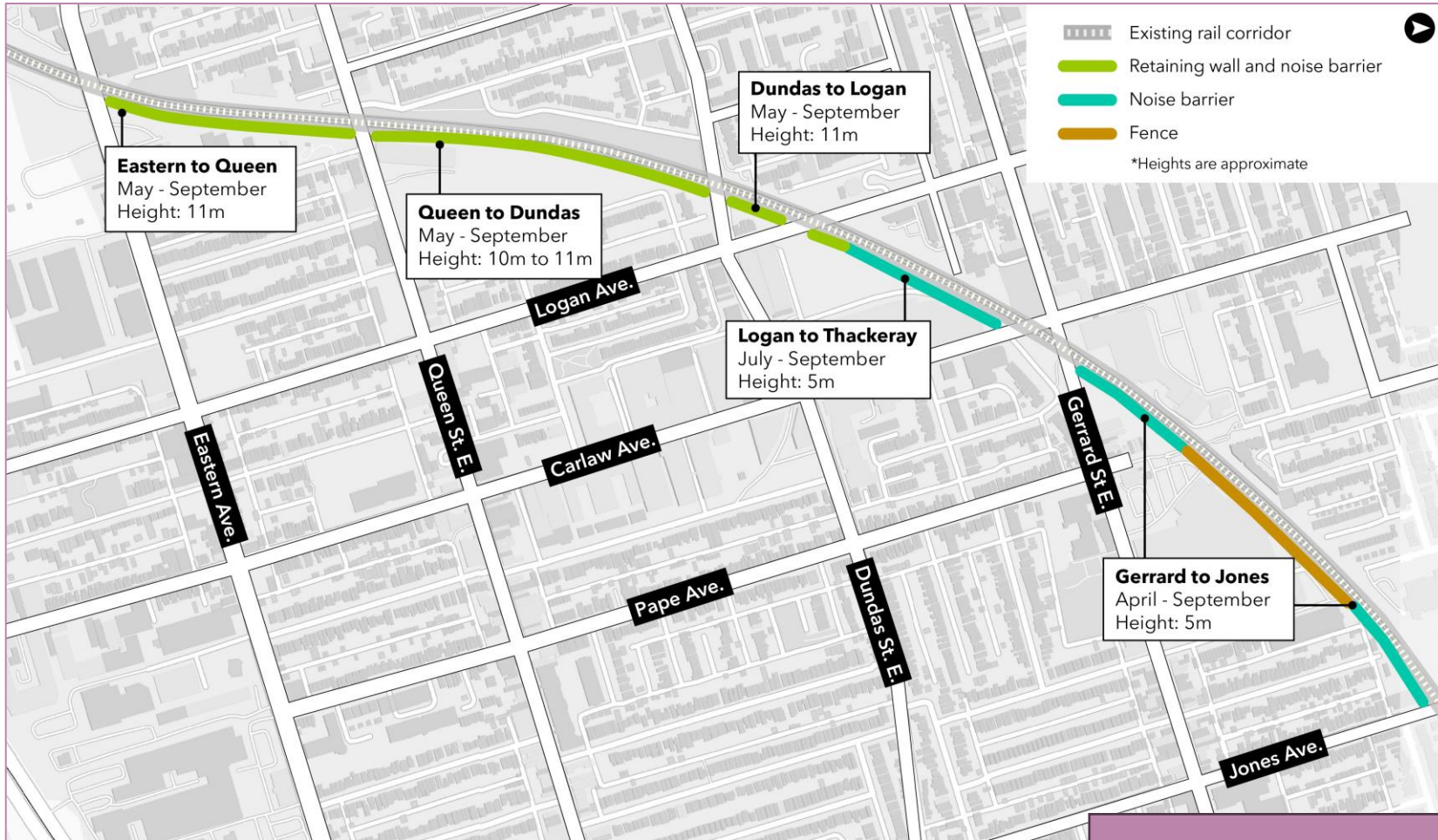
Work will include:

- Building the foundation for the walls by pouring concrete and laying granular material
- Installing pre-cast concrete blocks (T-walls)
- Backfilling and compacting around retaining walls

The following mitigation measures will be implemented throughout the work to reduce noise disruption:

- Scheduling less disruptive work overnight
- Avoiding work on holidays and during community events
- Use of noise barriers and noise reducing equipment (broadband back up alarms)
- Monitoring noise levels and taking action to resolve complaints
- Following good neighbour practices

Retaining Wall Construction Schedule



Existing rail corridor
 Retaining wall and noise barrier
 Noise barrier
 Fence
 *Heights are approximate

Activity	Working Hours
<ul style="list-style-type: none"> Excavating and removing materials from the site Pouring concrete and backfilling soil/granular material around the walls Compacting backfilled materials Removing temporary wood shoring walls 	<p>Daytime: Monday – Saturday from 7 a.m. – 7 p.m.</p>
<ul style="list-style-type: none"> Delivery and placement of pre-cast concrete blocks Site preparation and maintenance work 	<p>Overnight: Sunday – Thursday from 8 p.m. – 5 a.m.</p>

Retaining wall surface treatments will be included as part of this scope.

Retaining Wall Transition at Logan Ave Bridge



Graphic for illustrative purposes only

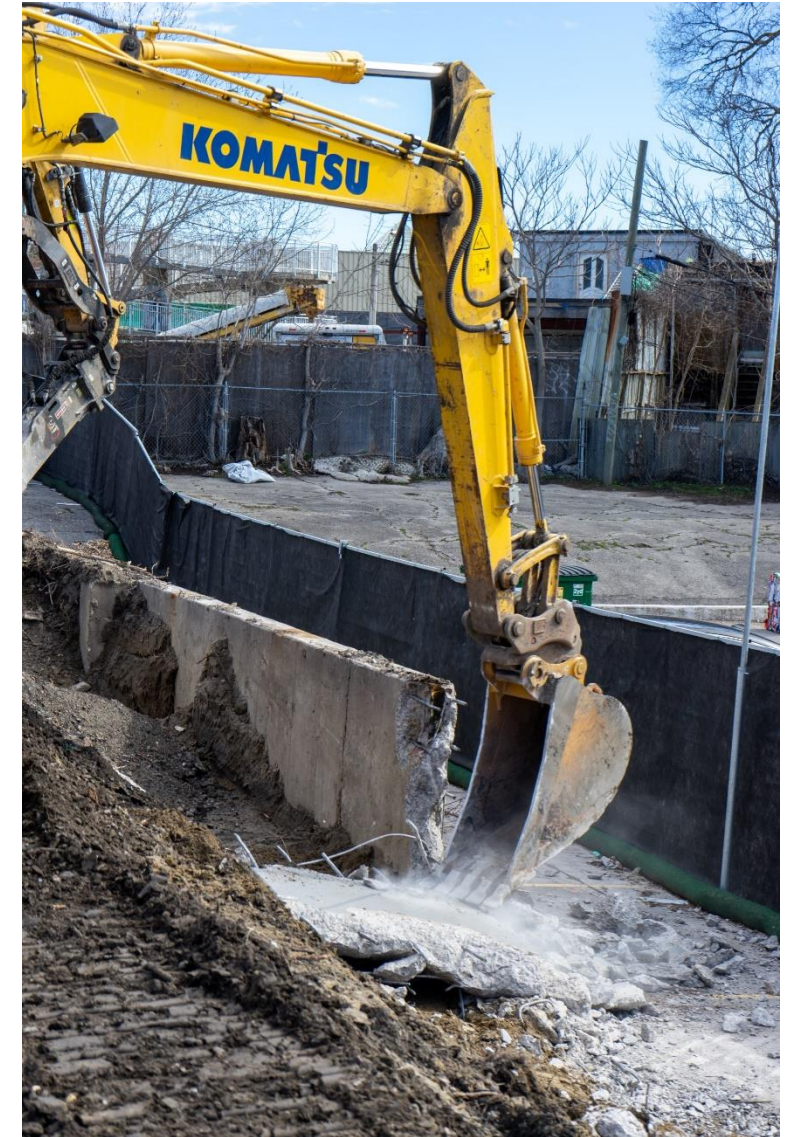
In-Corridor Work Progress - Retaining wall removal and noise barrier installation



Old concrete retaining wall being demolished



Steel piles waiting to be installed into the ground. These will support noise barriers.



Close-up of concrete retaining wall demolition.

Weekend Rail Closure: May 3 - 5, 2024

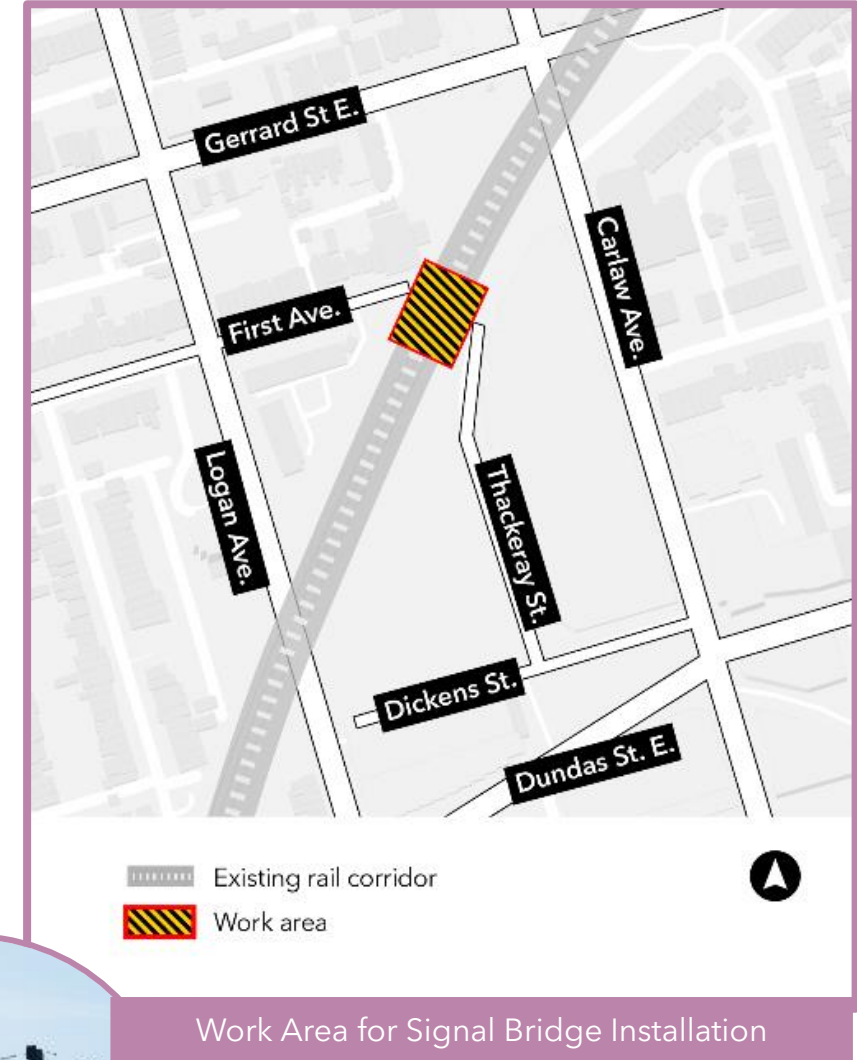
- The following work was completed during the rail closure from April 5 - 8, 2024
 - Installed the north foundation for the new train signal bridge
 - Replaced 144 track ties
 - Installed two casement pipes for future power and comms cables
 - Completed the second level of excavation and shoring at Queen bridge and on the south side of the Dundas bridge
 - Finished drilling 20 piles for the new noise wall at Galt Ave.
- During the rail closure from May 3 - May 5, 2024, crews will work to complete the following activities:
 - Install the footing for the new train signal at First Ave.
 - Lagging, shoring and excavation throughout the rail corridor
 - Utility installations near First Ave. and at Gerrard St. E. bridge

Hours of work:

- The next rail closure will take place from Friday, May 3 to Monday, May 5, 2024
- Work will begin Fridays at 7 p.m. and continue until Mondays 5 a.m.

What to expect:

- GO train service on the Lakeshore East line will be affected - visit the [GO website](#) for specific details.
- Noise from construction equipment including drill rigs, excavators, loaders, saws, hydro-vac trucks, dump trucks, concrete trucks, and hand tools can be expected.
- Overnight work will be required to ensure all necessary activities are completed during the rail closures.
- Construction mitigation measures will be implemented as required to minimize disruption.



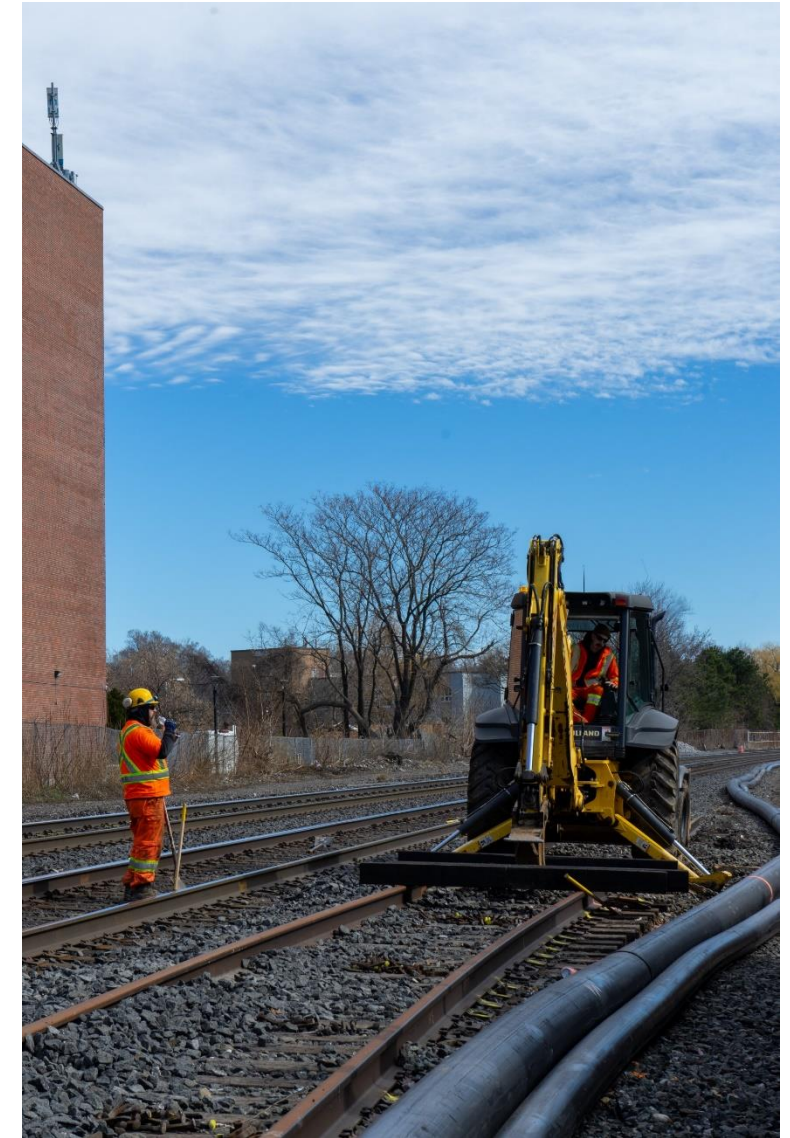
In-Corridor Work Progress - Signal bridge and rail works



Foundation of new signal bridge being prepared



Steel rebar structure that will serve as foundation when filled with concrete



Rail tie replacement during rail closure

Future Track Alignment- South of Gerrard Bridge

Future GO Train Tracks



Future Ontario Line Tracks

2024 Lookahead

Q2 2024 (April- June)	Q3 2024 (July - September)	Q4 2024 (October- December)
<p>Activity: Excavation and support works in the rail corridor and at the Queen St. E., Logan Ave., and Dundas St. E. bridges</p> <p>Hours:</p> <ul style="list-style-type: none"> • Daytime: Monday - Friday from 7 a.m. to 7 p.m. • Overnight: Sunday - Thursday from 8 p.m. to 5 a.m. 	<p>Activity: Start construction of new bridge abutments and decks at Queen St. E., Logan Ave., and Dundas St. E.</p> <p>Hours: Exact days and work hours to be determined</p>	<p>Activity: Rail closures for installation and commissioning of new tracks</p> <p>Hours:</p> <ul style="list-style-type: none"> • Two weekends between October and November 2024 (exact dates to be determined); 24-hour work
<p>Activity: Utility installations between Gerrard St. E. and Jones Ave.</p> <p>Hours:</p> <ul style="list-style-type: none"> • Overnight: Monday - Friday from 8 p.m. to 5 a.m. 	<p>Activity: Continue installation of retaining walls and noise barriers from Eastern Ave. - Jones Ave</p> <ul style="list-style-type: none"> • Daytime: Monday - Saturday from 7 a.m. to 7 p.m. • Overnight: Sunday - Thursday from 8 p.m. to 5 a.m. 	<p>Activity: Continue construction of the new bridges on the east side of the rail corridor</p> <p>Hours: Exact days and work hours to be determined</p>
<p>Activity: Bridge abutment demolition and pier construction at the Queen St. E., Logan Ave., and Dundas St. E. bridges</p> <p>Hours:</p> <ul style="list-style-type: none"> • Daytime: Monday - Friday from 7 a.m. to 7 p.m. and periodically Saturday's from 7 a.m. - 5p.m. • Periodically crews may be required to work until 10 p.m. on weekdays • Overnight: Weekend road closures may be required for abutment demolitions 	<p>Activity: Start preparation work (tree and fence removals) for construction on the west side of the corridor</p> <p>Hours: Daytime (exact days and work hours to be determined)</p>	<p>Activity: Continue preparation work (access roads) for construction on the west side of the corridor</p> <p>Hours: Daytime (exact days and work hours to be determined)</p>
<p>Activity: Installation of retaining walls and noise barriers from Eastern Ave. - Jones Ave.</p> <p>Hours:</p> <ul style="list-style-type: none"> • Daytime: Monday - Saturday from 7 a.m. to 7 p.m. • Overnight: Sunday - Thursday from 8 p.m. to 5 a.m. 		<p>Activity: Logan Ave. watermain relocation</p> <p>Hours: Exact days and work hours to be determined</p>
<p>Activity: Rail corridor closure to continue working on the installation of a new train signal bridge inside the rail corridor east of First Ave.</p> <p>Hours:</p> <ul style="list-style-type: none"> • May 3-5, 2024 • 24-hour work 		
<p>Activity: Sewer restoration work at Degrassi St. E. and Saulter St.</p> <p>Hours:</p> <ul style="list-style-type: none"> • Daytime: Monday- Friday from 7 a.m.- 7p.m. 		

• Work activities and hours listed are tentative and subject to change



**Eastern Avenue Bridge
East Harbour Transit Hub**

EAST HARBOUR TRANSIT HUB

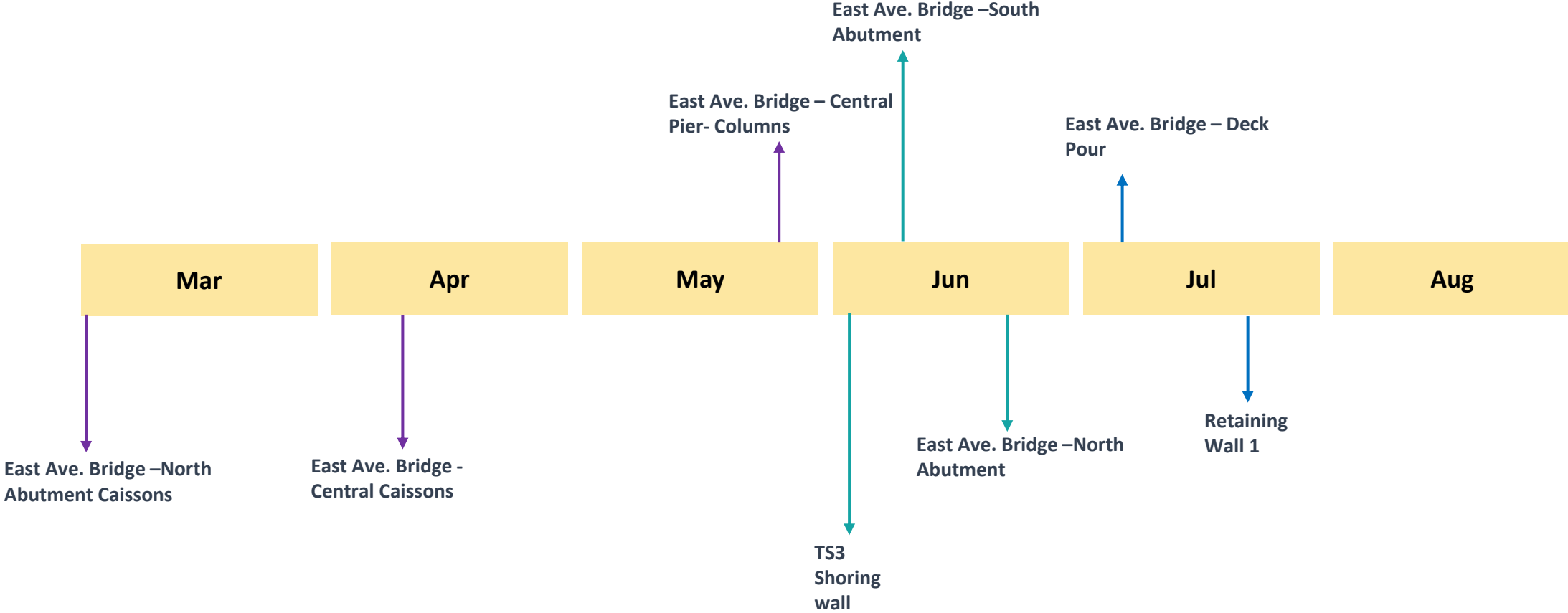
EARLY WORKS AND EASTERN AVENUE BRIDGE WORK

- Advanced preparations continue in anticipation of the start of construction in mid-2024*.
- Early Works may include such things as: establishing the work zone, moving equipment, supplies, and other resources, geo-technical investigations, utility daylighting, and track work.
- Early works are an important component of any construction project. These activities set the groundwork for major construction and reduce the risk of delays to the project.
- With the ongoing demolition and reconstruction of the Eastern Avenue Bridge, a series of lane closures on Eastern Avenue, will be in effect starting mid-October 2023 until October 2026*, to create a safe working zone for the crews and vehicle traffic.

•Dates are subject to change

EAST HARBOUR TRANSIT HUB

UPCOMING CONSTRUCTION ACTIVITIES



Note: Dates are subject to change

Transit Oriented Community (TOC)

The Transit-Oriented Communities Program

The Transit-Oriented Communities Program will build vibrant, mixed-use communities that will bring more housing (including affordable housing options), jobs, retail, community amenities and entertainment at or within a short distance of transit stations.

The Transit-Oriented Communities Program will:

- **Increase transit ridership** and reduce traffic congestion.
- **Increase housing supply** (including affordable housing).
- **Stimulate the economy** through major projects and create jobs.
- **Bring retail and community amenities** (for example, community centres) within a short distance of public transit stations.
- **Offset the cost of station construction** which would save taxpayers' money.



TOC TIMELINE

GERRARD-CARLAW NORTH

- Development Concept Submitted to City of Toronto: October 14, 2022
- Community Engagement ([Open House 1](#)): November 29, 2022
- Community Engagement ([Open House 2](#)): March 30, 2023

For more information: <https://engageio.ca/en/gerrard-carlaw-north>

GERRARD-CARLAW SOUTH

- Development Concept Submitted to City of Toronto: October 19, 2023
- Community Engagement ([Open House 1](#)): February 13, 2024
- Community Engagement – Open House 2: Fall 2024

For more information: <https://engageio.ca/en/GerrardCarlawSouth>

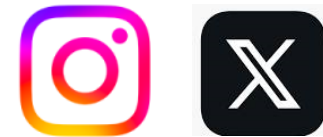
EASTERN

- Development Concept Submitted to City of Toronto: October 19, 2023
- Community Engagement ([Open House 1](#)): February 15, 2024
- Community Engagement – Open House 2: Fall 2024

For more information: <https://engageio.ca/en/EasternAvenue>

For more information on TOC program, visit: EngageIO.ca

For inquiries, email us at EngageIO@infrastructureontario.ca



@InfraOntario

What's Next and Wrap Up

Community Engagement

Metrolinx along with construction and project representatives are here for the community throughout the project. Upcoming community engagement activities include:

- Police Day At Jimmie Simpson Park- May 11
- Riverside Eats & Beats Streetfest- June 8
- Sounds of Leslieville & Riverside- July 5-8

Next CLC: May 16 from 6-7:30 p.m.

Follow us on social media:

X / Facebook / Instagram @ OntarioLine



Ontario Line Design Competition July 2022, Jimmie Simpson Park

Contact Us

Metrolinx will keep the community, residents and businesses informed by providing project updates, seeking input and feedback, and addressing questions and concerns effectively and quickly.

Stay connected:

Ontario Line e-newsletter @ [Metrolinx.com/OntarioLine](https://www.metrolinx.com/OntarioLine)

Questions or comments:

OntarioLine@metrolinx.com

24/7 call # 416-202-5100

Follow us on social media:

Twitter / Facebook / Instagram @ OntarioLine



Ontario Line Community Office 770 Queen Street East

Questions and Answers



Appendix

CLC Code of Conduct



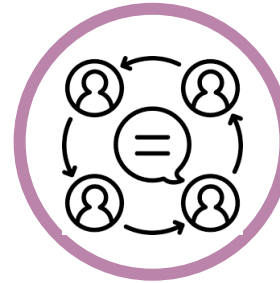
Participate fully, openly, and transparently in discussions, while also creating an environment where all members are encouraged to contribute and share their views.



Participate in a respectful manner towards other CLC members by using appropriate language.



Keep requested agenda and discussion items within the **mandate and scope** of the **Construction Liaison Committee**.



Represent their community's diverse perspectives and interests.

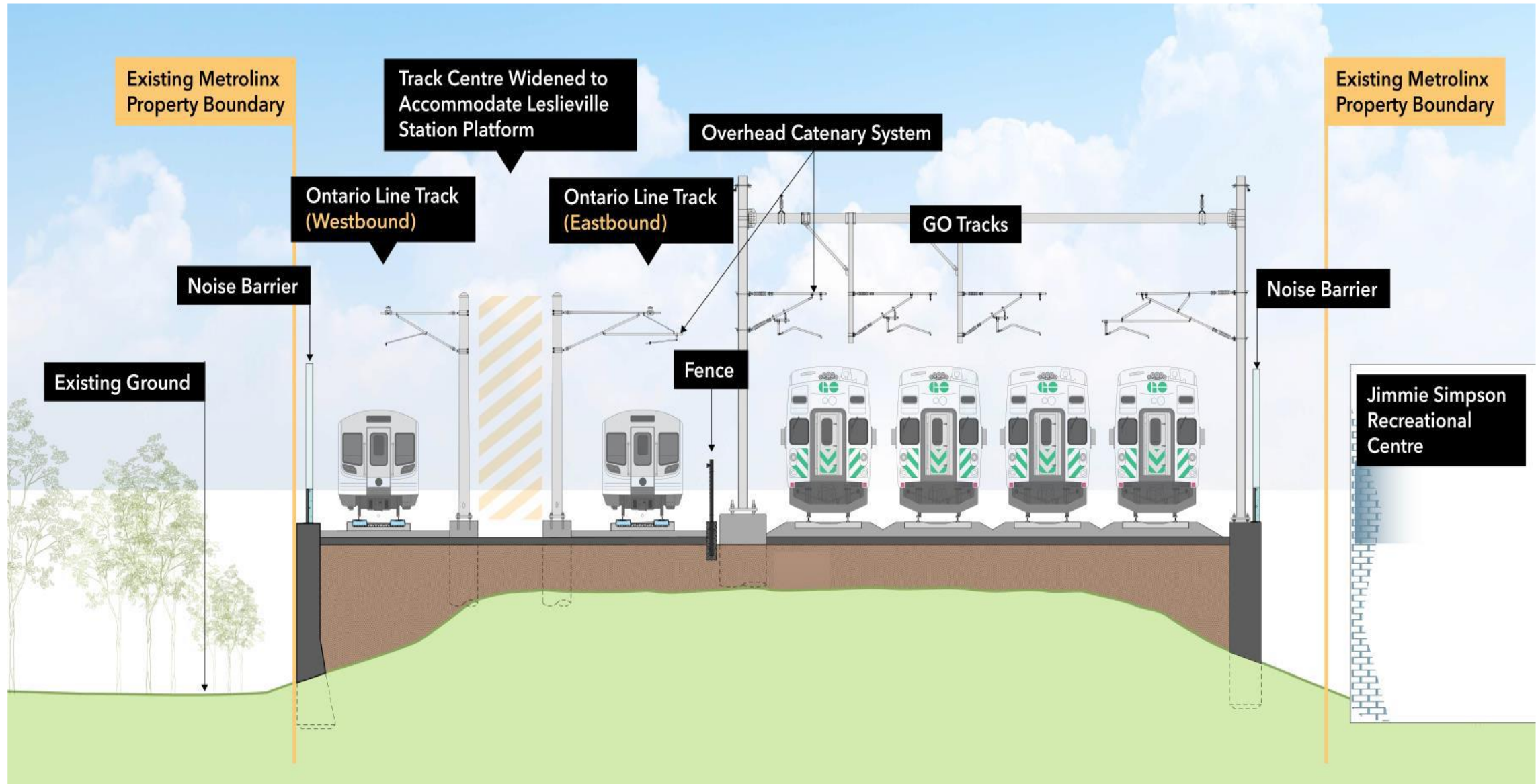


Maintain confidentiality of sensitive issues, when requested by participants.



Commit to equity, diversity and inclusion by supporting the participation of the whole community regardless of race, gender, class, sexuality, age or ability.

Summary of Lakeshore East Joint Corridor Early Works



Construction Liaison Committees (CLC)

Construction Liaison Committees (CLCs) provide open, two-way communication and sharing of information before and during the construction of the Ontario Line project. The CLC will focus on the impacts, issues and areas of concern for resolution related to the Ontario Line construction within the Leslieville/Riverside neighbourhoods. The full Terms of Reference will be shared with the CLC via email.

- The CLC will meet regularly as construction activities get underway
- CLC frequency is flexible, depending on schedules/availability and critical construction work
- Metrolinx will work with stakeholders to develop meeting agendas
- Meetings will last 60-90 minutes, depending on the agenda
- Metrolinx to chair the CLC with support from the project contractor
- Project contractor will participate and lead the construction updates
- Action items/issues/complaints to be logged for resolution

Construction Liaison Committee (CLC)

Community representatives



- Elected officials
- Community groups/residents
- Residents' groups/associations
- Tenant representatives
- BIAs
- Business owners

City of Toronto



Project team members



- Metrolinx—representatives from Subways Sponsors Office, Design Division, Community Engagement, Project Teams and Contractor/Project Co.

Who Does What?



A division of CRH Canada Group Inc.

Responsible for construction delivery, establishing the construction schedule, determining construction plans and the care and control of construction sites.



Contribute subject matter expertise regarding City polices, requirements, permits and procedures.

Ensure key City and community interests are noted and addressed through application design reviews and permits.

Work with partners to minimize negative impacts on residents and the environment.

Monitor construction sites for safety and adherence to City standards and bylaws.



Overarching accountability for entire project, strategy and content approvals, building relationships and understanding needs of the community.

Oversight of construction contractors to ensure compliance with contractual obligations, including work schedules, adherence to acceptable noise levels, traffic management plans and permit conditions.

Construction Liaison Committee Members



Community Members

- Riverside BIA
- Leslieville BIA
- WoodGreen Community Services
- Lakeshore East Community Advisory Committee
 - Shelley Kline
 - Tony Whitaker
- Rosemary Waterston (resident)
- Catherine Riddell (resident)
- Stephen Davies (resident)
- Fontbonne Ministries
- Saulter Street Brewery
- Bonjour Brioche Bakery
- Tabule Restaurant
- Jimmie Simpson Recreation Centre (City of Toronto)

Elected Officials (or designate)

- MP Julie Dabrusin
- MPP Peter Tabuns
- Councillor Paula Fletcher



- Transit Expansion Division
- Parks, Forestry and Recreation
- Transportation Services



- Ontario Line Community Engagement
 - Mark Clancy
 - Katiana Moussa
 - Louis Vattr
- Dufferin Construction
- Project Sponsor
- Capital Projects Group
- Traffic and Transportation
- Other project teams as required

Impact Levels

Major Impact



Includes:

- Major intersection work
- Overnight work
- Transit impacts
- Road closures
- Public parking displacement

Medium Impact



Includes:

- Paving
- Long term traffic lane closures
- Work affecting access to private driveways

Minor Impact



Includes:

- Short-term traffic lane closures
- Temporary pedestrian detours

Summary of Lakeshore East Joint Corridor Early Works



Lakeshore East Joint Corridor Early Works Scope of Work Summary



Future station



Utility relocations along Queen Street, Dundas Street, Logan Avenue and the surrounding side streets.



Upgrade to the rail corridor, including excavation of the existing embankment, installation of new drainage infrastructure, installation of pre-cast concrete retaining walls and backfill of the corridor.



Removal of existing and construction of new GO Bridges at Queen Street East, Dundas Street East and Logan Avenue. Construction of two new Ontario Line bridges at Dundas and Logan.



Realignment of the existing GO tracks, construction of a fourth GO track, and preparation works for eastbound and westbound Ontario Line tracks.



Construction of noise barrier walls to mitigate the impact of the railway on adjacent properties.



Construction of retaining walls for construction of the future Ontario Line stations: Riverdale-Leslieville station and Gerrard station.



Overview | Bridges Redevelopment

