

Moss Park Construction Liaison Committee

April 18, 2024



Agenda

Welcome (5 minutes)

- Introductions
- Land Acknowledgement
- Safety Moment

Presentation (25 minutes)

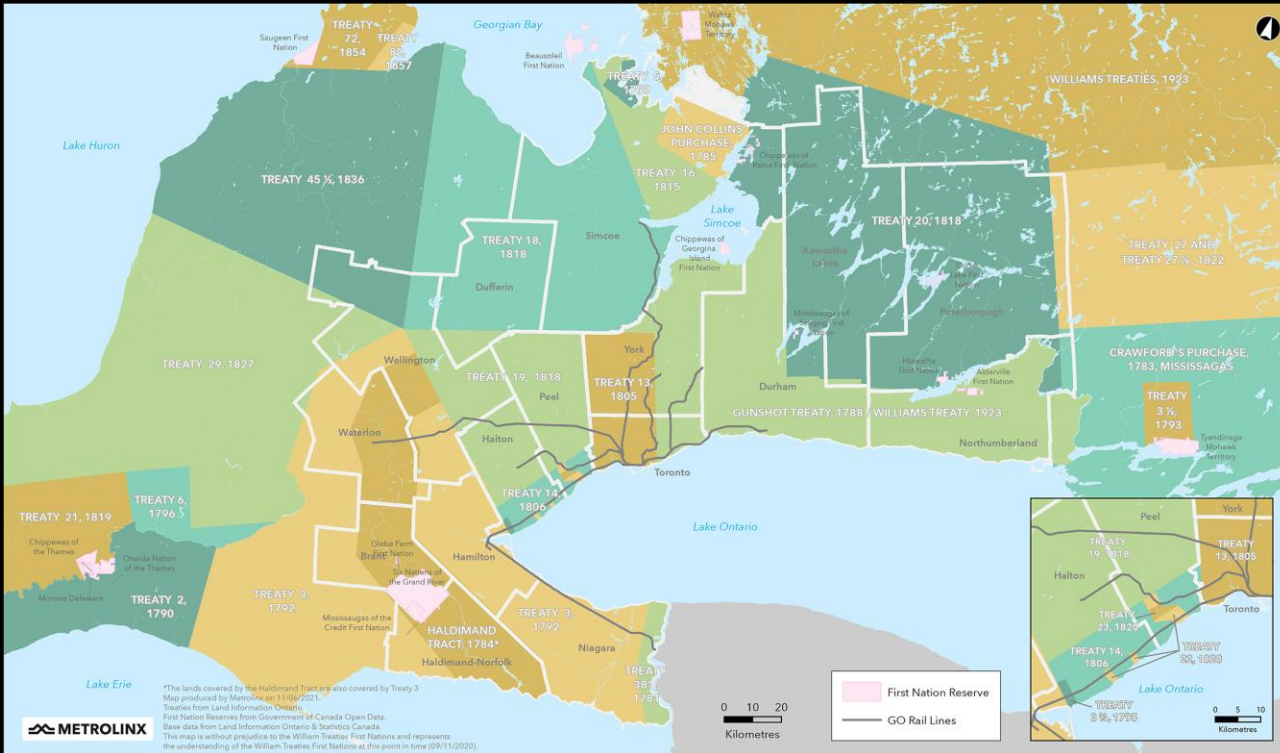
- Review of Action Items
- Moss Park Construction Updates
- Community Artwork
- Community Clean Up
- Community Engagement
- We Are Here For You

Feedback and Discussion (30 minutes)



Land Acknowledgment

Treaties and Reserves in the Greater Golden Horseshoe



Let us take a moment to acknowledge we are on lands that have been, and continue to be, home to many Indigenous Peoples including the Anishnabeg, the Haudenosaunee and the Huron-Wendat peoples.

We are all Treaty people. Many of us have come here as settlers, as immigrants or involuntarily as part of the trans-Atlantic slave trade, in this generation, or generations past.

We acknowledge the historic and continued impacts of colonization and the need to work towards meaningful reconciliation with the original caretakers of this land.

We acknowledge that Metrolinx operates on territories and lands covered by many treaties that affirm and value the rights of Indigenous communities, Nations and Peoples.

We understand the importance of working towards reconciliation with the original caretakers of this land. At Metrolinx, we will conduct business in a manner that is built on a foundation of trust, respect and collaboration.

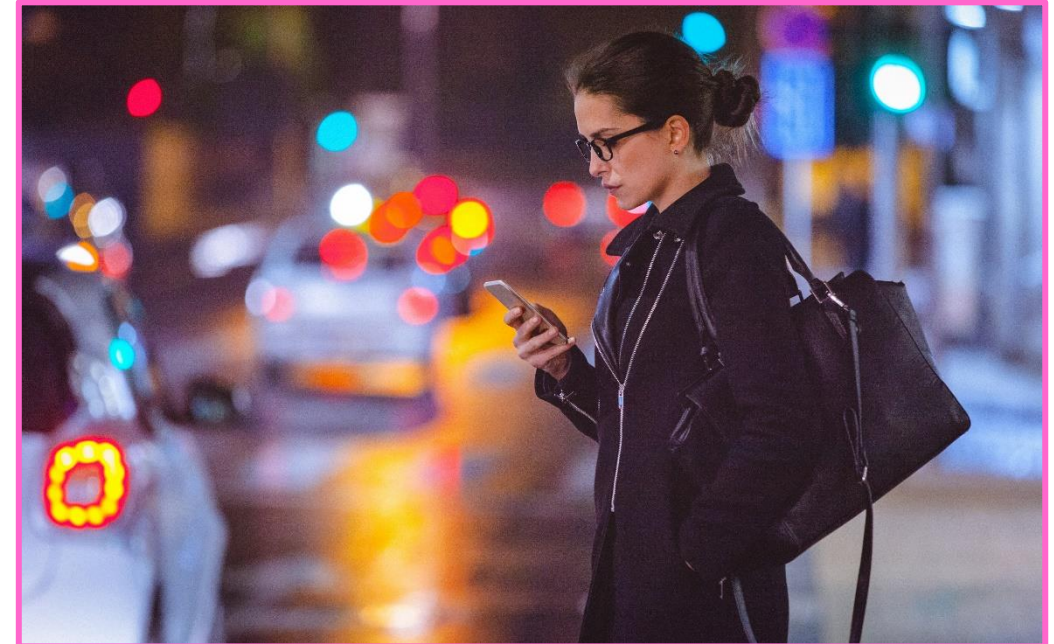
Safety Moment

Be safe. Be seen.

As the temperatures warm up and we are enticed to go out and stay out later past the sun setting, it is important to remain vigilant and visible.

To enhance your visibility and safety during darker nights, wear reflective clothing or accessories. Opt for light-colored and reflective materials that will make you easily noticeable to drivers. Carrying a flashlight or using reflective gear such as armbands can further improve your visibility, reducing the risk of accidents.

- Roads, sidewalks, and bike paths exist for a good reason - be sure you are where you belong.
- Save the high-tech distractions for full stops - pay attention when crossing lanes.
- Understand that there are others on the road that may not be visible to you - and conversely, that others may not be able to see you.
- Use reflective gear or lights to be seen.



PREVIOUS CLC MINUTES AND ACTION ITEMS

ACTION ITEM	STATUS UPDATE
<p>Metrolinx to add art proposal as an agenda item for future meetings, with the opportunity for the Moss Park Coalition to do a presentation on it.</p>	<ul style="list-style-type: none">• Metrolinx met with the Moss Park Coalition on March 4 to review their proposal. Metrolinx continues to work with OTG on an approach to adding art to the hoarding at all 7 stations. Information will be shared with the membership.
<p>Moss Park Coalition to share a list of local social enterprises for Metrolinx to include in their community engagement plan.</p>	
<p>Metrolinx to follow up on offline conversations regarding community partnerships with Garden District Residents Association.</p>	<ul style="list-style-type: none">• Metrolinx went out to Anishnawbe Health Toronto prior to the Moss Park piling session. The clinic provided contact information and will now receive notification on construction updates.
<p>OTG to take away concern related to traffic cones being left in front of retail locations.</p>	<ul style="list-style-type: none">• Crews were issued the complaint and clean-up occurred the following day
<p>Metrolinx to send out a copy of the presentation and calendar invites for all future meetings.</p>	<ul style="list-style-type: none">• Ongoing

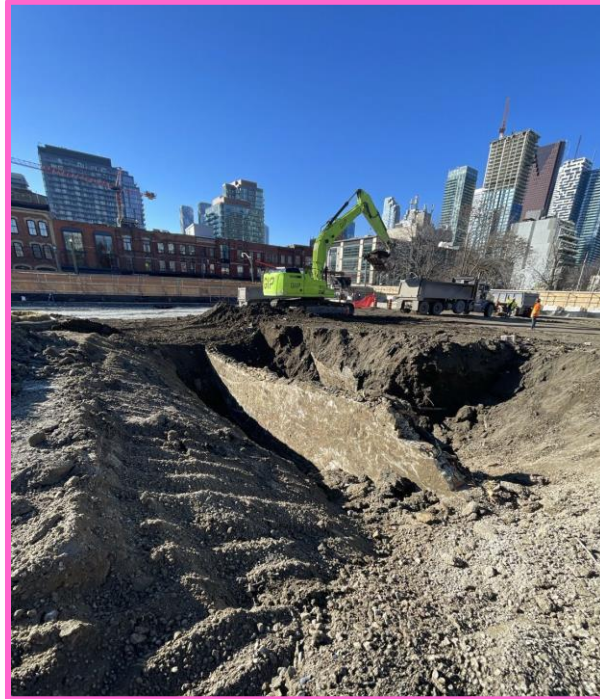
Moss Park Station

Completed Work

Completed Work

Concrete Removals and working platform remediation

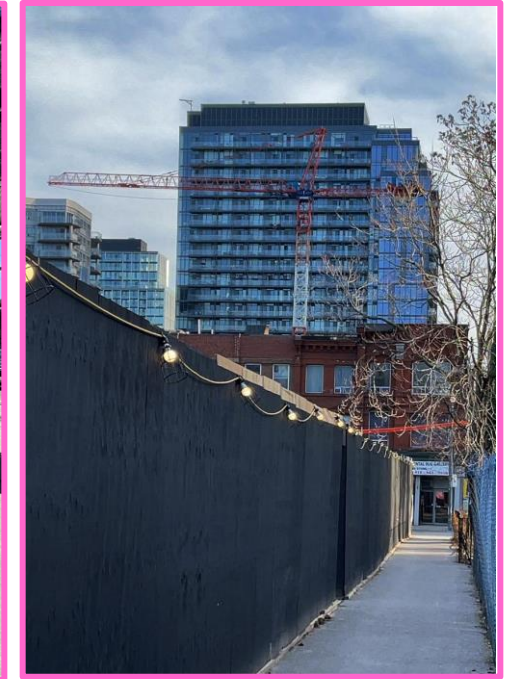
- All unsuitable material has been removed from site, allowing crews to complete the working platform. The remaining suitable fill (soil and granular) have been placed and compacted across the site, creating the necessary ground conditions for the next phase of work.



Completed Work

Hoarding + Access Gates + Turnstile Access + Additional Lighting

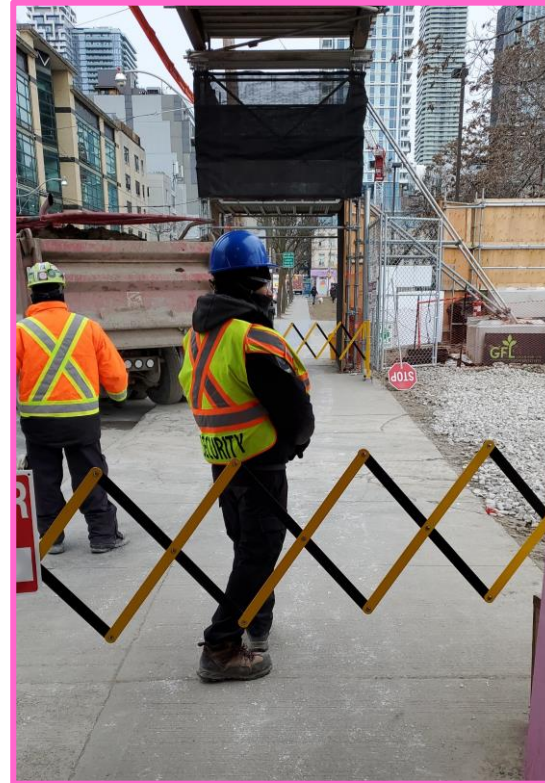
- Installation and painting of the hoarding surrounding the perimeter of park was finalized in mid-March which included two turn style gates on the west wall of the park for crew members to enter into site, away from the access points for construction vehicles and equipment.
- The laneway along the west wall has been illuminated with the installation of construction string lights for added security along this route for pedestrians heading southbound and northbound along this path.



Completed Work

Public Safety Implementations

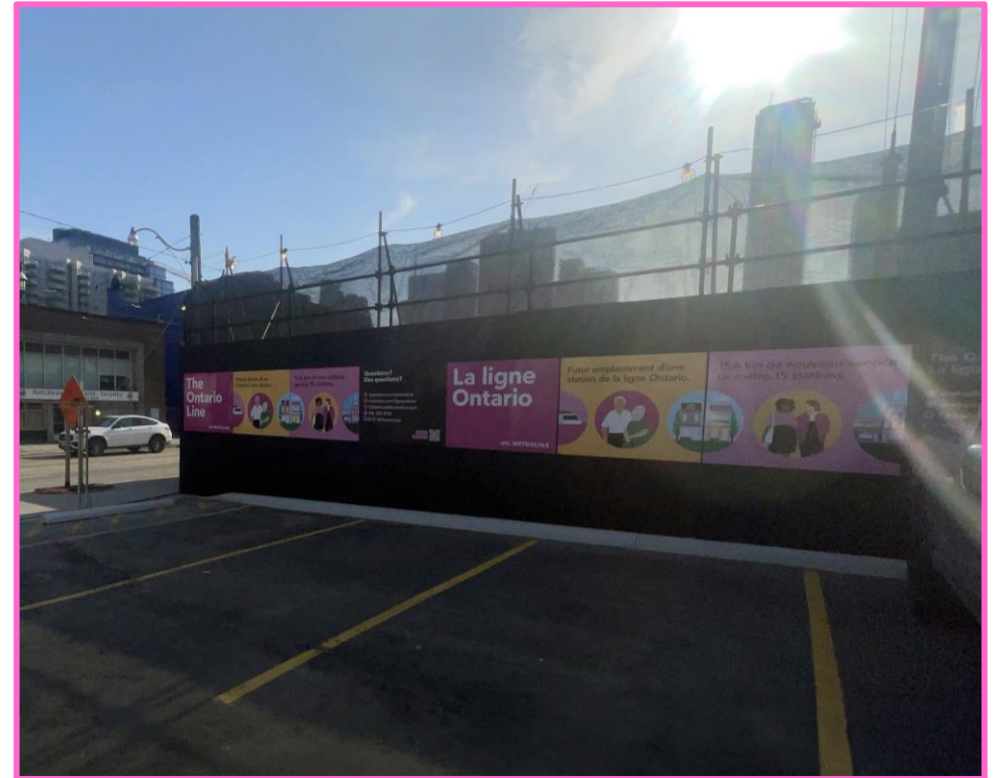
- To ensure safe interaction between construction traffic exiting and entering the site, additional features have been installed at the access gates on Sherbourne Street and Queen Street East including barrier gates and wall mounted vehicle exit signs.



Completed Work

Temporary Signage

- Plywood is painted black to protect it from the elements - this is an Ontario Line standard approach.
- Temporary coroplast project signage has been installed on the areas of the hoarding that currently have no signage, this includes project information and key contact information.
- Metrolinx remains committed to working closely with the community to collaborate on art designs that resonates and reflects the community's input.



Current Work

Current Work

Piling - Equipment & Materials Mobilization

- As construction activities progress equipment and material needs are also changing. Much of the deliveries arriving to sight in recent weeks has been used for the current phase of construction - piling.



Current Work

Piling - What to Expect

- With piling drilling, soil is being excavated. Excavated soil will be collected and hauled out of site increasing the volume of trucks coming into and out of site.
- A reminder for members of the public to be mindful and to follow the direction by flag-persons onsite when crossing the access points safely.

Haul Routes

- At the east entrance, trucks will enter from Sherbourne Street, and turn left into the site assisted by a flag-person(s).
- At the southwest exit, trucks will exit the site turning right onto Queen Street East assisted by a flag-person(s).
- All sidewalks and lanes will remain open with no impacts to the TTC stops, routes or schedules.



Current Work

Piling - Guide Wall Installation - Stages of Work



Current Work

Piling - Guide Wall Installation - Stages of Work

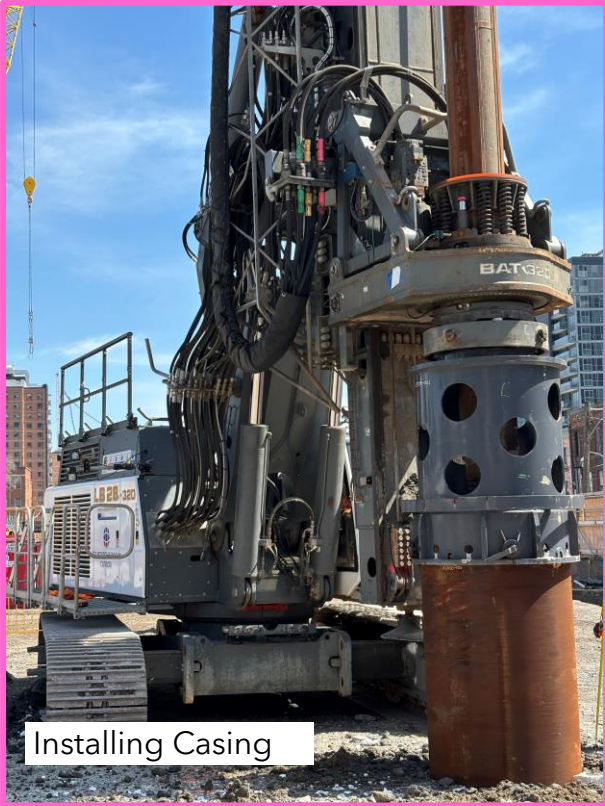


Current Work

Piling - Guide Wall Installation - Stages of Work



Drill Rig #1



Installing Casing



Clearing the spoil



Moving to a new hole

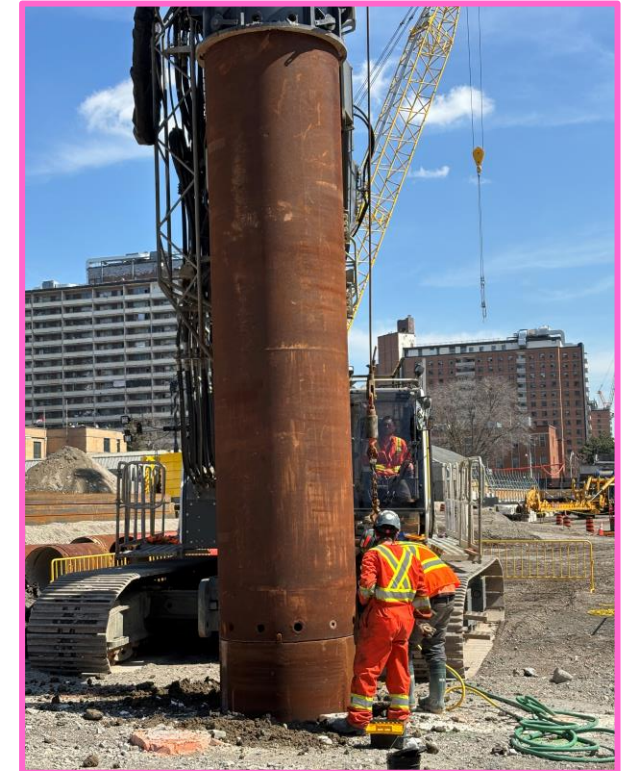
Current Work

Piling Progress

- The current rig has completed 14 secant piles to date.
- A secondary rig has begun pile drilling this week.
- Up to 40 drilled secant piles are expected to be completed weekly.

Process of guide wall pile drilling

- Installation of a guide wall around the perimeter.
- Install a casing (hollow tube).
- Reinforcements will be added and concrete poured.



Construction Lookahead

Monitoring Device Installations

Expected start date: As early as April 29, 2024

Duration: Up to six months

Hours of work: Weekdays, (Monday-Friday), 9:00 a.m. - 4:00 p.m.

Scope:

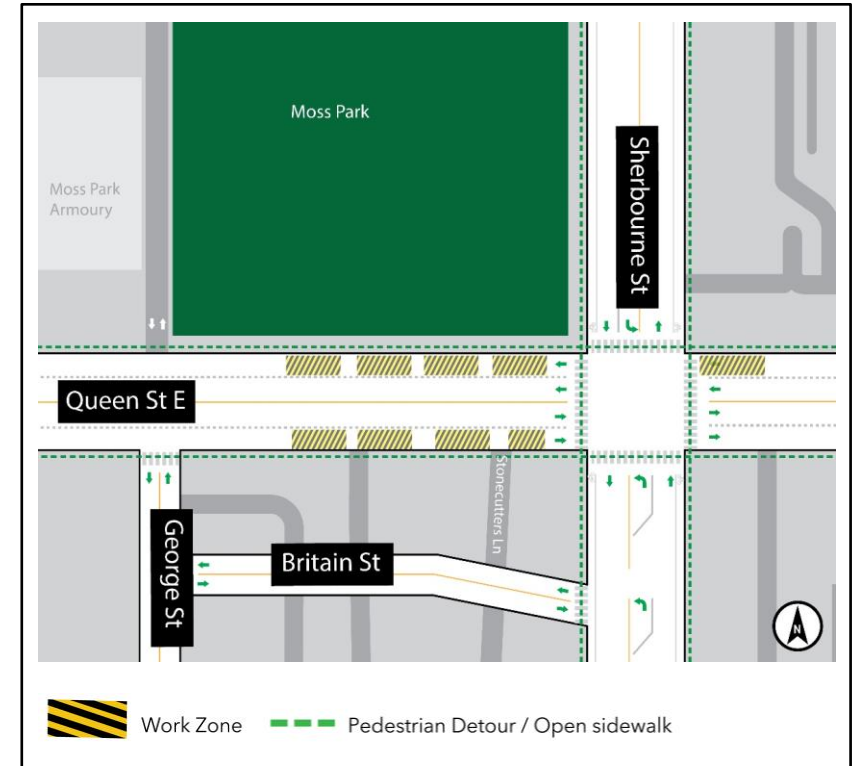
Construction crews will be conducting monitoring device installations on Queen Street East. Temporary and intermittent closures will be necessary to conduct work. Area residents can expect to hear noise from saw cutting tools and hydrovac trucks.

Crews will be onsite prior to 9:00 a.m. to set up equipment. Work zones will only be closed while crews are conducting installations.

No impacts to lanes during 4:00 p.m to 9:00 a.m.

Impacts:

The westbound curb lane on Queen Street East just east of Sherbourne Street to east of Jarvis Street and the eastbound curb lane on Queen Street East between George Street and Sherbourne Street.



Moss Park Station 2024 construction look-ahead

Major construction milestones to propel the Ontario Line subway forward.

Time	Activity	Details & Purpose
Winter/ Spring	Hoarding and signage installed	Structures to define the long-term construction zone during tunnel and station works will be installed to assist with site safety, noise mitigation and site protection.
	Piling	Piling work around the perimeter of the future station ensures structural support before heavy digging begins.
Summer	Excavation	Soils will be excavated to create shafts from the street level to the station level 30m underground.
Fall/ Winter 2025	Station site entry preparation	Excavation of the station cavern to connect the station shaft and the tunnels.

Community Artwork

Community Artwork

Update

- Metrolinx continues to work with OTG on an approach to adding art to the construction hoarding at all 7 stations.
- We are committed to ensuring the community has feedback into what goes onto the hoarding.
- We understand that the community is frustrated with the pace of roll out, and we appreciate the community's patience.
- It is important to develop a program that is fair and consistent across the 7 stations.
- The construction hoarding will remain in the park for 6 years, so we have time to get this right.
- In the meantime, Metrolinx has added project information panels to the hoarding, to minimize the amount of black hoarding.
- More information will be shared when it becomes available.



Community Clean Up

Earth Day Clean Up

Ontario Line Clean Up at Moss Park

Date: Friday April 19, 2024

Time: 12 PM- 1 PM

Meeting location:




Shuter and Pembroke Street



 METROLINX

Join the Ontario Line team on Friday, April 19 to help clean up our community for Earth Day!

Moss Park Earth Day Community Cleanup

-  April 19
-  Moss Park (Shuter Street and Pembroke Street)
-  12 to 1 p.m.

The Ontario Line will be a 15.6-kilometre subway line that will make it faster and easier to travel within Toronto and beyond. The line will bring 15 new stations to the city and will run from Exhibition Place, through the heart of downtown, all the way to Flemingdon Park. It will take nearly 30,000 cars off the road each day and reduce fuel consumption by 7.2 million litres every year.



Discussion

Community Engagement

Community Engagement

Ongoing Community Canvassing and Participation

Project staff and representatives will commence ongoing interaction with the community, for the duration of the project. Activities will include:

- Pop-ups presences in the community (parks, events, markets).
- Pop-ups in condo lobbies.
- Monthly CLC meetings.
- In-person and virtual consultation with residences and businesses.
- Shop Local digital campaigns, supporting communities affected by Ontario Line Construction.
- News, progress and information shared in the Ontario Line newsletter (currently over 6,600 subscribers).

We Are Here For You

Community Engagement Contact Information

Metrolinx will keep the community, residents and businesses informed by providing project updates, seeking input and feedback and addressing questions and concerns effectively and quickly.

Connect With Us:

- Zahrah Munas , Community Engagement Advisor Zahrah.Munas@metrolinx.com, 437-328-5354
- Mark Clancy, Senior Manager, Community Engagement Mark.Clancy@metrolinx.com, 647-449-2857

Telephone 24/7 @ 416-202-5100

Ontario Line e-newsletter @ Metrolinx.com/OntarioLine

Follow us on social media @ OntarioLine

