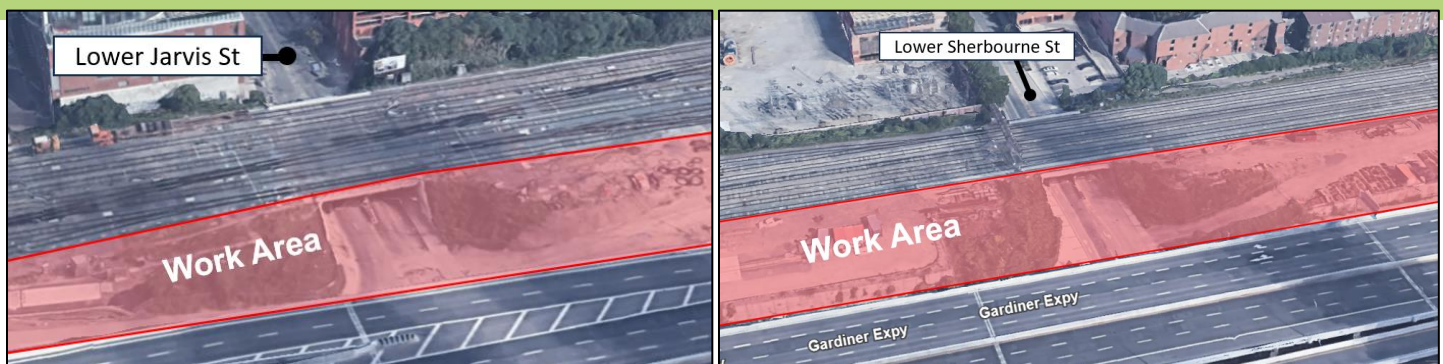


REVISED - Overnight Work: Secant Pile Wall Installations - Lower Jarvis Street and Lower Sherbourne Street

May into Fall 2024 (timeline subject to change)



What is happening?

Continuing into the summer of 2024, there will be increased construction activity at street level on Lower Jarvis Street and Lower Sherbourne Street south of the rail corridor, as work crews begin foundation work for rail bridge expansions.

To facilitate this needed work, secant pile walls will need to be installed south of the rail corridor, north of the Gardiner Expressway at both Lower Jarvis Street and Lower Sherbourne Streets. Secant pile walls are commonly used to support excavation and underground structures. They are constructed by drilling a series of overlapping concrete piles that are reinforced with rebar or beams. A drill rig, excavator, and mobile crane will be used to complete this work. As construction is underway, work locations may alternate between Lower Jarvis Street and Lower Sherbourne Street. This phase of work will generally take 4-6 weeks at each location, to include Lower Jarvis and Lower Sherbourne Streets, on both east and west banks south of the rail corridor, totalling approximately 3 months in total to complete.

Due to the complexity of the work, tight footprint and proximity to daytime live tracks, the majority of work will be done overnight. Residents closest to the rail corridor will experience an increase in noise and lighting impacts associated with this work.

Other work in this area includes excavation and installation of the new hydro duct bank from Lower Sherbourne Street to east of Cherry Street, manhole installations, and hydro work to relocate existing overhead circuits.

What does this mean for you?

The following includes a sequence of activities that will impact the area:

- Working hours: 8:00p.m. – 5:00a.m, Monday to Sunday
- Installation of secant piles at Lower Jarvis Street and Lower Sherbourne Street, south of the rail corridor, north of the Gardiner Expressway
- Adjacent communities may experience increased noise and dust during this period
- Alternating sidewalk closures on Lower Jarvis Street and Lower Sherbourne Street as needed

Long-Term Benefits

The East Track Enhancements are being completed as part of the Union Station Enhancement Project and larger GO Expansion Program.

We're removing and relocating infrastructure on the south side of the Union Station Rail Corridor east of Union Station and widening the rail bridges that pass over Lower Jarvis and Lower Sherbourne Streets. The East Track Enhancements will pave the way for two additional sections of track to be installed along the southside of the Union Station Rail Corridor, to the east of Union Station which will increase capacity and allow for future electrification as part of the larger GO Expansion Program.

Work will take place within the rail corridor between Union Station and the Don Yard Maintenance Facility, located to the east. Work outside of the rail corridor will mostly be limited to the areas at Lower Jarvis and Lower Sherbourne Streets.

After the completion of the East Track Enhancements, Metrolinx will lay tracks, modernize the signaling system and electrify core segments of the GO rail network.

Questions

If you have any questions or concerns about this work, please contact us any time at [TorontoEast@metrolinx.com](mailto:torontoeast@metrolinx.com) or (416) 202-3900. For more information on GO Expansion in your community, visit our website at [Metrolinx.com/GoExpansion](https://www.metrolinx.com/GoExpansion).

Please scan the QR Code above to subscribe to our weekly e-Newsletter for updates and select Toronto East from the menu.



We appreciate your ongoing patience and understanding of this necessary work. Dates subject to change.

Contact Us:

✉ Write to us at: torontoeast@metrolinx.com;

☎ By telephone (416) 202-3900

🐦 Find us on Twitter [@GOExpansion](https://twitter.com/GOExpansion)

🌐 Visit the website: www.metrolinx.com/projects-and-programs/go-expansion

✉ Disponible en français sur demande. Si vous êtes intéressé, veuillez envoyer un courriel à: torontoeast@metrolinx.com