

Interpretation and Commemoration Plan - Update

COLLABORATION & CONSULTATION: PUBLIC FEEDBACK RECAP

The Interpretation and Commemoration Plan (ICP) builds on the work and engagement that took place as part of the City of Toronto's First Parliament Site Heritage Interpretation Strategy (HIS) in 2018 & the City of Toronto's Master Plan for the First Parliament Site (2021).

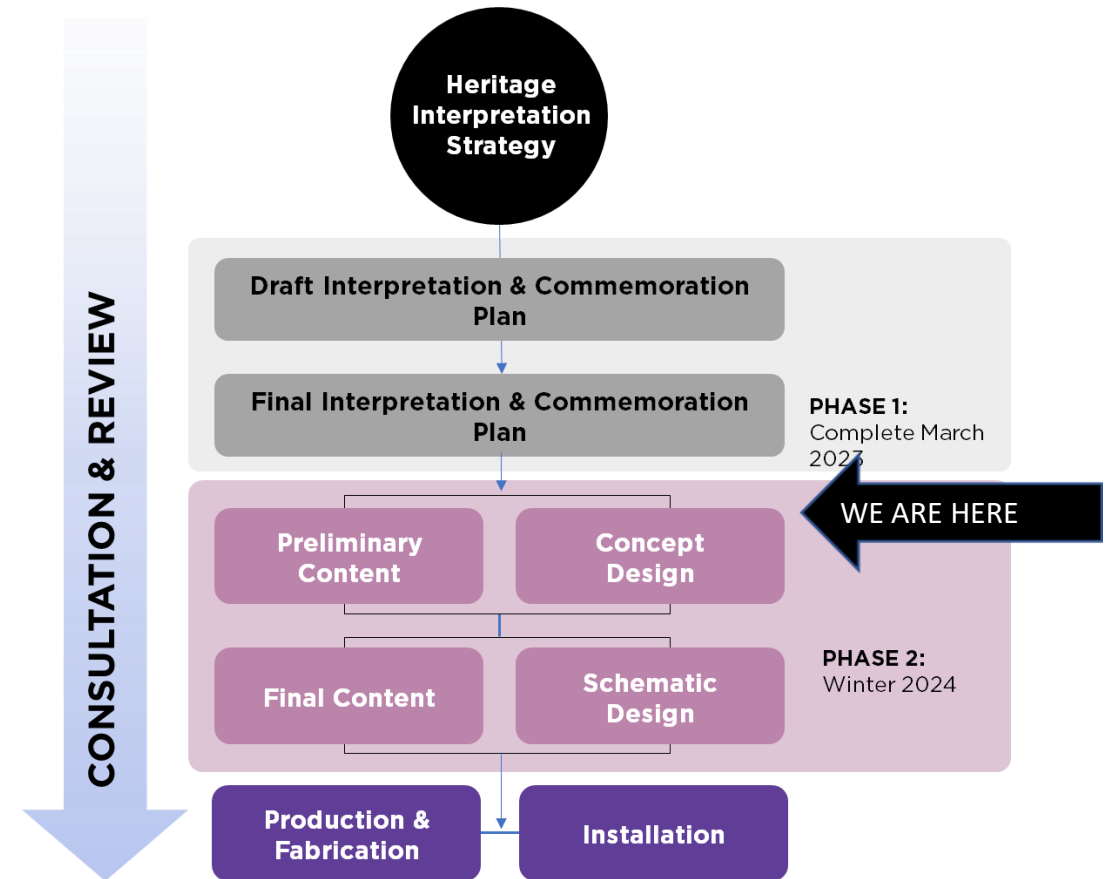
It has further been informed and refined through ongoing consultation on the key themes, as well as cross-cutting themes, including the following activities:

- **Online Survey**

- Opened November 17, 2021 and closed December 17, 2021 via Metrolinx Engage website
- Accompanied by a pre-recorded presentation that walked participants through the key themes identified by the City of Toronto's First Parliament Heritage Interpretation Strategy
- Respondents were asked to rank key themes, as well as cross-cutting themes
- Survey was promoted via social media and at the Ontario Line Virtual Open Houses held on November 23 and 25, 2021. A total of 173 unique respondents participated in the survey

ICP PROGRESS UPDATE

- Currently in Phase II: Content Development
- On-going bi-weekly content development meetings in collaboration with Ontario Heritage Trust
- Monthly meetings with First Parliament Working Group
- Presentation of the ICP and invitation to further participate in the process with several Indigenous Nations and communities
- Content conversations with experts in Archaeology of the Americas at the ROM and in Black Canadian history
- Integration of finds from on-going archaeological work into the ICP content

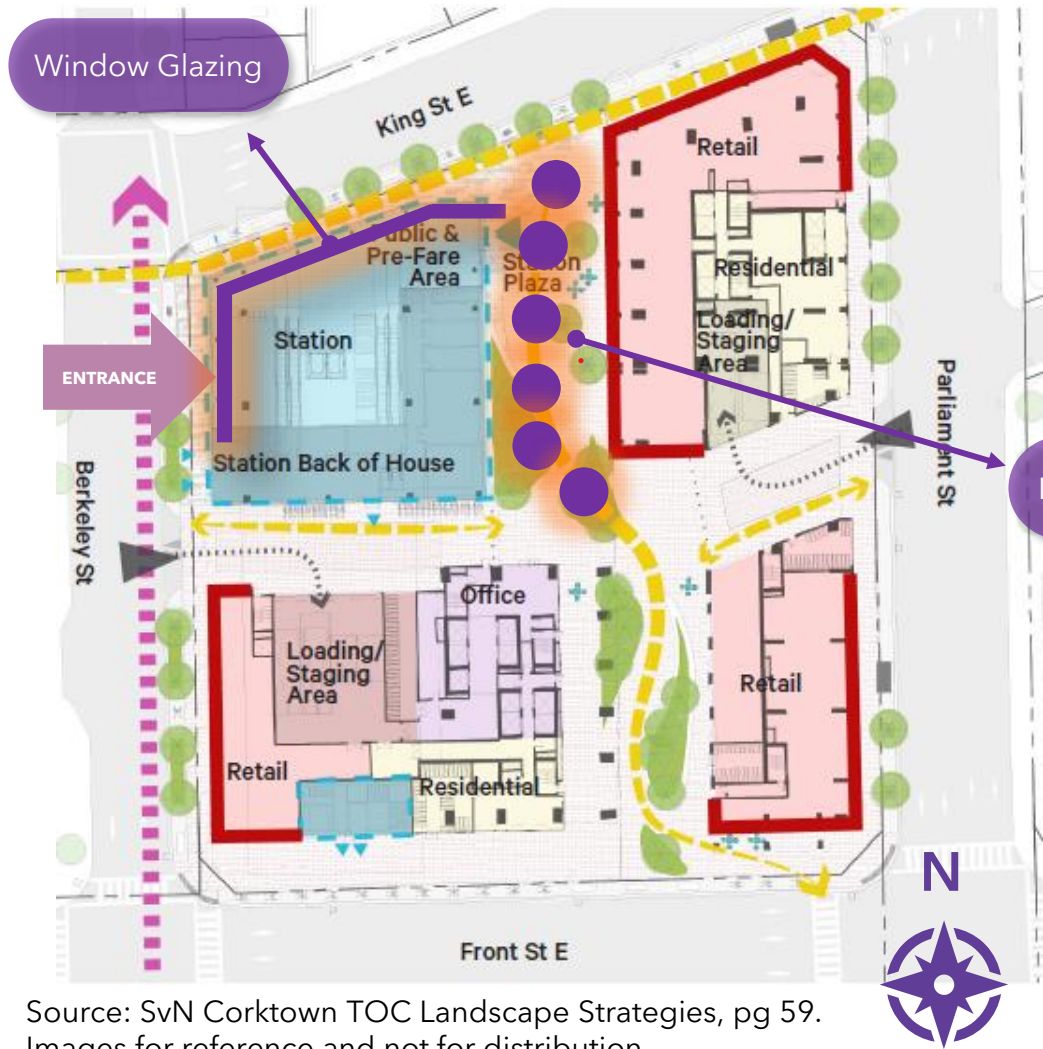


CORKTOWN STATION RENDERING: INTERIOR INTERPRETATION

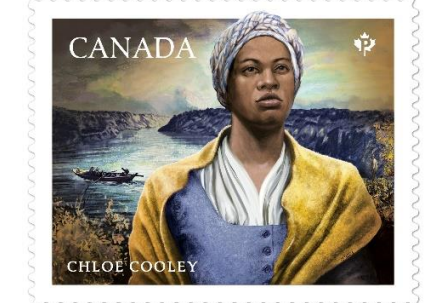
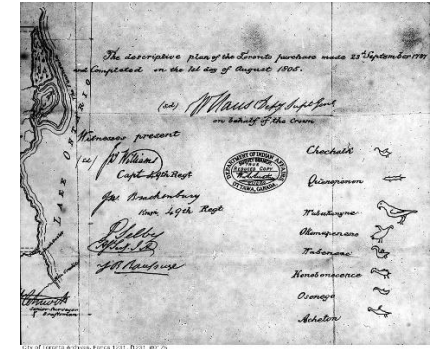
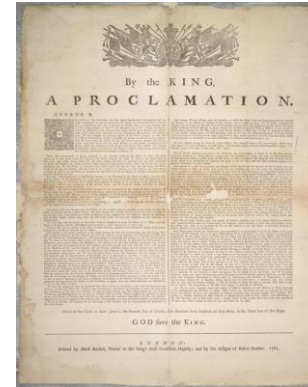
The rendering shows a multi-level interior with a central staircase and glass-walled sections. Purple callouts point to specific areas: 'Street-Level Entrance Graphics' at the top, 'Concourse Graphics: Natural Environment Archaeological Layers' on the left, 'Platform Engravings' at the bottom left, and 'Landing Graphics: Timeline, First Parliament Artifacts' on the right. Reference images include a stone artifact, a historical map, a stone fragment, a pottery fragment with a scale bar, a person on a platform, a street-level house sketch, a building elevation, a landscape painting, a collection of buttons, and a historical black and white photograph.

Render of Corktown Station: interior cross-section. Station design subject to change
 Source: B.1-1.3 Corktown Station Design Report pg 27. Images for reference and not for distribution.

CORKTOWN STATION SITE PLAN: EXTERIOR INTERPRETATION



Source: SvN Corktown TOC Landscape Strategies, pg 59. Images for reference and not for distribution.



Interpretive "Nodes"

- **Indigenous Sovereignty**
- **Indigenous-British Relations**
- **Treaties & The Toronto Purchase**
- **Racism, Slavery and Abolition in Upper Canada**
- **Legislation of First & Second Parliament**
- **War of 1812 & Occupation of York**



Exterior site plan showing two station entrances and public greenspace. Exterior/Laneway = yellow-dashed lines. Station design subject to change.