

Ontario Line

Queen - Spadina

Construction Liaison Committee

May 7, 2024



Agenda

Welcome

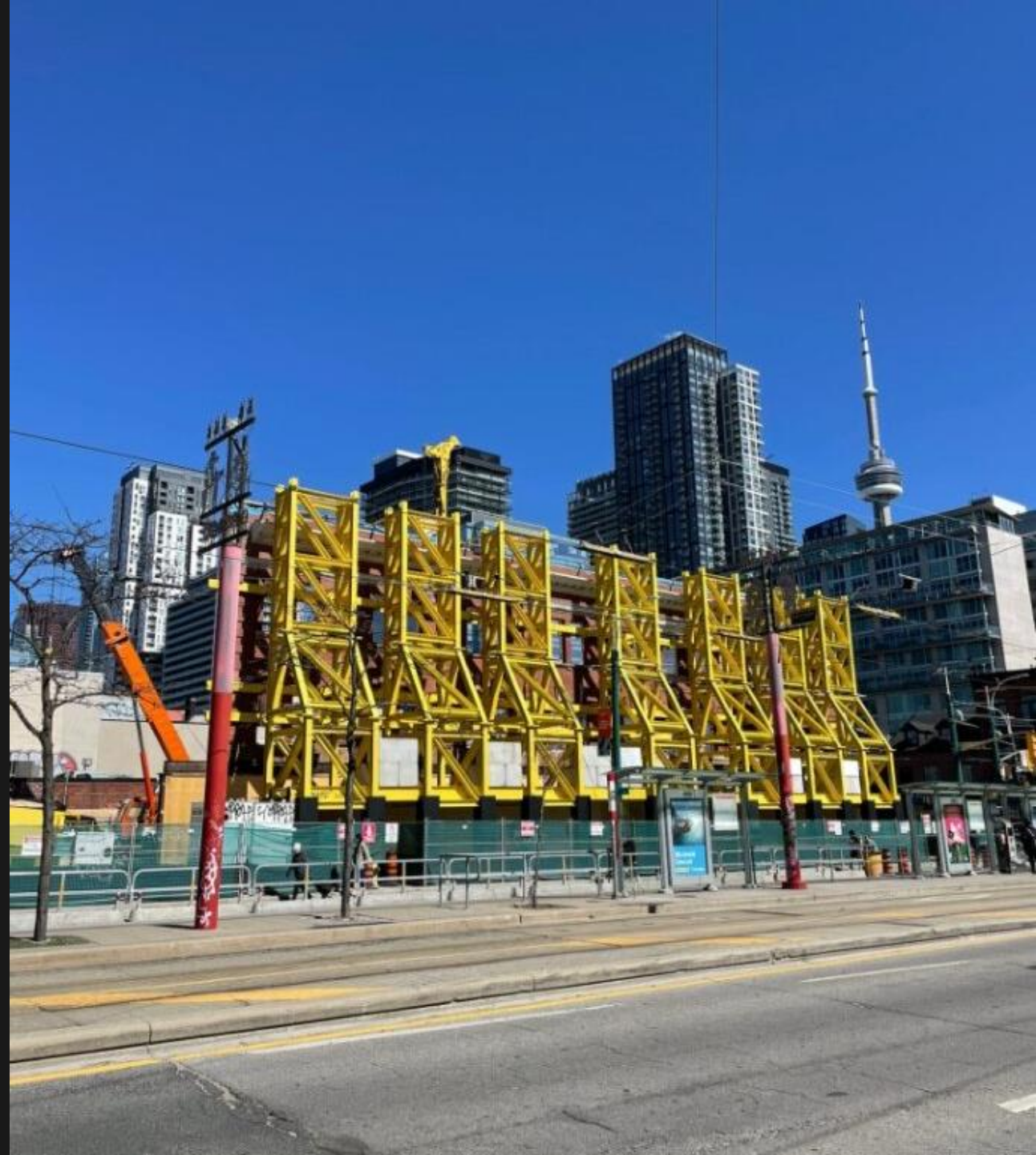
- Introduction
- Land Acknowledgment
- Safety Moment

Presentation

- Construction Update
- Upcoming works

Q/A and Discussion

- Community Engagement
- Contact Us



Land Acknowledgment

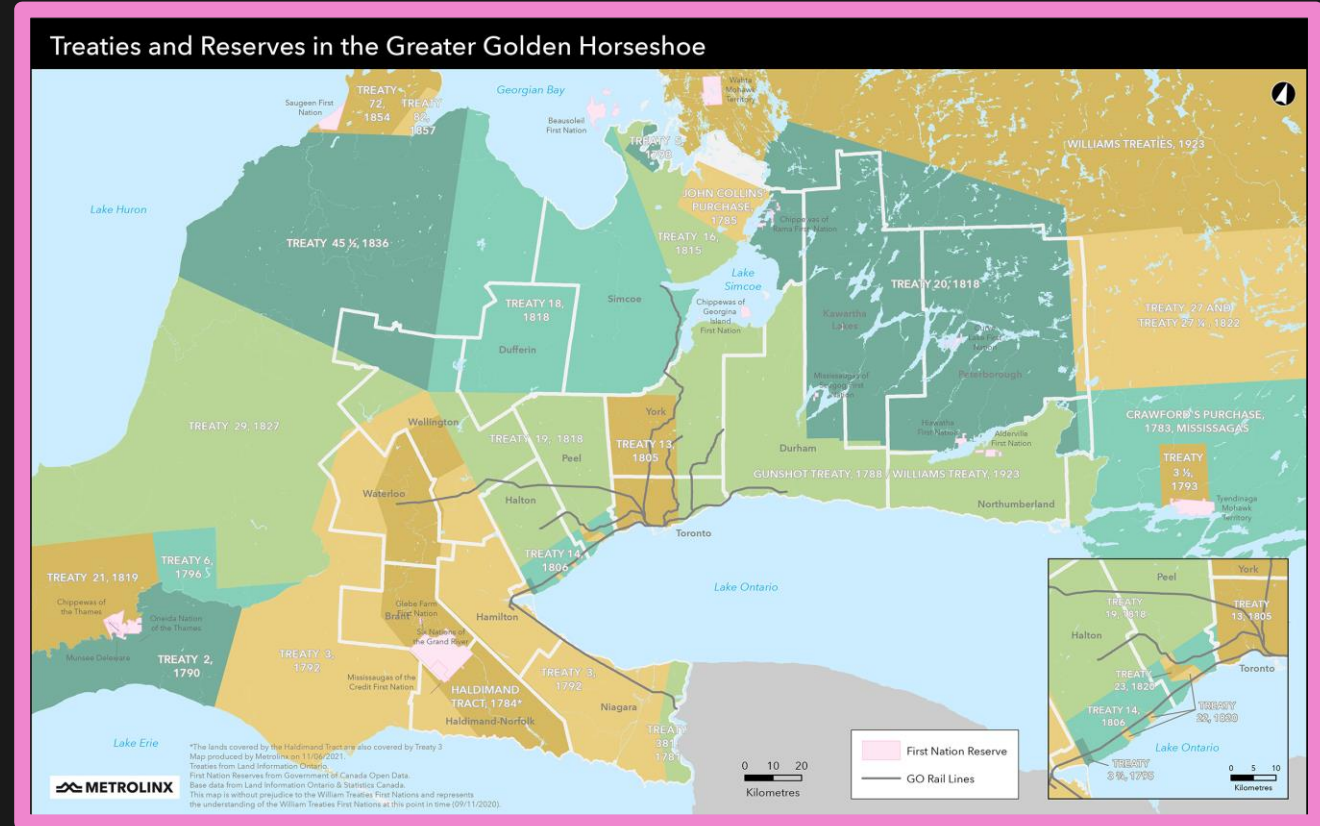
Let us take a moment to acknowledge we are on lands that have been, and continue to be, home to many Indigenous Peoples including the Anishnabeg, the Haudenosaunee and the Huron-Wendat peoples.

We are all Treaty people. Many of us have come here as settlers, as immigrants or involuntarily as part of the trans-Atlantic slave trade, in this generation, or generations past.

We acknowledge the historic and continued impacts of colonization and the need to work towards meaningful reconciliation with the original caretakers of this land.

We acknowledge that Metrolinx operates on territories and lands covered by many treaties that affirm and value the rights of Indigenous communities, Nations and Peoples.

We understand the importance of working towards reconciliation with the original caretakers of this land. At Metrolinx, we will conduct business in a manner that is built on a foundation of trust, respect and collaboration.



SAFETY MOMENT

Navigating City Streets Safely: A Bicycle Safety Moment

- **Know your route:** Familiarize yourself with planned routes, favoring streets with bike lanes or lower traffic. Utilize cycling maps or apps for bike-friendly paths.
- **Visibility is Key:** Enhance visibility with bright or reflective clothing, front and rear lights, and reflective tape for all-around visibility, especially in low-light conditions.
- **Follow Traffic Laws:** Treat your bike like a vehicle, obeying signals, signs, and lane markings. Clearly signal intentions with hand signals and prioritize predictability for safe road sharing.
- **Stay Alert and Aware:** Vigilantly scan surroundings for hazards like potholes, opening car doors, and pedestrians. Avoid distractions such as headphones or texting to maintain quick reaction times.
- **Mind Your Speed:** Adjust speed to traffic flow and road conditions, maintaining a safe distance from vehicles. Avoid abrupt maneuvers and excessive speeds to minimize collision risks.
- **Use Bike Infrastructure Wisely:** Utilize designated bike lanes and paths, staying vigilant for parked cars and right-turning vehicles. Assertively position yourself within your lane when sharing the road.

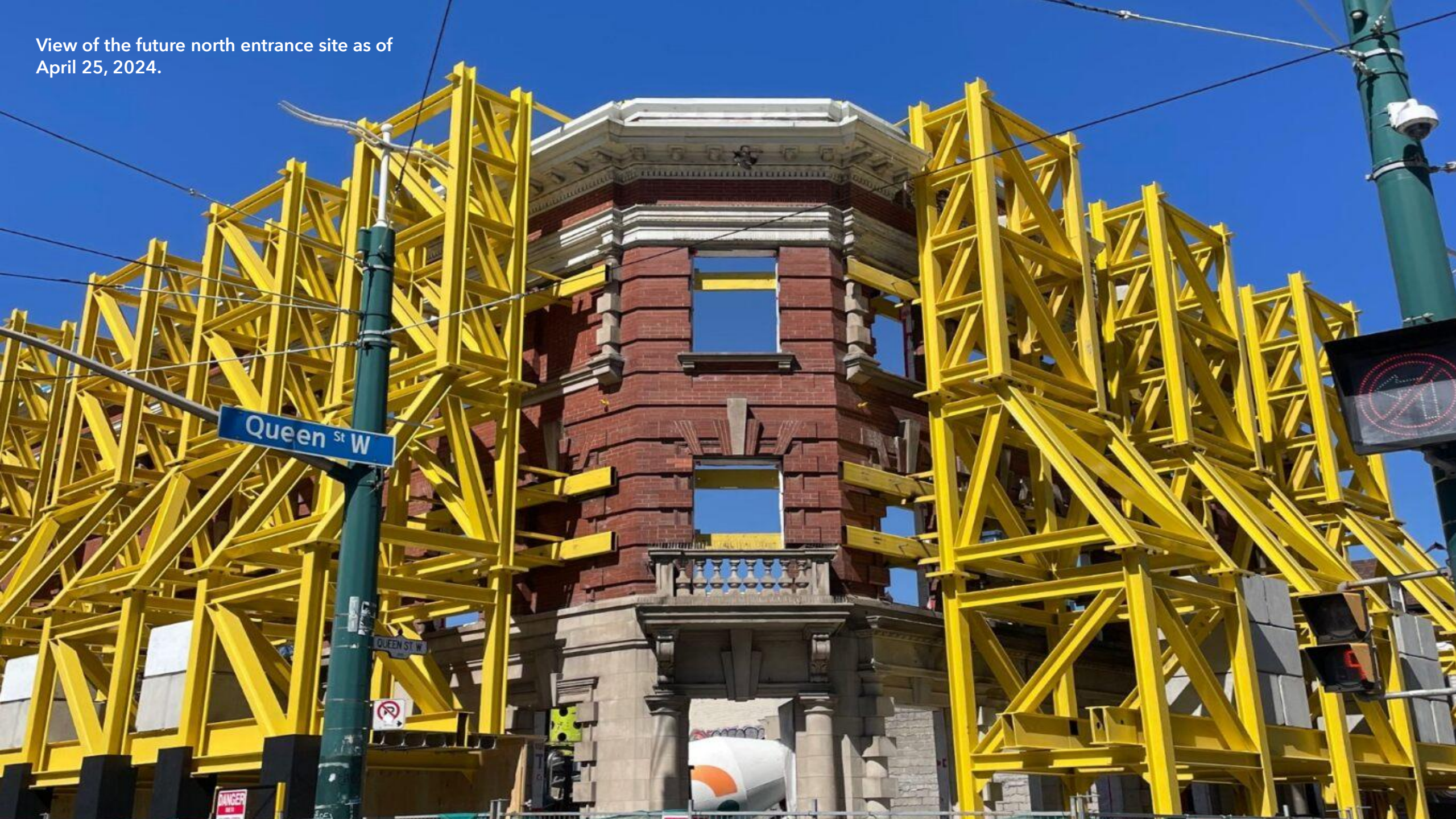


PREVIOUS CLC AND MINUTES ACTION ITEMS

ACTION ITEM	STATUS UPDATE
<ul style="list-style-type: none">1. Metrolinx to discuss feedback on the station's connection with the City of Toronto Chinatown study, preservation of landmarks, and design of the station and surrounding public settings.	Metrolinx and City of Toronto coordinating
<ul style="list-style-type: none">2. Metrolinx/OTG to address eastbound TTC stops on Queen Street, which are currently obscured by construction signs.	OTG examining signage and discussing with TTC

Construction Update

View of the future north entrance site as of April 25, 2024.



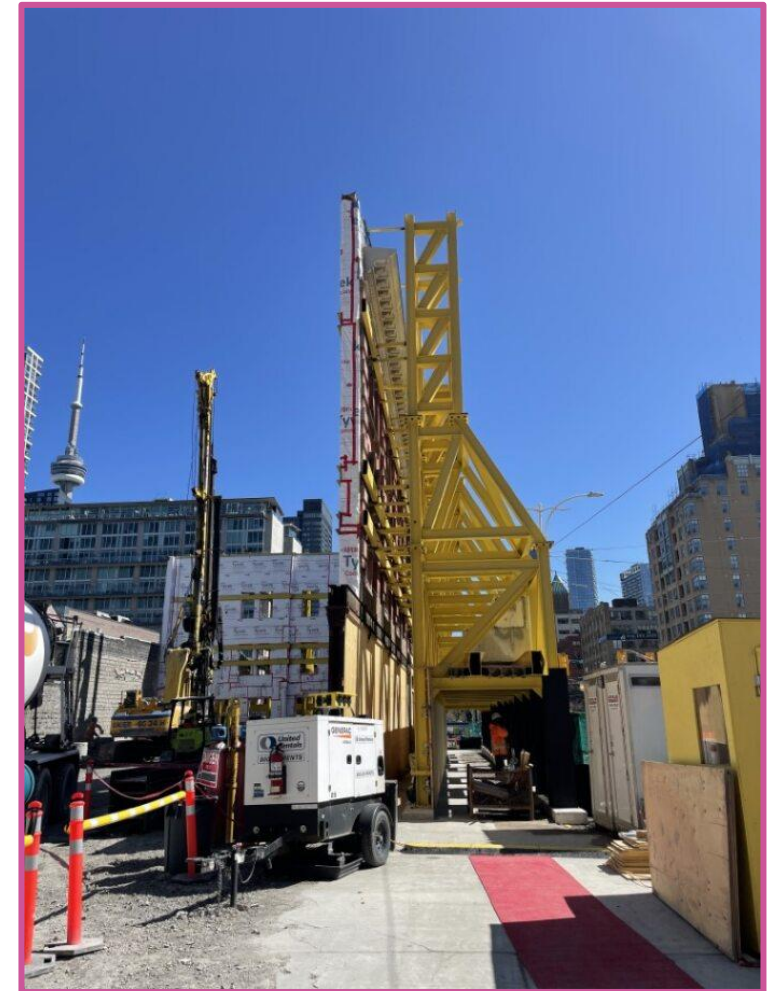
WORK IN PROGRESS - FUTURE NORTH ENTRANCE

Work in progress

- Approximately 40 piles have been installed (roughly 31% completion).
- Upcoming working hours: 7:00 a.m. to 11:00 p.m. Monday to Friday. Saturdays from 7:00 am to 5:00 pm, until the beginning of June.
- The next phase of work includes installation of piles to support the future Transit Oriented Community and excavation of the station shaft.
- Piles installed act as foundations for future excavation work.
- Installation of construction hoarding along Spadina Avenue.

Recently completed

- Overhead protection hoarding under façade retention towers.



View of ongoing works at the future North station site as of April 25, 2024

FUTURE NORTH ENTRANCE



Interior site view of retention towers



View of crane onsite, used to support pile drilling



View of piling drill

WORK IN PROGRESS – FUTURE SOUTH ENTRANCE

Work in progress

- Approximately 148 piles have been installed (roughly 83% completion)
- Piling is expected to continue from 7:00 a.m. to 5:00 p.m. through mid-July; some Saturday shifts are expected.
- The next phase of work includes installation of piles to support the future Transit Oriented Community.
- Piles installed act as foundations for future excavation work.
- Temporary hoarding along Queen Street West.

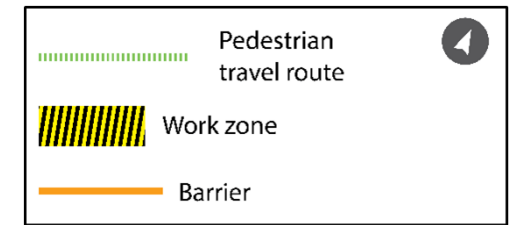


View of the future south station entrance as of April 25, 2024

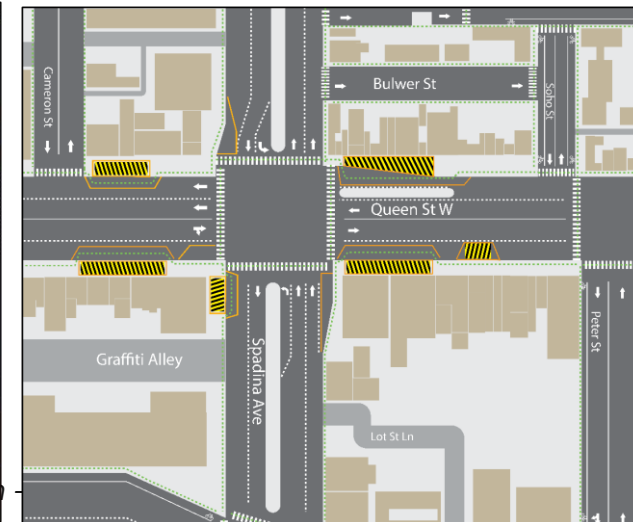
UPCOMING WORK

Monitoring works - Queen Street West and Spadina Avenue

- Underground monitoring devices will be installed in the identified locations to investigate utilities and ground conditions.
- Installations ensure existing underground utilities are accounted for, or moved, in advance of excavation.
- The work is scheduled to begin as early as May 6, 2024, and is expected to be completed within two (2) months.
- Work will take place on weekdays (Monday-Friday), 7:00 a.m. to 5:00 p.m.



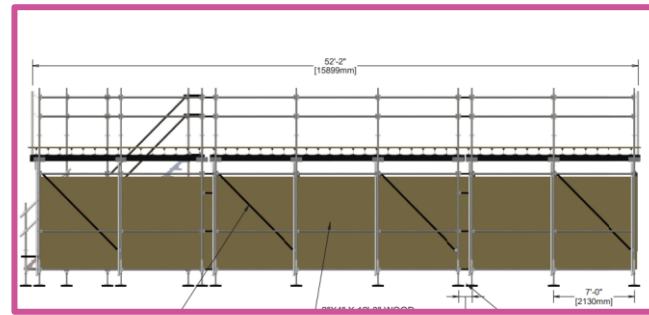
Map of work areas



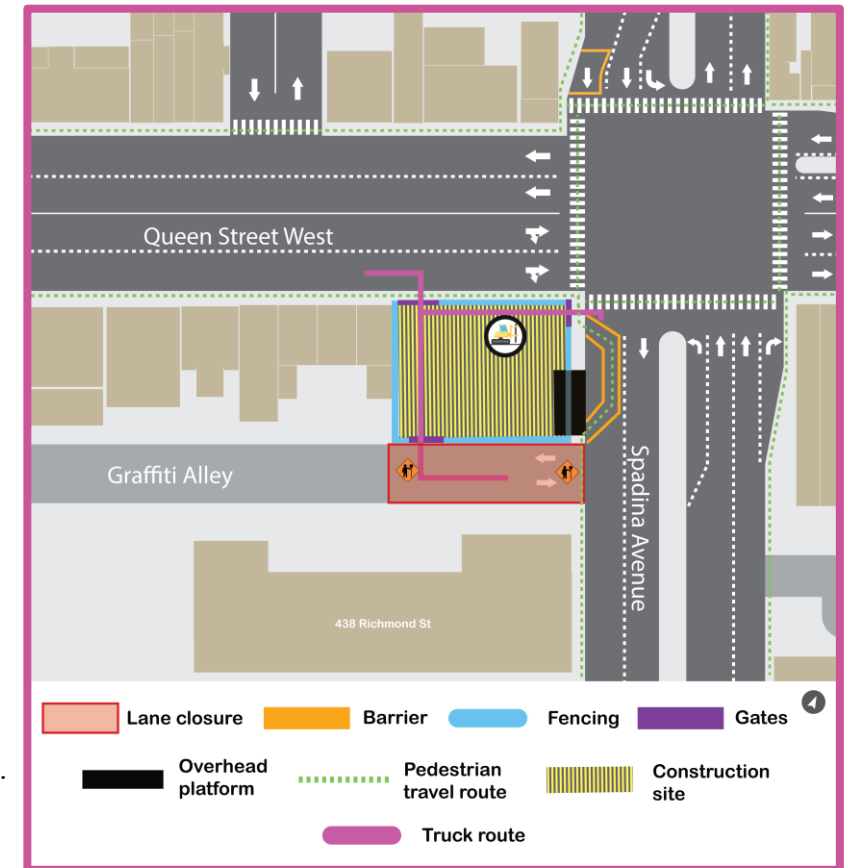
UPCOMING WORK

Platform installation for temporary power substation - future south entrance

- Overhead protection and a power substation is being installed along Queen Street West and Spadina Avenue, creating a covered pedestrian walkway.
- Work will require access to the sidewalk; pedestrians will detour around the works during the installation - see map.
- Work is expected to start mid-May, with completion end of June 2024.
- This work is expected to occur during weekdays, between 7:00 a.m. to 5:00 p.m.



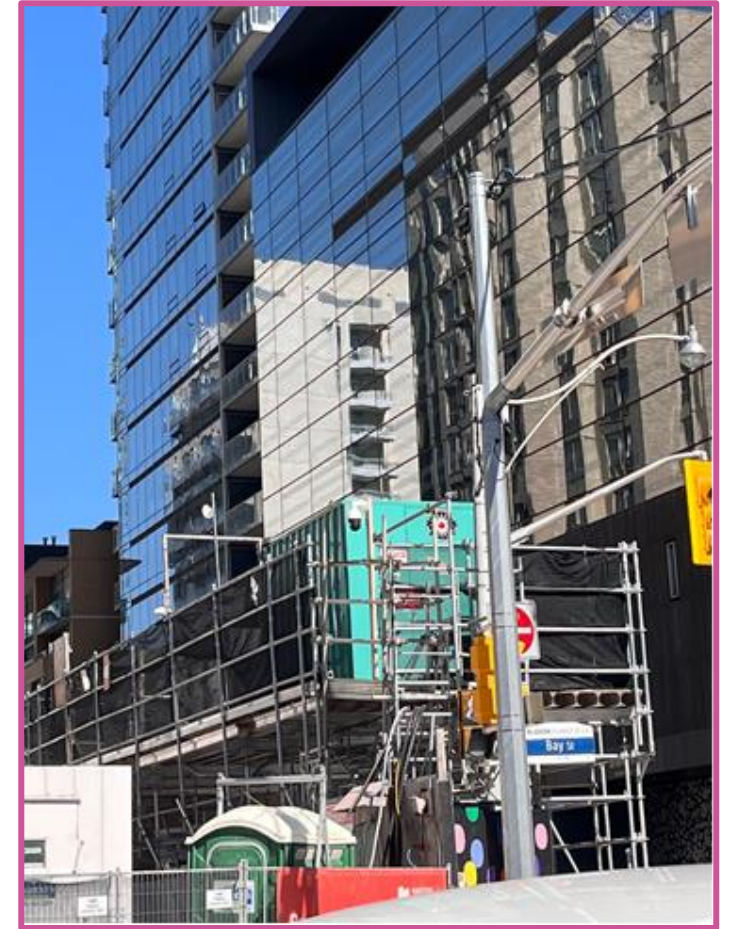
Sample working platform - drawing provided for example only



ABOUT POWER SUBSTATIONS

Why install a power substation on-site?

- Installing a power substation on a construction site provides essential electricity supply for various operations, including powering heavy machinery, tools, and temporary facilities like offices and lighting.
- This replaces the need for generators to power machinery on-site.
- It ensures uninterrupted workflow, safety compliance, and facilitates efficient project management by minimizing downtime and maximizing productivity.
- Additionally, it offers flexibility in accommodating evolving power needs as the construction progresses.



Sample view of an elevated platform for a power substation

2024 CONSTRUCTION LOOK-AHEAD

Queen-Spadina			
Time	Activity	Location	Details & Purpose
Spring / Summer 2024	Piling	North and south station entrances	Piling to ensure structural support for the future station shafts, expected to be completed in summer 2024
Summer 2024	Hoarding Reconfiguration + Installation	North and south station entrances	Hoarding to ensure site safety, work is underway and expected to be completed in late spring 2024
Summer 2024	Signage Installation - Phase One	North and south station entrances	Installation of phase one marketing signage expected to be completed by summer 2024; Metrolinx and OTG are also exploring beautification opportunities for the sites (i.e. artwork)
Summer/Fall 2024 to 2025	Excavation	North and south station entrances	Initiate excavation of shafts to the station level, to provide connection with future station platforms

Estimated station substantial completion date: 2030

**dates subject to change based on unforeseen circumstances

Discussion

Community Engagement

Staying connected during construction

In-person and virtual consultation with residences and businesses

- Our door is open: share your feedback and questions or concerns with us.

Monthly CLC meetings

- Regular community meetings to discuss upcoming works and share information.
- Next meeting: June 4, 2024 (daytime)
 - We welcome your feedback on meeting times – please connect!

Construction notices and updates

- Prepared and distributed prior to new / impactful construction work; contact us to be added to the distribution list.

News, updates and information shared in the Ontario Line newsletter

- Sign up for regular updates and information.

We are here for you

Metrolinx will keep the community, residents and businesses informed by providing project updates, seeking input and feedback, while addressing questions and concerns effectively and quickly.

Connect with us:

Bradley Naismith, Advisor, Community Engagement

Email OntarioLine@metrolinx.com

Telephone 24/7 @ 416-202-5100

Ontario Line e-newsletter @ [Metrolinx.com/OntarioLine](https://metrolinx.com/OntarioLine)

Follow us on social media:

X / Facebook / Instagram @OntarioLine



Paste the QR Code of Metrolinx
e-newsletter subscription

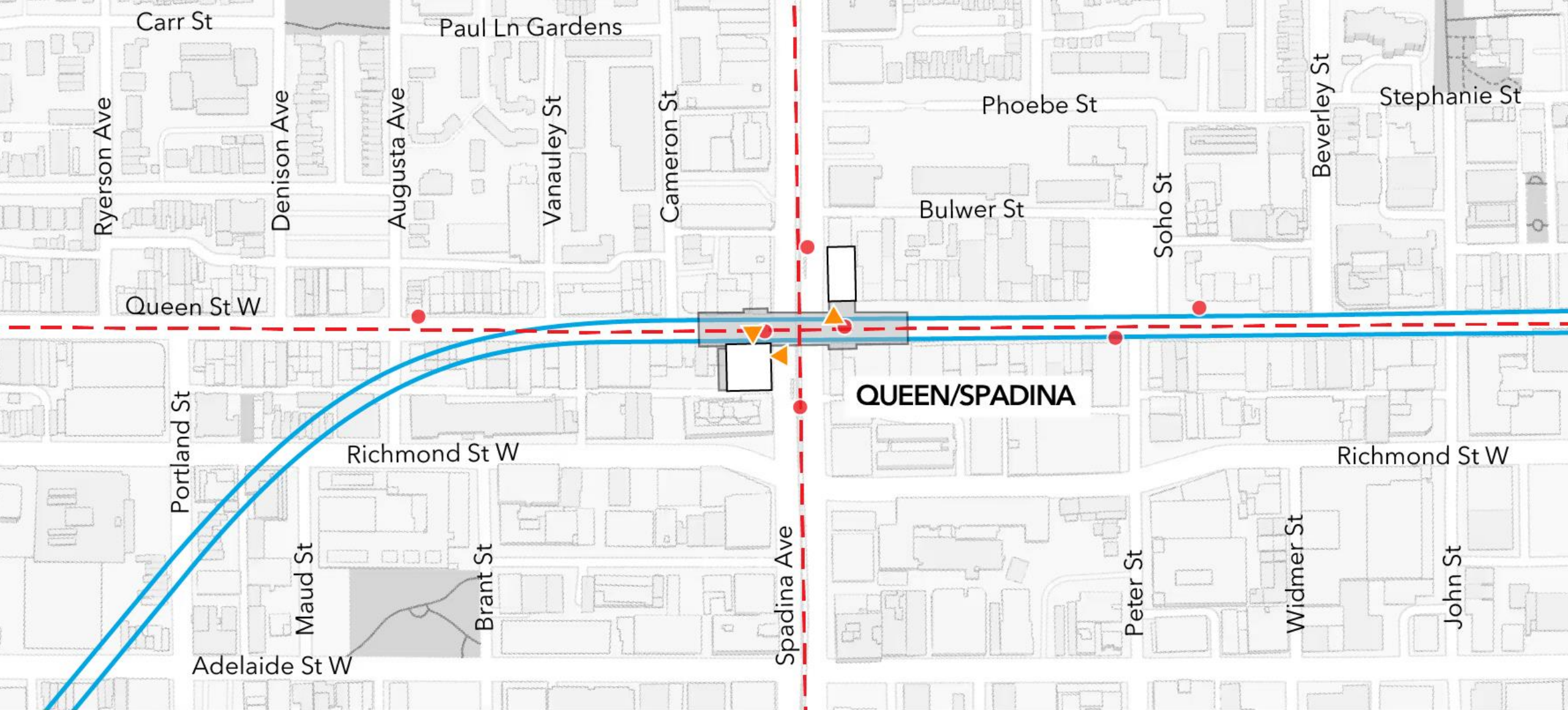




Artist's rendering — subject to change. Transit-Oriented Community proposals not shown.



Artist's rendering – subject to change. Transit-Oriented Community proposals not shown.



Queen/Spadina Station

- | | | |
|----------------|------------------|--------------------------|
| Tunnelled | Streetcar Stop | Station Building |
| Streetcar Line | Station Entrance | Underground Station Area |

Note: Heritage attributes will be conserved where possible.



0 100 metres

METROLINX