

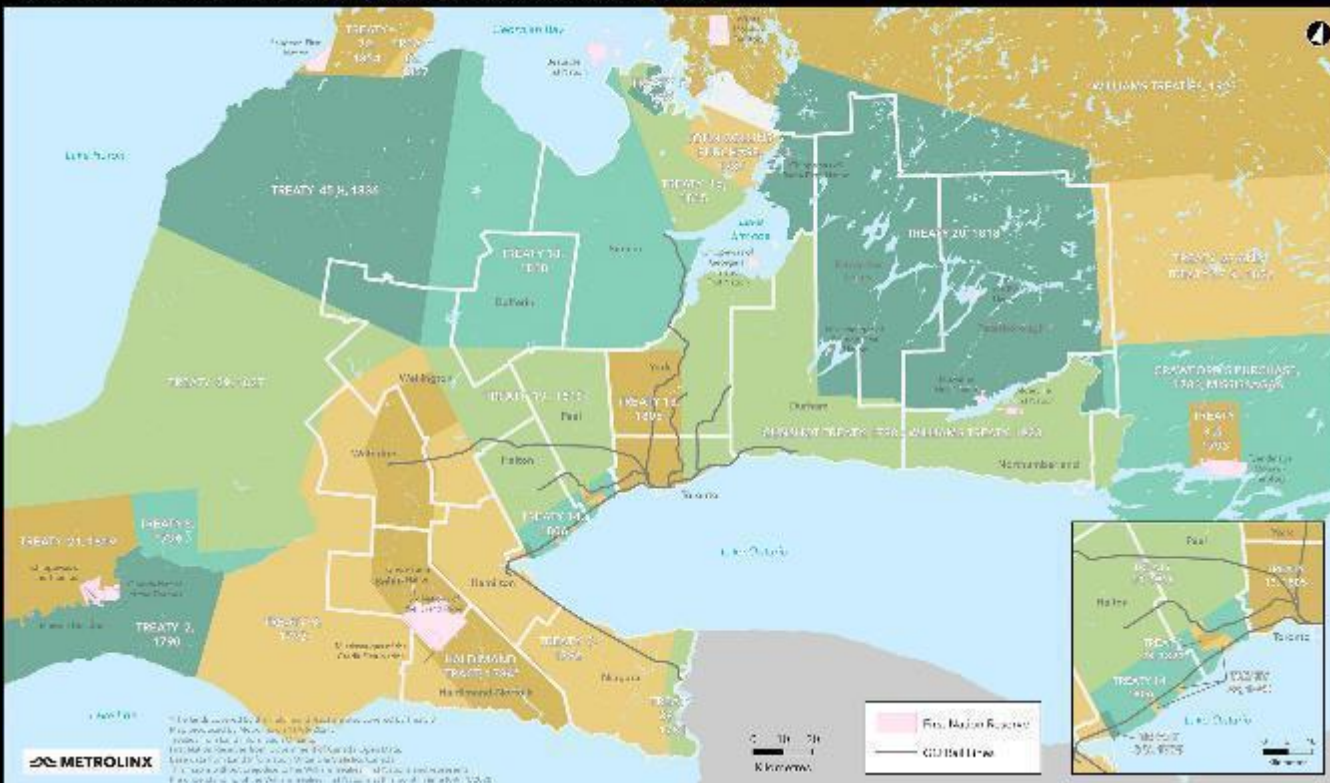


**The Ontario Line
Lakeshore East Joint Corridor
Early Works
Construction Liaison Committee**

May 16, 2024

LAND ACKNOWLEDGMENT

Treaties and Reserves in the Greater Golden Horseshoe



Let us take a moment to acknowledge we are on lands that have been, and continue to be, home to many Indigenous Peoples including the Anishnabeg, the Haudenosaunee and the Huron-Wendat peoples.

We are all Treaty people. Many of us have come here as settlers, as immigrants or involuntarily as part of the trans-Atlantic slave trade, in this generation, or generations past.

We acknowledge the historic and continued impacts of colonization and the need to work towards meaningful reconciliation with the original caretakers of this land.

We acknowledge that Metrolinx operates on territories and lands covered by many treaties that affirm and value the rights of Indigenous communities, Nations and Peoples.

We understand the importance of working towards reconciliation with the original caretakers of this land. At Metrolinx, we will conduct business in a manner that is built on a foundation of trust, respect and collaboration.

Agenda

1. Welcome:

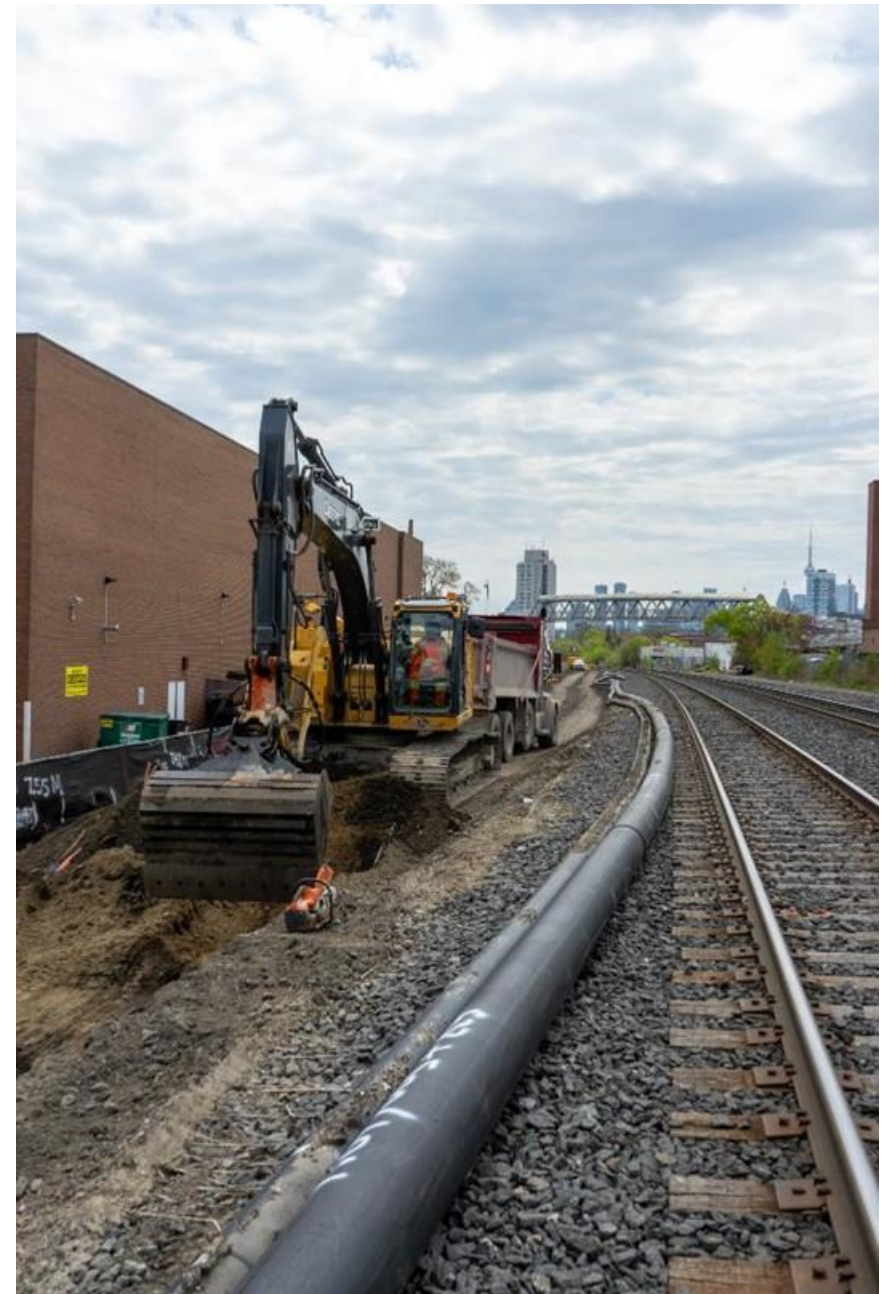
- Land Acknowledgement
- Safety Moment
- Action Items
- Complaints and Issues Tracker

2. Noise and Vibration Update - April 2024

3. Construction Updates

- Bridges update
- In-Corridor Work
- 2024 lookahead
- Eastern Avenue Bridge

4. Discussion/Next CLC



Safety Moment - Sun safety

Be ready for strong UV rays and long sunny days

- If you're re-using sunscreen from last summer, make sure it has not expired.
- Limit your time in the sun when the sun's rays are most intense, especially between 10 a.m. and 2 p.m.
- Apply high-FPS sunscreen to all uncovered skin.
- Protect your eyes from UV rays with sunglasses.
- Remember that UV rays are still present even on cloudy days



April CLC Action Items - Completed

#	Action	Response	Status
1	Metrolinx to confirm if 6-month lookahead link in the Metrolinx newsletter is feasible.	Update: The newsletter is not the correct forum to share construction Lookaheads. Alternatively, Metrolinx has added the lookahead as a separate tab on the CLC website and can be found here . This will be updated under each CLC tab and will have the most up to date lookahead.	Completed
2	Dufferin Construction to investigate if bobcat sweeper can be used to clean the sidewalks near access roads (especially at Queen bridge).	Dufferin Construction has confirmed that a bobcat sweeper can be used to clean the sidewalks near the access roads, but hand tools are usually a better solution.	Completed
3	Metrolinx to schedule a separate meeting with LSE CAC to review the formatting of the weekly overnight work update.	Metrolinx met with the LSE CAC on April 23 to walk through the formatting of the overnight work update and the construction notice has been adjusted.	Completed
4	Metrolinx will email Riverside BIA written confirmation that no construction work will take place during the June 8th Street festival.	Metrolinx has provided Riverside BIA with written confirmation that no construction work will take place during the June 8th Street Festival	Completed
5	Metrolinx will adjust the retaining wall graphic at Logan bridge to show the height of the retaining wall and noise barrier separately.	The Logan Ave bridge graphic was adjusted to show the height of the retaining wall and the noise barrier separately. The presentation was re-circulated and posted online with the new graphic.	Completed

April CLC Action Items - Completed

#	Action	Response	Status
6	Dufferin Construction to send reminders to subcontractors and site team not to route equipment on Colgate or Booth Ave.	Dufferin Construction has sent a reminder to crews not to route equipment on Booth Ave and Colgate Ave.	Completed
7	Metrolinx and Dufferin Construction will discuss shifting the retaining wall work schedule to Monday- Thursday.	Metrolinx and Dufferin Construction discussed the request to shift the retaining wall overnight schedule from Sunday-Thursday to Monday-Thursday and the request is not feasible. The requested change in the schedule would drastically impact the project timeline and the upcoming sequencing of activities. The delay of one (1) day a week for six (6) months of work, would have significant impacts to the overall project timeline and the work activities that can only commence when the retaining walls are completed. Formal response has been provided to both the LSE CAC and the Riverside BIA.	Completed

March/April CLC Action Items - Pending

#	Action	Response	Status
1	Metrolinx to confirm if First Avenue Noise walls will be installed.	A noise barrier will be installed around the laydown area at the end of First Avenue. Metrolinx is working with the Contractor to determine the timeline for the installation of the barrier.	Pending
2	Metrolinx to provide an update on Jimmie Simpson Park banner.	Metrolinx is awaiting approval from the City of Toronto to move forward with the banner at Jimmie Simpson Playground.	Pending
3	Metrolinx to number all items in all charts.	Moving forward, Metrolinx will ensure all items on charts are numbered.	Pending
4	Metrolinx and the BIA to coordinate a walkabout to discuss BIA assets at Queen St. E. bridge.	Metrolinx is waiting for the City BIA office to confirm next steps for the BIA asset walk. Once next steps are confirmed, Metrolinx will coordinate the meeting with the Contractor, Riverside BIA and the City. Update: Date being arranged with BIA and Metrolinx.	Pending
5	Metrolinx to confirm if the BIA mural can be stored at the Thackeray yard.	Metrolinx is investigating hoarding plans for the north side of the rail corridor to confirm if there is a feasible location to install the BIA mural. Metrolinx will continue to keep the Riverside BIA informed on possible options.	Pending

March/ April CLC Action Items - Pending

#	Action	Response	Status
6	Metrolinx to hold an in-person meeting on bike safety at the Community Office.	Metrolinx has met with bike safety representatives from the community and has determined the meeting will be a greater benefit if it was a walking tour. Metrolinx is working on having this meeting set up in June and will keep bike advocacy groups and the local BIAs updated.	Pending
7	Metrolinx to coordinate with IO to determine presence at future meetings.	Metrolinx is continuing to have ongoing conversations with IO.	Pending
8	Metrolinx to provide an update on the tree removals planned for the north side of the rail corridor. Specifically, residents want clarity on what trees are being removed and how many.	Metrolinx is expecting to receive the updated arborist report for the north side of the corridor at the end of May and will aim to provide a summary to the membership at the June CLC meeting.	Pending

Complaints and Issues Tracker

#	Complaint / Issue	Resolution
1	<p>Noise</p> <ul style="list-style-type: none"> Paisley Ave near Booth Ave Apr 12, 2024 	<ul style="list-style-type: none"> Complaint received about noise from hydro truck. Action: Truck was being used to empty water from the rail corridor. Weather conditions limited where work could be done. The Contractor has confirmed that remaining work now being completed from within the corridor.
2	<p>Road access</p> <ul style="list-style-type: none"> Booth Ave Apr 15, 2024 	<ul style="list-style-type: none"> Complaint received about machinery driving down street. Action: The Contractor is ensuring no machinery is using Booth Ave and is using alternate routes.
3	<p>Parking</p> <ul style="list-style-type: none"> De Grassi St. near Queen Apr 15, 2024 	<ul style="list-style-type: none"> Complaint received about traffic pylons blocking parking spots. Action: The Contractor moved the pylons to make the parking spots accessible again.
4	<p>Noise</p> <ul style="list-style-type: none"> Queen St. Bridge Apr 15, 2024 	<ul style="list-style-type: none"> Complaint received about noise in the morning. Action: The Contractor reviewed the noise monitors in the area. While the monitor closer to the resident did not detect any exceedances, the monitor within the corridor and closer to the works did detect some exceedances. Crews were already working on installing additional noise barriers and replacing back-up alarms as a response.
5	<p>Vibration</p> <ul style="list-style-type: none"> Logan Ave. near First Ave. Apr 18, 2024 	<ul style="list-style-type: none"> Complaints received about vibrations during the day. Action: The Contractor reviewed the nearest vibration monitors in the area and confirmed that no vibration warnings or exceedances were recorded at the unit. The Contractor also confirmed that the property of the resident is outside the zone where vibration from activities at the time can be felt.
6	<p>Noise</p> <ul style="list-style-type: none"> Booth Ave near Paisley Ave April 19, 2024 	<ul style="list-style-type: none"> Complaint received about noise from hydro truck. Action: Truck was being used to empty water from the rail corridor. Weather conditions limited where work could be done. The Contractor has confirmed that remaining work now being completed from within the corridor.
7	<p>Noise</p> <ul style="list-style-type: none"> Queen St. Bridge April 19, 2024 	<ul style="list-style-type: none"> Complaint received about noise during the day. Action: The Contractor reviewed the noise monitors in the area. While the monitor closer to the resident did not detect any exceedances, the monitor within the corridor and closer to the works did detect some exceedances. Crews implemented additional mitigations such as noise barriers immediately.
8	<p>Noise</p> <ul style="list-style-type: none"> Dundas St. Bridge Apr 26, 2024 	<ul style="list-style-type: none"> Complaint received about machinery being unloaded in the morning causing noise. Action: The Contractor reviewed multiple noise and vibration monitors in the area and confirmed that there were no exceedances. The Contractor will attempt to unload machinery later in the day moving forward.

Complaints and Issues Tracker

#	Complaint / Issue	Resolution
9	Parking <ul style="list-style-type: none"> De Grassi St. near Queen Apr 26, 2024 	<ul style="list-style-type: none"> Complaint received about fencing blocking parking spots after work completed. Action: The Contractor removed the fencing to make parking spots available again.
10	Idling truck <ul style="list-style-type: none"> Queen St. E. Apr 29, 2024 	<ul style="list-style-type: none"> Complaint received about idling truck on Queen St. E. Action: The Contractor reminded crew to be mindful of neighbours and avoid idling vehicles.
11	Access <ul style="list-style-type: none"> Booth/ Paisley Ave May 1, 2024 	<ul style="list-style-type: none"> Complaint received about crews parking their cars on Paisley Ave. Action: The Contractor confirmed crews will not be parking on Paisley Ave.
12	Access <ul style="list-style-type: none"> First Ave May 3, 2024 	<ul style="list-style-type: none"> Complaint received about contractor using First Ave to access the laydown area. Action: The Contractor will make sure that all crews are accessing staging area via laneway off Gerrard St. E.
13	Road Cleaning <ul style="list-style-type: none"> Dundas St E. May 3, 2024 	<ul style="list-style-type: none"> Complaint received about the road conditions at Dundas St E (dirty road). Action: Contractor confirmed sweep cleaning is completed daily and the rocks at the access roads are used to take mud off the truck tires. Contractor investigating further road cleaning measures.
14	Noise (two complaints) <ul style="list-style-type: none"> First Ave May 4, 2024 	<ul style="list-style-type: none"> Complaints received about overnight noise. Action: Metrolinx provided in-house noise mitigations and further details about the work. Noise was related to critical activities that needed to be complete during the major track closure.
16	Vibration <ul style="list-style-type: none"> Galt Ave May 4, 2024 	<ul style="list-style-type: none"> Complaint received about vibration overnight. Action: The Contractor reviewed vibrations monitors in the area and confirmed that no exceedances were observed.

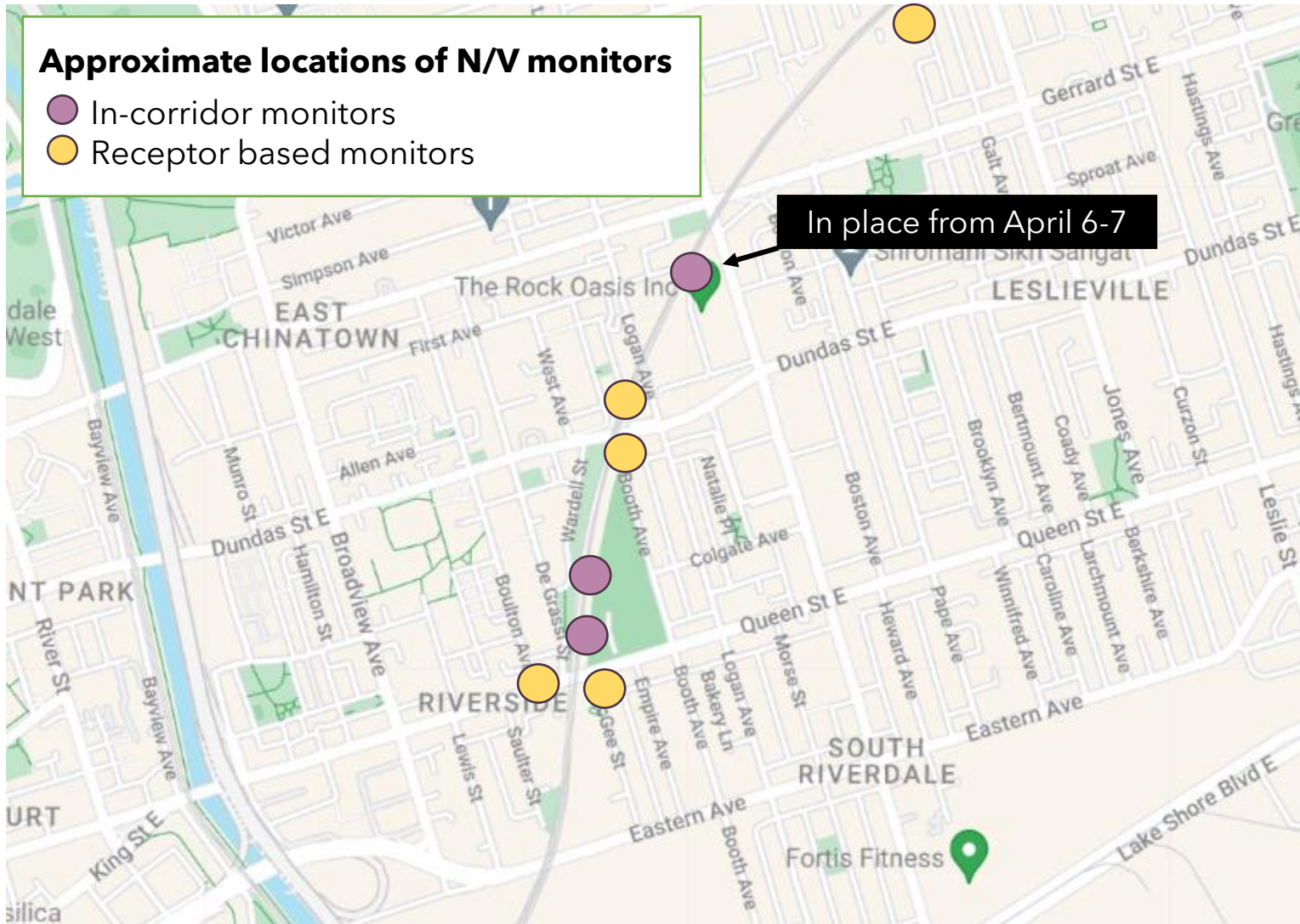
Complaints and Issues Tracker

#	Complaint / Issue	Resolution
17	Vibration <ul style="list-style-type: none"> Riverdale Ave May 5, 2024 	<ul style="list-style-type: none"> Complaint received about vibration overnight. Action: The Contractor reviewed vibrations monitors in the area and confirmed that no exceedances were observed. The Contractor also confirmed the property was outside the zone of influence.
18	Vibration <ul style="list-style-type: none"> Poucher St May 5, 2024 	<ul style="list-style-type: none"> Complaint received about vibration overnight. Action: The Contractor reviewed vibrations monitors in the area and confirmed that no exceedances were observed. The Contractor also confirmed the property was outside the zone of influence.
19	General construction complaints <ul style="list-style-type: none"> Dundas St E/Logan Ave May 9, 2024 	<ul style="list-style-type: none"> Complaint received about construction impacts including noise, vibration, dust/dirt, and property concerns Action: Metrolinx and the Contractor will be taking the following actions: <ul style="list-style-type: none"> Extending construction fencing Installing higher barriers (wood hoarding) along the back of the properties Additional cleaning/maintenance around work zones and site access points
20	Signage <ul style="list-style-type: none"> Queen St E bridge May 15, 2024 	<ul style="list-style-type: none"> Complaint came in about sidewalk closure signage around the Queen St E bridge, requesting for more signage to be installed. Action: The Contractor reviewed the signage around the Queen St E bridge and confirmed that there are multiple signs posted and flag personnel in place to help pedestrians navigate the site. However, they've seen many pedestrians continue to walk around the fast fence panels, signs, and pylons in place. No additional signage will be installed.

Noise and Vibration Update

April 2024

Noise and Vibration Monitoring Update - April 2024



- There are two noise and vibration monitoring instruments located within the rail corridor, and five monitors located at adjacent residential receptors
- A noise and vibration monitor was installed within the rail corridor at First Ave. during the track closure from April 6-7
- Two noise complaints coincided with exceedances received on April 6 and April 15 regarding noise at the Queen bridge
- No vibration exceedances were detected at receptor-based monitors during the month of April
- Noise limits are measured at the property boundary
- In-corridor monitors are used to detect the highest construction related noise sources - based on this data Metrolinx deploys mitigation measures where practical

• The summary above provides information on noise levels measured over 15-minute intervals (15-minute average).

Registered Exceedances at Noise Receptor Locations: April 2024

#	Date/Time of Exceedances	Detail	Location	Source	Corrective action
1	April 6 - Daytime and nighttime	Noise	Nighttime: Near the construction site at Queen bridge and Dundas bridges, and Galt Ave. Morning/Daytime: Near the construction site at Queen bridge, Dundas, and Logan bridges, and Galt Ave.	<ul style="list-style-type: none"> Handheld drill Chainsaws Hydro-vacuum truck 	<ul style="list-style-type: none"> Relocated drilling and chainsaw activities away from receptor Adjusted location of noise barriers and coverings Hydro-vac activity related to site safety issue that required immediate resolution -activity could not be stopped
2	April 7 - Daytime and nighttime	Noise	Nighttime: Near the construction site at Dundas and Logan bridges. Morning/Daytime: Near the construction site at Queen bridge, Dundas, and Logan bridges, and Galt Ave.	<ul style="list-style-type: none"> Handheld drill Chainsaws 	<ul style="list-style-type: none"> Relocated drilling and chainsaw activities away from receptor Adjusted location of noise barriers and coverings
3	April 8 - Nighttime	Noise	Near the construction site at Dundas and Logan bridges.	<ul style="list-style-type: none"> Chainsaws 	<ul style="list-style-type: none"> Relocated drilling and chainsaw activities away from receptor Exploring options to use electric chainsaws rather than gas powered chainsaws
4	April 13 - Early morning and daytime	Noise	Near the construction site at Queen, Logan, and Dundas bridges	<ul style="list-style-type: none"> Hand drill Sandblasting machine Machine idling 	<ul style="list-style-type: none"> Start work after 9 a.m. on weekends Limit machine idling near residential receptors Add noise barriers around equipment
5	April 18 - Daytime	Noise	Near the construction site at Dundas bridge	<ul style="list-style-type: none"> Compressor 	<ul style="list-style-type: none"> Moved activity to enclosed area

Registered Exceedances at Noise Receptor Locations: April 2024

#	Date/Time of Exceedances	Detail	Location	Source	Corrective action
6	April 19 - Daytime	Noise	Near construction site at Dundas bridge	• Hydro-vac truck	• No action taken - exceedance was minor and hydro-vac truck could not be moved due to the location of the utility
7	April 20 - Nighttime	Noise	Near construction site at Logan Ave bridge	• Excavator	• Moved equipment away from receptor
8	April 23 - Nighttime	Noise	Near construction site at Galt Ave.	• Drill rig	• Adjust noise barrier around equipment
9	April 27 - Early morning	Noise	Near construction site at Dundas bridge	• Handheld drill	• Schedule activity after 9 a.m. on weekends
10	April 29 - Daytime	Noise	Near construction site at Dundas bridge	• Compressor	• Held toolbox talk with crew about use of compressor

- The above table provides information on noise levels measured over 15-minute intervals (15-minute average).
- Exceedances unrelated to Lakeshore East Joint Corridor construction are not reflected in this table.

Registered Exceedances at In-Corridor Noise Receptor Locations: April 2024

#	Date/Time of Exceedances	Detail	Location	Source	Corrective action
1	April 5 - Nighttime	Noise	Within construction site near Queen St. E. bridge	• Chainsaw	• Exceedances were investigated and it was determined that there were no exceedances at adjacent residential receptors
2	April 6 - Daytime and nighttime	Noise	Within construction site near Queen St. E. bridge.	• Chainsaw	<ul style="list-style-type: none"> • Relocated drilling and chainsaw activities away from receptor • Adjusted location of noise barriers and coverings • Hydro-vac activity related to site safety issue that required immediate resolution –activity could not be stopped
3	April 7 - Daytime and nighttime	Noise	Within construction site near Queen St. E. bridge	• Chainsaw	<ul style="list-style-type: none"> • Relocated drilling and chainsaw activities away from receptor • Adjusted location of noise barriers and coverings
4	April 8 - Nighttime	Vibration	Within construction site near Queen St. E. bridge	• Chainsaw	<ul style="list-style-type: none"> • Relocated drilling and chainsaw activities away from receptor • Exploring options to use electric chainsaws rather than gas powered chainsaws
5	April 11 - Daytime	Noise	Within construction site near Queen St. E. bridge	• Excavator breaking concrete	• Checked closest residential receptor and confirmed no exceedances
6	April 12 - Daytime	Noise	Within construction site near Queen St. E. bridge	• Excavator breaking concrete	• Checked closest residential receptor and confirmed no exceedances

- The above table provides information on noise levels measured over 15-minute intervals (15-minute average).
- Exceedances unrelated to Lakeshore East Joint Corridor construction are not reflected in this table.

Registered Exceedances at In-Corridor Noise Receptor Locations: April 2024

#	Date/Time of Exceedances	Detail	Location	Source	Corrective action
7	April 13 - Early morning	Noise	Within construction site near Queen St. E. bridge	• Tonal backup beeper	• Ensure subcontractor equipment has broadband backup alarms
8	April 14 - Early morning	Noise	Within construction site near Queen St. E. bridge.	• Machine idling	• Reduce machine idling at construction access points
9	April 15 - Daytime	Noise	Within construction site near Queen St. E. bridge	• Excavator breaking concrete	• Checked closest residential receptor and confirmed no exceedances
10	April 16 - Daytime	Noise and vibration	Within construction site near Queen St. E. bridge	• Cleaning soil off retaining wall	• Exceedance due to proximity of activity to sensor - no action required
11	April 18 - Daytime	Noise	Within construction site near Queen St. E. bridge	• Tieback machine	• Checked closest residential receptor and confirmed no exceedances
12	April 19 - Daytime	Noise	Within construction site near Queen St. E. bridge	• Tieback machine	• Checked closest residential receptor and confirmed no exceedances
13	April 23 - Daytime	Noise and vibration	Within the construction site near Queen St. E. bridge	• Excavator and dump truck	• Exceedance due to proximity of equipment to sensor - no action required

- The above table provides information on noise levels measured over 15-minute intervals (15-minute average).
- Exceedances unrelated to Lakeshore East Joint Corridor construction are not reflected in this table.

Noise Mitigations Implemented in April 2024

Electric Chainsaws



Noise barrier at Galt Ave.



Ontario Line Construction Update Lakeshore East Joint Corridor Early Works Construction



**Bridge reconstruction:
Queen St. E., Dundas St. E.,
and Logan Ave.**

Bridge Abutment Demolition

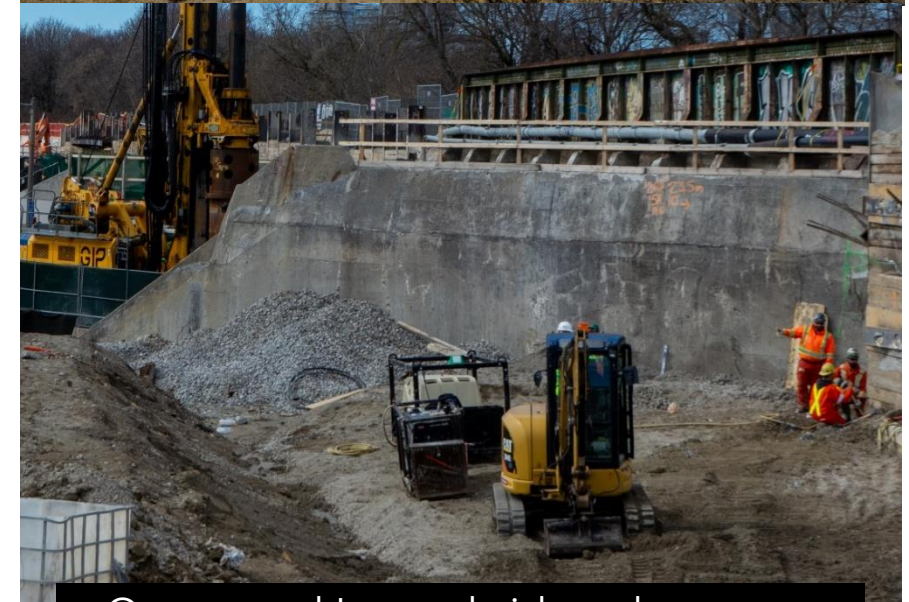
- Bridge abutments (the sides of the bridges) will be demolished and removed.
- Broken concrete will be loaded into dump trucks and hauled off site for disposal.
- The Queen Street, Dundas Street, and Logan Avenue bridges will all have their abutments and piers demolished.
- After demolition work is completed, the new bridge abutments will be built.
- Periodic traffic lane and sidewalk closures will be required; no road closures are expected.

Start dates and duration:

- **Queen bridge:** Ongoing for approximately one week.
- **Dundas bridge:** As early as Monday, May 13, for approximately three weeks.
- **Logan Bridge:** As early as Monday, May 27, for approximately three weeks.

Hours of work:

Demolition work will take place periodically Monday - Friday, between 5 a.m. - 7 p.m. (demolition activities will be restricted before 7 a.m.). Periodically on Saturdays from 7 a.m. - 5 p.m.



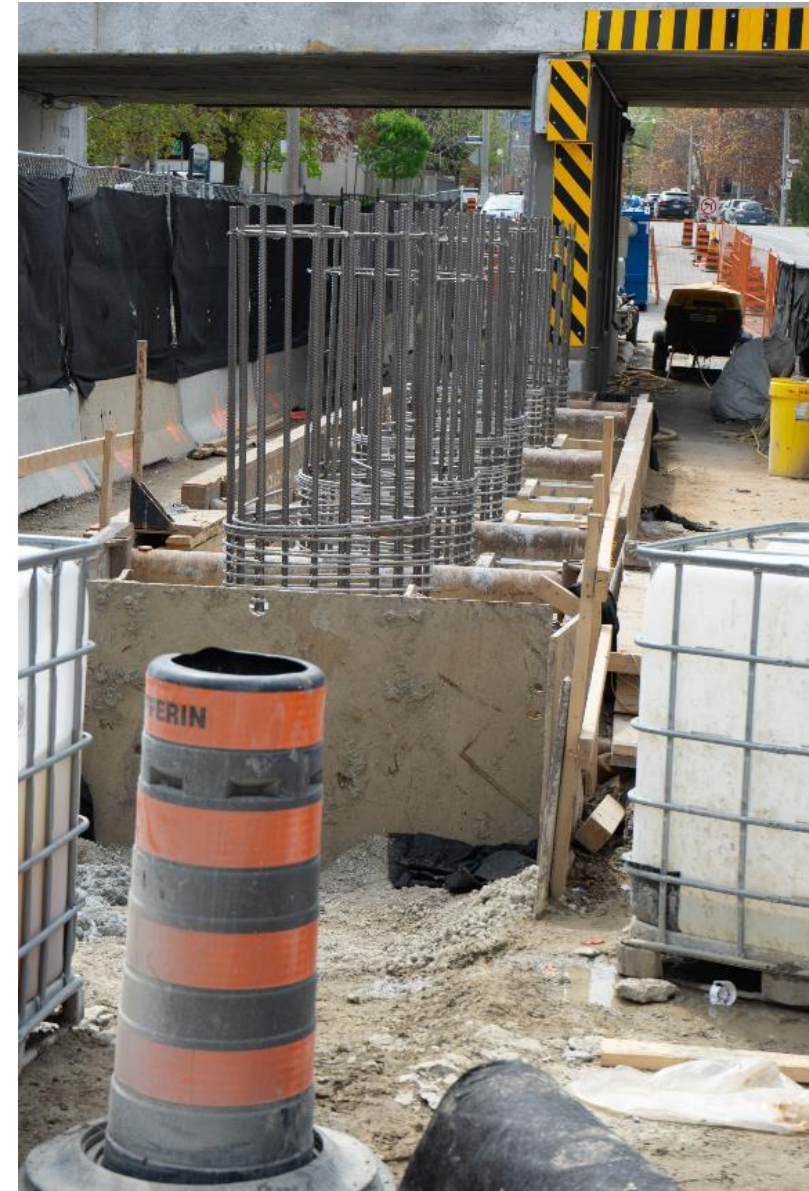
Queen and Logan bridge abutments from the inside

Bridge Pier Construction

- New bridge piers are currently being constructed at Dundas St. E. and Logan Ave.
- Drill rigs are being used to dig holes into the ground which are then filled with rebar and concrete to support the pier footings
- New piers will then be built out of steel and concrete
- Construction activities include excavation, rebar installation, concrete works, and hauling.

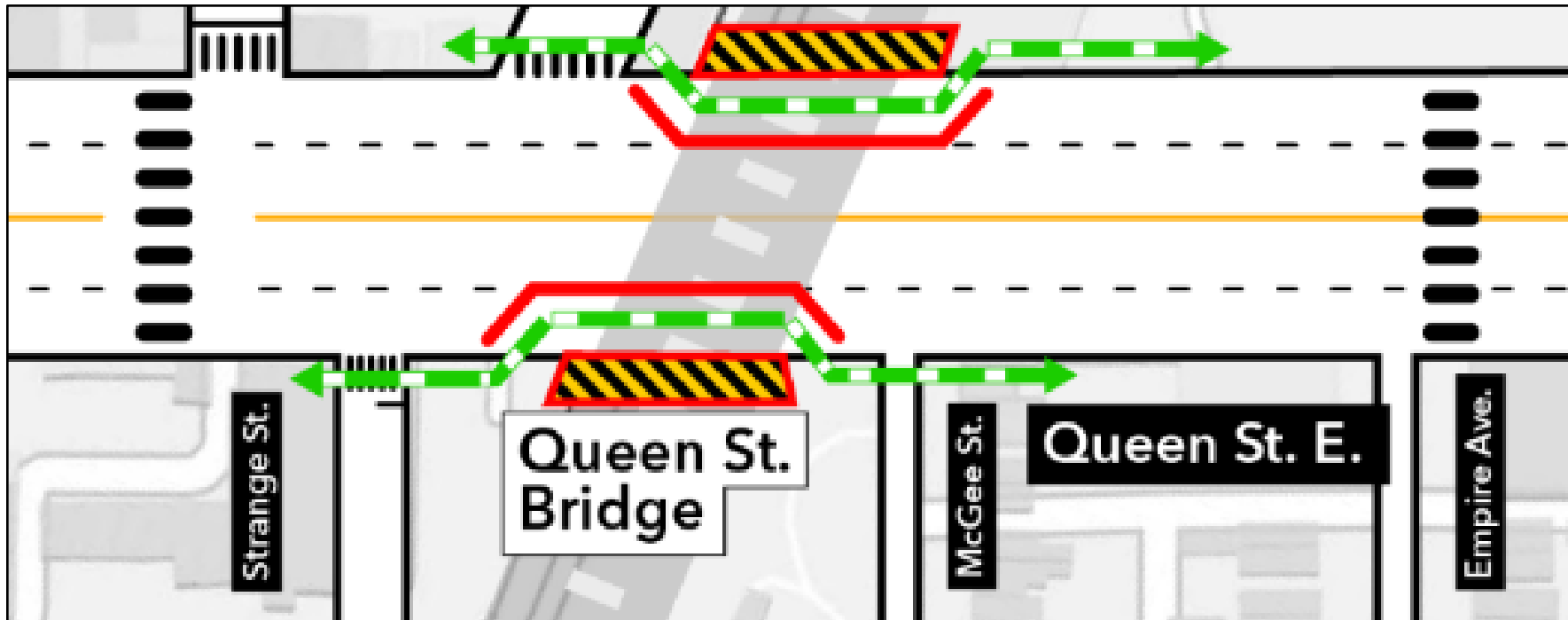
Hours of work:

- **Dundas Bridge:** Until June 2024
- **Logan Bridge:** Until July 2024
- Monday – Friday between 7 a.m. – 7 p.m. (up until 10 p.m. as required); periodically on Saturdays from 7 a.m. – 5 p.m.



Rebar and forms for new piers at Dundas St. E.

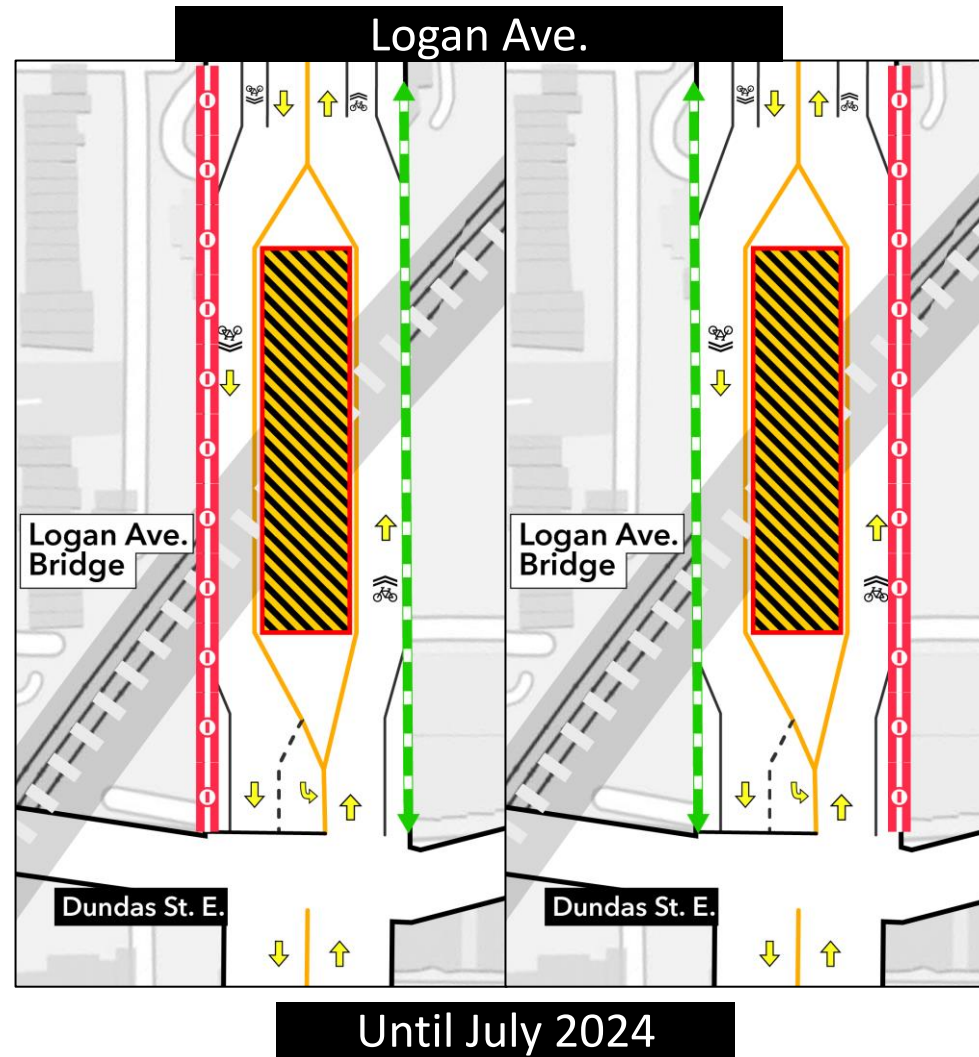
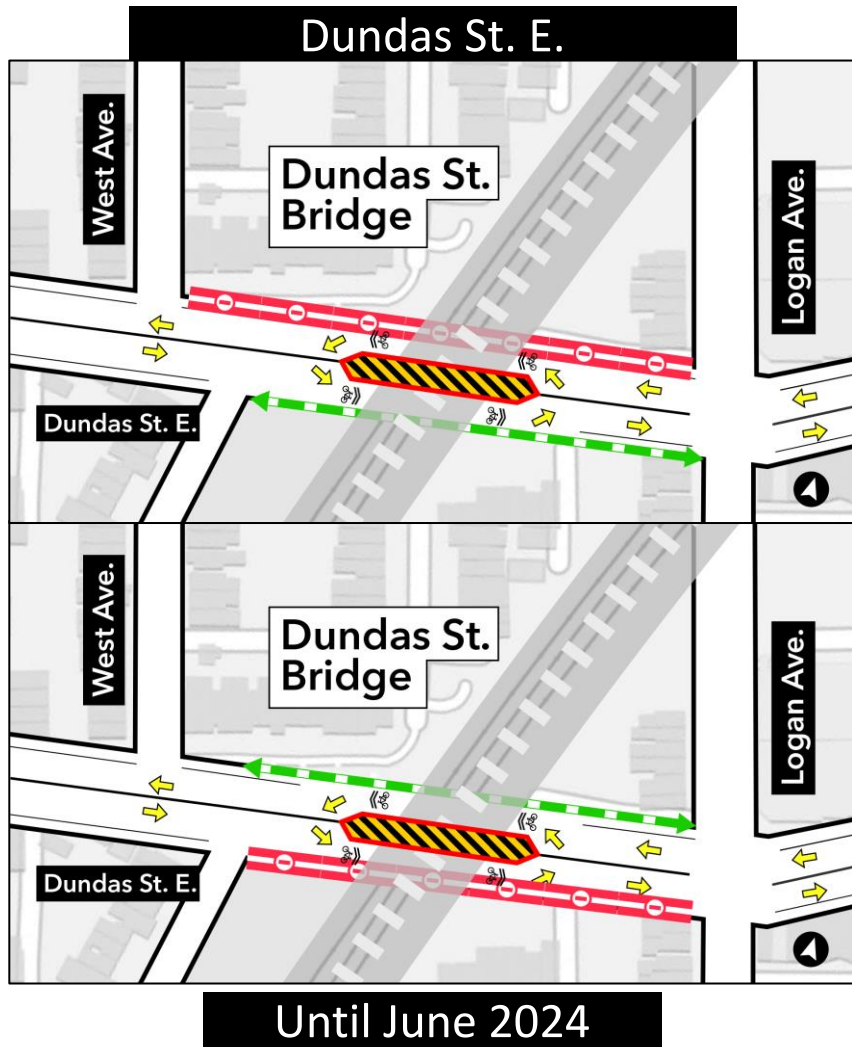
Traffic Configuration: Queen Street East Bridge Works



-  Existing rail corridor
-  Work area
-  Sidewalk closure
-  Pedestrian access
-  Temporary concrete barrier

Sidewalk detours will remain in place until September 2024 for abutment construction works

Traffic Configuration: Logan and Dundas Bridges Demolition Works



- Existing rail corridor
- Work area
- Sidewalk closure
- Lane direction
- Pedestrian access
- Shared bike lane

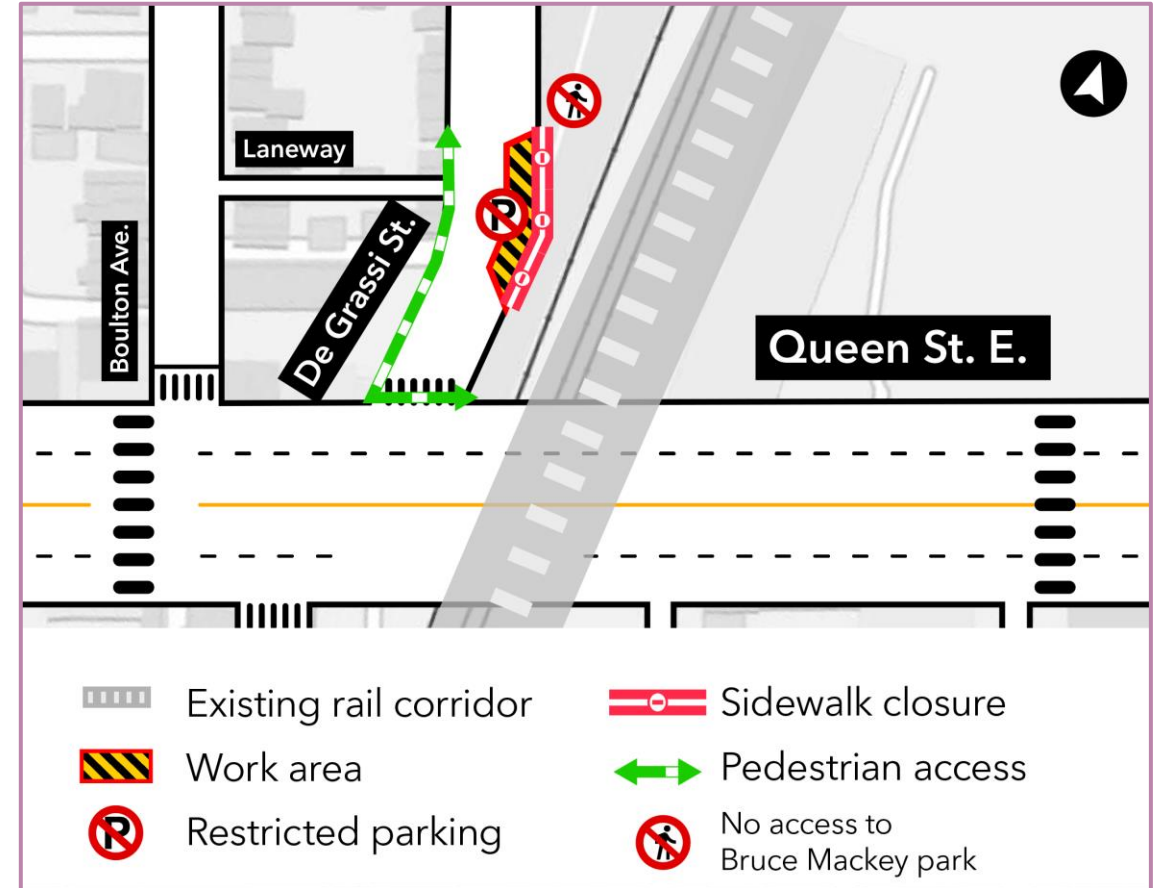


Sewer works on De Grassi Street

- A new combined sewer will be installed on De Grassi Street north of Queen Street East
- This new sewer line is required to make space for the future Riverside-Leslieville subway station
- Temporary parking and sidewalk closure will be required to safely perform the work.
- Entry into Bruce Mackey park will be restricted from the south side during certain stages of the work; the north entrance into the park will remain open.

Start dates and hours of work:

- **Sewer installation:** Starting as early as Monday, May 27, 2024, for approximately two (2) weeks
- **Hours:** Monday - Friday, between 7 a.m. - 7 p.m.

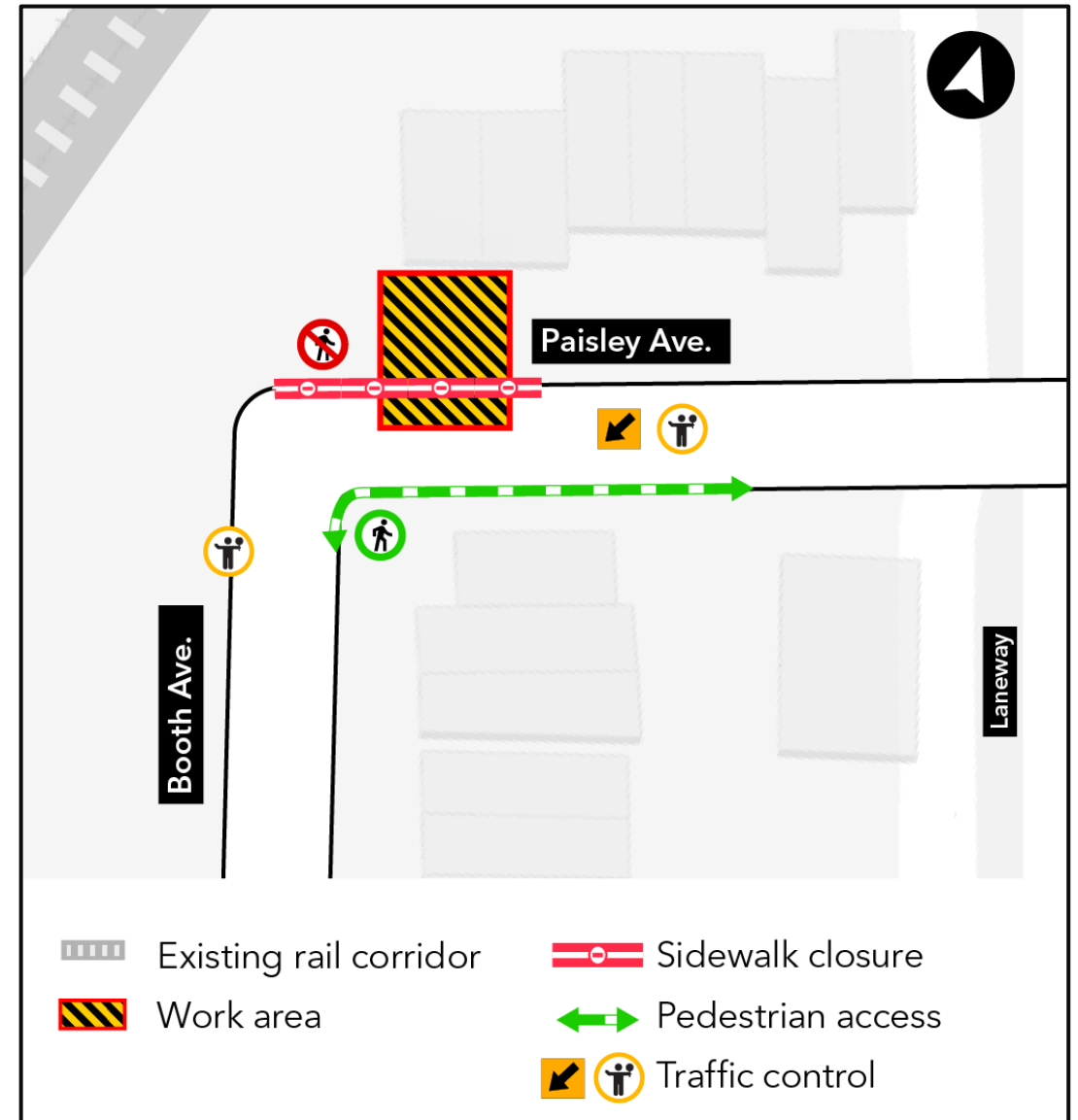


Dewatering work at 2 Paisley Ave.

- A dewatering pipe will be connected to the existing manhole at 2 Paisley Avenue, near Booth Avenue.
- The dewatering pipe will remove groundwater from the construction site, ensuring the ground is safe and stable.
- Temporary traffic lane and sidewalk closures will be required to safely perform the work (refer to map).
- Access to private property will be maintained.

Start date and hours of work:

- Starting as early as Friday, May 17, 2024, for approximately one (1) day.
- **Hours:** Monday - Friday, between 7 a.m. - 5 p.m.





Construction Update: In-Corridor Work

In-Corridor Work Update

#	Activity	Description	Location	Date and times
1	Excavation and Structural Support Work	<ul style="list-style-type: none"> Support structures (piles and shoring walls) are being installed throughout the corridor to enable bridge reconstruction and retaining wall and noise barrier installations. Construction activities include excavation, drilling and concrete works. 	<ul style="list-style-type: none"> Throughout the rail corridor between Eastern Ave. and Carlaw Ave. At Queen St. E., Dundas St. E. and Logan Ave. bridge 	<ul style="list-style-type: none"> Ongoing until June 2024 Daytime: Monday - Friday from 7 a.m. to 7 p.m. Overnight: Sunday - Thursday from 8 p.m. to 5 a.m.
2	Utility Installations	Excavation inside the rail corridor to install an enclosed conduit (raceway) that will protect utilities from external conditions.	<p>Within the rail corridor between Thackeray St. and Jones Ave.</p> <ul style="list-style-type: none"> ✓ Utility installations on the south side of the corridor were completed between Jones - Pape Aves. Crews have shifted to the north side of the corridor and will resume on the south side of the corridor in late June 2024 	<ul style="list-style-type: none"> Utility installations on the north side of the corridor will continue periodically until Sept 2024 Overnight: Monday - Friday from 8 p.m. to 5 a.m.
3	Fence and noise barrier installation	New fencing and noise barriers will be installed. The pathway at Galt Laneway to Gerrard Square will be closed to accommodate this work.	On the east side of the rail corridor from Gerrard St. E. and Jones Ave.	<ul style="list-style-type: none"> Ongoing for approximately five months Daytime: Monday - Friday from 7 a.m. to 7 p.m.
4	Retaining Wall (T-Wall) Construction	Installation of pre-cast concrete block retaining walls	On the east side of the rail corridor from Eastern Ave. - Thackery St.	<ul style="list-style-type: none"> As early as Tuesday, May 21 for approximately six (6) months. <u>Overnight work expected to start mid-June.</u> Daytime: Monday - Saturday from 7 a.m. to 7 p.m. Overnight: Sunday - Thursday from 8 p.m. to 5 a.m.

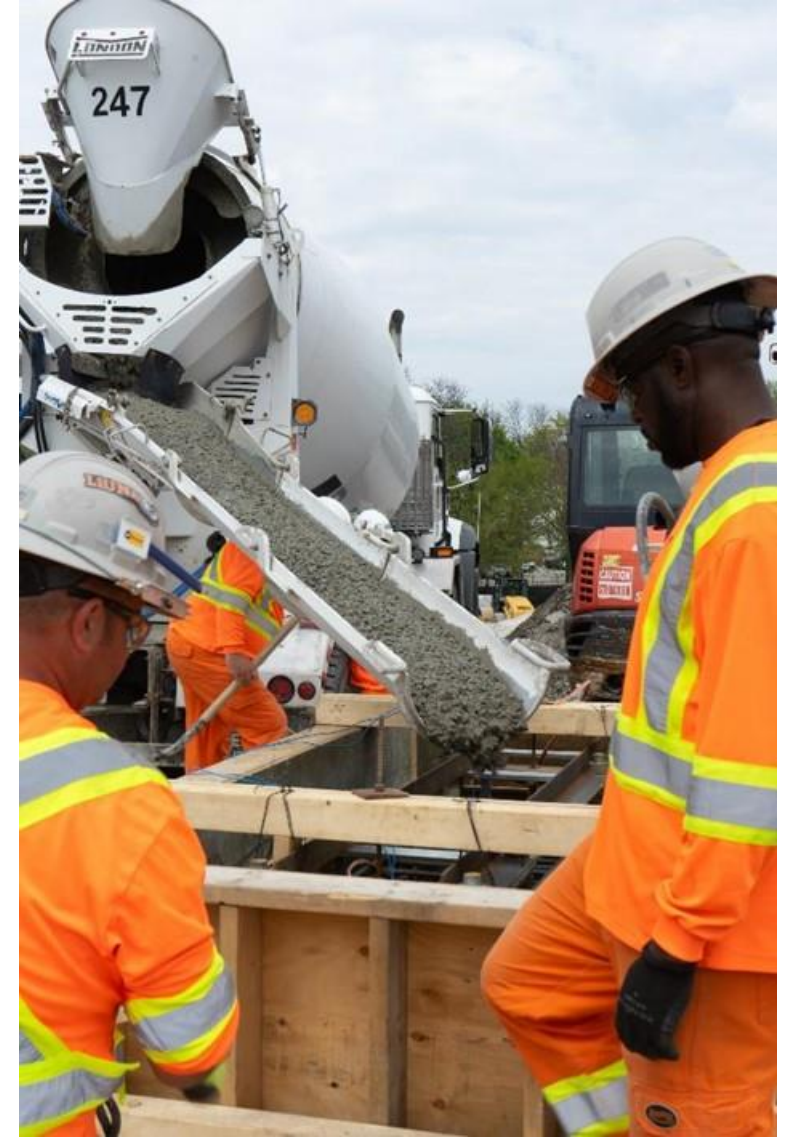
In-Corridor Work Progress - Signal Bridge Work



Inspecting the concrete before the big pour



A concrete vibrator is inserted during the pour to liquify it and help it settle evenly



This will be one of the footings of the new signal bridge.

Retaining Wall Construction

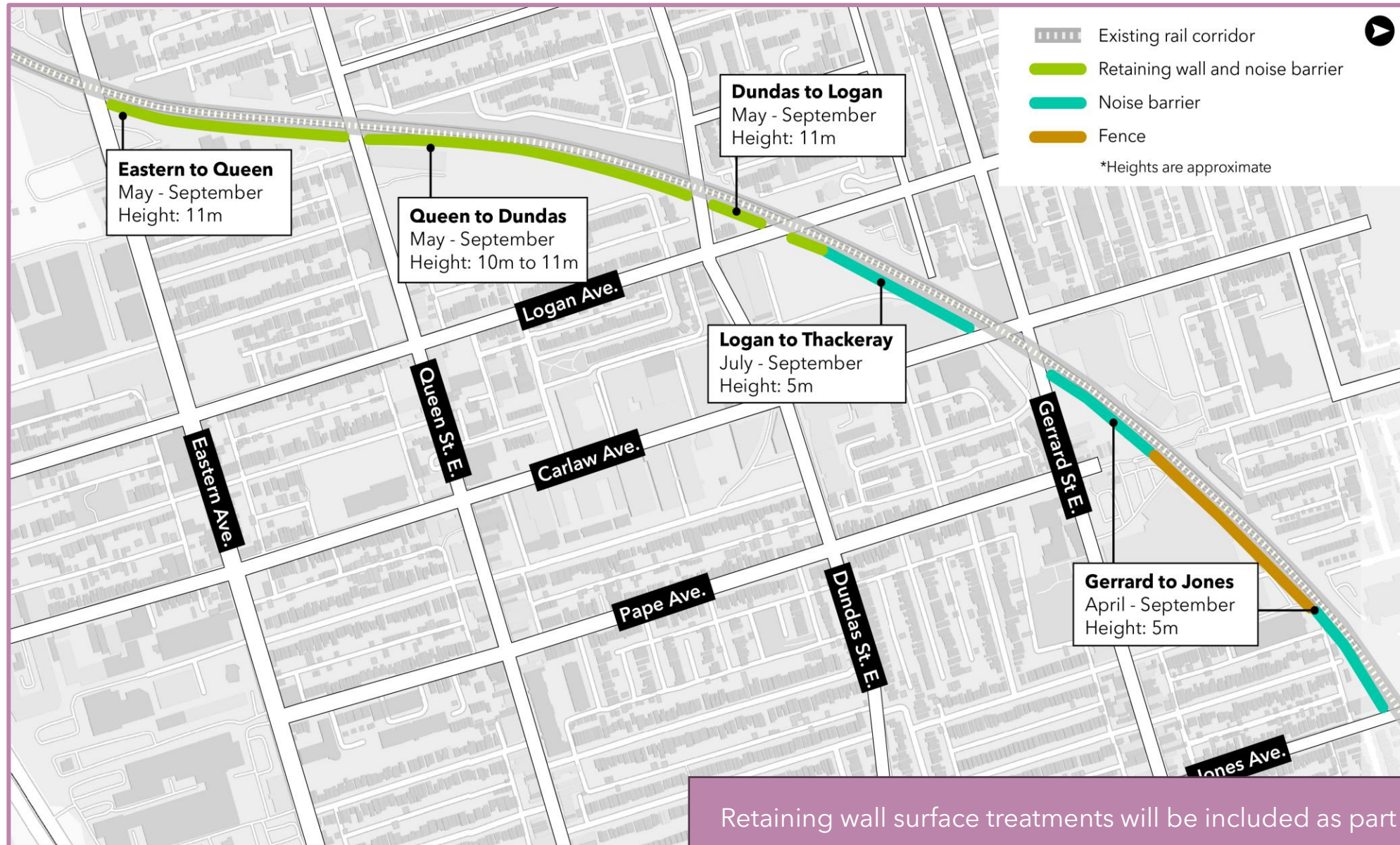
- As early as Tuesday May 21, crews will begin retaining wall construction between Eastern Ave. - Dundas St. E.
- This work will take place for approx. six months during the day and night to accelerate construction and project completion - overnight retaining wall work will not start until June 2024
- Less disruptive work will be scheduled during the overnight period and noise mitigation measures will be implemented throughout the work to reduce disruption
- Work will take place periodically along each section of the corridor; overnight work will not take place in the same area every night

Work will include:

- Building the foundation for the walls by pouring concrete and laying granular material
- Installing pre-cast concrete blocks (T-walls)
- Backfilling and compacting around retaining walls

Activity	Working Hours
Material deliveries, concrete works, material placement, grading, backfilling and compaction	Daytime: Monday - Saturday from 7 a.m. - 7 p.m.
Placement of pre-cast concrete blocks, installing formwork, site preparation and maintenance work	Overnight: Sunday - Thursday from 8 p.m. - 5 a.m. <i>*Expected to start in mid-June</i>

Retaining Wall Construction Update



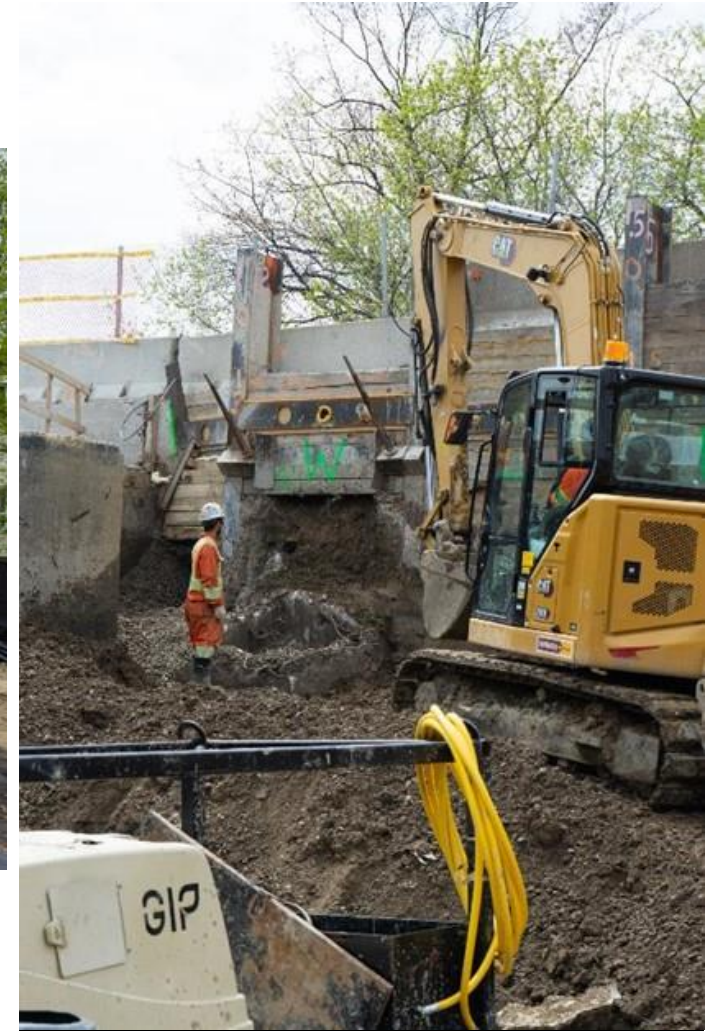
In-Corridor Work Progress - Retaining wall and noise barrier installation



Pre-cast concrete blocks being installed by the LCBO.



Steel piles installed by Galt Ave. These will support noise barriers.



Lagging and excavation work continues near the Dundas Bridge.

2024 Lookahead

Q2 2024 (April- June)	Q3 2024 (July - September)	Q4 2024 (October- December)
<p>Activity: Excavation and support works in the rail corridor and at the Queen St. E., Logan Ave., and Dundas St. E. bridges</p> <p>Hours:</p> <ul style="list-style-type: none"> • Daytime: Monday - Friday from 7 a.m. to 7 p.m. • Overnight: Sunday - Thursday from 8 p.m. to 5 a.m. 	<p>Activity: Continue installation of retaining walls and noise barriers from Eastern Ave. - Jones Ave</p> <ul style="list-style-type: none"> • Daytime: Monday - Saturday from 7 a.m. to 7 p.m. • Overnight: Sunday - Thursday from 8 p.m. to 5 a.m. 	<p>Activity: Rail closures for installation and commissioning of new tracks</p> <p>Hours:</p> <ul style="list-style-type: none"> • Two weekends between October and November 2024 (exact dates to be determined); 24-hour work
<p>Activity: Utility installations between Gerrard St. E. and Jones Ave.</p> <p>Hours:</p> <ul style="list-style-type: none"> • Overnight: Monday - Friday from 8 p.m. to 5 a.m. 	<p>Activity: Continue construction of new bridge abutments at Queen St. E., Logan Ave., and Dundas St. E.</p> <p>Hours: Exact days and work hours to be determined</p>	<p>Activity: Continue construction of the new bridges on the east side of the rail corridor</p> <p>Hours: Exact days and work hours to be determined</p>
<p>Activity: Bridge abutment demolition and pier construction at the Queen St. E., Logan Ave., and Dundas St. E. bridges</p> <p>Hours:</p> <ul style="list-style-type: none"> • Daytime: Monday - Friday from 7 a.m. to 7 p.m. and periodically Saturday's from 7 a.m. - 5p.m. • Periodically crews may be required to work until 10 p.m. on weekdays • Overnight: Weekend road closures may be required for abutment demolitions 	<p>Activity: Start preparation work (tree and fence removals) for construction on the west side of the corridor</p> <p>Hours: Daytime (exact days and work hours to be determined)</p>	<p>Activity: Continue preparation work (access roads) for construction on the west side of the corridor</p> <p>Hours: Daytime (exact days and work hours to be determined)</p>
<p>Activity: Installation of retaining walls and noise barriers from Eastern Ave. - Jones Ave.</p> <p>Hours:</p> <ul style="list-style-type: none"> • Daytime: Monday - Saturday from 7 a.m. to 7 p.m. • Overnight: Sunday - Thursday from 8 p.m. to 5 a.m. 		<p>Activity: Logan Ave. watermain relocation</p> <p>Hours: Exact days and work hours to be determined</p>
<p>Activity: Sewer restoration work at Degrassi St. E. and Saulter St., and dewatering installation at 2 Paisley Ave.</p> <p>Hours:</p> <ul style="list-style-type: none"> • Daytime: Monday- Friday from 7 a.m.- 7p.m. 		
<p>Activity: Start construction of new bridge abutments at Queen St. E., Logan Ave., and Dundas St. E.</p> <p>Hours: Exact days and work hours to be determined</p>		<ul style="list-style-type: none"> • Work activities and hours listed are tentative and subject to change



**Eastern Avenue Bridge
East Harbour Transit Hub**

EAST HARBOUR TRANSIT HUB

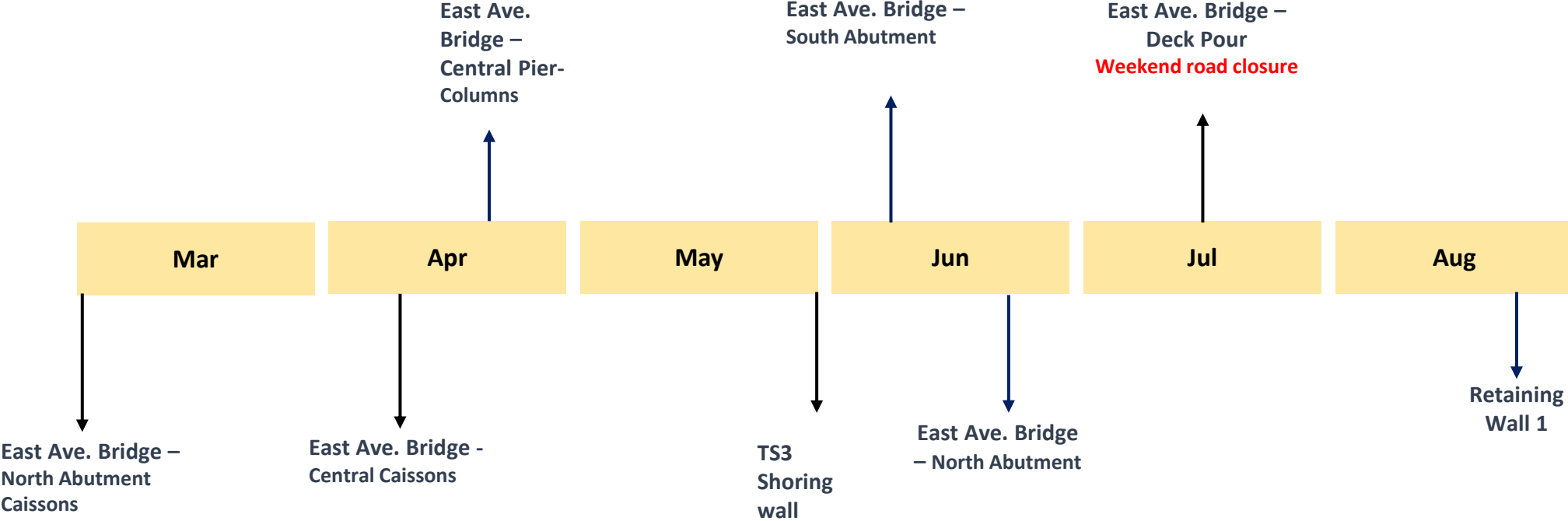
EARLY WORKS AND EASTERN AVENUE BRIDGE WORK

- Early Works may include such things as: establishing the work zone, moving equipment, supplies, and other resources, geo-technical investigations, utility daylighting, and track work.
- Early works are an important component of any construction project. These activities set the groundwork for major construction and reduce the risk of delays to the project downstream.
- Ongoing curb-lane closures on Eastern Avenue are in effect until October 2026*, to create a safe working zone for the crews and vehicle traffic.
- There will be a full road closure on Eastern Avenue over a weekend in July for the bridge deck pour. Dates have not been confirmed yet.

•Dates are subject to change

EAST HARBOUR TRANSIT HUB

UPCOMING CONSTRUCTION ACTIVITIES



Note: Dates are subject to change

What's Next and Wrap Up

Community Engagement

Metrolinx along with construction and project representatives are here for the community throughout the project. Upcoming community engagement activities include:

- Jane's Walk Ontario Line Riverside - May 3
- Community Police Day at Jimmie Simpson Park - May 11
- Riverside Eats & Beats Streetfest- June 8
- Sounds of Leslieville & Riverside- July 5-8

Next CLC: June 20 from 6:00 -7:30 p.m.

Follow us on social media:

X / Facebook / Instagram @ OntarioLine



Community Police Day, May 2024, Jimmie Simpson Park

Contact Us

Metrolinx will keep the community, residents and businesses informed by providing project updates, seeking input and feedback, and addressing questions and concerns effectively and quickly.

Stay connected:

Ontario Line e-newsletter @ [Metrolinx.com/OntarioLine](https://www.metrolinx.com/OntarioLine)

Questions or comments:

OntarioLine@metrolinx.com

24/7 call # 416-202-5100

Follow us on social media:

Twitter / Facebook / Instagram @ OntarioLine



Ontario Line Community Office 770 Queen Street East

Questions and Answers



Appendix

CLC Code of Conduct



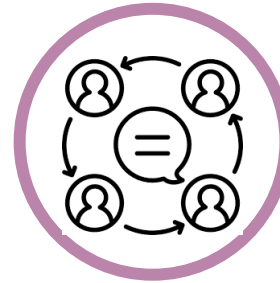
Participate fully, openly, and transparently in discussions, while also creating an environment where all members are encouraged to contribute and share their views.



Participate in a respectful manner towards other CLC members by using appropriate language.



Keep requested agenda and discussion items within the **mandate and scope** of the **Construction Liaison Committee**.



Represent their community's diverse perspectives and interests.

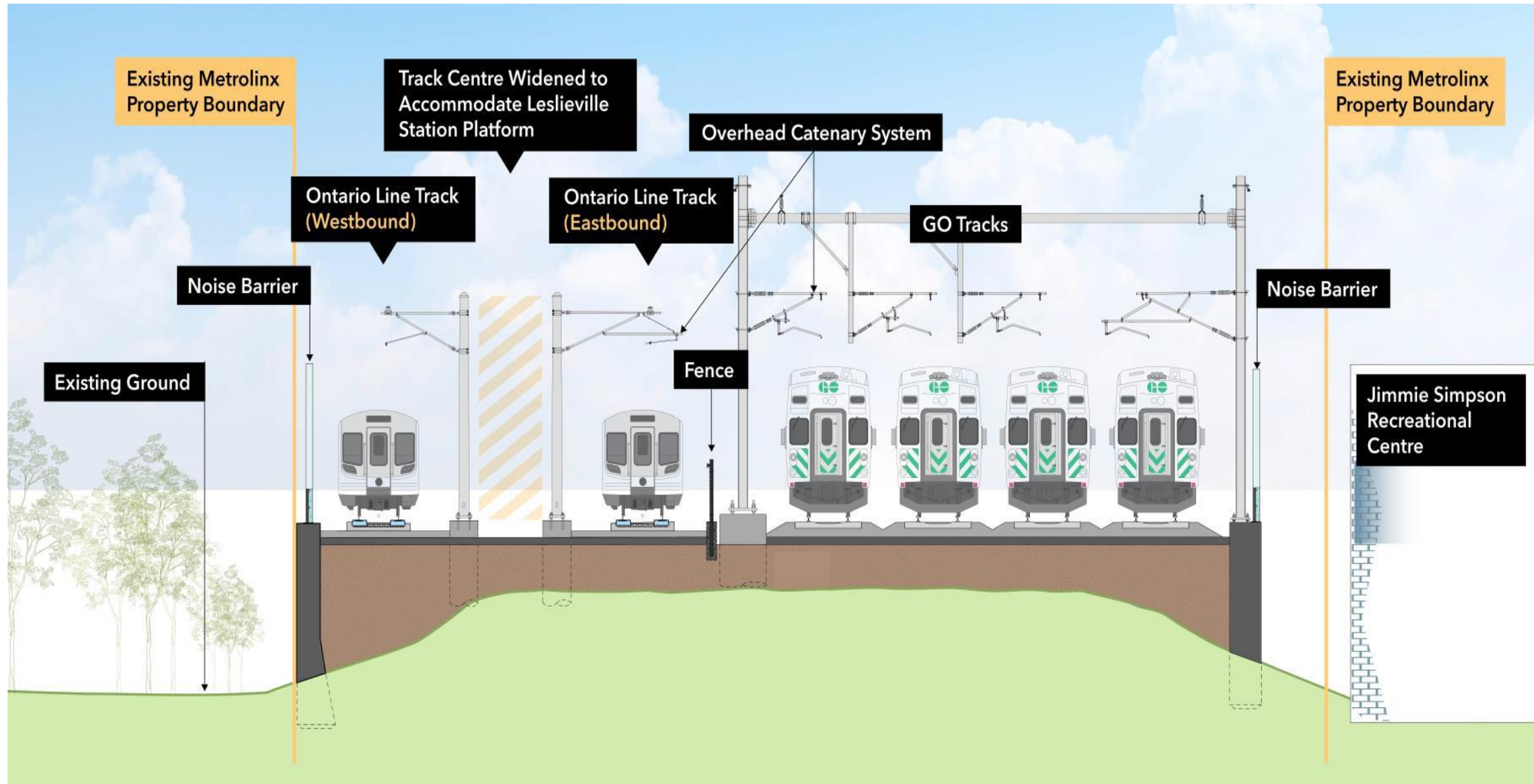


Maintain confidentiality of sensitive issues, when requested by participants.



Commit to equity, diversity and inclusion by supporting the participation of the whole community regardless of race, gender, class, sexuality, age or ability.

Summary of Lakeshore East Joint Corridor Early Works



Construction Liaison Committees (CLC)

Construction Liaison Committees (CLCs) provide open, two-way communication and sharing of information before and during the construction of the Ontario Line project. The CLC will focus on the impacts, issues and areas of concern for resolution related to the Ontario Line construction within the Leslieville/Riverside neighbourhoods. The full Terms of Reference will be shared with the CLC via email.

- The CLC will meet regularly as construction activities get underway
- CLC frequency is flexible, depending on schedules/availability and critical construction work
- Metrolinx will work with stakeholders to develop meeting agendas
- Meetings will last 60-90 minutes, depending on the agenda
- Metrolinx to chair the CLC with support from the project contractor
- Project contractor will participate and lead the construction updates
- Action items/issues/complaints to be logged for resolution

Construction Liaison Committee (CLC)

Community representatives



- Elected officials
- Community groups/residents
- Residents' groups/associations
- Tenant representatives
- BIAs
- Business owners

City of Toronto



Project team members



- Metrolinx—representatives from Subways Sponsors Office, Design Division, Community Engagement, Project Teams and Contractor/Project Co.

Who Does What?



A division of CRH Canada Group Inc.

Responsible for construction delivery, establishing the construction schedule, determining construction plans and the care and control of construction sites.



Contribute subject matter expertise regarding City polices, requirements, permits and procedures.

Ensure key City and community interests are noted and addressed through application design reviews and permits.

Work with partners to minimize negative impacts on residents and the environment.

Monitor construction sites for safety and adherence to City standards and bylaws.



Overarching accountability for entire project, strategy and content approvals, building relationships and understanding needs of the community.

Oversight of construction contractors to ensure compliance with contractual obligations, including work schedules, adherence to acceptable noise levels, traffic management plans and permit conditions.

Construction Liaison Committee Members



Community Members

- Riverside BIA
- Leslieville BIA
- WoodGreen Community Services
- Lakeshore East Community Advisory Committee
 - Shelley Kline
 - Tony Whitaker
- Rosemary Waterston (resident)
- Catherine Riddell (resident)
- Stephen Davies (resident)
- Fontbonne Ministries
- Saulter Street Brewery
- Bonjour Brioche Bakery
- Tabule Restaurant
- Jimmie Simpson Recreation Centre (City of Toronto)

Elected Officials (or designate)

- MP Julie Dabrusin
- MPP Peter Tabuns
- Councillor Paula Fletcher



- Transit Expansion Division
- Parks, Forestry and Recreation
- Transportation Services



- Ontario Line Community Engagement
 - Mark Clancy
 - Katiana Moussa
 - Louis Vattr
- Dufferin Construction
- Project Sponsor
- Capital Projects Group
- Traffic and Transportation
- Other project teams as required

Impact Levels

Major Impact



Includes:

- Major intersection work
- Overnight work
- Transit impacts
- Road closures
- Public parking displacement

Medium Impact



Includes:

- Paving
- Long term traffic lane closures
- Work affecting access to private driveways

Minor Impact



Includes:

- Short-term traffic lane closures
- Temporary pedestrian detours

Summary of Lakeshore East Joint Corridor Early Works



Lakeshore East Joint Corridor Early Works Scope of Work Summary



Future station



Utility relocations along Queen Street, Dundas Street, Logan Avenue and the surrounding side streets.



Upgrade to the rail corridor, including excavation of the existing embankment, installation of new drainage infrastructure, installation of pre-cast concrete retaining walls and backfill of the corridor.



Removal of existing and construction of new GO Bridges at Queen Street East, Dundas Street East and Logan Avenue. Construction of two new Ontario Line bridges at Dundas and Logan.



Realignment of the existing GO tracks, construction of a fourth GO track, and preparation works for eastbound and westbound Ontario Line tracks.



Construction of noise barrier walls to mitigate the impact of the railway on adjacent properties.



Construction of retaining walls for construction of the future Ontario Line stations: Riverdale-Leslieville station and Gerrard station.



Overview | Bridges Redevelopment

