

Moss Park Construction Liaison Committee

May 9, 2024

 METROLINX



Agenda

Welcome (5 minutes)

- Introductions
- Land Acknowledgement
- Safety Moment

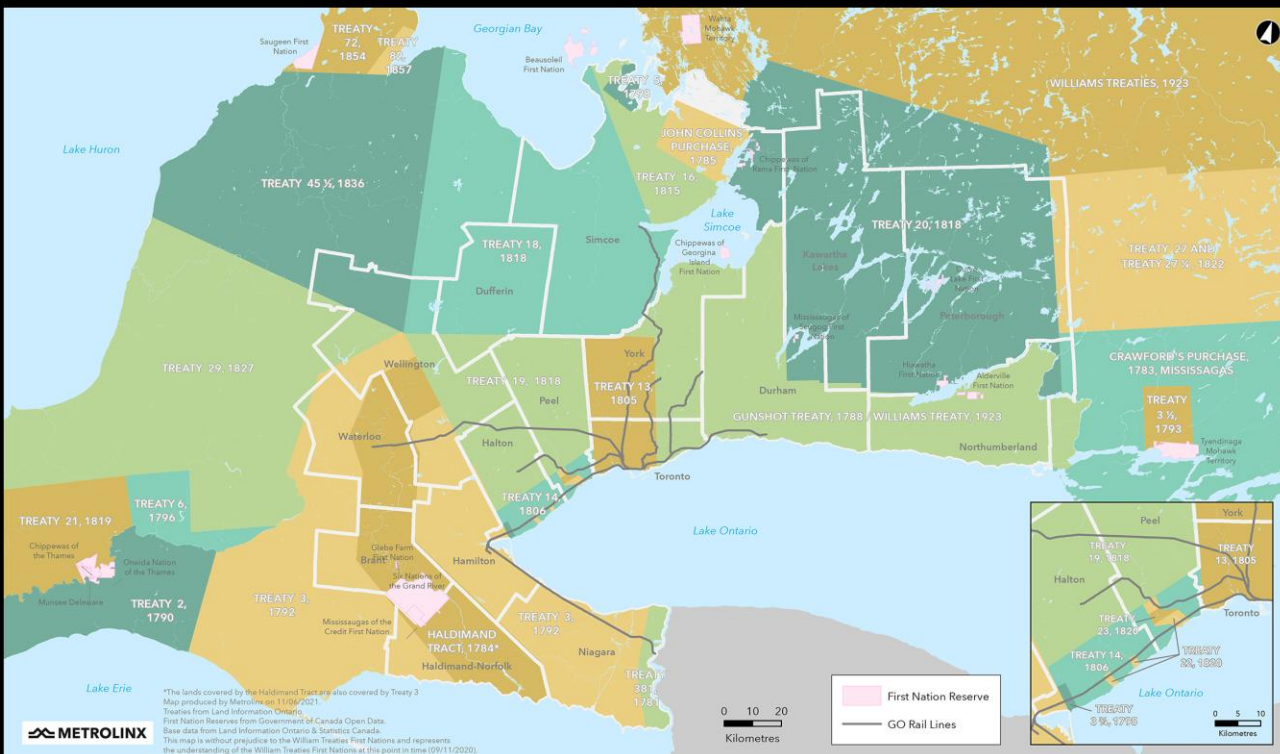
Presentation (25 minutes)

- Review of Action Items
- Construction Update
- Community Engagement
- We Are Here For You



Land Acknowledgment

Treaties and Reserves in the Greater Golden Horseshoe



Let us take a moment to acknowledge we are on lands that have been, and continue to be, home to many Indigenous Peoples including the Anishnabeg, the Haudenosaunee and the Huron-Wendat peoples.

We are all Treaty people. Many of us have come here as settlers, as immigrants or involuntarily as part of the trans-Atlantic slave trade, in this generation, or generations past.

We acknowledge the historic and continued impacts of colonization and the need to work towards meaningful reconciliation with the original caretakers of this land.

We acknowledge that Metrolinx operates on territories and lands covered by many treaties that affirm and value the rights of Indigenous communities, Nations and Peoples.

We understand the importance of working towards reconciliation with the original caretakers of this land. At Metrolinx, we will conduct business in a manner that is built on a foundation of trust, respect and collaboration.

Safety Moment

Cycling Safely

As weather improves in spring and summer, more and more cyclists will share roads, and use bike lanes. It's important to be mindful of surroundings, for both drivers and cyclists.

- **For cyclists, be visible:** As a cyclist, you aren't necessarily always visible to drivers. Let's keep the road safe by ensuring bikes are visible with reflectors, wear appropriate bright clothing and helmet, and use hand signals when necessary. Use dedicated bike lanes when available as well.
- **For drivers, be mindful of your surroundings:** As a driver, give yourself extra time when changing lanes or intersections and be extra certain that blind spots are clear. Give cyclists the benefit of the doubt and take your time!
- **For everyone, follow the rules and share the road:** We all share and use roadways and cycling lanes, so let's work together. Allow extra time for your travel and watch for both bikes and cars around you. Be kind, be courteous and be safe.



PREVIOUS CLC MINUTES AND ACTION ITEMS

ACTION ITEM	STATUS UPDATE
<p>Metrolinx to schedule a meeting with the Moss Park Coalition and STEPS Public Art group.</p>	<ul style="list-style-type: none"> • In progress
<p>Metrolinx to schedule offline meeting with Moss Park Coalition to share ideas on business engagement.</p>	<ul style="list-style-type: none"> • In progress
<p>OTG to provide update on the noise mitigation efforts of the drill/auger cleaning.</p>	<ul style="list-style-type: none"> • Implementation program ongoing. Specific details in construction update
<p>Metrolinx to send out a copy of the presentation and calendar invites for all future meetings.</p>	<ul style="list-style-type: none"> • Ongoing

Construction Update



Panoramic view of the piling work zone looking south

Current Work

Current Work

Pile Drilling - Progress

- Approximately 120 piles have been installed, which brings the work to roughly 30% completion
- Between the two drill rigs, 8-11 piles total per day being completed.
- Current forecast dictates piling completion for early July.



View of piling work zone

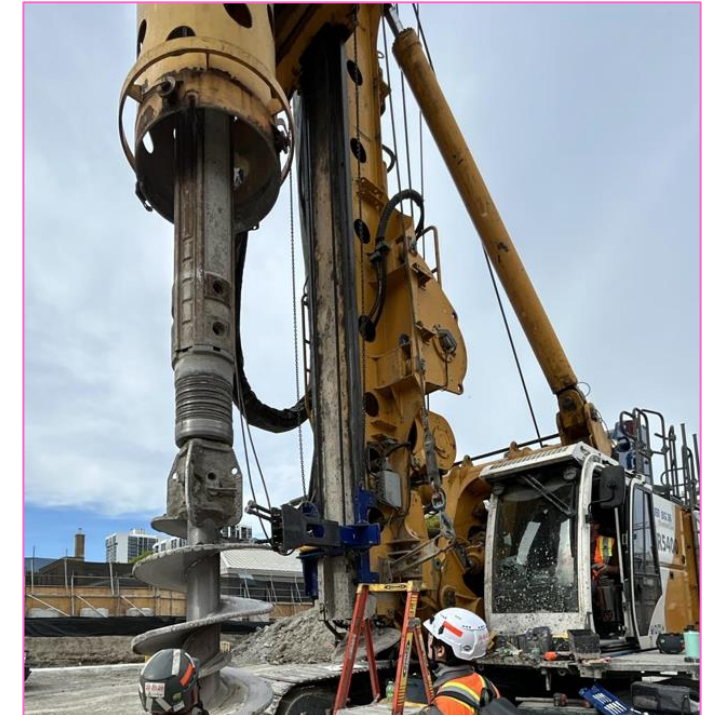
Current Work

Mitigation - Auger Attachment & Dust Suppression

- One rig has functioning cleaning attachment and performing well. Second rig to have new attachment reinstated in the coming 2 weeks.
 - Specially designed by Liebherr from Germany to perform under these circumstances
- Dust suppression in the form of mobile water totes moved to each hole drilled in order to provide moisture to the dry bedrock material.



Water sprayed on dry spoils to reduce dust

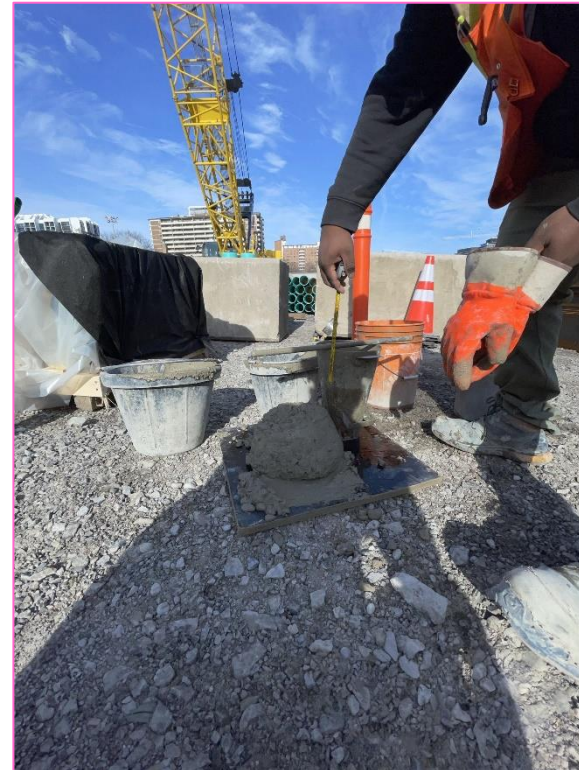


Cleaning attachment to interact with auger to remove spoils

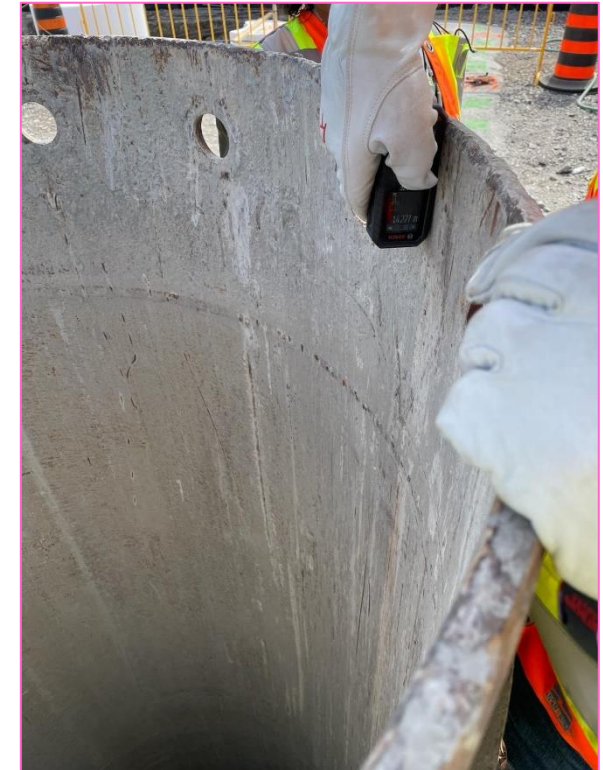
Current Work

Pile Drilling - Quality Monitoring

- Concrete performance is tested rigorously and frequently to ensure pile performance.
- Pile depth and shaft cleanliness is monitored every single hole.
- Tight Squeeze: Each pile has a positional tolerance of +/- 25mm



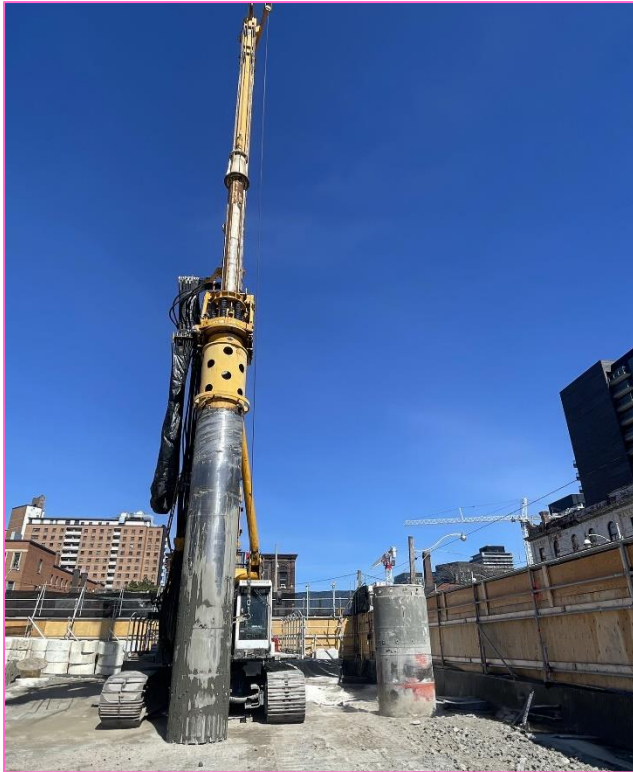
Concrete slump testing



Water verification instrument

Current Work

Guide Wall Pour - Progress



Drill rig



East wall



South wall

Current Work

Drainage Work

Proper drainage in infrastructure is crucial.

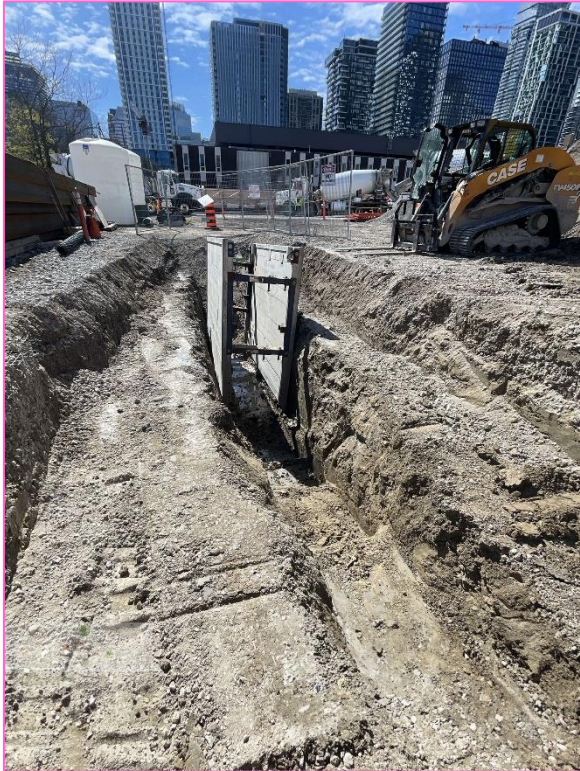
- It helps prevent flooding by efficiently carrying away excess water, safeguarding structures, and utilities from water damage.
- Drainage prevents soil erosion, maintaining the stability of the ground beneath the future Moss Park Station, ensuring the longevity and functionality of infrastructure, making it essential for sustainable development and public safety.

Current works:

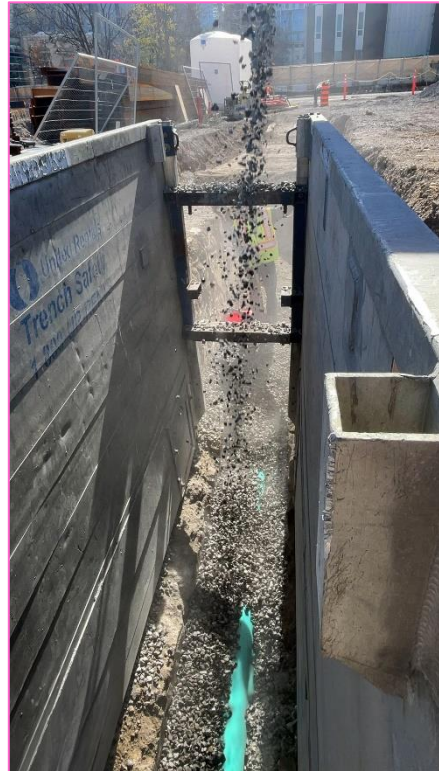
- **Catch basin**
- **Fire hydrant feed installation**
- **Sewer discharge and relocation**

Current Work

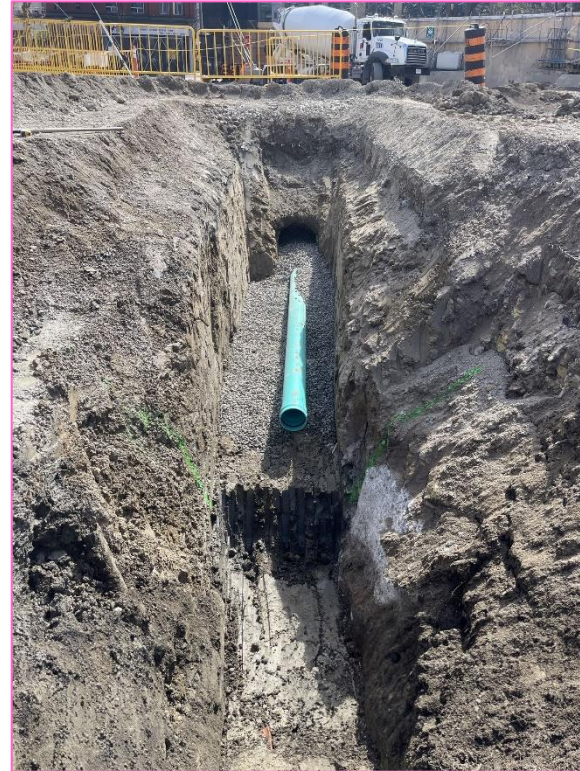
Drainage work



Trench installation of drainage



Trench box for deeper excavations



Open cut for shallow excavations



Backfilling drainage structures

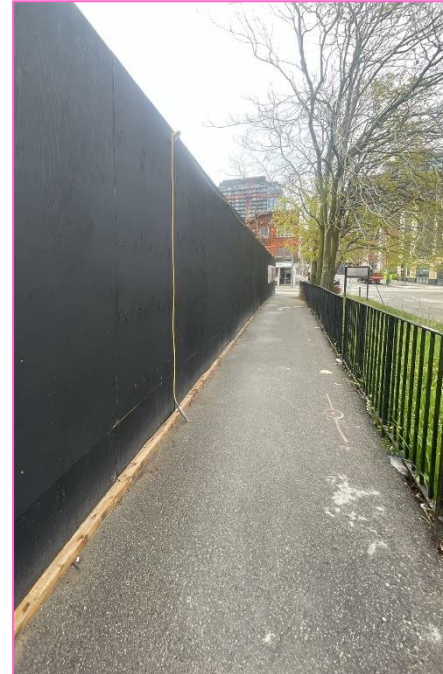
Site Cleanliness and Safety

Current Work

Site Cleanliness and Safety

OTG remains committed to ensuring the site remains tidy and poses no risk and no-impact to the community at all times.

- Sidewalks and lanes around the perimeter to remain clear of debris, dirt/dust/mud during dry and wet weather.
- Monitoring of the graffiti is ongoing, and any graffiti removed within a 24-hour period.
- Vandalism to exterior facilities is repaired as soon possible to maintain community expectations.



Vandalized lighting



Dirt and mud tracked out from the construction vehicles

Current Work

Everyone Follows the Rules

- We are committed to enforcing approved haul routes for OTG subcontracted trades. Our focus is on reinforcing adherence rather than solely disciplining operators, promoting a culture of consistent compliance.

Haul Routes

- At the east entrance, trucks will enter from Sherbourne Street, and turn left into the site assisted by a flag-person(s).
- At the southwest exit, trucks will exit the site turning right onto Queen Street East assisted by a flag-person(s).
- All sidewalks and lanes will remain open with no impacts to the TTC stops, routes or schedules.

Upcoming Works

Moss Park Station 2024 construction look-ahead

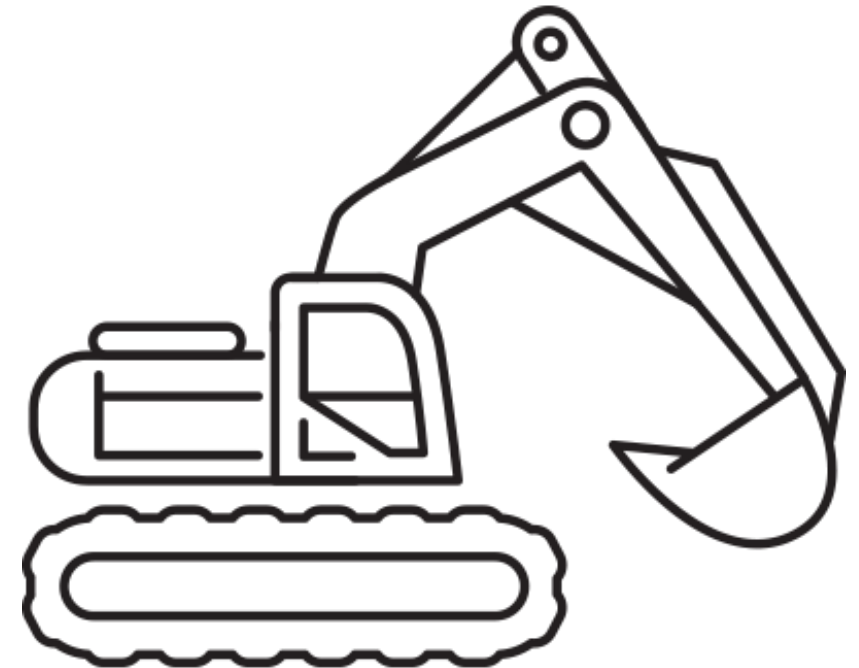
Major construction milestones to propel the Ontario Line subway forward.

Time	Activity	Details & Purpose
Spring	Piling	Piling work around the perimeter of the future station ensures structural support before heavy digging begins.
Summer	Excavation	Soils will be excavated to create shafts from the street level to the station level 30m underground.
Fall/ Winter 2025	Station site entry preparation	Excavation of the station cavern to connect the station shaft and the tunnels.

Upcoming Work

Q2 Activities

- **Continuation of site servicing installation:**
 - Electrical conduit installations
 - Water treatment tanks
- **Excavation of the shaft**
 - Expected July timeframe
- **Paving of the site access**



Shaft Excavation



Virtual Open House

June 13, 2024

More event details to come.

Community Artwork

Community Artwork

Update

- In fair practice across the south civils alignment of the seven (7) stations of the Ontario Line, community consultation for the artwork panels will be launched during the week of May 27th by the Community Engagement teams.
- Community feedback will be collected through a survey. The survey will be electronic and various methods will be used to promote feedback: community pop-ups, social media, etc.
- The community's voice will be the directive on the reflection of the panel's artwork.
- Survey results will be shared online and via CLCs.



Discussion



Artist's rendering – subject to change

Community Engagement

Community Engagement

Ongoing Community Canvassing and Participation

Project staff and representatives will commence ongoing interaction with the community, for the duration of the project. Activities will include:

- Pop-ups presences in the community (parks, events, markets).
- Pop-ups in condo lobbies.
- Monthly CLC meetings.
- In-person and virtual consultation with residences and businesses.
- Shop Local digital campaigns, supporting communities affected by Ontario Line Construction.
- News, progress and information shared in the Ontario Line newsletter (currently over 6,600 subscribers).

We Are Here For You

Community Engagement Contact Information

Metrolinx will keep the community, residents and businesses informed by providing project updates, seeking input and feedback and addressing questions and concerns effectively and quickly.

Connect With Us:

- Zahrah Munas , Community Engagement Advisor Zahrah.Munas@metrolinx.com, 437-328-5354
- Mark Clancy, Senior Manager, Community Engagement Mark.Clancy@metrolinx.com, 647-449-2857

Telephone 24/7 @ 416-202-5100

Ontario Line e-newsletter @ [Metrolinx.com/OntarioLine](https://www.metrolinx.com/OntarioLine)

Follow us on social media @ OntarioLine

