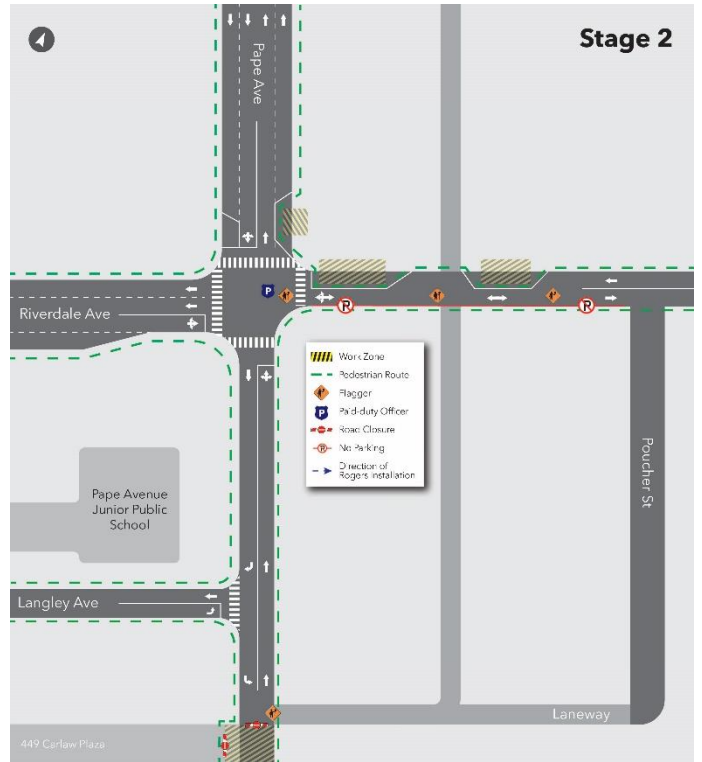
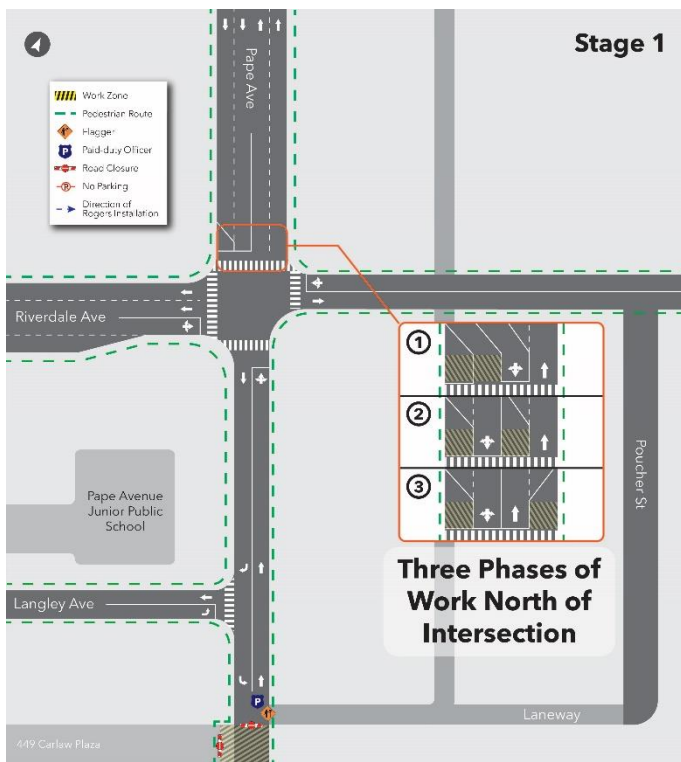


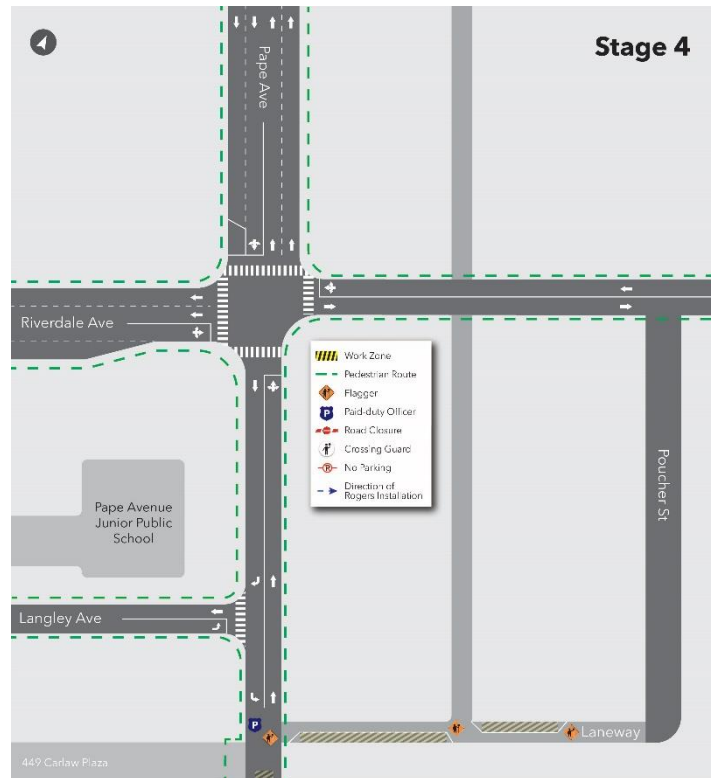
Rogers Cable Relocations Near Pape and Riverdale

Expected start date: As early as May 27, 2024

Expected duration: Approximately five (5) weeks

Hours of work: Weekdays, 7 a.m. to 11 p.m., Weekends 9 a.m. to 7 p.m.





What is happening?

- As part of the utility relocation works taking place near Pape and Riverdale for the Ontario Line, a crew from Rogers will mobilize as early as May 27 to begin relocating their underground communications cables.
- This work will take approximately five weeks to complete and will be broken into four stages.

Contact us:

Call us 24/7 at: [416-202-5100](tel:416-202-5100)

Write to us at: ontarioline@metrolinx.com

Find us on Twitter, Facebook, and Instagram: [@ontarioline](https://www.instagram.com/ontarioline)

Visit the website: www.metrolinx.com/ontarioline

Visit our community offices:

Riverside:

770 Queen St. E, Toronto, ON, M4M 1H4

General hours:

- Mondays, Tuesdays and Fridays: 9 a.m. to 5 p.m.
- Wednesdays and Thursdays: 10 a.m. to 6 p.m.

Thornclyffe Park:

East York Town Centre

45 Overlea Blvd., Toronto, ON M4H 1C3

Unit 153 (across from the Rogers store)

General hours

- Monday to Friday: 9 a.m. to 5 p.m.

- The first two stages of the Rogers relocation works will take place concurrently with Toronto Hydro's chamber construction work at the entrance to the 449 Carlaw plaza.
- The new cables will be installed underground in the laneway east of Pape between 449 Carlaw plaza entrance and Riverdale Avenue.

What to expect

Construction

- Work will involve the use of excavators, a hydrovac truck, and a directional drill to install cables below the ground. This is a requirement to safely protect existing utility infrastructure.
- Residents and businesses in the area may hear noise caused by work equipment. Crews will take measures to minimize noise impacts wherever possible.
- Work may be delayed due to weather conditions or unforeseen circumstances.

Traffic and Pedestrian Details

- **Stage 1:**
 - Crews will progress from west to east north of the northern east-west crosswalk at Pape and Riverdale.
 - Crews will occupy one lane at a time, in addition to the southern end of the parking lane.
 - Bi-directional traffic will be maintained on Pape Avenue.
 - This stage will take approximately one week.
- **Stage 2:**
 - Crews will occupy a section of the curb lane and sidewalk on Pape Avenue and two sections of the curb lane on Riverdale Avenue.

Contact us:

Call us 24/7 at: [416-202-5100](tel:416-202-5100)

Write to us at: ontarioline@metrolinx.com

Find us on Twitter, Facebook, and Instagram: [@ontarioline](https://www.instagram.com/ontarioline)

Visit the website: www.metrolinx.com/ontarioline

Visit our community offices:

Riverside:

770 Queen St. E, Toronto, ON, M4M 1H4

General hours:

- Mondays, Tuesdays and Fridays: 9 a.m. to 5 p.m.
- Wednesdays and Thursdays: 10 a.m. to 6 p.m.

Thornccliffe Park:

East York Town Centre

45 Overlea Blvd., Toronto, ON M4H 1C3

Unit 153 (across from the Rogers store)

General hours

- Monday to Friday: 9 a.m. to 5 p.m.

- Pedestrian access will be maintained via the creation of pedestrian routes around the exterior of the work zones within the roadway, protected by concrete barriers.
- Traffic on Riverdale will be reduced to a single lane, with bi-directional alternating traffic maintained by traffic control personnel and a paid-duty officer.
- Street parking will be removed on the south side of Riverdale Avenue between Pape and Poucher.
- This stage will take approximately one week.
- **Stage 3:**
 - Crews will use a directional drill to install cables under the laneway from north to south.
 - Traffic control personnel will be on-site throughout the laneway to assist with vehicular and pedestrian movements. Vehicular access to garages in the laneway will be maintained.
 - This stage will take approximately one week.
- **Stage 4:**
 - Crews will occupy alternating work zones within the foot of the laneway/Poucher Street.
 - Bi-directional traffic will be maintained via traffic control persons and a paid-duty officer.
- Throughout all stages, pedestrian routes will remain open around the work zone.
- Fencing will be erected to separate work zones from the public.
- Access to residences will always be maintained.

Safety

- Paid duty officers and/or traffic control personnel will be on-site managing traffic and pedestrian flow.
- Signage will be posted around the site to direct pedestrians.

Contact us:

Call us 24/7 at: [416-202-5100](tel:416-202-5100)

Write to us at: ontarioline@metrolinx.com

Find us on Twitter, Facebook, and Instagram: [@ontarioline](https://www.instagram.com/ontarioline)

Visit the website: www.metrolinx.com/ontarioline

Visit our community offices:

Riverside:

770 Queen St. E, Toronto, ON, M4M 1H4

General hours:

- Mondays, Tuesdays and Fridays: 9 a.m. to 5 p.m.
- Wednesdays and Thursdays: 10 a.m. to 6 p.m.

Thornccliffe Park:

East York Town Centre

45 Overlea Blvd., Toronto, ON M4H 1C3

Unit 153 (across from the Rogers store)

General hours

- Monday to Friday: 9 a.m. to 5 p.m.

- Equipment may be left on site but will be properly secured and stored to ensure safety.
- Dust will be mitigated by misting, sweeping and/or the use of a hydrovac truck.
- After-hours security will be onsite between 7 p.m. and 7 a.m. to ensure equipment and materials are not tampered with.

Contact us:

Call us 24/7 at: [416-202-5100](tel:416-202-5100)

Write to us at: ontarioline@metrolinx.com

Find us on Twitter, Facebook, and Instagram: [@ontarioline](#)

Visit the website: www.metrolinx.com/ontarioline

Visit our community offices:**Riverside:**

770 Queen St. E, Toronto, ON, M4M 1H4

General hours:

- Mondays, Tuesdays and Fridays: 9 a.m. to 5 p.m.
- Wednesdays and Thursdays: 10 a.m. to 6 p.m.

Thornccliffe Park:

East York Town Centre

45 Overlea Blvd., Toronto, ON M4H 1C3

Unit 153 (across from the Rogers store)

General hours

- Monday to Friday: 9 a.m. to 5 p.m.