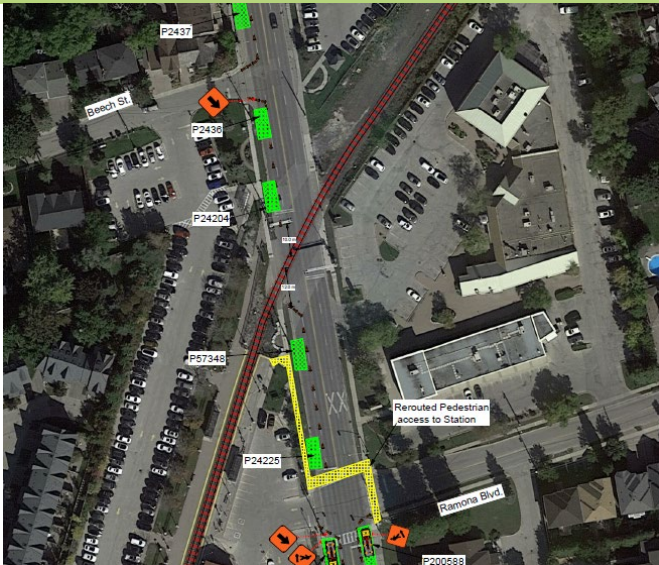


Relocation and replacement of utility poles on Markham Rd. near Ramona Blvd.

May 13, 2024 to May 15, 2024 (7:00 a.m. – 4:30 p.m.)



Project Overview

GO service is expanding to serve you better – with more frequent service, more stations, cleaner technology, and more connections. Across the entire network, our goal is to deliver over 10,000 train trips a week – so you won't need a schedule because you know the next train will be coming soon. GO Expansion will transform the GO rail network from a commuter service into an all-day, rapid system.

The Local Project

As part of the GO Rail Network Electrification project, crews will be digging two new pole holes to install two new utility poles, removing two existing old utility poles, and transferring existing conductors to the new poles near the Stouffville rail corridor. This work will prepare the Stouffville corridor for future 15-minute, two-way, all-day GO train service.

What to expect

From May 13 to May 15, 2024, Metrolinx contractors will remove two redundant poles, install two new hydro poles, and transfer existing conductors to the new poles. Construction crews will be on site Monday to Friday from 7:00 a.m. to 4:30 p.m. Nearby residents can expect to experience some noise from the use of heavy construction equipment.

The north and southbound curb lanes on Markham Road at Ramona Blvd. will be closed daily during the work hours to accommodate the utility relocation. A spotter will be stationed at Ramona Blvd. and Markham Rd., to redirect pedestrians to the south sidewalk. Signage will be posted to support vehicular traffic.

Questions

We have a dedicated community relations team in place to work with residents and businesses in York Region. If you have any questions or concerns about this work, please contact us anytime at YorkRegion@metrolinx.com.

Write to us at: YorkRegion@metrolinx.com
Call us at: 416-202-4453
Find us on Twitter [@Metrolinx](https://twitter.com/Metrolinx)
Visit the website: www.metrolinx.com

As with all construction, work may be adjusted, rescheduled or extended due to weather conditions or unforeseen circumstances.