



LAND FOR SALE

**S/W VICTORIA STREET & SOUTH BLAIR**  
WHITBY, ONTARIO





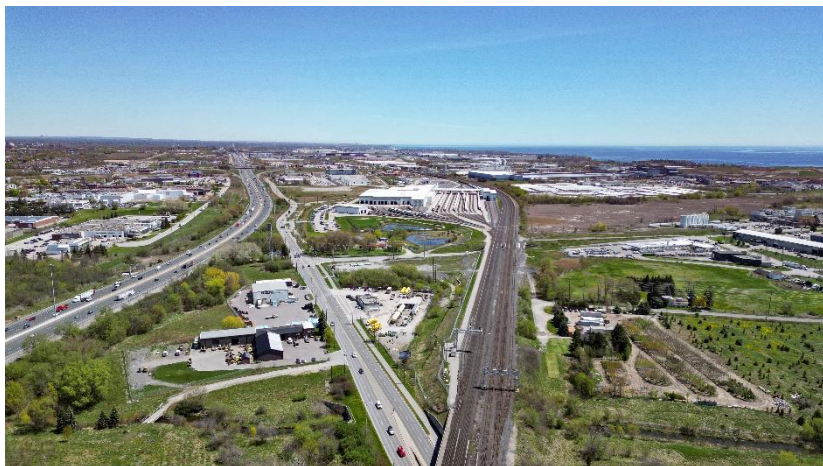
# SW VICTORIA ST & SOUTH BLAIR WHITBY, ON

## PROPERTY DETAILS

<b>Cross Street</b>	SW corner of Victoria Street E & South Blair Street
<b>Lot Size</b>	4.9 acres site (+/- 1.5 acres assumed developable)
<b>Zoning</b>	M2 Industrial
<b>PIN</b>	264850197
<b>Realty Tax</b>	\$23,514.07 (2023)

## PROPERTY HIGHLIGHTS

Close proximity to Highways 401, 412 and GO transit



Approximate site outline



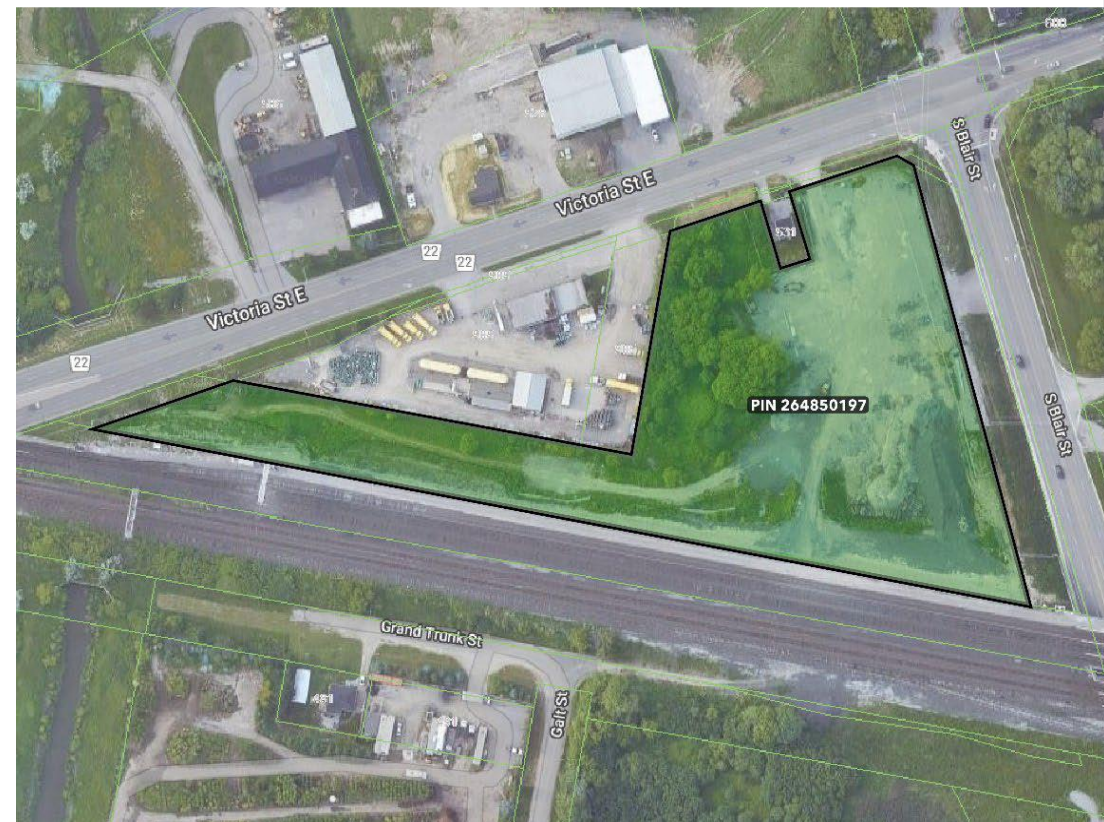
# SW VICTORIA ST & SOUTH BLAIR WHITBY, ON

## M2 ZONING PERMITTED USES

- Assembly plant
- Cartage express or truck transport terminal or yard
- Contractor's or tradesman's shop
- Dry-cleaning establishment
- Fabricating plant
- Laundry shop
- Manufacturing plant
- Parking lot
- Processing plant
- Public use
- Retail outlet
- Wholesale outlet
- Office accessory to a permitted use
- Service shop
- Storage area for boats and trailers
- Warehouse

## RESIDENTIAL USES

- single detached dwelling if occupied by a caretaker, watchman or other similar person employed full time on the lot on which such dwelling house is located



# SW VICTORIA ST & SOUTH BLAIR

## WHITBY, ON



### DRIVE TIMES / DISTANCE

DESTINATION	DISTANCE	TIME
Highway 401	4.8 km	5 mins
Highway 412	8.6 km	8 mins
Highway 418	28.7 km	19 mins
Highway 407 (via Hwy 401 & 412)	21.3 km	14 mins
Whitby GO Station	2.9 km	6 mins



# SW VICTORIA ST & SOUTH BLAIR

## WHITBY, ON

### AMENITIES & TRANSIT

- SW VICTORIA STREET AND SOUTH BLAIR
- COFFEE SHOPS & RESTAURANTS
- SHOPPING
- HOTELS
- GO TRANSIT STATIONS
- OSHAWA CENTRE TERMINAL
- GO TRANSIT LINE
- DURHAM TRANSIT







**FOR MORE INFORMATION, CONTACT:**

**GORAN BRELIH, SIOR**  
Executive Vice President, Broker  
416 756 5456  
goran.brelih@cushwake.com

**DIANA MCKENNON**  
Sales Representative  
416 642 5356  
diana.mckennon@cushwake.com

