

Ontario Line

Queen - Spadina

Construction Liaison Committee

June 4, 2024



Agenda

Welcome

- Introduction
- Land Acknowledgment
- Safety Moment

Presentation

- Construction Update
- Upcoming works

Q/A and Discussion

- Community Engagement
- Contact Us



Land Acknowledgment

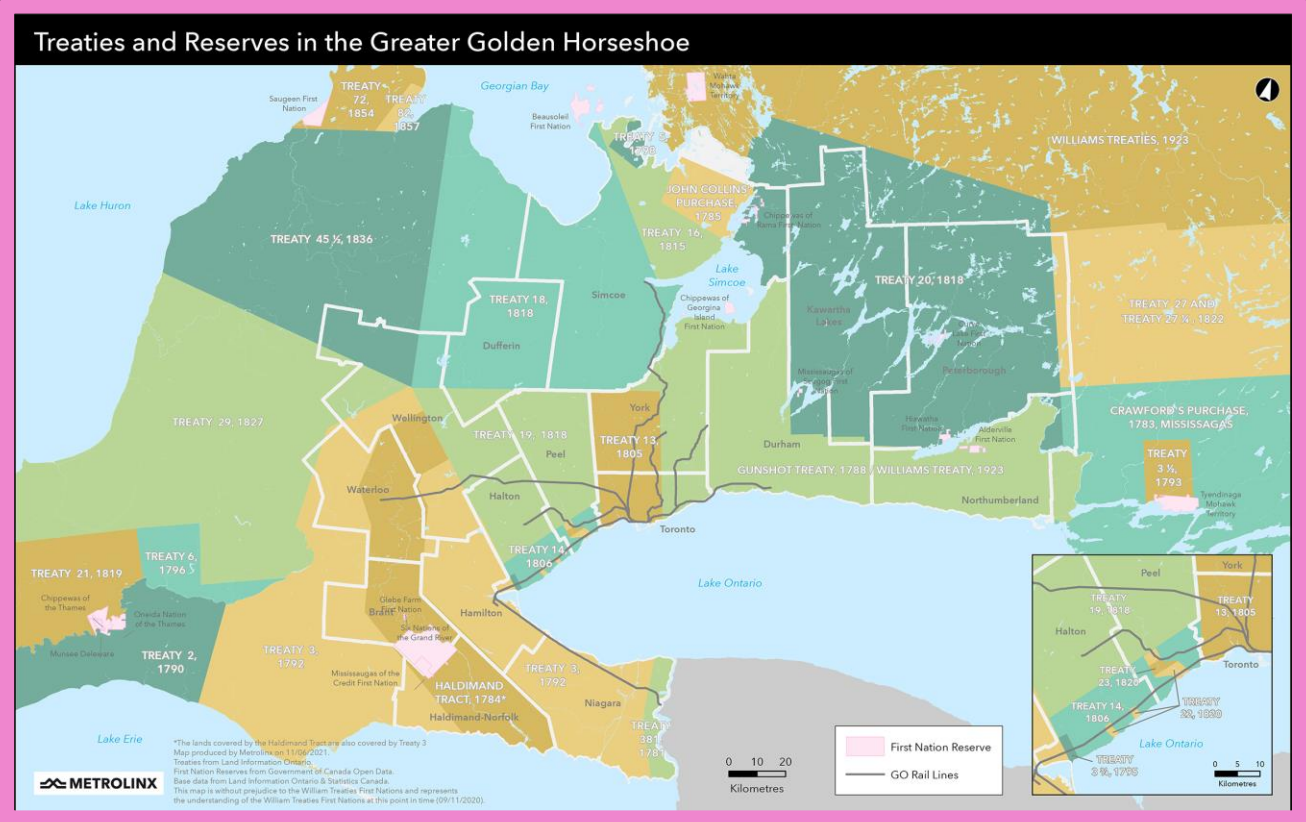
Let us take a moment to acknowledge we are on lands that have been, and continue to be, home to many Indigenous Peoples including the Anishnabeg, the Haudenosaunee and the Huron-Wendat peoples.

We are all Treaty people. Many of us have come here as settlers, as immigrants or involuntarily as part of the trans-Atlantic slave trade, in this generation, or generations past.

We acknowledge the historic and continued impacts of colonization and the need to work towards meaningful reconciliation with the original caretakers of this land.

We acknowledge that Metrolinx operates on territories and lands covered by many treaties that affirm and value the rights of Indigenous communities, Nations and Peoples.

We understand the importance of working towards reconciliation with the original caretakers of this land. At Metrolinx, we will conduct business in a manner that is built on a foundation of trust, respect and collaboration.



Safety Moment

Sun Safety

As we head into the warmer months, it's important to keep sun safety in mind. The sun's rays can be harmful if we're not careful. Here are some safety tips below to ensure we are practicing safety in the sun:

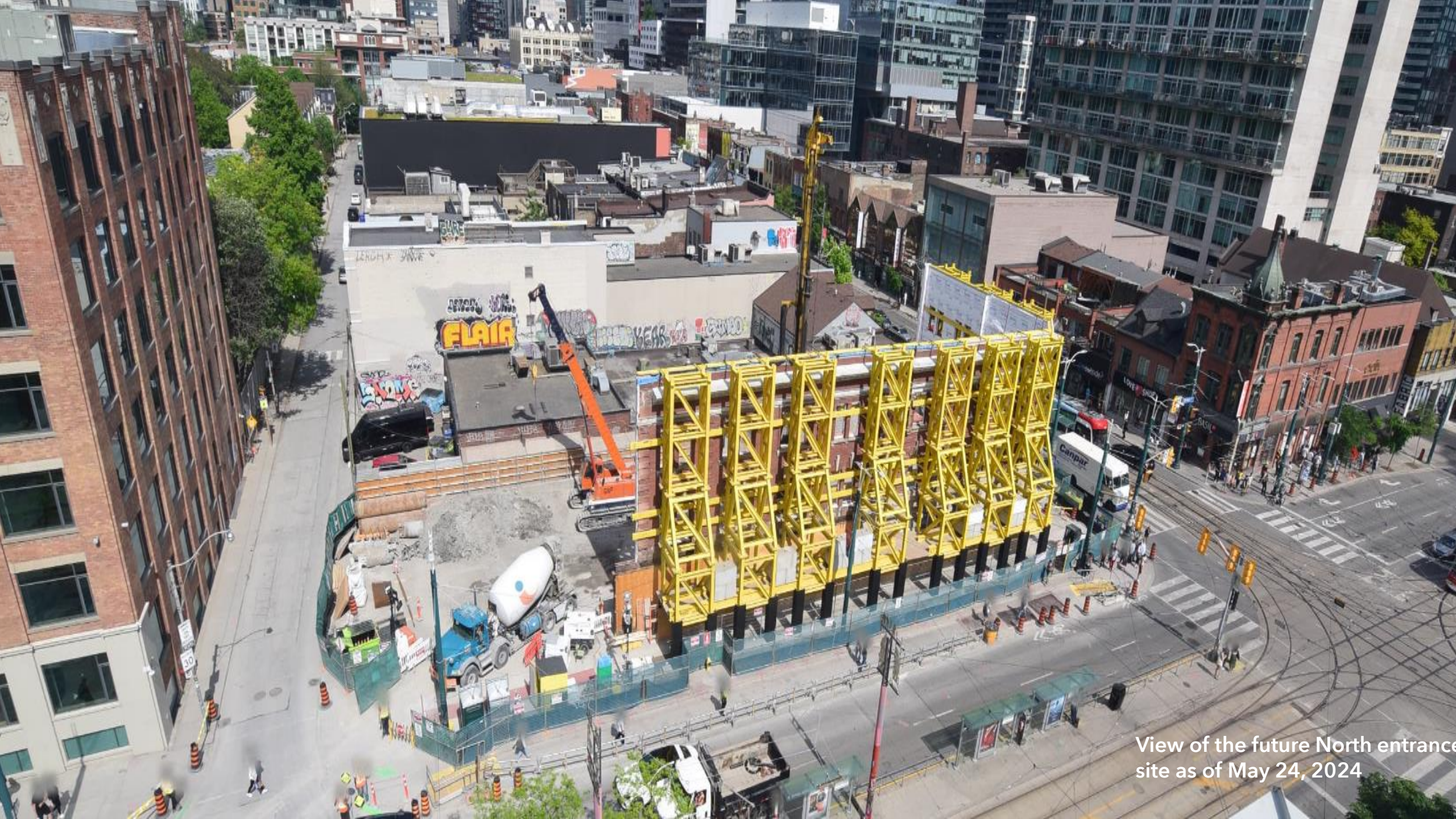
- Wear sunscreen: Apply sunscreen with SPF 30 or higher at least 15 minutes before going outside, and reapply every two hours or after swimming or sweating.
- Seek shade: Try to stay in the shade, especially during the sun's peak hours between 10 a.m. and 4 p.m.
- Wear protective clothing: Wear lightweight, long-sleeved shirts, pants, sunglasses, and wide-brimmed hats to protect your skin and eyes from the sun.
- Stay hydrated: Drink plenty of water throughout the day, especially when spending time outdoors in the sun.
- Check the UV index: Be aware of the UV index in your area and take extra precautions when it's high.

By following these simple tips, we can all enjoy the sunshine safely. Let's make sun safety a priority this summer!



Queen-Spadina Station: Construction Update

North Site



View of the future North entrance site as of May 24, 2024

WORK IN PROGRESS

- Permanent plywood hoarding installation is underway along Spadina Avenue, running underneath the façade retention towers. Crews will next paint the plywood black.
- Installation of permanent hoarding on Bulwer Steet is in progress is expected to be complete in July 2024.
- Following the completion of the hoarding installation this month, the pedestrian walkway will be shifted under the retention towers.
- Crews have installed a temporary foundation for placement of a power substation; installation of the substation is planned for June.



View of the overhead protection at the future North station site as of May 28, 2024

WORK IN PROGRESS

Update on Piling

- Approximately **105** piles have been installed (roughly **80%** completion).
- Updated hours of work for piling (until end of June 2024)
 - 7 a.m. to 11 p.m. Monday to Friday
 - 7 a.m. to 5 p.m. Saturdays*Additional hours of works / changes to schedule may occur*
- The next phase of work includes installation of piles to support the future Transit Oriented Community and excavation of the station shaft.
- Piles installed act as foundations for future excavation work.

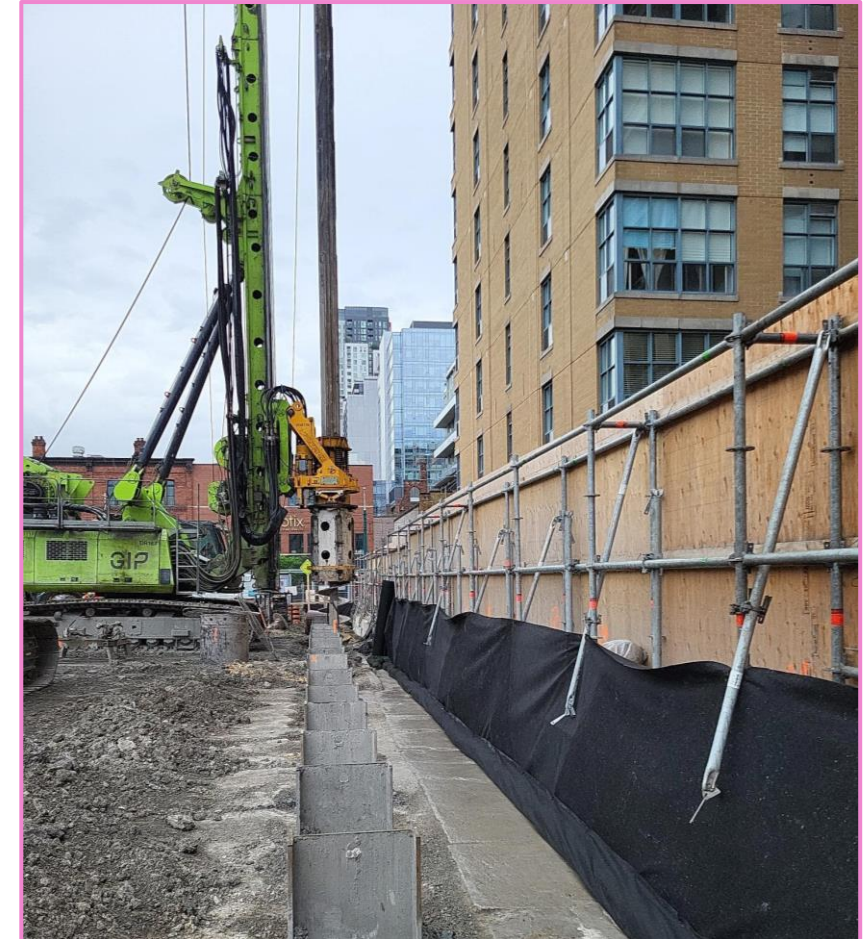


View of ongoing works at the future North station site as of May 25, 2024

South Site

WORK IN PROGRESS

- Gates in the access and egress of the construction site have been installed.
- Works will continue in June with the installation of a gate onto Graffiti Alley and the completion of the hoarding along Spadina Avenue.
- Temporary coroplast project signage has been installed on the areas of the hoarding that currently have no signage, this includes project information and key contact information.
- Marketing signage is expected to be installed in the next four to six weeks, and artwork is being planned for Graffiti Alley.
- Metrolinx remains committed to working closely with the community to collaborate on art designs that resonates and reflects the community's input.
- Installation of underground monitoring devices to investigate utilities and ground conditions are now completed; additional work expected in July.



View of permanent fence hoarding along Graffiti Alley at the future south station site as of May 28, 2024

WORK IN PROGRESS - FUTURE SOUTH ENTRANCE

Work in progress

- Approximately **165 piles** have been installed (roughly 83% completion)
- Updated hours of work:
 - 7 a.m. to 5 p.m. Monday to Friday
 - 7 a.m. to 5 p.m. Saturdays*Additional hours of works / changes to schedule may occur*
- The next phase of work includes installation of piles to support the future Transit Oriented Community.
- Piles installed act as foundations for future excavation work.



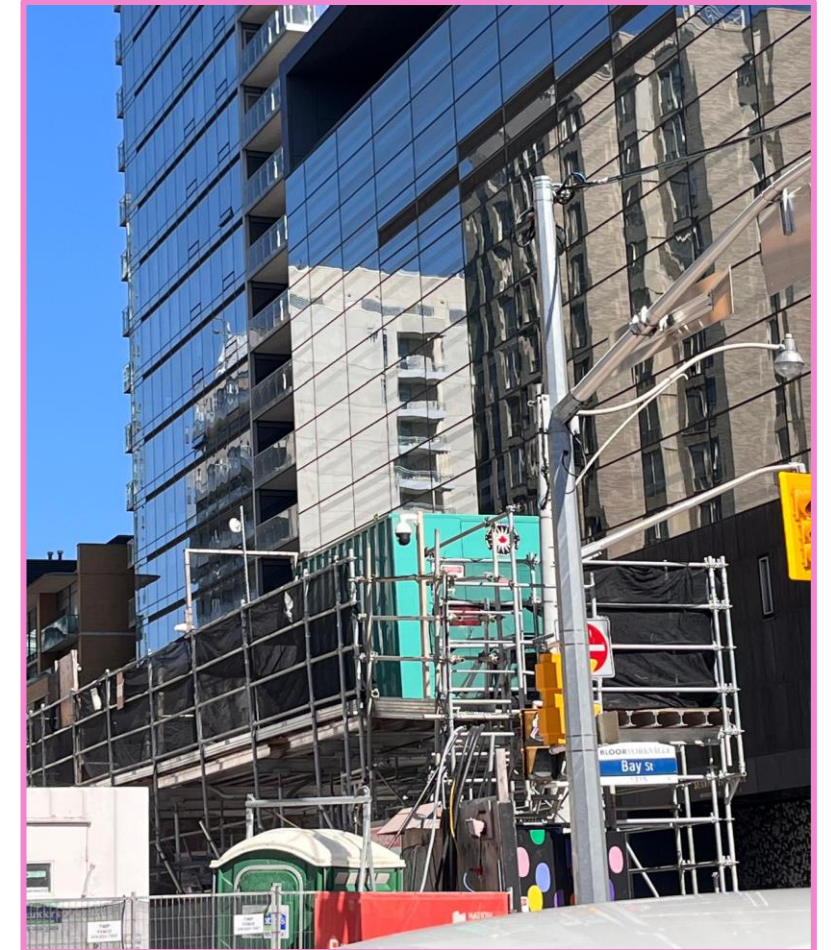
View of the future South Station entrance as of May 24, 2024.

Upcoming work

UPCOMING WORK

Platform Installation for temporary power substation - Future South Entrance

- Overhead protection is being installed along Queen Street West and Spadina Avenue, creating a covered pedestrian walkway.
- A power substation will be placed on top of it. The power substation replaces the use of generators on-site.
- Work is expected to start in mid-June, with completion by the end of June 2024.
- Toronto Hydro will be working to supply the power during installation. The temporary power installation will require road occupancy/lane/sidewalk closures. More detail will be provided when TH and its contractor have finalized the plan
- This work is expected to occur during weekdays, between 7 a.m. to 5 p.m.



Example of platform and substation - picture provided for example only

UPCOMING WORK

Excavation is expected to start in Summer 2024, through the beginning of 2025

- Excavation in subway construction involves the removal of soil, rock to create underground spaces for subway tunnels and public stations.
- More information will be shared during in an Excavation Virtual Open House on later this month - details to be announced.



Excavators and other heavy machinery are digging deep to build the launch shaft for the tunnel boring machine. (Metrolinx image)

Lookahead

2024 CONSTRUCTION LOOK-AHEAD

Queen-Spadina			
Time	Activity	Location	Details & Purpose
Spring / Summer 2024	Piling	North and South station entrances	Piling to ensure structural support for the future station shafts, expected to be completed in Summer 2024
Spring 2024	Hoarding Reconfiguration + Installation	North and South station entrances	Hoarding to ensure site safety, work is underway and expected to be completed in late Spring 2024
Summer 2024	Signage Installation - Phase 1	North and South station entrances	Installation of Phase 1 marketing signage expected to be completed by Summer 2024; Metrolinx and OTG are also exploring beautification opportunities for the sites (i.e. artwork)
Summer/Fall 2024 to 2025	Excavation	North and South station entrances	Initiate excavation of shafts to the station level, to provide connection with future station platforms

Estimated station substantial completion date: 2030

**dates subject to change based on unforeseen circumstances

Discussion

Community Engagement

Staying connected during construction

Construction notices and updates

- Prepared and distributed prior to new / impactful construction work; contact us to be able to the distribution list.

Monthly CLC meetings

- Regular committee meeting to discuss upcoming works and share information.
- Our next CLC will be replaced by a Virtual Open House on Excavation at the end of June.
- We welcome your feedback on meeting times - please connect!

In- person and virtual consultation with residences and businesses

- Our door is open: share feedback concerns with us.

News, progress and information shared and concerns in the Ontario Line newsletter

- Sign up for regular updates and information.

We are here for you

Metrolinx will keep the community, residents and businesses informed by providing project updates, seeking input and feedback, while addressing questions and concerns effectively and quickly.

Connect with us:

Bradley Naismith, Advisor, Community Engagement

Email OntarioLine@metrolinx.com

Telephone 24/7 @ 416-202-5100

Ontario Line e-newsletter @ Metrolinx.com/OntarioLine

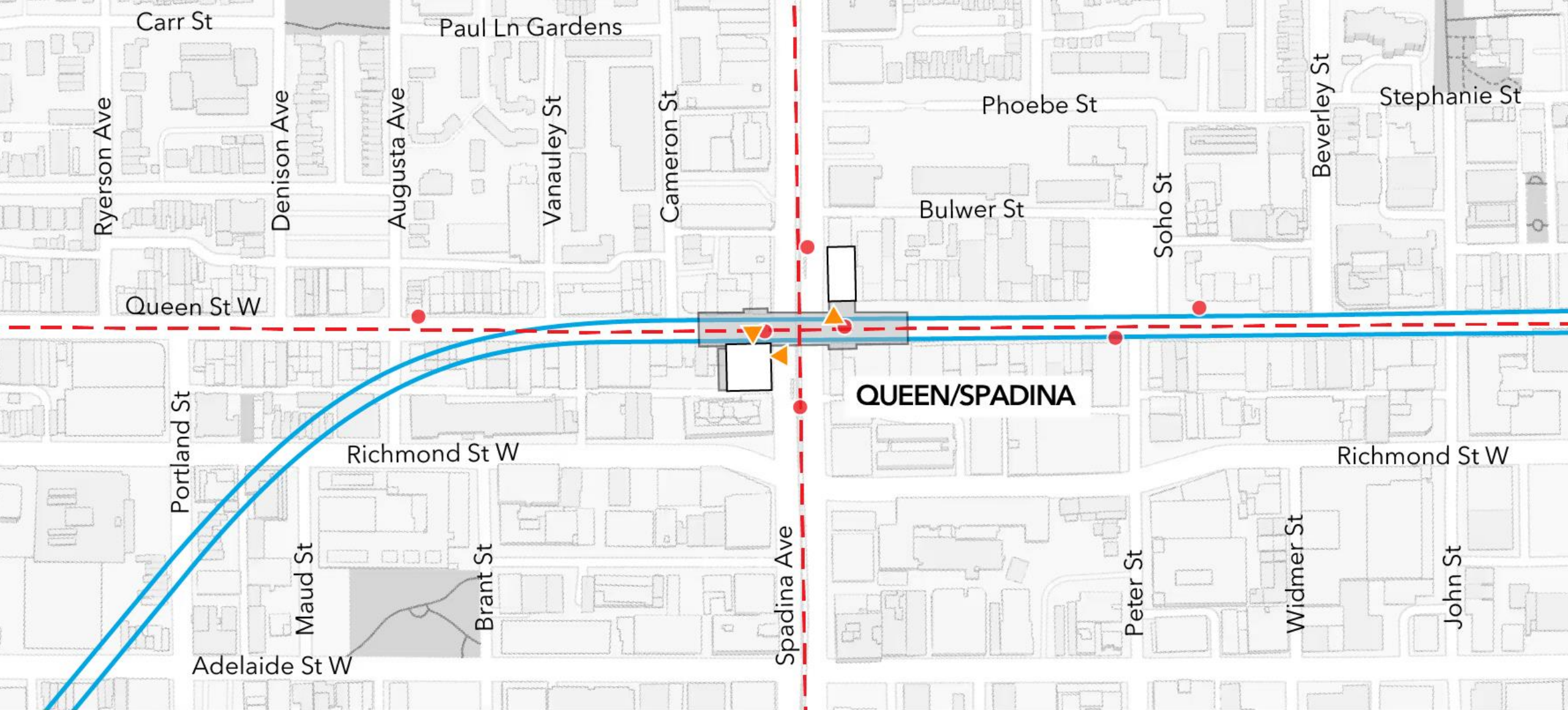
Follow us on social media:

X / Facebook / Instagram @OntarioLine



Paste the QR Code of Metrolinx
e-newsletter subscription

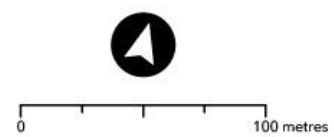




Queen/Spadina Station

- Tunnelled
- - - Streetcar Line
- Streetcar Stop
- ▲ Station Entrance
- Station Building
- Underground Station Area

Note: Heritage attributes will be conserved where possible.





Queen St W

Queen-
Spadina

QUEEN-SPADINA

4511

DO NOT PASS
OPEN DOORS

7 AM - 10 AM
3 PM - 7 PM
MON - FRI
TTC VEHICLES
EXCEPTED

Artist's rendering – subject to change. Transit-Oriented Community proposals not shown.



Artist's rendering – subject to change. Transit-Oriented Community proposals not shown.