

# UPDATED: Commencement of Ontario Line construction at Ordnance Triangle Park

**Expected start date:** As early as June 12, 2024

**Duration:** Through the end of July 2024

**Hours of work:** Weekdays (Monday-Friday), 7:30 a.m. to 5:00 p.m.

## Map of work area

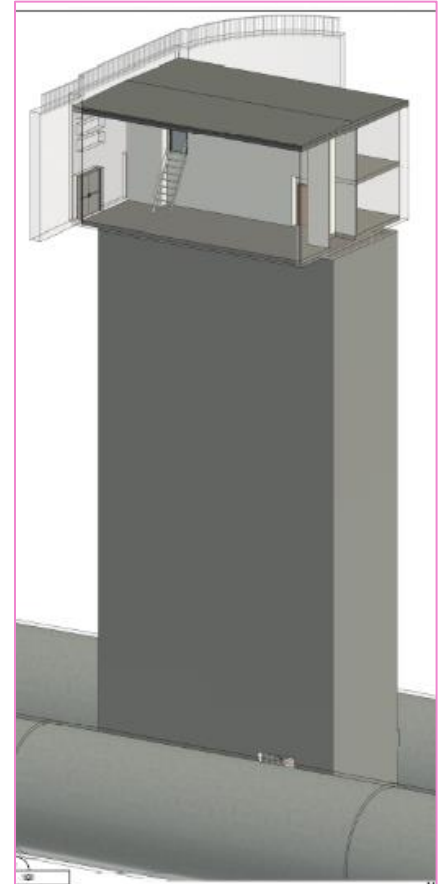


## What is happening?

- Ontario Line construction is underway across Toronto, delivering a new 15.6-kilometre subway line, with 15 stops and 40 connections to other transit, including GO train, subway, LRT streetcar and bus lines, that will make it faster and easier to travel within Toronto and beyond.
- Part of this construction involves building a dedicated emergency exit building (EEB) at the far east end of Ordnance Triangle Park, ensuring passenger safety in the event of an emergency, between Exhibition and King-Bathurst Stations. EEBs are built in between the stations when station platforms are more than approximately 760 metres apart to allow for easy evacuation. The building consists of a stairwell reaching 32 metres below ground to the subway tunnels, as well as a small exit building at surface level.
- While there will be partial Ordnance Triangle Park closures to construct the shaft and the building, the pedestrian bridges will not be impacted.
- Starting in mid-June and running through the end of 2024, the first major stages of construction at Ordnance Triangle Park will commence with Ontario Line crews will begin

the process of backfilling and compaction on site, in advance of ongoing excavation activities.

- Backfilling and compaction, as well as piling and excavation, are all processes to take place in 2024:
  - Backfill and compaction is the processes of filling in the area around a structure to ensure the materials are dense, hardpacked and suitable for excavation. Crews will complete different segments of backfill and compaction work, moving within the location identified on the map.
  - Once that is complete, long-term hoarding will be installed at the east end of the site, keeping it secure and keeping pedestrians safe.
  - Starting in late spring, secant piles and capping beams will be installed at the excavation site. These techniques ensure the ground is secure, as the EEB shaft is constructed.
- No impacts to pedestrian routes or traffic will take place for this work; equipment will utilize Metrolinx-owned access passage on the north-side of the park for entry and exit. Additional notices and public engagement will take place in advance of the next phases of construction to keep you informed at the Ontario Line progresses.



*Diagram of the EEB structure*

## What to expect

- The backfill and compaction work is scheduled to begin as early as June 12, 2024, and anticipated to be completed within 7 weeks of commencement.
- Work will take place during weekdays, (Monday-Friday), between 7:30 a.m. and 5:00 p.m.
- Crews are expected to be onsite prior to 7 a.m. to set up equipment. Crews will take measures to minimize noise impacts wherever possible.
- Area residents and businesses can expect to hear noise from work equipment, specifically excavators, backhoes, compaction rollers, boom trucks, concrete trucks, and dump trucks.
- The east end of the park will remain closed during the work period. The areas will be returned to public use upon completion of the monitoring device installation.



*Example of a compaction roller*

## About the Ontario Line

- 15.6-kilometre subway line that will make it faster and easier to travel within Toronto and beyond.
- 15 stops and more than 40 connections to other transit, including GO train, subway, LRT, streetcar, and bus lines.
- Less than 30 minutes from one end of the line to the other.
- 28,000 fewer car trips each day.

### Contact us:

Call us 24/7 at: [416-202-5100](tel:416-202-5100)  
Write to us at: [ontarioline@metrolinx.com](mailto:ontarioline@metrolinx.com)  
Find us on X, Facebook, and Instagram:  
[@ontarioline](#)  
Visit the website:  
[www.metrolinx.com/ontarioline](http://www.metrolinx.com/ontarioline)

### Visit our community offices:

**770 Queen Street East (near Queen & Broadview)**

General hours:  
Mondays, Tuesdays, and Fridays: 9:00 a.m. to 5:00 p.m.  
Wednesdays and Thursdays: 10:00 a.m. to 6:00 p.m.

### Thorncliffe Park:

East York Town Centre  
45 Overlea Blvd., Toronto, ON M4H 1C3  
Unit 153 (across from the Rogers store)

General hours:  
Monday – Friday, 9 a.m. – 5 p.m.