

UPDATE: Installation of utility monitoring devices on Queen Street West and University Avenue

Expected start date: As early as June 12, 2024

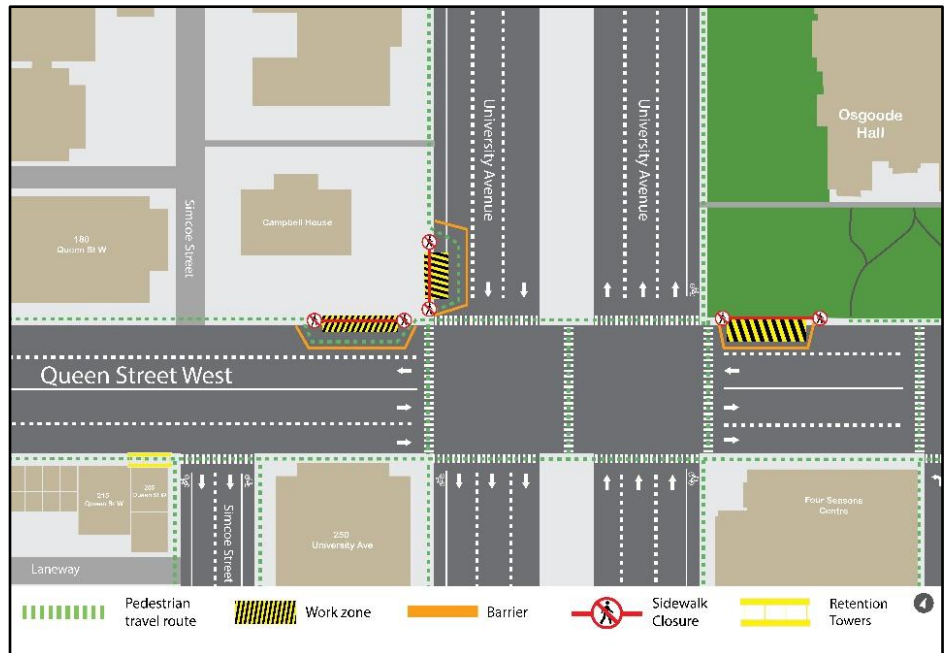
Expected duration: Approximately two (2) weeks

Hours of work: Weekdays (Monday-Friday), Nighttime 9:00 p.m. to 5:00 a.m.

Map of Work Area: Queen Street West, University Avenue

What is happening?

- Crews are conducting work to investigate utilities on **Queen Street West**, and **University Avenue**, as indicated in the areas shown in yellow on the map.
- Underground monitoring devices will be installed in the identified locations to investigate utilities and ground conditions in the area to prepare for the future construction of Ontario Line subway tunnels and Osgoode station.
- Work crews will occasionally return to the work zones to perform maintenance on these devices in the future.
- Crews will complete each segment of work independently, moving within the various locations identified on the map. Intermittent closures of sidewalks and traffic lanes around active work zones can be expected.



What to expect

- The work is scheduled to begin as early as June 12, 2024, and is expected to be completed within two (2) weeks.
- Work will take place on weekdays, (Monday-Friday), between 9:00 p.m. to 5:00 a.m., however crews may be onsite prior to 9:00 p.m. to set up equipment.
- Area residents and businesses can expect to hear noise from work equipment, specifically hydrovac trucks or drills as required to assess underground utilities and ground conditions. Crews will take measures to minimize noise impacts wherever possible.
- All closures for work are temporary and intermittent; areas will only be closed while crews are surveying the specific areas. The areas will be returned to public use upon completion of the monitoring device installation.

Queen Street West intermittent partial closures (as noted in the map above):

- Some sidewalk closures will be in place on Queen Street West during active work.
- Pedestrian passage will be maintained with the use of barriers to separate pedestrians from active work zones, where sidewalk closure is required.
- Signage will be posted advising of restrictions.

University Avenue intermittent partial closures (as noted in the map above):

- Pedestrian access will be maintained with the use of barriers to separate pedestrians from live traffic and active work zones.
- Signage will be posted advising of restrictions.

Note: Access may resume prior to 5:00 a.m. if works are completed ahead of schedule.

- Transit services will be maintained.
- After each work shift, each area will be securely covered and marked for safety until workers return or the work is complete. The areas will be returned to public after completion of the monitoring device installation.
- All the necessary construction permits have been obtained.
- Work may be postponed or rescheduled due to unforeseen circumstances.
- Crews will return to the work zones in the future to perform maintenance on installed devices.
- For more information about upcoming station work please see [metrolinx.com/Ontario](https://www.metrolinx.com/Ontario) line or sign up for the e-newsletter.

About the Ontario Line

- 15.6-kilometre subway line that will make it faster and easier to travel within Toronto and beyond.
- 15 stops and more than 40 connections to other transit, including GO train, subway, LRT, streetcar and bus lines.
- Less than 30 minutes from one end of the line to the other.
- 28,000 fewer car trips each day.

Contact us:

Call us 24/7 at: [416-202-5100](tel:416-202-5100)

Write to us at: ontarioline@metrolinx.com

Find us on X, Facebook, and Instagram: [@ontarioline](https://www.instagram.com/ontarioline)

Visit the website: www.metrolinx.com/ontarioline

Visit our community offices:

770 Queen Street East (near Queen & Broadview)

General hours:

Mondays, Tuesdays, and Fridays: 9:00 a.m. to 5:00 p.m.

Wednesdays and Thursdays: 10:00 a.m. to 6:00 p.m.

Thornccliffe Park:

East York Town Centre

45 Overlea Blvd., Toronto, ON M4H 1C3

Unit 153 (across from the Rogers store)

General hours:

Monday - Friday, 9 a.m. - 5 p.m.

Disponible en français sur demande. Si vous êtes intéressé, veuillez envoyer un courriel à OntarioLine@metrolinx.com

