

Ontario Line

# King-Bathurst Station Construction Liaison Committee

June 13, 2024

 METROLINX



# Agenda

## Welcome

- Introductions
- Land Acknowledgment

## Presentation

- Construction Updates
- Upcoming Work
- We Are Here For You

## Feedback and Discussion (30 Minutes)



# Land Acknowledgment

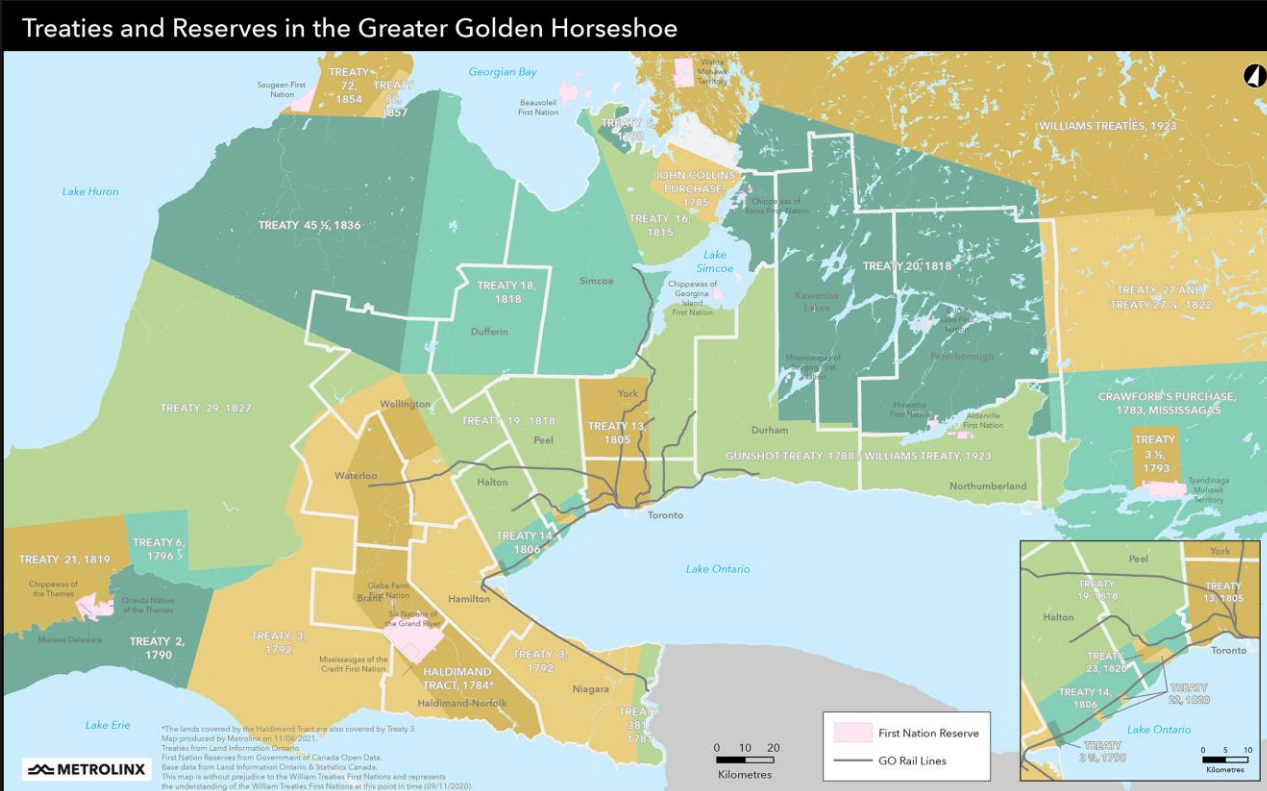
Let us take a moment to acknowledge we are on lands that have been, and continue to be, home to many Indigenous Peoples including the Anishnabeg, the Haudenosaunee and the Huron-Wendat peoples.

We are all Treaty people. Many of us have come here as settlers, as immigrants or involuntarily as part of the trans-Atlantic slave trade, in this generation, or generations past.

We acknowledge the historic and continued impacts of colonization and the need to work towards meaningful reconciliation with the original caretakers of this land.

We acknowledge that Metrolinx operates on territories and lands covered by many treaties that affirm and value the rights of Indigenous communities, Nations and Peoples.

We understand the importance of working towards reconciliation with the original caretakers of this land. At Metrolinx, we will conduct business in a manner that is built on a foundation of trust, respect and collaboration.



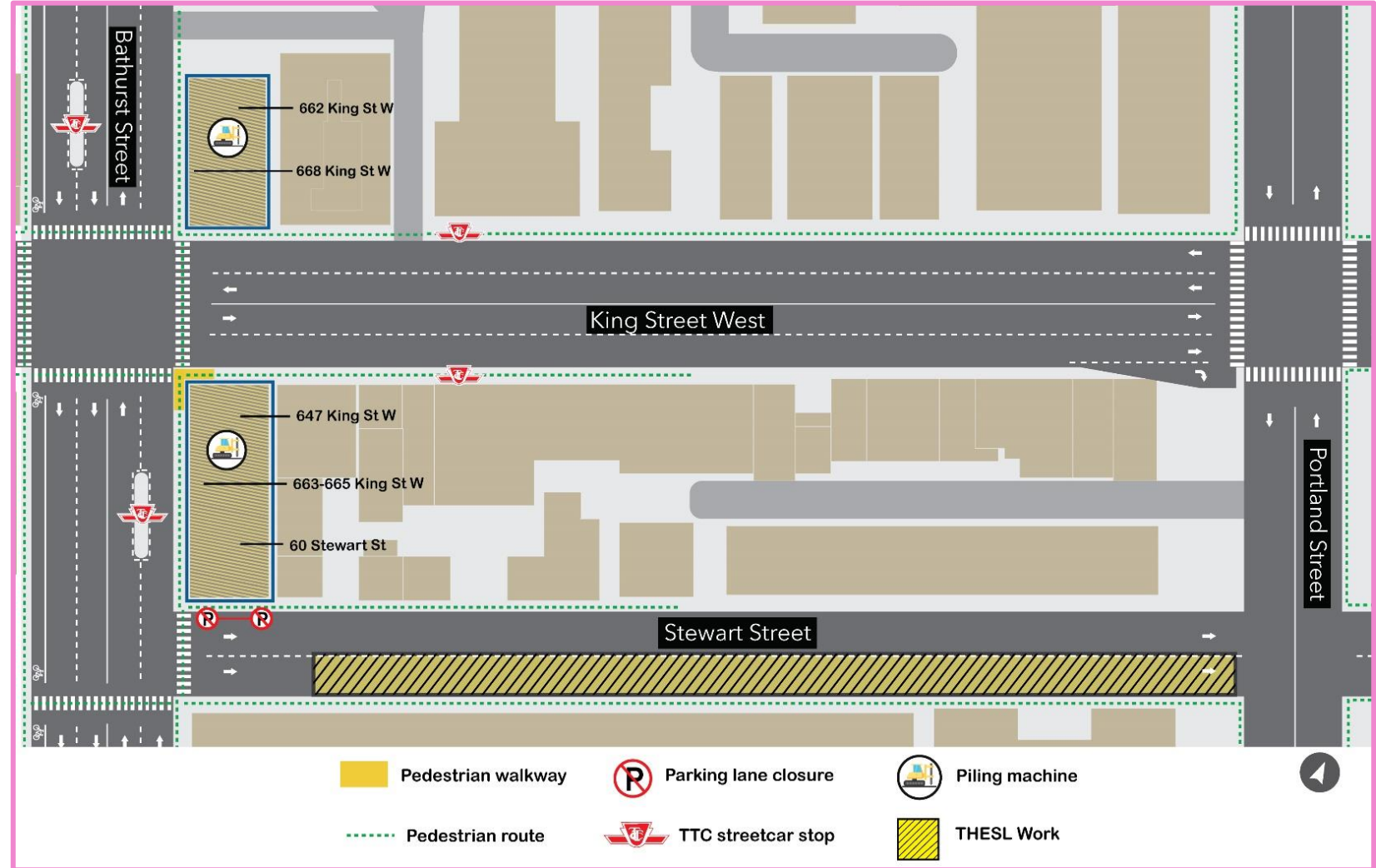
Ontario Line

# Construction Updates

# 1

## COMPLETED WORKS: TORONTO HYDRO UTILITIES INSTALLATION ON STEWART STREET

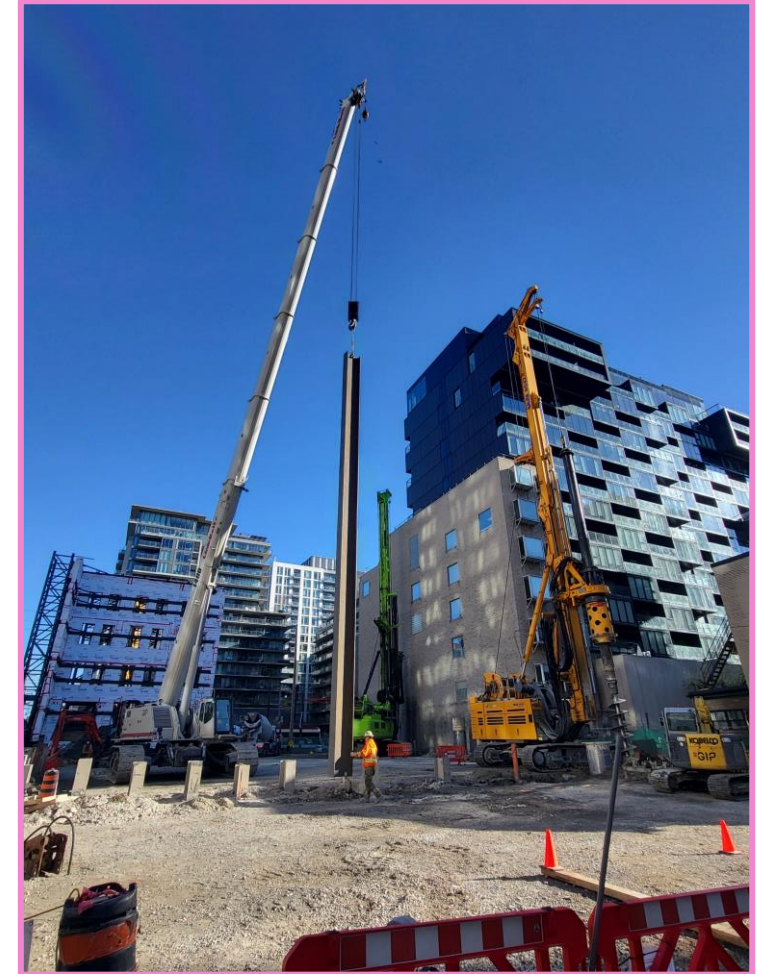
- To alleviate the need for noisy generators on-site, Toronto Hydro installed a new conduit along Stewart Street. This source will provide power during construction.
- Toronto Hydro crews had set up a work zone on the south curb lane. They will now return to connect the new infrastructure to power the site.



## 2

### CURRENT WORKS: ONGOING PILE DRILLING TO SUPPORT FUTURE EXCAVATION

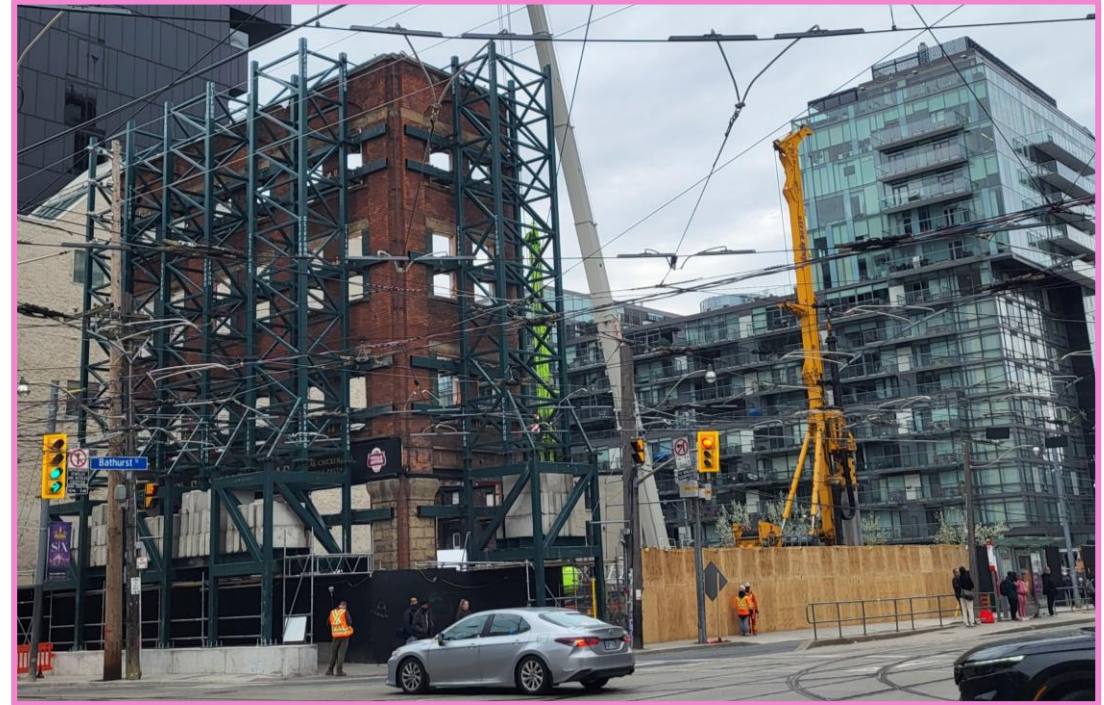
- Pile drilling to enable upcoming station excavation at King-Bathurst is occurring through early summer. In addition to the new station piles, crews are also installing piles for the future Transit-Oriented Community (TOC), and support for the acoustic shelter. To ensure this work is done as soon as possible, new hours will be implemented for piling, from 7:00 a.m. to 11:00 p.m.
- Secant piles act as foundations for excavation work, and supports structural systems, ensuring stability for infrastructures and buildings during the construction of stations, until the permanent concrete structure is completed.
- **On the north site:**
  - 86 piles have been completed, for 100% of the support of excavation work.
  - 27 piles have been completed, for 95% of the TOC piles work.
  - Acoustic shelter piles to commence the week of June 17.
- **On the south site:**
  - 142 piles have been installed, for 75% of the support of excavation work.
  - TOC piles to commence soon.



*Ongoing pile drilling machine at King-Bathurst.*

### 3 CURRENT WORKS: CONSTRUCTION HOARDING INSTALLATION

- Construction hoarding and long-term fencing is being installed at both south and north sites of King-Bathurst.
- Once installation is complete at both sites, the available hoarding and fencing spaces will be covered in Metrolinx branded messaging and community art to ensure a safe, clean and esthetically pleasing construction site for the community.
- Hoarding and fencing installation is taking place through June, with artwork being applied by the summer.
- Hoarding helps mitigate dust, debris and noise from the sites and keeps construction activities contained.



*Hoarding installation taking place at the south site of King-Bathurst.*

## 4 UPCOMING WORKS: NORTH SITE OVERHEAD CRANE INSTALLATION

- At the north site, an overhead crane will be delivered in early July.
- This type of crane can move back and forth across the construction site, allowing it to load materials and deliver them to precise locations within the station's small footprint. The limited space for the site does not allow for a standard tower crane and the crane will remain in place throughout the excavation. Once delivered and assembled the crane will be housed within the acoustic shelter and sit above the future excavation shaft.
- The overhead crane will be used to remove soil throughout the excavation down to the tunnel level. It will also allow the team to lower and remove materials into the shaft.



*Example of an overhead crane; a mobile crane to help hoisting operations within the long-term acoustic shelter.*



# 5

## UPCOMING WORK: ACCOUSTIC SHELTER INSTALLATION

- At the north site, an acoustic shelter will be installed this summer, including ventilation and lighting installation.
- The shelter will be built by a mobile crane on-site.
- Acoustic shelters are large, steel frame supported structures, acting as protection from the elements for excavation work.
- The shelter will reduce noise and contain the works within the site that will become the access point for the future cavern.

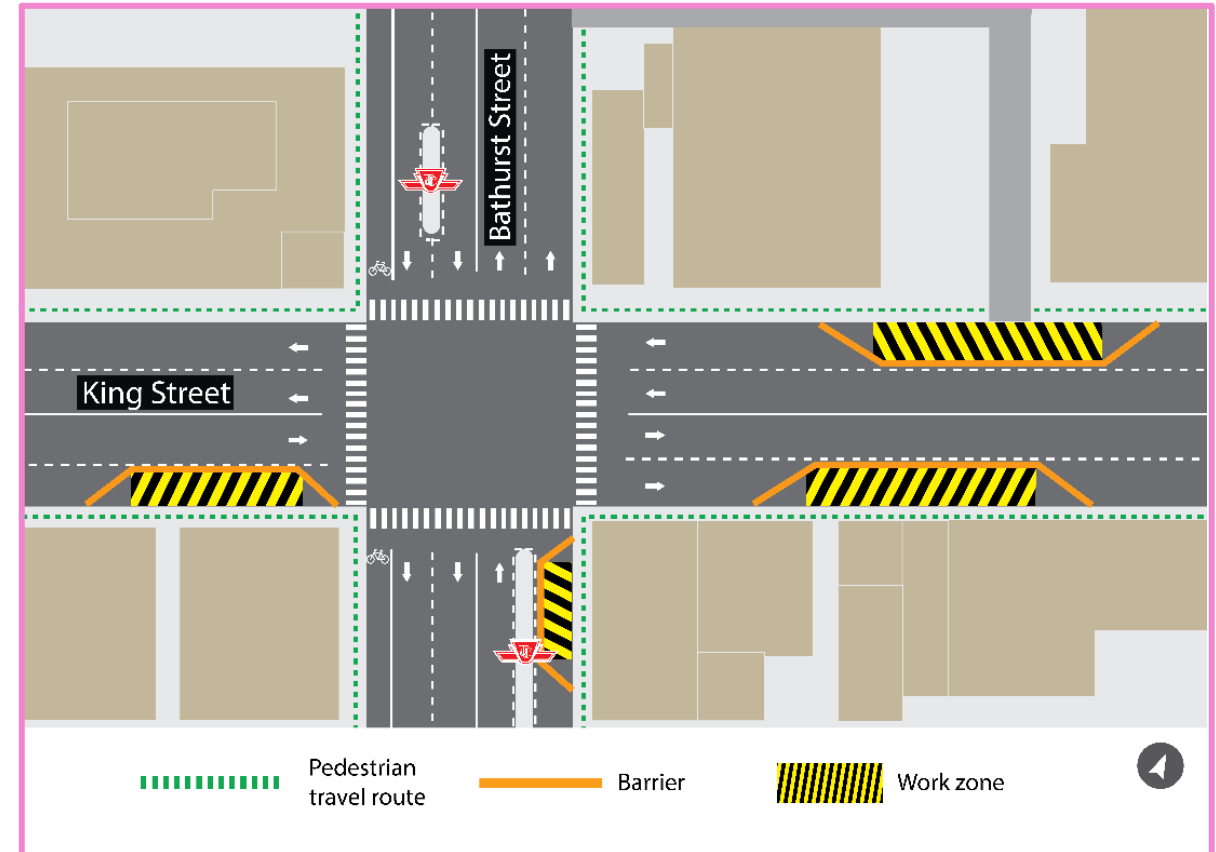


*Example of an acoustic shelter tent, to protect from noise, dust and weather during excavation.*

## 6

## UPCOMING WORKS: MONITORING DEVICE INSTALLATION

- To prepare for and support ongoing station construction, utility monitoring devices will be installed around the intersection of King Street West and Bathurst Street, starting in late June.
- Hydrovac trucks will be used in the daytime only, to reduce the amount of overnight noise. Drilling exercised will over at night.
- Monitoring device installations will move around the intersection, in the identified yellow work zones, one at a time.
- Installations and lane occupancies will not occur simultaneously. Multiple lanes or sidewalks will not be blocked, as crews work on individual locations before re-opening and moving to the next location.

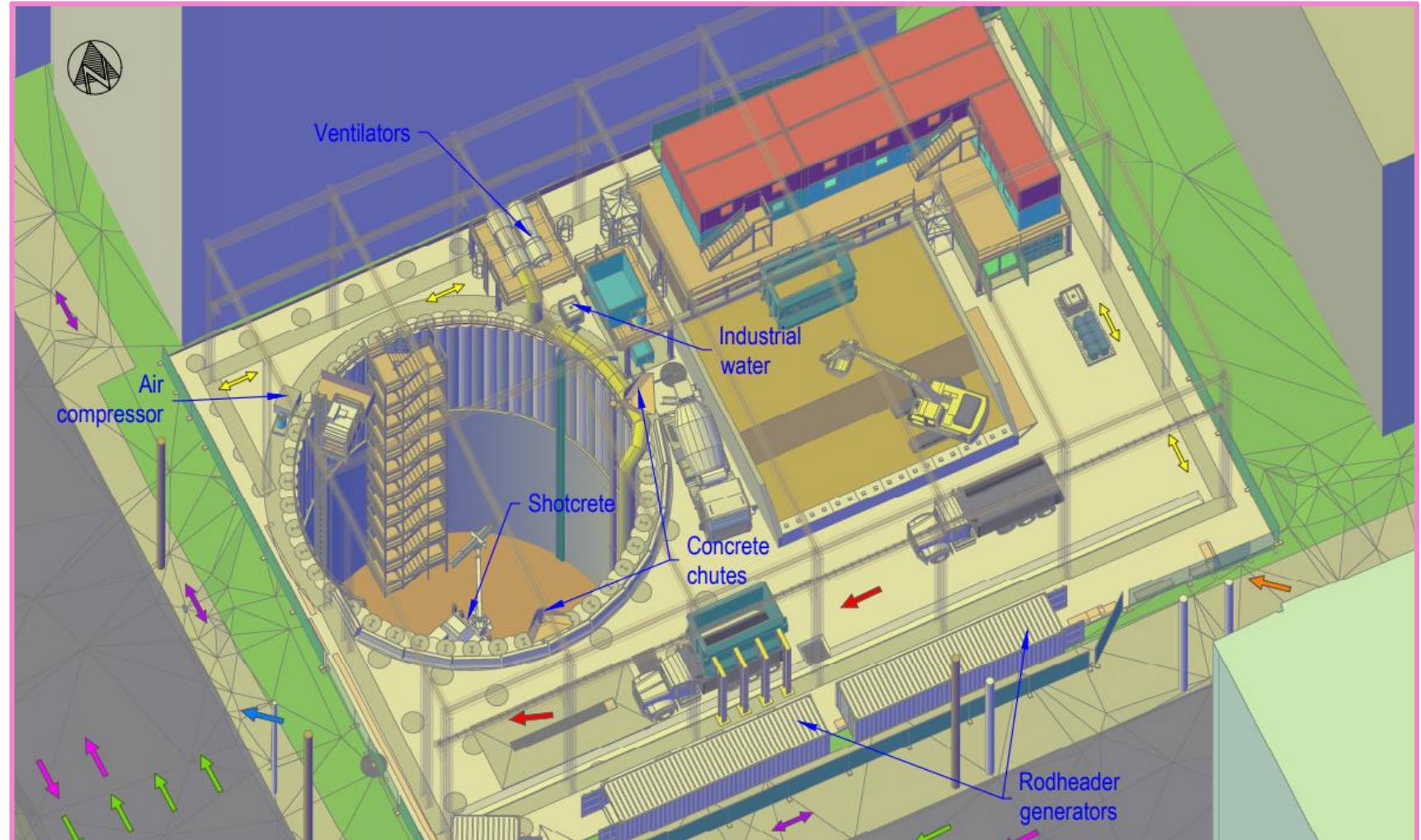


*Example of an acoustic shelter tent, to protect from noise, dust and weather during excavation.*

## 7

## UPCOMING WORKS: NORTH SITE EXCAVATION &amp; LAYOUT

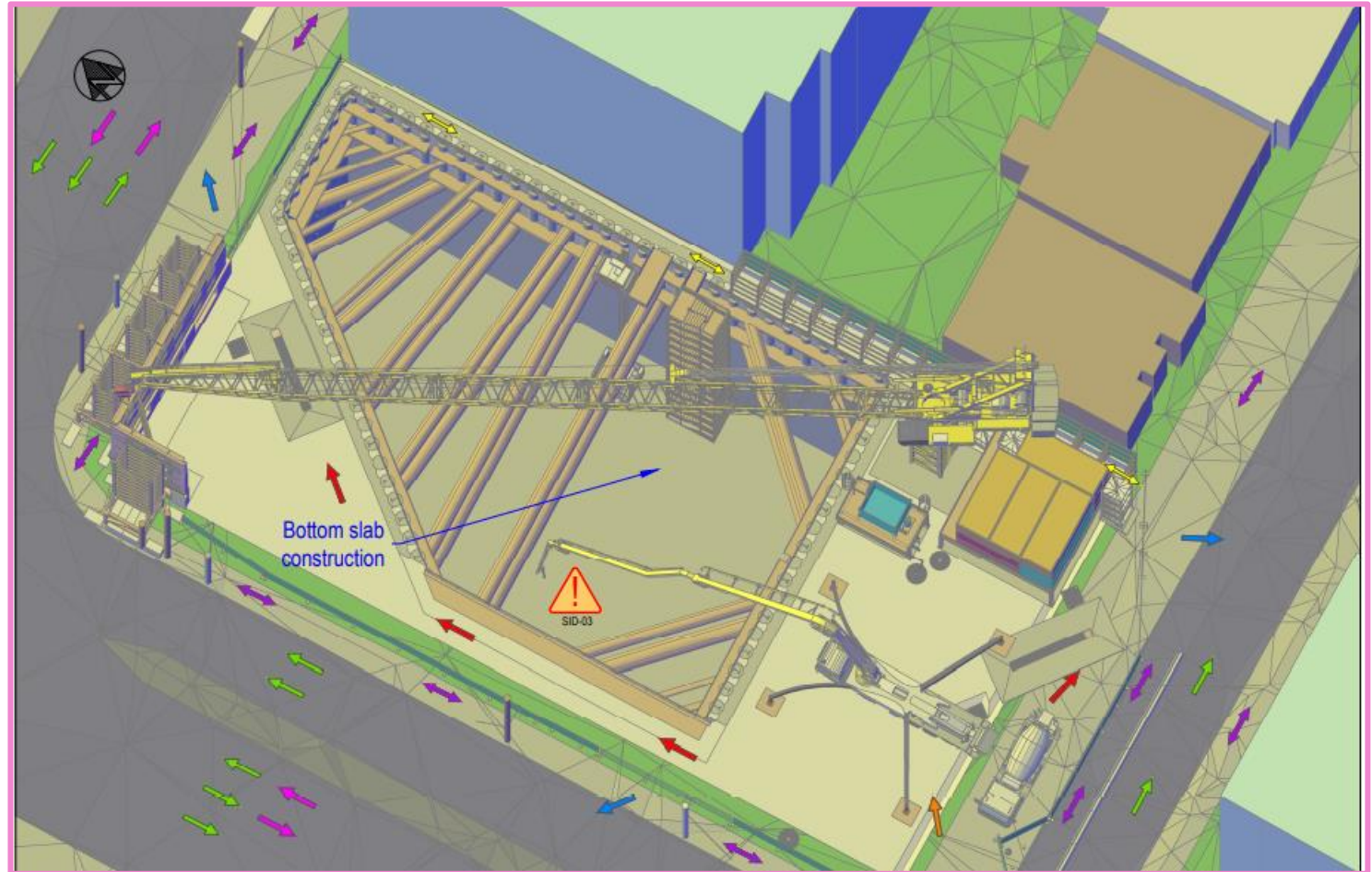
- The diagram illustrates the location of the future excavation portal on the north site of King-Bathurst.
- This excavation will commence upon the completion of the shelter.
- The excavation will create a future space for station construction and access to the Ontario Line platform level.
- An acoustic barrier will be added to the north site.



## 8

## UPCOMING WORKS: SOUTH SITE EXCAVATION

- The diagram illustrates the location of the future excavation portal on the south site of King-Bathurst.
- This excavation will commence upon the completion of station piling.
- The excavation will create a future space for station construction and access to the Ontario Line platform level.
- A special community virtual open house will be held in the coming weeks to discuss the excavation process.



*Installation of long-term hoarding on the south site.*

## 9

## WHAT TO EXPECT WITH EXCAVATION AND EQUIPMENT

During excavation work, community members can expect:

- During excavation, residents can hear daytime noise from excavating equipment, loading of excavated material at both north and south sites.
- Equipment used during this excavation includes cranes, excavators, dump trucks, concrete pumps, and steel beam delivery trucks
- Several trucks entering and leaving worksites daily, following a specified route.



*Excavated material being loaded into a dump truck.*

During excavation work, community members can expect:

- Several trucks entering and leaving worksites daily, following a specified route. Traffic safety support will be provided by designated flag persons as needed.
- Trucks will use fixed routes to access both sites, moving north on Bathurst Street to enter the area, and exiting via Adelaide Street or Stewart Street toward Spadina Avenue, and the Gardiner Expressway.
- Haul routes are monitored and subject to coordination with the City of Toronto.



## Major construction milestones to propel the Ontario Line subway forward, at King-Bathurst.

Time	Activity	Details & Purpose
<b>Spring</b>	Ongoing piling	Piling work is underway around the perimeter of the future station & ensures structural support before heavy excavation begins.
	Long-term hoarding installation	Structures to define the long-term construction zone during tunnel and station works will be installed to assist with site safety, noise mitigation and site protection.
<b>Spring/ Summer</b>	Acoustic shelter installation	A structure to be installed over the excavation sites, to protect from noise and dust.
	Excavation	Soils will be excavated to create shafts from the street level to the station level 40m underground.
<b>Fall/ Winter 2024</b>	Station site entry preparation	Excavation of the station cavern to connect the station shaft and the tunnels.

Ontario Line

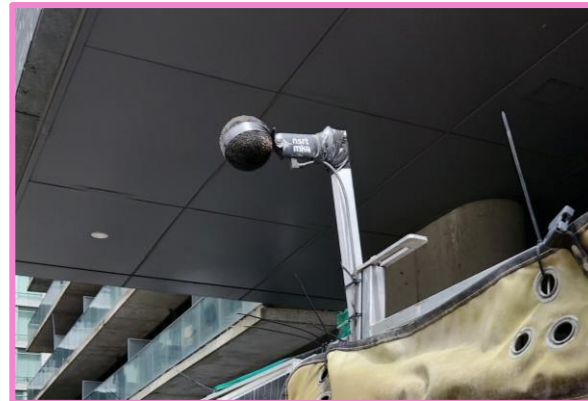
# Reducing Impacts to the Community



- Noise and vibration monitoring devices are placed on site for active tracking of impact to ambient noise levels.
- Site hoarding is installed where possible to help reduce noise, including sound dampening blankets and dust barriers, to reduce noise and debris in the neighbourhood.
- Installation of an acoustic shelter (early summer) to ensure excavation machinery is covered by a large-scale tent, protecting work areas during all seasons and limiting noise.
- Continuous loop truck routes, reducing need for trucks to reverse using backup alarms.
- Street sweepers and wheel cleaning are used as needed, to ensure soil and sediment is kept off city streets and sidewalks.



*Sound dampening blankets place on the inside of site hoarding.*



*Noise and vibration monitoring device.*



*Wheel cleaning shaker mat, to ensure trucks do not bring mud and soil into city streets.*

**Metrolinx will keep the community informed by providing Ontario Line updates and addressing questions and concerns effectively, and quickly.**

Connect With Us:

- Email: [OntarioLine@metrolinx.com](mailto:OntarioLine@metrolinx.com)
- Telephone 24/7: 416-202-5100
- Ontario Line e-newsletter: [Metrolinx.com/OntarioLine](https://www.metrolinx.com/OntarioLine)

Follow us on social media:

- X / Facebook / Instagram @OntarioLine

Join our monthly Construction Liaison Committees (CLC):

- Please contact [OntarioLine@metrolinx.com](mailto:OntarioLine@metrolinx.com)



*Scan the QR code for Metrolinx e-newsletter subscription*



Départs in 14 minutes

Osgoode  
Queen  
Moss Park  
Cork Town

East Harbour  
Leaside  
Gerrard  
Pape  
Cosburn

Departs  
Départ  
4 min

King-Bathurst

Departs	18:20	18:30
18:20	18:20	18:30
18:30	18:30	18:40
18:40	18:40	18:50

King-Bathurst

King-Bathurst

King-Bathurst



KING-BATHURST