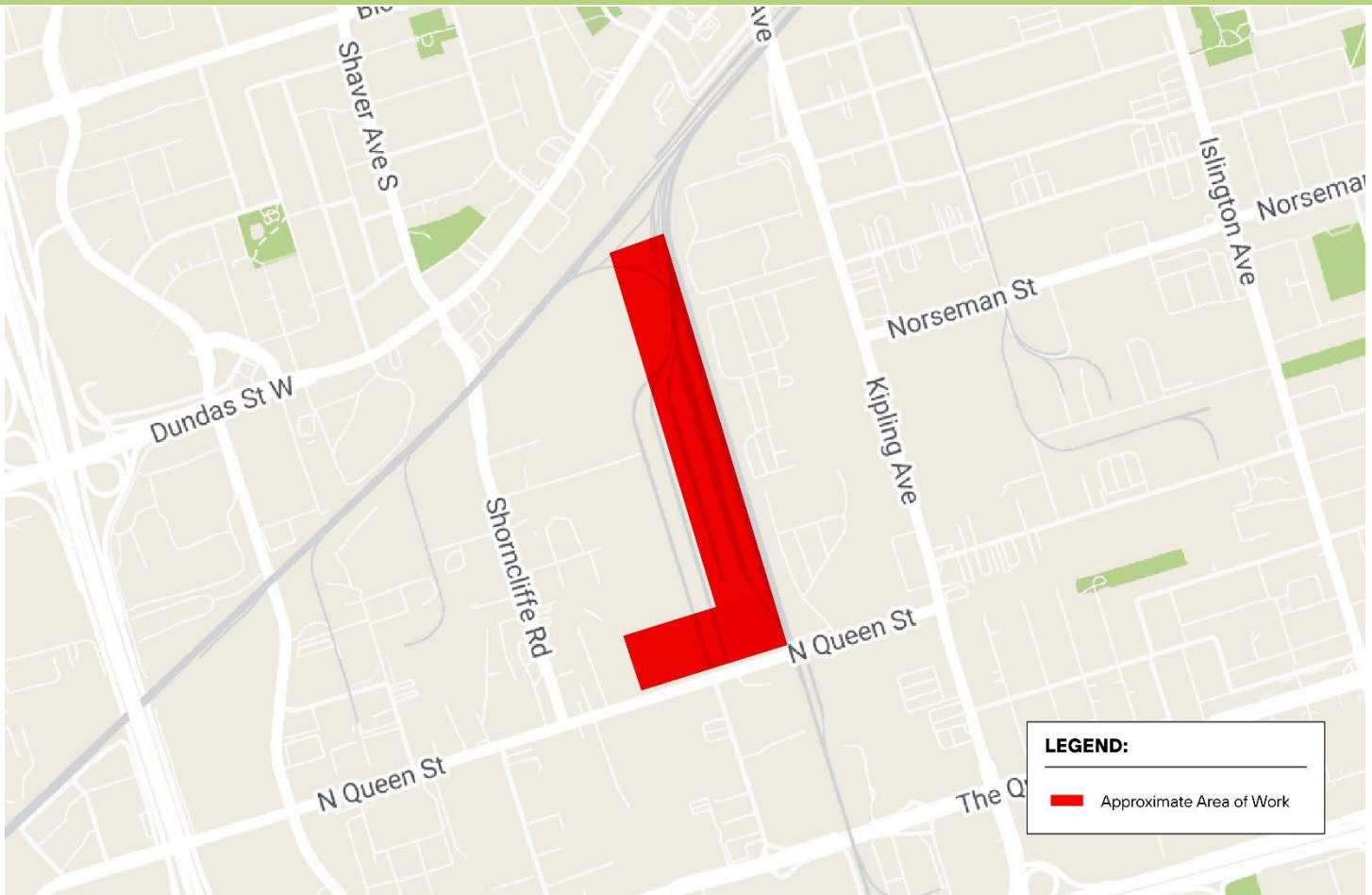


GO Expansion On-Corridor Works

Project: Tree and Vegetation Removal for Logistics Hub near the Milton Rail Corridor-July 30, 2024



Project Overview

GO service is expanding to serve you better - with more frequent service, more stations, cleaner technology, and more connections. Across the entire network, our goal is to deliver over 10,000 train trips a week - so you won't need a schedule because you know the next train will be coming soon. GO Expansion will transform the GO rail network from a commuter service into an all-day, rapid system.

What You Need to Know

Logistics hubs will serve as critical support centres for the On-Corridor Works project, which is part of the larger GO Expansion Program. They are a type of staging and laydown area that may store and receive materials, support assembly or production of infrastructure assets and play a key role in distribution of these resources via the rail corridor.

There will be multiple logistics hubs set up across the GO Network. Many logistics hubs will operate from existing rail yards, and some will be new sites. One logistics hub location is next to the Milton rail corridor, near Bloor Street West and Kipling Avenue (see map). Prior to construction at the logistics hubs, each site must be prepared. Preparatory site works are expected to begin at this hub location in June 2024.

Trees, shrubs, and vegetation will be removed from logistics hub lands to accommodate site preparation activities and prepare lands for future construction. The number of trees to be removed is the minimum amount required to safely construct each site. Removals for trees outside of Metrolinx lands will have approval from regional authorities. Tree removal and protection is carried out in accordance with regulatory requirements.

Restoration planting will be carried out in accordance with the Metrolinx Vegetation Guideline, Metrolinx works in partnership with the regional conservation authorities and follows a science-based plan for planting new trees. Learn more at www.metrolinx.com/vegetation.

WHAT TO EXPECT

- Crews will be preparing selected lands across the GO network to develop logistics hubs in support of GO Expansion.
- To facilitate site preparation activities and construction of this logistics hub, approximately 148 trees have been identified for removal.
- Crews will clear and remove designated trees and vegetation located within the logistics hub footprint along the Milton Corridor, approximately between North Queen Street and Kipling GO Station.
- Crews will use equipment that includes chainsaws, woodchippers, and heavy trucks. Any equipment left on site will be safely stored.
- Work will take place within and outside of the rail corridor. All sites will be delineated with the required controls.
- We apologize for any inconvenience and ask for your patience as we complete this critical work.

HOURS OF WORK

- Tree and vegetation removals are expected to begin as early as July 30, 2024, for up to two months.
- Work will be sequenced and may not be continuous throughout this time period.
- Work may be rescheduled due to weather conditions or unforeseen circumstances.
- Daytime working hours are scheduled whenever possible; however, some activities are required to take place overnight when trains are not in service.

TRAFFIC, PEDESTRIAN, & TRANSIT DETAILS

- No anticipated impact on traffic, pedestrians, or transit.



Scan the QR code for more information about site preparation of logistics hubs.

This notice can be translated into a different language upon request by emailing us at TorontoWest@metrolinx.com

Cet avis est disponible en français sur demande. Si vous êtes intéressé, veuillez envoyer un courriel à TorontoWest@metrolinx.com

Contact Us:

☎ Call us: 416-202-6911

✉ Write to us at: TorontoWest@metrolinx.com

🐦 Find us on Twitter [@GOExpansion](https://twitter.com/GOExpansion)

• Visit the website: <https://www.metrolinx.com/en/projects-and-programs/Lakeshore West>

• Subscribe to our e-blast: www.metrolinx.com/subscribe