

Start of Excavation at Queen-Spadina

Expected start date: Summer 2024 (North site July, South site August)

Hours of work:

- **North site:** Weekdays from 7:00 a.m. to 11:00 p.m.* and Saturday 7:00 a.m. to 5:00 p.m.
- **South site:** Weekdays from 7:00 a.m. to 11:00 p.m.* and Saturday 7:00 a.m. to 5:00 p.m.
*The constructor may not always work extended or weekend hours. Occasional overnight shifts may be required and will be notified.
- **Phase One Expected Completion:** December 2024

JOIN US FOR A QUEEN SPADINA VIRTUAL OPEN HOUSE ON JULY 3, 2024

For more information about the Ontario Line construction happening at Queen-Spadina, Metrolinx and its Ontario Line constructor, Ontario Transit Group, welcome you to a Virtual Open House on July 3, 2024, from 7:00 p.m. to 8:00 p.m. ET.

Please register at metrolinx.com/ontarioline and click on **Events** for details or scan the QR code to the right:

What is station excavation?

The support piles needed to stabilize the site have been installed. Now the team will begin to excavate the soil to a depth of 40m. As soils are removed a shaft is created to lower materials into the pit for the future Ontario Line station at Queen-Spadina.

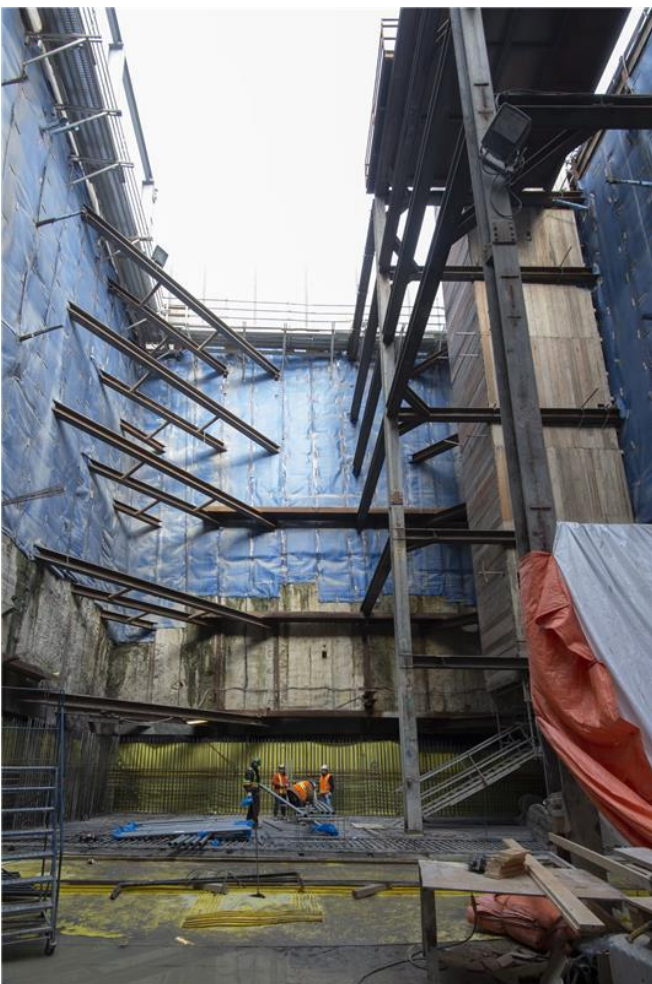


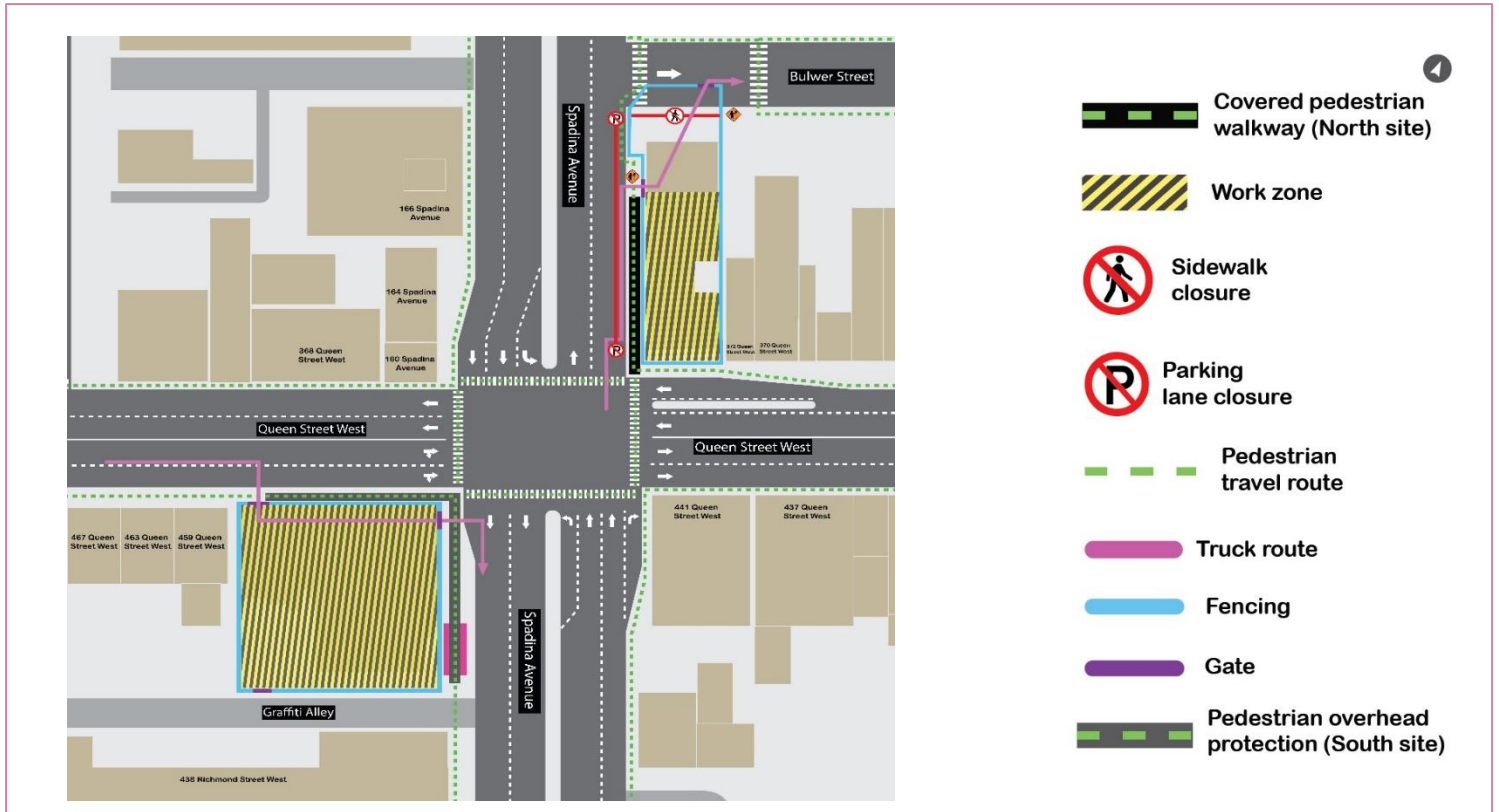
Image used for illustrative purposes only.

What to expect

- Work is expected to take place on weekdays between 7:00 a.m. and 11:00 p.m. and will vary by site.
- Additional workdays or hours may be required to allow teams to complete work, such as overnight or Saturday shifts.
- Crews are expected to be onsite prior to 7:00 a.m. to set up equipment.
- Residents will see cranes, excavators, loaders, and dump trucks on-site during this phase of work.
- Increased truck traffic entering and leaving worksites daily, following a specified route (refer to graphic below).
- There will be construction noise from the use of excavators and loaders for the removal of spoils.
- To reduce impacts to residents and businesses in the area, mitigations are in place including air quality, noise and vibration monitoring, site hoarding, additional paved areas, sprinkler systems and mud mats for dust suppression, and no overnight works. Mitigation efforts vary from site to site.

Access Points

To maintain site safety, the site access points will be staffed by traffic control persons. This will enable pedestrians and cyclists to safely pass and allow trucks to enter the site or merge into traffic when exiting the site.



Truck Routes

Primary truck routing is illustrated in purple

North Site

- Trucks will enter via Queen Street West and Spadina Avenue northbound and exit through the gate on Bulwer Street.
- The parking lane along the Spadina Avenue will remain closed.
- The south sidewalk along the work zone, from Spadina Avenue along Bulwer Street will remain closed to ensure pedestrian safety access.

South Site

- Trucks will enter via Queen Street West (eastbound) and exit via one of two routes. Through the gate at the northeast side of the work zone on Spadina Avenue or through the gate at the south end of the work zone onto Graffiti Alley and then out to Spadina Avenue, travelling south.

About the Ontario Line

- 15.6-kilometre subway line that will make it faster and easier to travel within Toronto and beyond.
- 15 stops and more than 40 connections to other transit, including GO train, subway, LRT, streetcar, and bus lines.
- Less than 30 minutes from one end of the line to the other.
- 28,000 fewer car trips each day.

Contact us:

Call us 24/7 at: [416-202-5100](tel:416-202-5100)

Write to us at: ontarioline@metrolinx.com

Find us on X, Facebook, and Instagram:

[@ontarioline](#)

Visit the website:

www.metrolinx.com/ontarioline

Visit our community offices:

770 Queen Street East (near Queen & Broadview)

General hours:

Mondays, Tuesdays, and Fridays: 9:00 a.m. to 5:00 p.m.

Wednesdays and Thursdays: 10:00 a.m. to 6:00 p.m.

Thornclyffe Park:

East York Town Centre

45 Overlea Blvd., Toronto, ON M4H 1C3
Unit 153 (across from the Rogers store)

General hours:

Monday - Friday, 9 a.m. - 5 p.m.