

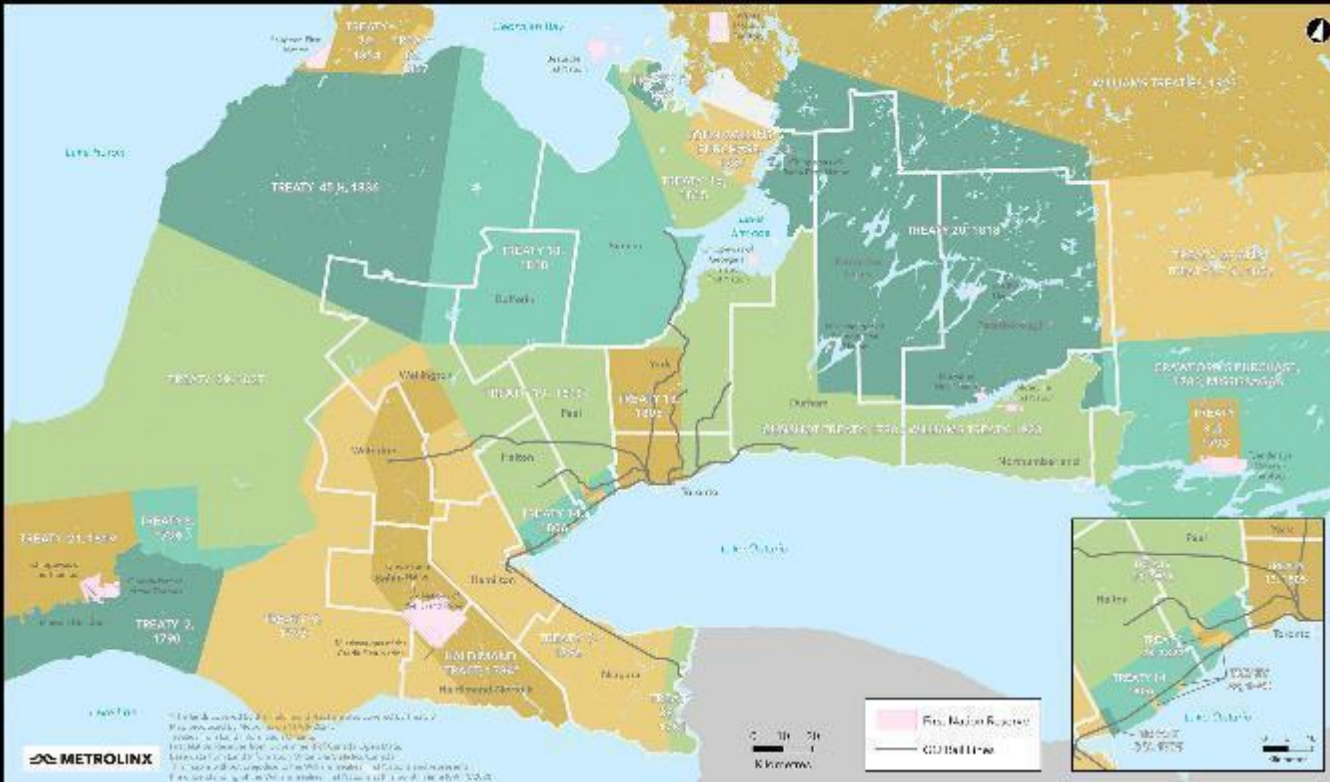


**The Ontario Line
Lakeshore East Joint Corridor
Early Works
Construction Liaison Committee**

June 20, 2024

LAND ACKNOWLEDGMENT

Treaties and Reserves in the Greater Golden Horseshoe



Let us take a moment to acknowledge we are on lands that have been, and continue to be, home to many Indigenous Peoples including the Anishnabeg, the Haudenosaunee and the Huron-Wendat peoples.

We are all Treaty people. Many of us have come here as settlers, as immigrants or involuntarily as part of the trans-Atlantic slave trade, in this generation, or generations past.

We acknowledge the historic and continued impacts of colonization and the need to work towards meaningful reconciliation with the original caretakers of this land.

We acknowledge that Metrolinx operates on territories and lands covered by many treaties that affirm and value the rights of Indigenous communities, Nations and Peoples.

We understand the importance of working towards reconciliation with the original caretakers of this land. At Metrolinx, we will conduct business in a manner that is built on a foundation of trust, respect and collaboration.

Agenda

1. Welcome:

- Land Acknowledgement
- Safety Moment
- Action Items
- Complaints and Issues Tracker

2. Noise and Vibration Update - May 2024

3. Construction Updates

- Bridges update
- In-Corridor Work
- 2024 lookahead
- Eastern Avenue Bridge

4. Discussion/Next CLC



May 29, 2024
Retaining wall and bridge work

Safety Moment - Extreme heat

Know the signs of heat illness

- Everyone is susceptible to extreme heat.
- Signs of heat illness includes swelling, rashes, cramps, fainting, heat exhaustion.
- Heat stroke is the most serious heat-related illness. If you or someone you are looking after has a high body temperature, is confused, has stopped sweating, or is unconscious, call 911 immediately.
- Move an affected person to a cool place, apply cold water to large areas of the skin and fan the person as much as possible.



May CLC Action Items - Completed

#	Action	Response	Status
1	Dufferin Construction to investigate forklift travelling on Booth Ave. at 5:30 pm on May 15.	Dufferin has issued a reminder to all staff and subcontractors to not drive construction equipment on Booth Ave.	Completed
2	Dufferin Construction to confirm if noise mitigation was installed at Galt Ave. during the major track closure in May, and if a noise barrier can be installed on the fencing at Galt Ave. (specifically white building at corner of laneway).	A noise barrier was in place during the overnight work at Galt Ave. There was not enough space to keep the noise barrier installed during the major track closure (MTC), however work during the MTC occurred in the daytime. Installation of the permanent noise barrier is ongoing and will be completed by mid-July. No night work will be planned at Galt Ave. until the permanent noise barrier is installed.	Completed
3	Dufferin Construction to confirm if signage audit can be performed at Queen St E to de-clutter the signage.	Construction signage is reviewed by Dufferin daily. All current signage is required to comply with the approved Traffic Control Plan. Additional pedestrian safety and Open for Business signs have been installed at the request of the BIA.	Completed
4	Metrolinx to review the possibility of a lookahead update to provide a timeline on what's coming up on the west/north side of the Rail Corridor.	Metrolinx will increase the scope of the lookahead to include the West/North side of the rail corridor when construction activities are confirmed. To date, the lookahead includes vegetation removal and construction of the access roads on the West side of the corridor.	Completed
5	Metrolinx to provide contact for East Harbour to the LSE CAC.	Metrolinx has provided the LSE CAC with the appropriate contact for the Eastern Ave bridge work.	Completed

May CLC Action Items - Completed

#	Action	Response	Status
6	Metrolinx to respond to concerns/action items sent from the Riverside BIA.	Action items/concerns from the Riverside BIA have been responded to	Completed
7	Metrolinx and the BIA to coordinate a walkabout to discuss BIA assets at Queen St. E. bridge.	Metrolinx, Dufferin Construction and the City completed a BIA asset walk on Monday, June 3rd and have ongoing discussions with the BIA about what assets will be removed, preserved and re-instated.	Completed
8	Metrolinx and Dufferin Construction to explore the installation of a temporary noise barrier at the end of First Avenue or along the top of the rail corridor since the trees have been removed from that area	A noise barrier will be installed around the laydown area at the end of First Avenue. Metrolinx is working with the Contractor to determine the timeline for the installation of the barrier and will keep the CLC membership updated.	Completed

April/May CLC Action Items - Pending

#	Action	Response	Status
1	Metrolinx to provide an update on Jimmie Simpson Park banner.	Metrolinx is working with internal creative services to develop art for the Jimmie Simpson Park banner.	Pending
2	Metrolinx to confirm if the BIA mural can be stored at the Thackeray yard.	Metrolinx is continuing to investigate hoarding plans for the north side of the rail corridor to confirm if there is a feasible location to install the BIA mural. Metrolinx will continue to keep the Riverside BIA informed on possible options.	Pending
3	Metrolinx to hold an in-person meeting on bike safety at the Community Office.	Metrolinx will hold a bike safety walk on June 24 with local bike safety advocates, BIAs, and Dufferin Construction to explore feasible adjustments (e.g., signage) around the Queen St E, Dundas St E, and Logan Ave bridges to improve the current traffic staging for cyclists.	Pending
4	Metrolinx to coordinate with IO to determine presence at future meetings.	Metrolinx is continuing to have ongoing conversations with IO.	Pending
5	Metrolinx to provide an update on the tree removals planned for the north side of the rail corridor. Specifically, residents want clarity on what trees are being removed and how many.	Details are still being finalized for the arborist report on the West side of the corridor. Once the report is finalized and sent to Metrolinx, a summary will be provided to the CLC membership.	Pending

April/ May CLC Action Items - Pending

#	Action	Response	Status
6	Metrolinx to confirm restoration plans for the Degrassi historical plaque. *ask from Riverside BIA	Metrolinx is coordinating restoration plans with Heritage Toronto and will keep the CLC members updated.	Pending
7	May: Metrolinx will follow up with a discussion on community involvement on the work schedule for the west side of the corridor.	Discussions about the construction schedule on the west side of the corridor have not started. Metrolinx will reach out to the Community once these conversations are initiated.	Pending
8	May: Metrolinx and Dufferin Construction to share details on the First Ave signal Bridge, once the design process is complete.	The First Ave signal bridge is still in the design stages. An update will be provided to the CLC membership when details are confirmed.	Pending
9	May: Metrolinx to schedule a meeting with Dufferin and Tony W about the work around First Ave and tree removals.	Metrolinx will schedule a meeting with Dufferin Construction and TW in July to go over the work taking place around First Ave.	Pending

Complaints and Issues Tracker

#	Complaint / Issue	Resolution
1-2	Noise and Vibration (two complaints) <ul style="list-style-type: none"> Queen East May 17, 2024 	<ul style="list-style-type: none"> Complaints received about noise and vibration related to demolition work. Action: Metrolinx Community Engagement called back the residents to provide further details on the work taking place and confirm that noise/vibration monitoring was in place to protect against property damage and minimize disruption. In-house noise mitigation had previously been provided to these residents. Attended noise monitoring was undertaken at one of the properties to better understand the impact and determine further mitigation options.
3-4	Noise (two complaints) <ul style="list-style-type: none"> Queen East May 21, 2024 	<ul style="list-style-type: none"> Complaint received about noise in the morning due to crane delivery. Action: The Contractor confirmed that activity taking place was delivery of large crane to access road at Queen St. Bridge. This required traffic to be stopped in both directions and was done early in the morning to avoid disrupting rush hour traffic. The City permit also required the delivery to take place during off-peak traffic hours. The Contractor confirmed that they will ensure timely notification is provided for future large deliveries.
5	Property damage inquiry <ul style="list-style-type: none"> McGee Ave May 21, 2024 	<ul style="list-style-type: none"> Property owner citing concerns about damage due to construction. Action: Metrolinx confirmed that the property was outside the vibration Zone of Influence for the Lakeshore East Joint Corridor Project but has offered to complete a condition survey to use on a go-forward basis.
6	Delivery Access <ul style="list-style-type: none"> Queen East May 22, 2024 	<ul style="list-style-type: none"> Complaint received about business having difficulty unloading deliveries on Queen St. due to closed lane. Action: The Contractor confirmed that traffic pylons to close traffic lane is required from a certain distance to bridge to give drivers enough time to merge. The Contractor is working with Metrolinx and business to accommodate next delivery.
7-8	Noise (two complaints) <ul style="list-style-type: none"> Queen East May 22 and May 23, 2024 	<ul style="list-style-type: none"> Complaint received about noise later in the morning. Action: Contractor reviewed noise data and confirmed that levels were within acceptable limits. Work had been planned and communicated to the resident on multiple occasion. Metrolinx implemented permanent mitigations for the resident to fully resolve concerns.

Complaints and Issues Tracker

#	Complaint / Issue	Resolution
9	Vibration <ul style="list-style-type: none"> Booth Ave May 24, 2024 	<ul style="list-style-type: none"> Complaint received about vibration. Action: The Contractor reviewed vibration monitors in the area and confirmed that while vibrations would be feelable to resident, no exceedances were recorded. The Contractor and Metrolinx are working with resident to provide in-house mitigations.
10	Noise <ul style="list-style-type: none"> Logan and Dundas May 25, 2024 	<ul style="list-style-type: none"> Complaint received about noise during the day. Action: Metrolinx called back the resident to confirm that the noise was related to the Logan Ave. abutment demolition which had been planned and communicated in advance. The resident will be added to distribution list for notices. The Contractor also reviewed noise monitors in the area and confirmed that no exceedances were recorded and that noise mitigations (barriers etc.) were in place during the work.
11	Driving wrong way <ul style="list-style-type: none"> De Grassi May 27, 2024 	<ul style="list-style-type: none"> Complaint received about truck driving the wrong way on one-way street. Action: The Contractor discussed with subcontractor and ensured that it will not happen again.
12	Lighting <ul style="list-style-type: none"> Logan and Dundas May 27, 2024 	<ul style="list-style-type: none"> Complaint received about light in the corridor spilling into residence. Action: The Contractor adjusted the light to be directed away from the residence.
13	Dust <ul style="list-style-type: none"> Queen St E May 27, 2024 	<ul style="list-style-type: none"> Complaint received about dust around the work site. Action: The Contractor implemented the following additional on- site dust mitigations <ul style="list-style-type: none"> Installed mud mats at all access roads to minimize mud tracking out of the corridor Stationed hand sweepers at each access road to reduce dust tracking Spraying water on the site wherever possible
14	Dust <ul style="list-style-type: none"> Dundas St E May 27, 2024 	<ul style="list-style-type: none"> Complaint received about dust around the work site. Action: The Contractor implemented the following additional on- site dust mitigations <ul style="list-style-type: none"> Installed physical barrier, when possible, to control migration of dust off the cap. Use water trucks on site and wetting down concrete to dampen dust when grinding/breaking. Use grinders with vacuum attachments. Place vacuums on the pier cap to manage dust within the area of work.

Complaints and Issues Tracker

#	Complaint / Issue	Resolution
15	Vibration <ul style="list-style-type: none"> Paisley Ave May 28, 2024 	<ul style="list-style-type: none"> Complaint received about vibration during the day. Action: Metrolinx Community Engagement contacted Contractor who advised they were already aware of the elevated vibrations and paused the work to explore possible on-site mitigations, including performing the work with hand tampers rather than the roller. The Contractor also reviewed vibration monitors in the area and confirmed that while vibrations would be feelable to resident, no exceedances were recorded.
16	Parking <ul style="list-style-type: none"> Logan and Dundas May 29, 2024 	<ul style="list-style-type: none"> Complaint received about PDO parking personal vehicle on sidewalk. Action: The Contractor confirmed they will speak with the Police Officer to ensure it does not happen again.
17	Air quality <ul style="list-style-type: none"> McGee May 29, 2024 	<ul style="list-style-type: none"> Complaint received about poor air quality Action: The Contractor reviewed air quality monitors nearby and confirmed there were no exceedances at the time of complaint. A water truck was deployed in the area to suppress the dust.
18 - 19	Vibration (two complaints) <ul style="list-style-type: none"> McGee May 31, 2024 and June 3, 2024 	<ul style="list-style-type: none"> Complaint received about vibration. Action: The Contractor reviewed the work activities and confirmed the vibrations were related to compaction activities.. The data from the closest N/V monitor was reviewed and no exceedances were detected. The Contractor conducted attended monitoring on June 4 to better understand the vibration levels from the compaction work taking place within the corridor. On- site mitigations include; <ul style="list-style-type: none"> Lowering the power on the vibratory roller (compactor) Using a plate tamper rather than a roller where possible Only using one plate tamper at a time
20	Dust <ul style="list-style-type: none"> Dundas St E June 3, 2024 	<ul style="list-style-type: none"> Complaint received about dust around the work site. Action: The Contractor implemented the following additional on- site dust mitigations <ul style="list-style-type: none"> Installed physical barrier, when possible, to control migration of dust off the cap. Use water trucks on site and wetting down concrete to dampen dust when grinding/breaking. Use grinders with vacuum attachments. Place vacuums on the pier cap to manage dust within the area of work.

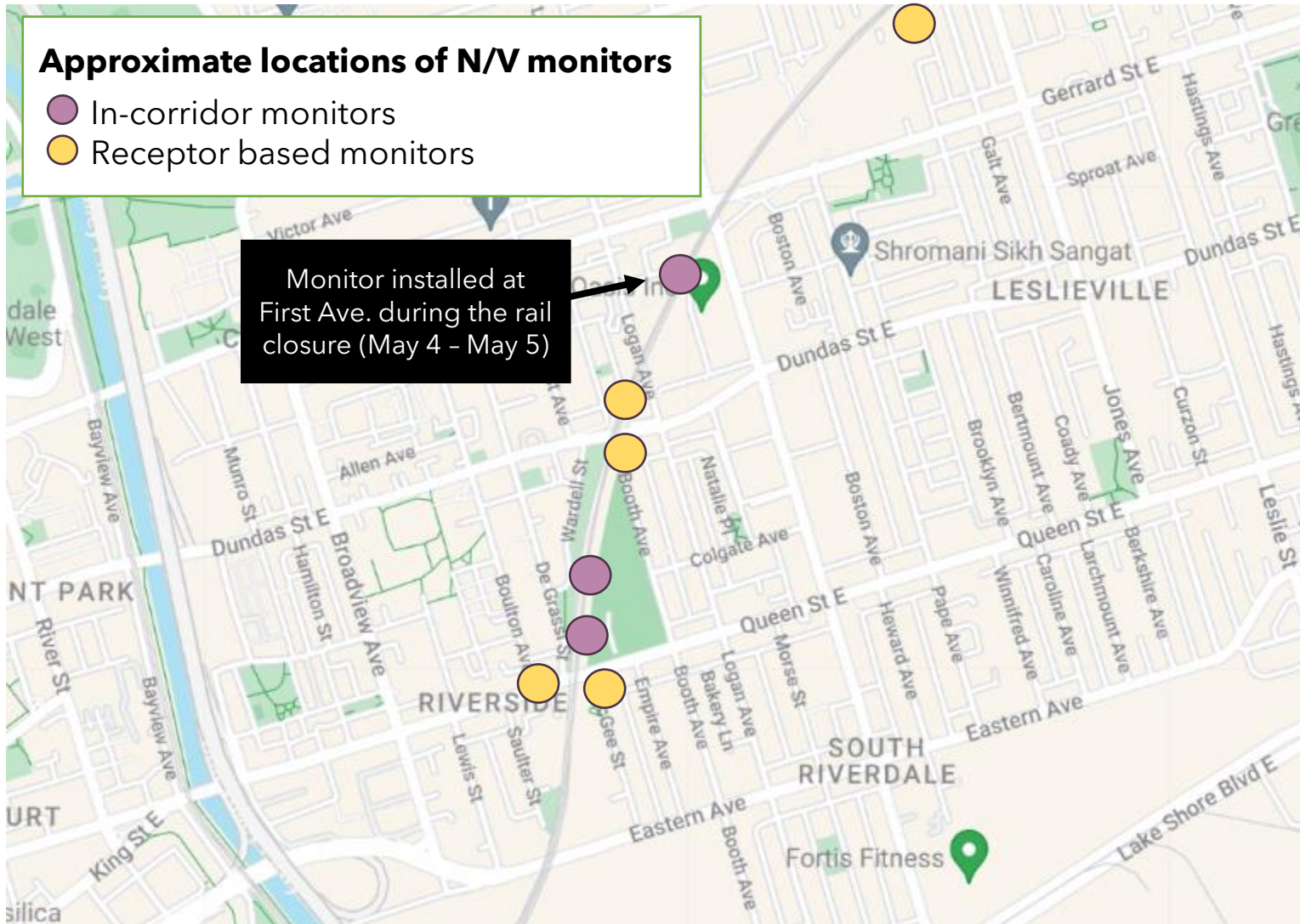
Complaints and Issues Tracker

#	Complaint / Issue	Resolution
21- 28	Vibration (8 complaints) <ul style="list-style-type: none"> Booth Ave and Paisley Ave June 3 - June 8, 2024 	<ul style="list-style-type: none"> Complaints received about vibration. Action: The Contractor reviewed the work activities and confirmed the vibrations were related to compaction activities.. The data from the closest N/V monitor was reviewed and no exceedances were detected. On- site mitigations were implemented, including: <ul style="list-style-type: none"> Lowering the power on the vibratory roller (compactor) Using a plate tamper rather than a roller where possible Only using one plate tamper at a time Ongoing discussions are taking place with the residents about their vibration concerns. An additional noise and vibration monitor has been installed at a property on Booth Ave. to monitor levels and help determine the most effective mitigations.
29	Dust complaint <ul style="list-style-type: none"> Dundas and Logan June 5, 2024 	<ul style="list-style-type: none"> Complaint received about dust and whether there are tools that could minimize dust. Action: The Contractor confirmed that tools with vacuum attachment were in use to minimize dust.
30	Site Cleanliness <ul style="list-style-type: none"> Logan Ave June 7, 2024 	<ul style="list-style-type: none"> Complaint received about scattered garbage around Logan Ave. Action: The Contractor confirmed that the sites provided in the complaint were outside the project work site. Metrolinx went on site and contacted 311 and reported the garbage.
31	Access <ul style="list-style-type: none"> Booth Ave June 8, 2024 	<ul style="list-style-type: none"> Complaint received about contractor truck blocking a fire hydrant. Action: The Contractor confirmed that crews have been instructed not to park on Booth Ave.
32	Noise <ul style="list-style-type: none"> Logan Ave June 12, 2024 	<ul style="list-style-type: none"> Complaint received about noise from abutment demolition at Logan Ave bridge. Action: Metrolinx called back resident to explain work and in-house mitigations provided the next day. Contractor reviewed noise levels and no exceedances were detected.
33	Lighting <ul style="list-style-type: none"> Logan Ave June 12, 2024 	<ul style="list-style-type: none"> Complaint received about no lighting under the Logan Ave bridge. Action: The Contractor confirmed lighting will be re-instated. Update: Lighting was re-instated on Wednesday, June 19.
34	Lighting <ul style="list-style-type: none"> Queen St E June 14, 2024 	<ul style="list-style-type: none"> Complaint received about no lighting under the Queen St E bridge. Action: The Contractor confirmed that there is lighting under the Queen St E bridge.

Noise and Vibration Update

May 2024

Noise and Vibration Monitoring Update - May 2024



- There are two noise and vibration monitoring instruments located within the rail corridor, and five monitors located at adjacent residential receptors
- A temporary monitor was installed near First Ave. during the rail closure from May 4 - May 5 to track levels during the signal bridge work
- Three complaints coincided with exceedances on May 4, May 21, and May 23, 2024, related to early morning deliveries and hydro-vac work
- No vibration exceedances were detected at receptor-based monitors during the month of May
- Noise limits are measured at the property boundary
- In-corridor monitors are used to detect the highest construction related noise sources - based on this data Metrolinx deploys mitigation measures where practical

• The summary above provides information on noise levels measured over 15-minute intervals (15-minute average).

Registered Exceedances at Noise Receptor Locations: May 2024

Date/Time of Exceedances	Detail	Location	Source	Corrective action
May 4 - Nighttime and daytime	Noise	Near the Dundas St. E. and Logan Ave. bridges	<ul style="list-style-type: none"> Excavator, chainsaw, hydro-vac, and drill 	<ul style="list-style-type: none"> Temporary noise barriers installed Relocated works away from residential properties In-house mitigations provided to local residents - work needed to proceed overnight due to schedule constraints during major track closure
May 5 - Nighttime and daytime	Noise	Near the Dundas St. E. and Logan Ave. bridges	<ul style="list-style-type: none"> Excavator, chainsaw, and drill 	<ul style="list-style-type: none"> Relocated cutting and drilling activities away from residential properties
May 8 - Daytime	Noise	Near the Dundas St. E. bridge	<ul style="list-style-type: none"> Excavator with drill attachment 	<ul style="list-style-type: none"> Adjusted work schedule to minimize impact by performing noisy work during one allotted time period, rather than throughout the entire day
May 11 - Early morning	Noise	Near the Dundas St. E. bridge	<ul style="list-style-type: none"> Crane removing formwork 	<ul style="list-style-type: none"> Reschedule activity to after 9 a.m.
May 21 - Nighttime (Lmax exceedance)	Noise	Near the Queen St. E. bridge	<ul style="list-style-type: none"> Delivering crane to the work site 	<ul style="list-style-type: none"> Ensure subcontractor equipment has broadband back up alarms Improve notification period for early morning deliveries - work needed to take place at night due to permit restrictions In-house mitigations provided to residents
May 23 - Nighttime (Lmax exceedance)	Noise	Near the Queen St. E. bridge	<ul style="list-style-type: none"> Use of a chainsaw to cut wood lagging boards and movement of equipment 	<ul style="list-style-type: none"> Noise barriers and electric chainsaws in use Contractor was instructed to avoid banging of bins/equipment during work Provided tailored mitigations for the resident

Registered Exceedances at Noise Receptor Locations: May 2024

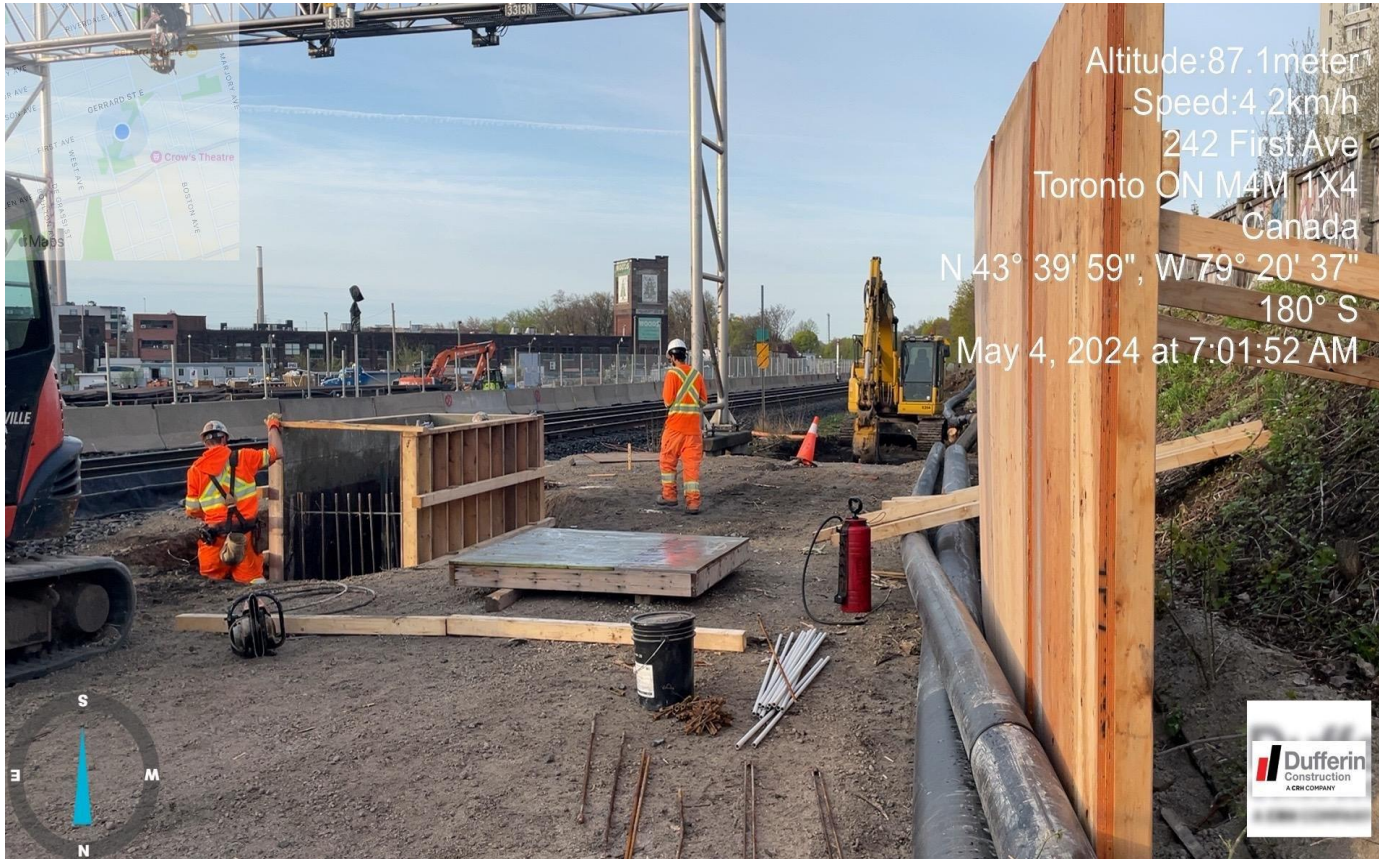
Date/Time of Exceedances	Detail	Location	Source	Corrective action
May 25 - Early morning	Noise	Near the Dundas St. E. and Logan Ave. bridges	<ul style="list-style-type: none"> Excavator installing hoarding and hauling material 	<ul style="list-style-type: none"> Reschedule activity to after 9 a.m. Relocate hauling activities away from residential properties
May 26 - Nighttime	Noise	Near the Dundas St. E. and Logan Ave. bridges	<ul style="list-style-type: none"> Chainsaw 	<ul style="list-style-type: none"> Relocate cutting activities away from residential properties Adjust placement of noise barriers
May 27 - Nighttime	Noise	Near the Dundas St. E. and Logan Ave. bridges	<ul style="list-style-type: none"> Chainsaw 	<ul style="list-style-type: none"> Relocate cutting activities away from residential properties Adjust placement of noise barriers

Registered Exceedances at In-Corridor Noise Receptor Locations: May 2024

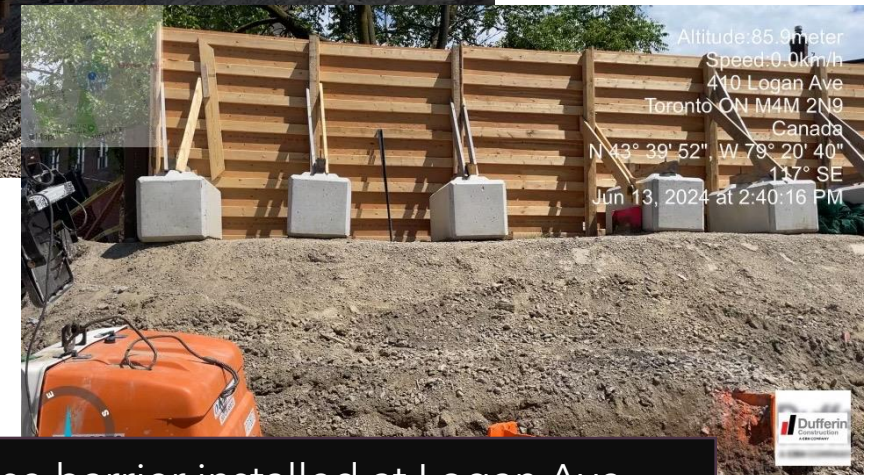
Date/Time of Exceedances	Detail	Location	Source	Corrective action
May 4 - Nighttime and daytime	Noise	Within construction site near Queen St. E. bridge and First Ave.	<ul style="list-style-type: none"> Vac-truck, excavators, pump/generator, truck, and chainsaw 	<ul style="list-style-type: none"> Hydro-vac work required to take place overnight due to schedule constraints - noise barriers implemented during work Contractor reviewed exceedance and confirmed the exceedance was caused by the machinery operating near the monitoring system After review, it was determined that no further action was required In-house mitigations provided to local residents - work needed to proceed overnight due to schedule constraints during major track closures
May 5 - Nighttime and daytime	Noise	Within construction site near Queen St. E. bridge and First Ave.	<ul style="list-style-type: none"> Chainsaw and drill 	<ul style="list-style-type: none"> Exceedance was investigated based on the setback distances, no exceedance is expected at the closest sensitive receptor
May 6 - May 14 (except for May 8)	Noise	Within construction site near Queen St. E. bridge	<ul style="list-style-type: none"> Pump and generator 	<ul style="list-style-type: none"> Contractor reviewed exceedance and confirmed the exceedance was caused by the generator and pump operating directly beside the monitor After review, it was determined that no further action was required

- The above table provides information on noise levels measured over 15-minute intervals (15-minute average).
- Exceedances unrelated to Lakeshore East Joint Corridor construction are not reflected in this table.

Noise Mitigation Measures



Noise barrier installed during bridge signal work at First Ave. during track closure



Noise barrier installed at Logan Ave.

Ontario Line Construction Update Lakeshore East Joint Corridor Early Works Construction



**Bridge reconstruction:
Queen St. E., Dundas St. E.,
and Logan Ave.**

Bridge Abutment Demolition

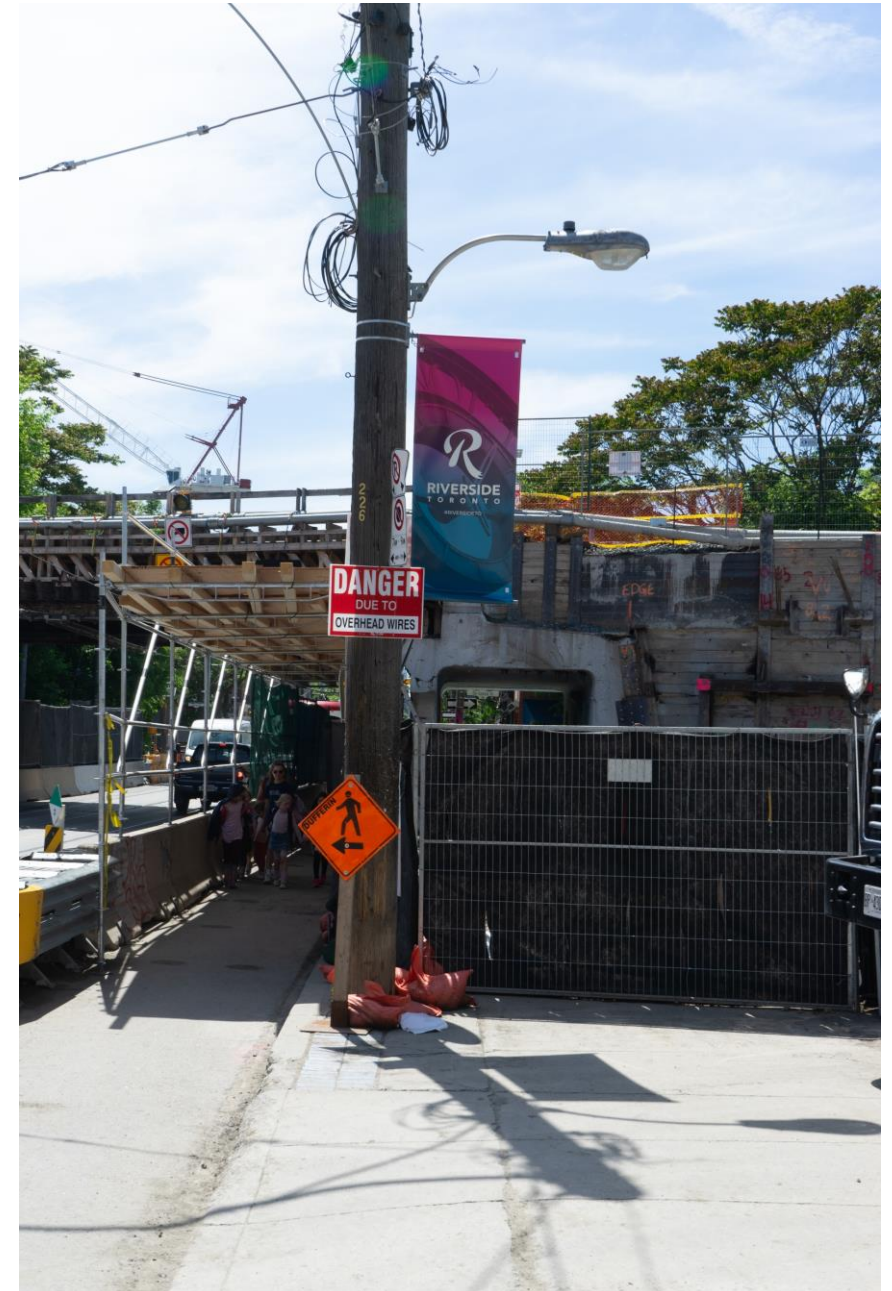
- Bridge abutments (the sides of the bridges) will be demolished and removed.
- Broken concrete will be loaded into dump trucks and hauled off site for disposal.
- The Queen Street, Dundas Street, and Logan Avenue bridges will all have their abutments and piers demolished.
- Periodic traffic lane and sidewalk closures will be required; no road closures are expected.

Start dates and duration:

- **Queen bridge:** Completed.
- **Dundas bridge:** Demolition of west abutment is completed, and the remaining portion of east abutment will be demolished in early July.
- **Logan Bridge:** Ongoing periodically for approximately one month.

Hours of work:

- Periodically Monday - Friday, between 5 a.m. - 7 p.m. (demolition activities will be restricted before 7 a.m.) and on Saturdays from 7 a.m. - 5 p.m.



Queen St. E. with demolished abutment.

Bridge Abutment Construction

- After demolition work is completed, the new bridge abutments will be built.
- Periodic traffic lane and sidewalk closures will be required; no road closures are expected.

Start dates and duration:

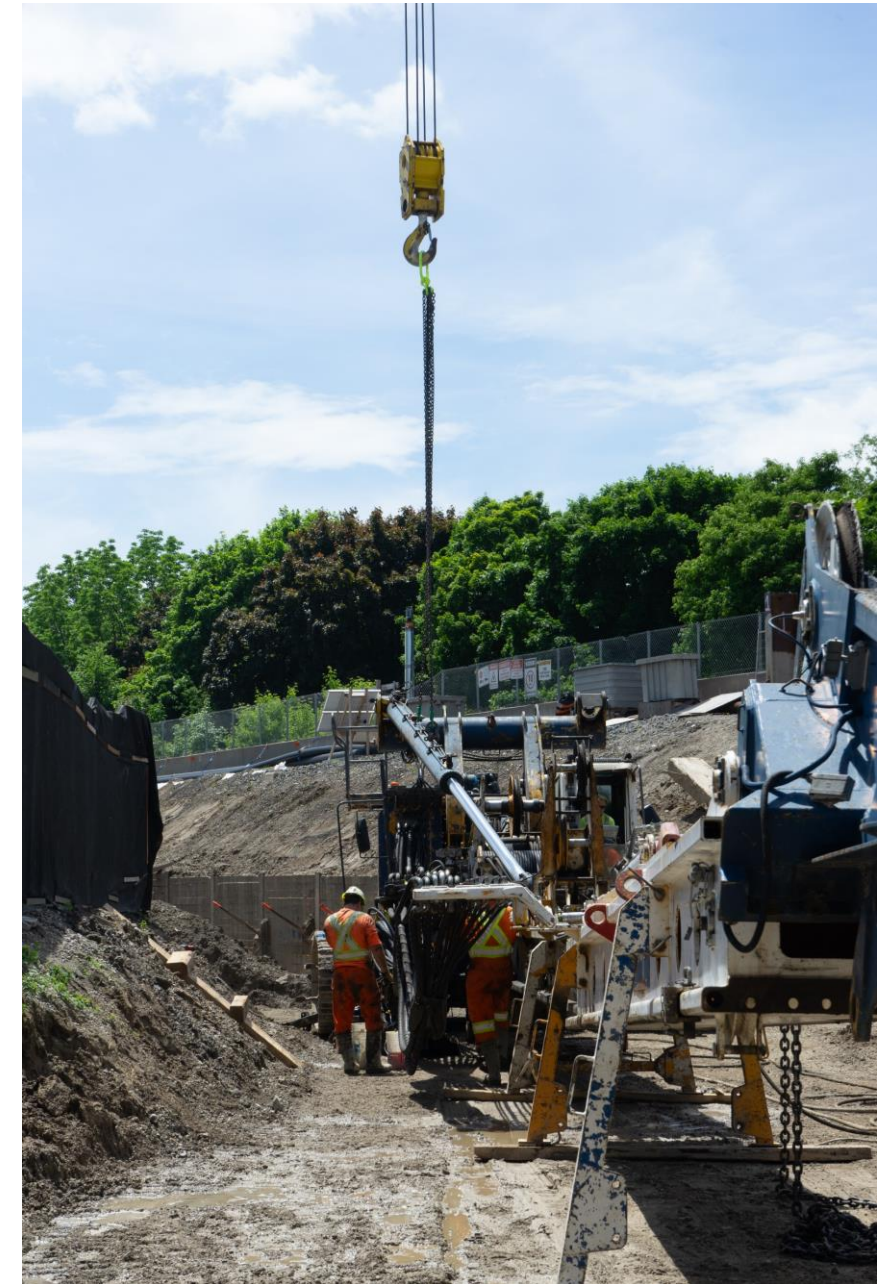
- **Queen bridge:** Ongoing for approximately three months.
- **Dundas bridge:** Ongoing for approximately three months.
- **Logan Bridge:** Starting in early July for approximately three months.

Hours of work:

Monday – Friday, between 7 a.m. – 5 p.m. Periodically on Saturdays from 9 a.m. – 5 p.m.

Extended hours:

Construction crews may be required to work periodically between 6 a.m. – 11 p.m. to complete critical work



Setting up a crane at Dundas St. E. that will help build the new abutments

Bridge Pier Construction

- New bridge piers are currently being constructed at Dundas St. E. and Logan Ave.
- Drill rigs are being used to dig holes into the ground which are then filled with rebar and concrete to support the pier footings.
- New piers will then be built out of steel and concrete.
- Construction activities include excavation, rebar installation, concrete works, and hauling.

Hours of work:

- **Dundas Bridge:** Completed.
- **Logan Bridge:** Until mid July 2024
- Monday - Friday between 7 a.m. - 7 p.m. (up until 10 p.m. as required); periodically on Saturdays from 7 a.m. - 5 p.m.



New piers at Dundas St. E.

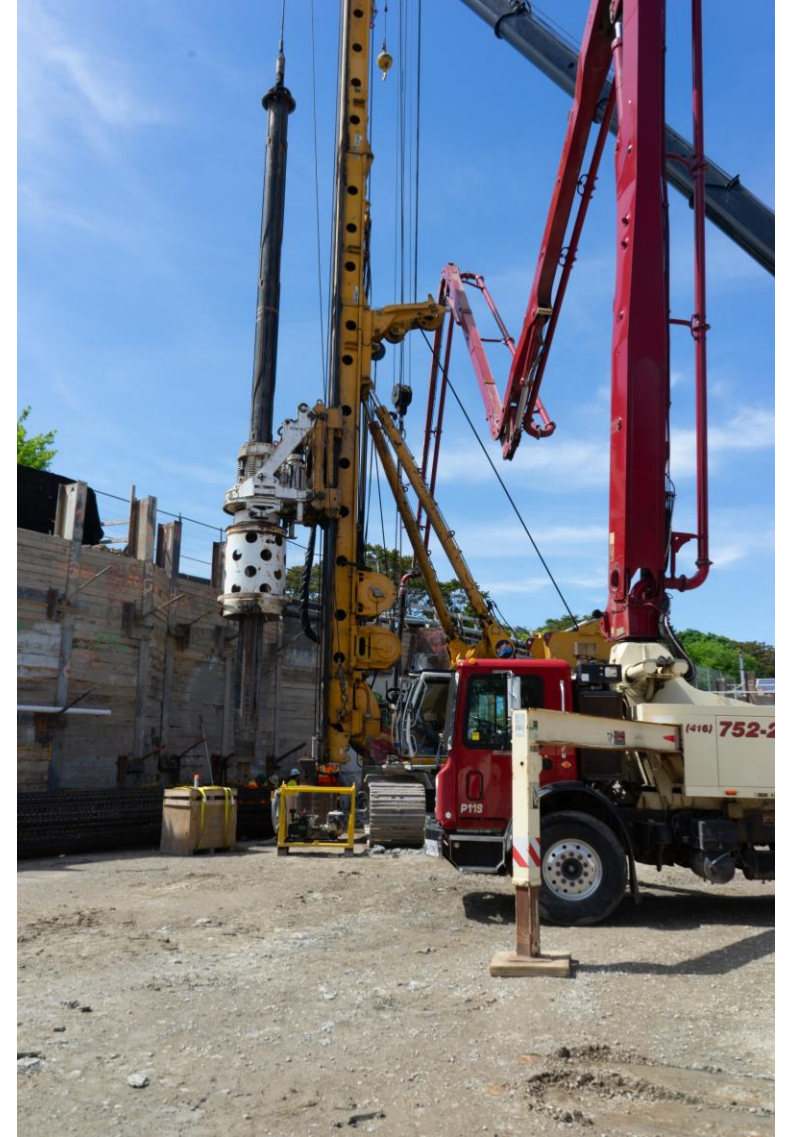
In-Corridor Work Progress - Preparing for the new bridges



Setting up a crane for new abutments

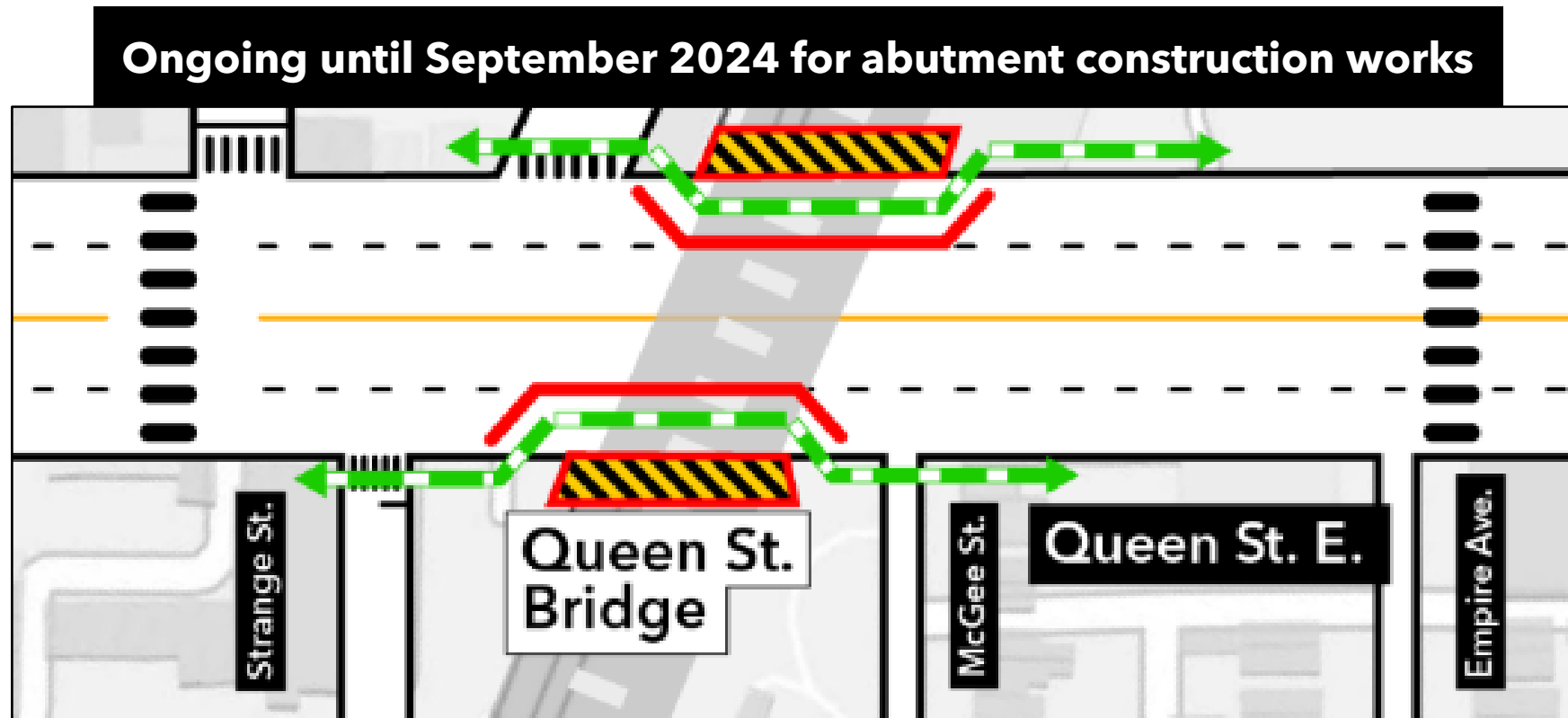


Putting in the final touches on the new piers



Installing steel-and-concrete caissons for the new abutments

Traffic Configuration: Queen Street East Bridge

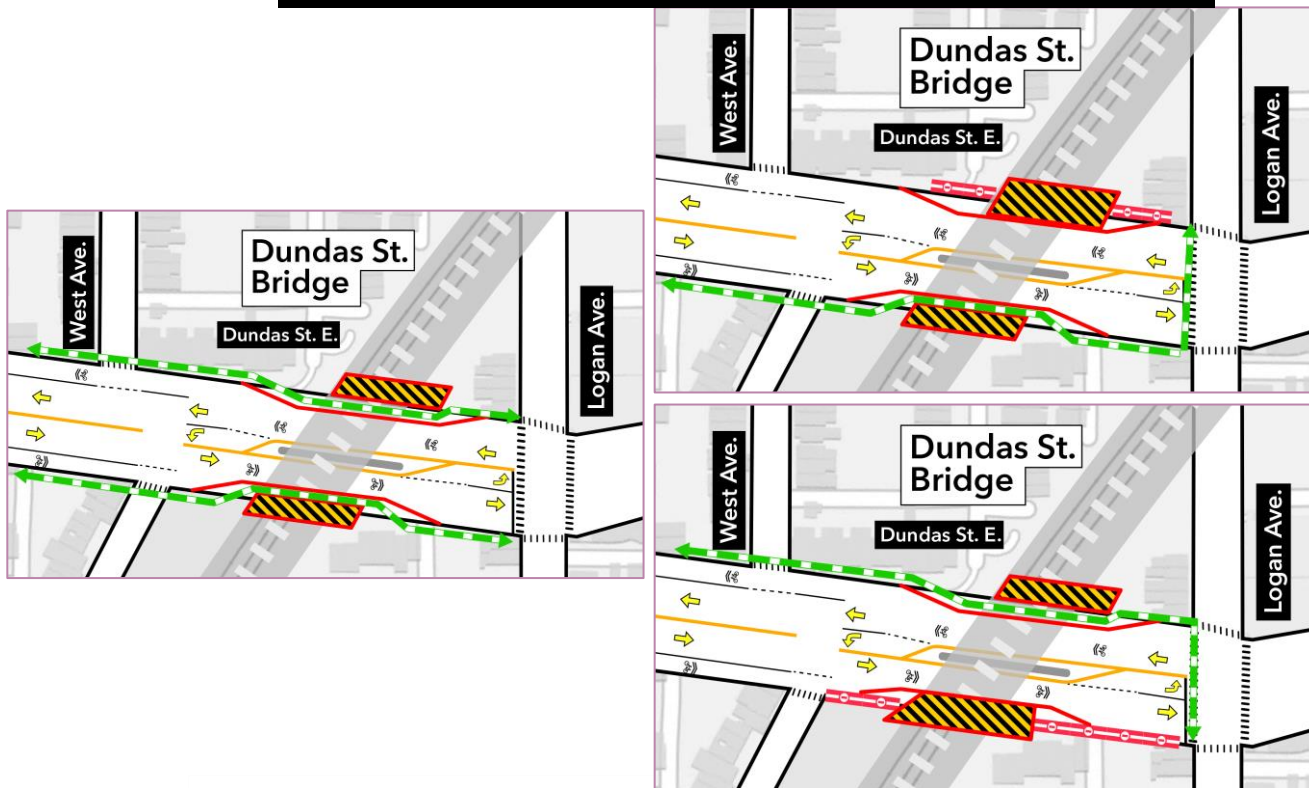


- Existing rail corridor
- Work area
- Sidewalk closure
- Pedestrian access
- Temporary concrete barrier



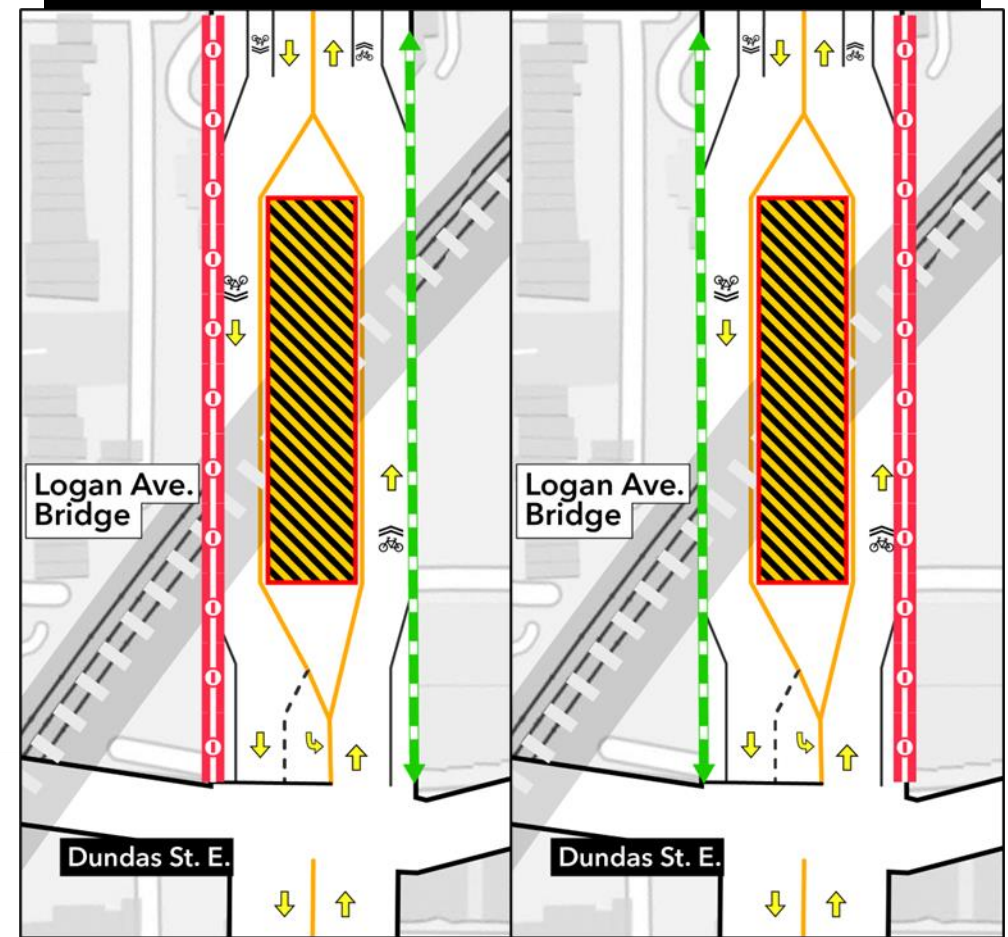
Current Traffic Configuration: Dundas and Logan Bridges

**Dundas St. E.
Ongoing for approx. three months**

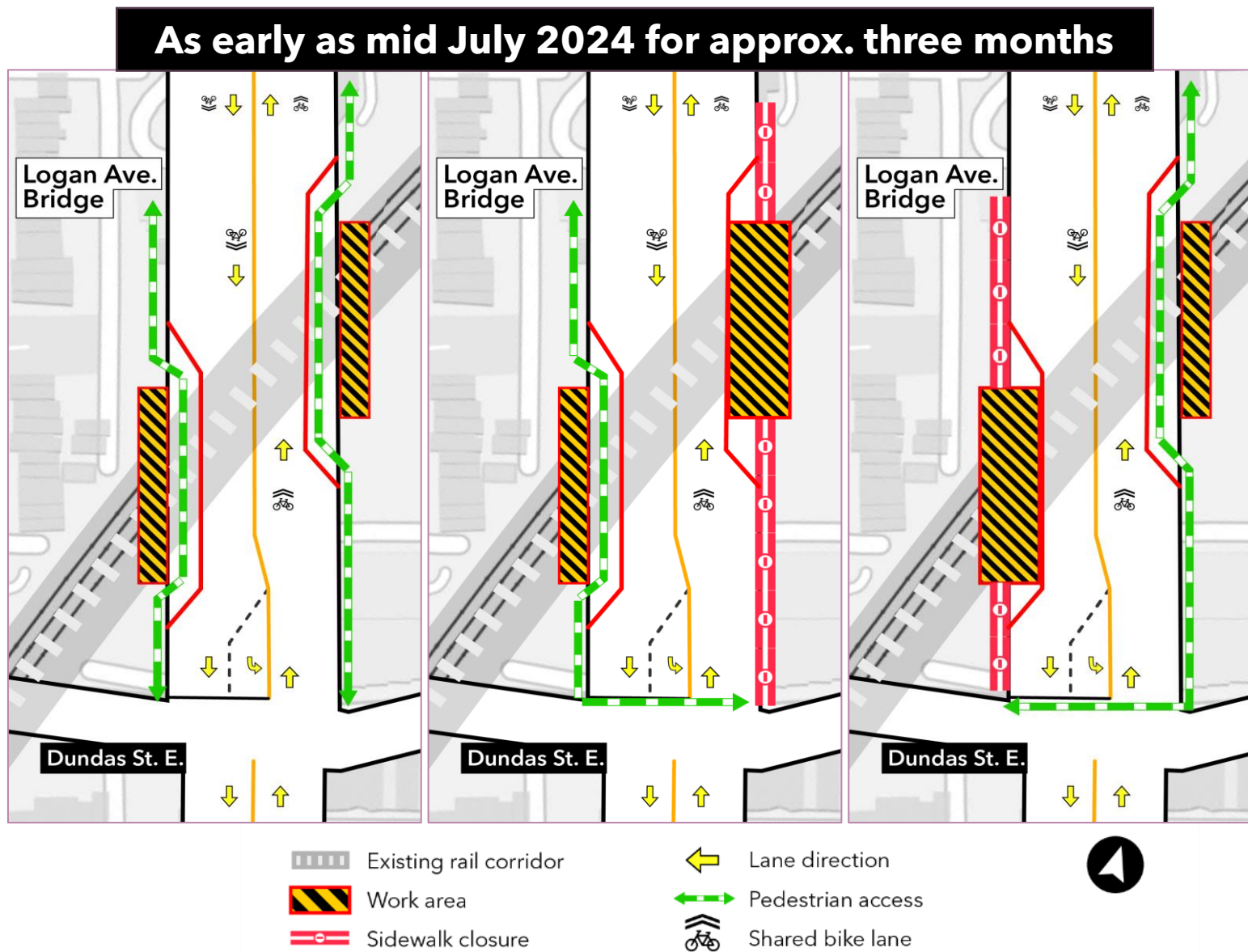


- Existing rail corridor
- Work area
- Sidewalk closure
- Lane direction
- Pedestrian access
- Shared bike lane

**Logan Ave.
Ongoing for approx. one month**



Upcoming Traffic Configuration: Logan Bridge Abutment Construction

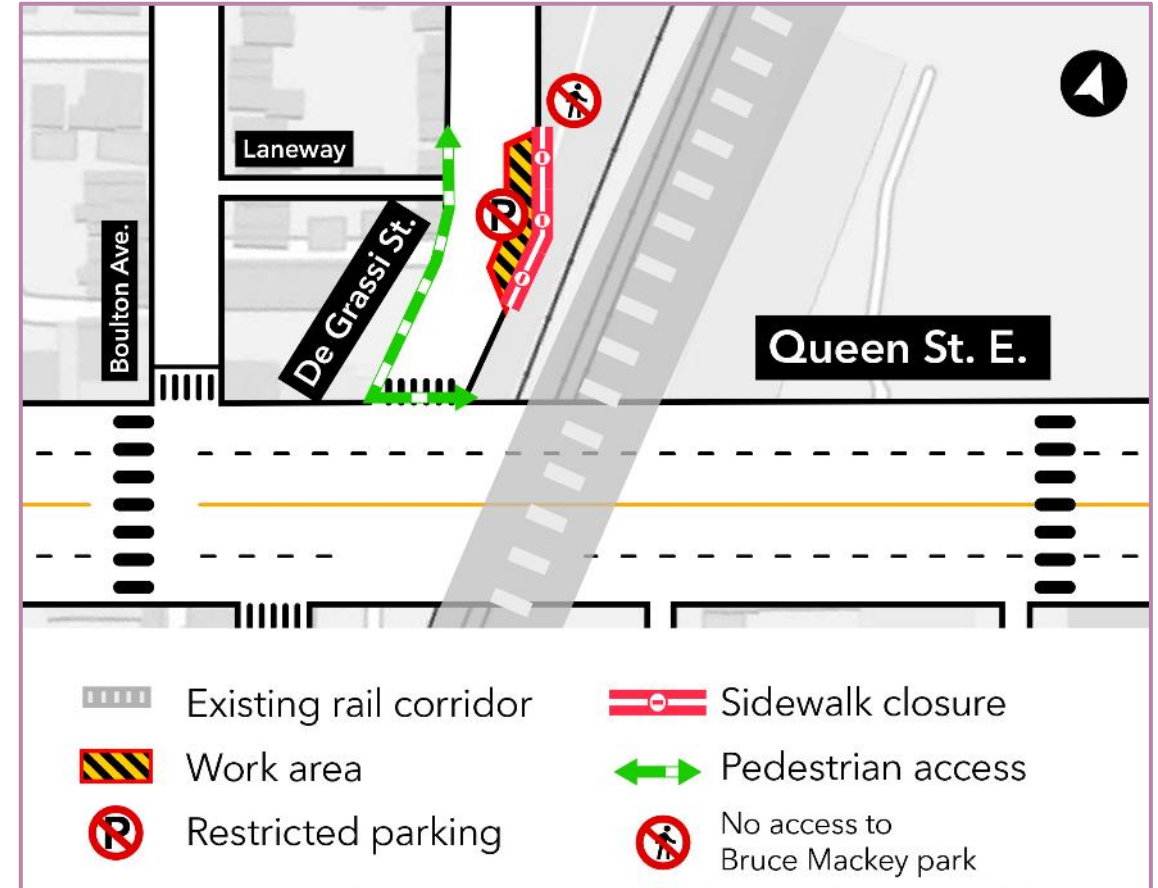


Sewer works on De Grassi Street

- A new combined sewer will be installed on De Grassi Street north of Queen Street East
- This new sewer line is required to make space for the future Riverside-Leslieville subway station
- Temporary parking and sidewalk closure will be required to safely perform the work.
- Entry into Bruce Mackey park will be restricted from the south side during certain stages of the work; the north entrance into the park will remain open.

Start dates and hours of work:

- **Sewer installation:** Ongoing for approximately three weeks
- **Hours:** Monday - Friday, between 7 a.m. - 7 p.m.





Construction Update: In-Corridor Work

In-Corridor Work Update

#	Activity	Description	Location	Date and times
1	Excavation and Structural Support Work	<ul style="list-style-type: none"> Support structures (piles and shoring walls) are being installed throughout the corridor to enable bridge reconstruction and retaining wall and noise barrier installations. Construction activities include excavation, drilling and concrete works. 	<ul style="list-style-type: none"> Throughout the rail corridor between Eastern Ave. and Carlaw Ave. At Queen St. E., Dundas St. E. and Logan Ave. bridge 	<ul style="list-style-type: none"> Ongoing until mid-July Daytime: Monday - Friday from 7 a.m. to 7 p.m. Overnight: Sunday - Thursday from 8 p.m. to 5 a.m.
2	Utility Installations	Excavation inside the rail corridor to install an enclosed conduit (raceway) that will protect utilities from external conditions.	<p>Within the rail corridor between Thackeray St. and Jones Ave.</p> <p>Utility installations on the south side of the corridor were completed between Jones Pape Aves.</p> <p>Crews have shifted to the north side of the corridor and will resume on the south side of the corridor in approx. July 2024.</p>	<ul style="list-style-type: none"> Daytime: Monday - Friday from 6 a.m. to 5 p.m. Overnight work may resume within the coming months depending on work constrains; notice will be provided in advance.
3	Fence and noise barrier installation	New fencing and noise barriers will be installed. The pathway at Galt Laneway to Gerrard Square will be closed to accommodate this work.	On the east side of the rail corridor from Gerrard St. E. and Jones Ave.	<ul style="list-style-type: none"> Ongoing for approximately six months Daytime: Monday - Friday from 7 a.m. to 7 p.m.
4	Retaining Wall (T-Wall) Construction	Installation of pre-cast concrete block retaining walls	On the east side of the rail corridor from Eastern Ave. - Thackery St.	<ul style="list-style-type: none"> Ongoing during daytime hours until approx. Fall 2024 Overnight work to start early July Daytime: Monday - Saturday from 7 a.m. to 7 p.m. Overnight: Sunday - Friday from 8 p.m. to 5 a.m.

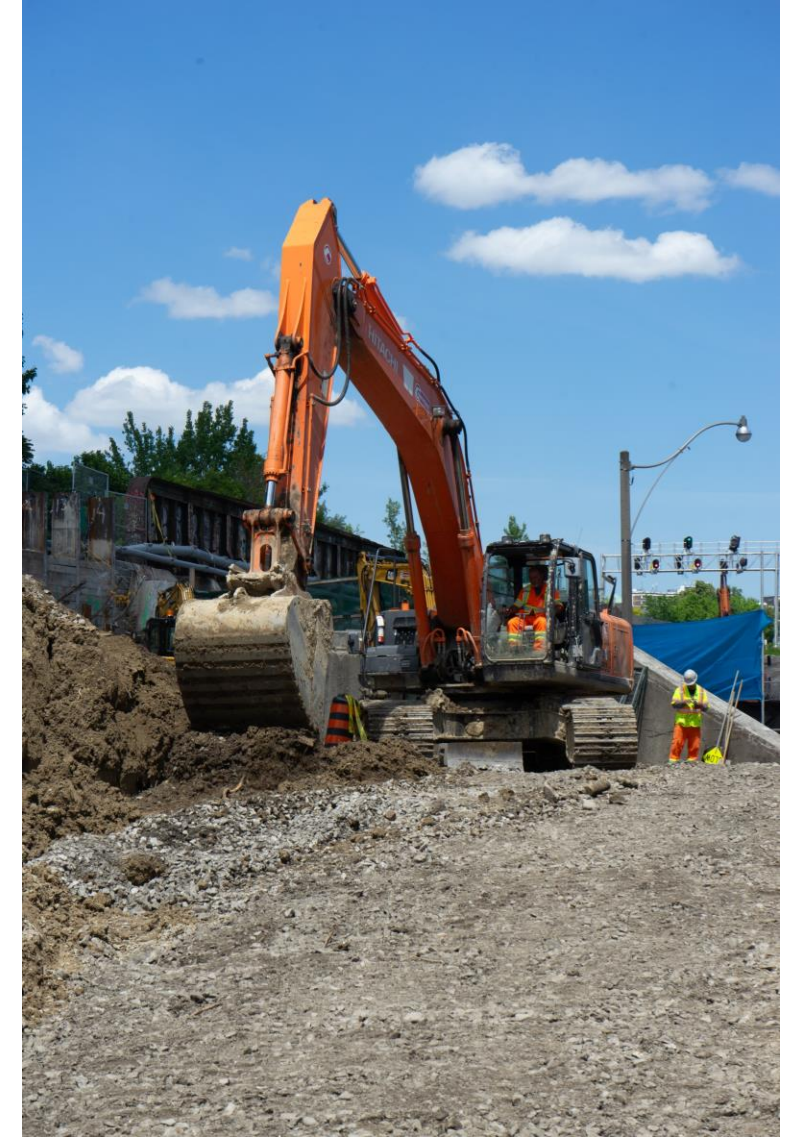
In-Corridor Work Progress - Continuing lagging and excavation



Lagging works and a part of the old abutment at Dundas St. E.



Progress on lagging.



Excavating by the Logan Bridge.

Retaining Wall Construction

- Retaining wall construction is ongoing between Eastern Ave. – Dundas St. E. for approximately six months
- In early July, overnight retaining wall work will begin to accelerate construction and project completion
- Less disruptive work will be scheduled during the overnight period and noise mitigation measures will be implemented throughout the work to reduce disruption
- Work will take place periodically along each section of the corridor; overnight work will not take place in the same area every night

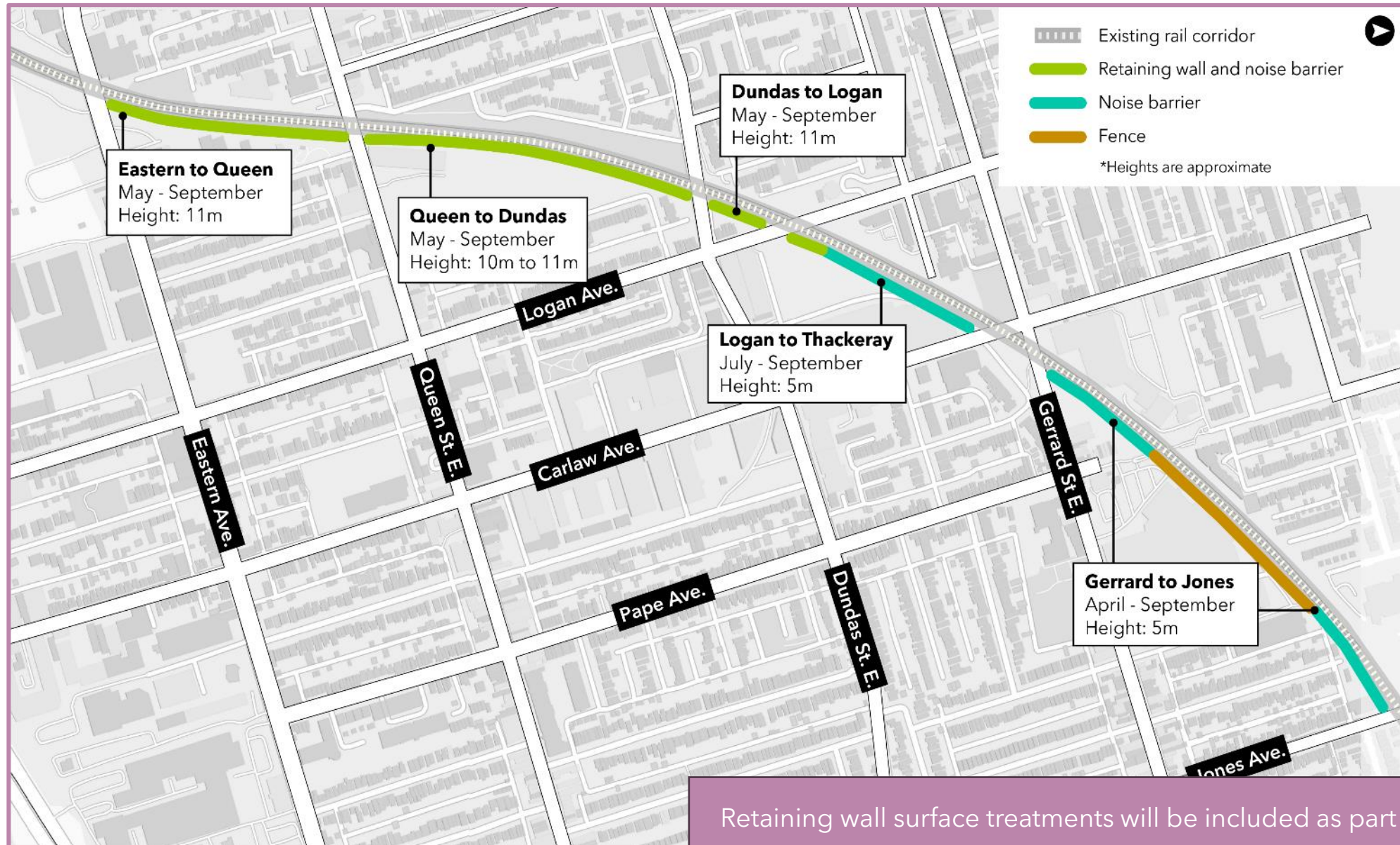
Work will include:

- Building the foundation for the walls by pouring concrete and laying granular material
- Installing pre-cast concrete blocks (T-walls)
- Backfilling and compacting around retaining walls



Activity	Working Hours
Material deliveries, concrete works, material placement, grading, backfilling and compaction	Daytime: Monday – Saturday from 7 a.m. – 7 p.m.
Placement of pre-cast concrete blocks, installing formwork, site preparation and maintenance work	Overnight: Sunday – Thursday from 8 p.m. – 5 a.m.

Retaining Wall Construction Update



In-Corridor Work Progress - Retaining wall blocks installation behind Jimmie Simpson Rec Centre



Preparing the next set of blocks



Close up of the retaining wall blocks



Blocks sitting on concrete base

2024 Lookahead

Q2 2024 (April- June)	Q3 2024 (July - September)	Q4 2024 (October- December)
<p>Activity: Excavation and support works in the rail corridor and at the Queen St. E., Logan Ave., and Dundas St. E. bridges</p> <p>Hours:</p> <ul style="list-style-type: none"> • Daytime: Monday - Friday from 7 a.m. to 7 p.m. • Overnight: Sunday - Thursday from 8 p.m. to 5 a.m. 	<p>Activity: Continue installation of retaining walls and noise barriers from Eastern Ave. - Jones Ave</p> <ul style="list-style-type: none"> • Daytime: Monday - Saturday from 7 a.m. to 7 p.m. • Overnight: Sunday - Thursday from 8 p.m. to 5 a.m. 	<p>Activity: Rail closures for installation and commissioning of new tracks</p> <p>Hours:</p> <ul style="list-style-type: none"> • Two weekends between October and November 2024 (exact dates to be determined); 24-hour work
<p>Activity: Utility installations between Gerrard St. E. and Jones Ave.</p> <p>Hours:</p> <ul style="list-style-type: none"> • Overnight: Monday - Friday from 8 p.m. to 5 a.m. 	<p>Activity: Continue construction of new bridge abutments at Queen St. E., Logan Ave., and Dundas St. E.</p> <p>Hours: Exact days and work hours to be determined</p>	<p>Activity: Continue construction of the new bridges on the east side of the rail corridor</p> <p>Hours: Exact days and work hours to be determined</p>
<p>Activity: Bridge abutment demolition and pier construction at the Queen St. E., Logan Ave., and Dundas St. E. bridges</p> <p>Hours:</p> <ul style="list-style-type: none"> • Daytime: Monday - Friday from 7 a.m. to 7 p.m. and periodically Saturday's from 7 a.m. - 5p.m. • Periodically crews may be required to work until 10 p.m. on weekdays • Overnight: Weekend road closures may be required for abutment demolitions 	<p>Activity: Start preparation work (tree and fence removals) for construction on the west side of the corridor</p> <p>Hours: Daytime (exact days and work hours to be determined)</p>	<p>Activity: Continue preparation work (access roads) for construction on the west side of the corridor</p> <p>Hours: Daytime (exact days and work hours to be determined)</p>
<p>Activity: Installation of retaining walls and noise barriers from Eastern Ave. - Jones Ave.</p> <p>Hours:</p> <ul style="list-style-type: none"> • Daytime: Monday - Saturday from 7 a.m. to 7 p.m. • Overnight: Sunday - Thursday from 8 p.m. to 5 a.m. 	<p>NEW Activity: Bridge deck and girder installation</p> <p>Hours: Road closures to take place on Queen St., Logan Ave., and Dundas St. E. between Sept. - Oct. 2024 - exact dates to be confirmed.</p>	<p>Activity: Logan Ave. watermain relocation</p> <p>Hours: Exact days and work hours to be determined</p>
<p>Activity: Sewer restoration work at Degrassi St. E. and Saulter St., and dewatering installation at 2 Paisley Ave.</p> <p>Hours:</p> <ul style="list-style-type: none"> • Daytime: Monday- Friday from 7 a.m.- 7p.m. 		
<p>Activity: Start construction of new bridge abutments at Queen St. E., Logan Ave., and Dundas St. E.</p> <p>Hours: Exact days and work hours to be determined</p>		<ul style="list-style-type: none"> • Work activities and hours listed are tentative and subject to change



**Eastern Avenue Bridge
East Harbour Transit Hub**

EAST HARBOUR TRANSIT HUB

EARLY WORKS AND EASTERN AVENUE BRIDGE WORK

- Early Works may include such things as: establishing the work zone, moving equipment, supplies, and other resources, geo-technical investigations, utility daylighting, and track work.
- Early works are an important component of any construction project. These activities set the groundwork for major construction and reduce the risk of delays to the project downstream.
- Ongoing curb-lane closures on Eastern Avenue are in effect until October 2026*, to create a safe working zone for the crews and vehicle traffic.
- There will be road closures on Eastern Avenue between Broadview and Logan Avenues as highlighted below, to complete the bridge formwork and deck pour.

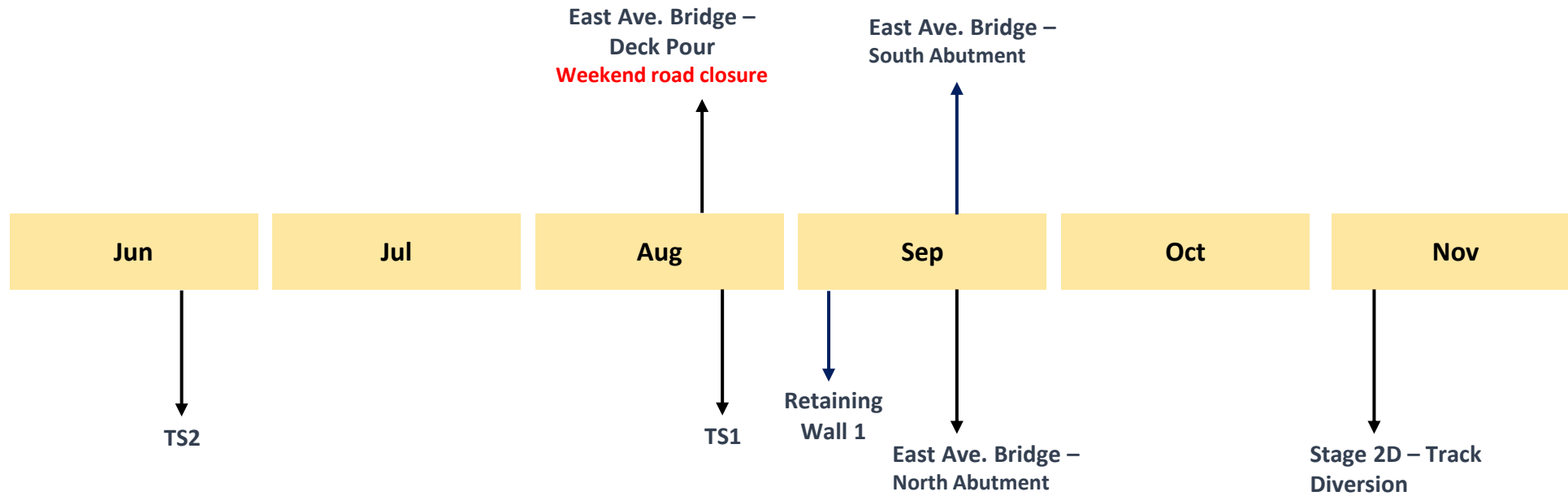
Night Road Closures: During July 2-6, July 8-13, and July 15-20 (if required), anticipate nightly road closure that will begin at 10:00 pm until 5:00 am the next morning.

Weekend Road Closures: Road closures will begin at 11:00 pm on Friday until 5:00 am on Monday morning during the weekends of August 16-19, August 23-26, and August 30-September 2.

•Dates are subject to change

EAST HARBOUR TRANSIT HUB

UPCOMING CONSTRUCTION ACTIVITIES



Note: Dates are subject to change

What's Next and Wrap Up

Community Engagement

Metrolinx along with construction and project representatives are here for the community throughout the project. Upcoming community engagement activities include:

- Jane's Walk Ontario Line Riverside - May 3
- Community Police Day at Jimmie Simpson Park - May 11
- Riverside Eats & Beats Streetfest- June 8
- Sounds of Leslieville & Riverside- July 5-8

Next CLC: July 18 from 6:00 -7:30 p.m.

Follow us on social media:

X / Facebook / Instagram @ OntarioLine



Community Police Day, May 2024, Jimmie Simpson Park

Contact Us

Metrolinx will keep the community, residents and businesses informed by providing project updates, seeking input and feedback, and addressing questions and concerns effectively and quickly.

Stay connected:

Ontario Line e-newsletter @ [Metrolinx.com/OntarioLine](https://www.metrolinx.com/OntarioLine)

Questions or comments:

OntarioLine@metrolinx.com

24/7 call # 416-202-5100

Follow us on social media:

Twitter / Facebook / Instagram @ OntarioLine



Ontario Line Community Office 770 Queen Street East

Questions and Answers



Appendix

CLC Code of Conduct



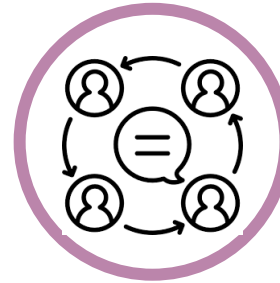
Participate fully, openly, and transparently in discussions, while also creating an environment where all members are encouraged to contribute and share their views.



Participate in a respectful manner towards other CLC members by using appropriate language.



Keep requested agenda and discussion items within the **mandate and scope** of the **Construction Liaison Committee**.



Represent their community's diverse perspectives and interests.

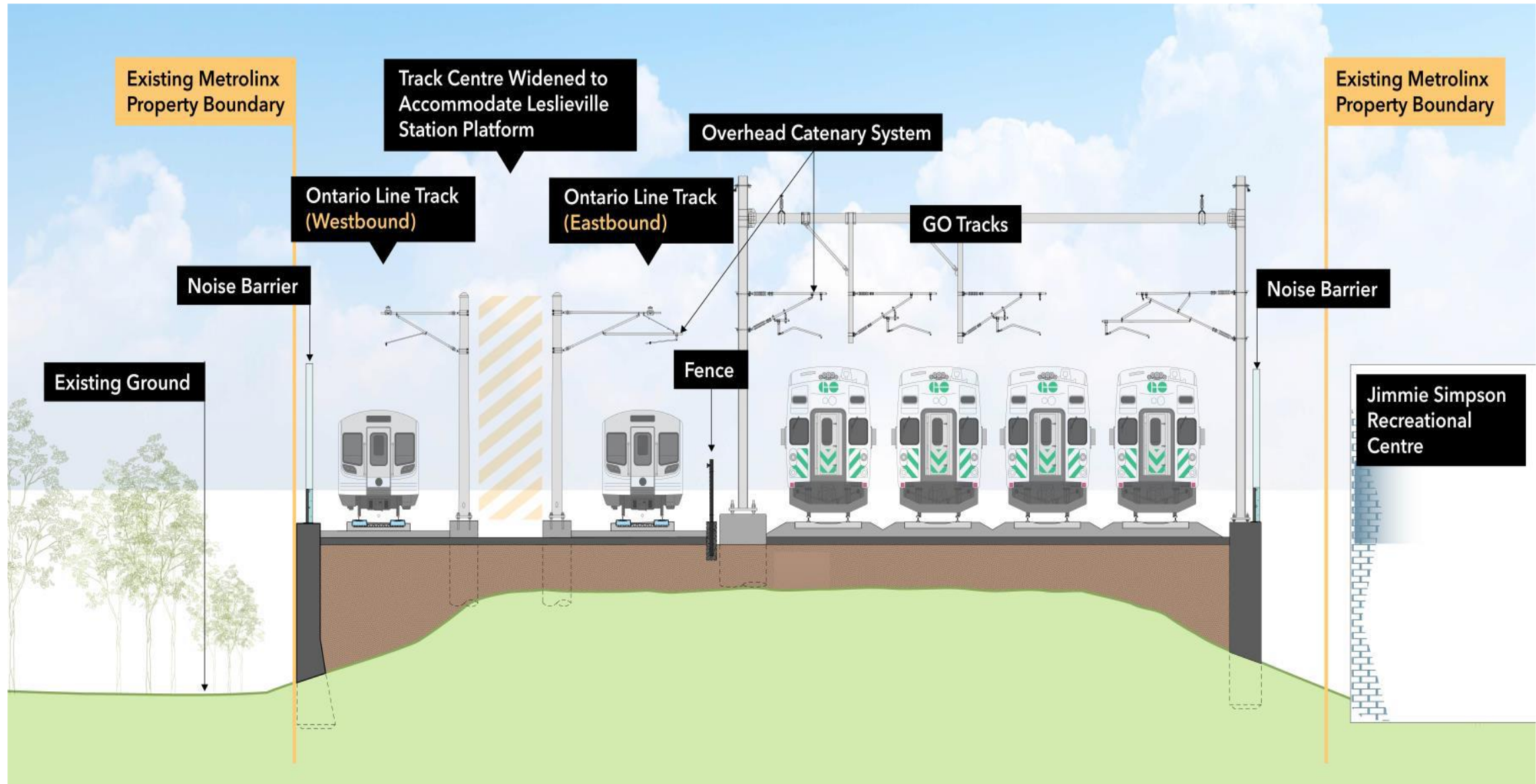


Maintain confidentiality of sensitive issues, when requested by participants.



Commit to equity, diversity and inclusion by supporting the participation of the whole community regardless of race, gender, class, sexuality, age or ability.

Summary of Lakeshore East Joint Corridor Early Works



Construction Liaison Committees (CLC)

Construction Liaison Committees (CLCs) provide open, two-way communication and sharing of information before and during the construction of the Ontario Line project. The CLC will focus on the impacts, issues and areas of concern for resolution related to the Ontario Line construction within the Leslieville/Riverside neighbourhoods. The full Terms of Reference will be shared with the CLC via email.

- The CLC will meet regularly as construction activities get underway
- CLC frequency is flexible, depending on schedules/availability and critical construction work
- Metrolinx will work with stakeholders to develop meeting agendas
- Meetings will last 60-90 minutes, depending on the agenda
- Metrolinx to chair the CLC with support from the project contractor
- Project contractor will participate and lead the construction updates
- Action items/issues/complaints to be logged for resolution

Construction Liaison Committee (CLC)

Community representatives



- Elected officials
- Community groups/residents
- Residents' groups/associations
- Tenant representatives
- BIAs
- Business owners

City of Toronto



Project team members



- Metrolinx—representatives from Subways Sponsors Office, Design Division, Community Engagement, Project Teams and Contractor/Project Co.

Who Does What?



A division of CRH Canada Group Inc.

Responsible for construction delivery, establishing the construction schedule, determining construction plans and the care and control of construction sites.



Contribute subject matter expertise regarding City polices, requirements, permits and procedures.

Ensure key City and community interests are noted and addressed through application design reviews and permits.

Work with partners to minimize negative impacts on residents and the environment.

Monitor construction sites for safety and adherence to City standards and bylaws.



Overarching accountability for entire project, strategy and content approvals, building relationships and understanding needs of the community.

Oversight of construction contractors to ensure compliance with contractual obligations, including work schedules, adherence to acceptable noise levels, traffic management plans and permit conditions.

Construction Liaison Committee Members



Community Members

- Riverside BIA
- Leslieville BIA
- WoodGreen Community Services
- Lakeshore East Community Advisory Committee
 - Shelley Kline
 - Tony Whitaker
- Rosemary Waterston (resident)
- Catherine Riddell (resident)
- Stephen Davies (resident)
- Fontbonne Ministries
- Saulter Street Brewery
- Bonjour Brioche Bakery
- Tabule Restaurant
- Jimmie Simpson Recreation Centre (City of Toronto)

Elected Officials (or designate)

- MP Julie Dabrusin
- MPP Peter Tabuns
- Councillor Paula Fletcher



- Transit Expansion Division
- Parks, Forestry and Recreation
- Transportation Services



- Ontario Line Community Engagement
 - Mark Clancy
 - Katiana Moussa
 - Louis Vatr
- Dufferin Construction
- Project Sponsor
- Capital Projects Group
- Traffic and Transportation
- Other project teams as required

Impact Levels

Major Impact



Includes:

- Major intersection work
- Overnight work
- Transit impacts
- Road closures
- Public parking displacement

Medium Impact



Includes:

- Paving
- Long term traffic lane closures
- Work affecting access to private driveways

Minor Impact



Includes:

- Short-term traffic lane closures
- Temporary pedestrian detours

Summary of Lakeshore East Joint Corridor Early Works



Lakeshore East Joint Corridor Early Works Scope of Work Summary



Future station



Utility relocations along Queen Street, Dundas Street, Logan Avenue and the surrounding side streets.



Upgrade to the rail corridor, including excavation of the existing embankment, installation of new drainage infrastructure, installation of pre-cast concrete retaining walls and backfill of the corridor.



Removal of existing and construction of new GO Bridges at Queen Street East, Dundas Street East and Logan Avenue. Construction of two new Ontario Line bridges at Dundas and Logan.



Realignment of the existing GO tracks, construction of a fourth GO track, and preparation works for eastbound and westbound Ontario Line tracks.



Construction of noise barrier walls to mitigate the impact of the railway on adjacent properties.



Construction of retaining walls for construction of the future Ontario Line stations: Riverdale-Leslieville station and Gerrard station.

Overview | Bridges Redevelopment

