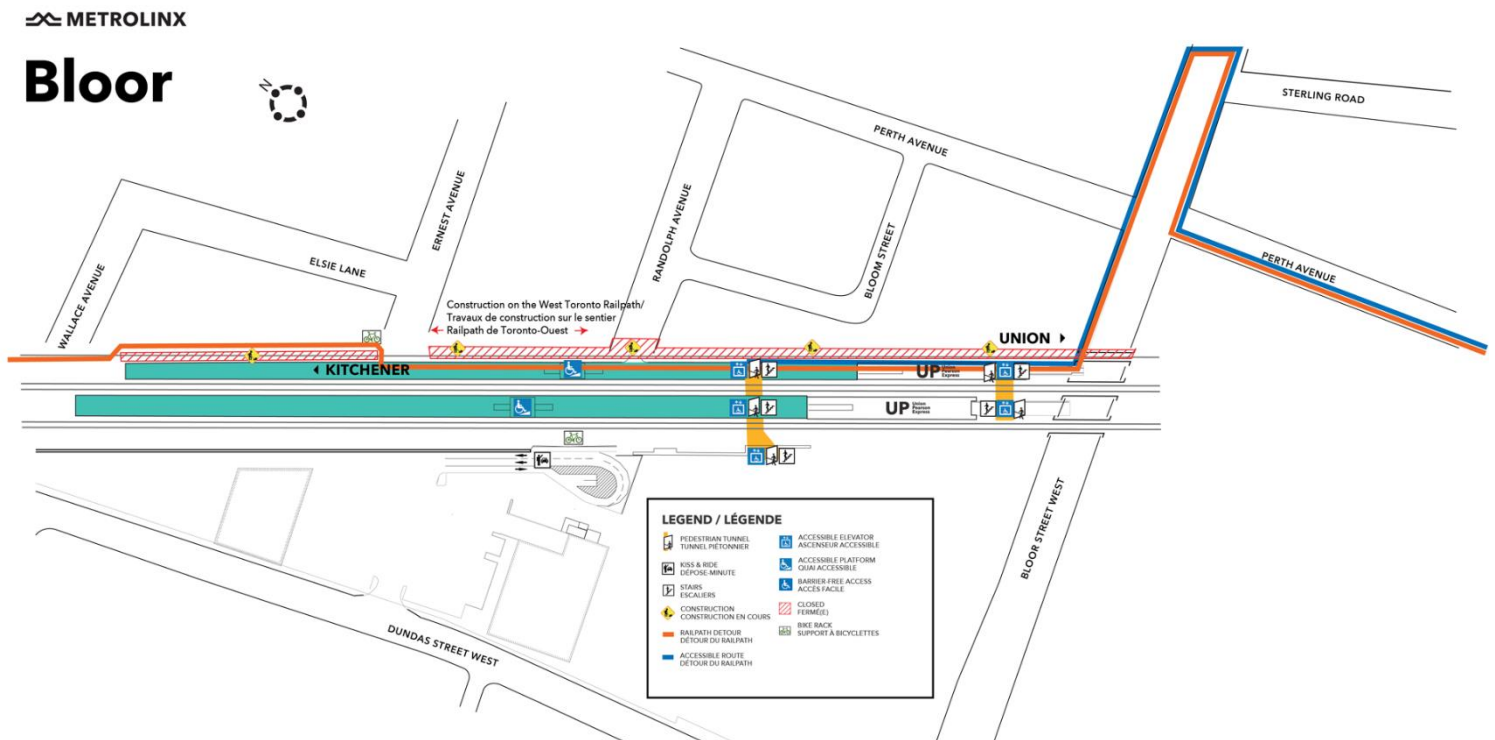


West Toronto Railpath Path Detour Update

August 2023



Project Overview

GO service is expanding to serve you better - with more frequent service, more stations, cleaner technology, and more connections. Across the entire network, our goal is to deliver over 10,000 train trips a week - so you won't need a schedule because you know the next train will be coming soon. GO Expansion will transform the GO rail network from a commuter service into an all-day, rapid system.

Metrolinx will be building a new track on the Kitchener GO line, next to the West Toronto Railpath. Part of this work will include construction of a new entrance to Bloor GO Station, a new community park at Ernest Avenue, and a realignment of the Railpath, on behalf of the City of Toronto.

What You Need to Know

The new Railpath connection to Perth Avenue/Sterling Road has opened. To complete the path realignment and noise wall installation work south of Bloor Street, the Railpath closure will be extended from Bloor St to the new Perth Ave/Sterling Rd connection. Look for new signage to guide you around the detour.

WHAT TO EXPECT

- Beginning August 21, a new detour will be in effect via Perth Avenue and will remain in effect for approximately one year.
- The Railpath closure will be extended from Ernest Avenue to a new connection at the Perth Avenue and Sterling Road intersection.
- Barrier-free access to the GO Station and Railpath will be available at the Union-Pearson (UP) Express entrance on the North side of Bloor Street.

HOURS OF WORK

- The majority of work will take place between 7:00 a.m. and 7:00 p.m. on weekdays.
- These dates are tentative and may be subject to change due to weather or unforeseen circumstances
- Work will be conducted as quickly and efficiently as possible to minimize disturbances, but residents and businesses near the rail corridor can expect to hear noise caused by trucks, excavators, and drilling machinery.

DETOUR DIRECTIONS

Travelling south on the Railpath towards Bloor Street

1. Use the ramp or stairs at Ernest Avenue to access the Bloor GO Station platform
2. Head towards the UP Express staircase and elevator located at the south end of the station. Look for the black columns and wood ceiling
3. Take the staircase or elevator to the lower level and exit the station doors onto Bloor Street.
4. Turn left towards Symington Avenue. At Symington, cross to the South side of Bloor, head West and turn left onto Perth Ave.
5. At the South end of Perth Avenue, turn right towards the new Railpath connection.

Travelling north on the Railpath towards Bloor Street

1. Head north on the Railpath until reaching the new connection to Perth Avenue/Sterling Road.
2. Turn right and head North on Perth Ave towards Bloor Street.
3. Turn right towards Symington Ave and cross to the North side of Bloor St, then turn left towards Bloor GO Station.
4. Use the first set of doors located under the bridge, on your right side, to access the Bloor GO/UP Express Station.
5. Take the elevator or staircase to access the platform level
6. Head to the north end of the platform and re-access the Railpath using the ramp or stairs at Ernest Avenue

This notice can be translated into a different language upon request by emailing us at TorontoWest@metrolinx.com

Cet avis est disponible en français sur demande. Si vous êtes intéressé, veuillez envoyer un courriel à TorontoWest@metrolinx.com

Metrolinx Toronto West Community Engagement Team
Contact Us:

✉ Write to us at: TorontoWest@Metrolinx.com

Tel: 416-202-6911

🐦 Find us on Twitter [@GOExpansion](https://twitter.com/GOExpansion)

🌐 Visit the website: www.metrolinx.com