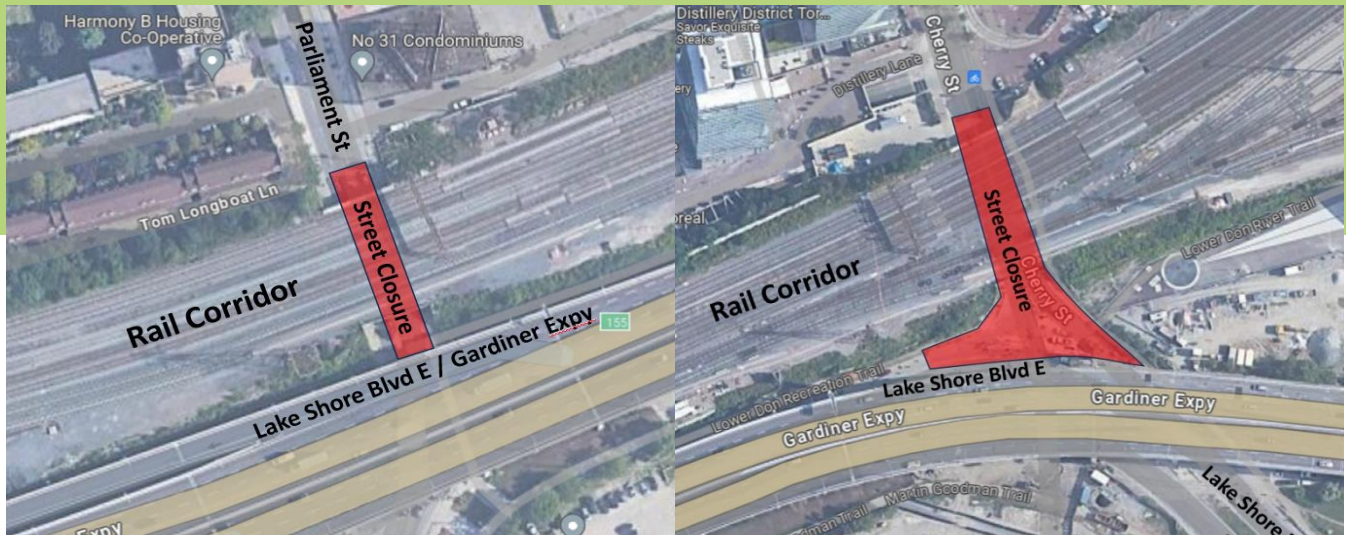


# Overnight Utility Bridge Work - Cherry Street and Parliament Street Lane Closures



Start date: July 29<sup>th</sup>, 2024

End date: August 2024

## Overview

Utility relocations have been underway along the rail corridor as part of the enabling work for the GO Expansion OnCorridor Works Project. The above-ground utility cables are being replaced with an underground utility duct bank spanning from the Esplanade Transformer Station to Don Yard. Where the duct bank reaches Parliament Street and Cherry Street, the hydro utility cables will be supported by utility bridges. The utility bridges have recently been installed south of the rail corridor at Parliament Street and Cherry Street. The remaining activities to complete the installations include additional painting and louver installations.

## What is happening?

Starting July 29<sup>th</sup>, work crews will be present on Cherry Street to complete additional painting and louver installation on the utility bridges. Following the completion at Cherry Street, crews will mobilize to Parliament Street to complete the same work. This work will require lane closures to allow the workers to access the work area and to provide a safe work zone. To reduce the impact of these lane closures, these activities will take place overnight, restricting traffic on one street at a time, and one direction at a time at both Cherry Street and Parliament Street between Lakeshore Blvd E and north of the rail bridge into August 2024. Below is the sequencing:

Cherry Street and Lake Shore Closure Schedule				
Stage	Area Closed	Duration	Time	Notes
1	Northbound road, bicycle lane and sidewalk	July 29 <sup>th</sup> , 2024 – August 2 <sup>nd</sup> , 2024	21:00 - 05:00	2-way traffic maintained in a single lane using paid duty officers and traffic flagmen
2	Southbound road, bicycle lane and sidewalk	August 5 <sup>th</sup> , 2024 – August 9 <sup>th</sup> , 2024	21:00 - 05:00	2-way traffic maintained in a single lane using paid duty officers and traffic flagmen

Parliament Street and Lake Shore Closure Schedule				
Stage	Area Closed	Duration	Time	Notes
1	East northbound lane and sidewalk	August 12 <sup>th</sup> , 2024 – August 16 <sup>th</sup> , 2024	21:00 - 05:00	2-way traffic maintained with 1 live lane in each direction
2	East southbound lane and west northbound lane	August 19 <sup>th</sup> , 2024 – August 23 <sup>rd</sup> , 2024	21:00 - 05:00	2-way traffic maintained with 1 live lane in each direction
3	West northbound lane and sidewalk	August 26 <sup>th</sup> , 2024 – August 30 <sup>th</sup> , 2024	21:00 - 05:00	2-way traffic maintained with 1 live lane in each direction

Directional signage will be used to assist pedestrians through this area.

### Questions

If you have any questions or concerns about this work, please contact us any time via email at [TorontoEast@metrolinx.com](mailto:TorontoEast@metrolinx.com) or by telephone at (416) 202-3900.

For more information on GO Expansion in your community, visit our website at [Metrolinx.com/GoExpansion](https://www.metrolinx.com/GoExpansion)

Toronto East Community Engagement staff works diligently in keeping all residents informed of our project updates and associated work impacts. We encourage all residents to subscribe to our weekly e-newsletter.



Please scan the enclosed QR Code and select Toronto East from the menu. We appreciate your ongoing patience and understanding of this necessary work.

Please note - dates are pending approval and are subject to change.

#### Contact Us:

✉ Write to us at: [torontoeast@metrolinx.com](mailto:torontoeast@metrolinx.com);

☎ By telephone (416) 202-3900

🐦 Find us on Twitter [@GOExpansion](https://twitter.com/GOExpansion)

🌐 Visit the website: [www.metrolinx.com/projects-and-programs/go-expansion](https://www.metrolinx.com/projects-and-programs/go-expansion)

✉ Disponible en français sur demande. Si vous êtes intéressé, veuillez envoyer un courriel à: [torontoeast@metrolinx.com](mailto:torontoeast@metrolinx.com)