

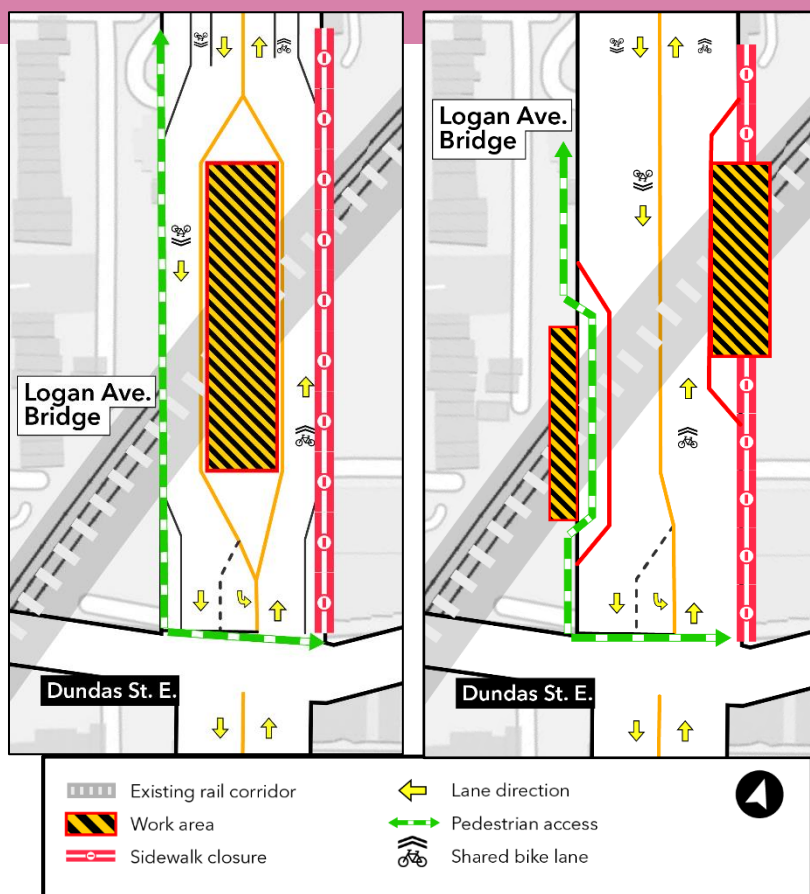
Abutment construction at the Logan Avenue bridge

Expected start date: As early as Monday, July 15, 2024

Expected duration: Three (3) months

Hours of work: Monday - Friday, from 7 a.m. - 5 p.m. and periodic Saturdays between 7 a.m. - 5 p.m.; large equipment will be delivered to the site as early as 5 a.m.

Extended hours: Construction crews may be required to work periodically between 6 a.m. - 11 p.m. to complete critical work



What is happening?

- As early as Monday, July 15, 2024, construction of new bridge abutments at Logan Avenue will begin.
- To support construction, a drill rig and crane will be delivered to the site on the east side of Logan Ave. at approximately 5 a.m. on Monday, July 15, 2024.

- As part of this work, a covered pedestrian walkway (scaffolding) will be installed as an additional safety measure, providing further separation between the sidewalk and the work zone.
- Alternating sidewalk closures on Logan Avenue will be required to complete this work safely.
- To complete critical activities, crews may be required to work periodically between 6 a.m. – 11 p.m.

Traffic and pedestrian details

- Alternating sidewalk closures on Logan Avenue will be required to complete this work safely; **at least one sidewalk will remain open at all times.** Pedestrians are encouraged to cross at designated crosswalks only and follow construction signage posted in the area.
- Crews will do their best to reopen the sidewalks at the end of each workday.
- Cyclists will need to share the road with vehicles while travelling through this area. Share the road signs will be posted to guide cyclists. Drivers are reminded to slow down and allow cyclists to safely merge into the traffic lane. Do not attempt to pass cyclists.
- Traffic may be stopped for short durations during lifting operations or to facilitate the safe entry/egress of construction equipment.
- Traffic lanes may shift slightly from the center to accommodate the work areas.
- One traffic lane in each direction will be maintained on Logan Avenue.

What to expect

- Construction activities will include drilling, concrete pours, and rebar installation.
- Abutments are the structures located at each end of a bridge, that connect the bridge to the ground, and support the weight of the bridge deck. New wider abutments are being constructed to replace the demolished older ones.
- Noise and vibration from construction equipment including drill rigs, concrete trucks, cranes, loaders, and other heavy machinery can be expected.
- Noise mitigation measures, including noise barriers and coverings, will be implemented as required.
- Clear signage will be in place to direct vehicles, pedestrians, and cyclists.
- Traffic barrels, fencing, and barriers will be in place to separate and secure work zones.
- Work may be delayed due to weather conditions or unforeseen circumstances.

About the project

- 15.6-kilometre subway line that will make it faster and easier to travel within Toronto and beyond.
- 15 stops and more than 40 transit connections, including GO, TTC, and more.
- Approximately 30 minutes from one end of the line to the other.
- 28,000 fewer cars on the road each day.

Contact us:

Call us 24/7 at: [416-202-5100](tel:416-202-5100)

Write to us at: ontarioline@metrolinx.com

Find us on Twitter, Facebook, and

Instagram: [@ontarioline](https://www.instagram.com/ontarioline)

Visit the website:

www.metrolinx.com/ontarioline

Visit our community offices:

770 Queen Street East (near Queen & Broadview)

General hours:

Mondays, Tuesdays, and Fridays: 9 a.m. to 5 p.m.

Wednesdays and Thursdays: 10 a.m. to 6 p.m.

Thorncliffe Park:

East York Town Centre

45 Overlea Blvd., Toronto, ON M4H 1C3

Unit 153 (across from the Rogers store)

General hours:

Monday to Friday, 9 a.m. to 5 p.m.