

Ontario Line

# 24-hour sewer replacement and relocation between Cosburn and Gowan

**Expected start date:** As early as July 8, 2024

**Duration:** Approximately three (3) months

**Hours of work:** Monday to Saturday, 24 hours a day

Interested in  
signing up for  
digital  
construction  
notices?

Scan the QR code  
to join the list.



## What is happening?

- To accommodate future excavation and construction of Cosburn Station on the Ontario Line, the existing sewer under Pape Ave will be relocated to the laneway west of Pape Ave south of Cosburn Ave. The new sewer will be constructed using a micro-tunnelling machine under the laneway.
- The work will be completed over the course of approximately three (3) months, through five (5) primary phases.
  - Phase One and Phase Two will take approximately two (2) months to complete.
    - Phase 1A will include the full closure of Gowan Ave from Pape to west of the laneway, as well as a section of the laneway north of Gowan. During this phase, there will be two stages of lane occupancies on Pape Ave at the intersection of Pape Ave and Gowan Ave. During this phase sewer infrastructure will be replaced on Gowan Ave and connected to the existing sewer on Pape Ave.
    - Phase 1B will continue the closure of Gowan Ave. During this phase the launch shaft for the micro-tunnelling machine will be constructed and launched.
  - Phase Three will take six (6) days to complete.
    - Phase Three will include the full closure of Gowan Ave, as well as a partial closure of Cosburn Ave, resulting in the full closure of the laneway. During this phase the receiving shaft for the micro-tunneling machine will be built.
  - Phase Four will take 54 hours to complete.
    - Phase Four will include the full closure of Gowan Ave as well as a full closure of Cosburn Ave. During this phase the new sewer infrastructure will be connected with the existing sewer infrastructure at Cosburn Ave.
  - Phase Five will take up to one week to complete.
    - Phase Five will involve a partial closure of Cosburn Ave for the installation of the watermain gate valve.

- Work will involve the use of an excavator, a front-end loader, skid steers, shoring boxes, concrete trucks and dump trucks. During micro-tunnelling work, a crane, micro-tunnel boring machine, and associated equipment like generators and water tanks will be used.
  - Nearby residents and businesses can expect noise and vibration from construction activities.

## What to expect?

**Phase One** - To replace sewer infrastructure on Gowan Ave and connect it to Pape Ave, there will be a full closure of Gowan Ave from Pape to west of the laneway, and two stages of lane occupancies on Pape Ave. The laneway will remain accessible from Cosburn Avenue.

- **Phase 1A** [Figure 1] - The centre lanes of Pape Ave will be closed.
  - One lane of traffic in each direction will be maintained on Pape Ave.
  - Access to Gowan Ave from Pape Ave will continue to be restricted.
  - Pedestrians will be able to cross at the north-south crosswalk on the west side of Pape Ave at Cosburn Ave, however the north sidewalk on Gowan Ave will be closed between the laneway and Pape Ave.
- **Phase 1B** [Figure 2] - Both lanes of southbound traffic on Pape Ave will be closed.
  - One lane of traffic in each direction will be maintained on Pape Ave.
  - Pedestrians will not be able to cross at the north-south crosswalk on the west side of Pape Ave at Gowan Ave. Pedestrians will be directed to cross west of the work zone on Gowan Ave.

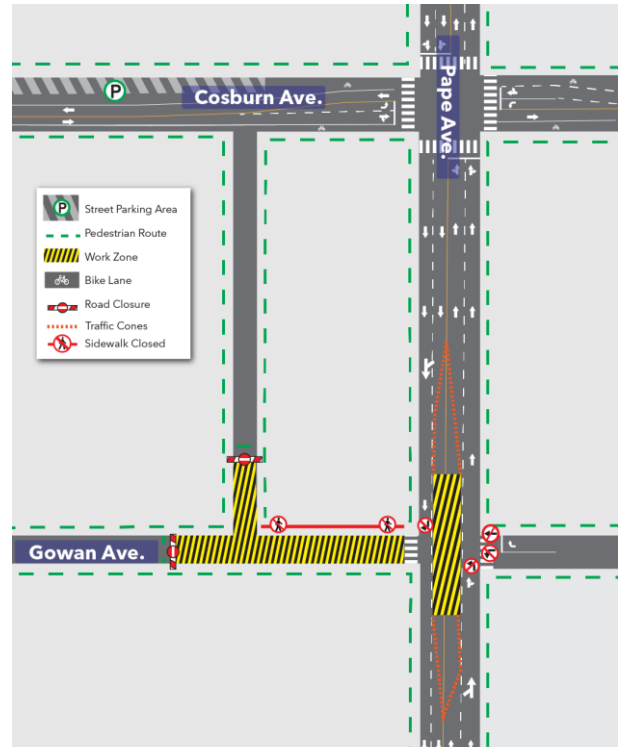


Figure 1: Phase 1A

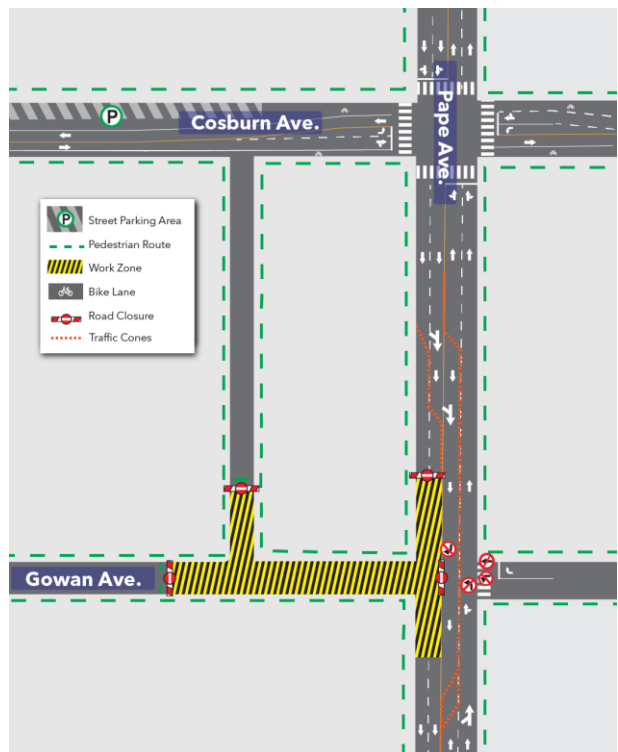


Figure 2: Phase 1B

**Phase Two** [Figure 3] - To construct the launch shaft for the micro-tunneling machine, Gowan Ave will be closed from Pape Ave to west of the laneway including a segment of the laneway north of Gowan Ave.

- The laneway will remain accessible from the north entrance off Cosburn Ave.
- Approximately four spaces of street parking will be removed on the north side of Gowan Ave.
- Access from the south of the laneway onto Gowan Ave will be restricted.
- Pedestrians crossing the laneway at Gowan Avenue will be redirected north, around the work zone.

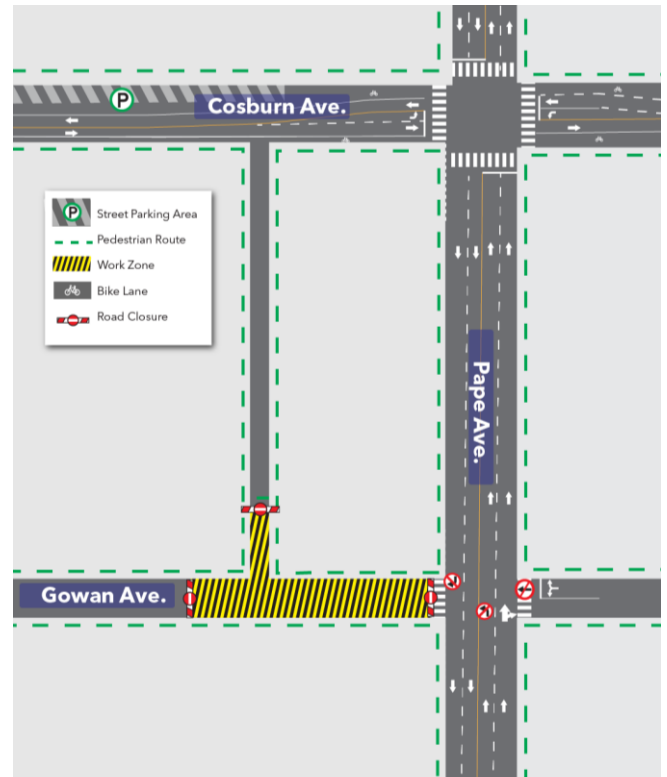


Figure 3: Phase Two

**Phase Three** [Figure 4] - To construct the receiving shaft for the micro-tunneling machine.

- There will be a full closure of Gowan Ave, as well as a partial closure of Cosburn.
  - One lane of traffic in each direction will be maintained on Cosburn Ave.
  - Bicycles and vehicular traffic will share the available lane in a single file.
  - Pedestrians will not be able to cross at the crosswalk on the south side of Cosburn Ave north of the of the laneway, pedestrians will be direct to cross north of the Work Zone.

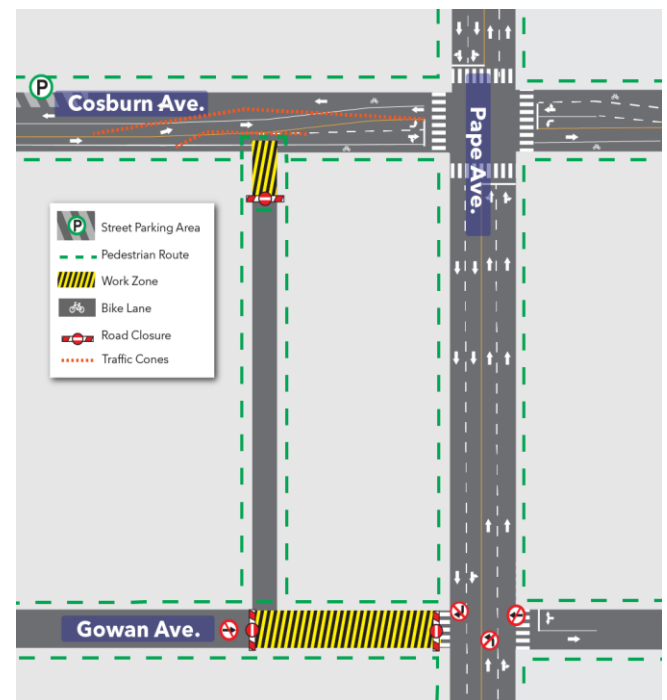


Figure 4: Phase Three

**Phase Four** [Figure 5] - To connect the existing sewer infrastructure at Cosburn Ave to the new sewer infrastructure and install a new manhole.

- There will be a 54-hour full closure of Cosburn Ave.
- Pedestrian access will be restricted south of the work zone on Cosburn Ave, pedestrian access will be maintained on the north sidewalk on Cosburn Ave.
- Separate notice will be provided in advance of the 54-hour closure.

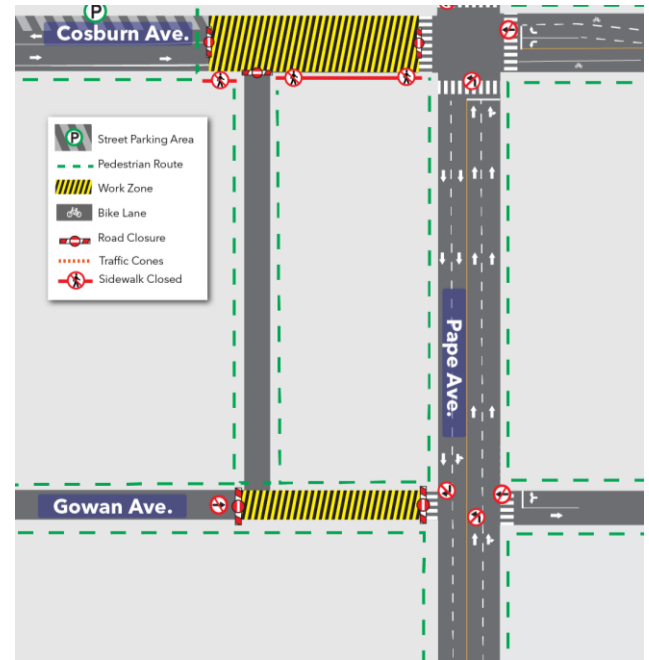


Figure 5: Phase Four

**Phase 5** [Figure 6] - To install the gate valve.

- Cosburn Ave will be partially closed.
  - One lane of traffic in each direction will be maintained on Cosburn Ave.
  - Left turns will not be permitted from neither the laneway west of Pape Ave south of Cosburn at the Cosburn exit, nor the laneway west of Pape Ave north of Cosburn at the Cosburn exit.

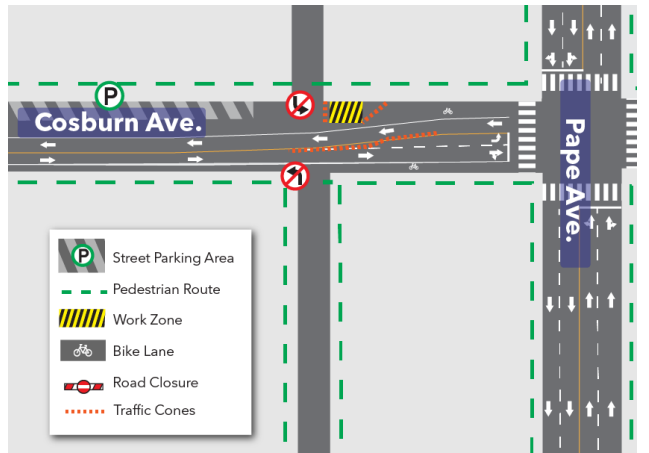


Figure 6: Phase Five

**Note:**

- All necessary construction permits have been obtained.
- Work may be postponed or rescheduled due to unforeseen circumstances.
- For more information about upcoming work, please see [metrolinx.com/ontarioline](http://metrolinx.com/ontarioline) or sign up for the e-newsletter.

**Contact us:**  
 Call us 24/7 at: [416-202-5100](tel:416-202-5100)  
 Write to us at:  
[ontarioline@metrolinx.com](mailto:ontarioline@metrolinx.com)  
 Find us on Twitter, Facebook, and Instagram: [@ontarioline](https://www.instagram.com/ontarioline)  
 Visit the website:  
[www.metrolinx.com/ontarioline](http://www.metrolinx.com/ontarioline)

**Visit our community offices:**  
**Riverside:**  
 770 een St. E, Toronto, ON, M4M 1H4  
 General hours:

- Mondays, Tuesdays and Fridays: 9 a.m. to 5 p.m.
- Wednesdays and Thursdays: 10 a.m. to 6 p.m.

**Thornciffe Park:**  
 East York Town Centre  
 45 Overlea Blvd., Toronto, ON M4H 1C3  
 Unit 153 (across from the Rogers store)  
 General hours

- Monday to Friday: 9 a.m. to 5 p.m.

Disponible en français sur demande. Si vous êtes intéressé, veuillez envoyer un courriel à [ontarioline@metrolinx.com](mailto:ontarioline@metrolinx.com).