

St. Clair-Old Weston GO: Notice of Vegetation Removal and Lane Closure

July 2, 2024*

*Date may be rescheduled due to inclement weather or unforeseen circumstances

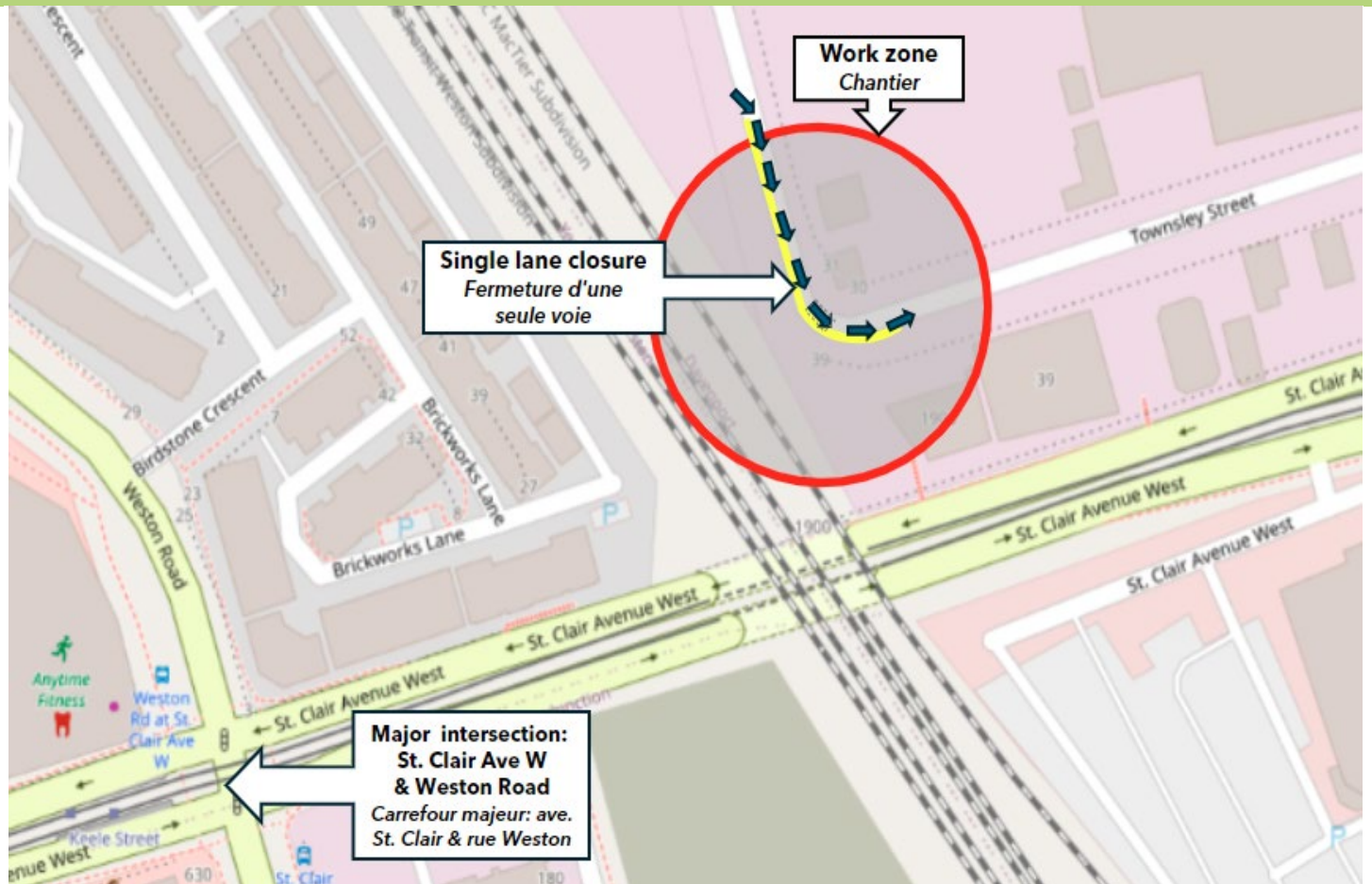


Figure 1: A map showing the approximate work zone within the Kitchener GO corridor as well as the area of the road where the lane closure will occur. Not to scale. For illustrative purposes only. Metrolinx image.

What Is Happening

Preparatory works at the corner of Townsley Street and Union Street will be occurring to ready the site for future construction of the St. Clair-Old West SmartTrack GO Station. The primary work will be the clearing of a minimal amount of vegetation. Residents can expect some noise associated with vegetation clearing. These activities will require a single lane closure at the corner of where Townsley Street meets Union Street. A traffic management plan will be in place.

These activities are necessary to enable future work at the station later in 2024.

Project Overview

SmartTrack is bringing five new GO stations to Toronto, leveraging roughly 40 km of Metrolinx's pre-existing GO rail corridors within Toronto. The program is a collaboration between the Province of Ontario, City of Toronto, and Metrolinx that will transform heavy rail infrastructure in Toronto from a regional commuter service into an urban rapid transit network, expanding your local network, creating new possibilities, and bringing you improved access to locations across the city.

SmartTrack St. Clair-Old Weston GO Station will be located on Union Street, north of St. Clair Avenue West, between Bloor GO Station and the future Mount Dennis GO Station on the Kitchener line.

WHAT TO EXPECT

- Crews will be removing three trees within the Kitchener Rail Corridor. A woodchipper will be used as part of this work.
- There will also be 1-2 trucks at the site of the tree removals.

HOURS OF WORK

- Vegetation removal will occur on Tuesday, July 2 between the hours of 8 AM and 4 PM.
- Dates may be rescheduled due to inclement weather or other unforeseen circumstances.

LOCATION OF WORK

- Tree and vegetation removal will take place within the rail corridor.
- A single-lane closure will occur at the site location. See *Figure 1* on the previous page.

PEDESTRIAN DETAILS

- The work will not impact nearby walkways or sidewalks.

TRAFFIC DETAILS

- A single lane at the corner of Townsley Street and Union Street will be closed. A traffic management plan will be in place.

TRANSIT INFORMATION

- No transit impacts to GO or TTC service.

COMMUNITY ENGAGEMENT

- Metrolinx has a dedicated community engagement team in place that works with residents and businesses in the Toronto West area.
- If you have any questions, please contact us using the information provided below.

Information as of: June 2024

This notice can be translated into a different language upon request by emailing us at TorontoWest@metrolinx.com

Cet avis est disponible en français sur demande. Si vous êtes intéressé, veuillez envoyer un courriel à TorontoWest@metrolinx.com

Contact Us:

- ☎ Call us: 416-202-6911
- ✉ Write to us at: TorontoWest@metrolinx.com
- 🐦 Find us on Twitter [@GOExpansion](https://twitter.com/GOExpansion)
- Visit the website: www.metrolinx.com/stclairoldweston
- Subscribe to our e-blast: www.metrolinx.com/subscribe