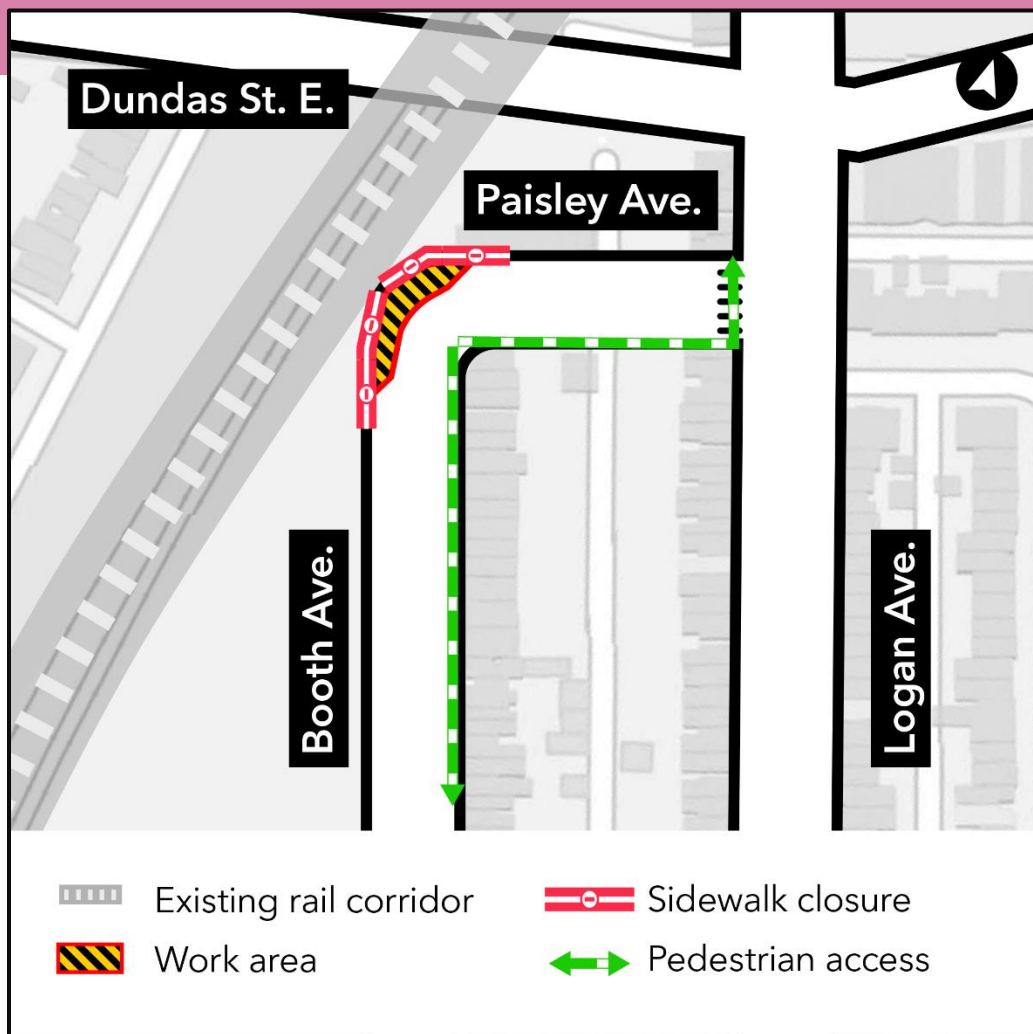


Sidewalk closure at Paisley Ave. and Booth Ave. for retaining wall work

Expected start date: Starting as early as Tuesday, July 16, 2024

Expected duration: Approximately two days

Hours of work: Monday - Friday, between 6 a.m. - 11 p.m.



What is happening?

- As early as Tuesday, July 16, 2024, a portion of the traffic lane and sidewalk at Paisley Avenue and Booth Avenue will be closed to safely complete retaining wall construction (see map above).

- This work is expected to take place on weekdays between 6 a.m. – 11 p.m. for approximately two days.
- Traffic control personnel will be stationed at the intersection on a 24-hour basis to direct vehicles and support pedestrians with navigating around the closure.
- For further details, please refer to the **Traffic and pedestrian details** section below.

Traffic and pedestrian details

- The sidewalk at the north-west corner of Paisley Avenue and Booth Avenue will be closed - the sidewalk at the south-east corner of the intersection will be open to maintain pedestrian access.
- Paisley Avenue and Booth Avenue will be reduced to one lane of traffic at the intersection.
- The road will reopen after each workday.
- The sidewalk will remain closed throughout the duration of the work.
- The roadway and sidewalk will be reinstated upon completion of the work.
- Traffic control personnel will be stationed at the intersection on a 24-hour basis to direct vehicles and support pedestrians with navigating around the closure.

What to expect

- Noise from construction equipment including a hydro-vacuum truck, excavators, trucks, compressor, and other equipment.
- Noisier work will be restricted during the early morning and evening hours to mitigate disruption.
- Crews will remove part of the sidewalk and install granular backfill within the rail corridor.
- Advance signage will be in place to direct vehicles and pedestrians.
- Traffic barrels, fencing, and barriers will be in place to separate and secure work zones.
- Construction equipment and materials will be properly secured within the work zones.
- Traffic control personnel will be present while this work takes place.
- Work may be delayed due to weather conditions or unforeseen circumstances.

About the project

- 15.6-kilometre subway line that will make it faster and easier to travel within Toronto and beyond.
- 15 stops and more than 40 transit connections, including GO, TTC, and more.
- Approximately 30 minutes from one end of the line to the other.
- 28,000 fewer cars on the road each day.

Contact us:

Call us 24/7 at: [416-202-5100](tel:416-202-5100)

Write to us at: ontarioline@metrolinx.com

Find us on Twitter, Facebook, and

Instagram: [@ontarioline](https://www.instagram.com/ontarioline)

Visit the website:

www.metrolinx.com/ontarioline

Visit our community offices:

770 Queen Street East (near Queen & Broadview)

General hours:

Mondays, Tuesdays, and Fridays: 9 a.m. to 5 p.m.

Wednesdays and Thursdays: 10 a.m. to 6 p.m.

Thorncliffe Park:

East York Town Centre

45 Overlea Blvd., Toronto, ON M4H 1C3

Unit 153 (across from the Rogers store)

General hours:

Monday to Friday, 9 a.m. to 5 p.m.