

Ontario Line

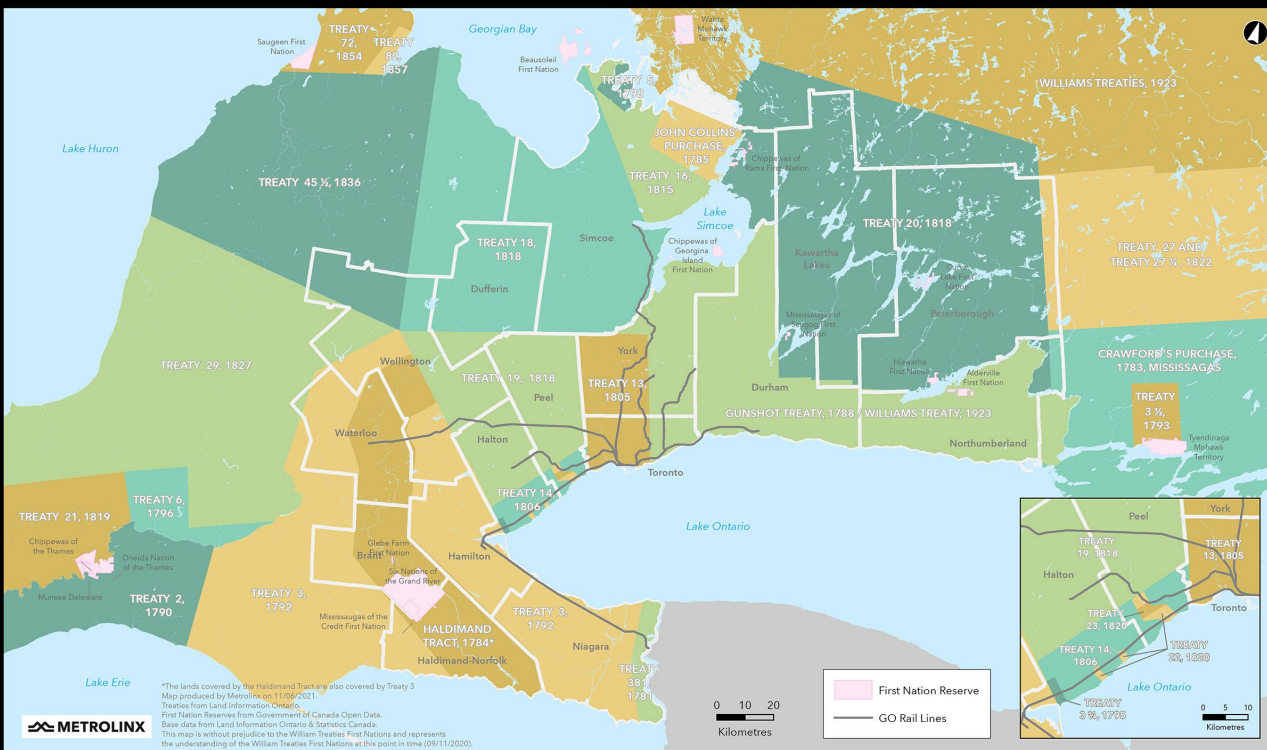
CLC Meeting #14

Pape Avenue Junior Public School

April 30, 2024

Land Acknowledgement

Treaties and Reserves in the Greater Golden Horseshoe



Let us take a moment to acknowledge we are on lands that have been, and continue to be, home to many Indigenous Peoples including the Anishnabeg, the Haudenosaunee and the Huron-Wendat peoples.

We are all Treaty people. Many of us have come here as settlers, as immigrants or involuntarily as part of the trans-Atlantic slave trade, in this generation, or generations past.

We acknowledge the historic and continued impacts of colonization and the need to work towards meaningful reconciliation with the original caretakers of this land.

We acknowledge that Metrolinx operates on territories and lands covered by many treaties that affirm and value the rights of Indigenous communities, Nations and Peoples.

We understand the importance of working towards reconciliation with the original caretakers of this land. At Metrolinx, we will conduct business in a manner that is built on a foundation of trust, respect and collaboration.

AGENDA

1. Welcome

2. Pape Avenue JPS Pick-Up Drop-Off

- PUDO relocation back to Pape - April 22
- Long-term pick-up drop-off solution (Riverdale)

3. Construction Updates – Toronto Hydro

- Bypass installation
- South chamber work
- Trenching and duct bank installation

4. Construction Updates – Sewer Work

- Combined sewer three phases

5. Long-Term Noise Barrier

- Regular noise data

6. Upcoming Activities and Issues Tracker

- May 28 community open house
- CLC expansion

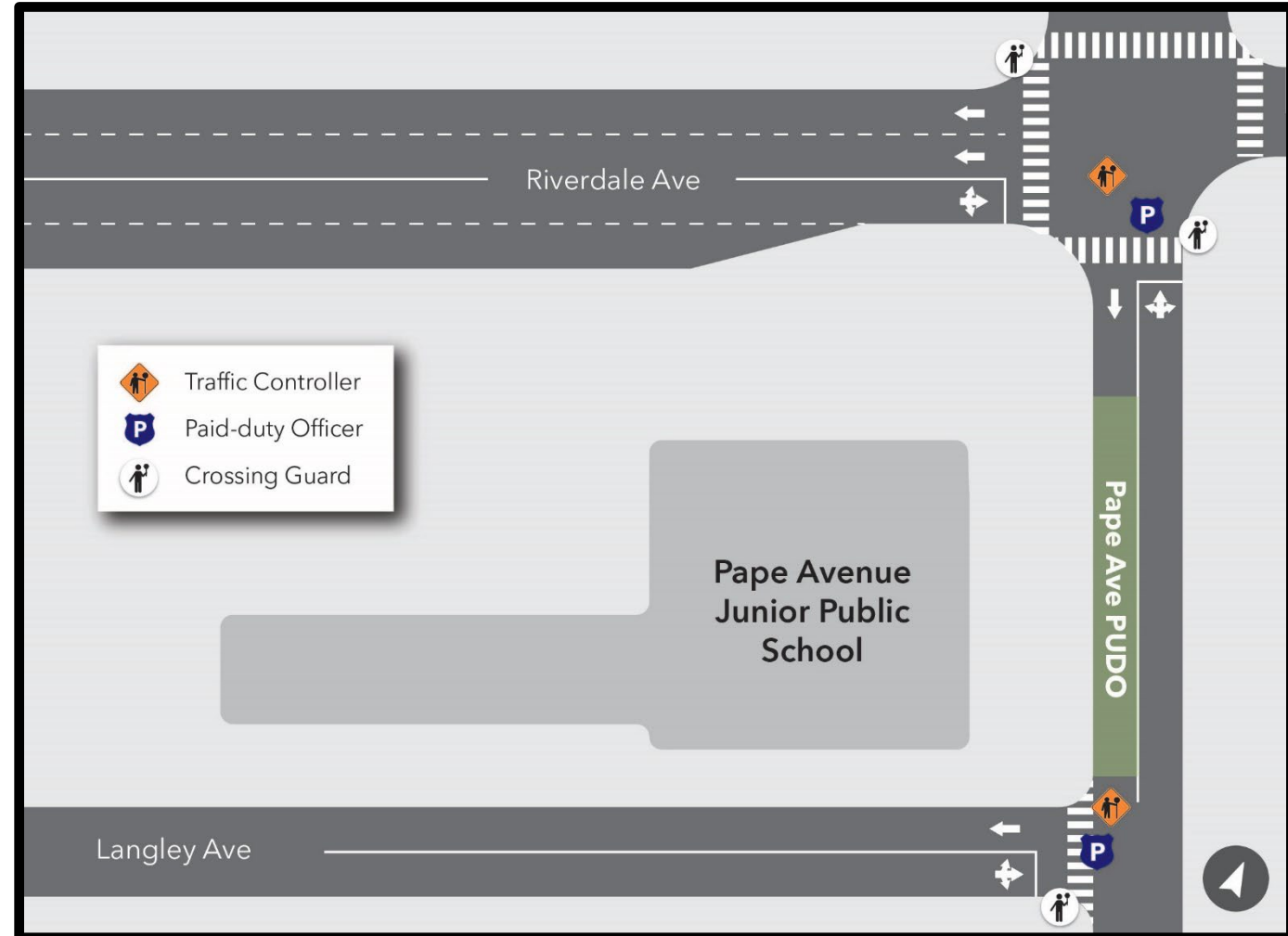
7. Discussion



Pape Avenue JPS Pick-Up Drop-Off

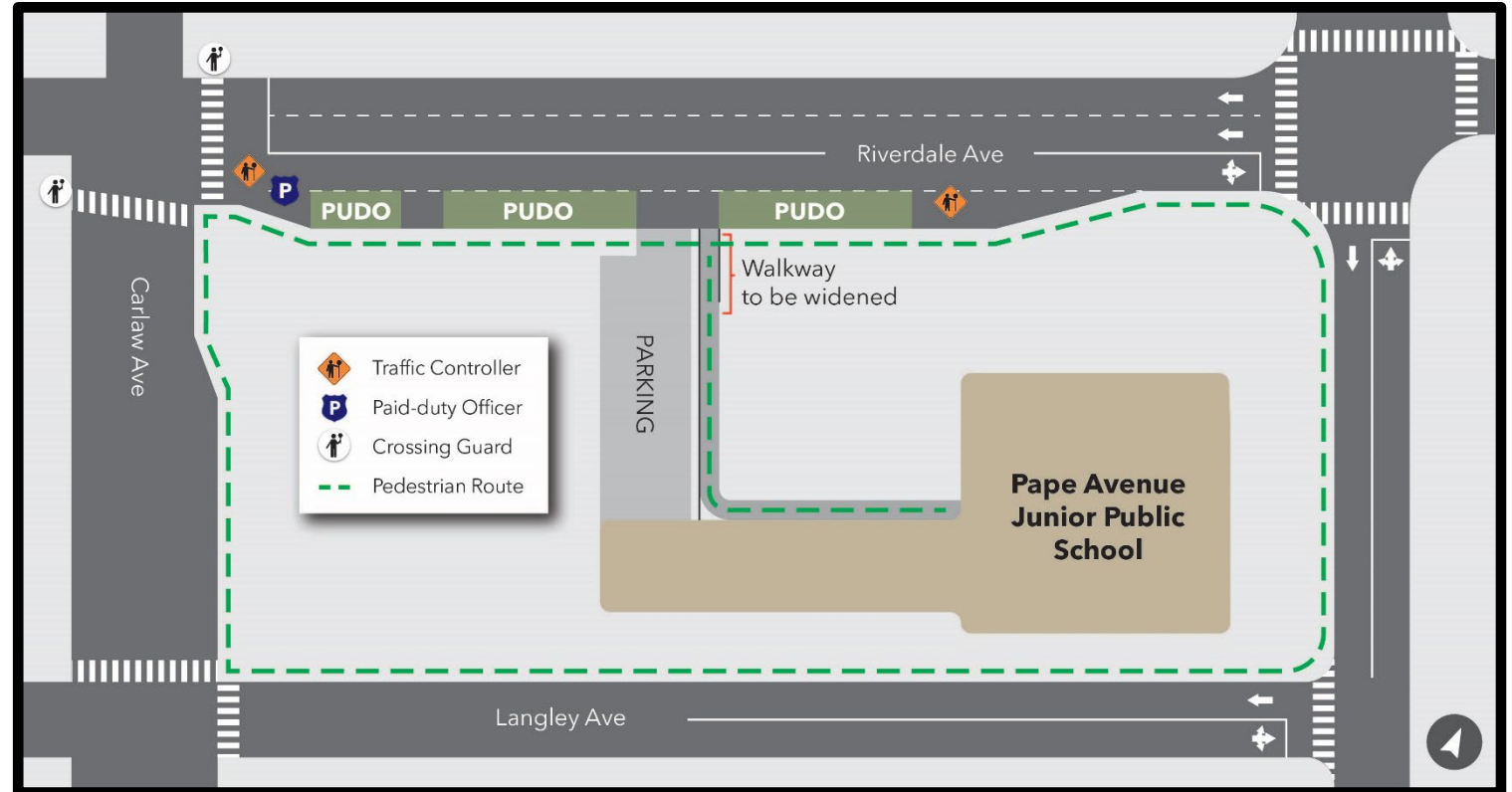
Current Pick-up Drop-off

- As a result of Toronto Hydro works resequencing with South Chamber works happening between late April and June, there are no anticipated impacts to Pape Avenue north of Langley Avenue for the next two months. This allows the school's pick-up drop-off to return to its original location.
- **The pick-up and drop-off will remain in place until at least the end of the school year.** Metrolinx will stay in contact with Pape Avenue Junior Public School and Pape Children's House to keep them informed of plans for a future move to Riverdale Avenue.
- Additional crossing guards, traffic control persons, and paid-duty officers will remain in place during south chamber works.



Riverdale Pick-up Drop-off

- The Riverdale pick-up drop-off will be implemented following the completion of Toronto Hydro's south chamber work. Exact timing will be dependent on Hydro's plans and staging for their trenching work.
- In order to enable safe travel from the pick-up drop-off site to the school, the TDSB will be widening the walkway on the east side of the driveway.
- Crossing guards, traffic control persons, and paid-duty officers will be on site to control traffic and assist where necessary.
- This pick-up drop-off will remain in place until the conclusion of sewer work impacts on Pape Avenue.



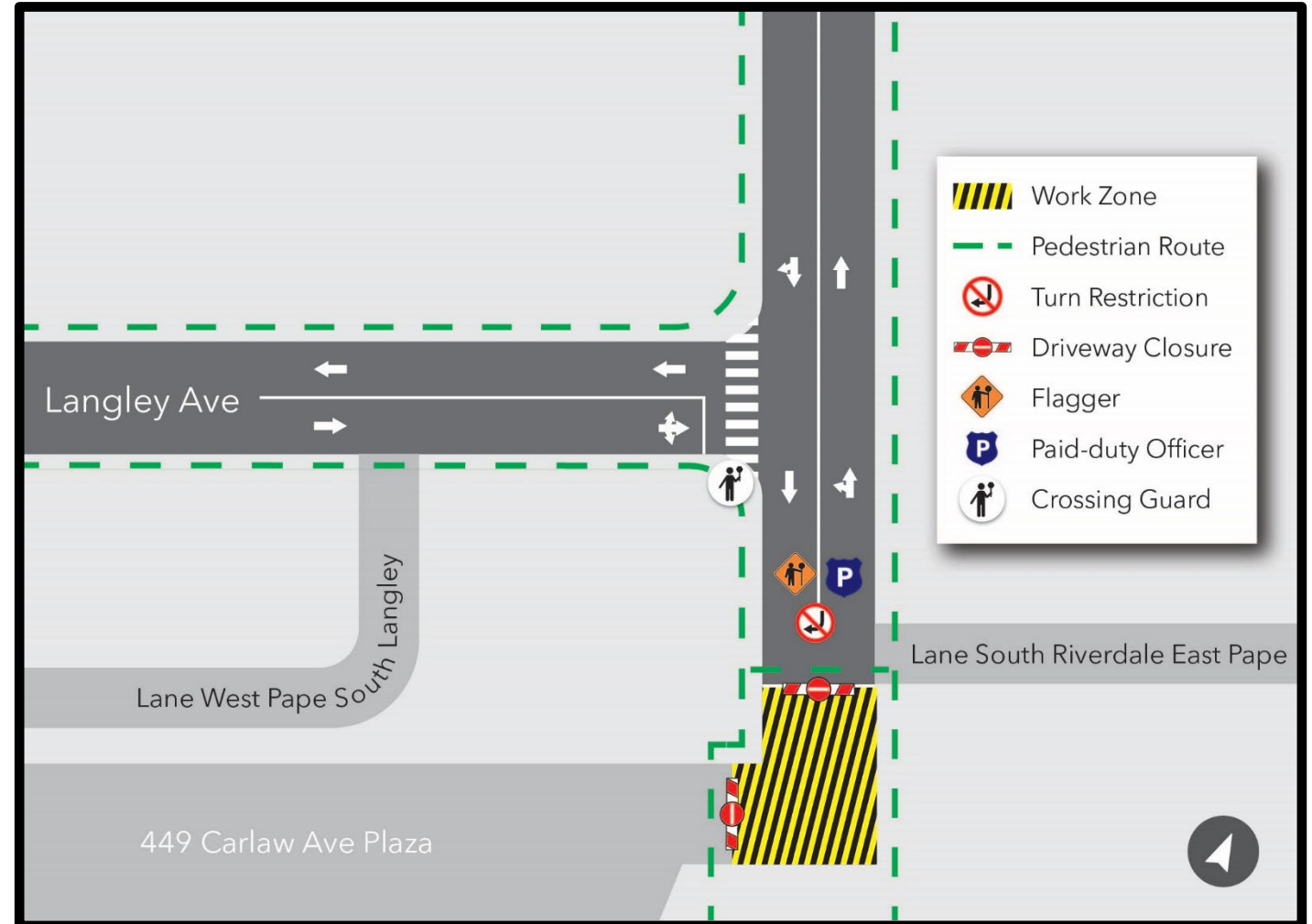
Construction Updates – Toronto Hydro

Resequencing THESL Work

- South chamber work began on April 29 near the entrance to the 449 Carlaw plaza.
- Trenching and duct bank installation on Pape Avenue between the 449 Carlaw plaza entrance and Riverdale Avenue will follow in July after this school year ends.
- This resequencing means that the Pape Avenue JPS pick-up drop-off can remain on Pape Avenue until the end of this school year.

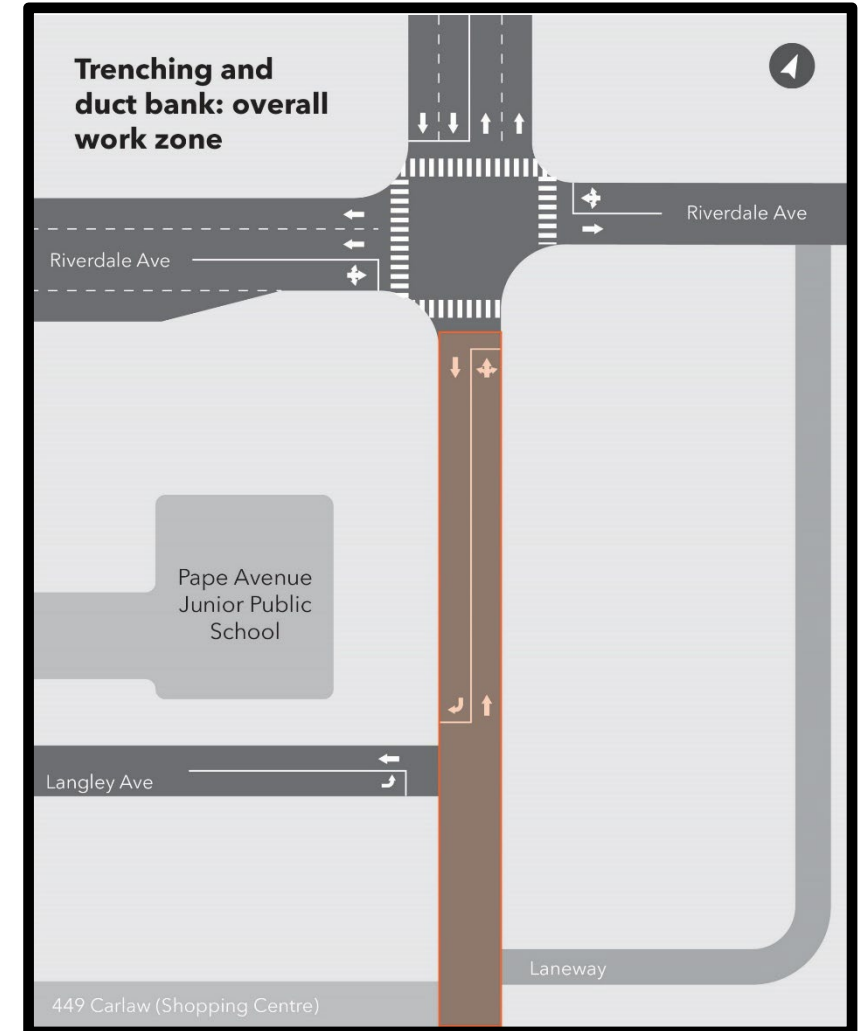
Toronto Hydro – South Chamber

- On April 29, Toronto Hydro began south chamber construction at the driveway to the 449 Carlaw plaza.
- This work will be ongoing for approximately 6-8 weeks.
- This work is similar to the chamber work completed at Pape Avenue and Riverdale Avenue earlier this year.
- Traffic controllers and a paid-duty officer will be on site to guide traffic in the area.
- Access to the pedestrian bridge over the rail corridor will be maintained throughout construction activities.



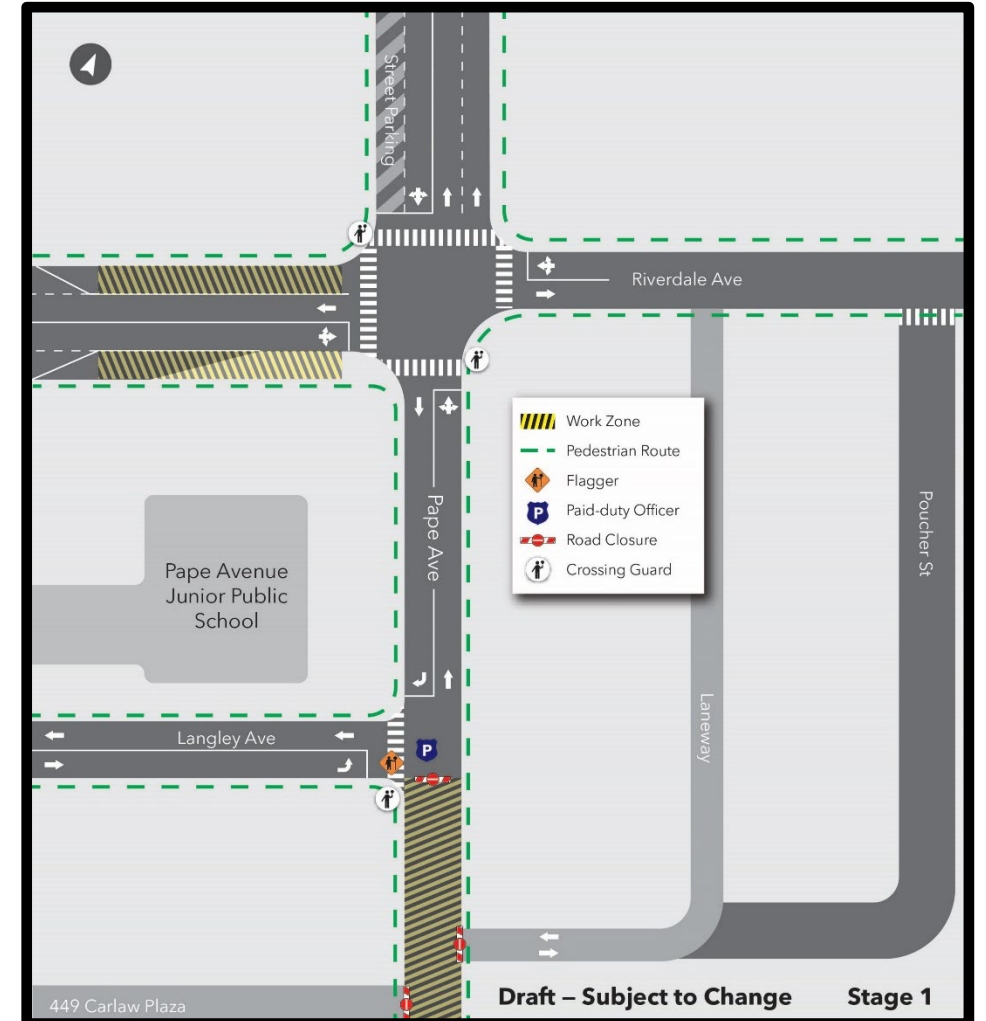
Toronto Hydro – Duct Bank Installation – Summer 2024

- Toronto Hydro will carry out trenching and excavation to install a new duct bank on Pape Avenue this summer, connecting the newly constructed chambers at Riverdale Avenue and at Langley Avenue.
- Due to unanticipated ground conditions discovered during bypass installation, Toronto Hydro, the City and Metrolinx have worked together to create revised staging plans. These plans will involve road closures on Pape Avenue which will happen over the summer.
- As with previous stages, PDOs and traffic controllers will be present.
- This work will take approximately 6 weeks, split into two stages.



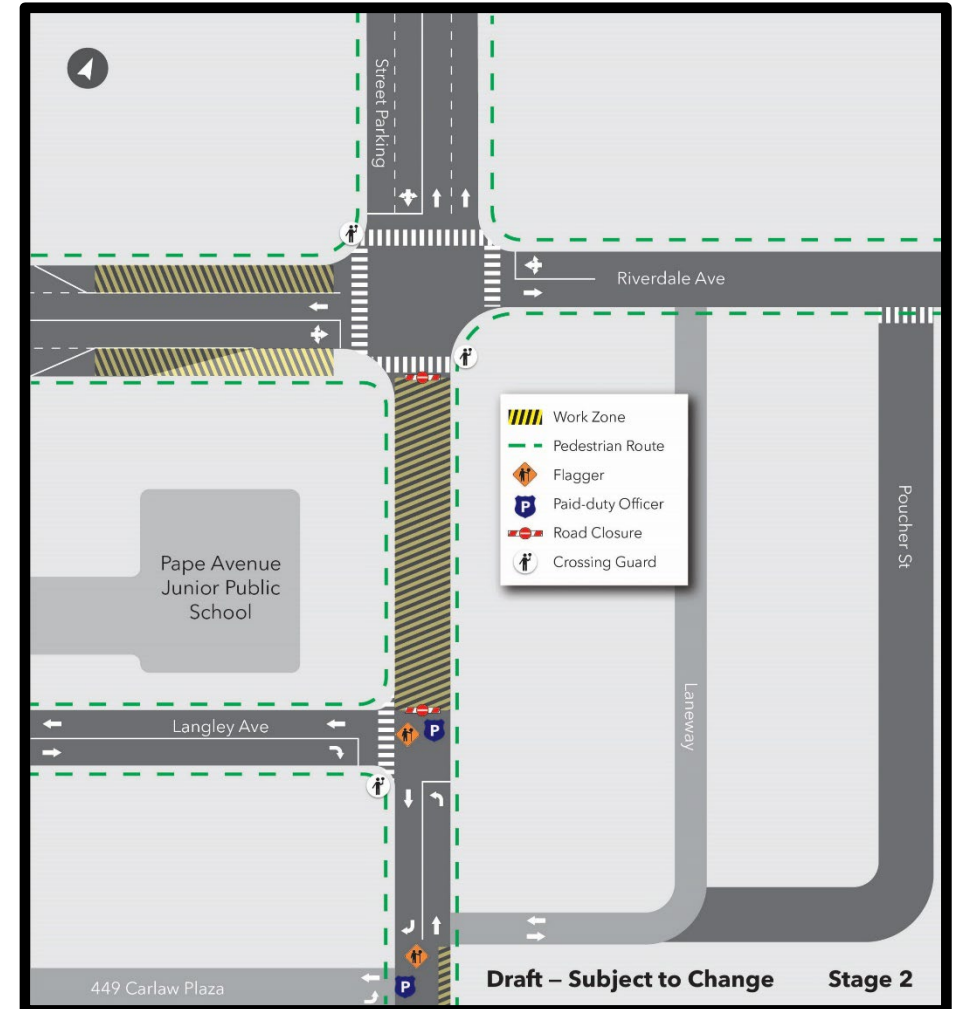
Toronto Hydro Duct Bank Installation – Stage 1

- Stage 1 will involve trenching and duct bank installation on the south end of Pape Avenue, south of Langley.
- Key impacts from Stage 1:
 - Full closure of Pape Avenue south of Langley Avenue
 - No access to either the 449 Carlaw plaza or the laneway east of Pape and south of Langley
 - Laydown areas located in the Riverdale Avenue curb lanes west of Pape Avenue.
- Pedestrian access will be maintained.
- Paid-duty officers and traffic control personnel will be in place to maintain safe traffic flow.
- Work will take approximately two weeks.



Toronto Hydro Duct Bank Installation – Stage 2

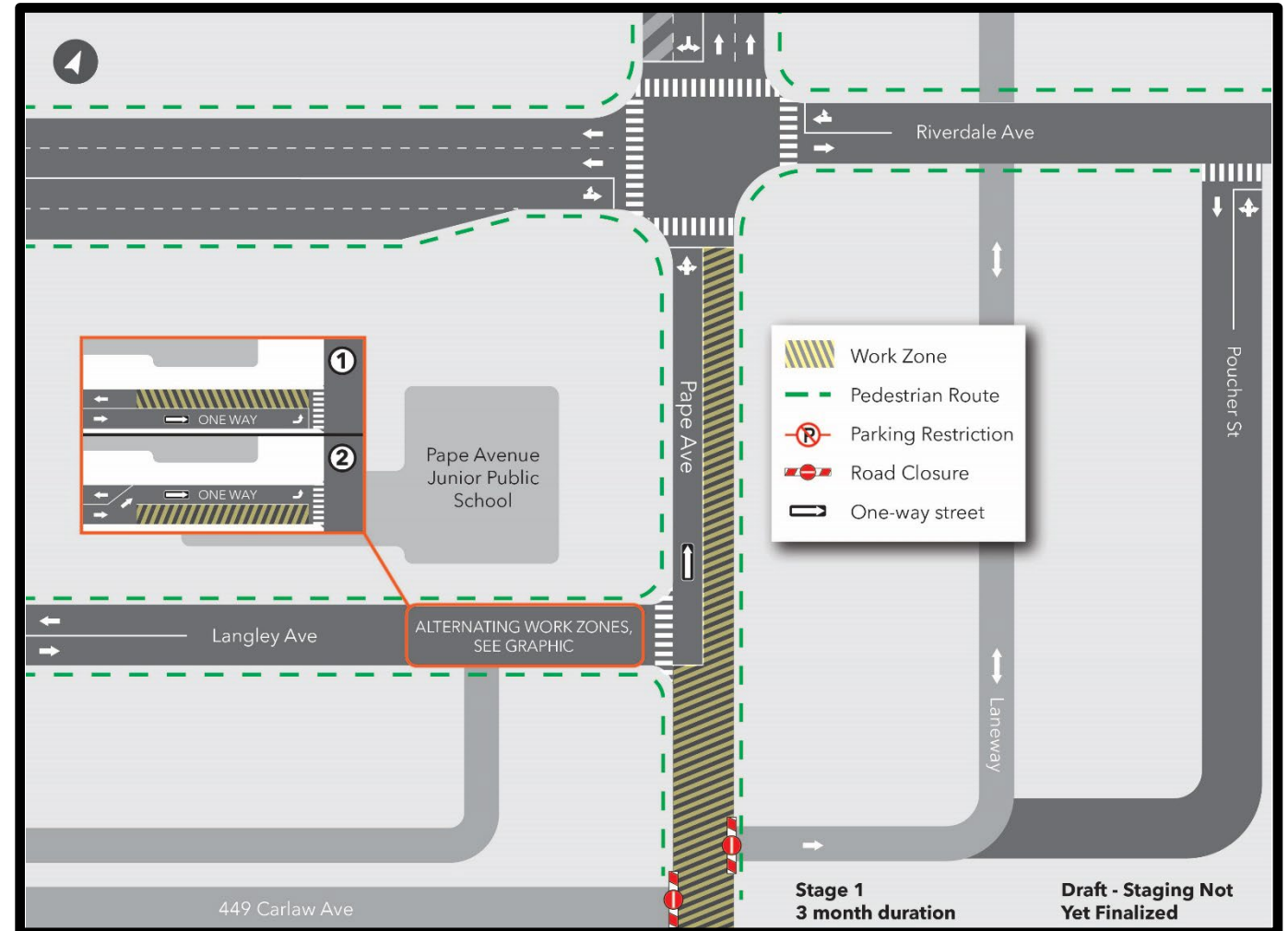
- Stage 2 will involve trenching and duct bank installation on Pape Avenue between Langley and Riverdale.
- Key impacts from Stage 1:
 - Full closure of Pape Avenue between Langley and Riverdale
 - Eastbound traffic on Langley must turn right upon reaching Pape; northbound traffic on Pape must turn left upon reaching Langley
 - Laydown areas located in the Riverdale Avenue curb lanes west of Pape Avenue
 - A small laydown area on the east side of Pape Avenue where the road terminates at the 449 Carlaw Avenue entrance.
- Pedestrian access will be maintained.
- Paid-duty officers and traffic control personnel will be in place to maintain safe traffic flow.
- Work will take approximately four weeks.



Construction Updates – Sewer Work

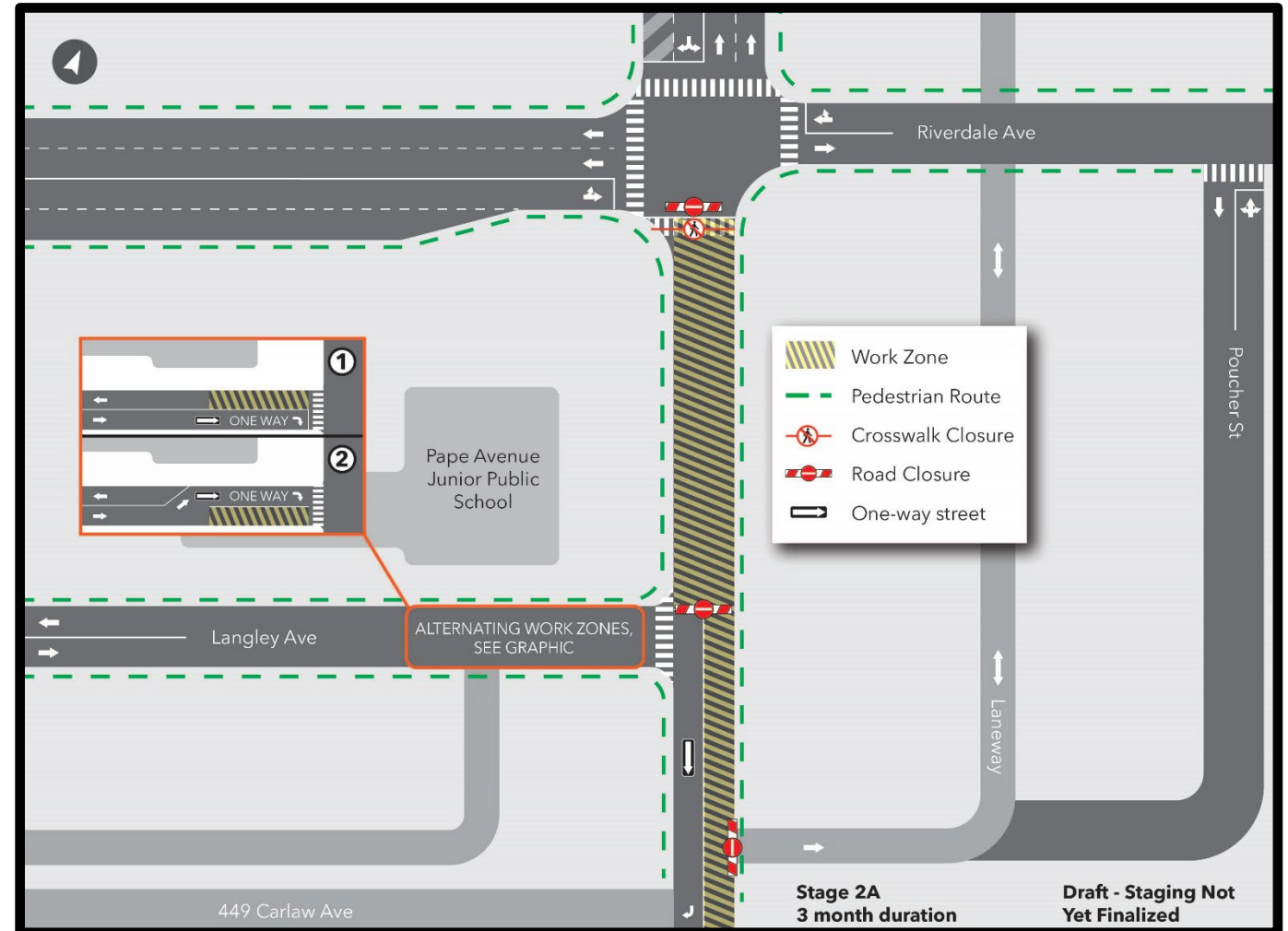
Sewer Relocation Work - Phase 1

- **Works will commence in late summer to install a new combined sewer and water main on Pape Avenue between Riverdale Avenue and the 449 Carlaw plaza and remove the old sewer infrastructure.**
- Phase 1 will be the first of three stages to install a combined sewer down the east side of Pape Avenue. In addition, the relocation of Telus telecommunication lines on Pape Avenue and on Langley Avenue will be wrapped into this phase.
- Key impacts from stage 1:
 - Full closure of Pape Avenue between Langley and 449 Carlaw
 - Pape reduced to one lane northbound between Langley and Riverdale
 - Langley Avenue reduced to one lane south of Pape Avenue JPS
 - East-north one-way traffic from east end of Langley Avenue north to Riverdale Avenue.
 - Street parking removal on Langley Avenue adjacent to the work zone.
- The work zone on Langley will alternate between the north and south side of the road. Pedestrian routes and traffic circulation will remain unchanged.



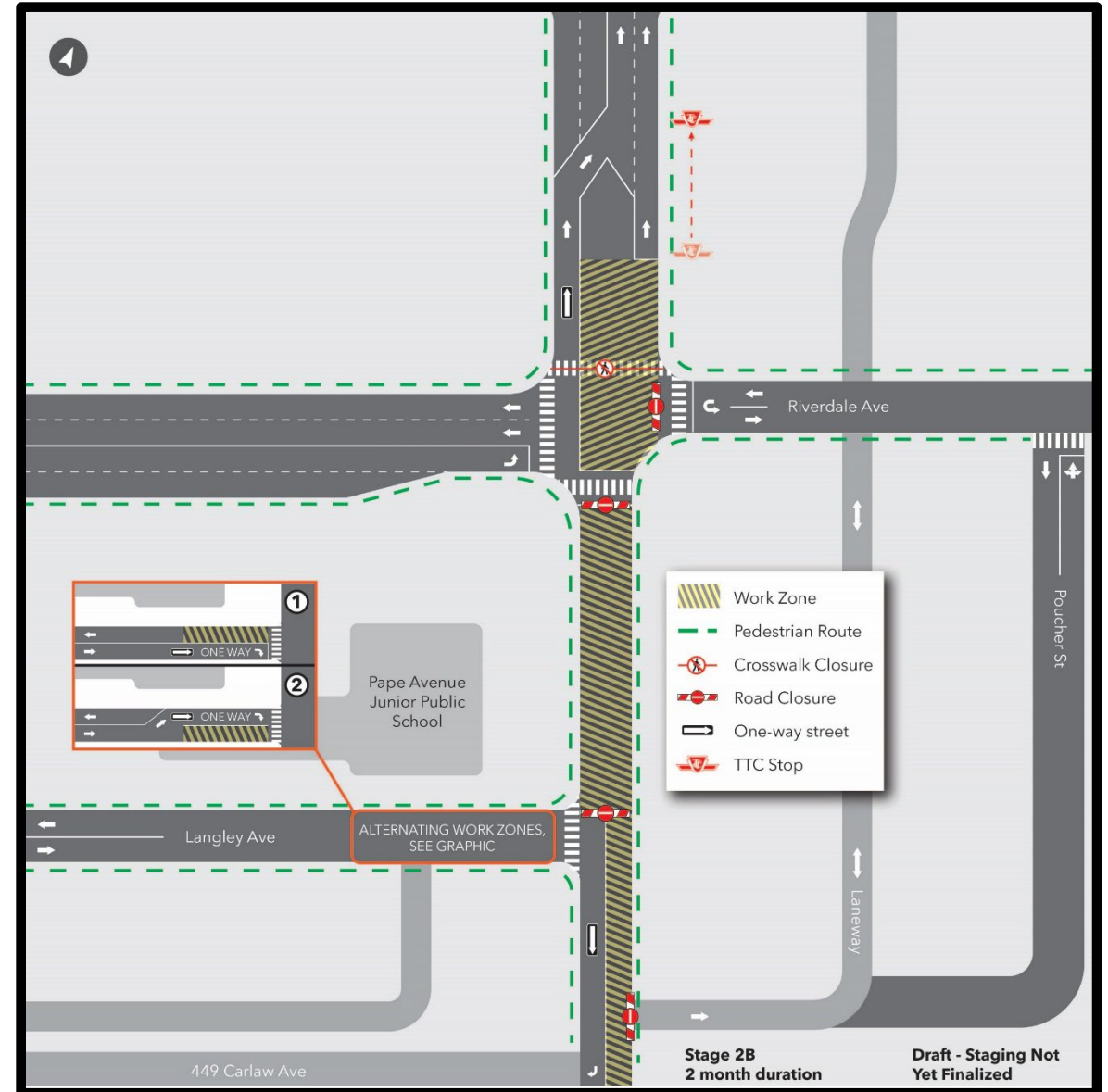
Sewer Relocation Work - Phase 2A

- Phase 2A will continue combined sewer installation and will also mark the start of watermain installation.
- Key impacts from stage 2:
 - Full closure of Pape Avenue between Langley and Riverdale
 - South crosswalk closure at Pape and Riverdale
 - Pape reduced to one lane southbound between Langley and the 449 Carlaw plaza.
 - No vehicular access to the laneway east of Pape and south of Langley
 - Langley Avenue reduced to one lane south of Pape Avenue JPS
 - East-south one-way traffic from east end of Langley Avenue south to 449 Carlaw plaza, with traffic exiting through the plaza
 - Street parking removal on Langley Avenue adjacent to the work zone.
- The work zone on Langley will alternate between the north and south side of the road. Pedestrian routes and traffic circulation will remain unchanged.



Sewer Relocation Work - Phase 2B

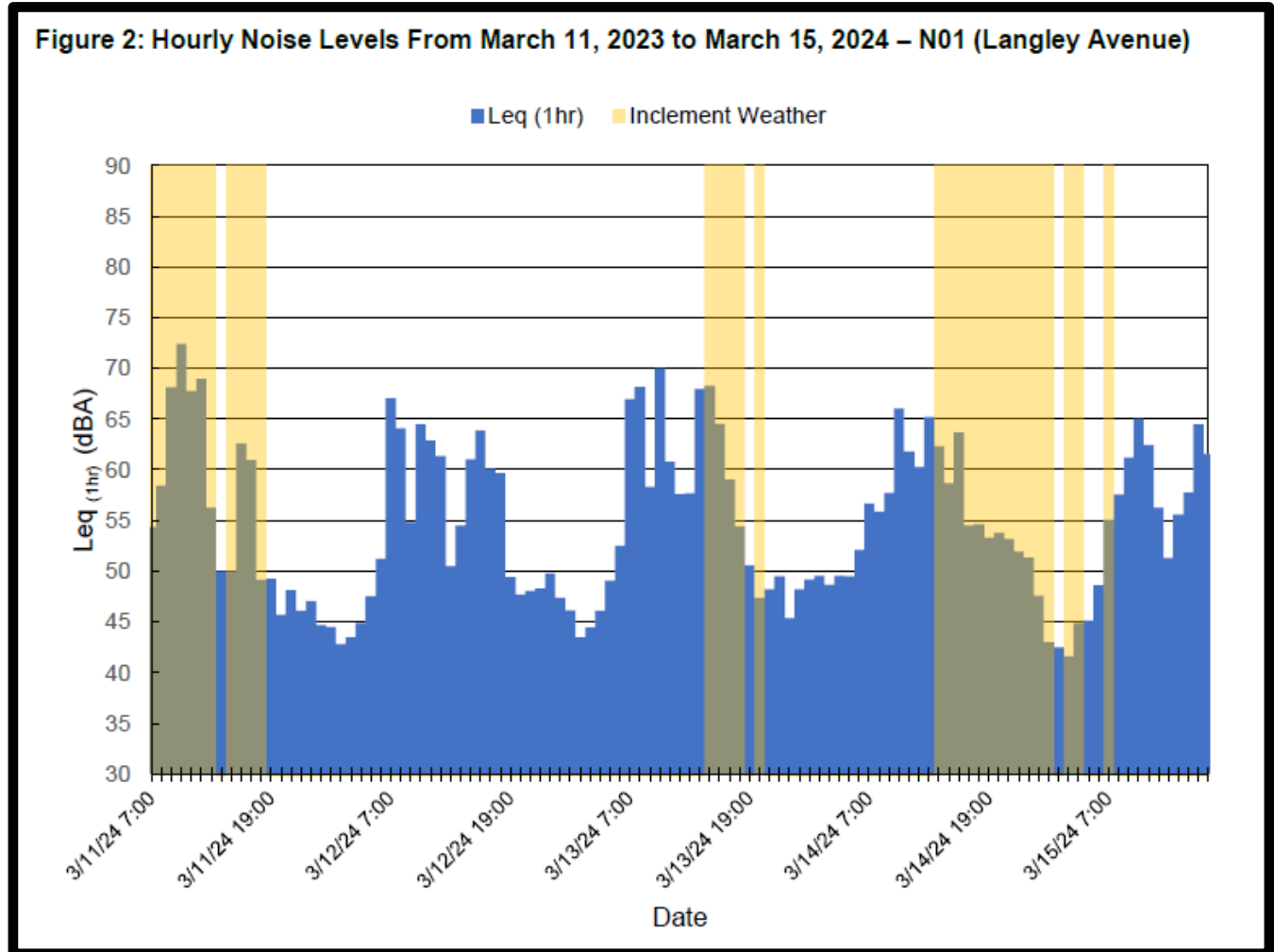
- Phase 2B will be an adjustment to Stage 2A to finalize the combined sewer installation, connect it, and continue watermain work. It will introduce an additional construction area within and north of the Pape and Riverdale intersection.
- Additional impacts in Stage 2B:
 - No vehicular traffic from Pape Avenue to Riverdale eastbound, or from Riverdale to Pape westbound
 - Eastbound traffic will divert north onto Pape, westbound traffic will divert north/south through laneway or turn around.
 - Pape Avenue converted to one-way northbound between Riverdale and Withrow
 - The northbound TTC stop on Pape north of Riverdale will be relocated slightly north to move it away from the construction zone.
 - The south crosswalk at Pape and Riverdale will reopen, and the north crosswalk will close.
- The work zone on Langley will alternate between the north and south side of the road. Pedestrian routes and traffic circulation will remain unchanged.



Long-term Noise Barrier

Regular Noise Data

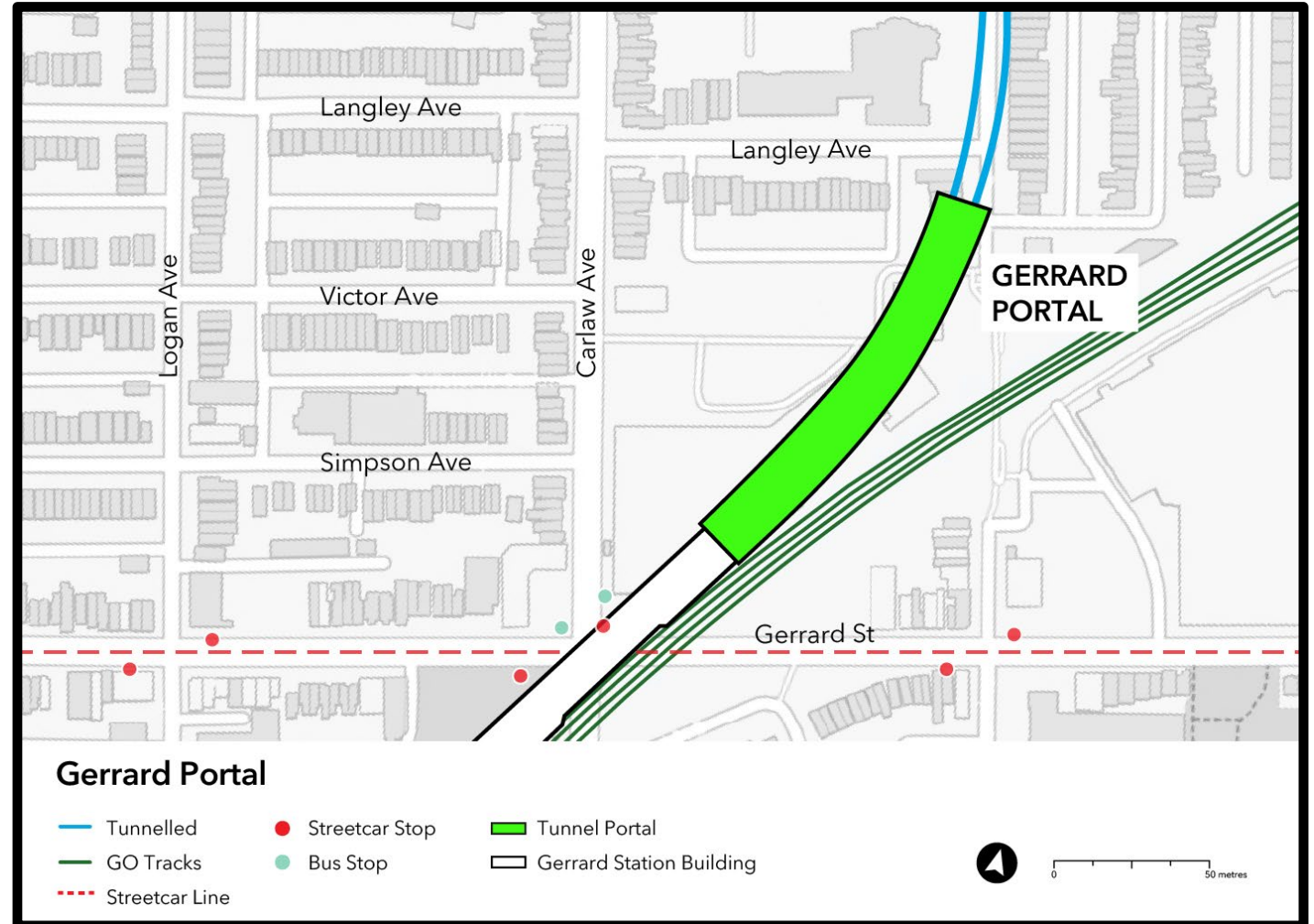
- CLC members have requested that noise reports be made available.
- Reports have been shared manually on a regular basis to the CLC members.
- Metrolinx will create a public repository for these reports to ensure public access to historical data.
- Reports include hourly noise levels per Health and Safety Plan targets (see image for example), as well as 10-minute measurements in the appendices.



Upcoming Activities and Issues Tracker

Upcoming Activities

- **May 28 Community Open House**
- CLC scope to be expanded to include work related to the construction of the Gerrard Tunnel Portal.
- This will include an extension of CLC invites to new stakeholders located within the portal's vicinity.
 - The portal will be constructed at the current 449 Carlaw plaza site.
 - Early work this year will involve the demolition of buildings within the plaza.
- Focus will remain strong on Pape Avenue JPS and safety in the Pape-Riverdale neighbourhood.



Issues Tracker - Past CLCs and Community Concerns

#	Action Item/Community Concern	Response/Resolution	Due Date
1	The trustee asked for examples of micro-tunnelling near a school or institution, ideally in Ontario, if not internationally.	Metrolinx is continuing to seek out examples of micro-tunneling near schools and institutions. Metrolinx will provide information on the micro-tunneling project at the May community open house	May 28, 2024
2	Site-visit with CLC members and Clearway to communicate safety measures and introduce community to raise any concerns. Should have proactive approaches to describe how we will work with community.	Metrolinx will coordinate a site visit with the appropriate parties following the completion of contractor onboarding, to ensure a productive site visit related to the work of Clearway. Update: Clearway will mobilize later this summer.	Summer 2024 (date to be confirmed)
3	Metrolinx will provide additional information on the noise wall's effectiveness. Cara requested a meeting to discuss this in more detail.	Metrolinx will provide additional information during the April 30, 2024, CLC.	April 30, 2024
4	CLC members have asked why Metrolinx did not accept the TDSB's suggestions,	Metrolinx to provide information during at the April 30, 2024, CLC	April 30, 2024
5	Concerns were raised about the Pape Ave. drop-off and pick-up area as parents are not able to park their vehicle close to the curb because of the limited space between the noise barrier fencing and curb.	Metrolinx has reviewed the fencing along the noise barrier to see if the placement can be changed. However, the footings of the noise wall prohibit moving the fence in. Metrolinx is checking with SBM to move the pylons off the steel plates.	April 30, 2024

Issues Tracker - Past CLCs and Community Concerns

#	Action Item/Community Concern	Response/Resolution	Due Date
6	Metrolinx will adjust the Issues Tracker as requested by the CLC members	Revisions to Issues Tracker made.	April 30, 2024
7	Metrolinx to discuss the drop-off/pick-up logistics with Carol Shea.	Metrolinx discussed concerns during the meeting with the TDSB on April 4, 2024.	Completed.
8	Metrolinx to address specific concerns regarding safety measures for children at PAJRPS.	Metrolinx has put in place two additional crossing guards between 7 a.m. to 4:30 p.m. (one at Riverdale/Pape, the other at Langley/Pape). PDO will be in place during south chamber work.	April 29, 2024



Discussion

