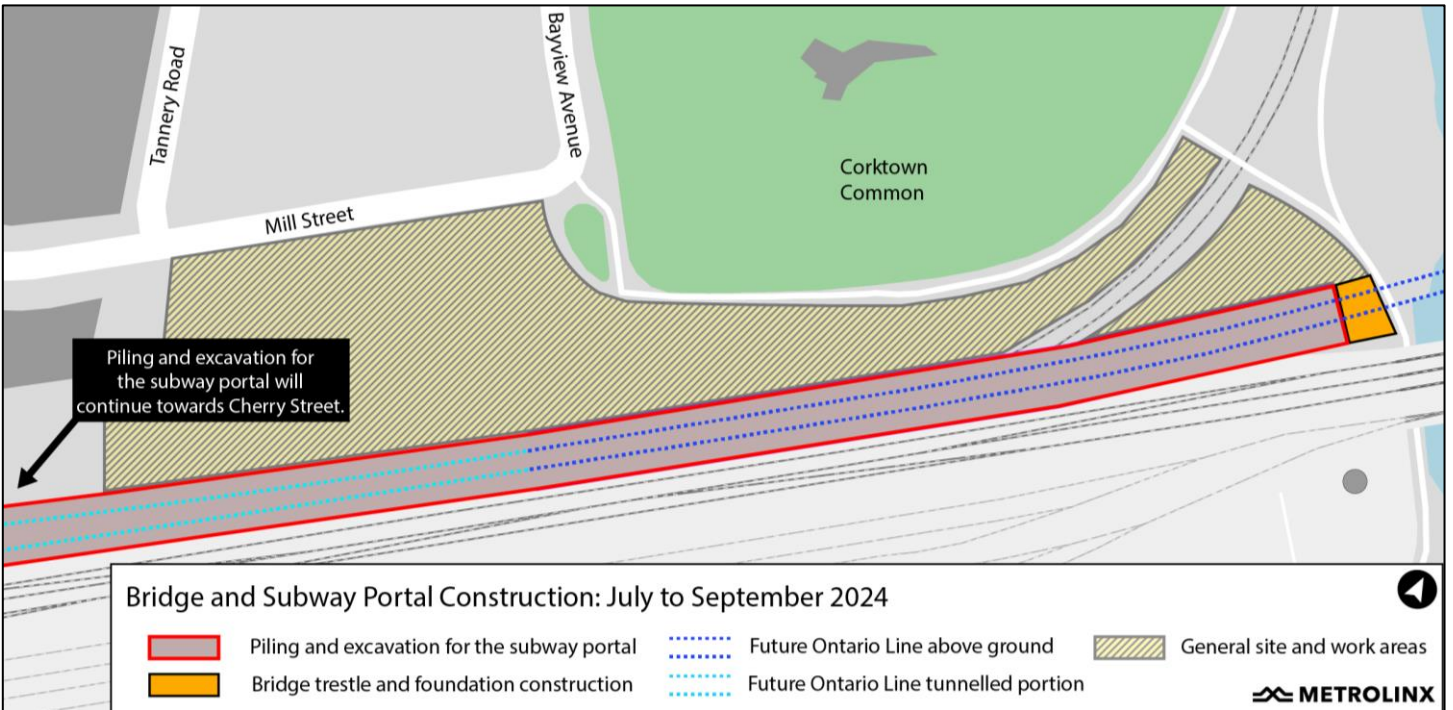


Bridge and Subway Portal Construction in the Don Yard

Construction update for July - September 2024

Daytime work hours: Monday to Saturday between 6 a.m. - 5 p.m.

Overnight work hours: Monday to Saturday between 8 p.m. - 5 a.m.



What is happening?

- In late July 2024, major civil work will begin to support the construction of a new bridge and subway portal in the Don Yard.
- Overnight work will be required to complete portal construction; mitigation measures will be implemented to reduce disruption. Please review the What to expect section for further details on noise mitigation.
- The below table provides information on the upcoming construction activities and work schedule:

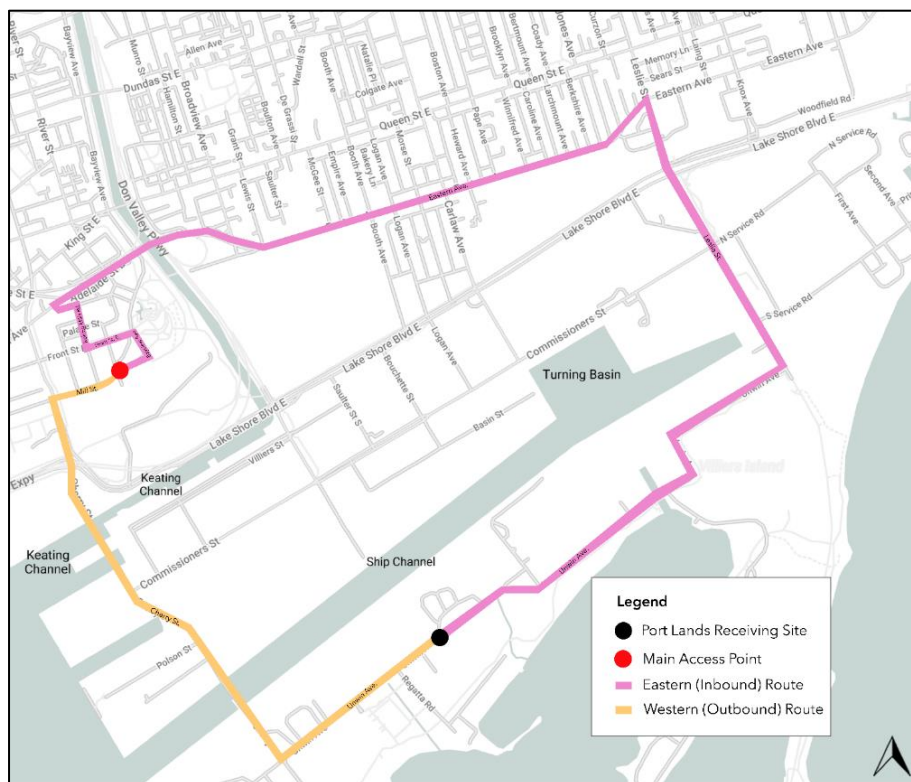
Dates and hours of work	Construction activity	Work details
<ul style="list-style-type: none"> • Starting Monday, August 5, 2024, for eight (8) months • Daytime and overnight 	Piling and excavation for the subway portal and cut-and-cover tunnel.	<ul style="list-style-type: none"> • Approximately four (4) drill rigs will be used during the day and night to complete piling work. • Excavators will load materials (spoils) into dump trucks to be hauled off site for disposal.
<ul style="list-style-type: none"> • Starting Monday, July 29, 2024, for approximately three (3) months • Daytime 	Bridge trestle construction	Building a temporary support structure in the Don River to support bridge construction.
<ul style="list-style-type: none"> • Ongoing for approximately two months • Daytime and periodic overnight concrete work 	Bridge foundation work (caisson drilling)	Use of drill rigs and concrete trucks to build the bridge foundation west of the Don River.
Expected work dates: <ul style="list-style-type: none"> • August 6 - 9, 2024 • August 12 - 30, 2024 • August 27 - 29, 2024 • September 23 - 25, 2024 Utility work will take place overnight	Utility relocations	<ul style="list-style-type: none"> • Occasional use of excavators, hydro-vacuum trucks, and compaction equipment. • Utilities must be relocated to make room for the new subway portal, tunnel, and bridge.

What to expect

- Equipment including excavators, compactors, hydro-vacuum trucks, dozers, tri-axel trucks, cranes, drilling rigs, loaders, and backhoes will be used to complete this work.
- Noise from the construction equipment mentioned above can be expected.
- Where possible, mitigation measures will be implemented to minimize construction disruption. Specific mitigations include:
 - Use of noise barriers and coverings
 - Installing noise reduction attachments on machinery - drill rigs will be equipped with cleaning mechanisms to minimize noise from auger shaking and trucks will have broadband back up alarms
 - Scheduling less disruptive work at night whenever possible
 - Monitoring noise and vibration levels to ensure acceptable levels are maintained
 - Positioning site lighting downward and away from residential properties
 - Placing materials down carefully to avoid banging noises
- Utility relocations must take place at night when trains are not running in the rail corridor to protect the safety of construction workers and minimize impact to GO train service.
- Construction equipment and materials will be properly secured within the work zone.
- Work may be delayed or rescheduled due to inclement weather and/or unforeseen circumstances.
- Construction of the new subway portal and tunnel will continue into 2028.

Traffic and pedestrian details

- Construction vehicles will use Bayview Avenue, Cherry Street, and Mill Street to facilitate equipment deliveries and haul away excavated material.
- Increased truck traffic can be expected within the vicinity of the work site; construction vehicles will use main roads to travel to and from the site (see haul routes shown on the map below).
- Changes to traffic and pedestrian routes may be required during some activities; notice will be provided in advance of any closures or detours.



About the Ontario Line

- 15.6-kilometre subway line that will make it faster and easier to travel within Toronto and beyond.
- 15 stops and more than 40 transit connections, including GO, TTC and more.
- Less than 30 minutes from one end of the line to the other.
- 28,000 fewer cars on the road each day.

Contact us:

Call us 24/7 at: [416-202-5100](tel:416-202-5100)
Write to us at: ontarioline@metrolinx.com
Find us on Twitter, Facebook, and Instagram: [@ontarioline](https://www.instagram.com/ontarioline)
Visit the website: www.metrolinx.com/ontarioline

Visit our community offices:

770 Queen Street East (near Queen & Broadview)
General hours:
Mondays, Tuesdays, and Fridays: 9:00 a.m. to 5:00 p.m.
Wednesdays and Thursdays: 10:00 a.m. to 6:00 p.m.

Thorncliffe Park:

East York Town Centre
45 Overlea Blvd., Toronto, ON M4H 1C3
Unit 153 (across from the Rogers store)
General hours:
Monday - Friday, 9 a.m. - 5 p.m.