

Ontario Line

Queen Spadina

Virtual Open House on Station Excavation

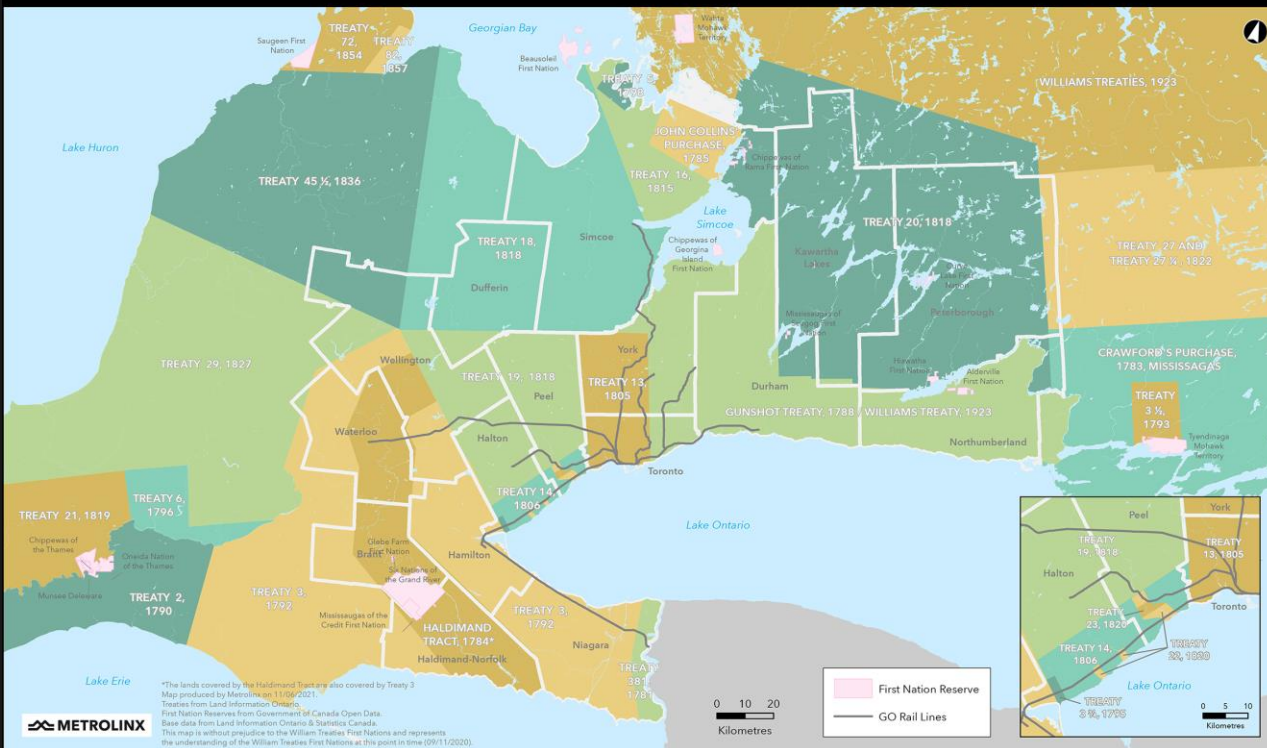
July 03, 2024

 METROLINX



LAND ACKNOWLEDGEMENT

Treaties and Reserves in the Greater Golden Horseshoe



Let us take a moment to acknowledge we are on lands that have been, and continue to be, home to many Indigenous Peoples including the Anishnabeg, the Haudenosaunee and the Huron-Wendat peoples.

We are all Treaty people. Many of us have come here as settlers, as immigrants or involuntarily as part of the trans-Atlantic slave trade, in this generation, or generations past.

We acknowledge the historic and continued impacts of colonization and the need to work towards meaningful reconciliation with the original caretakers of this land.

We acknowledge that Metrolinx operates on territories and lands covered by many treaties that affirm and value the rights of Indigenous communities, Nations and Peoples.

We understand the importance of working towards reconciliation with the original caretakers of this land. At Metrolinx, we will conduct business in a manner that is built on a foundation of trust, respect and collaboration.

Introductions

Speakers

Contracting Authority



Ross Anderson

Senior Advisor, Community Engagement
Metrolinx



James Francis

Senior Manager, Subways Sponsor
Metrolinx

Constructor



Sergio Gijon

Station Manager, Queen Spadina
Ontario Transit Group



Aga Szczotka

Environmental Management
Ontario Transit Group

Agenda

Welcome Introduction

- Land Acknowledgment
- Introduction

Presentation

- Ontario Line overview
- Construction look-ahead
- Queen Spadina Station Excavation
- Reducing impacts

Q/A and Discussion

- Contact Us

Meeting Guidelines

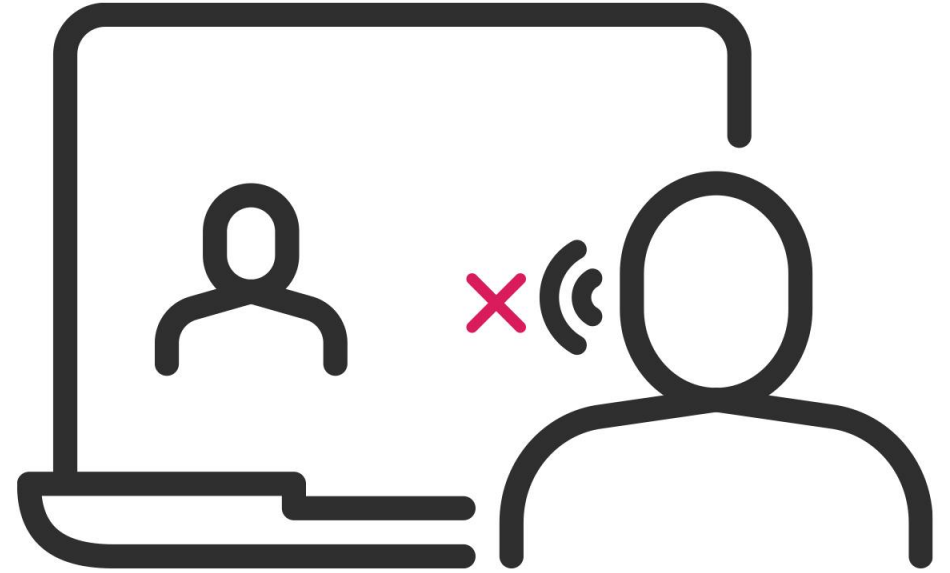
- Please help us create a **respectful space** for both panelists and fellow participants.
- We want to answer as many questions as possible, so **please keep your question brief.**
- Please ask **one question at a time**; if you have a second question, we will loop back to you.
- We'll have **dedicated time for questions**, so please note them down and we'll have an opportunity for you to raise your questions after the presentation.
- Today's meeting will be focused primarily on construction impacts in the Queen Spadina area, including **Excavation**. As such, for other topics, we may connect with you by phone or email after the meeting or speak to those topics at the Queen Spadina CLC.

Having audio issues?

Please dial in by phone;

Tel: 437-703-4197

Code: 365299408#



How to join Slido to Ask Questions through text



Ask your questions through Slido and we'll be answering some of the questions that were submitted previously through Slido.

Two ways to submit your questions:

Join Slido now by visiting **slido.com** and entering **code #4287799**

OR

scan this QR code to join on your phone.

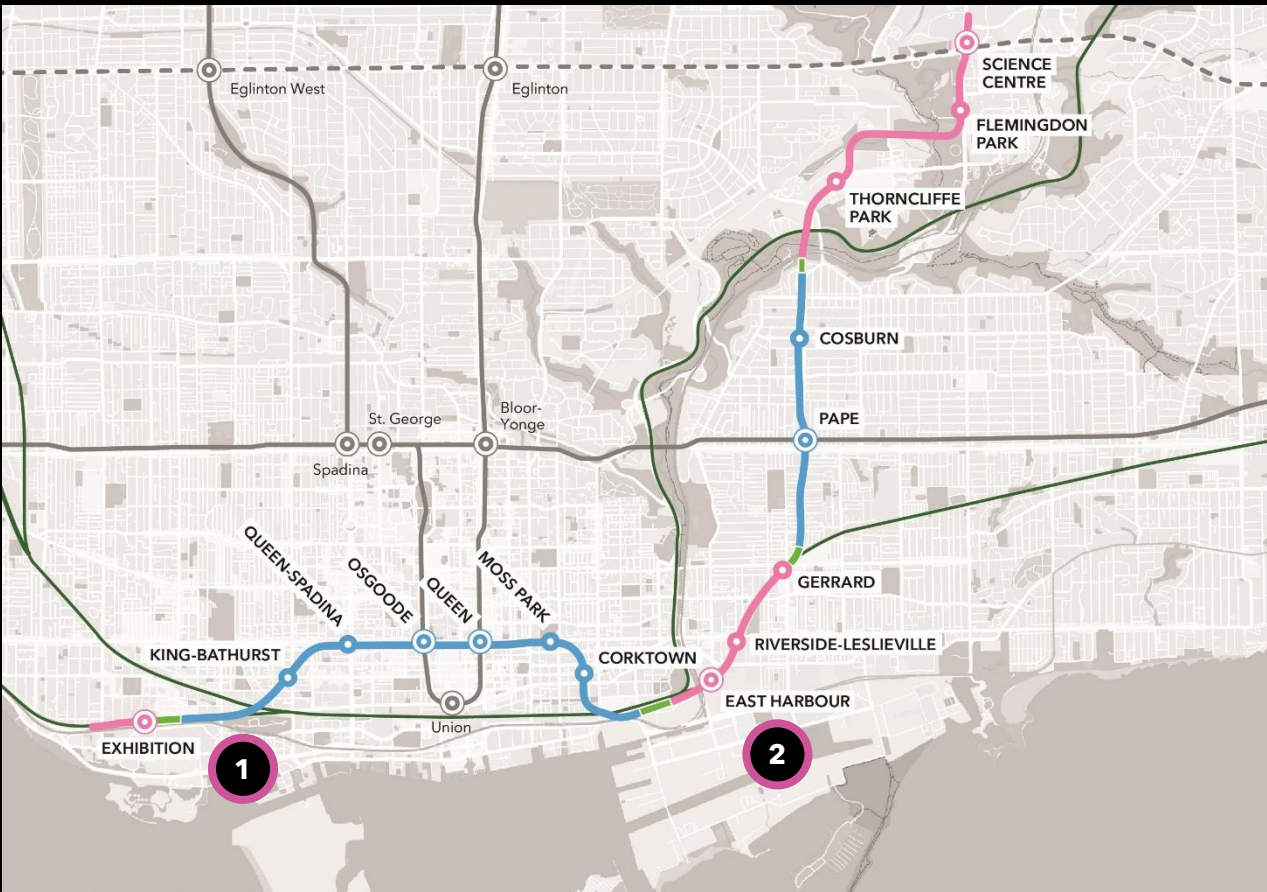


*Please note that it will take a moment for your question to become live on the system.

Ontario Line

About the Ontario Line

Ontario Line Subway



— At Grade / Elevated
 ● Station
 — Existing GO Rail
 - - - Future Line 5 Eglinton

● Interchange Station
 — Tunnel Portal
 — Existing Subway

1 **South Alignment of Ontario Line**
 (Exhibition to Corktown/
 Don Yard)

2 **North Alignment of Ontario Line**
 (East Harbour to Science Centre)



15.6 kilometres long



15 stations



As frequent as every 90 seconds during rush hour



227,500 more people within walking distance to transit



388,000 daily boardings



40+ connections to other transit options



Up to 47,000 more jobs accessible in 45 minutes or less, on average



28,000 fewer cars off the road each day

About Ontario Transit Group (OTG)

Ontario Transit Group (OTG) is a joint venture between **Ferrovial Construction** and **Vinci Construction Grands Projets** to design, build and deliver the **southern portion of Ontario Line Subway** - Southern Civil, Stations and Tunnel work. The contract was awarded in November 2022.

Stations:

- **One above-ground station** to be integrated with the existing GO Transit Exhibition Station.
- **Two underground stations** to be integrated with the existing TTC Osgoode and Queen subway stations.
- **Four new underground stations** (King/Bathurst, Queen/Spadina, Moss Park, Corktown).

Tunnel:

- **6-kilometre tunnel** and associated tunnelling works from Exhibition to Don Yard portal.



Ontario Line South Civil spans Exhibition to Don Yard portal (west of the Don River), shown in yellow.

Ontario Line

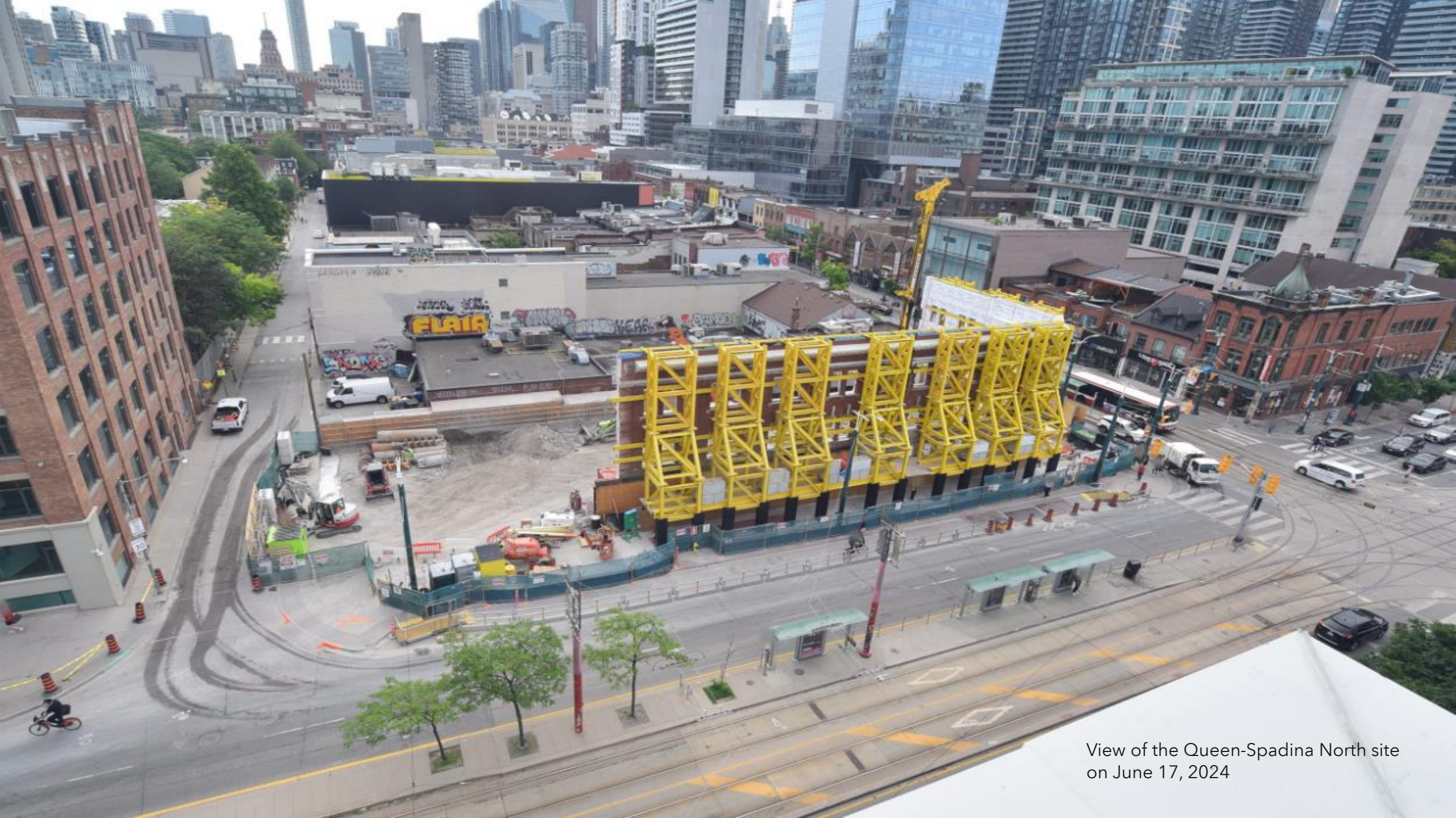
Queen Spadina Station Construction Look Ahead

2024 CONSTRUCTION LOOK-AHEAD

Queen-Spadina			
Time	Activity	Location	Details & Purpose
Spring / early Summer 2024	Piling	North and South station entrances	Piling to ensure structural support for the future station shafts, expected to be completed in Summer 2024
Spring 2024 / early Summer 2024	Hoarding Reconfiguration + Installation	North and South station entrances	Hoarding to ensure site safety, work is underway and expected to be completed in early Summer 2024
Summer 2024	Signage Installation - Phase 1	North and South station entrances	Installation of Phase 1 marketing signage expected to be completed in Summer 2024; Metrolinx and OTG are also exploring beautification opportunities for the sites (i.e. artwork)
Summer/Fall 2024 to Fall 2025	Excavation	North and South station entrances	Initiate excavation of shafts to the station level, to provide connection with future station platforms; excavation expected to be ongoing through Fall 2025.

Estimated station substantial completion date: 2030

*estimates only; dates subject to change based on unforeseen circumstances



View of the Queen-Spadina North site
on June 17, 2024

Ontario Line

Queen Spadina Station Excavation

What is station excavation?

- Station excavation involves creating a vertical or near vertical passageway from surface to depth where the subway tunnel and station will be constructed.
- With the use of specialized equipment, crews will remove soil and bedrock to a depth **40 metres** deep into the shaft.
- The newly drilled and poured secant pile walls help secure the perimeter of the excavation zone with the struts and walers installation.

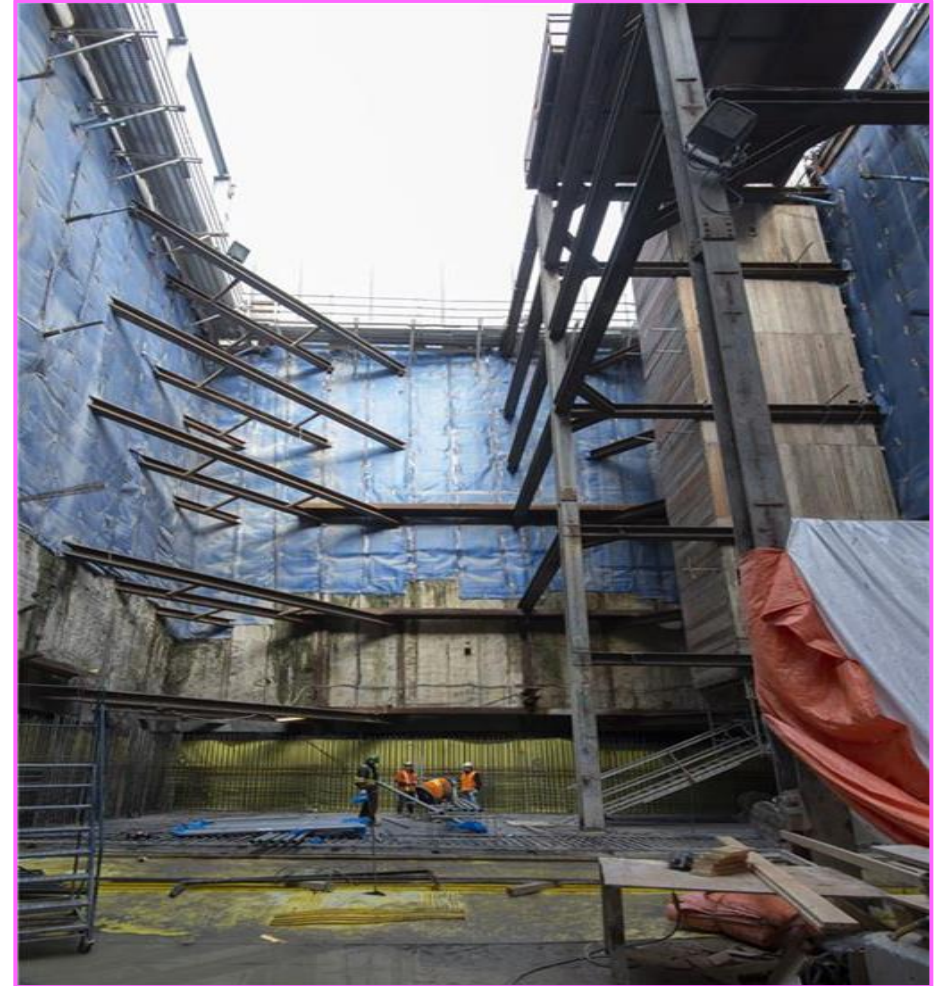


Image used is for illustrative purposes only

Excavation Schedule at Queen Spadina

- Excavation work is estimated to take place from Summer 2024 through Fall 2025.
- Expected hours of work by site:
 - South site: Weekdays, from 7:00 a.m. to 11:00 p.m. with occasional overnight and Saturday shifts
 - North site: Weekdays from 7:00 a.m. to 11:00 p.m., with occasional overnight and Saturday shifts.
- Work hours and timeframes are subject to change as the needs of construction change.



View of the future North Queen- Spadina entrance

*Dates are subject to change

What to expect in the community

- Material and equipment will be arriving to site, beginning in the upcoming weeks.
- Trucks entering and leaving worksites daily, following a specified route.
- Traffic control persons in place to ensure safety for the community and workers on-site.
- Excavation equipment will remain within the work site for the duration of the excavation process.



What to expect in the community

- Noise from equipment and machinery, loading of excavated material, is expected.
- Equipment used during this operation includes **cranes, excavators, dozers and dump trucks** on-site.

Loader



Excavator



Dump Truck

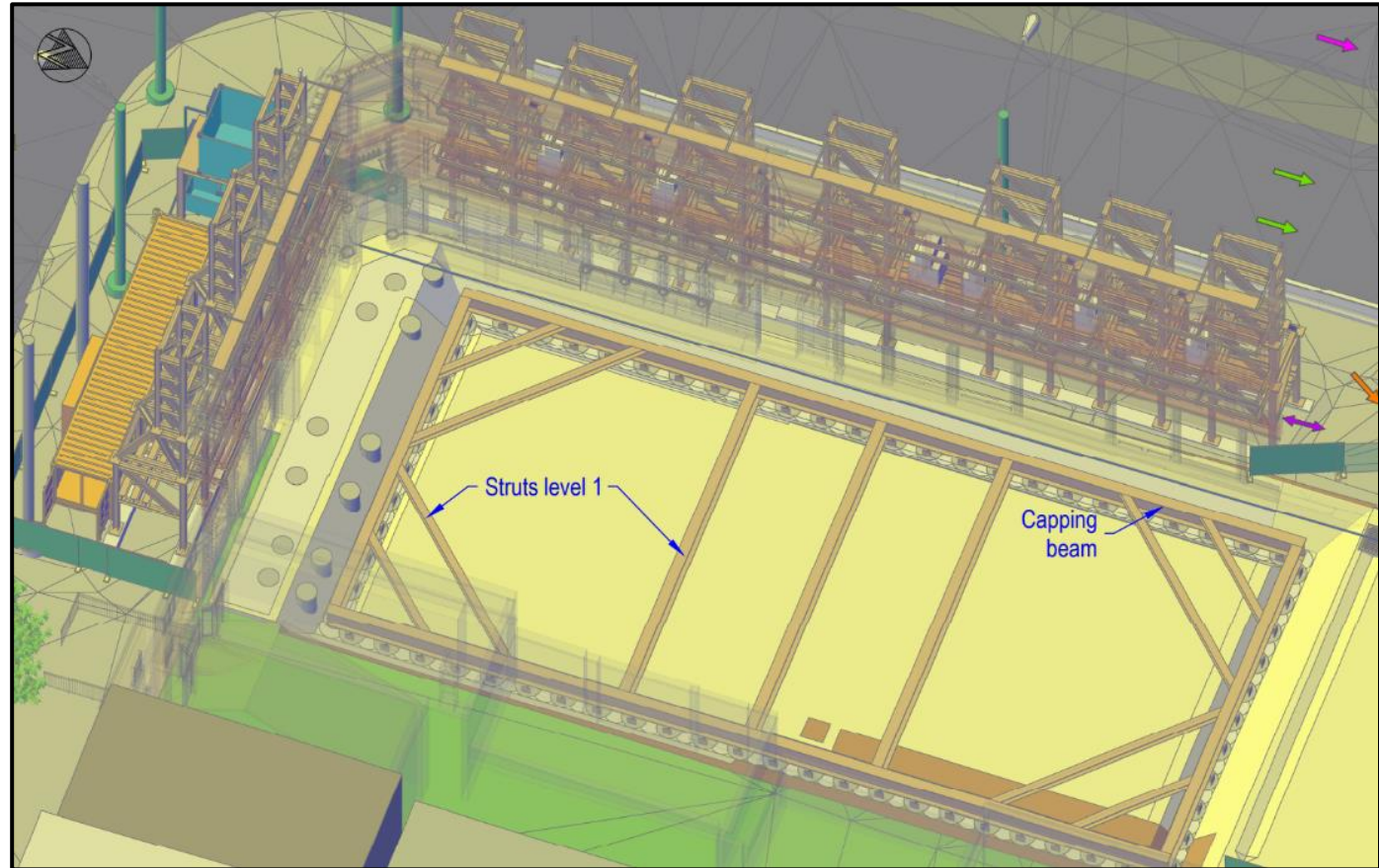


Crawler crane



Station excavation - how does it work?

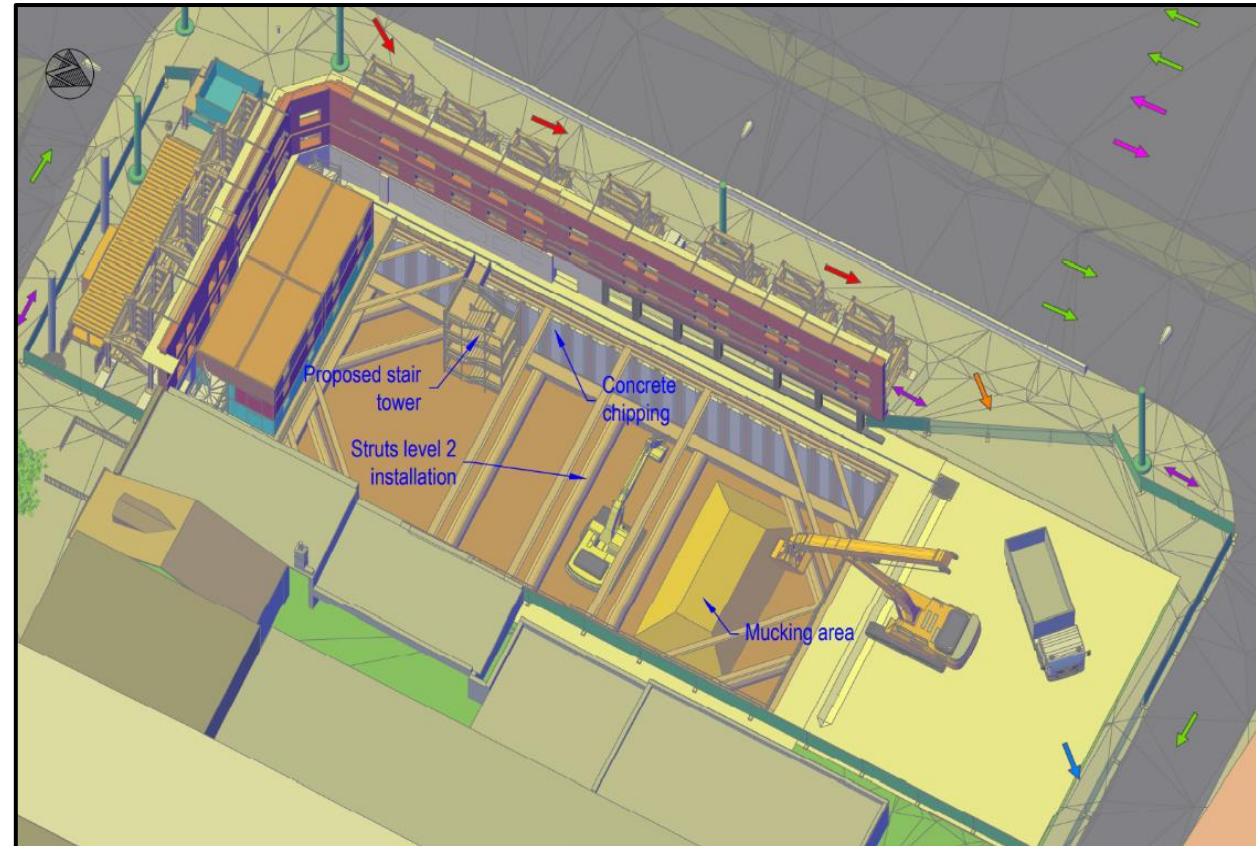
- Excavation requires crews to remove the surface layers of earth using excavators, dozers or other suitable equipment.
- The team excavates sequentially in lifts, while continuously installing support systems to prevent soil collapses.



View of South site excavation model; Design subject to change.
For illustration purposes only.

Shaft excavation - how does it work?

- As excavation progresses and the secant pile walls revealed, supports are installed to support and reinforce the shaft secant pile walls.



View of North site excavation model; Design subject to change. For illustration purposes only.

Ontario Line

Reducing impacts to the community

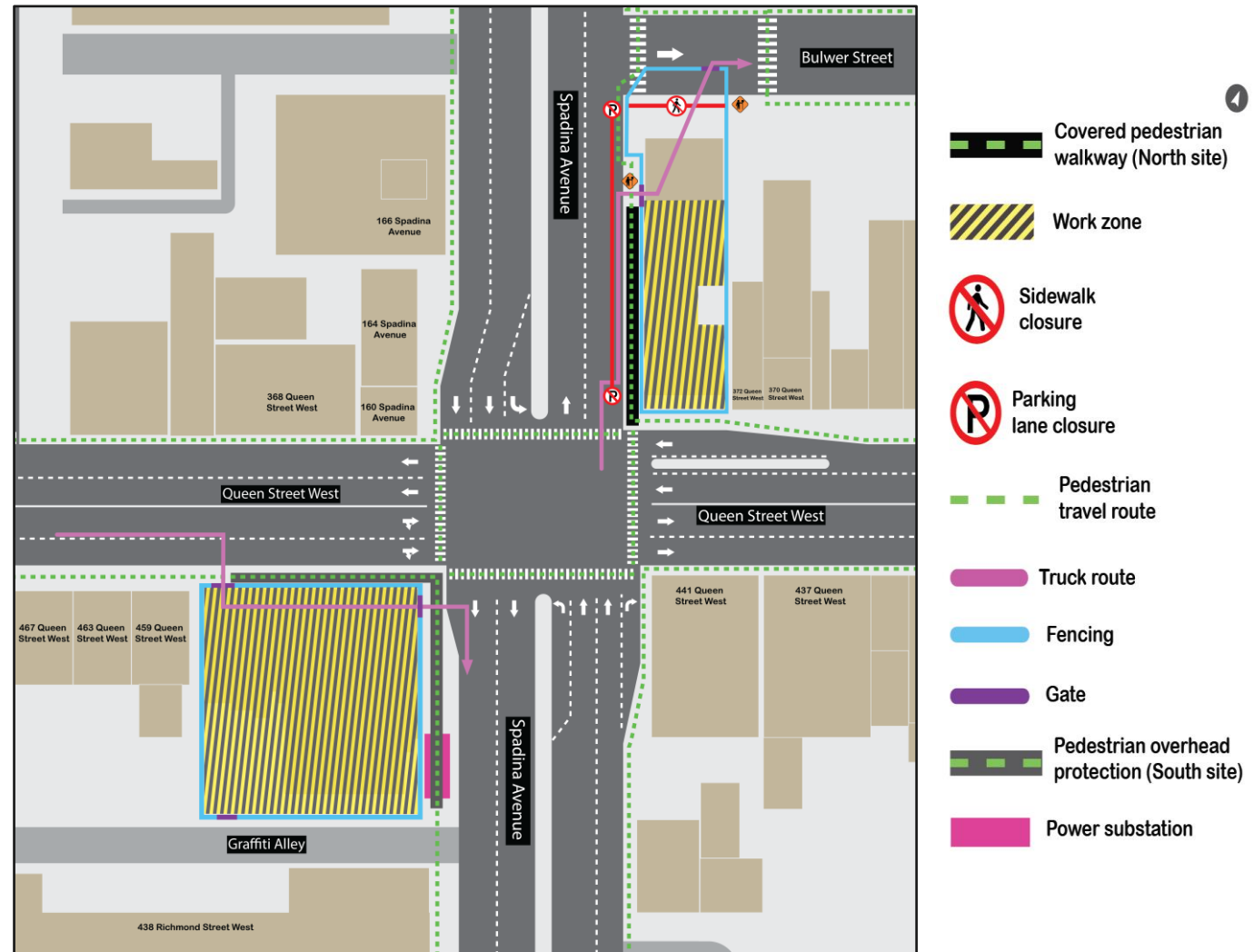
Access Points

North Site

- Trucks will enter via Queen Street and Spadina Avenue southbound and exit through the gate on Bulwer Street.
- The parking lane along the Spadina Avenue will remain closed.
- The sidewalk along the north end of the work zone (from Spadina Avenue on to Bulwer Street) will remain closed to ensure pedestrian safety access.

South Site

- Trucks will enter via Queen Street West, depending on the progress of work, they will have two options for exiting:
 - Through the gate at the northeast side of the work zone on Spadina Avenue heading south.
- The gate exit at the south end of the work zone onto Graffiti Alley will be used for smaller vehicles needed for maintenance or small deliveries to the site.



Construction Site Plans for Traffic and Pedestrians

- **All sidewalks and bike lanes will remain open.** Pedestrians will continue to use sidewalk along the work zone.
- **Parking lane on Spadina Avenue will continue to be closed** along the north work site.
- **All roads will remain open.** There are no planned road closures on Queen Street West, Spadina Avenue, Graffiti Alley or Bulwer Street. Increased traffic is expected due to the number of vehicles entering and leaving the site.
- **No impacts to public transit.** TTC access at the intersection of Queen Street West and Spadina Avenue will remain uninterrupted by the Ontario Line construction activities.
- A reminder for members of the public to **be mindful** and to follow the direction by flag-persons onsite when crossing the access points safely.



Minimizing Impacts to the Community

To reduce impacts to residents and businesses in the area, mitigations will be in place including:

- Air quality monitoring to track dust debris and vehicle emissions to ensure that construction activities don't impact the quality of the environment.
- Site hoarding where possible to help reduce noise.
- Continuous loop truck routes, reducing need for trucks to reverse using back-up alarms.
- Street sweepers and wheel cleaning as needed to ensure soil and sediment is kept off city streets and sidewalks.
- Expanded paving of frequently used areas, where possible, to minimize the amount of loose soil that can be disturbed by vehicle traffic.



Mud mat



Noise monitor

Vibration monitor

Reducing Noise Impacts

- **Monitoring noise levels:** Utilizing sound metres and real-time monitoring systems, OTG can track and control noise emissions to help minimize disturbances to the community and ensure project regulations compliance.
- **Noise and vibration monitoring devices** placed on-site and in neighbourhood for active tracking of impact to ambient noise levels.
- **Hoarding & noise barriers** serve as effective solutions to absorb and contain some construction noise.



Noise and vibration monitoring device.

Dust suppression can be effectively managed through the use of the following mitigations at site:

Mud Mats

Provide a stable and supportive surface for over soft or unstable ground preventing vehicles and heavy equipment from sinking and reducing the amount of mud created with more frequent passage.

Water Suppression

Assist by regularly moistening exposed soils and debris preventing dust particles from becoming airborne.

*Different solutions are utilized across the seven stations.



Ontario Line

Discussion

How to join Slido to Ask Questions through text



Ask your questions through Slido and we'll be answering some of the questions that were submitted previously through Slido.

Two ways to submit your questions:

Join Slido now by visiting **slido.com** and entering **code #4287799**

OR

scan this QR code to join on your phone.



*Please note that it will take a moment for your question to become live on the system.

Asking Questions Tonight

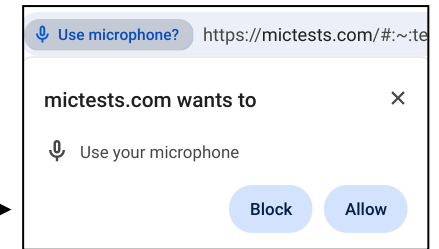
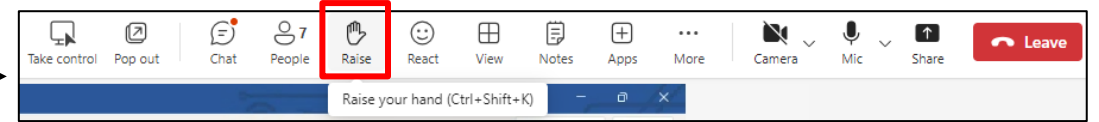
To ask a question, you can type into Slido (see link provided on slide #11) or raise your hand:

Desktop / Laptop / Chromebook:

- Raise your hand from the bar at the top of the screen.
- Your question will be placed in the queue.
- When it comes your turn, the meeting organizer will enable your mic.

***You still need to unmute yourself:** click the "mic" icon at the top of the screen.

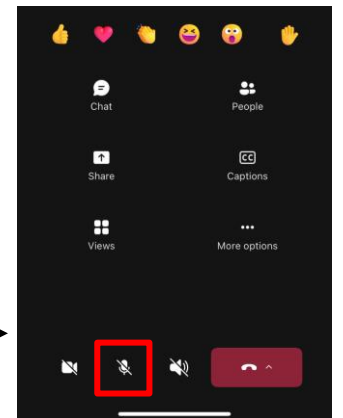
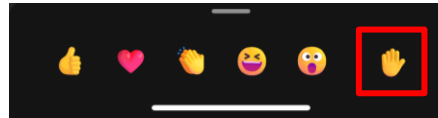
***Note:** your browser may ask your permission to use your mic. You must "allow" it.



Phone

- Click the hand icon from the bottom of the screen.
- Your question will be placed in the queue.
- When it comes your turn, the meeting organizer will enable your mic.

***You still need to unmute yourself:** swipe up & click the "mic" icon at the bottom of the screen.



Ontario Line

Question & Answer

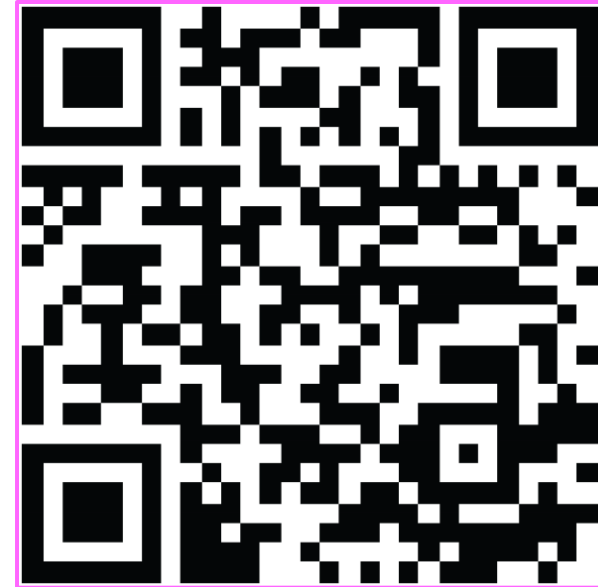
Contact Metrolinx and stay connected

Metrolinx will keep the community informed by providing Ontario Line updates and addressing questions and concerns effectively, and quickly.

Connect With Us:

-  Email: OntarioLine@metrolinx.com
-  Telephone 24/7: 416-202-5100
-  Ontario Line e-newsletter: [Metrolinx.com/OntarioLine](https://metrolinx.com/OntarioLine)

Follow us on social media:



Scan the QR code for Metrolinx
e-newsletter subscription

We are here for you

Metrolinx will keep the community, residents and businesses informed by providing project updates, seeking input and feedback, while addressing questions and concerns effectively and quickly.

Connect with us:

Bradley Naismith, Advisor, Community Engagement

Email OntarioLine@metrolinx.com

Telephone 24/7 @ 416-202-5100

Ontario Line e-newsletter @ Metrolinx.com/OntarioLine

Follow us on social media:

X / Facebook / Instagram @OntarioLine



Paste the QR Code of Metrolinx
e-newsletter subscription





Queen St W

Queen-Spadina

QUEEN-SPADINA

Canada Transit

Queen-Spadina

7 AM - 10 AM
3 PM - 7 PM
MON - FRI
ALL VEHICLES EXCEPTED

4511

DO NOT PASS
OPEN DOORS

Artist's rendering – subject to change. Transit-Oriented Community proposals not shown.



Queen/Spadina Station

- Tunnelled
- - - Streetcar Line
- Streetcar Stop
- ▲ Station Entrance
- Station Building
- Underground Station Area

Note: Heritage attributes will be conserved where possible.

