

Ontario Line

Moss Park Construction Liaison Committee

July 11, 2024



Agenda

Welcome (5 minutes)

- Introductions
- Land Acknowledgement
- Safety Moment

Presentation (25 minutes)

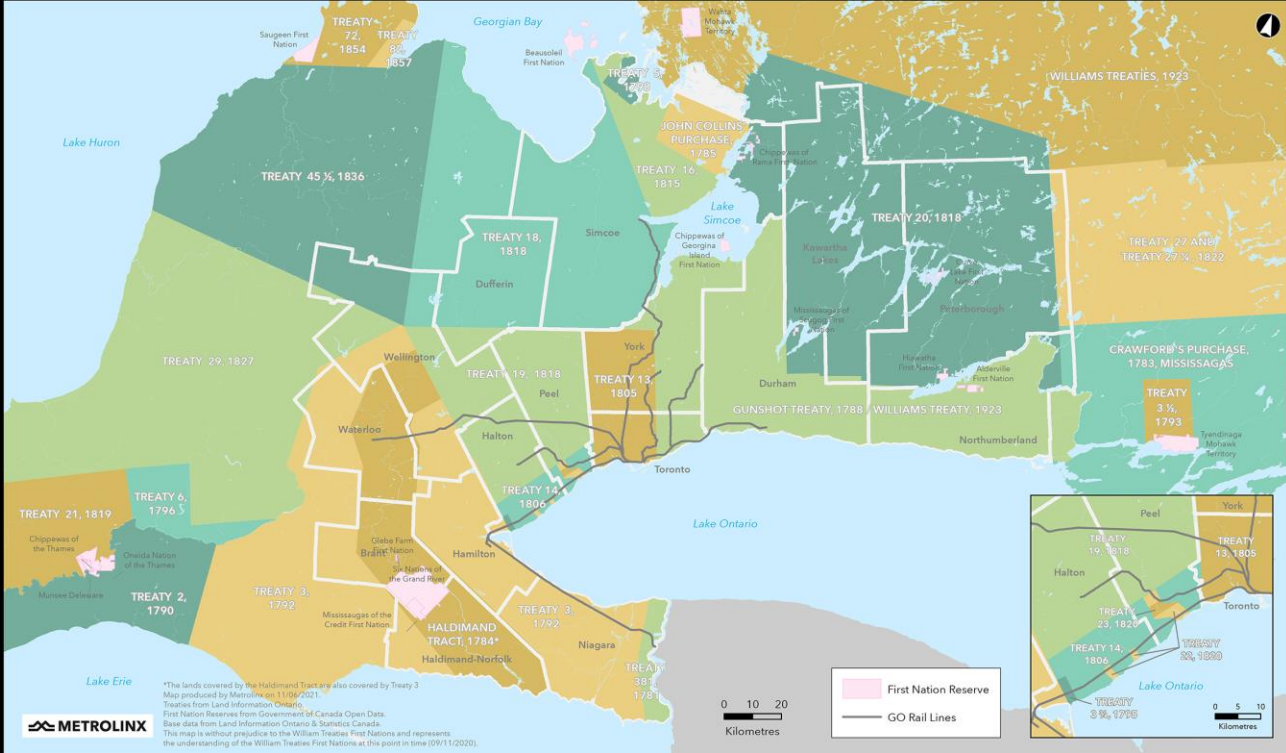
- Review of Action Items
- Moss Park Construction Updates
- Community Engagement
- We Are Here For You

Feedback and Discussion (30 minutes)



Land Acknowledgment

Treaties and Reserves in the Greater Golden Horseshoe



Let us take a moment to acknowledge we are on lands that have been, and continue to be, home to many Indigenous Peoples including the Anishnabeg, the Haudenosaunee and the Huron-Wendat peoples.

We are all Treaty people. Many of us have come here as settlers, as immigrants or involuntarily as part of the trans-Atlantic slave trade, in this generation, or generations past.

We acknowledge the historic and continued impacts of colonization and the need to work towards meaningful reconciliation with the original caretakers of this land.

We acknowledge that Metrolinx operates on territories and lands covered by many treaties that affirm and value the rights of Indigenous communities, Nations and Peoples.

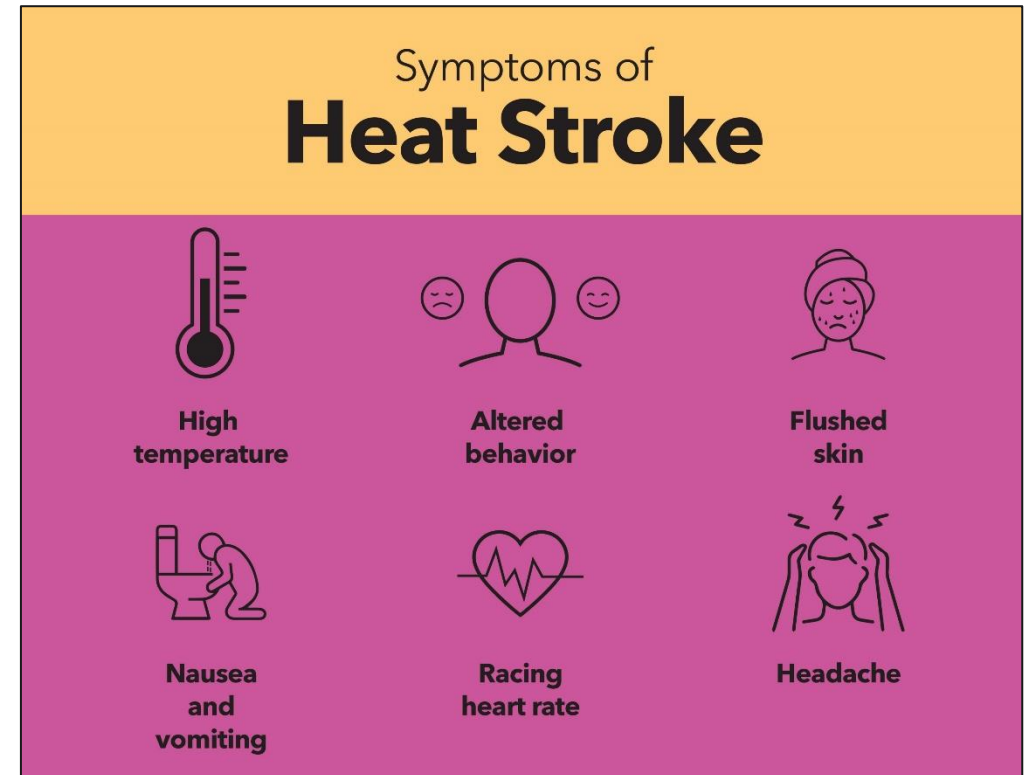
We understand the importance of working towards reconciliation with the original caretakers of this land. At Metrolinx, we will conduct business in a manner that is built on a foundation of trust, respect and collaboration.

Safety Moment

RISK OF HEAT STROKE

- High temperatures pose a risk of heat stroke, along with deteriorating air conditions.
- Older adults, infants, young children, pregnant people, and those with disabilities should take extra care to mitigate the risks and watch for signs of heat illness. These include swelling, rash, cramps, fainting, heat exhaustion, heat stroke and the worsening of some health conditions.
- If you believe you or someone you know has a high body temperature, has stopped sweating and/or becomes confused or unconscious, call **911**.
- While waiting for help, move the person to a cool place, apply a cool compress to large areas of their skin, and fan the person as much as possible.

By following these simple tips, we can all enjoy the sunshine safely. Let's make sun safety a priority this summer!



PREVIOUS CLC MINUTES AND ACTION ITEMS

ACTION ITEM	STATUS UPDATE
<p>Metrolinx to issue consultation survey for community feedback for the artwork</p>	<ul style="list-style-type: none">• In progress
<p>Metrolinx to send out a copy of the presentation and calendar invites for all future meetings.</p>	<ul style="list-style-type: none">• Ongoing

Construction Update

Moss Park station overview looking north



15,6 km de nouveau service de métro. 15 stations.

Future home of an Ontario Line

station for Moss Park. Futur emplacement d'une station

metrolinx.com/ligneontario
OntarioLine@metrolinx.com

METROLINX

Current Work

Current Work

Pile Drilling - Progress

- **Approximately 392 piles have been installed, which brings the work to 98% completion**
- Completion of piling anticipated mid-July.
- Achieved an average of 8 piles per working day.

Structural beams along the shaft perimeter



Current Work

Pile Drilling - Progress

- First drill rig demobilized from site on July 8th. Second drill rig expected to demobilize on/about July 19th, during the day.
- Traffic control persons will assist the maneuvering of the oversized flatbed vehicles exiting the site, ensuring public safety.
- All sidewalk and lane restrictions are temporary and intermittent and regular traffic (pedestrian, vehicle, cycling and TTC) is resumed after the oversized vehicle clears the exit gate.

Drill rig 1 demobilized and ready for relocation



Current Work

Preparation for Excavation

- Timber lagging is being installed to prepare for excavation, preventing soil from infiltrating the shaft and **ensuring worker safety and site stability**.
- Wooden planks are placed between vertical steel beams (king piles), driven into the ground, and spaced at intervals around the perimeter of the shaft to create this structure.

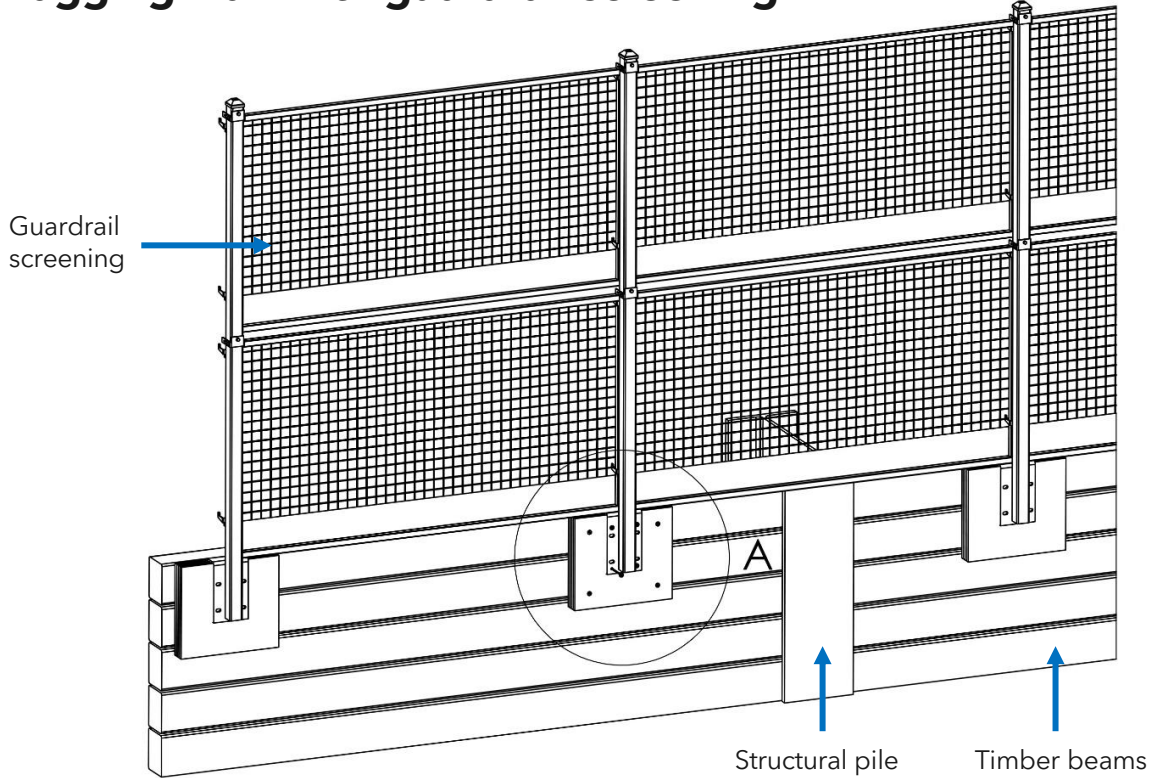


Timber lagging installation in the structural beams

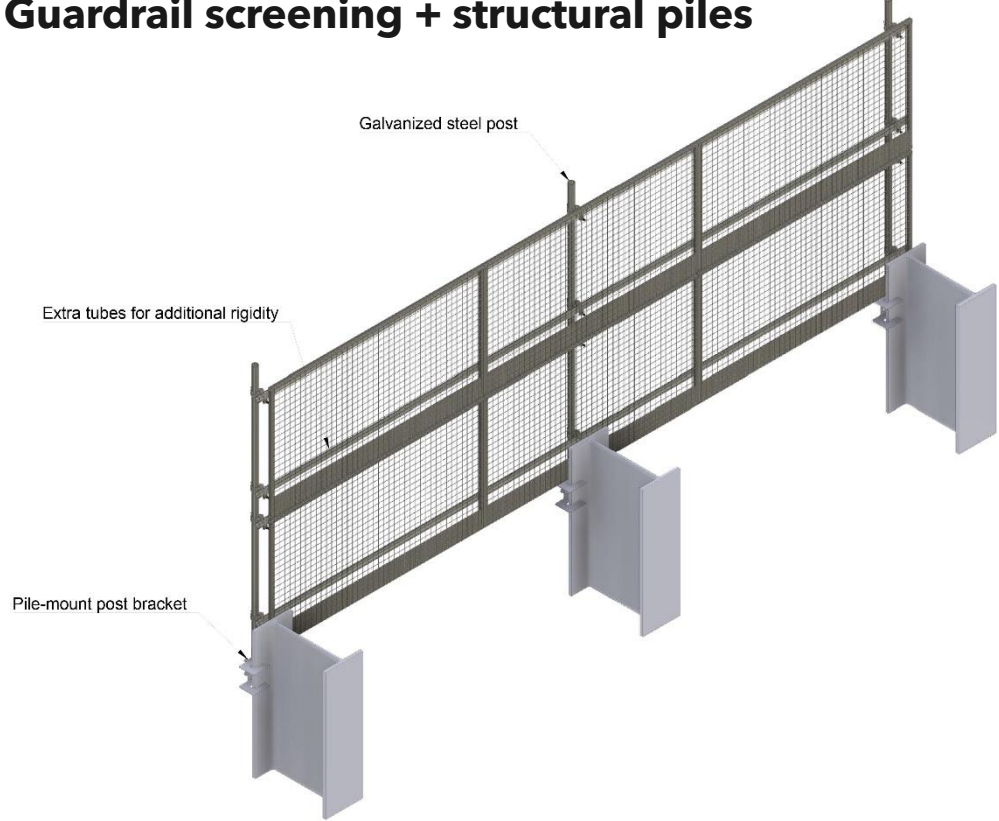
Current Work

Preparation for Excavation

Lagging wall with guardrail screening



Guardrail screening + structural piles



Current Work

Drainage Works

- Crews are digging trenches and laying down pipes throughout the site to install a water supply from the existing fire hydrant on Queen Street East, near the access gate.
- This connection point will supply water to the site. Primarily, this water will be used saturate the surface of the working platform to suppress dust in the hot/dry summer months.
- Work is completed in accordance with Toronto Fire Services to ensure there is no impact to use of the fire hydrant in the community, if required.

Protecting the fire hydrant connection



Current Work

Drainage Works



Pump and tank connection.



Water by-pass installation around the shaft.



Pipe installation parallel to shaft and hoarding.

Current Work

Drainage Works - Sewer Bypass System



Manhole installation for water management within the site.



Site servicing - power distribution through the site.



Site servicing - power distribution through the site.

Dismantling of the first drill rig



Upcoming Works

Upcoming Work

Summer / Fall 2024 Activities

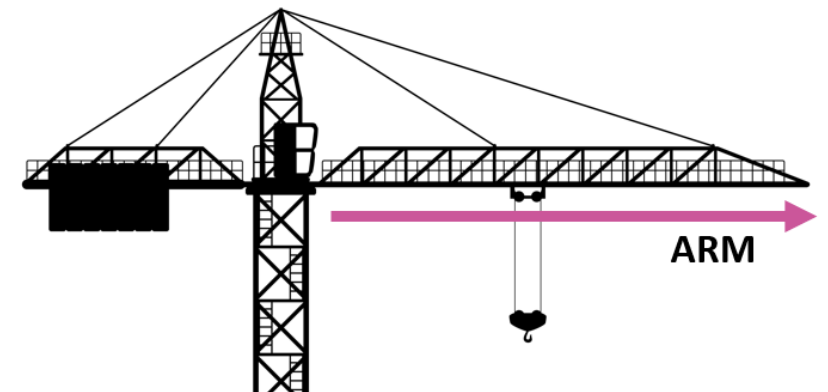
- Continuation of site servicing installation:
 - Electrical conduit installations
 - Water treatment tanks
- Excavation of the shaft (July 15th start date)
- Paving site access

Upcoming Work

Crane Installation

Crane installation onsite targeted for September 2024

- A tower crane has been selected as the preferred machine for this site.
- This specific crane will facilitate the movement of materials and equipment within our site, ensuring a safer and more efficient construction process, faster execution of the works.
- The tower crane will be operated in accordance with all applicable safety regulations and good practices.
- The tip of the arm of the crane will swing over some properties on Queen Street East - consent is being gathered from impacted properties.
- The positioning of the crane is to allow coverage of the entire station shaft - this will increase on site productivity and flow. The crane has been placed as far north as is possible while still covering the shaft.
- **Loads, equipment, and materials will never pass over any property.**
- The City and its transportation services will be involved in the permitting and approval of the crane, ensuring that the swing over the arena and the roadway are approved and safely within requirements.

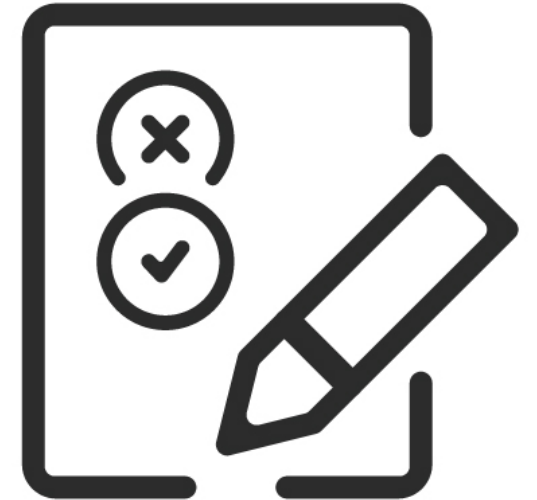


Community Artwork

Community Artwork

Update

- In fair practice across the south civils alignment of the seven (7) stations of the Ontario Line, community consultation for the artwork panels will be deployed this summer.
- Feedback will be collected through engagement with the Moss Park community via an online survey.
- Survey will be promoted online and via direct canvassing to the community to ensure maximum local participation.
- The community's voice will influence the selected artwork for identified site panels.
- Artwork will appear alongside Ontario Line signage for the project.



Discussion

Community Engagement

Community Engagement

Ongoing Community Canvassing and Participation

Project staff and representatives will commence ongoing interaction with the community, for the duration of the project. Activities will include:

- Pop-ups presences in the community (parks, events, markets)
- Pop-ups in condo lobbies
- Monthly CLC meetings: *Next meeting expected in-person, August 8th - more details to follow.*
- In-person and virtual consultation with residences and businesses
- Shop Local digital campaigns, supporting communities affected by Ontario Line Construction
- News, progress and information shared in the Ontario Line newsletter (currently over 6,600 subscribers)

We Are Here For You

Community Engagement Contact Information

Metrolinx will keep the community, residents and businesses informed by providing project updates, seeking input and feedback and addressing questions and concerns effectively and quickly.

Connect With Us:

- Zahrah Munas , Community Engagement Advisor Zahrah.Munas@metrolinx.com, 437-328-5354
- Mark Clancy, Senior Manager, Community Engagement Mark.Clancy@metrolinx.com, 647-449-2857

Telephone 24/7 @ 416-202-5100

Ontario Line e-newsletter @ Metrolinx.com/OntarioLine

Follow us on social media @ OntarioLine

