

Ontario Line

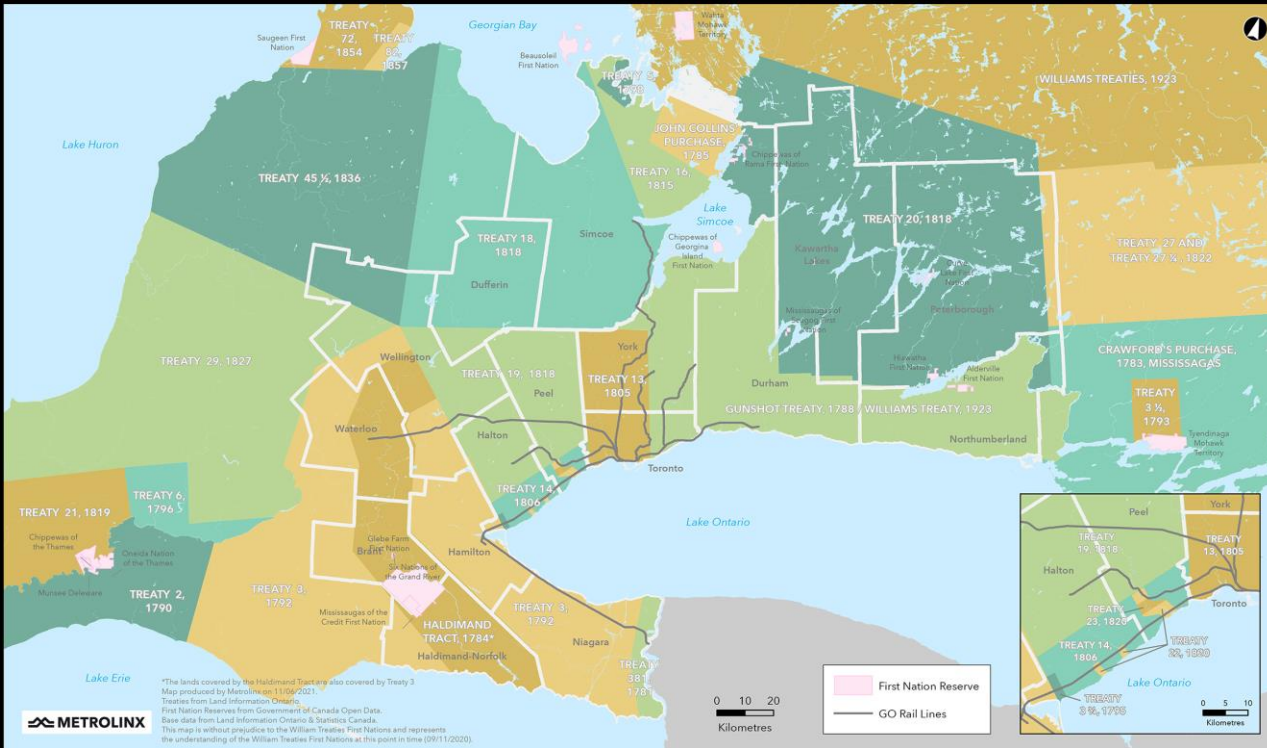
CLC Meeting #15

Pape Avenue Junior Public School

July 9, 2024

Land Acknowledgement

Treaties and Reserves in the Greater Golden Horseshoe



Let us take a moment to acknowledge we are on lands that have been, and continue to be, home to many Indigenous Peoples including the Anishnabeg, the Haudenosaunee and the Huron-Wendat peoples.

We are all Treaty people. Many of us have come here as settlers, as immigrants or involuntarily as part of the trans-Atlantic slave trade, in this generation, or generations past.

We acknowledge the historic and continued impacts of colonization and the need to work towards meaningful reconciliation with the original caretakers of this land.

We acknowledge that Metrolinx operates on territories and lands covered by many treaties that affirm and value the rights of Indigenous communities, Nations and Peoples.

We understand the importance of working towards reconciliation with the original caretakers of this land. At Metrolinx, we will conduct business in a manner that is built on a foundation of trust, respect and collaboration.

AGENDA

1. Welcome

2. Construction Updates – Toronto Hydro

- Trenching and duct bank installation
- Langley pick-up drop-off
- 449 Carlaw – Clearway mobilization

3. Construction Updates – Rogers

4. Construction Updates – Sewer Work

- First three phases
- Riverdale pick-up drop-off
- Replacement street parking

5. Long-Term Noise Barrier

- Lighting and mesh installation

6. Metrolinx-owned Properties Update

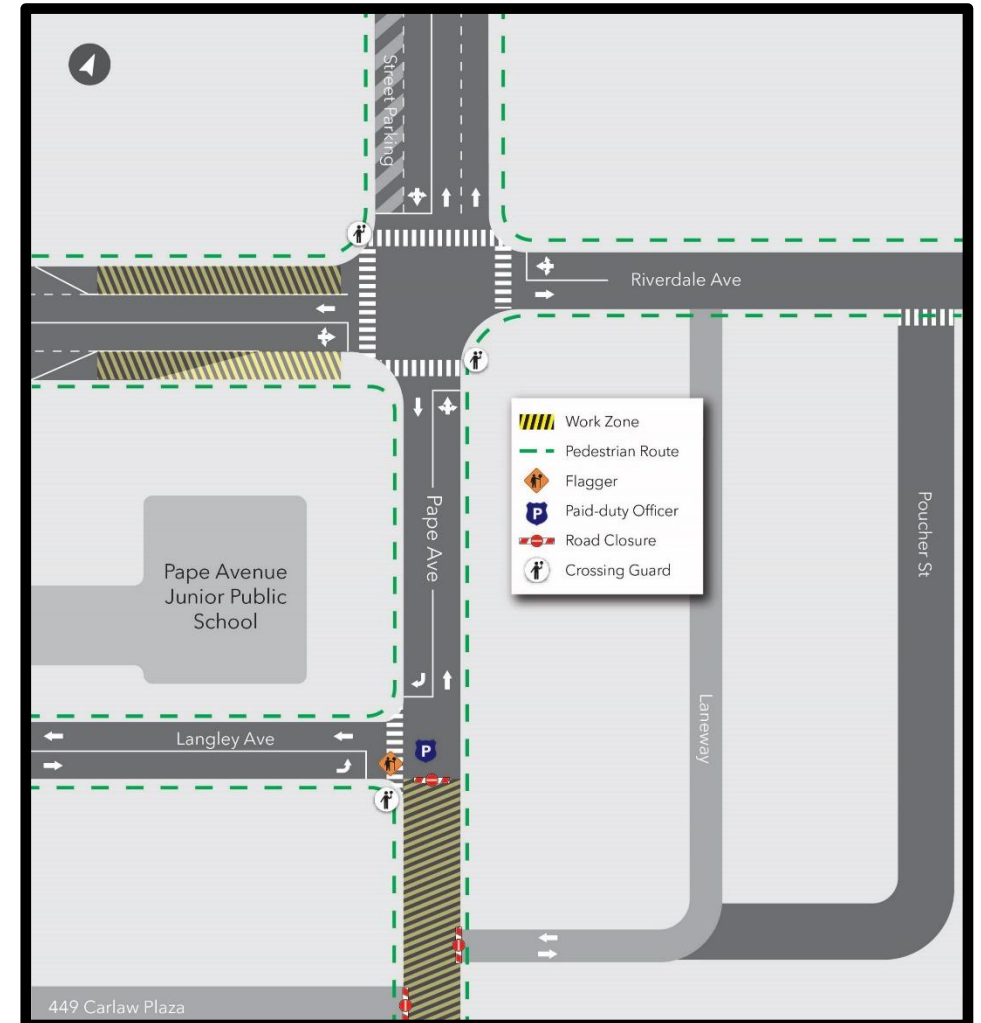
7. Upcoming Activities and Issues Tracker

8. Discussion

Construction Updates – Toronto Hydro

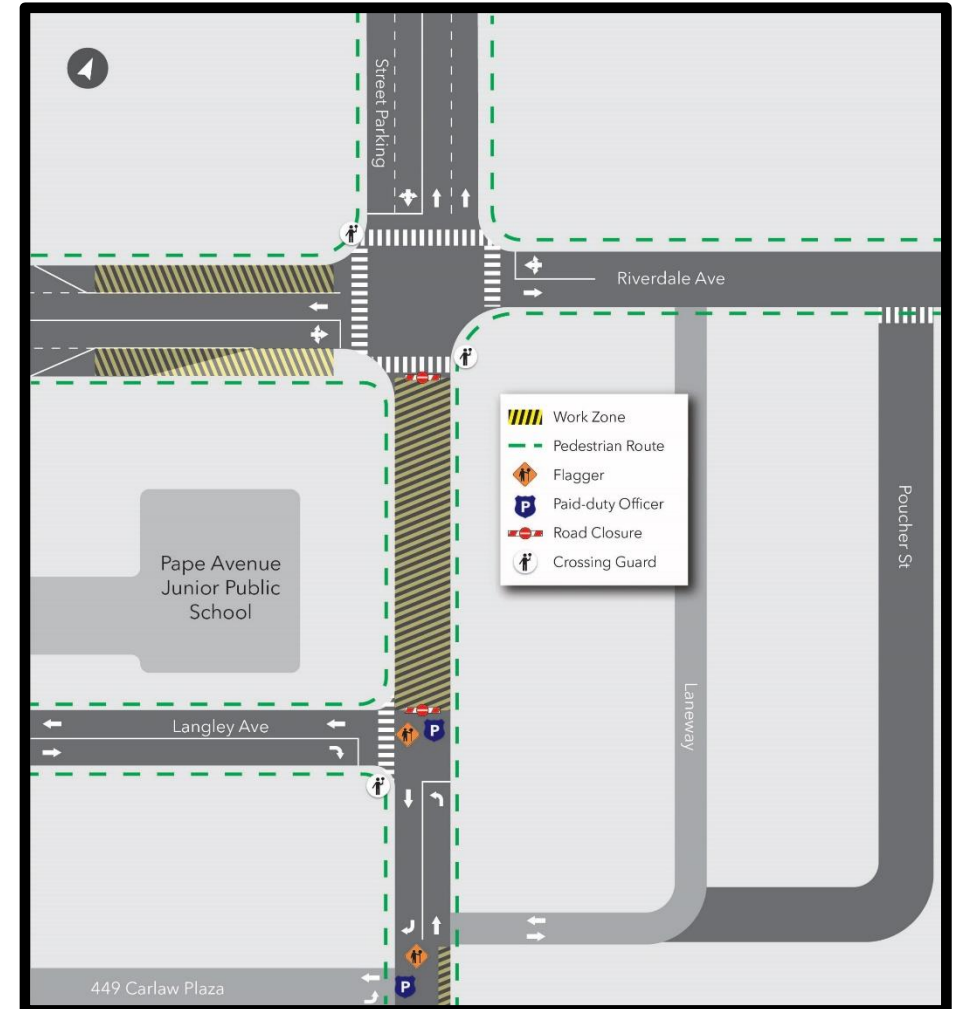
Toronto Hydro Duct Bank Installation – Stage 1

- On July 2, Toronto Hydro crews began mobilization for the first of two stages of trenching and duct bank installation on the east side of Pape Avenue.
- This stage involves trenching and duct bank installation on the south end of Pape Avenue, south of Langley.
- Key impacts from Stage 1:
 - Full closure of Pape Avenue south of Langley Avenue
 - No access to either the 449 Carlaw plaza or the laneway east of Pape and south of Langley from Pape Avenue.
 - Laydown areas located in the Riverdale Avenue curb lanes west of Pape Avenue.
- Pedestrian access will be maintained.
- Paid-duty officers and traffic control personnel will be in place to maintain safe traffic flow.
- This stage will take up to two weeks.



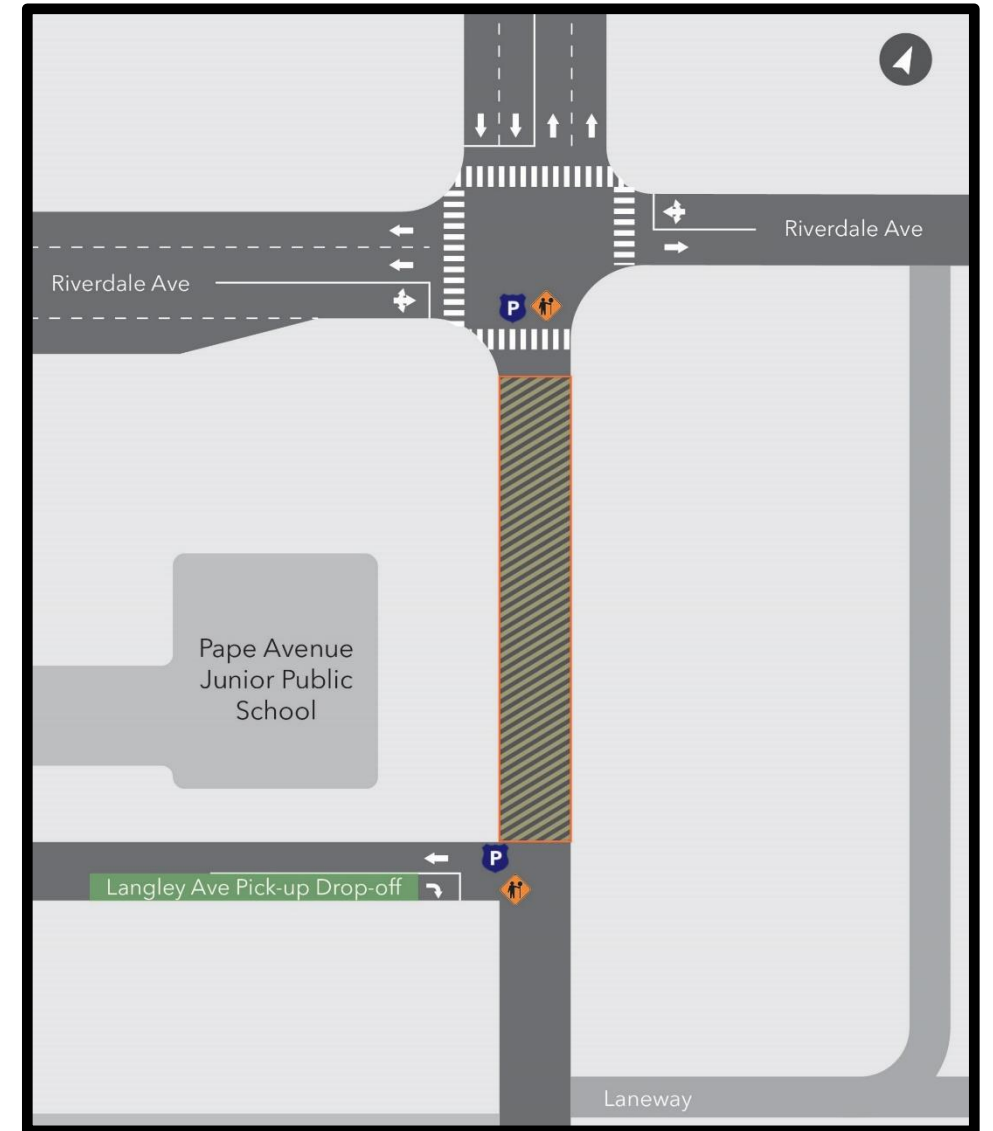
Toronto Hydro Duct Bank Installation – Stage 2

- Stage 2 will involve trenching and duct bank installation on Pape Avenue between Langley and Riverdale.
- Key impacts from Stage 2:
 - Full closure of Pape Avenue between Langley and Riverdale
 - Eastbound traffic on Langley must turn right upon reaching Pape; northbound traffic on Pape must turn left upon reaching Langley
 - Laydown areas located in the Riverdale Avenue curb lanes west of Pape Avenue
 - A small laydown area on the east side of Pape Avenue where the road terminates at the 449 Carlaw Avenue entrance.
- Pedestrian access will be maintained.
- Paid-duty officers and traffic control personnel will be in place to maintain safe traffic flow.
- Work will take approximately four weeks and is currently scheduled to start in as early as mid-July.
- A separate notice will be mailed out to the wider community outlining these impacts closer to the start date.



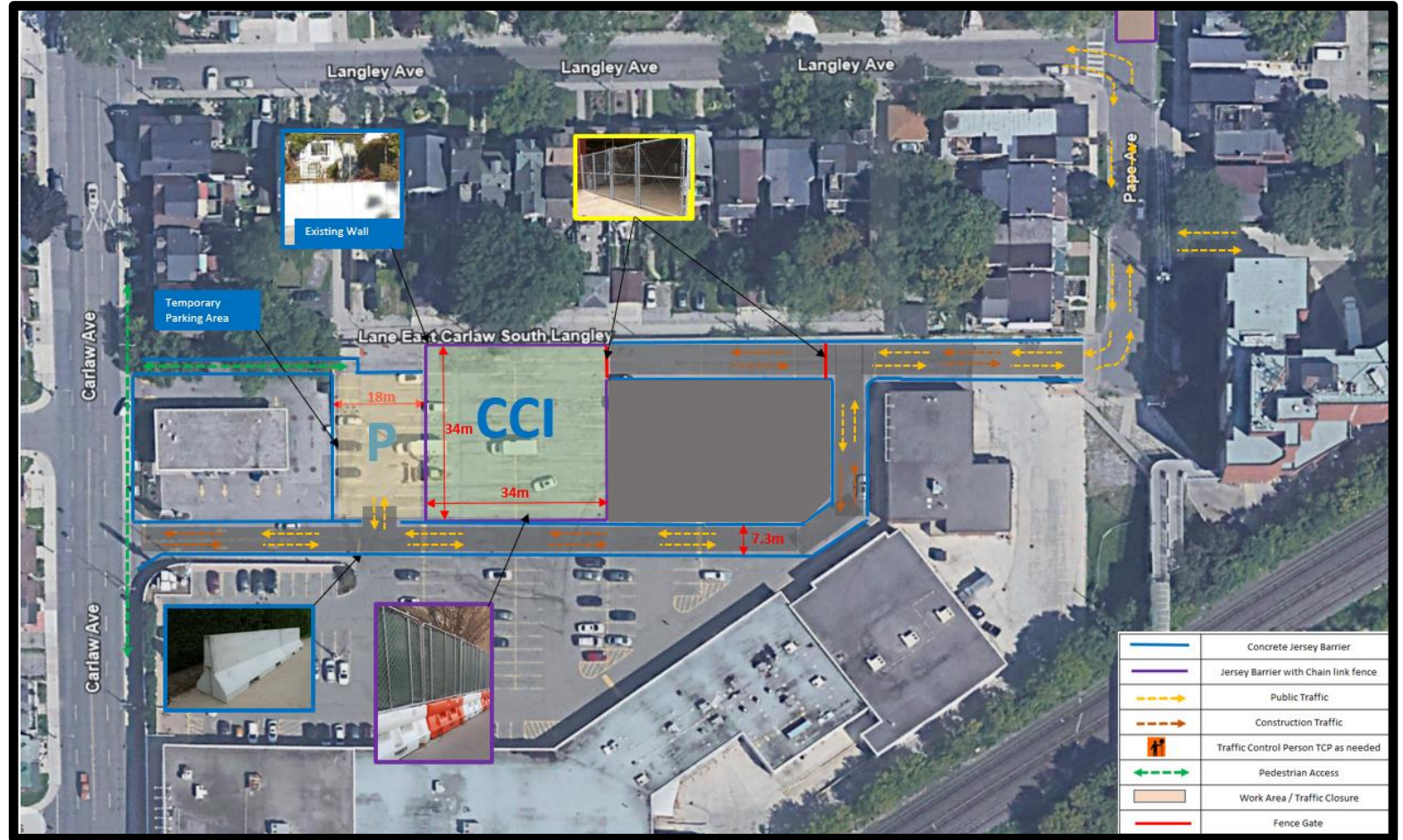
Langley Pick-up Drop-off

- With the shift to a full closure of Pape Avenue between Riverdale and Langley for Toronto Hydro's trenching work, the Pape Avenue pick-up drop-off (PUDO) will be unavailable.
- As an interim measure before the implementation of the long-term Riverdale solution, the PUDO will shift to Langley Avenue until Toronto Hydro's work concludes in early September.
- The Langley PUDO set-up will be similar to the solution used during Toronto Hydro's bypass installation on Pape in the spring of this year.
- Crossing guards, traffic control persons, and paid-duty officers will be on site to control traffic and assist where necessary.



449 Carlaw Plaza – Clearway Mobilization

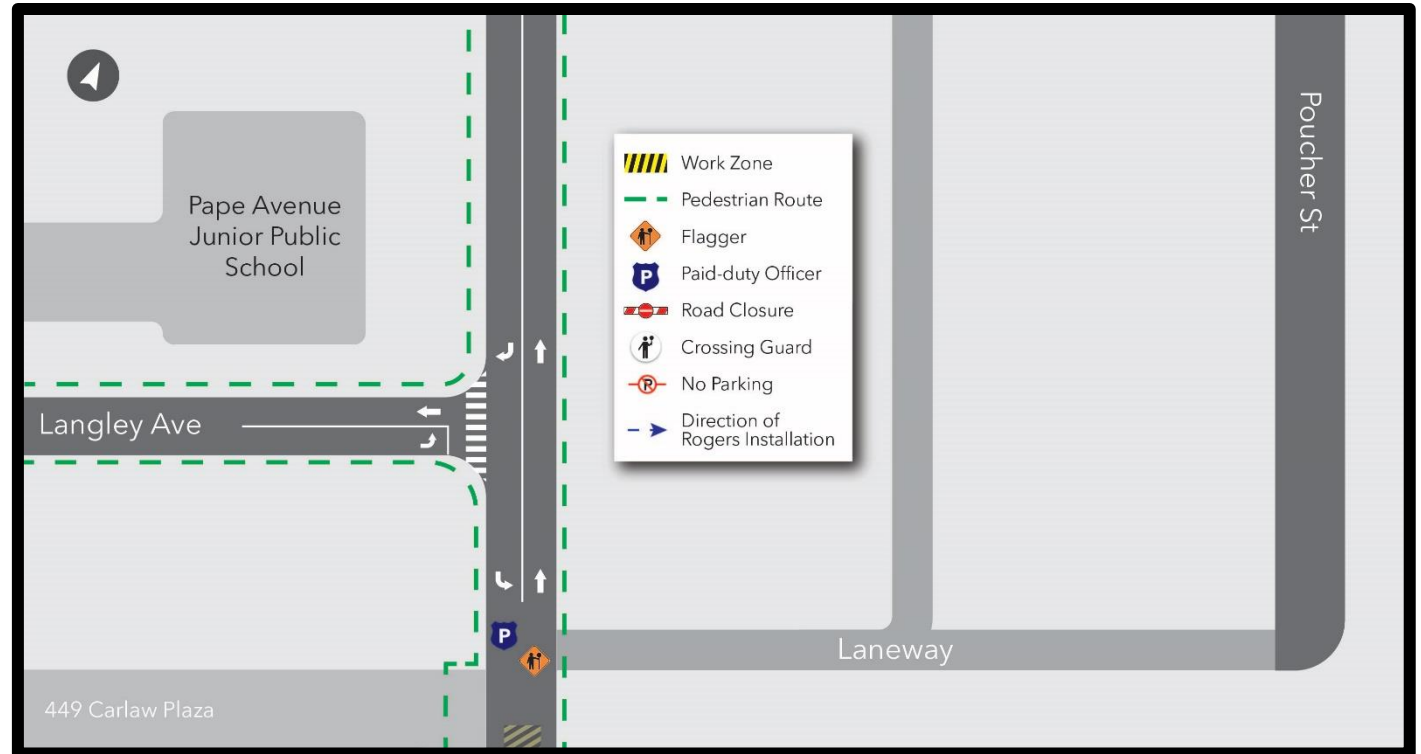
- This month during Toronto Hydro’s trenching work, Clearway is mobilizing within the 449 Carlaw Parking lot.
- Clearway will be using a separated section of the lot for material storage and worker parking. Physical separations will be put in place to reduce interface between public traffic Clearway operations. Clearway's laydown area is shown on the image as "CCI".
- Beside the laydown area, a small section of the lot has been set aside for members of the public to park their cars in the event that street parking is impacted by Metrolinx construction. Currently, only a small handful of street parking spots are anticipated to be impacted by Toronto Hydro's trenching work.
- Access to/from the lot will be separated by jersey barriers. Appropriate directional signage will be posted.
- Flagpersons will be on site during work hours to direct pedestrians and vehicles and ensure safety.



Construction Updates – Rogers Relocations

Rogers Relocations - Final Stage

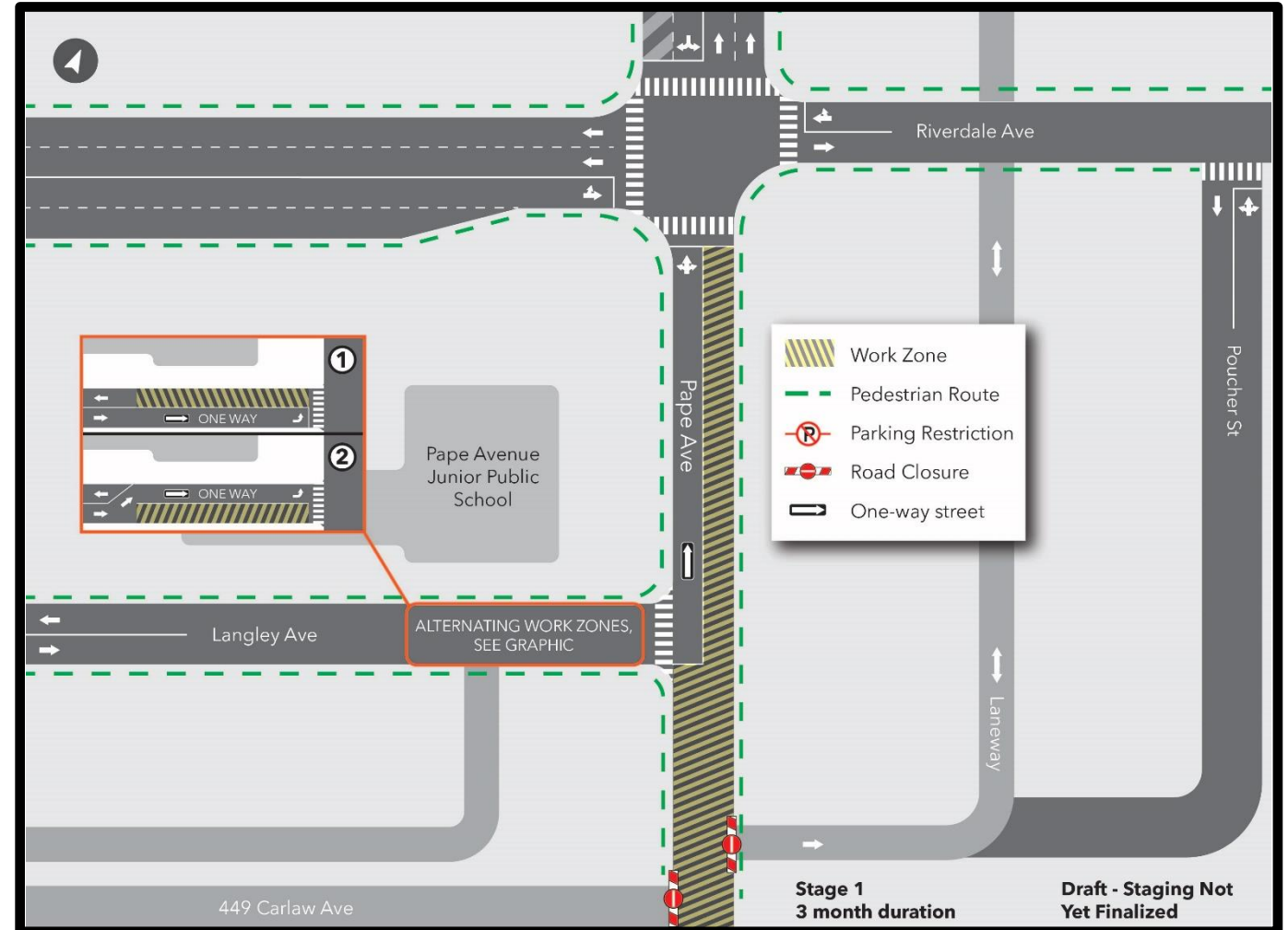
- Rogers' subcontractor, Cybertec, has completed the bulk of their telecom relocation work and has demobilized from site.
- The final stage is on hold until Toronto Hydro completes their duct bank relocation work on Pape Avenue. When that is complete, Rogers will return to complete the final stage (pictured right).



Construction Updates – Sewer Work

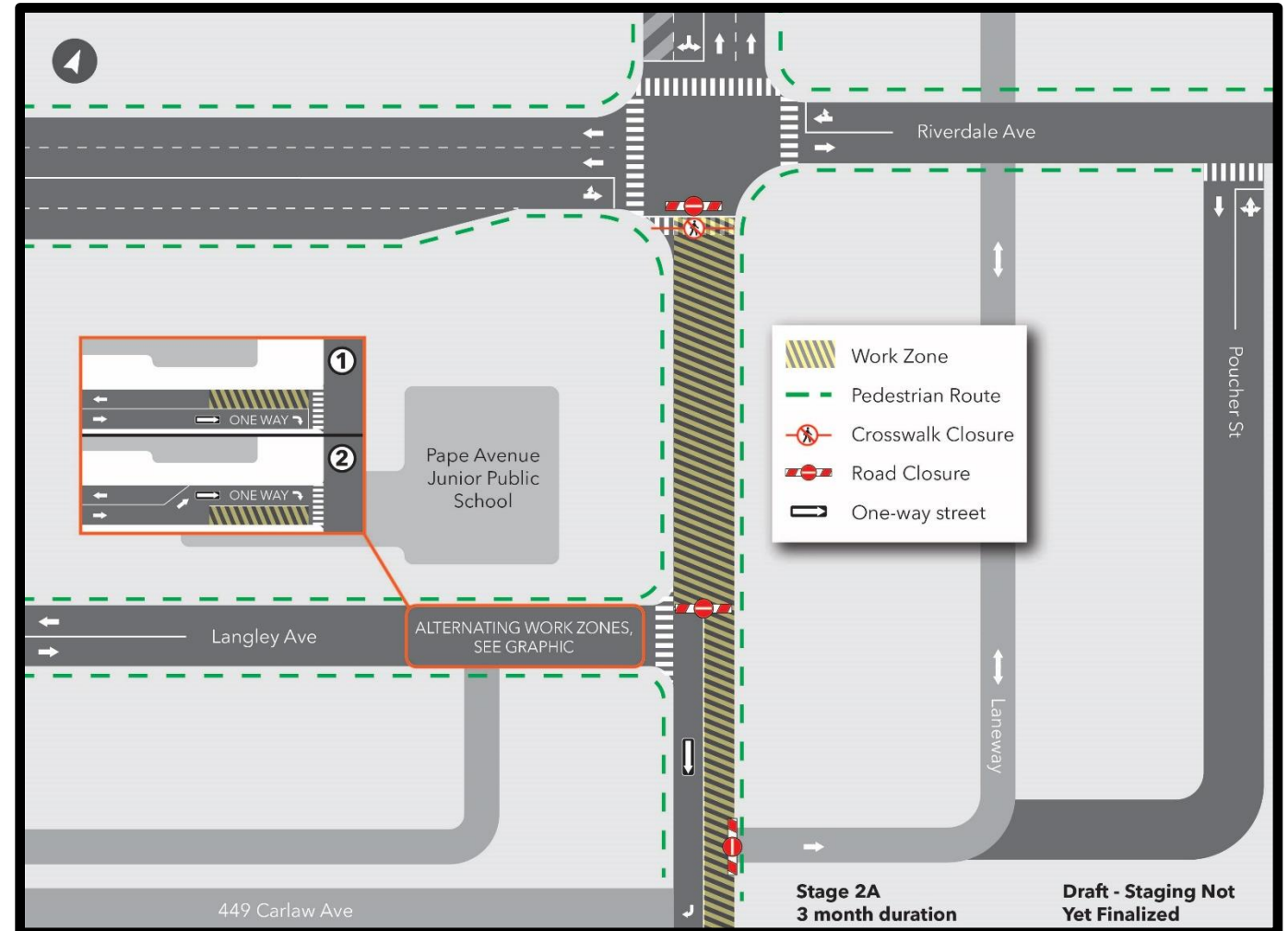
Sewer Relocation Work - Phase 1

- **Works will commence in September to install a new combined sewer and water main on Pape Avenue between Riverdale Avenue and the 449 Carlaw plaza and remove the old sewer infrastructure.**
- Phase 1 will be the first of three phases to install a combined sewer down the east side of Pape Avenue. In addition, the relocation of Telus telecommunication lines on Pape Avenue and on Langley Avenue will be wrapped into this phase.
- Key impacts from phase 1:
 - Full closure of Pape Avenue between Langley and 449 Carlaw
 - Pape reduced to one lane northbound between Langley and Riverdale
 - Langley Avenue reduced to one lane south of Pape Avenue JPS
 - East-north one-way traffic from east end of Langley Avenue north to Riverdale Avenue.
 - Street parking removal on Langley Avenue adjacent to the work zone.
- The work zone on Langley will alternate between the north and south side of the road. Pedestrian routes and traffic circulation will remain unchanged.



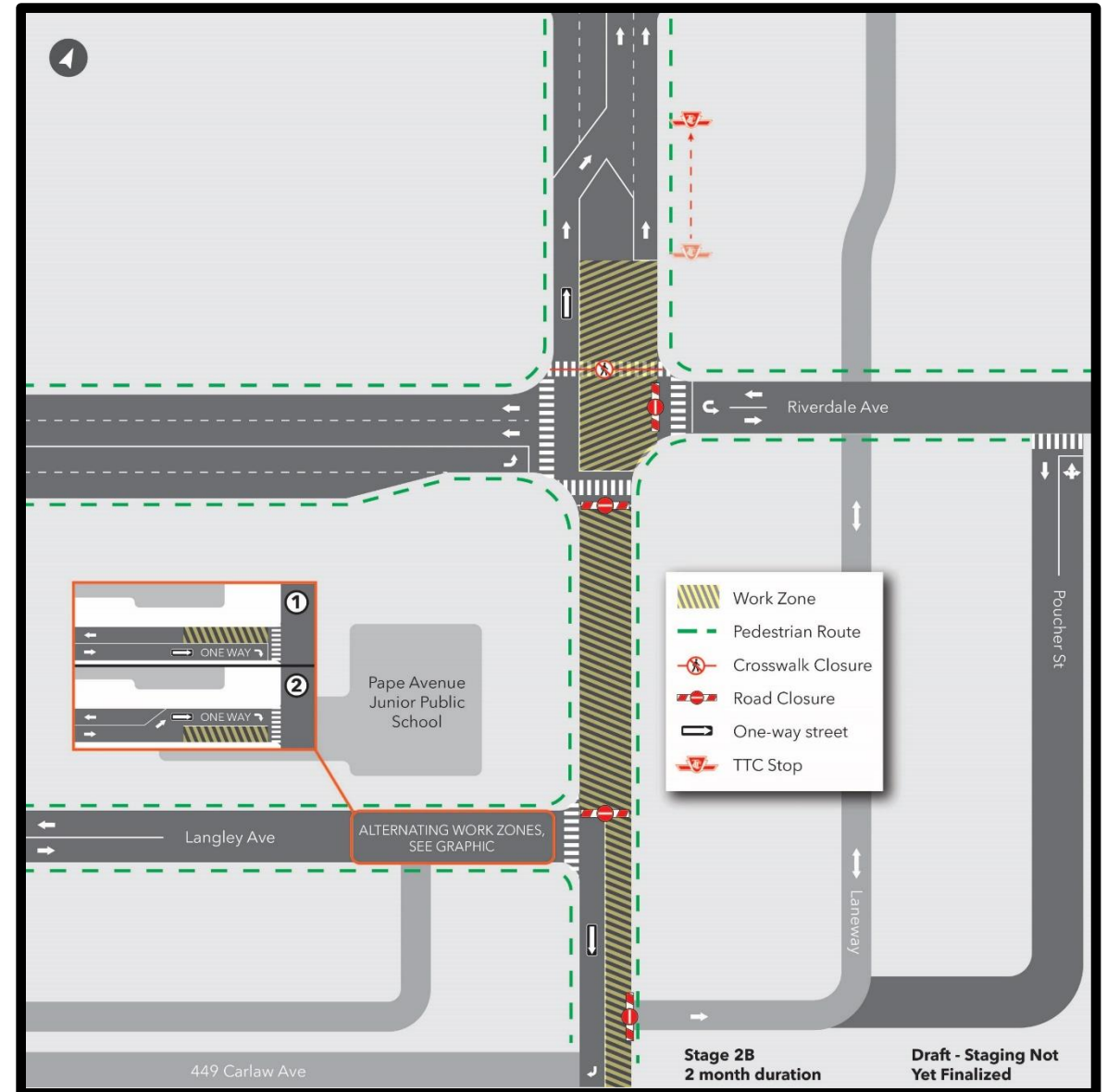
Sewer Relocation Work - Phase 2A

- Phase 2A will continue combined sewer installation and will also mark the start of watermain installation.
- Key impacts from phase 2A:
 - Full closure of Pape Avenue between Langley and Riverdale
 - South crosswalk closure at Pape and Riverdale
 - Pape reduced to one lane southbound between Langley and the 449 Carlaw plaza.
 - No vehicular access to the laneway east of Pape and south of Langley
 - Langley Avenue reduced to one lane south of Pape Avenue JPS
 - East-south one-way traffic from east end of Langley Avenue south to 449 Carlaw plaza, with traffic exiting through the plaza
 - Street parking removal on Langley Avenue adjacent to the work zone.
- The work zone on Langley will alternate between the north and south side of the road. Pedestrian routes and traffic circulation will remain unchanged.



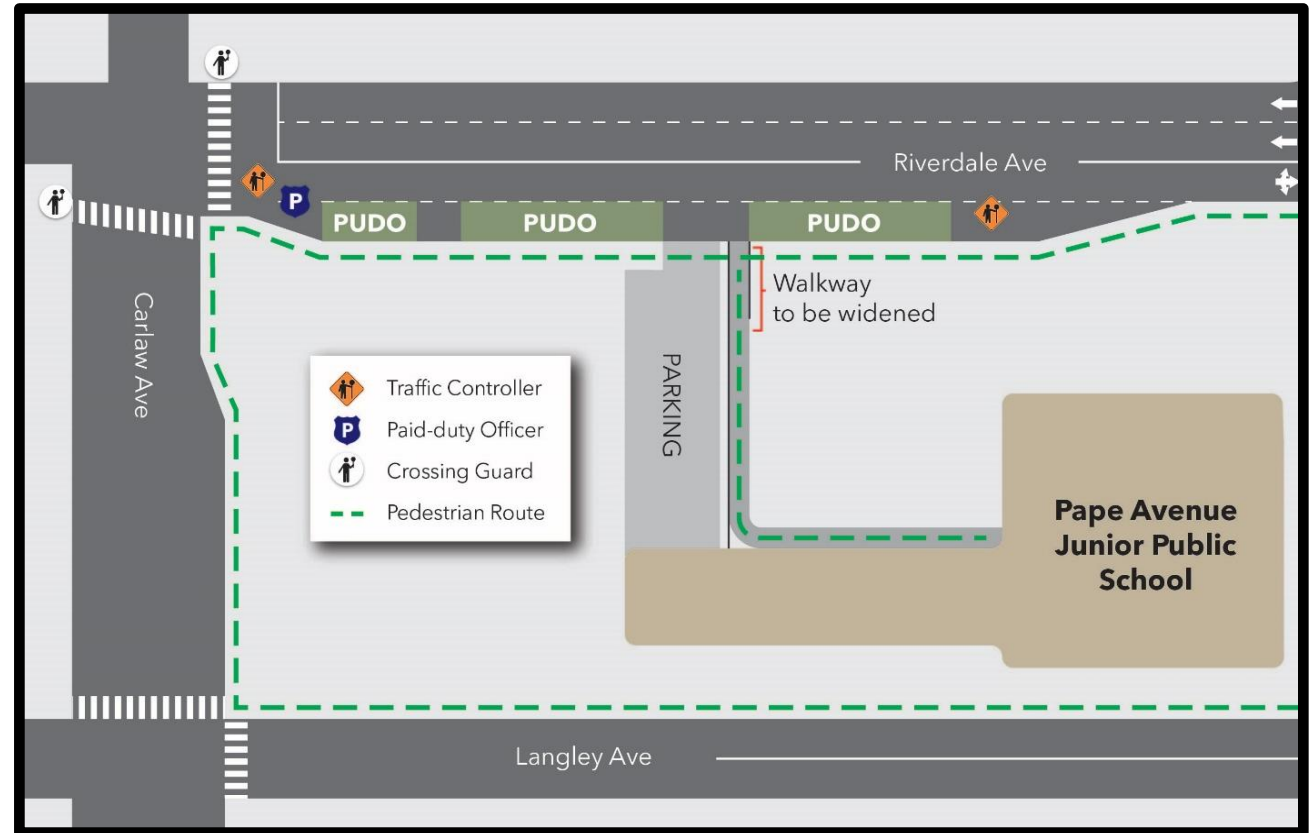
Sewer Relocation Work - Phase 2B

- Phase 2B will be an adjustment to phase 2A to finalize the combined sewer installation, connect it, and continue watermain work. It will introduce an additional construction area within and north of the Pape and Riverdale intersection.
- Additional impacts in phase 2B:
 - Full closure to vehicles on the east side of Pape Avenue in the Pape-Riverdale intersection
 - Eastbound traffic approaching the intersection will divert north onto Pape, westbound traffic approaching the intersection will divert north/south through laneway or turn around.
 - Pape Avenue to be converted to one-way northbound between Riverdale and Withrow
 - The northbound TTC stop on Pape north of Riverdale will be relocated slightly north to move it away from the construction zone.
 - The south crosswalk at Pape and Riverdale will reopen, and the north crosswalk will close.
- The work zone on Langley will alternate between the north and south side of the road. Pedestrian routes and traffic circulation will remain unchanged.



Riverdale Pick-up Drop-off (PUDO)

- Metrolinx will implement the Riverdale Avenue PUDO before the start of Clearway's sewer relocation work phase 1 in September.
- The 2024-2025 school year will begin with the Riverdale PUDO already in place; it will remain in place until the conclusion of sewer work on Pape Avenue.
- The TDSB has widened the walkway in the area shown on the graphic.
- Metrolinx will work with Pape Avenue JPS to communicate this change to parents ahead of the school year.
- Crossing guards, traffic control persons, and paid-duty officers will be on site to control traffic and assist where necessary.



Replacement Parking at 449 Carlaw Plaza



- With the commencement of sewer replacement work, a greater number of street parking spots will be removed.
- During this phase, Metrolinx will provide an expanded parking area for approximately 40 cars on the site of the former Mobil gas station in the 449 Carlaw Plaza.
- A laneway will be constructed west of Pape between Langley and the plaza for pedestrian and vehicle access.
- As with the previous stage, Clearway will be using a separate section of the lot for material storage and worker parking. Physical separations will be put in place to reduce interface between the permit parking lot & associated pedestrian walkways and the Clearway areas.
- Flagpersons will be on site during work hours to direct pedestrians and vehicles and ensure safety.
- Metrolinx will work with the City to determine logistics around parking access and management.

Long-term Noise Barrier

Recent Additions – Mesh and Lighting

- In response to feedback from the TDSB and the community, two additions have been made to the noise wall: additional lighting and mesh to prevent balls from entering into the area between the noise wall and the wooden fence.
- The lighting adds additional illumination to the covered walkway for safety.
- The mesh solution will be installed within the coming weeks pending confirmation of timing from the TDSB.



Mesh mitigation

Metrolinx-owned Properties Update

Metrolinx-owned Properties – Demolitions

- To enable future construction, Metrolinx has acquired the properties at 449 Carlaw Avenue (the former No Frills Plaza) and the houses on the west side of Pape from 388-402 Pape Avenue.
- The remaining buildings on these properties will be demolished to make way for construction and site operations.
- We currently anticipate demolition starting late in the fall – this is subject to change. We will advise the CLC of more concrete dates when available and will send notification to the community.



Properties to be demolished are outlined in red

Action Items

#	Questions Asked / Action Item	Response/Resolution	Due Date / Status
1	Residents were concerned about being able to exit on the east side of Pape Ave with their vehicles.	<ul style="list-style-type: none"> Metrolinx will work with the contractor (Clearway), to provide an exit route for Pape Ave residents through the 449 Carlaw Ave site westbound. 	May 2024 Resolved
2	Concerns were raised related to pedestrian and vehicular traffic for the Toronto Seniors Housing Corporation (TSHC) building at 369 Pape Ave.	<ul style="list-style-type: none"> Pedestrian access and pathways will be maintained for the TSHC building, both for the laneway and along Pape Ave. The pedestrian bridge over the railway lands will be maintained. The map has been updated for the community notice to reflect this pedestrian traffic flow. 	May 2024 Resolved
3	<p>Concerns were raised related to the averages of noise mitigation.</p> <p>Questions were also asked related to discrepancies between the TDSB report and the Metrolinx report.</p>	<ul style="list-style-type: none"> For saw-cutting, the noise wall was effective in maintaining noise levels at or below acceptable levels. The classroom performance has been effective and safe. Upon review of alerts and exceedances, Metrolinx has been meeting noise limits in the playground and classroom. <ul style="list-style-type: none"> When Metrolinx anticipates potential noise exceedances, Metrolinx addresses the noise concerns in a proactive fashion. Inside the classroom 55dbA is the standard for noise generators within the classroom, as determined by the TDSB. Metrolinx is maintaining construction noise levels in the playground at safe levels. The consultant report discrepancies were discussed during the CLC and explained. Further discussion with interested CLC members can be arranged. Action item: Paul to meet with Cara to discuss noise monitoring and impact levels. This meeting can be arranged still. 	<p>May 2024 In progress</p> <p>Meeting can be arranged with Cara still.</p>

#	Questions Asked / Action Item	Response/Resolution	Due Date / Status
4	Question regarding a traffic light being installed at Pape and Riverdale intersection.	<ul style="list-style-type: none"> Request for a traffic light to be installed and for Metrolinx to contribute to the payment for this light. A petition has been initiated with the City by Cara and a request was also made for Metrolinx to provide support. Some discussion with Transportation Services has commenced on this topic. 	May 2024 In progress
5	Request to have the Ontario Line contact information signage placed around site.	<ul style="list-style-type: none"> Additional signage has been installed 	May 2024 Resolved
6	Request to have the fencing issue addressed whereby sports equipment (balls) are being stuck in-between the fence.	<ul style="list-style-type: none"> A fabric mesh is being installed and this issue has been resolved. 	May 2024 Resolved
7	Request to have the issue with litter to be addressed with more regularity	<ul style="list-style-type: none"> This typically occurs on weekends. Metrolinx will continue collection on weekends. 	May 2024 Resolved
8	Questions were asked about the building demolitions, haul routes from the plaza during portal excavation and soil conditions.	<ul style="list-style-type: none"> Building demolitions have been covered in this presentation. Regarding haul routes from the plaza, portal excavation and soil conditions Metrolinx indicated that the work is being carried out by a different contractor that is responsible for the underground tunnelling. Metrolinx will have the contractor participate at a future meeting to share details. 	September 2024 Ongoing
9	Site-visit with CLC members and Clearway to communicate safety measures and introduce community to raise any concerns. Should have proactive approaches to describe how we will work with community.	<ul style="list-style-type: none"> Metrolinx will coordinate a site visit with the appropriate parties following the completion of contractor onboarding, to ensure a productive site visit related to the work of Clearway. Update: Clearway will mobilize in September. 	September 2024 (date to be confirmed)



Discussion

