

GO Expansion

Kitchener Fourth Track and Bloor Station (TTC Connection) Construction Liaison Committee

Thursday, August 8th, 2024

 **METROLINX**



AGENDA

- Welcome & Introductions
- Land Acknowledgment
- Safety Moment
- GO Expansion Overview
- Bloor TTC Connection
 - Project Overview
 - Project Timeline
 - Work Progress
 - What To Expect Next
- Committee Discussion
- Community Engagement

Land Acknowledgement

LAND ACKNOWLEDGEMENT

Let us take a moment to acknowledge we are on lands that have been, and continue to be, home to many Indigenous Peoples including the Anishnabeg, the Haudenosaunee and the Huron-Wendat peoples.

We are all Treaty people. Many of us have come here as settlers, as immigrants or involuntarily as part of the trans-Atlantic slave trade, in this generation, or generations past.

We acknowledge the historic and continued impacts of colonization and the need to work towards meaningful reconciliation with the original caretakers of this land.

We acknowledge that Metrolinx operates on territories and lands covered by many treaties that affirm and value the rights of Indigenous communities, Nations and Peoples.

We understand the importance of working towards reconciliation with the original caretakers of this land. At Metrolinx, we will conduct business in a manner that is built on a foundation of trust, respect and collaboration.



Safety Moment

GO Expansion Overview

The GO Expansion program will provide a range of improvements across the GTHA:

More all-day service



Service in both directions



Capacity for trains every 15 minutes or better



Faster and more efficient fleet



More accessible stations



An expanded Union Station



Over 10,000 weekly trips from 3500 weekly trips in 2019

New trains will reach speeds of 140km/h between stations, making the GO Train faster than taking a car in virtually every instance

Improvements to stations access and boarding and alighting

Capacity for train and passenger movements for the rest of the century

Current

GO Expansion

01



Every 30-60 minutes
limited weekend service



Trains every 15 minutes or
better

02



Most lines
peak direction only



Two way

03



Most lines
rush hour only



All day, everyday

04



Diesel service

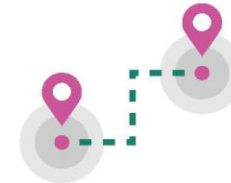


Faster, electrified
service

05



A commuter system



A regional backbone
connecting communities

06



3500 trips/week in 2019



Over 10000 trips/week

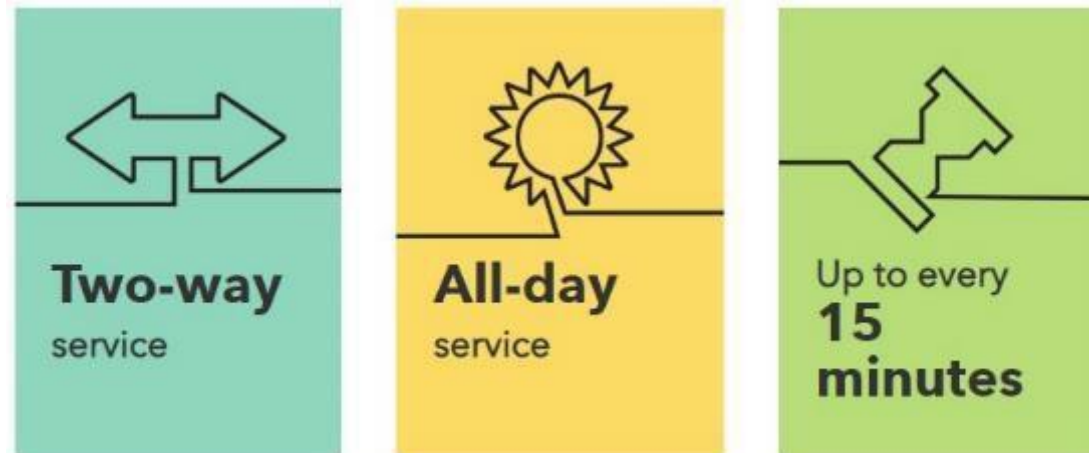
WHAT ARE WE DOING

Metrolinx GO Expansion Program

Metrolinx is working to transform the way the region moves by building a seamless, convenient and integrated transit network across the Greater Golden Horseshoe. Over the next 10 years, Metrolinx is transforming the existing GO rail system to deliver a whole new rapid transit experience to your community. With more frequent train service you will have more options to get where you need to go.

Kitchener GO Line Expansion

The Kitchener 4th Track project is a segment of work that is a part of the overall GO Expansion program. The realignment of the West Toronto Railpath will facilitate the new track to be installed and allow for more trains to be added to the Kitchener line. The Kitchener GO Line Expansion will bring all-day, two-way GO service for people across Toronto, Brampton and Kitchener.

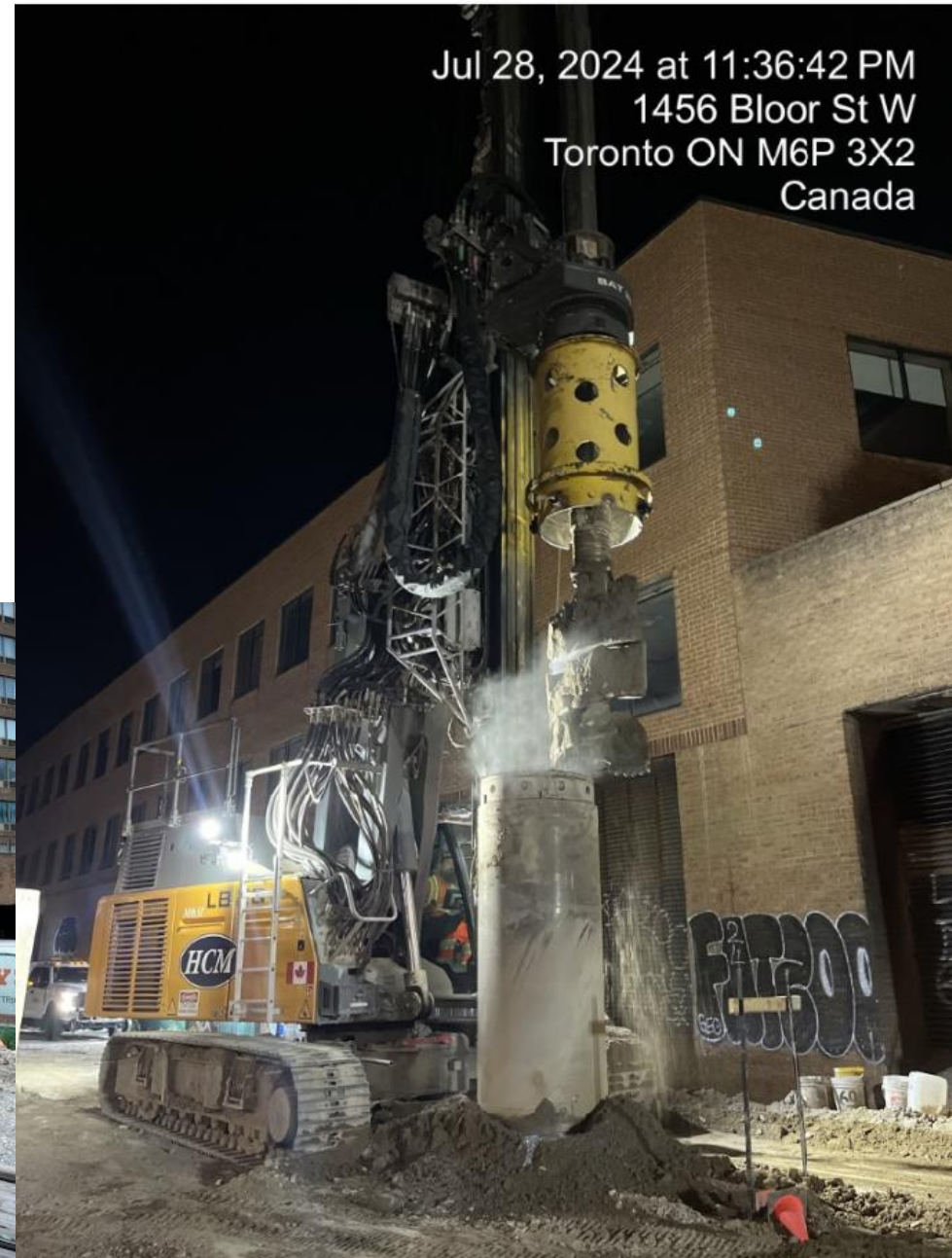


Bloor TTC Connection Project Overview

COMPLETED

Shoring wall for the Pedestrian Box structure - Stage 1

- Shoring wall stage 1 has been completed.

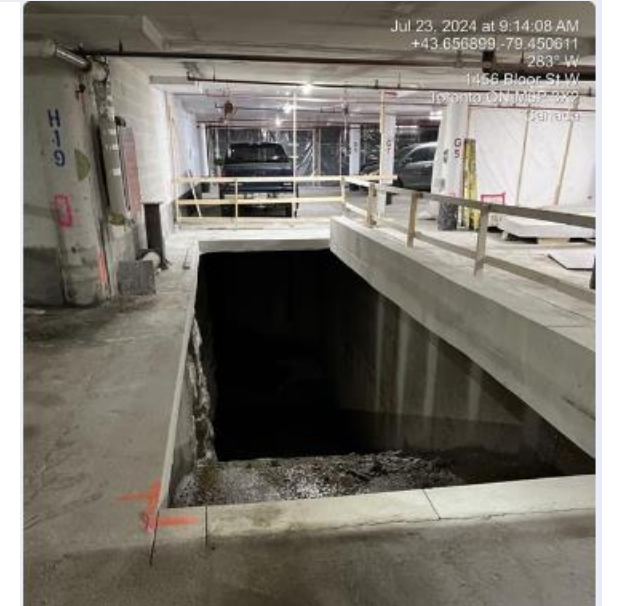


Jul 28, 2024 at 11:36:42 PM
1456 Bloor St W
Toronto ON M6P 3X2
Canada

COMPLETED

Opening of the Stair access from Crossways to the Dundas west Station

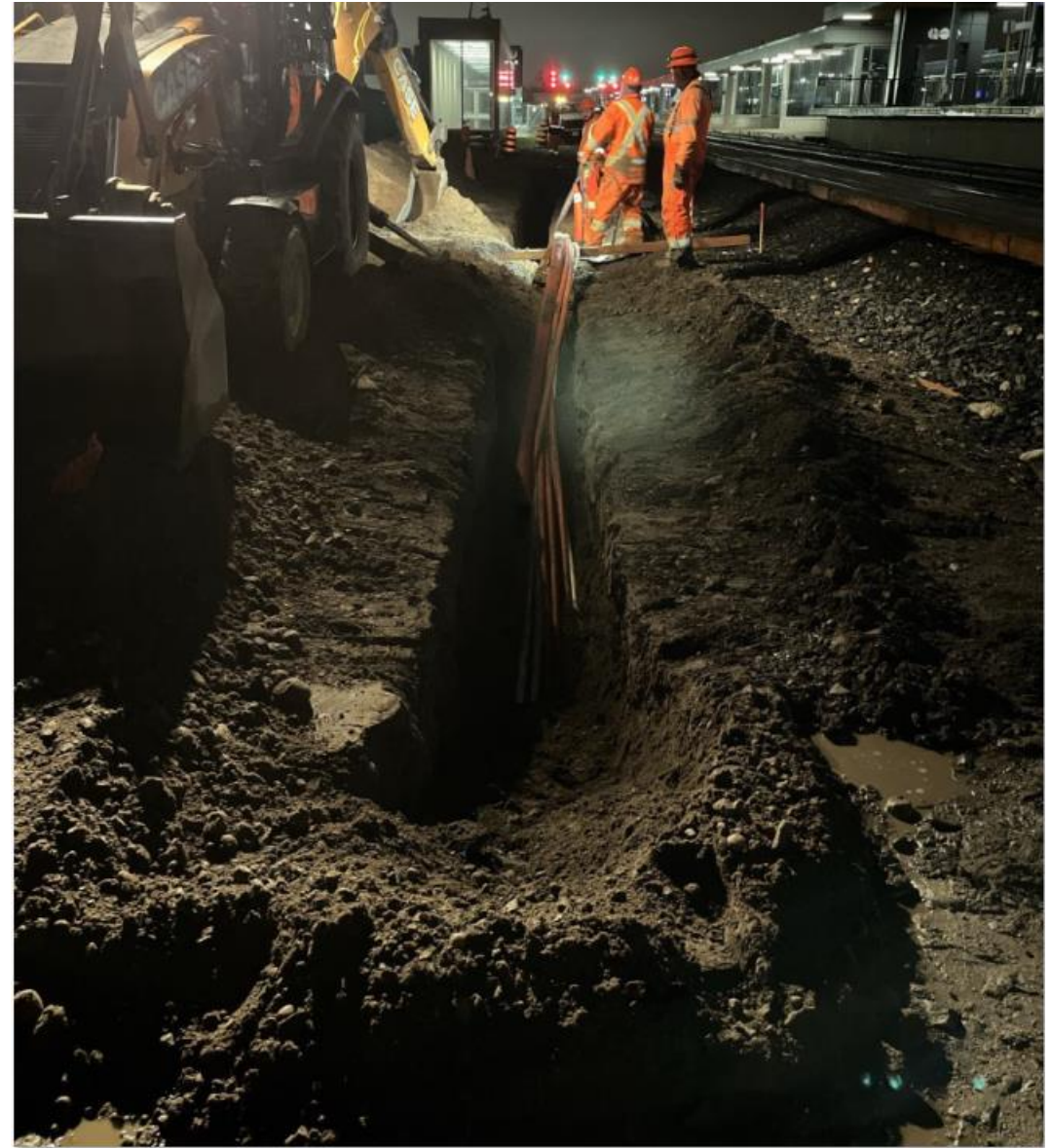
- Completed the opening of the stairs (from future concourse level) to the Westbound platform of the Dundas Street West TTC station.



IN PROGRESS

CN/Bell 360 line relocation - Phase 2

- Relocation of the CN and Bell 360 line away from the future Pedestrian box structure. The cables will be installed in between tracks and shoring wall



IN PROGRESS

Renovation and repairs inside the Crossways building

- Repairs inside the Crossways building at P1 as well as P2 level is continuing.



IN PROGRESS

Installation of the hoarding and conduit at Bloor GO station

- Installation of the hoarding and conduit at Bloor GO station



WHAT TO EXPECT NEXT

The Pedestrian box structure Construction

- Completion of the Shoring Wall
- Jet Grouting
- Excavation
- Waterproofing

Work schedule

- Work scheduled to occur overnight from Sunday to Thursday, from 8 p.m. to 5 a.m. (5 nights a week).

Community Impacts: Noise, Dust and Light.

- Noise and air monitors have been installed around the project area to ensure that the project requirements are met. Any exceedances will be flagged & mitigated, wherever possible.



WHAT TO EXPECT NEXT

Excavation for Stairs and elevators inside the Crossways Building

- Stairs and Elevators opening and excavation scheduled to occur during the day, Monday to Friday, from 7am to 4pm.

Community Impacts: Noise

- The dust from the excavation will be contained inside the hoarded area.
- There will be some noise impact to the businesses close to the work area



← Post

 **GO Expansion** ✓
@GOExpansion

Work to expand the #KitchenerLine line continues. Crews have begun installing the acrylite noise and wind protection panels at Wallace Avenue. Check it out!

More on this project here: bit.ly/3ObRtZQ



3:55 PM · Jan 19, 2024 · 11 Views



Committee Discussion

Community Engagement

COMMUNITY ENGAGEMENT

Updates will be communicated to the community via:

- Canada Post Mail Drops
- Weekly Toronto West e-newsletter
- Project Website (metrolinx.com/kitchener)
- Monthly Construction Liaison Committee (CLC) meeting
- Upcoming Virtual & In-Person Public Meetings
- Upcoming Community Pop-ups
- Toronto West phone number: 416-202-6911
- Toronto West email: TorontoWest@metrolinx.com
- X: @GOExpansion
- Metrolinx Engage

This deck can be translated into a different language upon request by emailing us at TorontoWest@metrolinx.com

