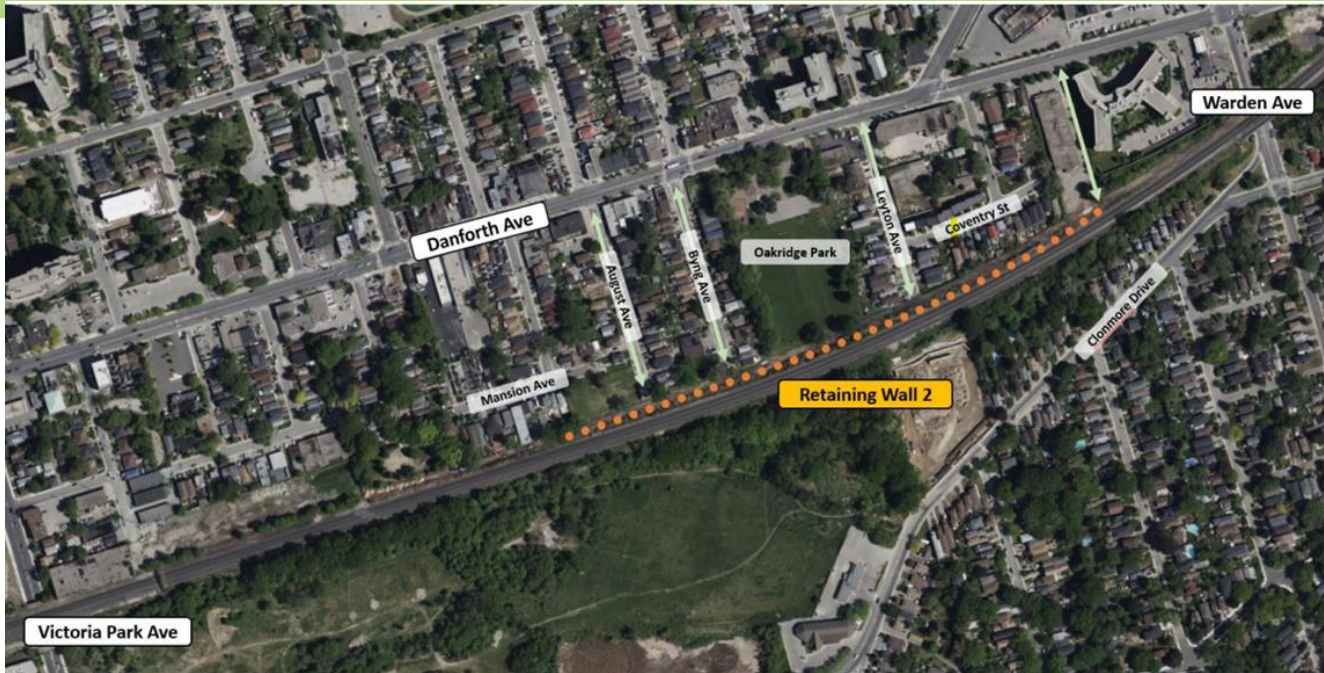


Remediation Work at Retaining Wall 2

August 2024 - November 2024



Project Overview

Metrolinx’s GO Expansion program is delivering more GO service across the network, including trains every 15-minutes or better on the Lakeshore East Rail Corridor. To support GO Expansion, we are upgrading the rail network and our GO stations to enable more frequent and fully accessible services. To enable this improved service, we must widen the railway corridor in this area to build an additional railway track and get ready for future electrification of the route.

What is happening?

In late-July, construction crews will be working on the slope alongside the railway corridor to the northeast of Danforth GO station. For safety reasons, this work needs to take place overnight when there are less trains running along the Lakeshore East rail corridor.

Construction activity	Timescale	Working hours	Description of work
Works to the slope at Retaining Wall 2 - northeast of Danforth GO Station	July 2024- November 30 2024	Sunday- Saturday: 7.30pm-5am (overnight)	We will be using earth moving equipment (diggers, excavators and trucks) to carry out works to the slope. We will also use compacting equipment to make sure the ground is stable, including bulldozers and rollers.

HOURS OF WORK

- For safety reasons, this work needs to take place overnight when there are less trains running along the Lakeshore West rail corridor.
- Dates may be rescheduled due to inclement weather or other unforeseen circumstances.

WHAT TO EXPECT

- Residents should expect some noise, vibration, dust, and site lighting.
- Our staff will take reasonable precautions to minimize disturbances to residents and commuters, including but not limited to the following:
 - Reduced idling of non-essential equipment
 - Pointing lights away from residential windows
 - The work area will be safely secured.
 - White noise back up alarms on vehicles and machinery

TRAFFIC DETAILS

- Increased construction vehicles and equipment can be expected in the vicinity of the work area.

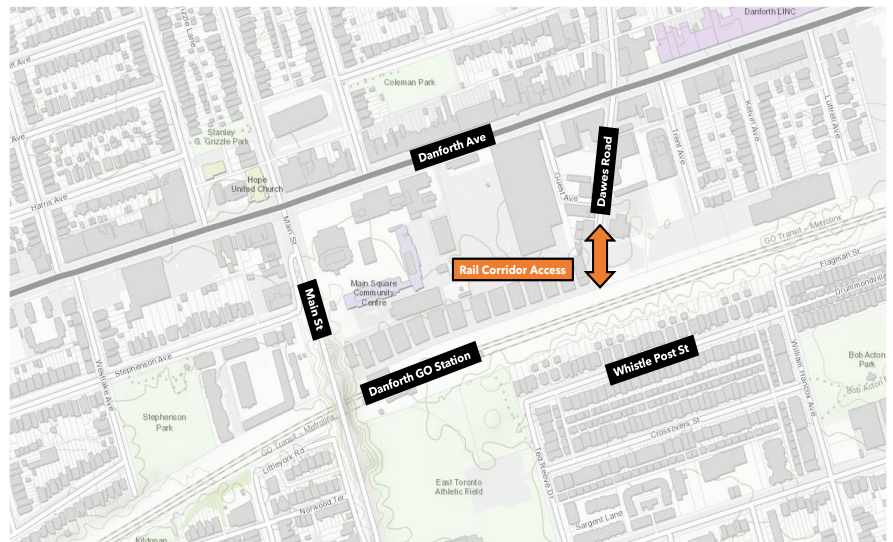
PEDESTRIAN DETAILS

- There are no pedestrian sidewalk closures planned for these construction activities.
- Please continue to exercise caution around active construction sites.

COMMUNITY ENGAGEMENT

- Metrolinx has a dedicated community engagement team in place that works with residents and businesses in the Toronto West area.
- If you have any questions, please contact us using the information provided below.

8 DAWES ROAD SITE



Our site at 8 Dawes Rd is scheduled to be decommissioned as of November 1st, 2024

This notice can be translated into a different language upon request by emailing us at TorontoEast@metrolinx.com

Cet avis est disponible en français sur demande. Si vous êtes intéressé, veuillez envoyer un courriel à TorontoEast@metrolinx.com

Contact Us:

Call us: 416-202-3900

✉ Write to us at: TorontoEast@metrolinx.com

📍 Find us on Twitter [@GOExpansion](https://twitter.com/GOExpansion)

• Visit the website: www.metrolinx.com/projects-and-programs/go-expansion

• Subscribe to our e-blast: www.metrolinx.com/subscribe