

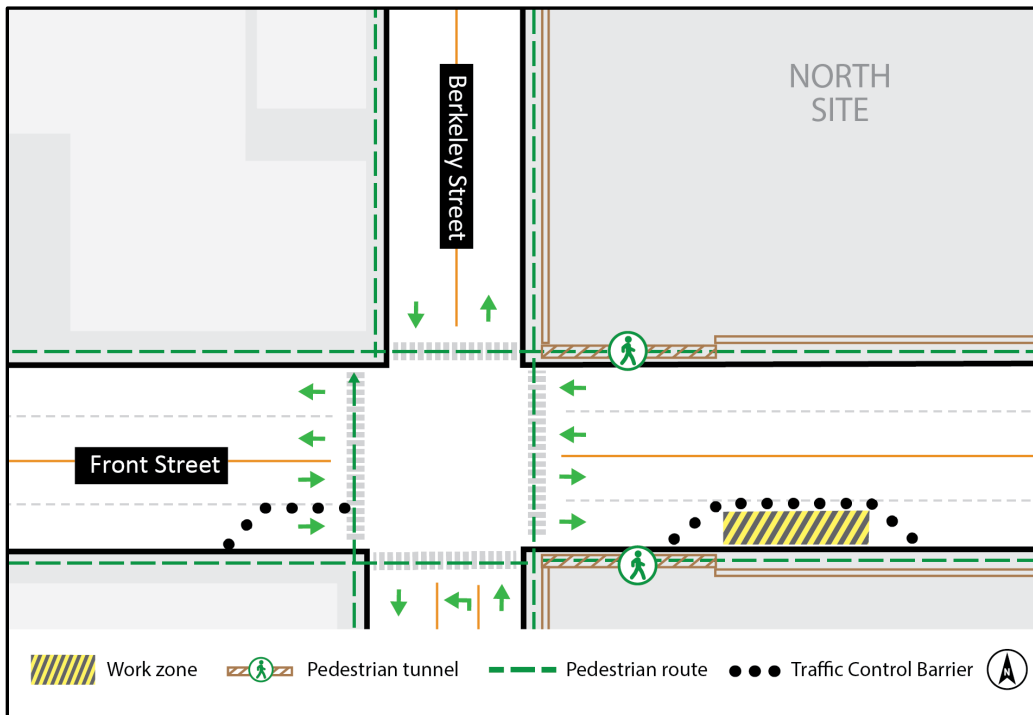
Monitoring device installations on Front Street

Expected start date: As early as August 15, 2024

Duration: Up to two (2) weeks

Hours of work: Weekdays (Monday-Friday), 9:00 a.m. to 4:00 p.m.

Map of Work Area:



What is happening?

- Construction crews will be investigating utilities and installing monitoring devices in the area shown in yellow on the map above to support construction of the future Ontario Line subway tunnels and station.
- Monitoring devices are installed to monitor the area around utilities during construction. They will be installed underground and covered with a flush mount. They are expected to be in place until the completion of the project, and may occasionally be revisited by crews.
- A temporary lane closure is required for crews to safely carry out this work.
- Crews will complete different segments of work, moving within the location identified on the map.

What to expect

- The work is scheduled to begin as early as August 15, 2024, and should be completed within two weeks.
- Work will take place during the weekday, (Monday-Friday), between 9:00 a.m. to 4:00 p.m.
- Crews are expected to be onsite before 9:00 a.m. to set up equipment.
- You may experience noise from work equipment, specifically hydrovac trucks and saw cutting tools as required. Crews will take measures to minimize noise impacts wherever possible.
- All lane closures for work are temporary and intermittent; areas will only be closed while crews are surveying the specific areas.

Front Street partial closure (as noted in the map):

- The westbound curb lane of Front Street.
- Barriers will separate pedestrians and vehicles from the active work zones.
- Transit services will be maintained at all times.

- Two-way traffic will be maintained at all times.
- Access to residential and commercial units in the area will be maintained.
- Signage will be posted advising of the curb lane restriction.
- All the necessary construction permits have been obtained.
- Work may be postponed or rescheduled due to unforeseen circumstances.
- For more information about upcoming station work, please see metrolinx.com/Ontarioline or sign up for the e-newsletter.

About the Ontario Line

- 15.6-kilometre subway line that will make it faster and easier to travel within Toronto and beyond.
- 15 stops and more than 40 connections to other transit, including GO train, subway, LRT, streetcar and bus lines.
- Less than 30 minutes from one end of the line to the other.
- 28,000 fewer car trips each day.

Contact us:

Call us 24/7 at: [416-202-5100](tel:416-202-5100)

Write to us at: ontarioline@metrolinx.com

Find us on X, Facebook, and Instagram:

[@ontarioline](#)

Visit the website:

www.metrolinx.com/ontarioline

Visit our community offices:

770 Queen Street East (near Queen & Broadview)

General hours:

Mondays, Tuesdays, and Fridays: 9:00 a.m. to 5:00 p.m.

Wednesdays and Thursdays: 10:00 a.m. to 6:00 p.m.

Thorncliffe Park:

East York Town Centre
45 Overlea Blvd., Toronto, ON M4H 1C3
Unit 153 (across from the Rogers store)

General hours:

Monday - Friday, 9 a.m. - 5 p.m.