

Ontario Line

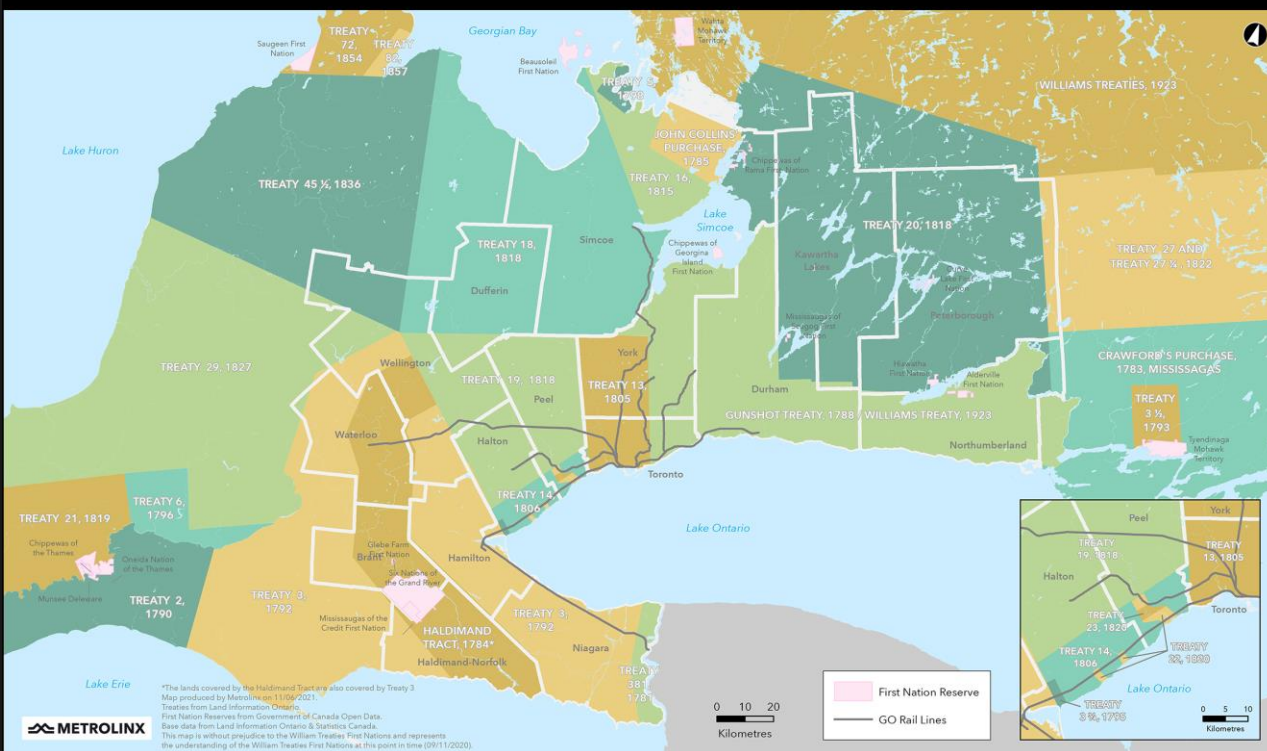
# Osgoode CLC Meeting

July 24, 2024



# Land Acknowledgment

## Treaties and Reserves in the Greater Golden Horseshoe



Let us take a moment to acknowledge we are on lands that have been, and continue to be, home to many Indigenous Peoples including the Anishnabeg, the Haudenosaunee and the Huron-Wendat peoples.

We are all Treaty people. Many of us have come here as settlers, as immigrants or involuntarily as part of the trans-Atlantic slave trade, in this generation, or generations past.

We acknowledge the historic and continued impacts of colonization and the need to work towards meaningful reconciliation with the original caretakers of this land.

We acknowledge that Metrolinx operates on territories and lands covered by many treaties that affirm and value the rights of Indigenous communities, Nations and Peoples.

We understand the importance of working towards reconciliation with the original caretakers of this land. At Metrolinx, we will conduct business in a manner that is built on a foundation of trust, respect and collaboration.

# Agenda

## Welcome (5 minutes)

- Introduction
- Land acknowledgement

## Presentation (30 minutes)

- Action items
- York Street trackwork
- Construction updates
- Upcoming work
- Look ahead

## Feedback and Discussion (15 minutes)

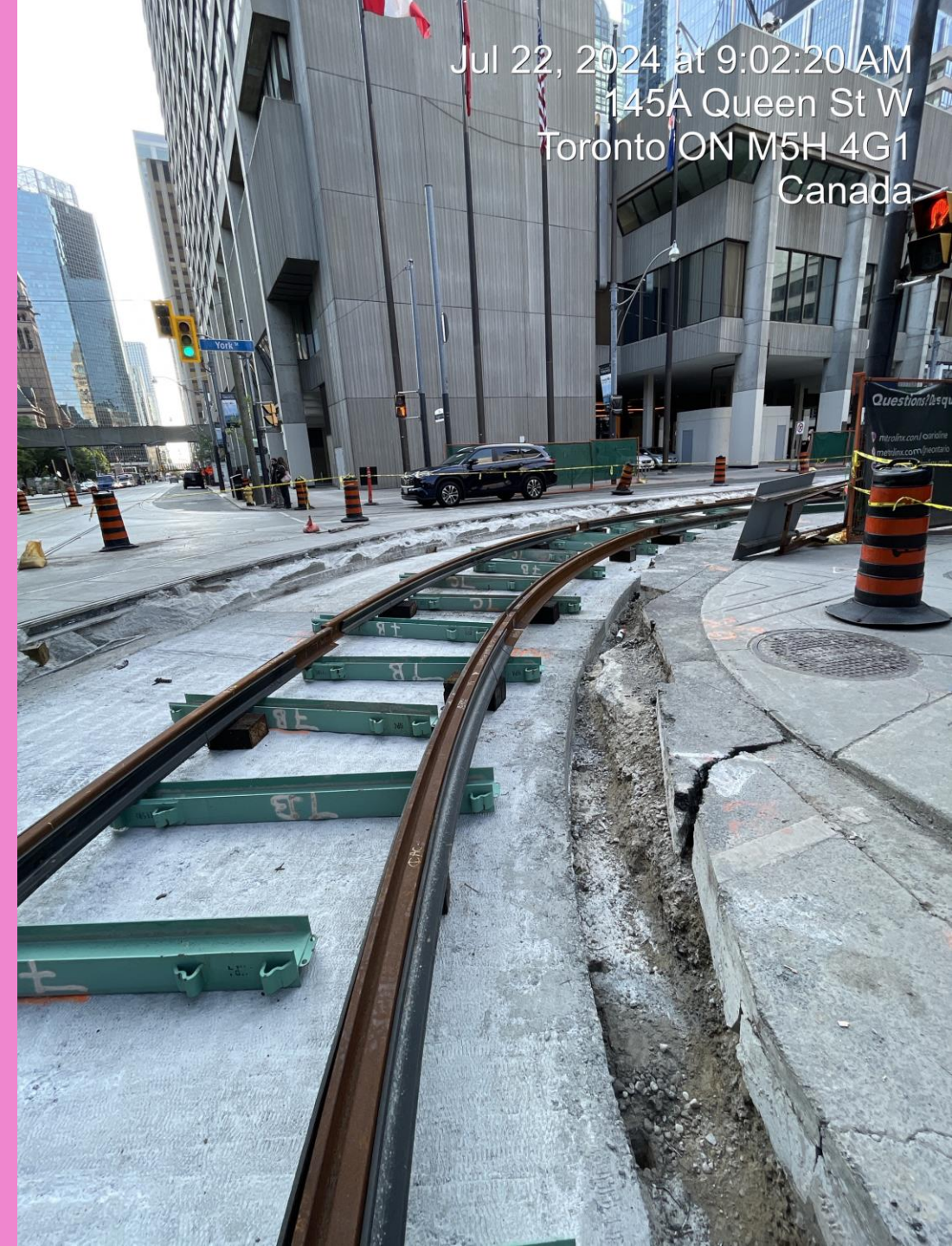
## Meeting Guidelines

- Please help us create a respectful space for both panelists and fellow participants.
- We want to answer as many questions as possible, so please keep your question brief.
- Please ask one question at a time; if you have a second question, we will loop back to you.
- We'll have dedicated time for questions, so please note them down and we'll have an opportunity for you to raise your questions after the presentation.
- Today's meeting will be focused primarily on construction impacts in the Osgoode area, including excavation. As such, for other topics, we may connect with you by phone or email after the meeting or speak to those topics at the Osgoode session.

# JUNE CLC ACTION ITEMS

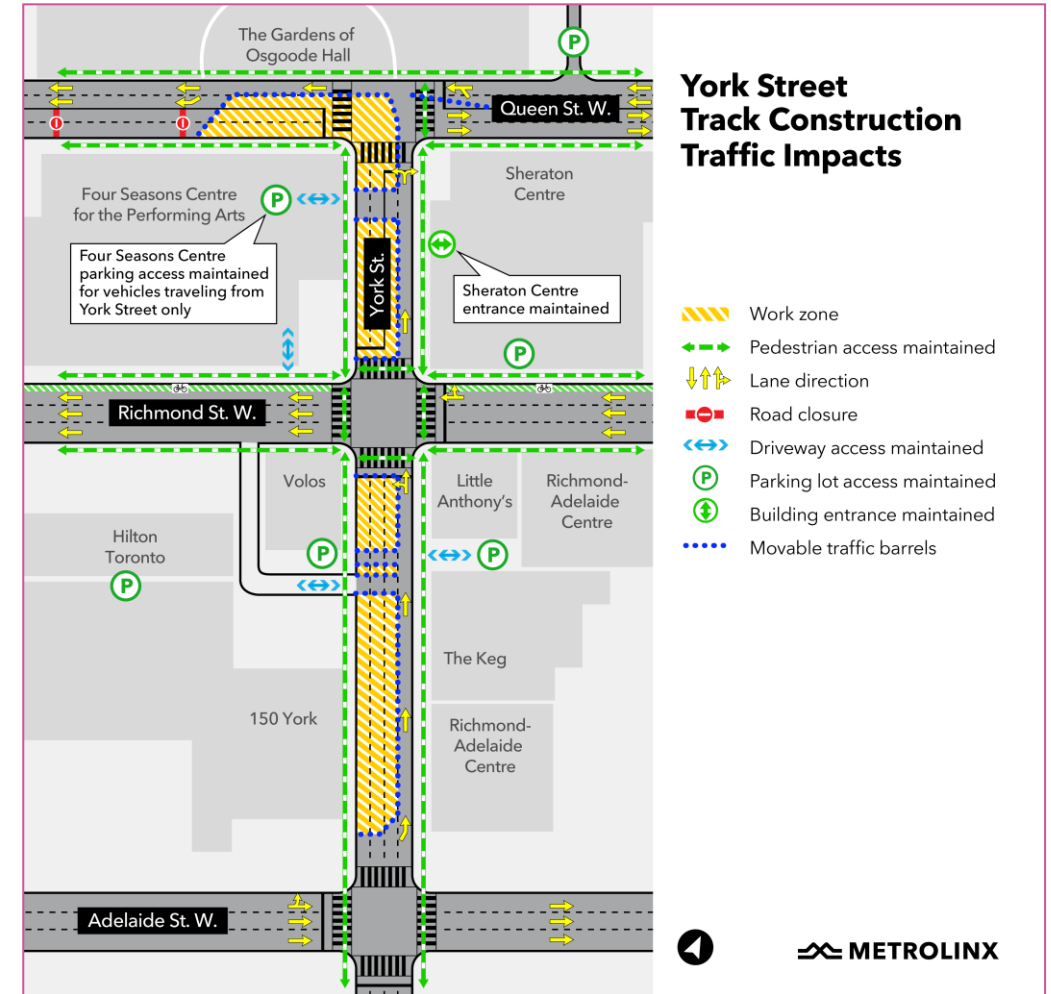
ACTION ITEM	STATUS UPDATE
<ul style="list-style-type: none"><li>OTG to provide update on Osgoode South hoarding design, specific to the pedestrian walkway.</li></ul>	<ul style="list-style-type: none"><li>Walkway has been installed; at this time, there are no plans to amend the hoarding as it is already in place.</li></ul>
<ul style="list-style-type: none"><li>OTG and Metrolinx to share information about monitoring devices.</li></ul>	<ul style="list-style-type: none"><li>Information will be shared during today's CLC discussion.</li></ul>

# York Street Trackwork



# York Street – Queen and York

- This month, crews began working in the Queen Street West and York Street intersection to install streetcar tracks.
- One lane westbound on Queen will be maintained at all times. One lane northbound on York Street will be maintained at all times (refer to graphic for details).
- This specific phase of work is expected to be completed by the end of July/early August 2024.
- No left turns from the northbound lane of University Avenue onto Queen Street West will be permitted during this phase of work.
- No left turns from Queen Street West onto York Street will be permitted.
- A Paid Duty Officer will assist with traffic control and pedestrian safety.
- Click [HERE](#) to read the construction notice.



# Construction Updates - OTG

# Construction Update

## University Avenue Median

- Work is almost completed to realign University Avenue. This work involves shifting traffic lines to the West of the road and is expected to be completed this month.
- Street light relocation in the median is expected late July. Additional lighting for streetlight will be installed on University Avenue.
- For more information, read the Construction Notice [HERE](#)

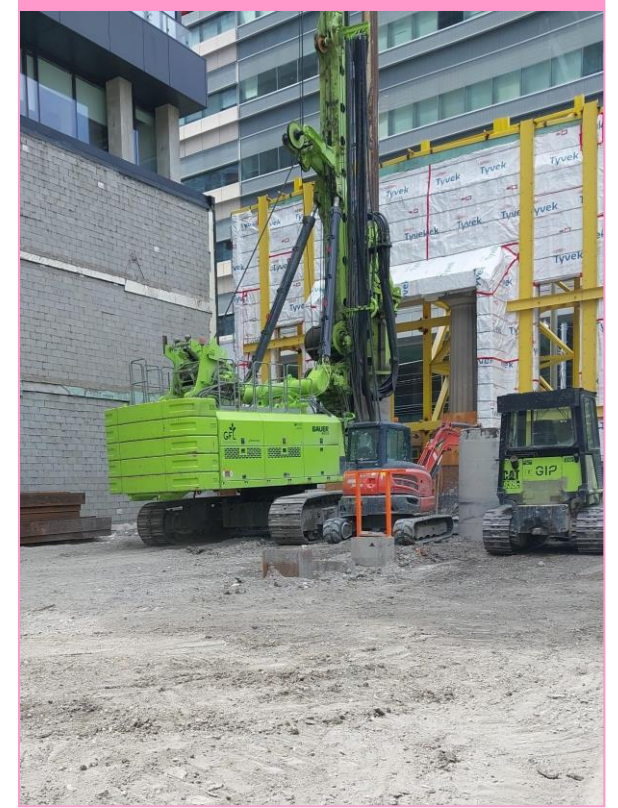
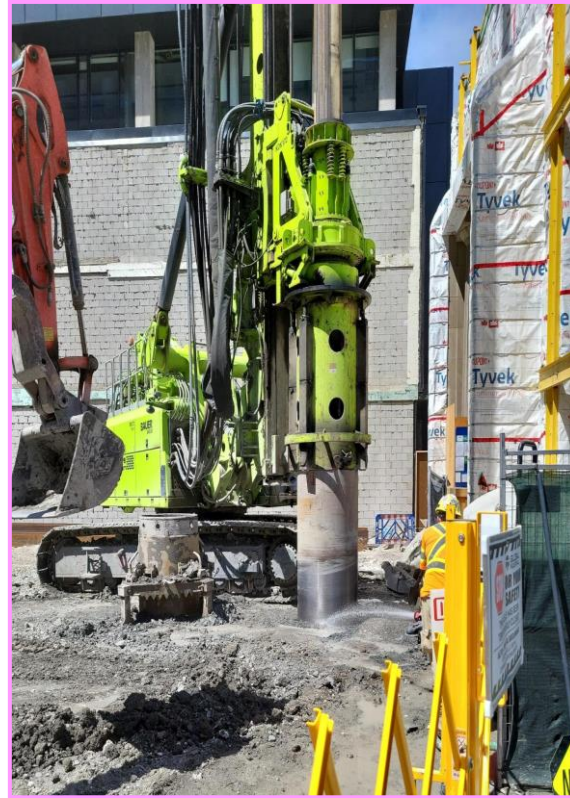


*View of University Avenue median as of July 11, 2024*

# Construction Update

## Piling at the future South station entrance

- Pile drilling is nearing 95% completion.
- This work is expected to be completed by early August 2024.
- Piling has been necessary to complete before starting the excavation work on the construction site to ensure structural stability and support.
- The piles transfer the load of the future structure to deeper, more stable soil layers, preventing settlement or shifting. This foundational work provides a secure base, making the site safe and ready for subsequent excavation and construction activities.



*Piling machine at the South site*

# Construction Look-Ahead

Timing	Activity	Location	Details & Purpose
Summer 2024	Piling	South site	Install foundations to support future excavation of site.
Summer 2024	University Avenue Realignment Work + TTC staircase demolition	North site / Median	Realignment of University Avenue; following realignment, demolition of the former TTC staircase at the Northeast corner of University Avenue and Queen Street West.
Spring - Fall 2024	Ground Monitoring Point Installations + Investigations	Various	Additional ground monitoring devices installed at multiple sites throughout the Osgoode neighbourhood; work expected late spring to Fall 2024; more information to be shared as work is confirmed.
Summer - Fall 2024	Excavation Preparations (Crane installation, acoustic shelter)	South site	Installation of crane for excavation and structure to mitigate the impacts of noise, dirt, dust from the construction sites.
Fall 2024 - Winter 2024	Excavation	South site	Initiate excavation of shaft to the station level, to provide connection with future station platforms.
Fall 2024	Piling	North sites	Install foundations to support future excavation of site.

*\*All construction timelines estimated and subject to change.*

Ontario Line

# Focus on: Excavation - Preparation



## WHAT IS EXCAVATION?

- Excavation, or in this case, shaft excavation, involves creating a vertical or near vertical passageway from surface to the final depth where the subway tunnel and station will be constructed.
- Excavation involves removing the surface layers using excavators, dozers or other suitable equipment.
- With the use of specialized equipment, work crews will remove soil and bedrock to a depth of 40m, deep into the shaft.
- Teams will be excavating sequentially in layers, while continuously installing support systems (shotcrete and rock bolts) to add stability.
- The newly drilled and poured secant pile walls help secure the perimeter of the excavation zone. Shotcrete and rock bolts ensure stability of the shaft itself.
- The excavation will create a future space for station construction and access to the Ontario Line platform level.



*Example of shaft excavation, with walers and struts.*

## OSGOODE SOUTH SITE

- Preparation activities for excavation will commence in July 2024 until mid-October.
  - The first phase of excavation is expected to start in mid-October and will run through the end of 2024.

### **Preparation activities include:**

- Site preparation and staging
- Installation of an acoustic shelter
- Installation of an overhead crane

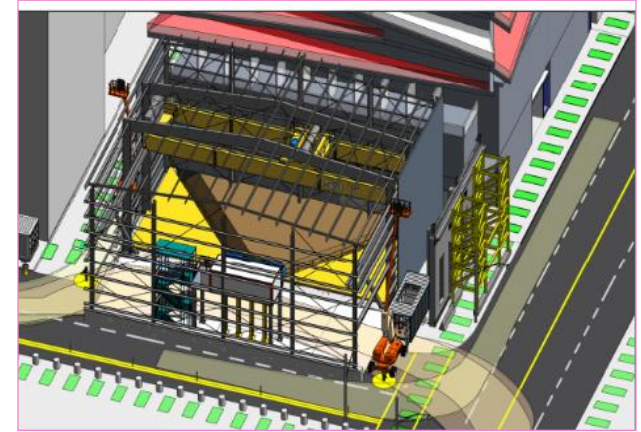


*Expected staging preparation for Excavation in an Ontario Line Station.*

## EXCAVATION PREPARATION - SOUTH SITE

### Acoustic Shelter

- At the south site, an acoustic shelter will be installed over the course of this summer, including ventilation and lighting installation.
- The shelter will be built by a mobile crane, which operates on-site.
- Acoustic shelters are large, steel frame supported tents, acting as protection from the elements for excavation work, as well as a noise barrier for machinery, and to prevent excess dust and dirt from entering the community.
- An acoustic shelter is being installed at the south site due to the footprint (size) of the site and expected working hours required to complete the station construction.



*Expected staging Acoustic Shelter Installation*



*Cross section diagram of the south site shelter*

## EXCAVATION PREPARATION - SOUTH SITE

### Overhead Crane

- An overhead crane will be delivered during excavation preparation works.
- This type of crane can move back and forth across the construction site, allowing it to load materials and deliver them to precise locations; in this case, above the future excavation shaft.
- The overhead crane will be used for excavation inside the acoustic shelter, as it lifts equipment and hoist up the excavated material.



*Example of an overhead crane used inside of an acoustic shelter during excavation*

### Self dumping bins

- These bins are designed to automatically dump excavated contents, ultimately reducing manual effort and maximizing production efficiency and site safety. They will be inside of the acoustic shed; when full, the bin empties into trucks.



*Example of a self dumping bin*

## WHAT TO EXPECT IN THE COMMUNITY

### **During excavation preparation work, community members can expect:**

- This work will start late July, during weekdays from 7:00 a.m. to 7:00 p.m.
- Delivery of equipment, including machines, as part of preparation works.
- To see work ongoing for installation of a crane and acoustic shelter.
- Short-term lane closures and traffic control persons may be in place to ensure safety for the community and workers on-site.



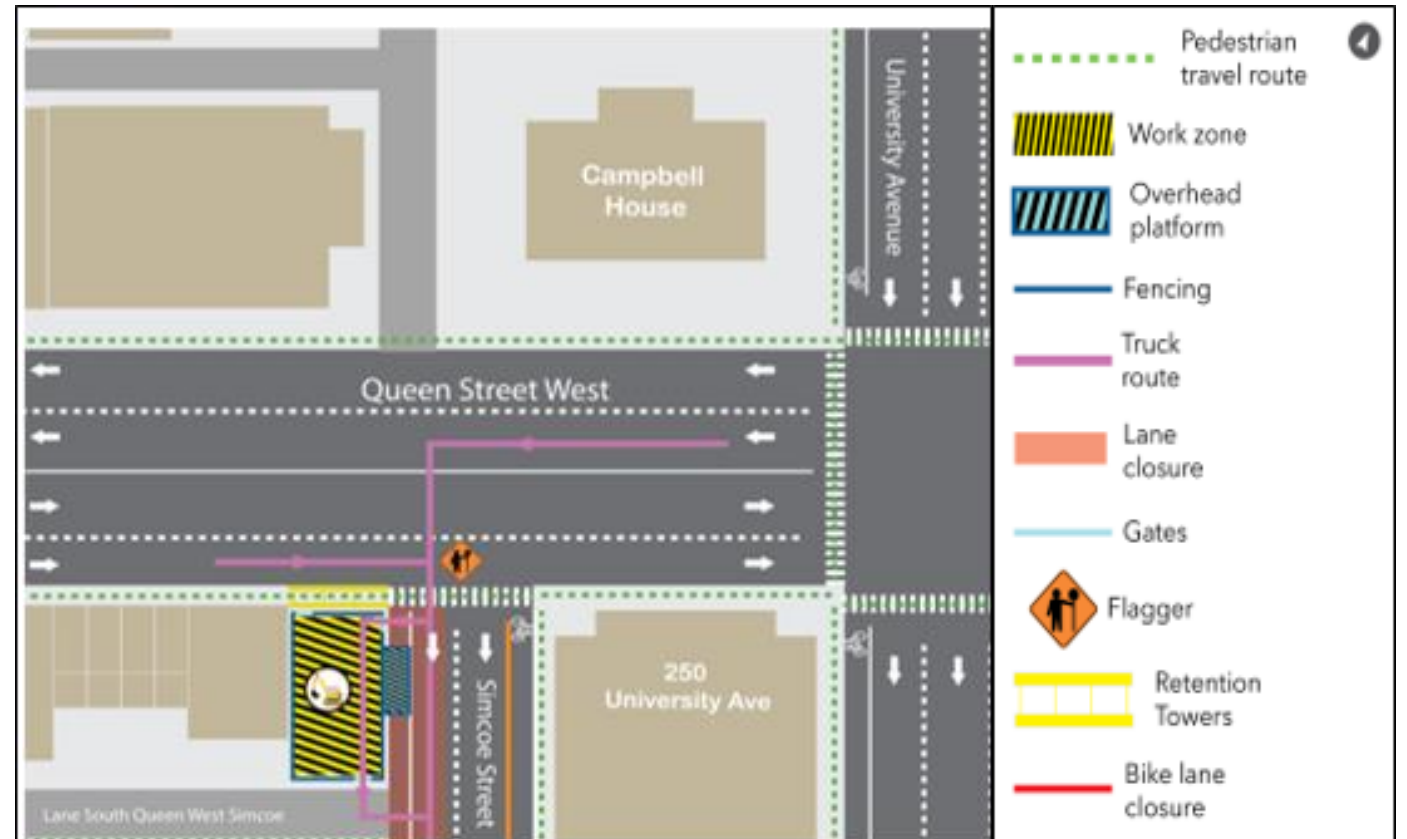
*Example of an acoustic shelter installation in progress*

Ontario Line

# Reducing Impacts to the Community

## SITE ACCESS POINTS

- **At the south site**, trucks will enter the site via the north Queen Street West at Simcoe Street.
- To exit, they will leave via the south gate and travel primarily southbound on Simcoe Street.
- Excavation equipment will remain within work sites for the duration of the piling process.



## CONSTRUCTION SITE PLANS FOR TRAFFIC AND PEDESTRIAN

- **The sidewalk and bike lane on the West side of Simcoe Street will be closed..** Pedestrians and cyclists will be detoured to the east side of Simcoe Street.
- **Simcoe Street will be reduced to one lane,** traveling Southbound only. Do expect more traffic on the roads as a result of the increase in trucks coming to and leaving the site.
- **No impacts to public transit.** TTC access at Queen Street West will remain uninterrupted by the Ontario Line construction activities.
- A reminder for members of the public to **be mindful** and to follow the direction by flag-persons onsite when crossing the access points safely.



## MINIMIZING IMPACTS TO THE COMMUNITY

**To reduce impacts to residents and businesses in the area, mitigations will be in place including:**

- Air quality monitoring to track airborne emissions to ensure that construction activities don't impact the quality of the environment.
- Continuous loop truck routes, reducing need for trucks to reverse using back-up alarms.
- Street sweepers and wheel cleaning as needed to ensure soil and sediment is kept off city streets and sidewalks.
- Expanded paving of frequently used areas minimizes the amount of loose soil that can be disturbed by vehicle traffic further reducing dust emissions.



Street sweeper

## MINIMIZING IMPACTS TO THE COMMUNITY

- **Predicting noise and vibration levels** utilizing modeling and assessing against baseline conditions, in order to identify impacts and planned mitigations (e.g., hoarding and acoustic shelter).
- **Monitoring noise and vibration levels utilizing** sound metres and real-time monitoring systems, to track and control noise and vibration emissions to help minimize disturbances to the community and ensure project regulations compliance; devices are placed on neighbouring buildings within the project zone of influence.
  - Devices generate real-time alerts to allow team to monitor, track and act if needed.
  - When it comes to vibration, devices monitor potential structural impact of vibrations; personal thresholds for perception of vibrations can vary.
- **Site hoarding** to help reduce noise.
- **Acoustic shelter** to reduce noise impact of construction activities, where site working hours and footprint facilitates use.



*Examples of noise monitoring devices in use.*

## KEEPING YOUR COMMUNITY CLEAN

Dust suppression will be **effectively managed** through the use of the following **mitigations** at site:

- **Mud Mats** provide a stable and supportive surface for over soft or unstable ground preventing vehicles and heavy equipment from sinking and reducing the amount of mud created with more frequent passage.
- **Water Suppression** assists by regularly moistening exposed soils and debris preventing dust particles from becoming airborne.
- **Acoustic Shelter** is being built at the south site to contain dirt and debris within the site.



*Example of a mud mat*



*Example of dampening soils to suppress dust*

# Discussion

# Community Engagement

# Community Artwork

We want to hear from you!

- In fair practice across the south civils alignment of the seven (7) stations of the Ontario Line, community consultation for the artwork panels is underway.
- The community's voice will influence the selected artwork for identified site panels.
- Artwork will appear alongside Ontario Line signage for the project.
- Feedback will be collected through engagement with the community via an online survey.
- **To access the survey, scan the QR code or access via [this link](#).**
- In the interim, additional temporary signage to be installed in coming days.



**Reply by August 23rd**

# Community Engagement

Staying connected during construction.

## Monthly public meetings

- Regular committee meetings to discuss upcoming works and share information.
- Next meeting scheduled August 22, 2024 (virtual).

## In-person and virtual consultation with residences and businesses

- Our door is open: share any feedback and concerns with us.

## Construction notices and updates

- Prepared and distributed prior to new / impactful construction works; contact us to be added to the distribution list.

## News, progress and information shared in the Ontario Line newsletter

- Sign up for regular updates and information



*QR code to our Ontario Line newsletter*

# Community Engagement

Metrolinx will keep the community, residents and businesses informed by providing project updates, seeking input and feedback, while addressing questions and concerns effectively and quickly.

## Connect with us:

- Julia Orsini, Community Engagement Advisor,  
[Julia.Orsini@metrolinx.com](mailto:Julia.Orsini@metrolinx.com) or 437-451-0410
- Ross Andersen, Senior Advisor, Community Engagement,  
[Ross.Andersen@metrolinx.com](mailto:Ross.Andersen@metrolinx.com) or 416-418-9218

- ✉ Email [OntarioLine@metrolinx.com](mailto:OntarioLine@metrolinx.com)
- 📞 Telephone 24/7 @ 416-202-5100
- 📢 Ontario Line e-newsletter @ [Metrolinx.com/OntarioLine](https://Metrolinx.com/OntarioLine)

## Follow us on social media:

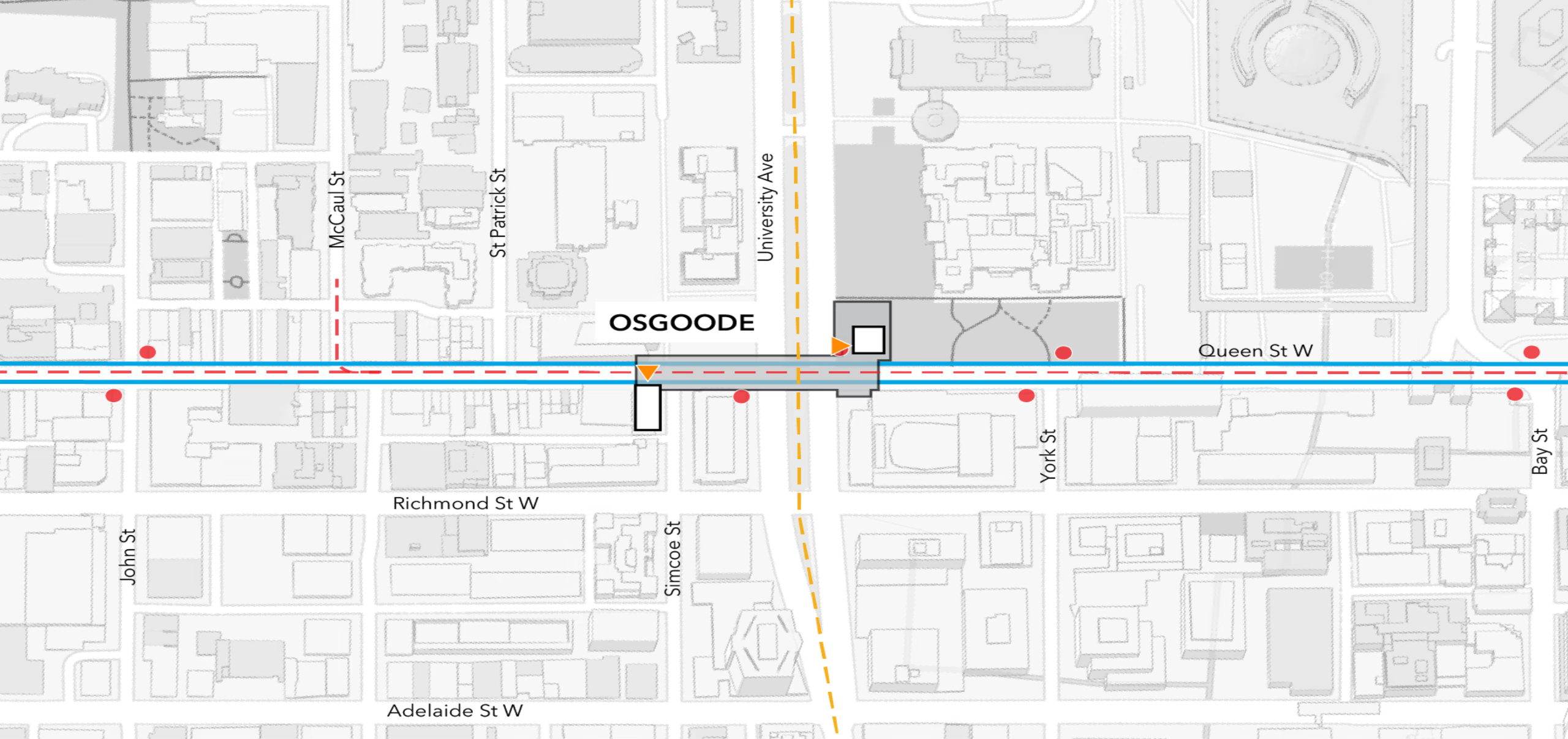
- 🌐 Twitter / Facebook / Instagram @OntarioLine



Our Community Office at 770 Queen Street East, which is the closest office to the Osgoode Station.



# Appendix



## Osgoode Station

— Tunnelled

--- Line 1 Yonge-University

--- Streetcar Line

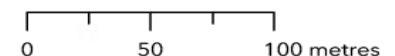
● Streetcar Stop

▲ Station Entrance

□ Station Building

■ Underground Station Area

**Note:** Heritage attributes will be conserved where possible.



**METROLINX**



OSGOODE

ELEVATORS

Osgoode

Artist's rendering – subject to change



Artist's rendering – subject to change



*View of platform in future Osgoode Ontario Line station – Note: Initial concept rendering. Designs - including finishings, signage, and accessibility features - to be informed by further planning and consultation.*

# University Avenue Realignment - Map

