

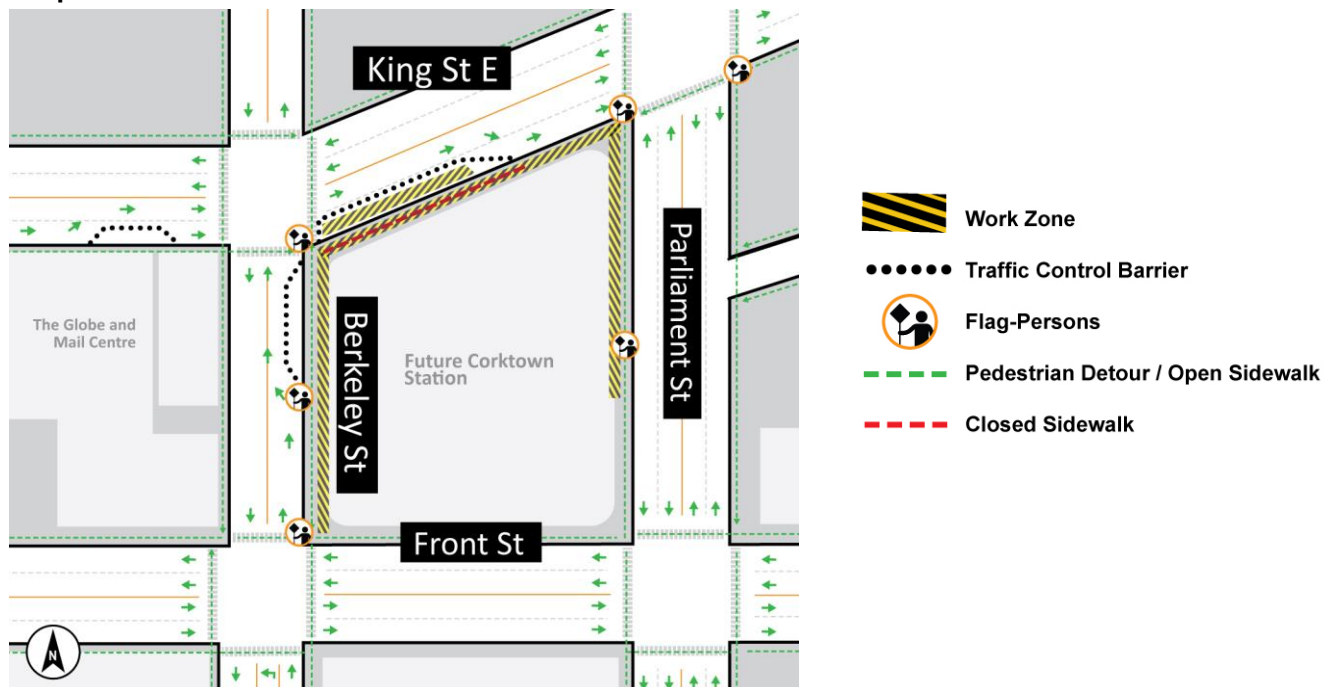
UPDATE: Pedestrian Tunnel (Phase 1) and Temporary Fencing installations: Parliament Street, King Street East, Berkeley Street

Start date: As early as February 12, 2024

Expected duration: Up to 30 days

Hours of work: Weekdays from 7:00 a.m. to 7:00 p.m.

Map of work area:



What is happening?

- To ensure that the public is protected from nearby construction within the site, crews will be building a tunnel to cover the pedestrian walkway on King Street East. This is the first installation phase at this site. Additionally, crews will be replacing portions of the existing hoarding with temporary fencing in preparation for the noise barrier walls that will be installed during the next phase of construction.
- Work will begin as early as February 12, 2024, and is expected to take approximately 30 days to complete.
- Work will take place during the daytime (weekdays) between 7:00 a.m. and 4:00 p.m. from Monday to Friday.

What can I expect and how will it impact me?

Pedestrian Tunnel:

Sidewalk Closures

- Full closure on the south sidewalk on King Street East between Berkeley Street and Parliament Street.

Partial Lane Closures

- The eastbound curb lane on King Street East, west of Berkeley Street and east of Berkeley Street to the west of Parliament Street.
- The northbound right lane on Berkeley Street, south of King Street East.

504 King Streetcar

- The King Street East streetcar schedule will be maintained with no interruptions to service.

Temporary Fencing:

- Temporary fencing will be installed along the eastern, southside of King Street East, the eastern side of Berkeley Street and the western side of Parliament Street. See areas noted on the map.
- Sidewalk access will be maintained on Berkeley Street, Parliament Street and the eastern portion of King Street East.
- Flag-persons will be present to assist and direct transit riders, pedestrians and motorists where sidewalks restrictions and lane closures are in effect.
- Safety barriers will be used to separate motorists and pedestrians from construction zones and active traffic lanes.
- Two-way traffic to be maintained on all streets at all times.
- Clear signage will be posted for transit riders, pedestrians and motorists.
- Crews will take measures to minimize noise impacts wherever possible.
- Equipment will be cleared after every shift.
- All the necessary construction permits have been obtained.
- Work may be postponed or rescheduled due to unforeseen circumstances.
- For more information about upcoming station work please see metrolinx.com/Ontarioline or sign-up for the e-newsletter.



About the project

- 15.6-kilometre subway line that will make it faster and easier to travel within Toronto and beyond.
- 15 stops and more than 40 connections to other transit, including GO train, subway, LRT, streetcar, and bus lines.
- Less than 30 minutes from one end of the line to the other.
- 28,000 fewer cars on the road each day.

Contact us:

Call us 24/7 at: [416-202-5100](tel:416-202-5100)

Write to us at: ontarioline@metrolinx.com

Find us on X, Facebook, and Instagram: [@ontarioline](#)

Visit the website: www.metrolinx.com/ontarioline

Visit our community office:

770 Queen Street East (near Queen & Broadview)

General hours:

- Mondays, Tuesdays, and Fridays: 9:00 a.m. to 5:00 p.m.
- Wednesdays and Thursdays: 10:00 a.m. to 6:00 p.m.

Disponible en français sur demande. Si vous êtes intéressé, veuillez envoyer un courriel à ontarioline@metrolinx.com.