

The Ontario Line

Thornccliffe Park Open House

June 11, 2024



Ontario Line Subway



1 South Alignment of Ontario Line
(Exhibition to Corktown/
Don Yard)

2 North Alignment of Ontario Line
(East Harbour to Science Centre)



15.6 kilometres long



15 stations



As frequent as every 90 seconds during rush hour



227,500 more people within walking distance to transit



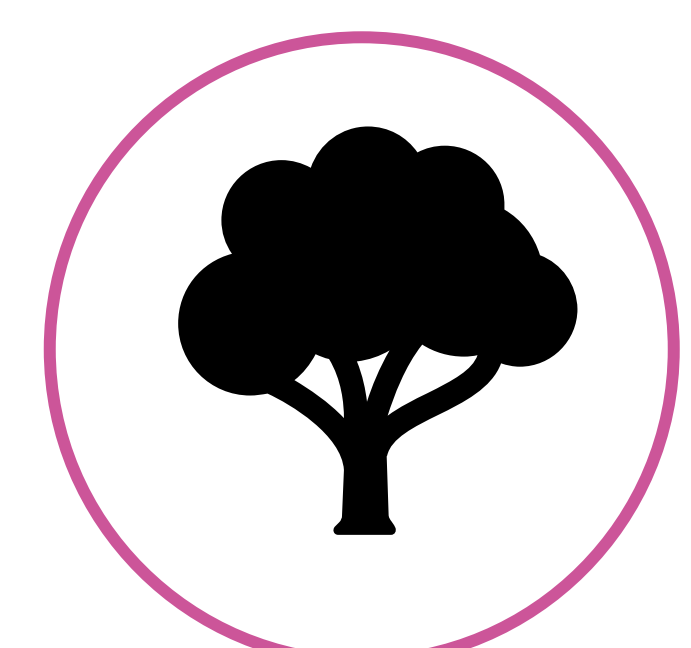
388,000 daily boardings



40+ connections to other transit options



Up to 47,000 more jobs accessible in 45 minutes or less, on average

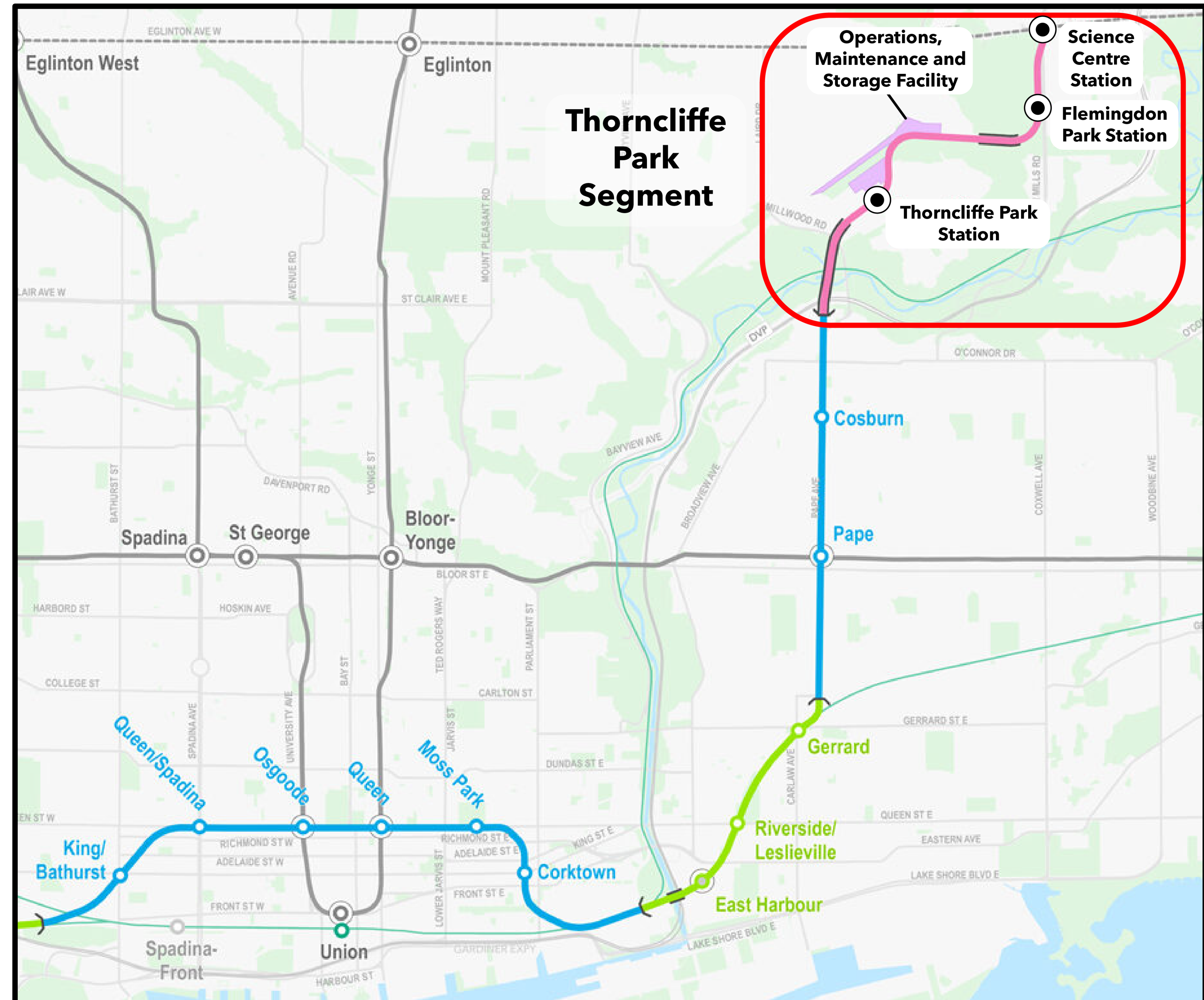


28,000 fewer cars off the road each day

Thorncliffe Park Segment Overview

The Thorncliffe Park Segment of the Ontario Line consists of:

- Three elevated stations (Thorncliffe Park, Flemington Park, and Science Centre stations)
- Two bridges that will carry Ontario Line trains over the Don Valley
- The Maintenance and Storage Facility (MSF) for the Ontario Line



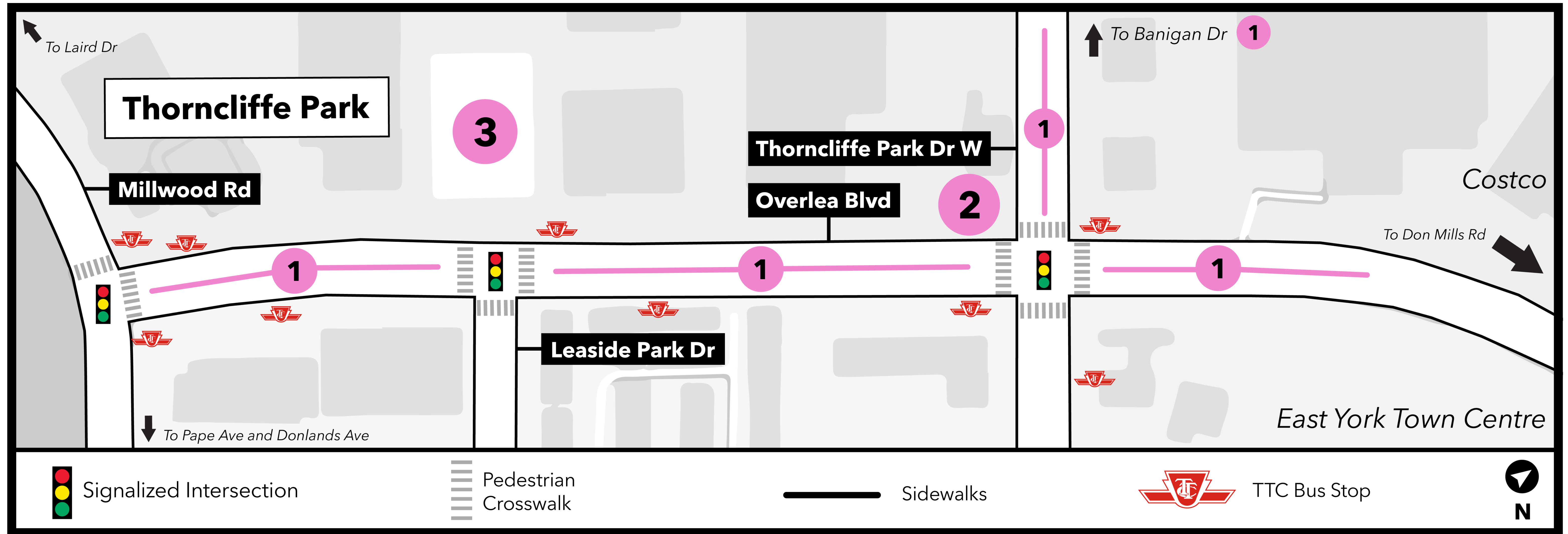
Soil Excavation and Remediation Works in Progress at 10 Overlea Blvd



Recent Milestones

Thornccliffe Park Open House - June 11, 2024

Recent Milestones - June - May 2024



1 Vegetation and tree removal along Banigan Dr, Overlea Blvd, and Thorncliffe Park Dr West

2 Hoarding installation in preparation for demolition of 26 Overlea

3 In progress: Soil excavation and remediation at 10 Overlea in preparation for a future extension of Leaside Pk Dr towards Banigan Dr

Soil Excavation and Remediation Works in Progress at 10 Overlea Blvd



Ongoing and Upcoming Work

Thornccliffe Park Open House - June 11, 2024

Equipment

Meet two of the machines you might see at work during construction:

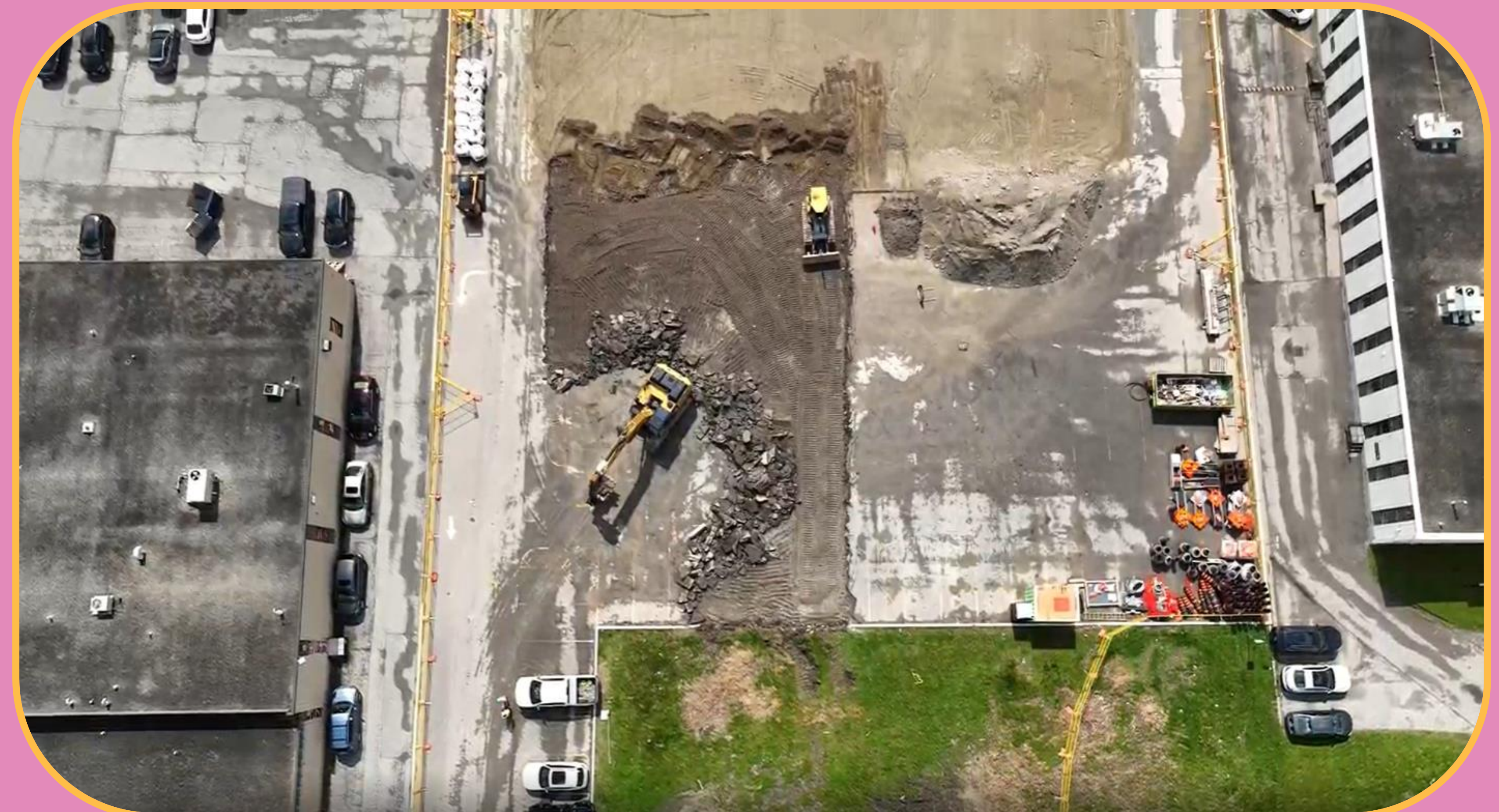
Excavator

Essential to any construction project, excavators can dig, carry heavy material, landscape, demolish structures, and more.



Bulldozer

A bulldozer is a big, powerful machine with a metal blade in front that is used to move material around at construction sites. It can do things like leveling the ground, pushing things, filling areas back in, and clearing land.

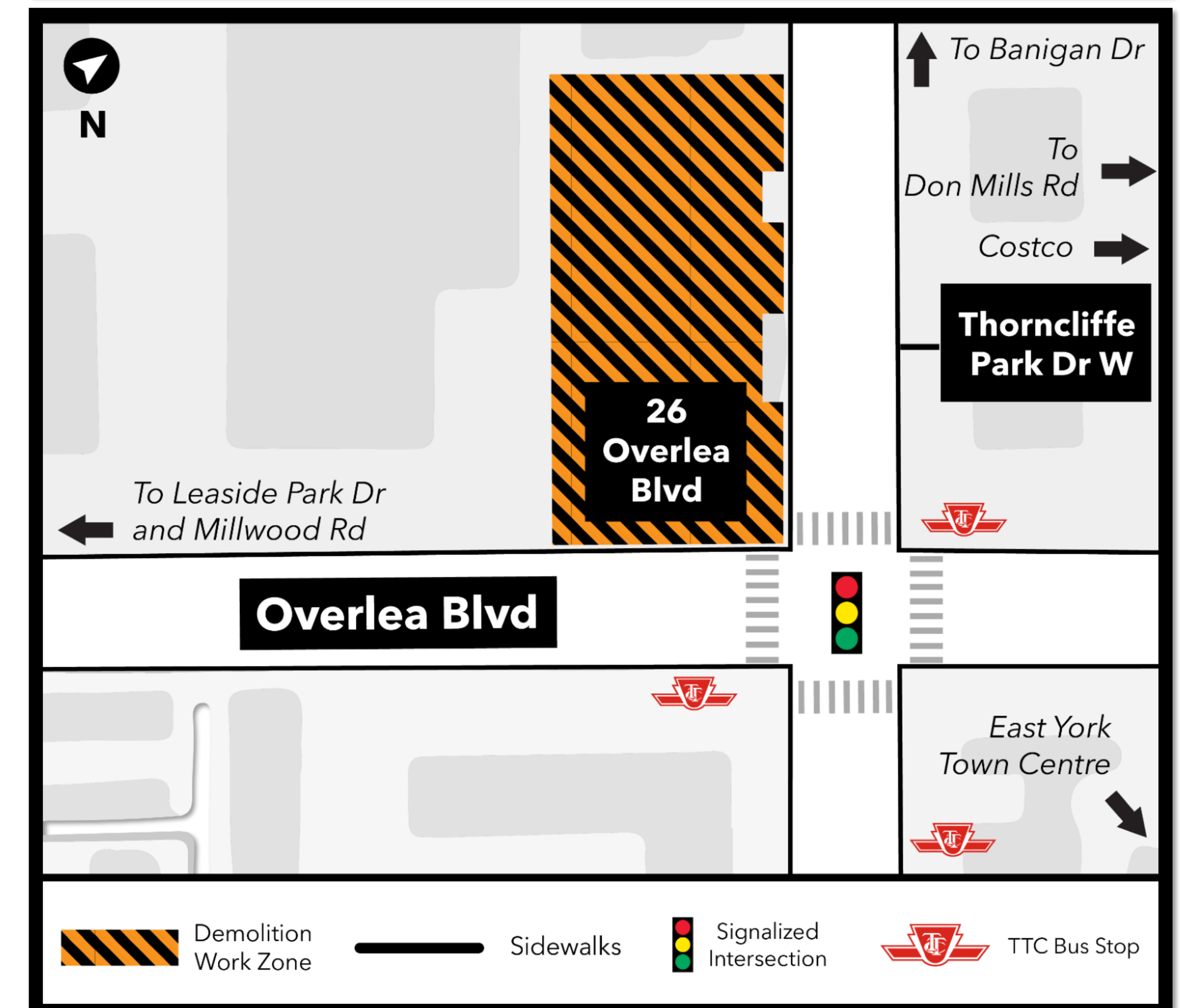


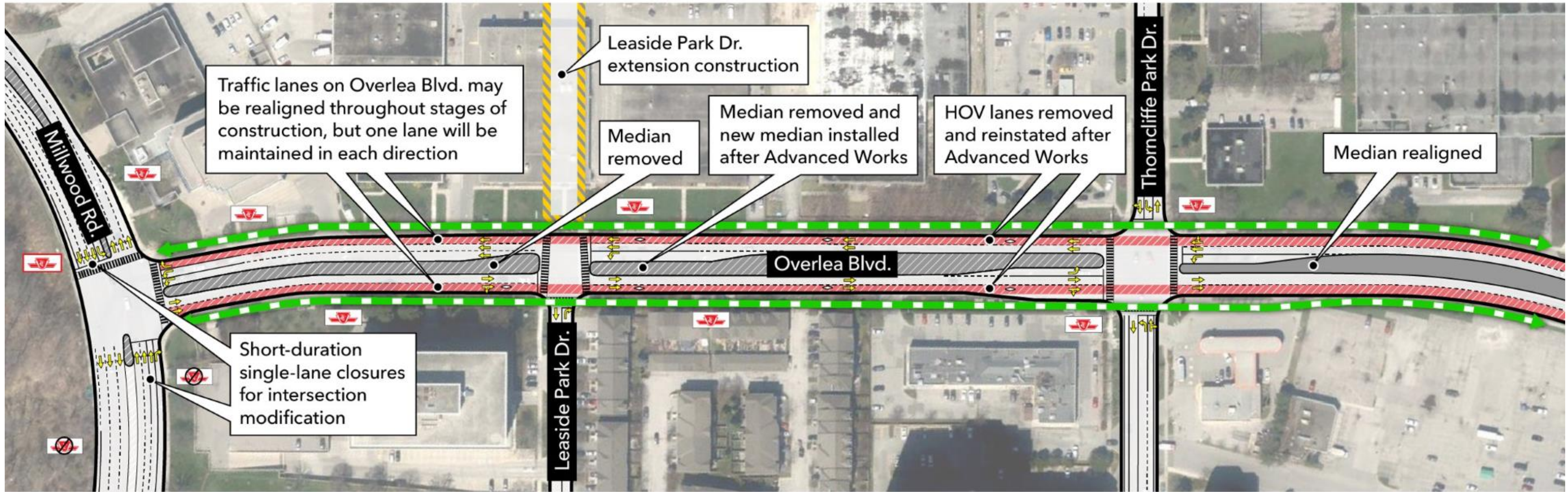
Summer 2024 Construction Look-Ahead

Timing	Activity	Location	Details and Purpose
Summer	Temporary traffic signal installation	Overlea Blvd at Millwood Rd, Leaside Park Dr, and Thorncliffe Park Dr West intersection	Crews will begin the installation of temporary traffic and pedestrian signals. This work will help prepare the site for the removal of the medians along Overlea Boulevard and Millwood Road.
	Median modification	Overlea Blvd and Millwood Rd	Crews will begin work to modify the medians in the centre of the roadway. This work will help prepare the roadway for future phases of Ontario Line construction and traffic patterns. Some medians will be removed and paved over, and some will be rebuilt into a different shape.
	Demolition	26 Overlea Blvd	Crews will begin work to demolish existing buildings and structures on the former retail plaza. This work is necessary to clear the site in preparation for future stages of Ontario Line construction.

Demolition of 26 Overlea Blvd

- Crews are preparing to demolish 26 Overlea Boulevard.
- This retail plaza (the former Wendy's and Tim Horton) is located on the northwest corner of Overlea Boulevard and Thorncliffe Park Drive West.
- Metrolinx now owns the site.
- This work is necessary to clear the site in preparation for future stages of Ontario Line construction.





Overlea Blvd. Advanced Works Traffic Impacts

18-month duration

Pedestrian path accessible

Lane direction

TTC bus stop maintained

TTC bus stop removed

TTC bus stop new

Note: Sidewalks maintained with short-term closures expected throughout construction. Temporary pedestrian paths will be provided during short-term closures.

Note: Temporary TTC bus stop relocations will be determined at a later date and adhere to the City's prescribed maximum distance from existing stops.



Construction Mitigations



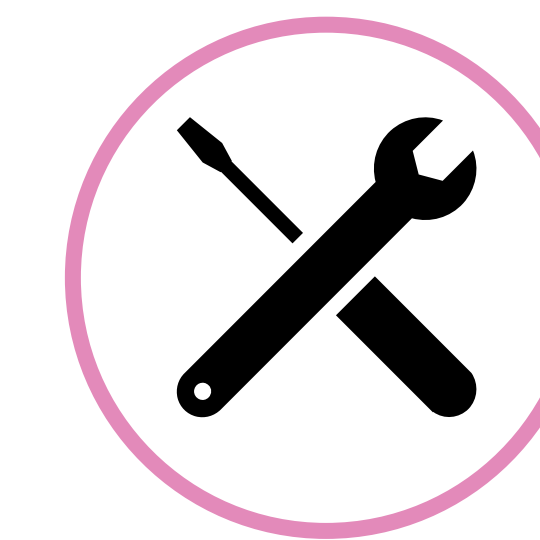
Noise Barriers

Where possible, temporary barriers surround loud equipment to reduce noise.



Advance Notice

Providing notice ahead of construction to give local stakeholders the opportunity to ask questions and plan for the work.



Site Maintenance

Keeping the site clean and tidy to support the positive appearance of the neighbourhood.



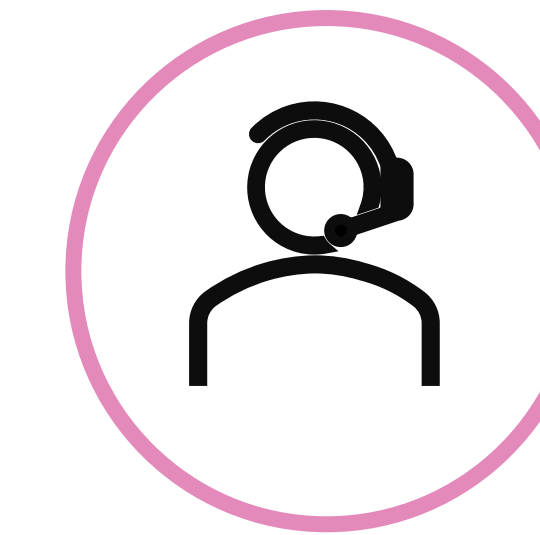
Noise Monitors

Located throughout the rail corridor, these monitors measure noise to make sure proper levels are maintained.



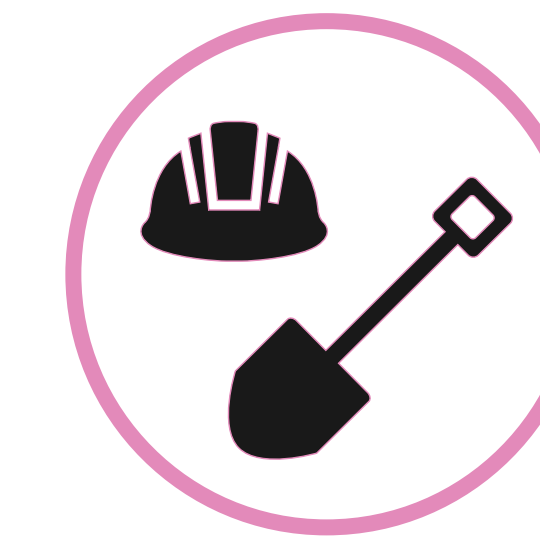
Hoarding and Signage

Hoarding provides a protective barrier between the construction site and the public. Signage informs of ongoing and upcoming work, as well as way-finding.



24-Hour Support

Providing a 24-hour call number to address complaints and issues.



Mindful Work Schedules

Work is scheduled to consider community needs, other major projects, and neighbourhood events.

Don Valley Crossings



- Two large bridges will span the Don Valley, to be used exclusively by Ontario Line trains.
- The first crossing will begin at the Minton Place Portal (starting Summer 2024 - 2028), travelling north parallel to Millwood Road (the Leaside Bridge) before connecting with Overlea Boulevard.
- The second crossing will run along the north side of Overlea Boulevard, beginning just east of Beth Neilson Drive. It will span over the valley and connect with Don Mills Road at Gateway Boulevard. (Flemingdon Park Station).

Station Interior

Platform level within the station, showcasing the centre platform and platform edge doors being implemented for passenger safety. The station will be fully accessible in compliance with the Accessibility for Ontarians with Disabilities Act (AODA).

Station amenities will include:

- Secure bike storage and covered bike parking
- Public plaza/meeting space

Station Exterior

A nighttime image of the station, highlighting how transparency supports wayfinding. The spaces under the elevated guideways will be illuminated for safety.



Design rendering - subject to change



Design rendering - subject to change

20 Overlea Boulevard

Islamic Society of Toronto

The Maintenance and Storage Facility construction requires the relocation of the Islamic Society of Toronto (IST) and other tenants from 2 and 4 Thorncliffe Park Drive.

The IST and other tenants will be relocated into the fully renovated existing building at 20 Overlea Boulevard. That building will accommodate a new Mosque and business hub.



The Ontario Line

Connect 6ix

Connect 6ix is a team made up of Plenary Americas, Hitachi Rail, Webuild, NGE and Transdev.

They have been contracted by Metrolinx and Infrastructure Ontario to design, build and finance key parts of the Ontario Line, as well as to operate and maintain the Ontario Line fully automated subway system for 30 years.

Connect 6ix will:

- Design and build the tracks and the communication, security, safety and automated train control systems.
- Provide state-of-the-art subway trains for driverless operations.
- Operate and maintain the Ontario Line
- Integrate a fare collection system with PRESTO

In addition, Connect 6ix is responsible for constructing an operations, maintenance and storage facility (OMSF) in Thorncliffe Park.



 **METROLINX**

The Ontario Line

Conceptual renderings only. Subject to change.



Other RSSOM responsibilities include:

- Security Operation Office (at Pape Station)
- Communications Systems
- Physical Security Systems (e.g. CCTV, Access Control)
- Passenger Information Systems (e.g. PA, PVIS)
- Platform Screen Doors
- Tunnel Ventilation Control System

The Ontario Line

The OMSF

The operations, maintenance and storage facility (OMSF) will be the central location for Ontario Line train storage and maintenance, and also the site of administration and operations offices.

The facility will be located next to a future station on the route in Thorncliffe Park.

Those working at the OMSF location will oversee operations of the line, signalling and communications maintenance, line security, safety, performance management, and track and train maintenance.

Main building entrance
Work in progress. Subject to change.



The Ontario Line

The Trains

The Ontario Line will feature four-car trains that will be electric and driverless. In operation, the trains will travel up to 80 kilometres per hour.

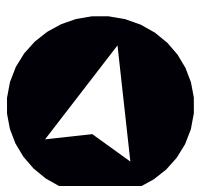
Each four-car train can accommodate 661 passengers. The trains, similar to the vehicles already running on Milan Metro lines 1, 2 and 3, and Rome Metro Line C, will run as frequently as every 90 seconds.

On-board features will include Wi-Fi, double wheelchair areas, charging stations and spots for bicycles.

To create the safest experience possible for Ontario Line riders, each station will include full platform edge screens and doors to prevent transit riders and debris from entering the track area when the train is not in the station.



The Ontario Line



- Elevated
- Station Building
- Maintenance and Storage Facility Boundary
- Bus Stop
- Station Entrance
- Maintenance and Storage Facility Building

Note: Locations of track storage and maintenance buildings are not final.

The Ontario Line

Work in progress. Subject to change.



Main building - dusk
View facing north from hydro corridor.



View from Beth Neilson Drive
View facing south from pedestrian entry gate at Beth Neilson Drive.

The Ontario Line

Progress on Site

40 Beth Neilson Drive



36 Overlea Blvd.

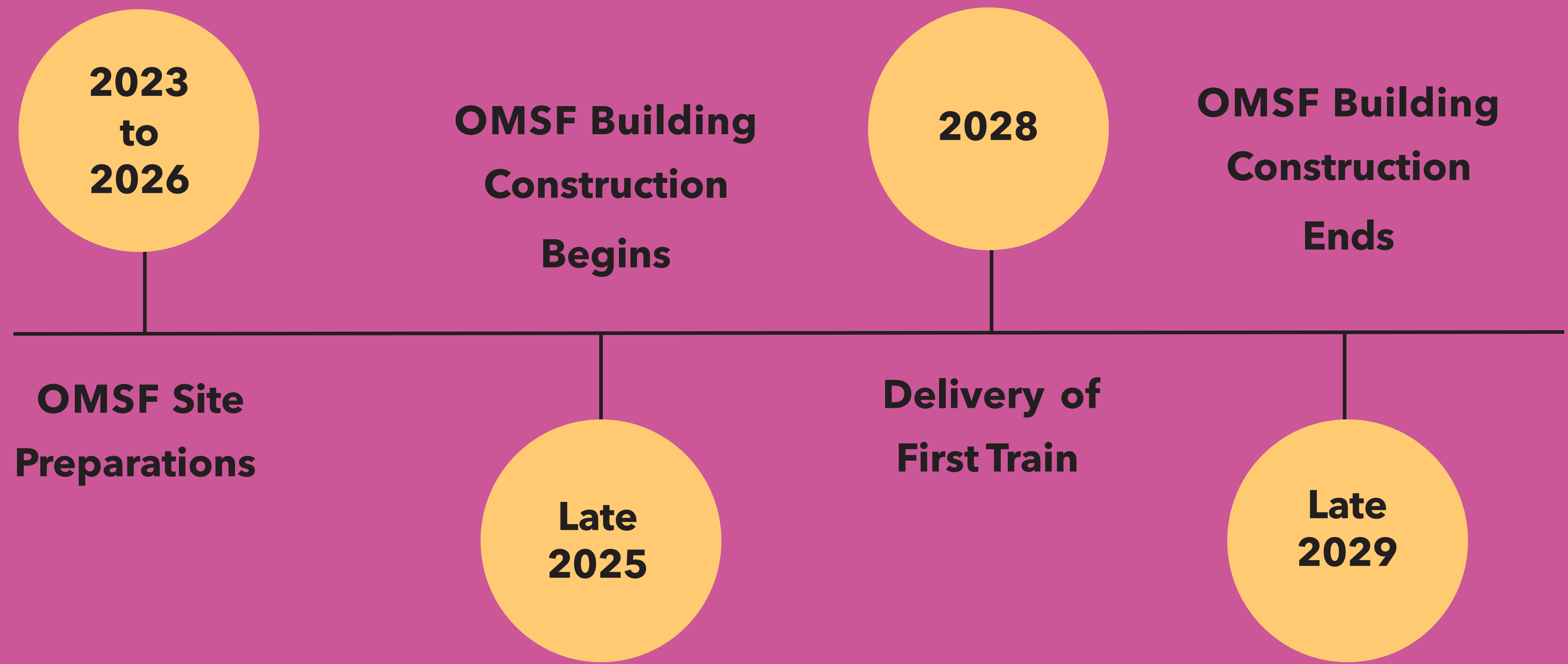


Highlights

- ✓ Demolished 36 Overlea Blvd.
- ✓ Demolished 1 Thorncliffe Park Drive
- ✓ Demolished 40 Beth Neilson Drive
- ✓ 2 Thorncliffe Park Drive prepared for demolition
- ✓ Construction roads built to move traffic off local roads

The Ontario Line

What's Happening When



2024 Construction Look-Ahead

Timing	Activity	Details and Purpose
Spring	Demolition 1 Thorncliffe Park Dr.	Completed in May 2024, to facilitate early works required for the OMSF.
	Demolition 40 Beth Neilson Blvd.	To facilitate construction of the OMSF. Utility disconnection, abatement work and building demolition have been completed.
	Walmsley Brook Culvert Construction	Work began on a new culvert (drainage pipe) underneath the CP tracks. The new culvert requires the construction of a launch and extraction shaft to accommodate a micro-boring machine that will dig out the culvert.
Summer	Demolition Prep 2 Thorncliffe Park Dr.	To facilitate construction of the OMSF. Utility disconnection, abatement work and building demolition will begin at the site.
	Closure of Pat Moore Drive	Pat Moore Drive is now a dead-end and access to and around 2 Thorncliffe Park Drive is closed to prevent unsafe access to the work area near 1 and 2 Thorncliffe Park Dr.



To view this information in other languages, please scan the QR code below.



French



Pashto



Urdu