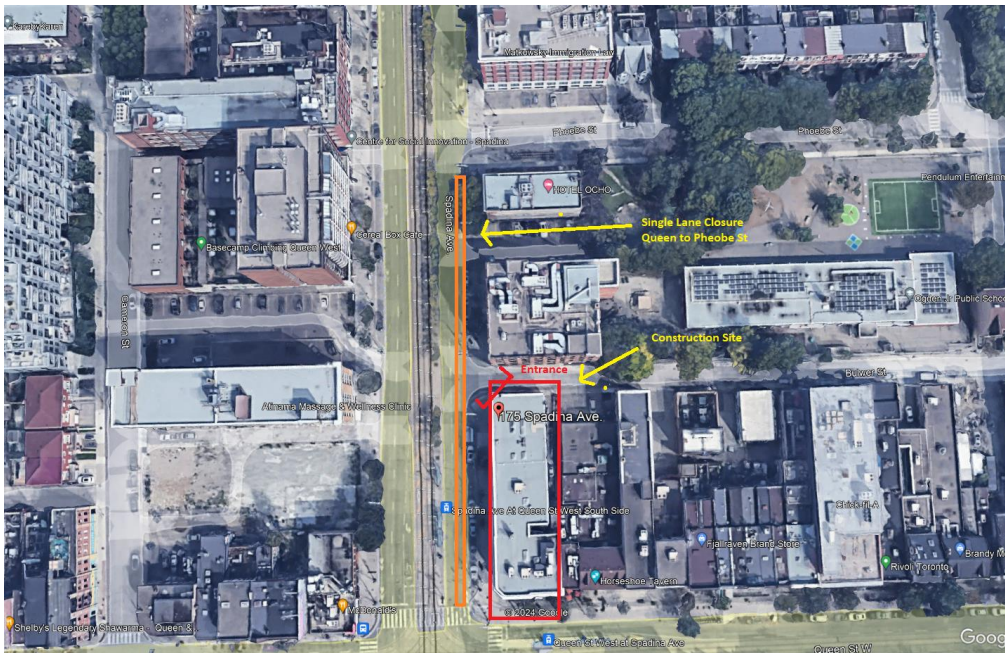


Construction crane delivery at Queen-Spadina Station

Expected start date: September 5, 2024

Hours of work: 5:00 a.m. to 7:30 a.m. and 9:30 a.m. to 3:30 p.m. Work to take place outside traffic rush hours.



What is happening?

As part of the ongoing construction of the Ontario Line and the future Queen-Spadina station, crews will install a crane on the north side of Queen-Spadina, which is needed to help support the excavation of the site.

A flatbed truck will deliver the components to Queen-Spadina on September 5, 2024, to install the crane.

The crane will be assembled on-site within the station construction site. However, the delivery requires traffic control persons and a paid duty officer to guide a flatbed truck to the site, and temporarily occupy the northbound lane of Spadina Avenue, while maintaining safe operations and passage for vehicles and pedestrians onto Bulwer Street. **For your safety, please follow the instructions of traffic control persons in the area of Bulwer and Spadina.**

The flatbed truck will unload materials for the crane assembly, starting in the early morning of Thursday, September 5. Crews will take steps to minimize noise impacts wherever possible. Following the morning rush-hour additional materials will be delivered to the site and completed by the afternoon rush hour.

What to expect

- A crane will be delivered to the north station site, at Queen-Spadina. The crane delivery will require a short-term closure of the northbound lane of Spadina Ave., while the equipment is being delivered to the worksite. Assembly of the crane will be done entirely within the station site.
- Paid duty officers who will guide pedestrians and cyclists safely.
- Work may be postponed or rescheduled due to unforeseen circumstances.
- All necessary construction permits have been obtained.
- For more information about upcoming station work please see [metrolinx.com/Ontarioline](https://www.metrolinx.com/Ontarioline) or sign up for the e-newsletter.

About the Ontario Line

- 15.6-kilometre subway line that will make it faster and easier to travel within Toronto and beyond.
- 15 stops and more than 40 connections to other transit, including GO train, subway, LRT, streetcar, and bus lines.
- Less than 30 minutes from one end of the line to the other.
- 28,000 fewer cars on the road each day.

Contact us:

Call us 24/7 at: [416-202-5100](tel:416-202-5100)

Write to us at: ontarioline@metrolinx.com

Find us on X, Facebook, and Instagram:

[@ontarioline](#)

Visit the website:

www.metrolinx.com/ontarioline

Visit our community offices:

770 Queen Street East (near Queen & Broadview)

General hours:

Mondays, Tuesdays, and Fridays: 9:00 a.m. to 5:00 p.m.

Wednesdays and Thursdays: 10:00 a.m. to 6:00 p.m.

Thornccliffe Park:

East York Town Centre
45 Overlea Blvd., Toronto, ON M4H 1C3
Unit 153 (across from the Rogers store)

General hours:

Monday – Friday, 9 a.m. – 5 p.m.