

**Ontario Line**

# Queen - Spadina

Construction Liaison Committee

September 3, 2024



# Agenda

## Welcome

- Introduction
- Land Acknowledgment
- Safety Moment

## Presentation

- Construction Update
- Upcoming Work

## Q/A and Discussion

- Community Artwork Program
- Community Engagement
- Contact Us





# Land Acknowledgment

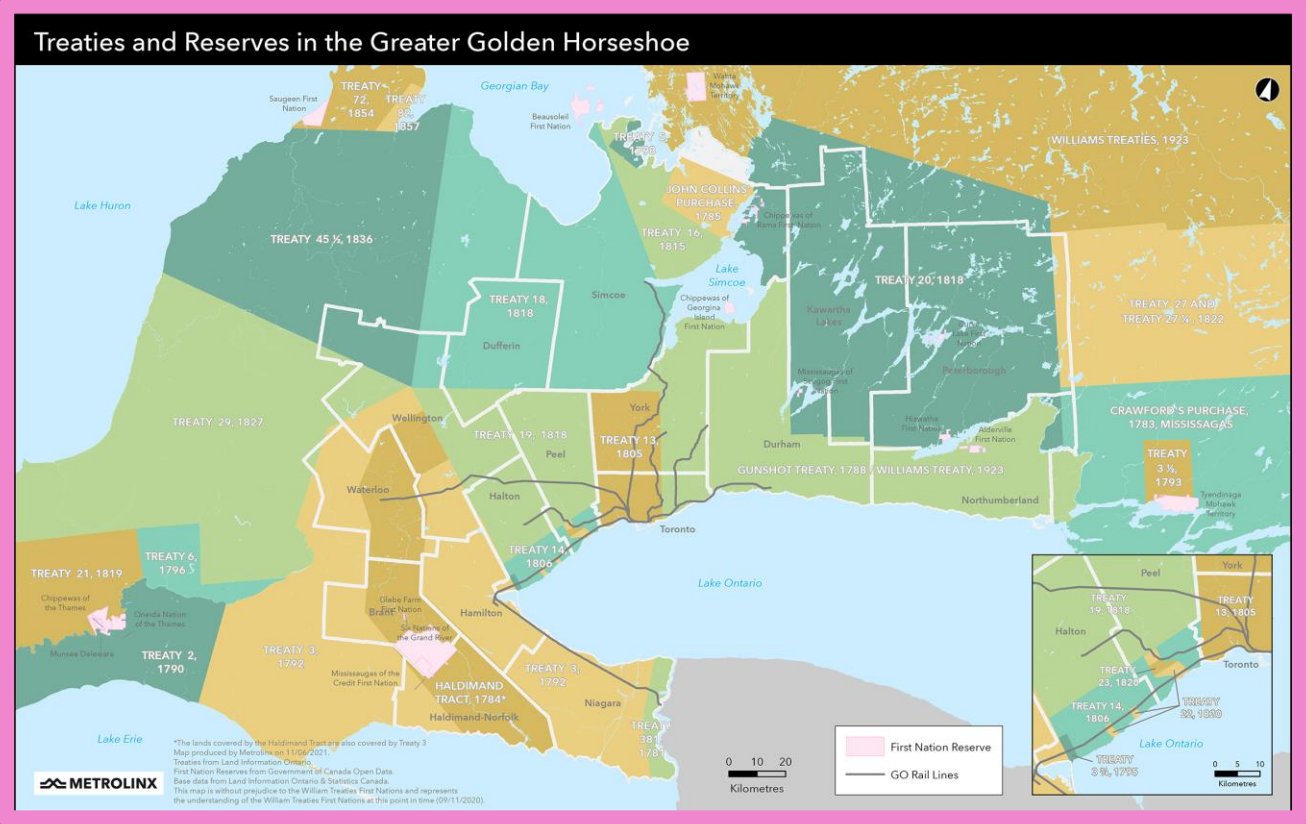
Let us take a moment to acknowledge we are on lands that have been, and continue to be, home to many Indigenous Peoples including the Anishnabeg, the Haudenosaunee and the Huron-Wendat peoples.

We are all Treaty people. Many of us have come here as settlers, as immigrants or involuntarily as part of the trans-Atlantic slave trade, in this generation, or generations past.

We acknowledge the historic and continued impacts of colonization and the need to work towards meaningful reconciliation with the original caretakers of this land.

We acknowledge that Metrolinx operates on territories and lands covered by many treaties that affirm and value the rights of Indigenous communities, Nations and Peoples.

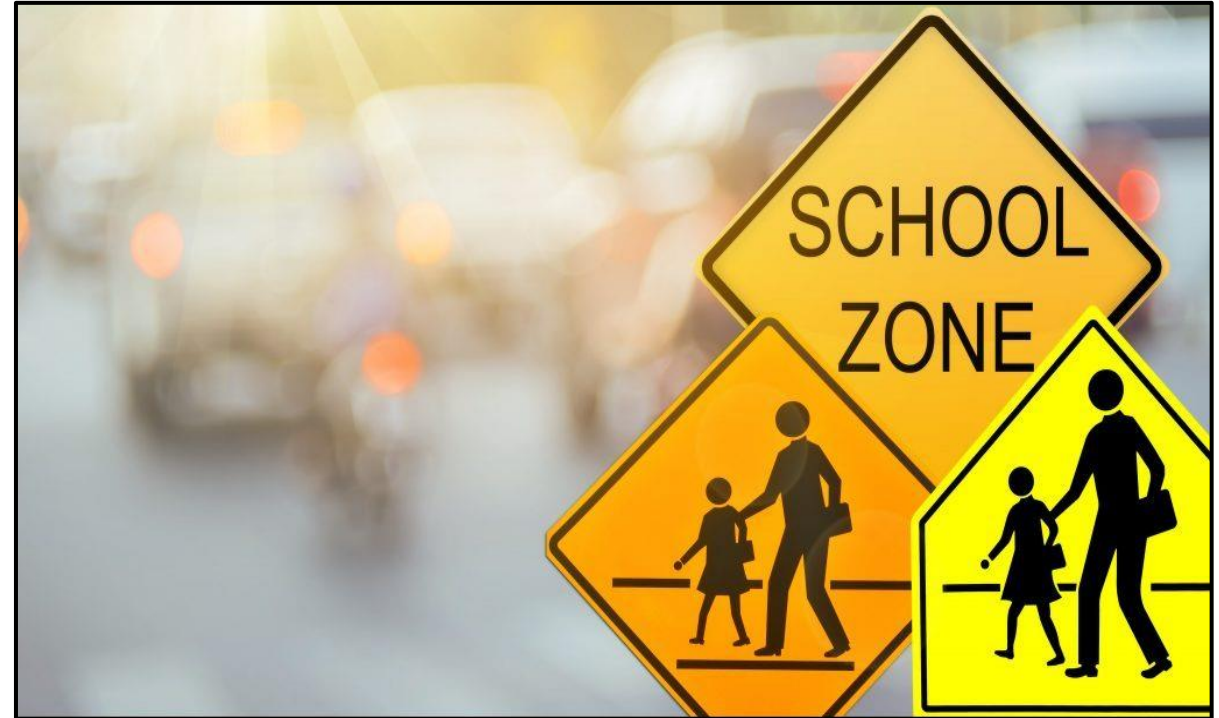
We understand the importance of working towards reconciliation with the original caretakers of this land. At Metrolinx, we will conduct business in a manner that is built on a foundation of trust, respect and collaboration.



# Safety Moment

## Back-to-School Safety Near Construction Zones

1. **Watch for Construction Vehicles:** Be aware of increased activity near construction zones, especially during school drop-off and pick-up times. Large vehicles may have blind spots, so maintain a safe distance.
2. **Obey Traffic Signs and Signals:** Follow all posted signs and signals in and around construction zones, especially in school zones. Reduced speed limits and temporary detours are in place to keep everyone safe.
3. **Use Designated Crosswalks:** Teach children to use designated crosswalks and avoid shortcuts through construction areas. Construction sites can have hidden hazards.
4. **Stay Alert:** Avoid distractions like phones while driving or walking near construction sites. Be especially cautious around areas where children are present.
5. **Plan Your Route:** Allow extra time for your commute and consider alternate routes to avoid construction zones during peak school hours.



## PREVIOUS AUGUST CLC ACTION ITEMS

ACTION ITEM	STATUS UPDATE
<ul style="list-style-type: none"><li>• A resident has raised concern about dust entering their condo unit.</li><li>• Metrolinx to speak with the resident to discuss dust mitigation measures.</li></ul>	<ul style="list-style-type: none"><li>• Metrolinx has spoken with the resident member and will monitor the concern.</li></ul>
<ul style="list-style-type: none"><li>• A resident raised concerns about air quality in the area. Metrolinx to speak with the resident directly to address concerns.</li></ul>	<ul style="list-style-type: none"><li>• Metrolinx will follow up with the resident to gather more information.</li></ul>

# Construction Updates

**Ontario Transit Group (OTG)**



## UPDATE ON CURRENT WORKS - FUTURE NORTH STATION

- Excavation is underway at the north station site and is expected to be complete in December 2024.
- Current excavation work includes the installation of supports and brackets to enhance site stability and safety.
- Current work hours for excavation are:
  - 7 a.m. to 11 p.m., Monday to Friday
  - 7 a.m. to 5 p.m. Saturdays

*\*Note: additional hours of work/changes to the schedule may occur*



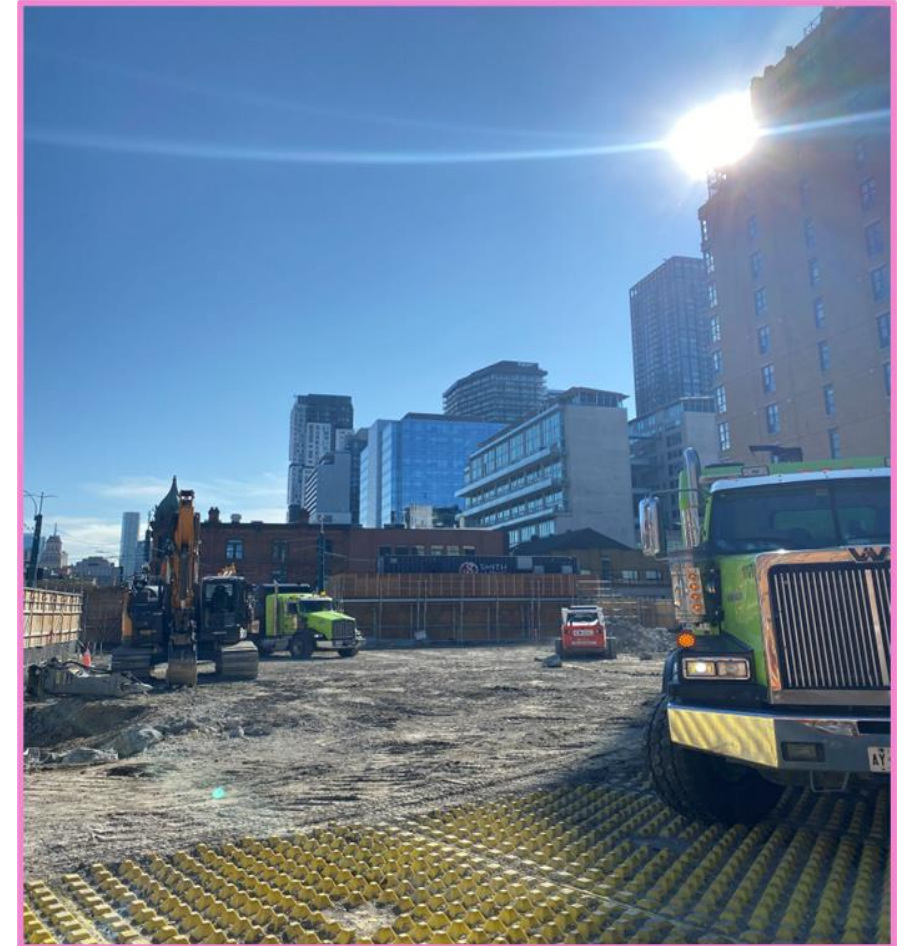
View of ongoing excavation work at the future north station site in late August 2024.

## UPDATE ON CURRENT WORKS - FUTURE SOUTH STATION

- Piling is complete at the south station site.
- Crews are excavating and breaking concrete to prepare to install capping beams to support the future excavation of the station site.
- Expected hours of work:
  - Weekdays from 7:00 a.m. to 11:00 p.m.\* and Saturday 7:00 a.m. to 5:00 p.m.
  - This work is expected to continue to the fall 2025.

*\*The contractor may not always work extended or weekend hours.*

*Occasional overnight shifts may be required to keep work on schedule.  
Notice will be provided to the community in advance.*



*View of the future south station late August 2024.*



## UPDATE ON CURRENT WORKS - FUTURE SOUTH STATION

- A power substation has been installed on Spadina Avenue, above the covered pedestrian walkway.
- The power substation will provide power to the construction site, reducing the need for generators on-site to power equipment.
- Toronto Hydro is expected to add electricity to the substation later this fall.



Installation of the power substation on the overhead platform

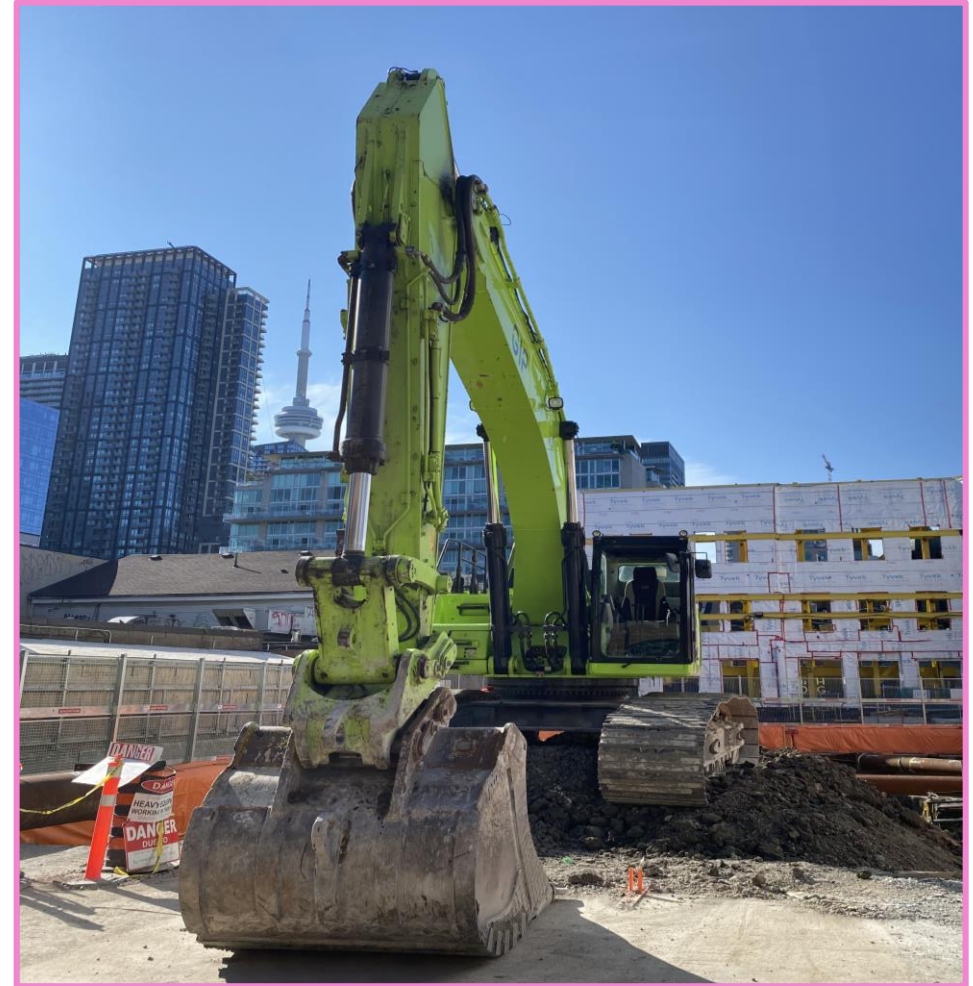


View of the substation power installed

## WHAT TO EXPECT DURING EXCAVATION

During excavation work, community members can expect:

- Work hours from 7:00 a.m. to 11:00 p.m. Some noise from excavating equipment, loading of excavated material at both north and south sites.
- Equipment used during this operation includes cranes, excavators, dump trucks, concrete pumps, and steel beam delivery trucks.
- Several trucks entering and leaving worksites daily, following a specified route.





## REDUCING IMPACTS DURING EXCAVATION

- Air quality monitoring to track dust debris and vehicle emissions to ensure that construction activities don't impact the quality of the environment.
- Site hoarding where possible to help reduce noise.
- Street sweepers and wheel cleaning as needed to ensure soil and sediment is kept off city streets and sidewalks.
- Expanded paving of frequently used areas, where possible, to minimize the amount of loose soil that can be disturbed by vehicle traffic.
- Use of mud mats reducing the amount of mud created with more frequent passage.
- Regularly wetting exposed soil and debris, preventing dust particles from becoming airborne.



*Example Noise microphone monitoring device*



*Mud mat in place to reduce dust*



*Water spray machine to reduce dust*



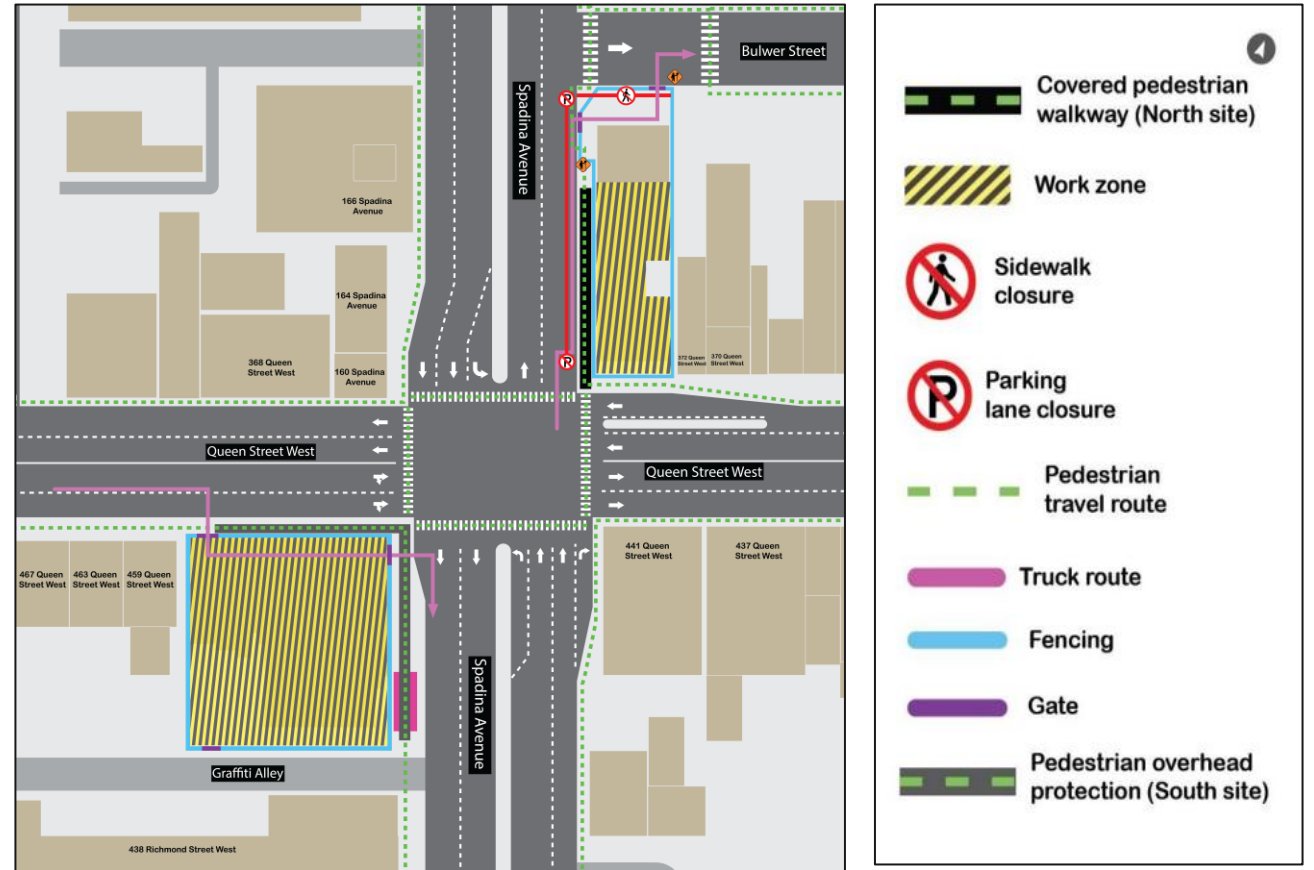
# Access Points

## North Site

- Trucks will enter via Queen Street West and Spadina Avenue northbound and exit through the gate on Bulwer Street as of early October.
- The parking lane along the Spadina Avenue will remain closed.
- The south sidewalk along the work zone, from Spadina Avenue along Bulwer Street will remain closed to ensure pedestrian safety access.

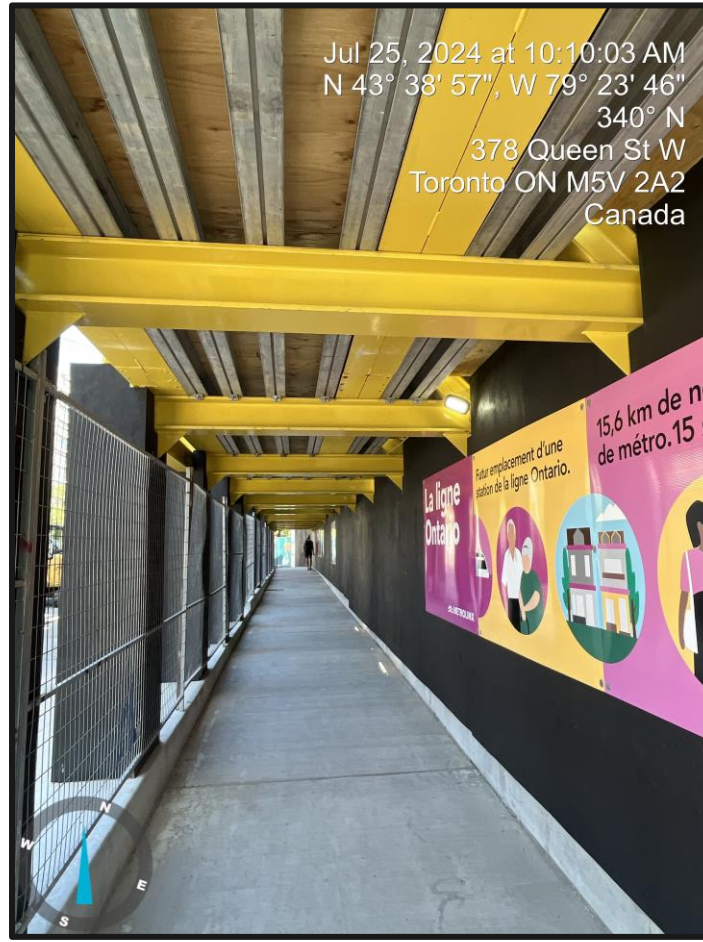
## South Site

- Trucks will enter via Queen Street West.
- This remains the primary entrance and exit while gates are installed.
- In the future, trucks will exit via one of two routes: through the gate at the northeast side of the work zone on Spadina Avenue or through the gate at the south end of the work zone onto Graffiti Alley and then out to Spadina Avenue, travelling south.



Site access points for current phase of work

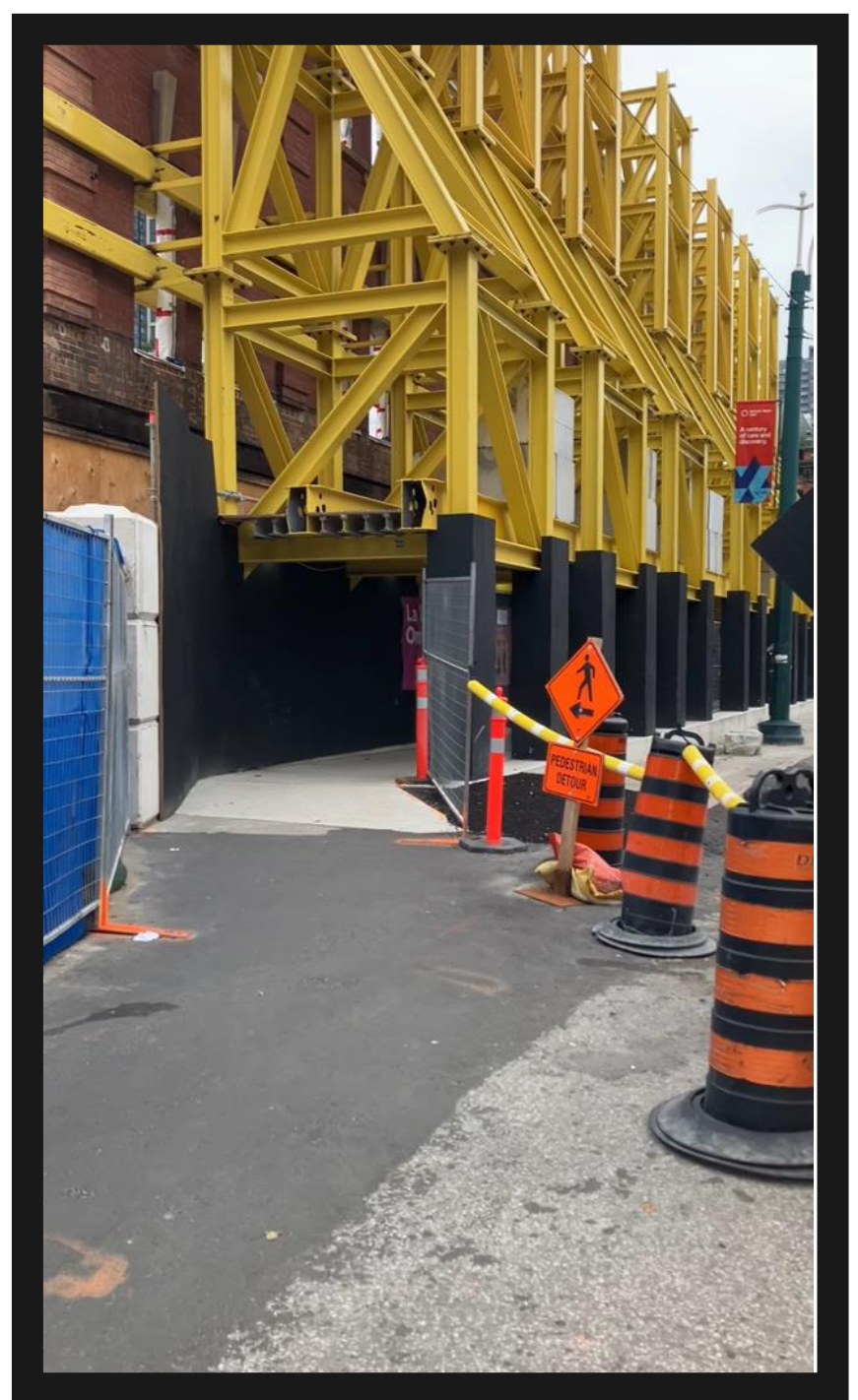
## Pedestrian Access in the future North entrance



**Pedestrian access along Spadina Avenue for current phase of work.**



# Video content of the pedestrian pathway along Spadina Avenue North Site





# Upcoming construction work

## 2024 CONSTRUCTION LOOK-AHEAD\*

Queen-Spadina			
Time	Activity	Location	Details & Purpose
Summer/Fall	Signage Installation - Phase 1	South station entrance	<ul style="list-style-type: none"> <li>Installation of Phase 1 Metrolinx signage along Queen Street West</li> </ul>
Fall/Winter	Monitoring	North and South entrance	<ul style="list-style-type: none"> <li>Monitoring Excavation Activities in place to ensure everything is progressing safely, inside and along sites.</li> </ul>
Late Summer/Fall 2024 to 2025	Excavation In soil and rock	North station entrance  South station entrance	<ul style="list-style-type: none"> <li>Excavation of shafts to the station level, to provide connection with future station platforms</li> <li>Capping beam and temporary steel deck in South Shaft</li> </ul>

*\*\*dates subject to change based on unforeseen circumstances*

# Community Art Work



# Community Artwork

## Program timelines

Timing	Activity	Details & Purpose
July - August 2024	<b>Capturing Community Feedback</b>	Survey to capture public feedback; survey promoted via on-the-ground marketing and CLC engagement. Survey responses being reviewed in real-time to start to identify potential partners and direction for artwork.
October 2024	<b>Analysis and Reporting</b>	Analysis of results by area and reporting; feedback to be shared with CLC groups in October 2024 to inform what we heard and share direction forward.
October - December 2024	<b>Development and delivery of art</b>	Work with artists / partners to develop and delivery artwork; timelines will vary by site and may change depending on the complexity and medium of artwork selected. Additional information on intended timelines to be shared with communities upon finalization of partners.

# Discussion

# Community Engagement

# Community Engagement

## Staying connected during construction

### Construction notices and updates

- Prepared and distributed before new/impactful construction work
- Please contact us at [ontarioline@metrolinx.com](mailto:ontarioline@metrolinx.com) to be added to our email distribution list for the latest construction updates
- Check out the Ontario Line Subway interactive map at <https://caportal.ca/metrolinx/ontario-line>

### Monthly CLC meetings

- Regular committee meetings to discuss upcoming works and share information
- Our next CLC will take place on October 1, 2024

### In-person and virtual consultation with residences and businesses

- We want to hear from you! Please share your feedback or concerns with us

### Get the Ontario Line Subway Newsletter sent right to your inbox



# Community Engagement

We are here for you

**Metrolinx will keep the community, residents, and businesses informed by providing project updates, seeking input and feedback, and effectively and quickly addressing questions and concerns.**

## Connect with us:

Bradley Naismith, Advisor, Community Engagement

Email [OntarioLine@metrolinx.com](mailto:OntarioLine@metrolinx.com)

Telephone 24/7 @ 416-202-5100

Ontario Line e-newsletter @ [Metrolinx.com/OntarioLine](https://Metrolinx.com/OntarioLine)

## Follow us on social media:

X / Facebook / Instagram @OntarioLine



Paste the QR Code of Metrolinx  
e-newsletter subscription

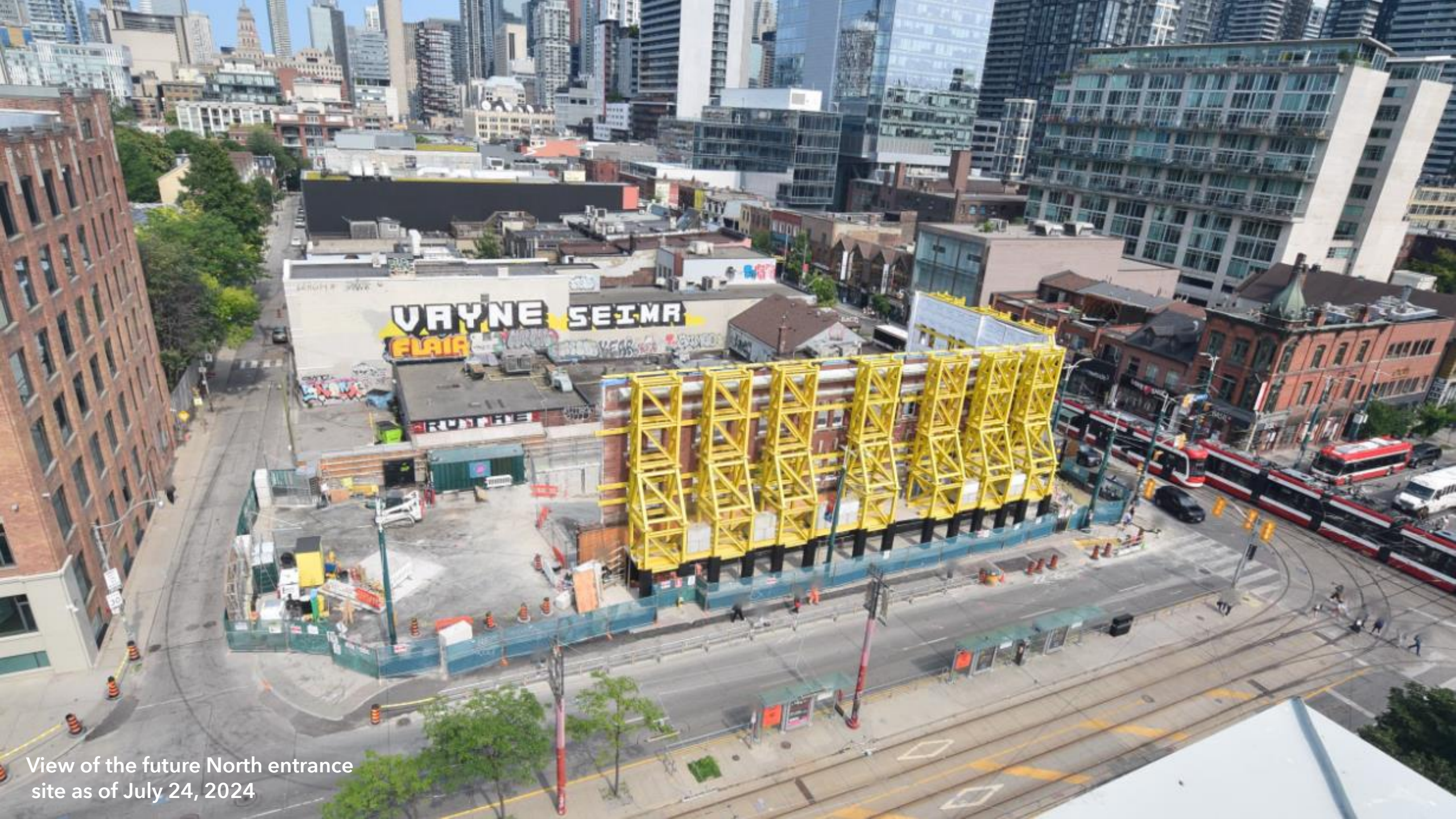


# Appendix





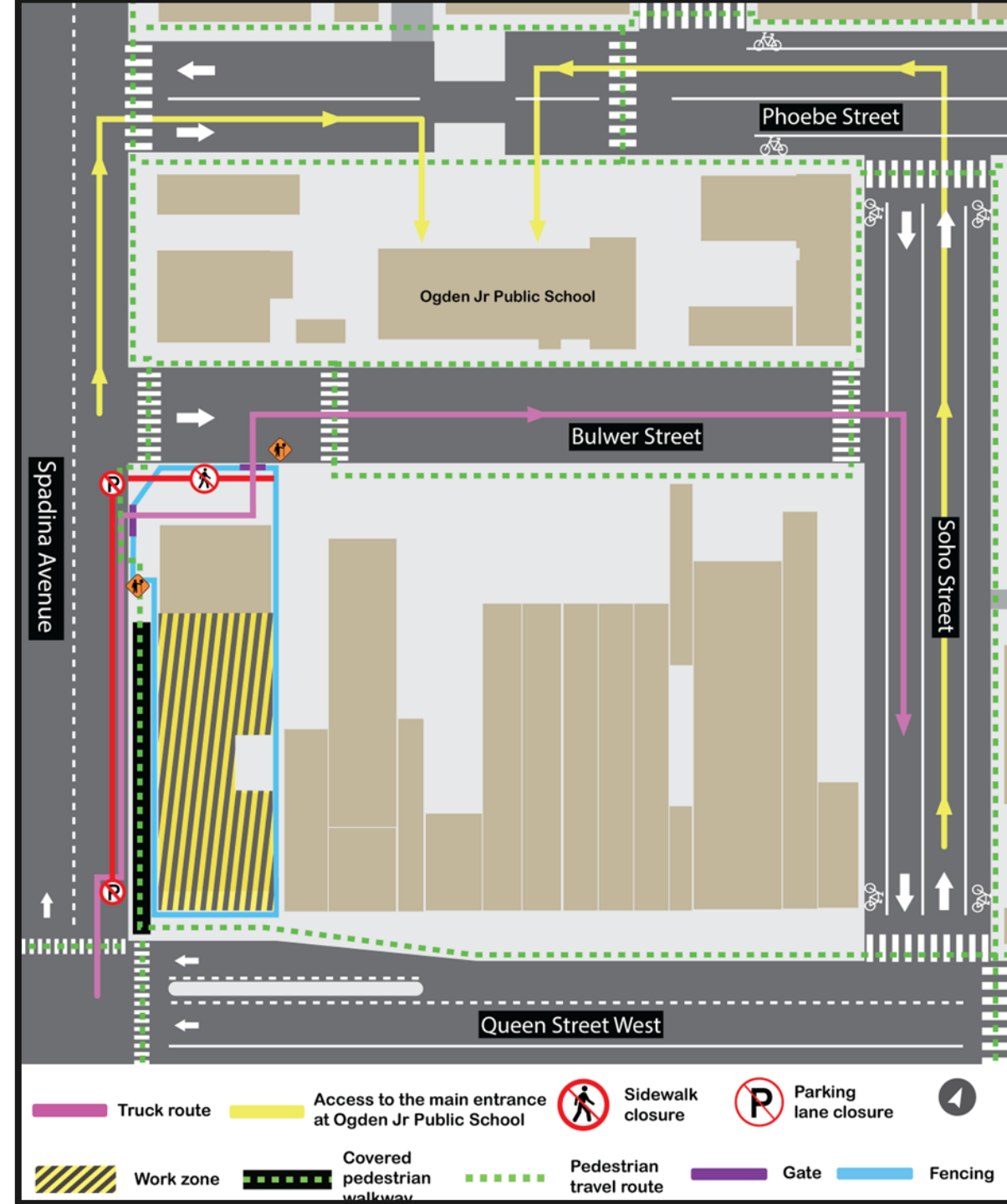


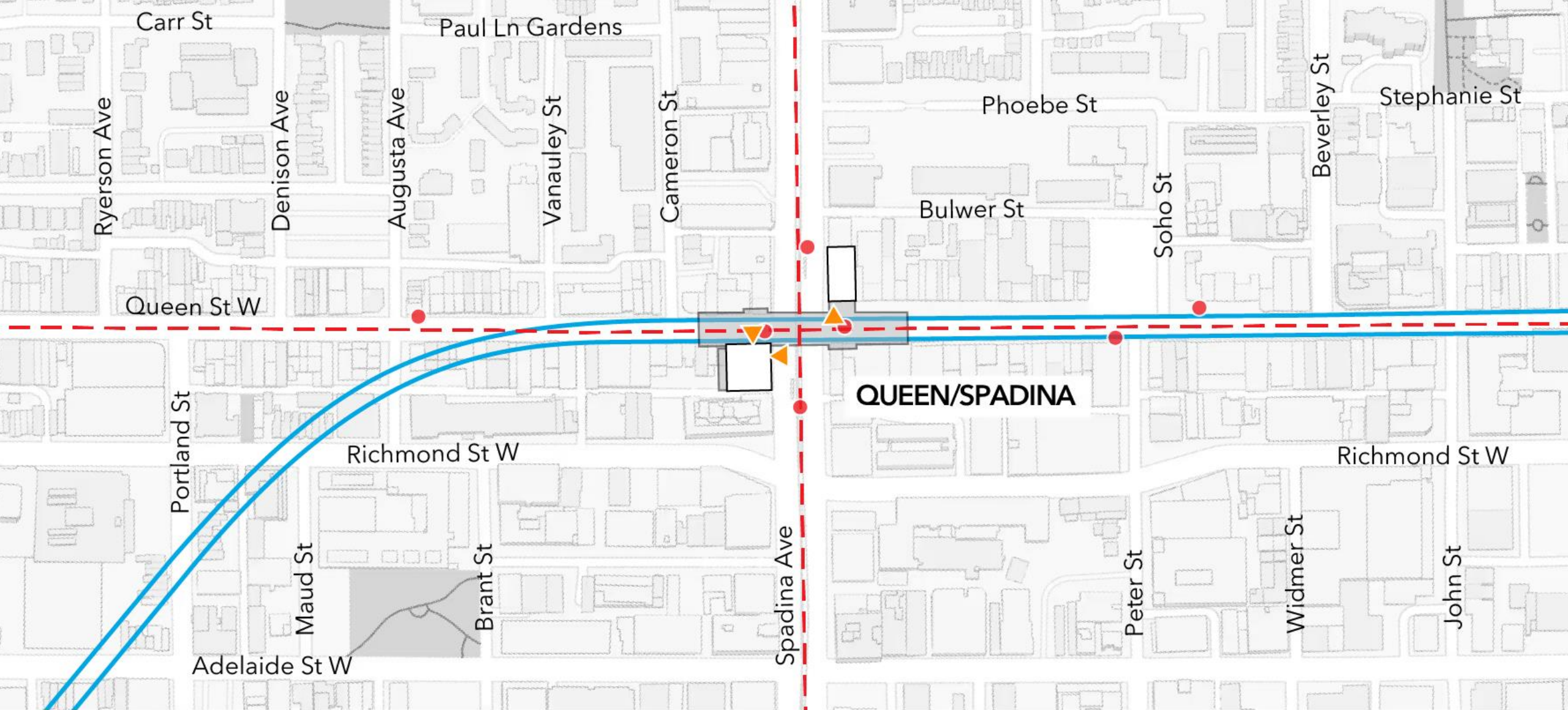


View of the future North entrance site as of July 24, 2024



Access to Ogden Junior Public School is not impacted by construction



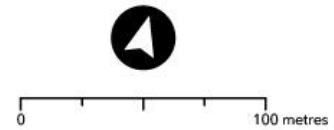


**QUEEN/SPADINA**

## Queen/Spadina Station

- Tunnelled
- - - Streetcar Line
- Streetcar Stop
- ▲ Station Entrance
- Station Building
- Underground Station Area

**Note:** Heritage attributes will be conserved where possible.







Artist's rendering – subject to change. Transit-Oriented Community proposals not shown.





Artist's rendering – subject to change. Transit-Oriented Community proposals not shown.