

Ontario Line

King-Bathurst Station

Construction Liaison Committee

September 5, 2024



Agenda

Welcome

- Introductions
- Land Acknowledgment
- Safety Moment
- Station Overview
- Action Items

Presentation

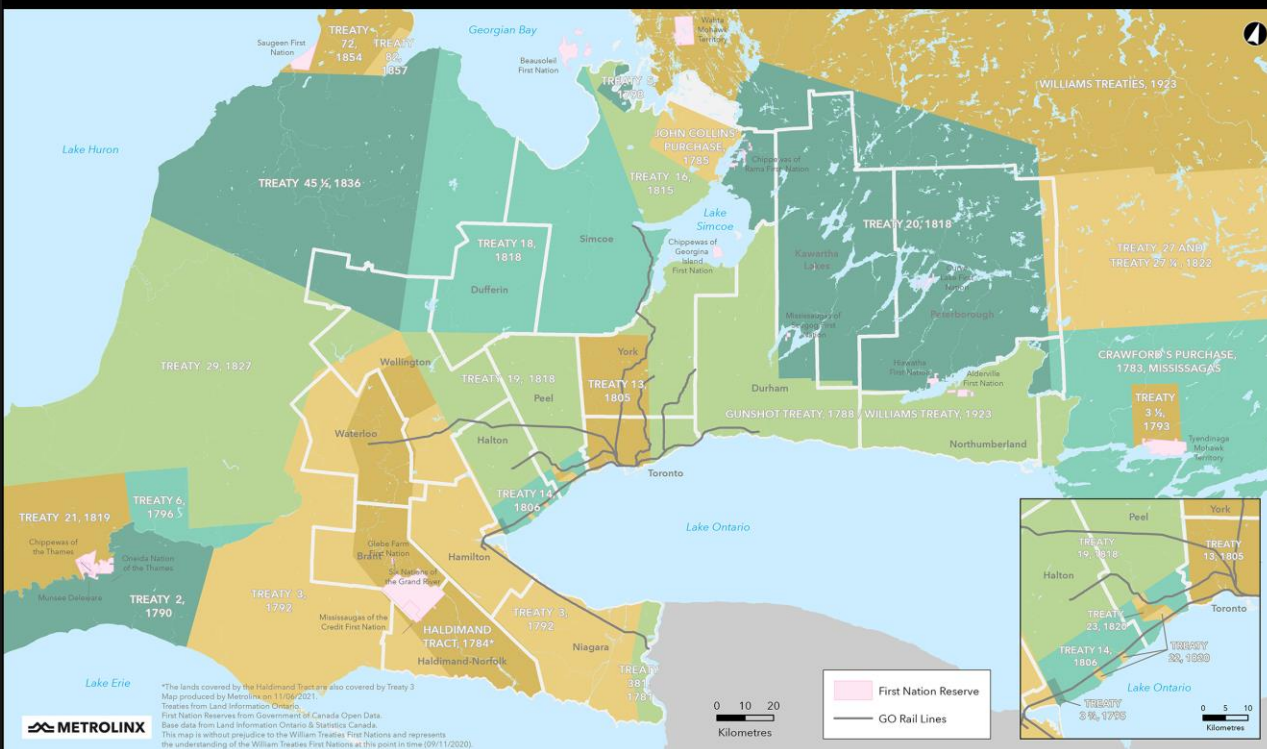
- Construction Updates
- Upcoming Work
- We Are Here For You

Feedback and Discussion (30 Minutes)



Land Acknowledgment

Treaties and Reserves in the Greater Golden Horseshoe



Let us take a moment to acknowledge we are on lands that have been, and continue to be, home to many Indigenous Peoples including the Anishnabeg, the Haudenosaunee and the Huron-Wendat peoples.

We are all Treaty people. Many of us have come here as settlers, as immigrants or involuntarily as part of the trans-Atlantic slave trade, in this generation, or generations past.

We acknowledge the historic and continued impacts of colonization and the need to work towards meaningful reconciliation with the original caretakers of this land.

We acknowledge that Metrolinx operates on territories and lands covered by many treaties that affirm and value the rights of Indigenous communities, Nations and Peoples.

We understand the importance of working towards reconciliation with the original caretakers of this land. At Metrolinx, we will conduct business in a manner that is built on a foundation of trust, respect and collaboration.

SAFETY MOMENT - BACK TO SCHOOL

Let's all do our part to ensure everyone stays safe during the busy back-to-school season, especially in areas near ongoing construction.

- 1. Watch for Construction Vehicles:** Be aware of activity near construction zones, especially during school drop-off and pick-up times. Large vehicles may have blind spots, so maintain a safe distance.
- 2. Obey Traffic Signs and Signals:** Follow all posted signs and signals in and around construction zones, especially in school zones. Reduced speed limits and temporary detours are in place to keep everyone safe
- 3. Use Designated Crosswalks:** Teach children to use designated crosswalks and avoid shortcuts through construction areas. Construction sites can have hidden hazards.
- 4. Stay Alert:** Avoid distractions like phones while driving or walking near construction sites. Be especially cautious around areas where children are present.
- 5. Plan Your Route:** Allow extra time for your commute and consider alternate routes to avoid construction zones during peak school hours.



CLC ACTION ITEMS - AUGUST 2024

#	ACTION ITEM	RESPONSE	STATUS
1	OTG to review street sweeper route to ensure the construction affected neighbourhood is being regularly cleaned.	<p>Street sweeper trucks are in constant circulation of the affected areas along King Street West, Stewart Street, Bathurst Street, and other peripheral streets where trucking occurs.</p> <p>This is a constant cleaning effort to keep city street debris-free.</p>	Closed
2	OTG to assist with One Hotel valet and truck queuing area.	OTG is examining means to queue trucks further south on Bathurst (if possible), to try and alleviate sharing the same curb side area as One Hotel, on Bathurst Street northbound.	In Progress

Ontario Line

King-Bathurst Construction Updates

KING-BATHURST STATION CONSTRUCTION LOOK-AHEAD (SUBJECT TO CHANGE)

Major construction milestones to propel the Ontario Line subway forward, at King-Bathurst.

Time	Activity	Details & Purpose
Late Summer	Acoustic shelter installation	A large external covering structure is being installed over the north excavation site, to protect from noise and dust and to allow work to progress around the clock.
	Crane installation	At the north site, a mobile crane will be installed inside the acoustic shelter, as it is erected. At the south site, a tower crane is being installed to support excavation.
	Capping beams	Preparation and installation of capping beams, to complete the piling process, is underway.
Fall	Excavation	Excavation will commence at both sites towards into early fall. This excavation will allow the station cavern to connect the station shaft and the tunnels. Soils and rock will be excavated to create shafts from the street level to the station level, approximately 40m underground.

COMPLETED WORKS: PILE DRILLING TO SUPPORT EXCAVATION

- Pile drilling to enable upcoming station excavation at King-Bathurst is now complete.
- Different piles have been installed at both sites, supporting excavation, Transit-Oriented Community (TOC), as well as the acoustic shelter.
- **Why was is this process needed?** Piles act as foundations for excavation work, and support structural systems, ensuring stability for infrastructures and buildings during the construction of stations, until the permanent concrete structures are completed.
- **On the north site:**
 - 100% of the support of excavation piles have been installed.
 - 100% of the TOC piles have been installed
 - 100% of the acoustic shelter piles have been installed.
- **On the south site:**
 - 100% of the support of excavation piles have been installed.
 - 100% of TOC piles are in progress as of early August.



Pile drilling machine being disassembled and removed from King-Bathurst (south).

COMPLETED WORKS: CAPPING BEAMS

- As piling works have now completed, the next phase of support of excavation involves installation of capping beams.
- **How does it work?** Crews will connect the exposed king piles with horizontal rebar, creating a trench above the piles to be filled with concrete.
- **Why are capping beams needed?** Capping allows for even weight distribution at the excavation shaft.
- By capping the piles, the structural supports stay securely in place, and upcoming excavation efforts are reinforced both vertically and horizontally.



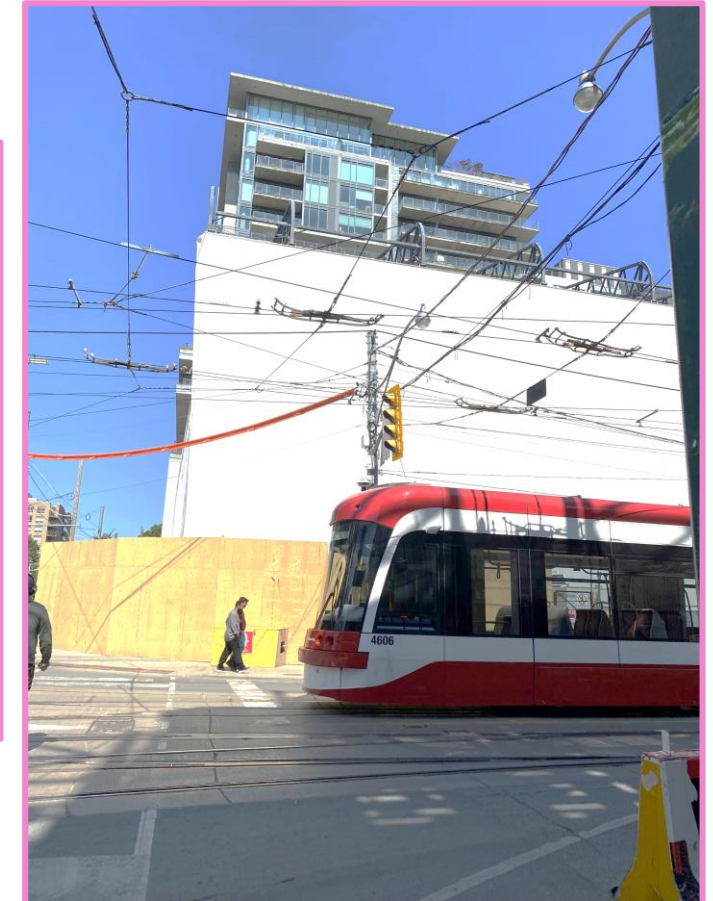
Crews prepare to install capping beams on piles, by connect horizontal rebar to the king piles.

ONGOING WORKS: NORTH SITE ACOUSTIC SHELTER INSTALLATION

- At the north site, an acoustic shelter is being constructed, including ventilation and lighting installation.
- An exterior canvas has been added as weather protection, with acoustic panels being installed on the interior.
- **Why is this shelter needed?** Acoustic shelters are large, steel frame supported site covers, acting as protection from the elements for excavation work, a noise barrier for machinery, and to prevent excess dust and dirt from entering the community.



Assembly of the acoustic shelter structure.



Current installation works of the acoustic shelter exterior canvas.

ONGOING WORKS: OVERHEAD CRANE INSTALLATION

- Within the acoustic shelter, an overhead crane will be installed once the shelter canvas is complete.
- This work will be completed by mid-to-late September, allowing excavation to begin within the shelter.
- **Why is this crane needed?** The overhead crane will help support excavation, as it lifts and lowers equipment and materials in the excavated shaft, and on site.
- This type of crane can move back and forth across the construction site, connected to rails above the excavation shaft.



Example of an overhead crane; a mobile crane to help hoisting operations within the long-term acoustic shelter.

ONGOING WORKS: SOUTH SITE CRANE INSTALLATION

- On the south site, a tower crane is being installed.
- This type of crane is affixed to a permanent base, allowing the crane arm to move back and forth across the construction site, loading materials and delivering them to precise locations; in this case, above the future excavation shaft.
- **Why is this crane needed?**
The overhead crane will lift equipment and hoist up the excavated material during the shaft and tunnel excavation.



Example of a completed tower crane.



Tower crane base being installed at King-Bathurst (south).

ONGOING WORKS: LONG-TERM SIGNAGE & HOARDING INSTALLATION

- Long-term plywood hoarding and Metrolinx branded signage has been installed at the south site of King-Bathurst.
- This space is now painted black and adorned in Metrolinx branded messaging, and will also soon feature community art.
- This work ensures ensure a safe, clean and esthetically pleasing construction site for the community.
- Hoarding also helps mitigate dust, debris and noise from the construction sites.
- As a next step, hoarding and artwork will be applied to the north site, in the coming months.



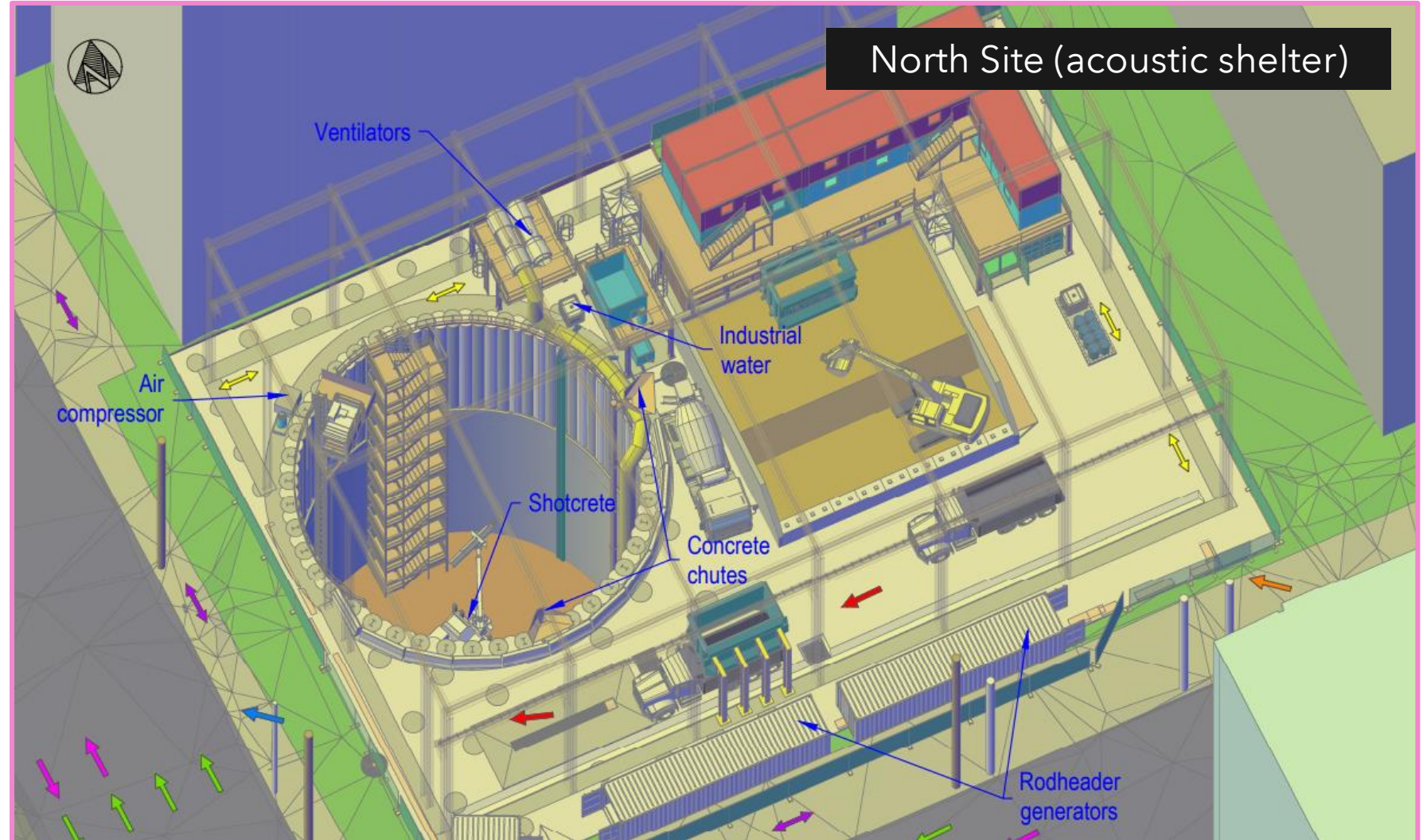
Concept artwork for King-Bathurst sites.



Hoarding installation at the south site.

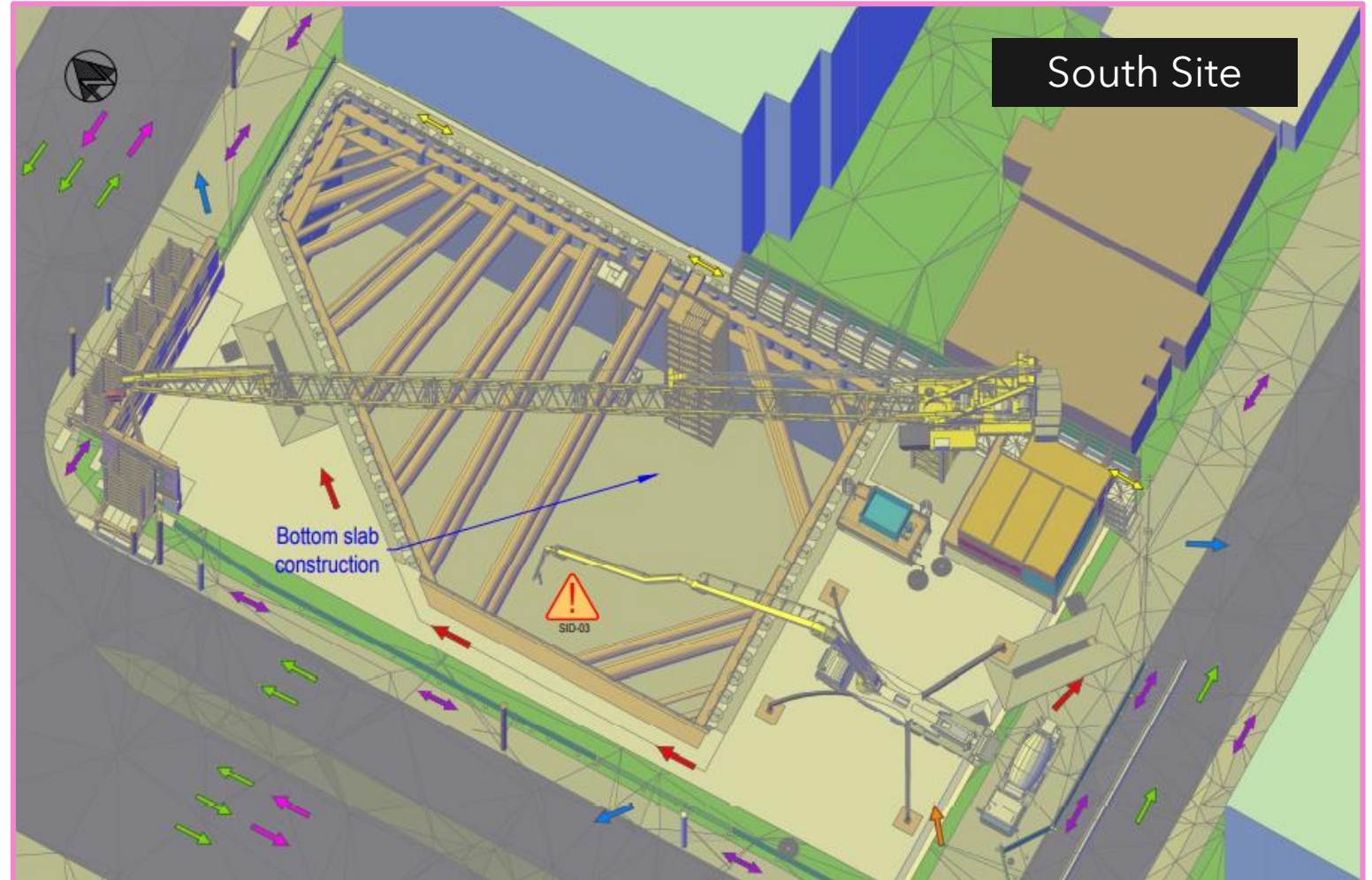
UPCOMING WORKS: NORTH SITE EXCAVATION

- As of this month, excavation will commence on the north site inside the acoustic shelter, with crews working around the clock, 24/7.
- The mobile crane will assist in moving materials as the shaft created to reach the future subway platform level.
- The acoustic shelter will reduce sound



UPCOMING WORKS: SOUTH SITE EXCAVATION

- As of this month, excavation will commence on the south site, from 7:00 a.m. to 7:00 p.m.
- The newly-assembled tower crane will assist in moving materials as the shaft created to reach the future subway platform level.



REMINDER - TRUCKING AND TRAFFIC ROUTES DURING EXCAVATION (SUBJECT TO CHANGE)

During excavation work, community members can expect:

- Trucks entering and leaving worksites daily, following a specified route. Traffic safety support will be provided by designated flag persons as needed.
- Trucks will use fixed routes to access both sites, moving north on Bathurst Street to enter the area, and exiting via Adelaide Street or Stewart Street toward Spadina Avenue, and the Gardiner Expressway.



Ontario Line

Reducing Impacts to the Community

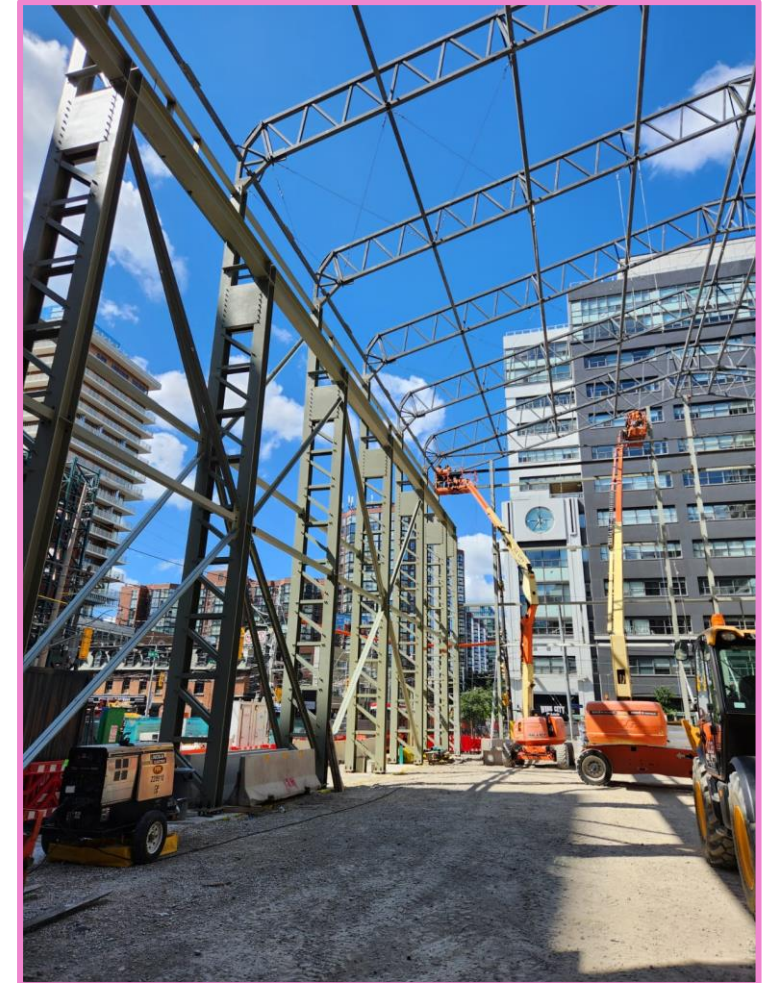
WHAT TO EXPECT WITH EXCAVATION AND EQUIPMENT

During excavation work, the community can expect:

- Noise from excavation equipment, loading of excavated material on to trucks.
- Equipment used during this operation includes cranes, excavators, dump trucks concrete pumps, and steel beam delivery trucks
- Several trucks entering and leaving worksites daily, following a specified route. Trucks will use defined routes, and workers on site will work within dedicated timeframes for excavation activities.



Accordion safety gates to allow trucks to enter and exit sites, protecting pedestrian safety.



Interior of the acoustic shelter being constructed. Excavation will occur inside.

MITIGATIONS TO REDUCE COMMUNITY IMPACT

- Noise and vibration monitoring devices are placed on site for active tracking of impact to ambient noise levels.
- Site hoarding is installed where possible to help reduce noise, including sound dampening blankets and dust barriers, to reduce noise and debris in the neighbourhood.
- Traffic control persons and safety gates, to ensure safe movement of vehicles, pedestrians, cyclists and transit, when construction vehicles need to access the sites.
- Continuous loop truck routes, reducing need for trucks to reverse using backup alarms.
- Street sweepers and wheel cleaning are used as needed, to ensure soil and sediment is kept off city streets and sidewalks.



Sound dampening blankets place on the inside of site hoarding.



Street sweeper cleaning debris and dirt from city streets.



Wheel cleaning shaker mat, to ensure trucks do not bring mud and soil into city streets. Paving is also underway on site.

COMMUNITY ARTWORK SURVEY UPDATE

- The art survey response was open from July 27th to August 23rd and is now closed.
- Communities across the future Ontario Line stations shared feedback on what best represents their neighbourhood and what their visions include for the community art panels.
- Metrolinx received a strong response from King & Bathurst residents and businesses. Details will be shared this fall.
- Artwork will appear alongside Ontario Line signage for the project.
- Thank you for participating and sharing your thoughts on how the art panels can positively impact your community.



CONTACT METROLINX AND STAY CONNECTED

Metrolinx will keep the community informed by providing Ontario Line updates and addressing questions and concerns effectively, and quickly. Visit [Metrolinx.com](https://www.metrolinx.com) to find information on participating in upcoming Ontario Line Construction Liaison Committees (CLC).

Connect With Us:

Email: OntarioLine@metrolinx.com

Telephone 24/7: 416-202-5100

Ontario Line e-newsletter: [Metrolinx.com/OntarioLine](https://www.metrolinx.com/OntarioLine)



Scan the QR code for Metrolinx e-newsletter subscription

Follow us on social media:



@OntarioLine



Départs in 14 minutes

Osgoode
Queen
Moss Park
Cork Town

East Harbour
Leaside
Gerrard
Pape
Cosburn

Departs
Départ
4 min

King-Bathurst

Departs	18:20	18:30
18:20	18:20	18:30
18:30	18:30	18:40
18:40	18:40	18:50

King-Bathurst

King-Bathurst





KING-BATHURST