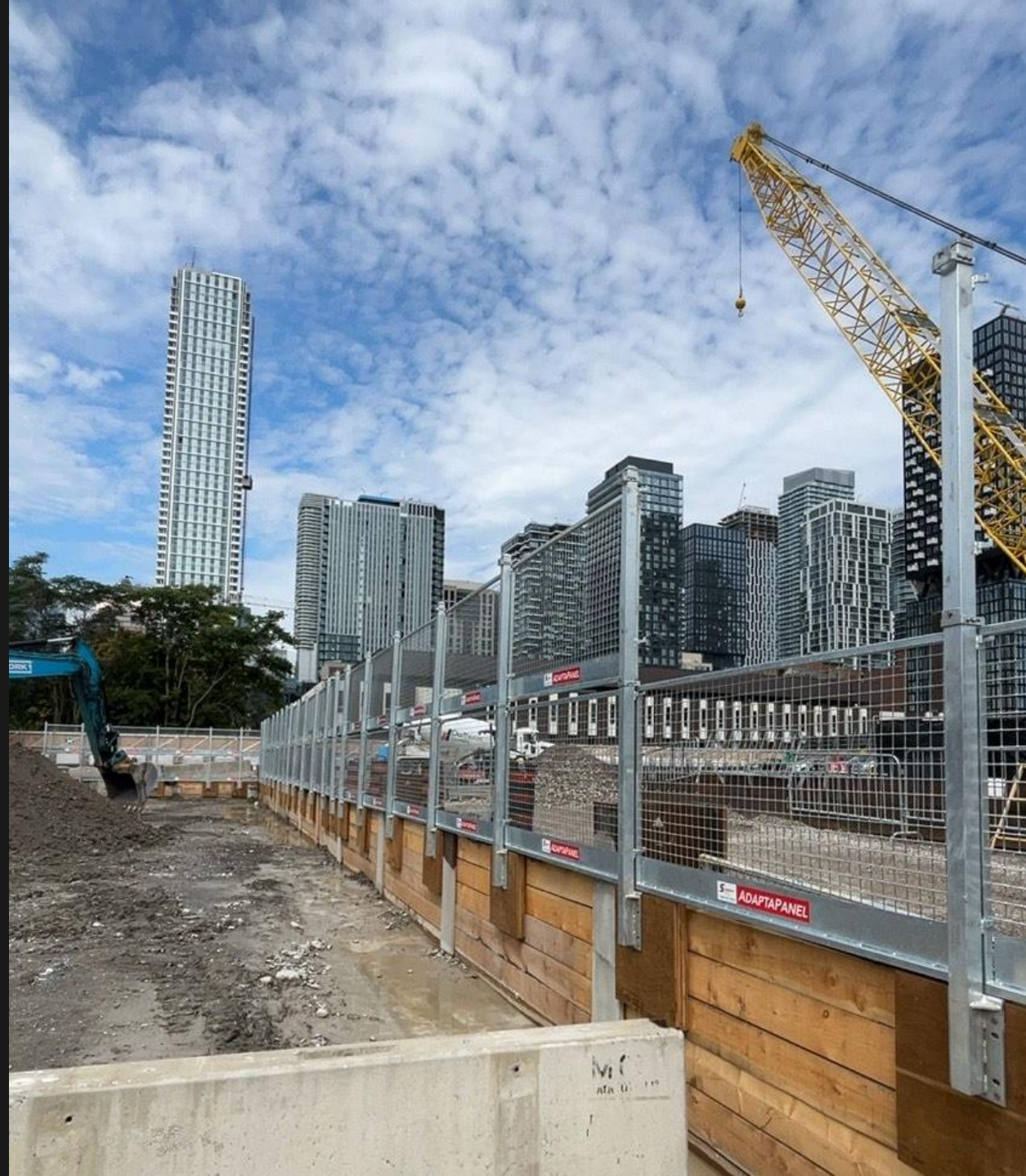


Ontario Line

Moss Park Construction Liaison Committee

Augst 8, 2024

 METROLINX



Agenda

Welcome (5 minutes)

- Introductions
- Land Acknowledgement
- Safety Moment

Presentation (25 minutes)

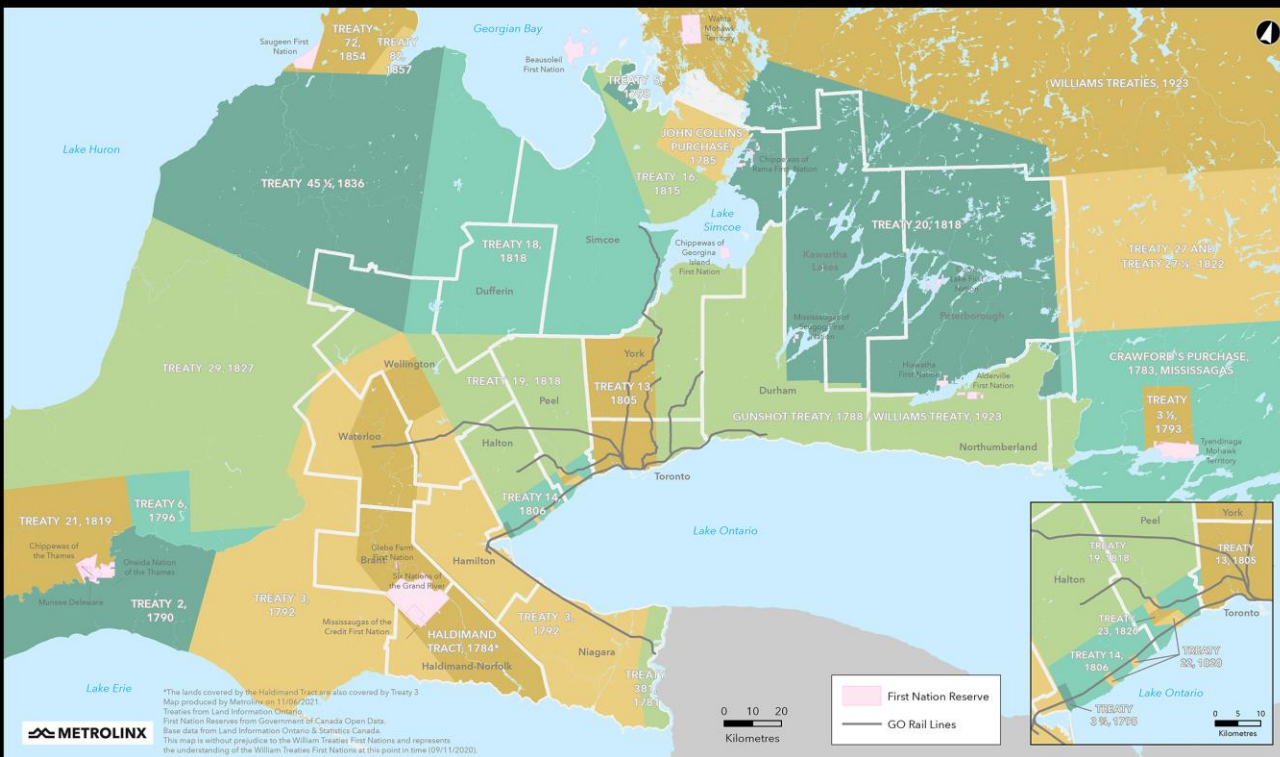
- Review of Action Items
- Moss Park Construction Updates
- Community Engagement
- We Are Here For You

Feedback and Discussion (30 minutes)



Land Acknowledgment

Treaties and Reserves in the Greater Golden Horseshoe



Let us take a moment to acknowledge we are on lands that have been, and continue to be, home to many Indigenous Peoples including the Anishnabeg, the Haudenosaunee and the Huron-Wendat peoples.

We are all Treaty people. Many of us have come here as settlers, as immigrants or involuntarily as part of the trans-Atlantic slave trade, in this generation, or generations past.

We acknowledge the historic and continued impacts of colonization and the need to work towards meaningful reconciliation with the original caretakers of this land.

We acknowledge that Metrolinx operates on territories and lands covered by many treaties that affirm and value the rights of Indigenous communities, Nations and Peoples.

We understand the importance of working towards reconciliation with the original caretakers of this land. At Metrolinx, we will conduct business in a manner that is built on a foundation of trust, respect and collaboration.

Safety Moment - Navigating Construction Zones Safely

As construction activity intensifies in Toronto this summer, it is vital for all residents and commuters to remain vigilant and prioritize safety. Whether you are driving, walking, or cycling, understanding the risks and safety measures can prevent accidents and injuries.

Here are some important safety tips:

Awareness and Vigilance: Pay close attention to all signage and signals in and around construction zones. These are placed to guide and protect you. Watch out for moving machinery, trucks, and other equipment.

Traffic Management: Follow the designated pathways and avoid restricted areas. If you are driving through a construction zone, reduce speed and follow the directions of traffic control personnel. Be prepared for sudden stops or changes in traffic patterns. Pedestrians and cyclists should use the designated detours and avoid walking or biking through construction zones.

Public Safety: Ensure that barriers and signage are in place and clearly visible to protect pedestrians and cyclists. Educate children about the dangers of construction sites and ensure they stay clear of these areas.

Reporting Hazards: If you notice any unsafe conditions or hazards in a construction zone, report them immediately to the relevant authorities. Your vigilance can help prevent accidents.



PREVIOUS CLC MINUTES AND ACTION ITEMS

ACTION ITEM	STATUS UPDATE
<p>Metrolinx to advise MPP Wong-Tam’s office and the Moss Park Coalition of when to expect the community artwork survey, once a launch timeline is selected.</p>	<ul style="list-style-type: none">• Email communication issued on August 1, survey closes August 23.
<p>Metrolinx to send out a copy of the presentation and calendar invites for all future meetings.</p>	<ul style="list-style-type: none">• Ongoing

Construction Update

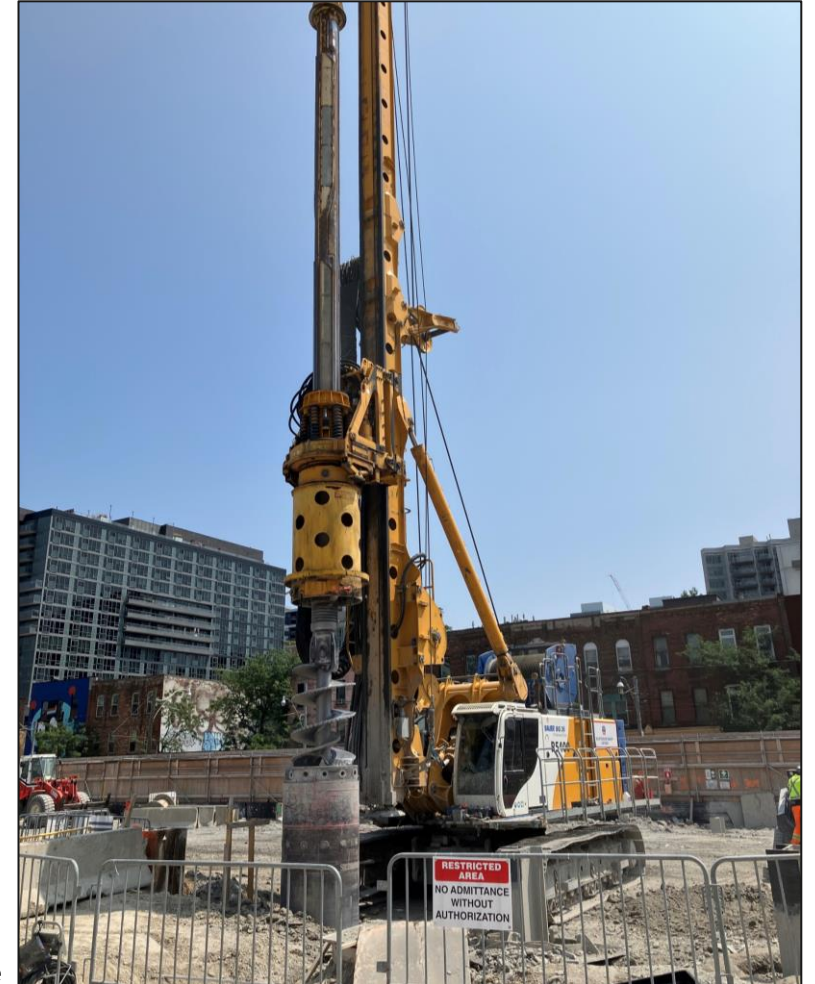
Excavation in progress in the west, the last of the piles being drilled to the east.



Completed Work

Completed work

- All 408 drilled piles completed on July 23
- Concrete guide wall removal
- Power distribution



Drilling of the last pile

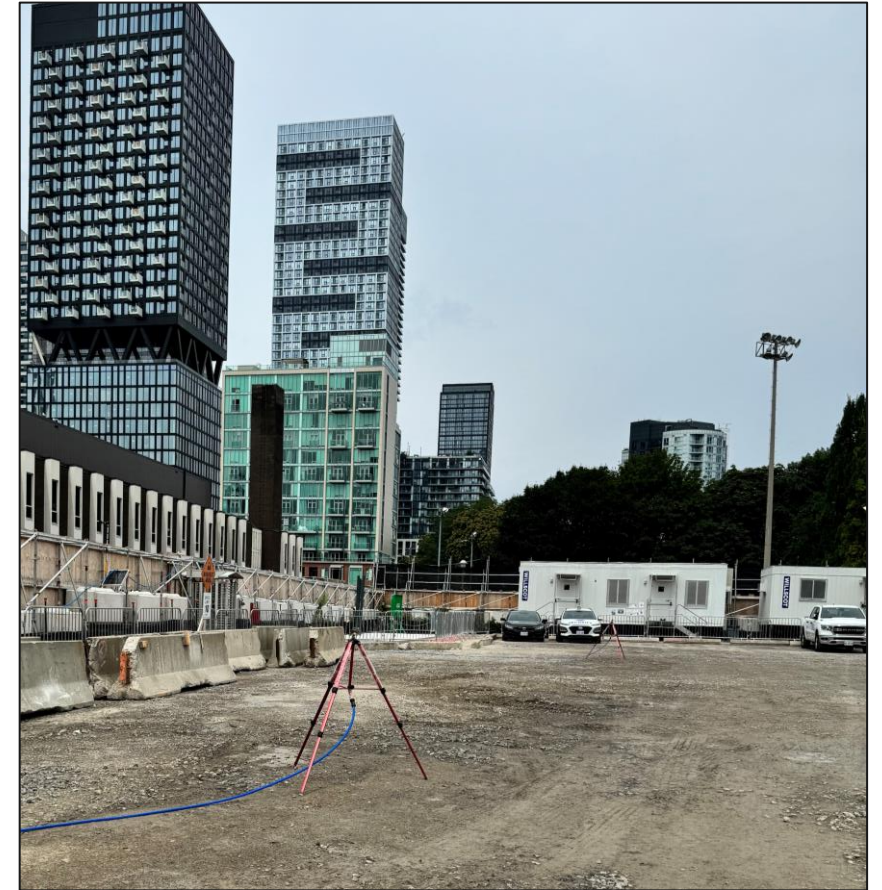
Pile drilling completed



Current Work

Current work

- **Level 1 excavation (roof slab) near completion.** Approximately 3,000m³ of soil removed from the western portion of the shaft site
- Timber lagging installation
- Shaft guardrail installation
- Drainage system; sewer bypass, water supply
- Power substation pad + hydro connection preparation
- Site servicing (backfill, grading)
- Site maintenance (interior/exterior)



Sprinkler system in the west looking north

Preparing the secant walls for struts and walers



Timber lagging at the northeast corner



Upcoming Work

Upcoming work

- Excavation level 2 (headhouse)
- Excavation level 2 (roof slab) in the west
- Struts and waler beams delivery and installation
- Tower crane delivery and installation
- Power substation connection and installation
- Paving site access



Example of shaft excavation, with walers and struts

Community Artwork

Community Artwork

We want to hear from you!

- In fair practice across the south civils alignment of the seven (7) stations of the Ontario Line, community consultation for the artwork panels is underway.
- The community's voice will influence the selected artwork for identified site panels.
- Artwork will appear alongside Ontario Line signage for the project.
- Feedback will be collected through engagement with the community via an online survey.
- **To access the survey, scan the QR code or access at metrolinx.com/OntarioLineCommunityArt**



Reply by August 23rd

Launching the art survey – Moss Park Summer Festival

At the Moss Park Summer Festival, Metrolinx and OTG **launched the artwork survey to the community.** Some attendees were handed **postcards** with a QR code linking them to the survey questions or a **printed survey handed out, encouraging them to share their thoughts and feedback** on the artistic expressions that would **best reflect the community's spirit** on the designated panels. We are excited at the number of responses received thus far!



Community Engagement

Ongoing Community Canvassing and Participation

Project staff and representatives will continue ongoing interaction with the community, for the duration of the project. Activities will include:

- Pop-ups presences in the community (parks, events, markets)
- **Metrolinx attending "Sunday in the Park" on August 25, 1 to 5 p.m.**
- Pop-ups in residential building lobbies
- Monthly CLC meetings: *Next meeting Sept. 12, 2024*
- In-person and virtual consultation with residences and businesses
- Shop Local digital campaigns, supporting communities affected by Ontario Line Construction
- News, progress and information shared in the Ontario Line newsletter (currently over 6,600 subscribers)



Metrolinx attended Sunday in the Park, August 2023

Community Engagement Contact Information

We are here for you! Metrolinx will keep the community, residents and businesses informed by providing project updates.

Metrolinx will keep the community, residents and businesses informed by providing project updates, seeking input and feedback and addressing questions and concerns effectively and quickly.

Connect With Us:

- Zahrah Munas , Community Engagement Advisor Zahrah.Munas@metrolinx.com, 437-328-5354
- Mark Clancy, Senior Manager, Community Engagement Mark.Clancy@metrolinx.com, 647-449-2857
- Ontario Line at OntarioLine@metrolinx.com

Telephone 24/7 @ 416-202-5100

Ontario Line e-newsletter @ [Metrolinx.com/OntarioLine](https://www.metrolinx.com/OntarioLine)

Follow us on social media @ OntarioLine

Discussion

