

Ontario Line

# Exhibition Station

## Construction Liaison Committee

September 10, 2024

 METROLINX



# Agenda

## Welcome

- Land Acknowledgement
- Safety Moment
- Objectives
- Ontario Line & Exhibition Station Overview

## Presentation

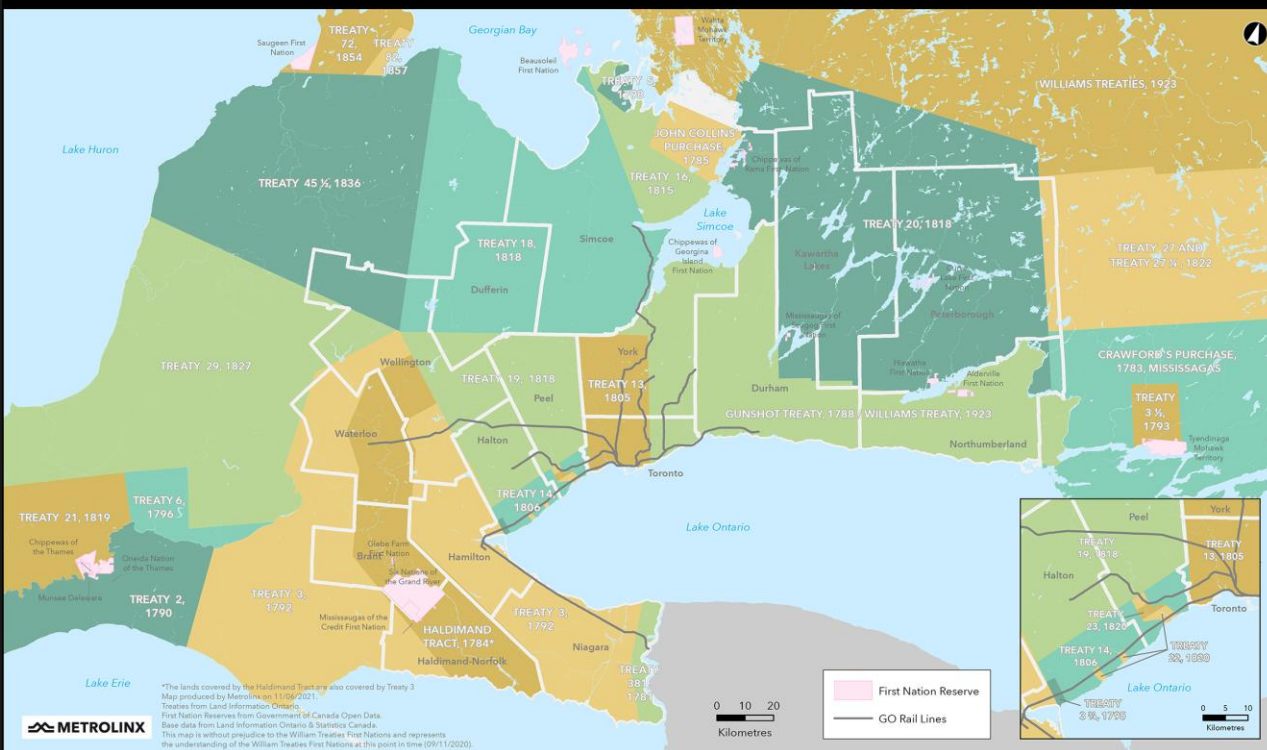
- Update on Route & Access Evaluation
- Update on Exhibition Construction
- Next Steps

## Q/A and Discussion



# LAND ACKNOWLEDGEMENT

Treaties and Reserves in the Greater Golden Horseshoe



Let us take a moment to acknowledge we are on lands that have been, and continue to be, home to many Indigenous Peoples including the Anishnabeg, the Haudenosaunee and the Huron-Wendat peoples.

We are all Treaty people. Many of us have come here as settlers, as immigrants or involuntarily as part of the trans-Atlantic slave trade, in this generation, or generations past.

We acknowledge the historic and continued impacts of colonization and the need to work towards meaningful reconciliation with the original caretakers of this land.

We acknowledge that Metrolinx operates on territories and lands covered by many treaties that affirm and value the rights of Indigenous communities, Nations and Peoples.

We understand the importance of working towards reconciliation with the original caretakers of this land. At Metrolinx, we will conduct business in a manner that is built on a foundation of trust, respect and collaboration.

## SAFETY MOMENT - BACK TO SCHOOL

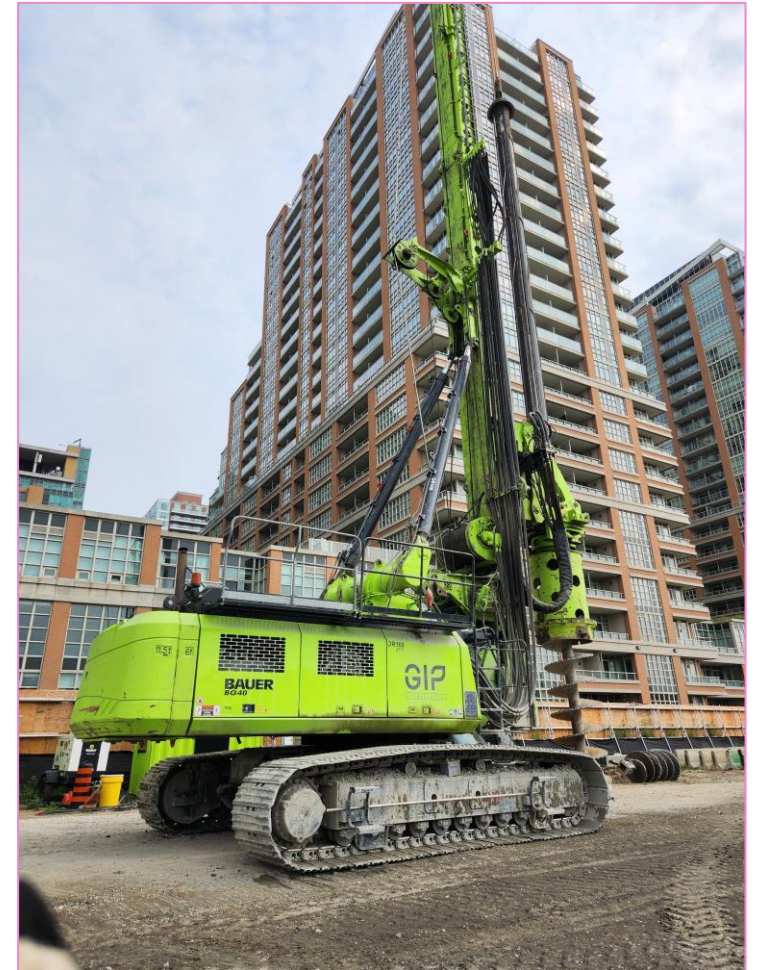
Let's all do our part to ensure everyone stays safe during the busy back-to-school season, especially in areas near ongoing construction.

- 1. Watch for Construction Vehicles:** Be aware of activity near construction zones, especially during school drop-off and pick-up times. Large vehicles may have blind spots, so maintain a safe distance.
- 2. Obey Traffic Signs and Signals:** Follow all posted signs and signals in and around construction zones, especially in school zones. Reduced speed limits and temporary detours are in place to keep everyone safe
- 3. Use Designated Crosswalks:** Teach children to use designated crosswalks and avoid shortcuts through construction areas. Construction sites can have hidden hazards.
- 4. Stay Alert:** Avoid distractions like phones while driving or walking near construction sites. Be especially cautious around areas where children are present.
- 5. Plan Your Route:** Allow extra time for your commute and consider alternate routes to avoid construction zones during peak school hours.



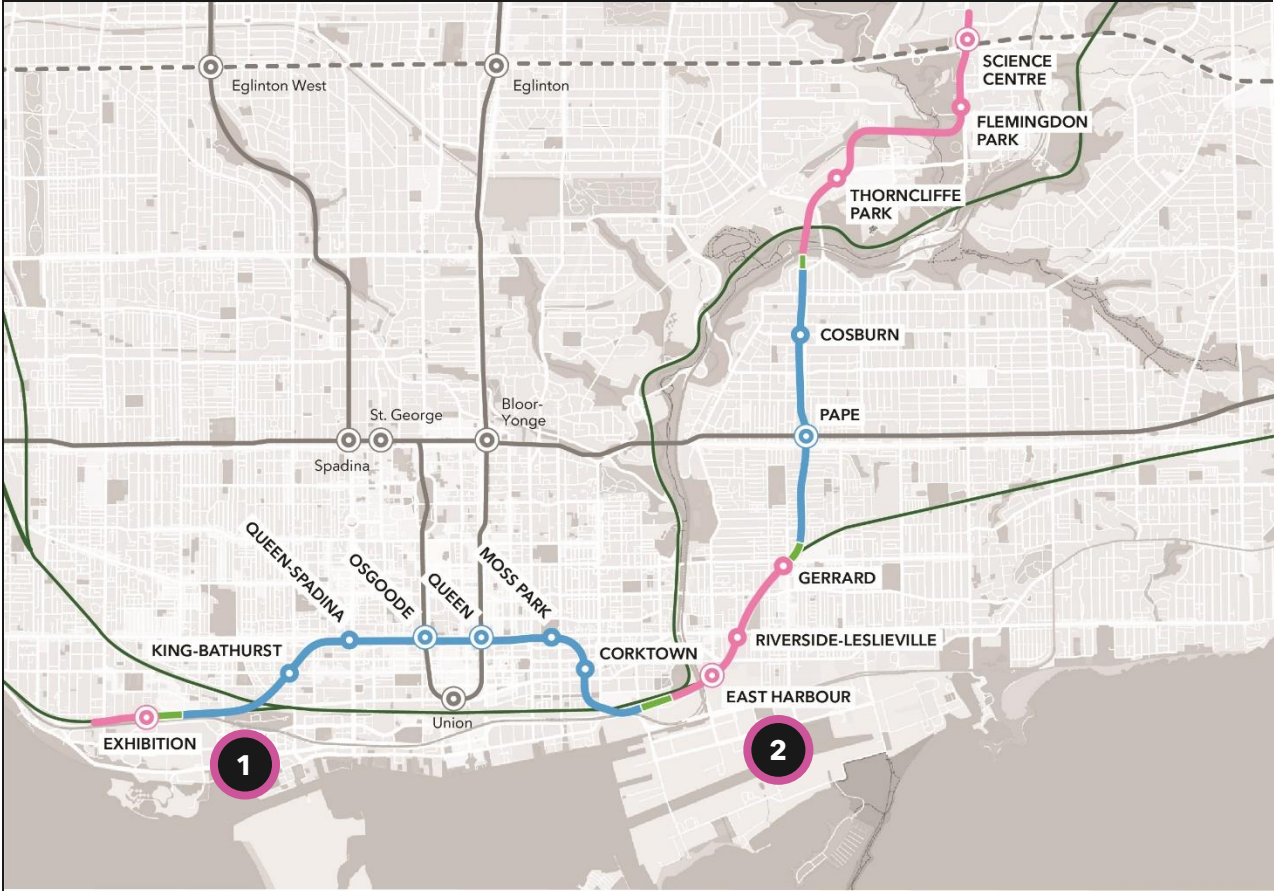
## TODAY'S OBJECTIVES

1. Provide an update on ongoing discussions between Metrolinx and the City of Toronto regarding construction vehicle routes to support the Ontario Line at Exhibition & Liberty Village.
2. Offer a progress update on ongoing construction works to deliver the Ontario Line to Exhibition Station and Liberty Village.
3. Discuss CLC member questions related to Ontario Line project construction



*Drill rig machinery working to create the Ontario Line portal, east of Exhibition Station.*

# ONTARIO LINE SUBWAY



— At Grade / Elevated   
 ● Station   
 — Existing GO Rail   
 - - - Future Line 5 Eglinton   
   
   

— Tunnelled   
 ● Interchange Station   
— Tunnel Portal   
— Existing Subway

1 **South Alignment of Ontario Line**  
 (Exhibition to Corktown/Don Yard)

2 **North Alignment of Ontario Line**  
 (East Harbour to Science Centre)



15.6 kilometres long



15 stations



As frequent as every 90 seconds during rush hour



227,500 more people within walking distance to transit



388,000 daily boardings



40+ connections to other transit options



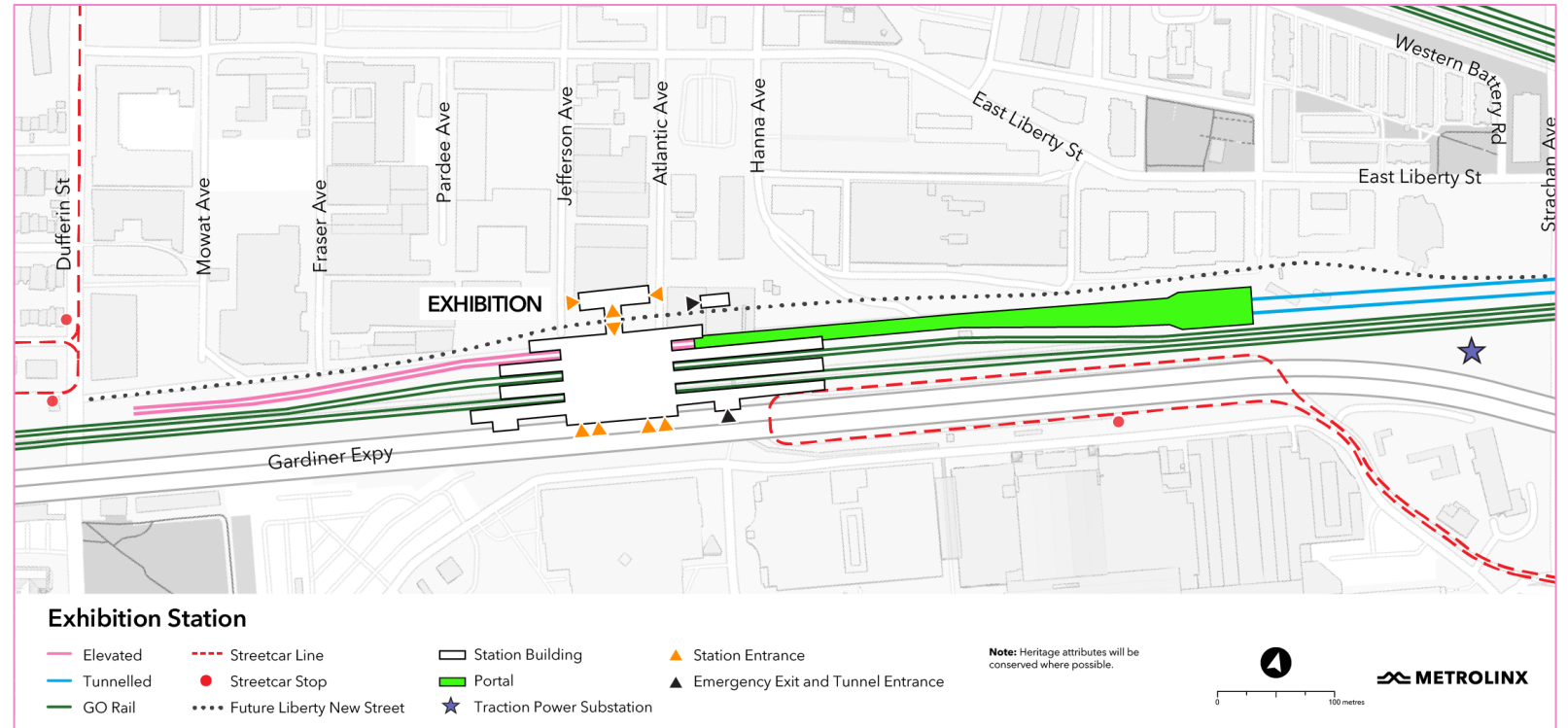
Up to 47,000 more jobs accessible in 45 minutes or less, on average



28,000 fewer cars off the road each day

## AN ACCESSIBLE, UPGRADED TRANSIT HUB SERVING EXHIBITION & LIBERTY VILLAGE

- The Ontario Line station at Exhibition Place will create a connection to the GO Transit rail network and **bring the subway system closer to many homes and businesses** in the growing and vibrant Liberty Village community.
- The shared concourse between the Ontario Line and Lakeshore West GO train will **make transferring quick and seamless**.
- Giving customers another way to transfer from subway to GO train will take pressure off Union Station, the country's busiest transit hub.
- This new interchange will help reduce crowding at Union by about 14 per cent - or 14,000 fewer people - during rush hour.



Ontario Line

# Exhibition Station: Traffic Management Update





## TRAFFIC MANAGEMENT UPDATE AND NEXT STEPS

Several traffic management plan options have been assessed in coordination with City and TTC capital Plans to accommodate construction at Exhibition Station, the portal and tunnel which are expected to bring high volumes of construction traffic to the area.

- The construction works require access from both west and east ends. The east end access is essential not only because it is close to the portal lands, which creates the highest volume of trucks, but it also avoids traffic through East Liberty Street and Liberty Street.
- The Hanna Avenue construction gate currently being utilized will continue to act as an ingress/egress point for the limited construction activities. The ramp up in traffic volumes is expected in Summer 2025 as tunnelling activities start.
- Metrolinx heard feedback from the community in the last CLC where concerns were raised around the existing traffic conditions on Liberty and East Liberty streets and along Strachan Avenue. Options were discussed to avoid or reduces the use of these streets.

Metrolinx identified options for further detailed evaluation and assessment with its Contractor below. **Metrolinx to share initial Contractor assessment - expected in October 2024.**

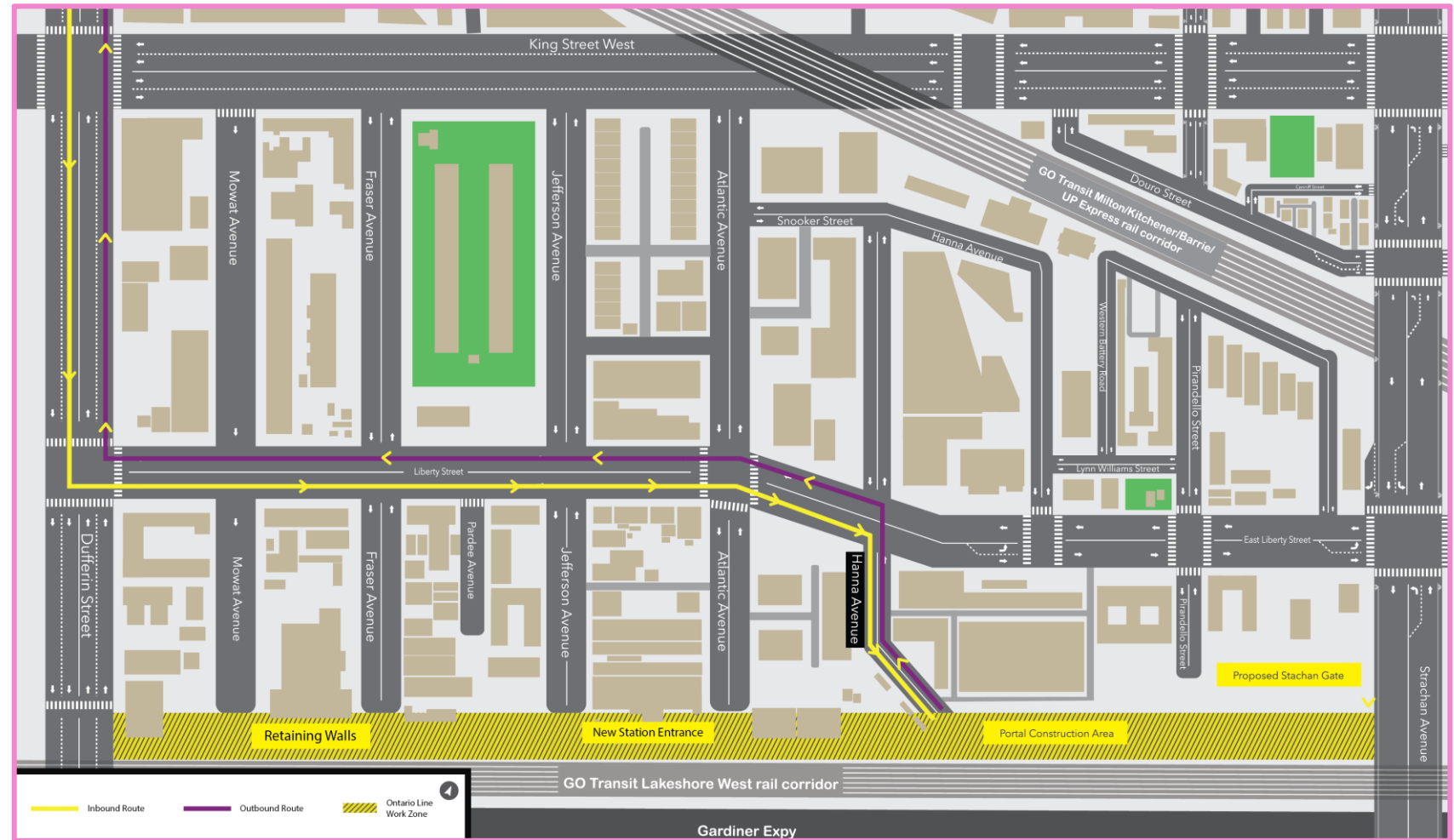
OPTION	Metrolinx Initial Assessment
Building conveyor belts that takes the spoils from west to Dufferin Street.	Requires 12 months lead in time.
Building/extending a conveyor belt from the tunnel east under the Strachan bridge to Ordnance Park.	Not feasible as space available under Strachan bridge and along corridor is not sufficient
Creating a truck haul route from Strachan to Ordnance Park passing under Strachan bridge to the portal area.	
Extending a track spur next to Track 1 and use an engineering train to move the spoil.	Creating a conveyor over the rail corridor and Gardiner is significant undertaking
Moving the spoil across the railway from north to south using a conveyor or a tunnel	

Metrolinx remains committed to investigating minimizing potential traffic impacts on Liberty and East Liberty streets and at the Strachan intersection. However, there is no option that would take away entirely the need for the Strachan Avenue access.

## CURRENT TRUCKING ROUTES TO SUPPORT PILING

Trucking routes in support of pile drilling operations are using Hanna Avenue, as an entry and exit point.

- Several trucks entering and leaving worksites daily, following a specified route.
- Trucks entering will use Dufferin toward Liberty Street eastbound, and then Hanna Avenue.
- Exiting vehicles will travel on Hanna Avenue toward Liberty Street westbound, and then north on Dufferin Street toward Queen Street West, eastbound.
- Expansion of routes will be needed in 2025 to accommodate additional construction and tunneling.



Trucking routes are subject to change.

Ontario Line

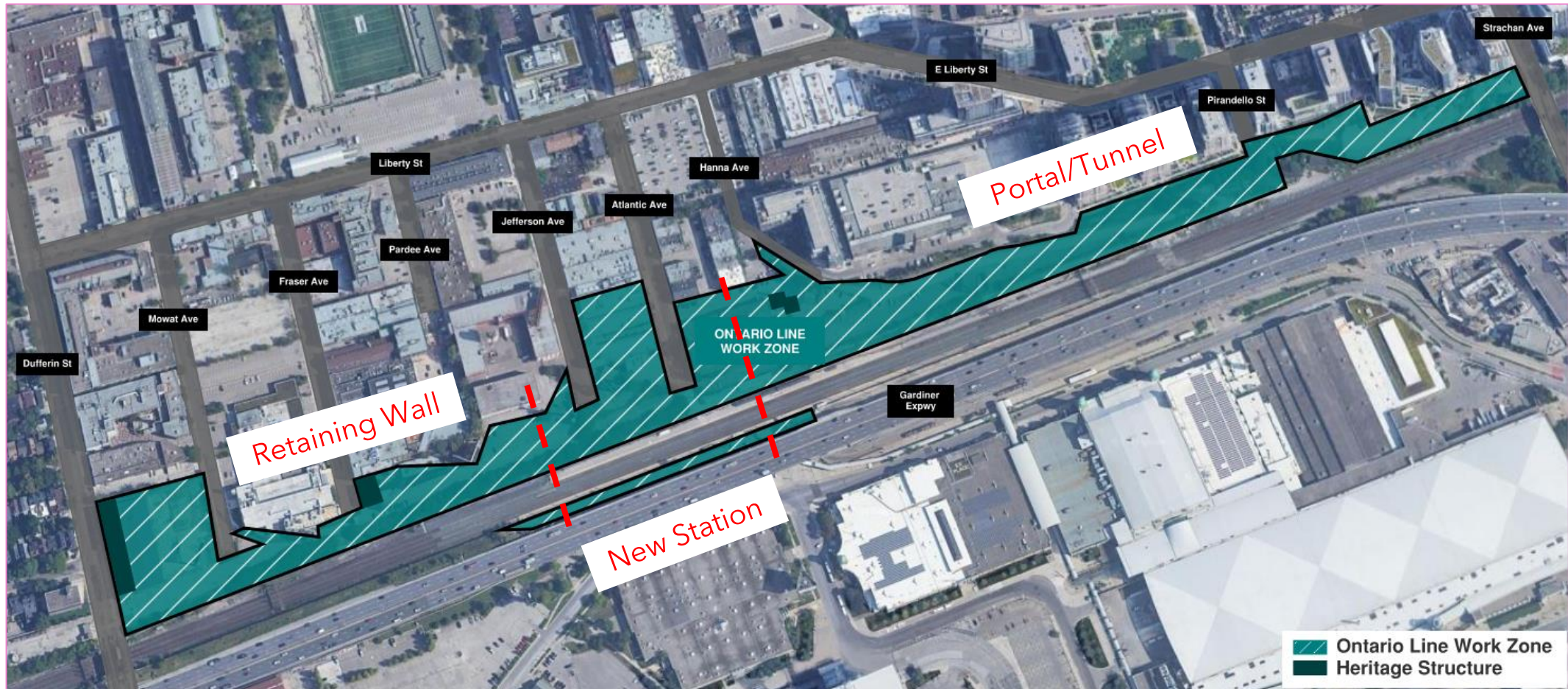
# Exhibition Station: Construction Update



Note: Initial concept rendering. Designs – including finishings, signage, and accessibility features – to be informed by further planning and consultation.

## ONTARIO LINE WORK ZONE AT EXHIBITION/LIBERTY VILLAGE

To enable the Ontario Line to be built at Exhibition, construction works are **operating in a linear work zone parallel to the GO Transit Lakeshore West tracks**, south of Liberty Village, from Strachan Avenue to Dufferin Street, where the future Ontario Line will exist.



# ESTIMATED LONG TERM LOOK-AHEAD AND MAJOR MILESTONES

**2022-24**

GO rail track and station work  
 Preparatory work: building demolition and utility works  
 Portal structure start

**2025-26**

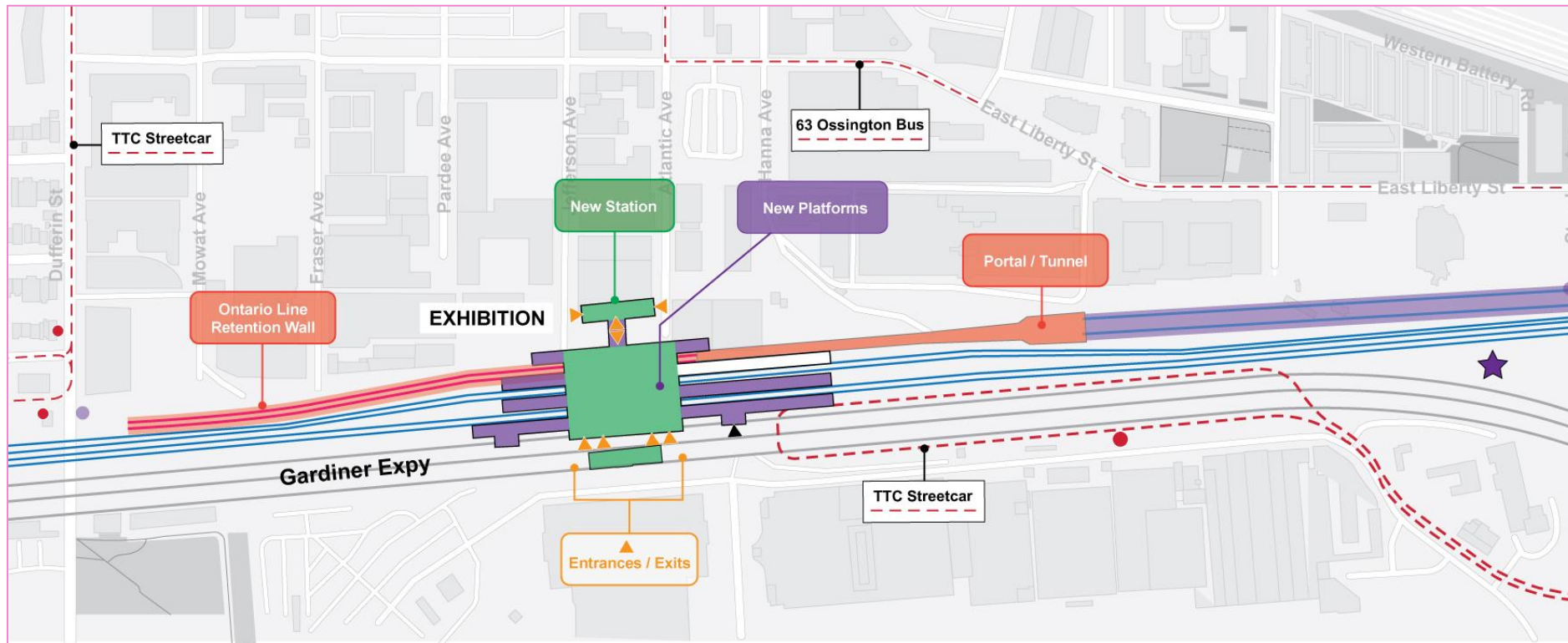
Portal structural completion  
 Insertion of Tunnel Boring Machines and tunneling eastbound  
 New station footings

**2026-27**

Station platform construction begins  
 New station structure  
 Removal of temporary pedestrian bridge  
 Ontario Line right-of-way prepared for track work

**2027-28**

Completion of station building  
 Construction of Station Canopy over all 6 tracks  
 Completion of station platforms



*All timelines estimated and subject to change*

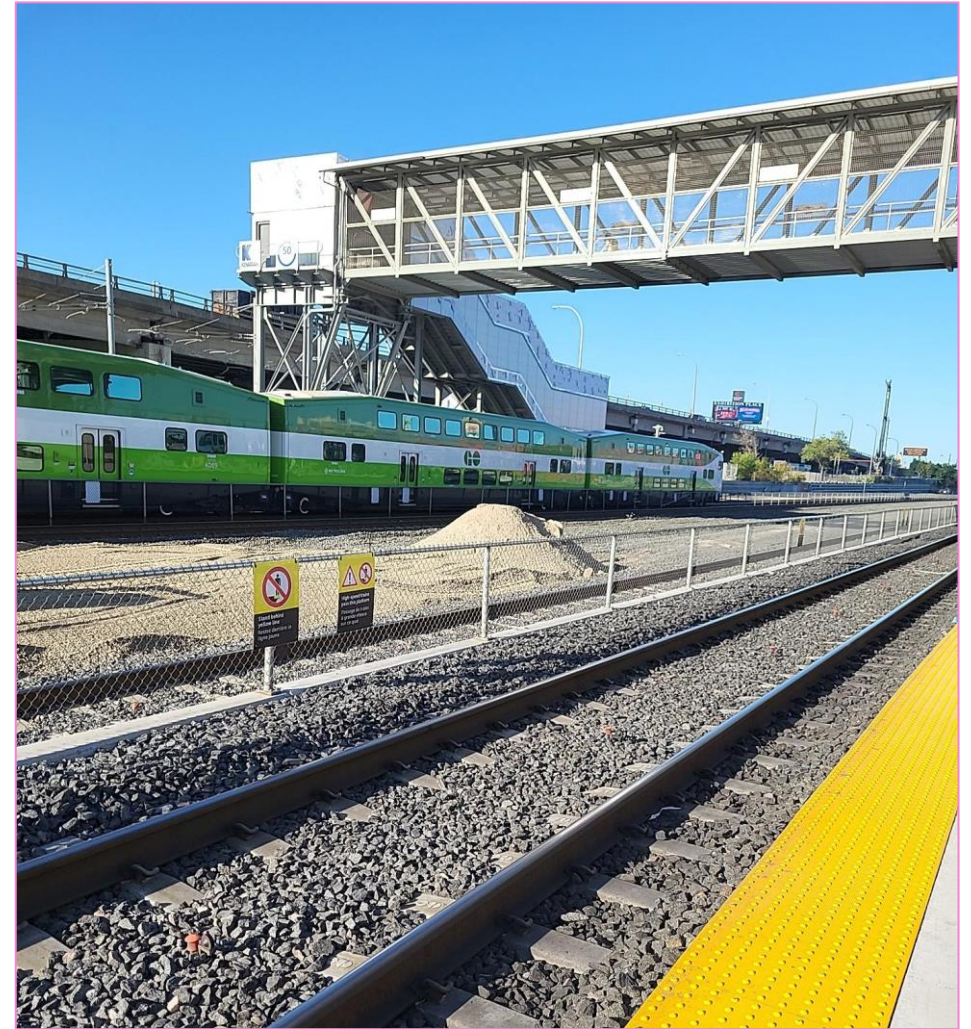
## 2024 CONSTRUCTION LOOK AHEAD

Activity	Location	Details & Purpose
Excavation & Piling	North of the rail corridor, between Jefferson Avenue and Dufferin Street.	Excavation work to prepare grading and a new hydro chamber north of the railway, while trenchless crossing work is ongoing, in advance of Ontario Line tracks, west of the existing station.
Portal Works & Piling	North of the rail corridor, between Hanna Avenue and Pirandello Street.	Piling work for the portal ensures structural support for the walls and tunnels are in place in advance of tunnel boring for the future western tunnel exit of the Ontario Line subway.
Station Site Entry Preparation (North)	North of the rail corridor, between Atlantic Avenue and Jefferson Avenue.	Early foundational preparedness works leading to piling, for the future north entrance of the new Exhibition Station.
Station Site Entry Preparation (South) and Demolition of Retaining Wall	South of the rail corridor, north of the streetcar loop, under the Gardiner Expressway.	Early foundational works for the future south entrance of the new Exhibition Station, which includes demolishing the existing retaining wall.
Demolition of Retaining Wall	South of the rail corridor, north of the streetcar loop, under the Gardiner Expressway.	A new wall will be built between the street and the tracks, which includes demolishing the existing retaining wall.

*All works and timelines estimated and subject to change.*

## PROGRESS TO DATE AT EXHIBITION STATION

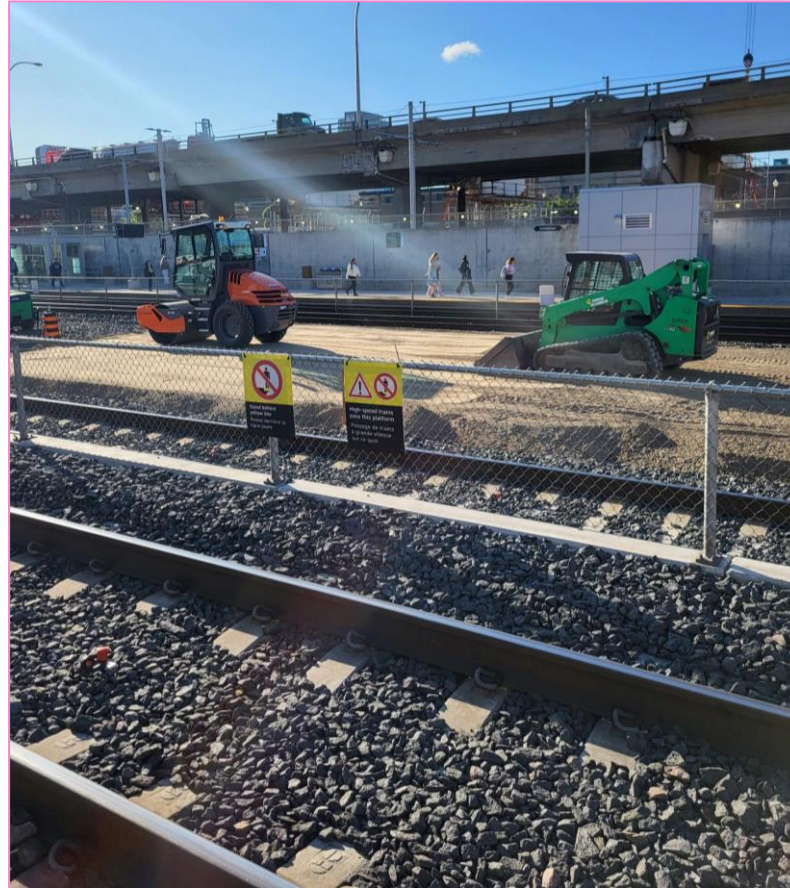
- Two **new GO train platforms are now open**, which will connect to the Ontario Line platform and the TTC streetcar loop in the future, for easier transfers. The former south platform has been closed.
- A **new pedestrian bridge and extended tunnel** for accessibility have been completed at the station and will enter full service shortly.
- Completion of **two successful track shifts within the rail corridor** at the current Exhibition GO Station to prepare the way for new platforms that will serve both the Ontario Line subway as well as current and future GO rail operations.



*Exhibition Station north platform, looking west.*

## ISLAND PLATFORM EARLY WORKS - EXHIBITION STATION

- Early works to create a **new centre platform** foundation for Exhibition GO Station are underway.
- Through fall 2024, the preliminary work scope includes levelling the existing ballast (stones on the railway) and placing crushed concrete to build a working platform, as well as **enable piles and piers**.

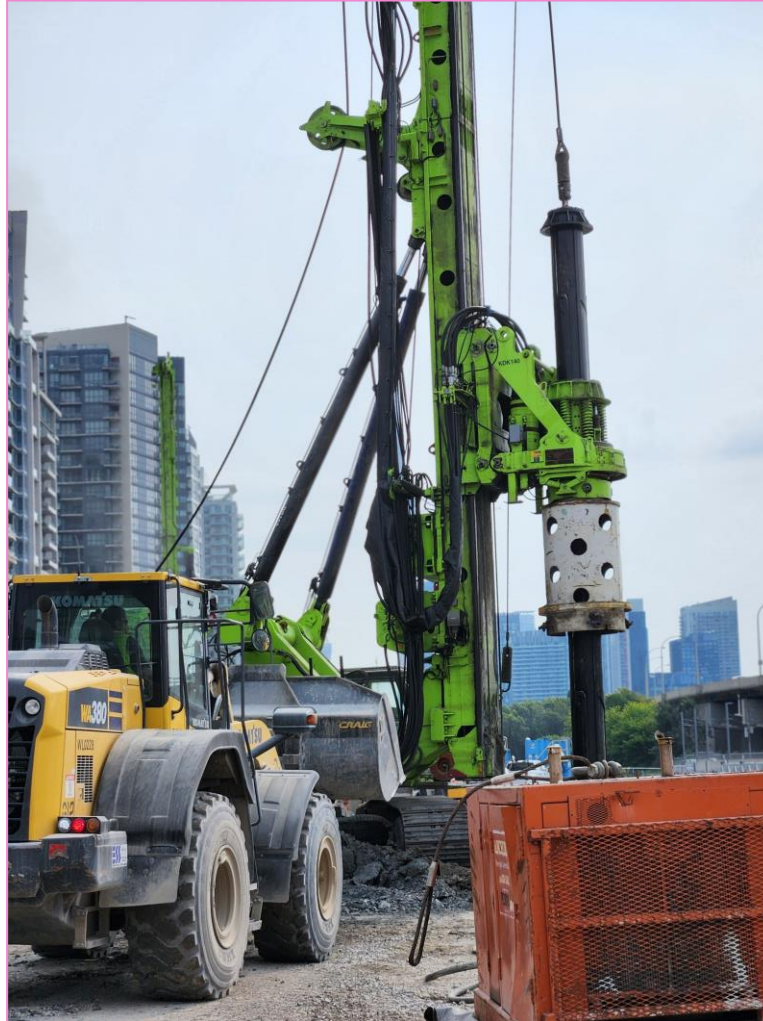


*Centre platform grading and foundational early works at Exhibition Station north platform, looking south.*



## ONTARIO LINE PORTAL PILING PROGRESS

- **Land grading and piling is underway** at the future subway portal location, to allow for excavation and tunneling to occur.
- This work ensures the ground is level and reinforced, in advance of excavation and tunneling, known as 'SOE' - support of excavation.
- At present, 4 tall green drill rigs are on site, and approximately 370 piles have been driven into the ground, which is **62% completion of all planned Ontario Line portal piles.**



*A drill rig working at Exhibition (left), and steel I-beams delivered to the Ontario Line portal area (right).*

## NEW STATION BUILDING SITE & FOUNDATION

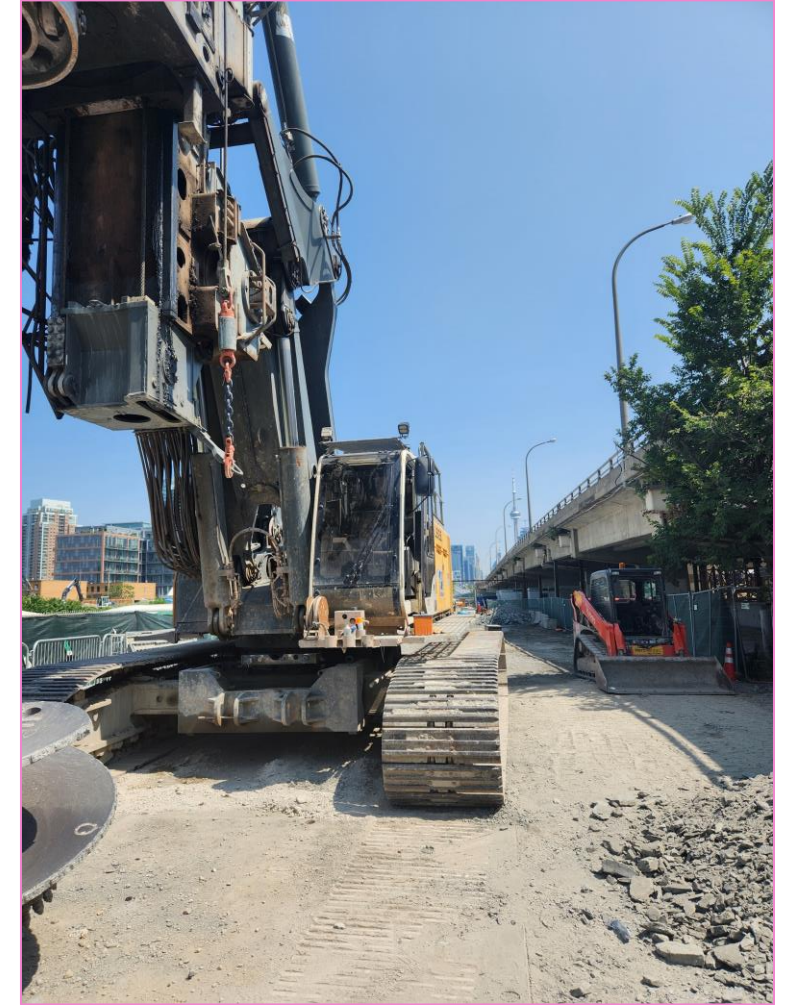
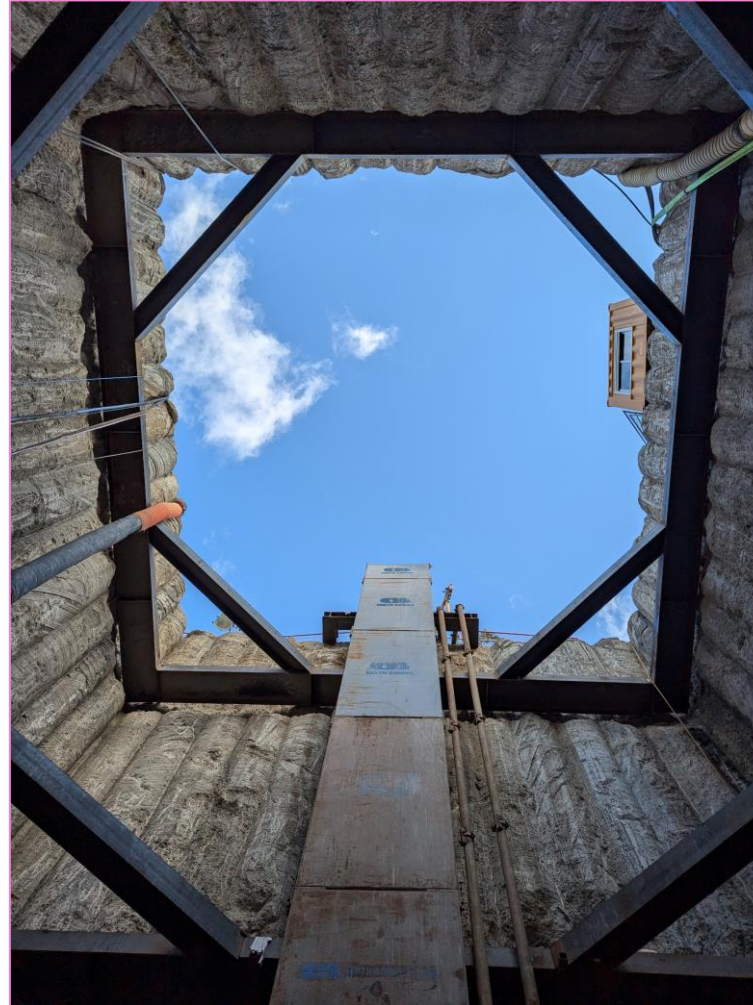
- Between Atlantic Avenue and Jefferson Avenue, at the south end of Liberty Village, north of the railway, the land for the future home of the Exhibition GO station building is being graded and prepared for foundational work
- Demolition, utilities relocation and grading works are nearing completion as whole, and the land will soon be transformed again, as a concrete base is poured, acting as the foundation of the new north station building.
- Protective hoarding is being installed along Atlantic Avenue, on the east side of the site.



*Graded land between Atlantic Avenue and Jefferson Avenue, looking south towards BMO Field.*

## UTILITIES RELOCATION UNDER THE RAILWAY

- On the west end of the construction site, a **two new shafts have been created**, acting as sending and receiving shafts for 2 utilities tunnels under the railway.
- Each shaft is roughly 17m deep and connects from the north side of the railway to the south side, just under the Gardiner Expressway and east of Exhibition GO.
- This new tunnel system utilities are relocated away from construction and will be available for the new south and north station buildings at Exhibition.
- **This work was completed without disrupting any existing GO, VIA or Amtrak passenger service.**



*Left: Looking up the bottom of the north cable chamber, Right: a drill rig on site at the south side shaft.*

## ORDNANCE PARK EMERGENCY EXIT BUILDING (EEB) PROGRESS

- Support of excavation works are underway at Ordnance Park, enabling the future Ontario Line emergency exit building to be constructed.
- For piling works, secant piles were completed in late August.
- Crews are preparing the site for a tower crane to be installed, scheduled to take place in early fall.
- Excavation of the site will begin in mid-fall.



**Left:** Piling works underway at Ordnance Park.



**Right:** Protective hoarding in front of the site, against the city backdrop.

## COMMUNITY SAFETY MEASURES

As the work continues to deliver the Ontario Line, numerous safety protocols for trucks have been implemented across the various work sites, throughout Liberty Village:

- Traffic control flag persons are present (yielding stop / slow signs) at construction vehicle entry and exit points (gates) to give verbal and hand signal to the approaching delivery truck drivers.
- Constant communication with other transit control persons using radio, coordinating vehicle movements.
- Speed limit signs (10km/hr) that are posted and displayed at gates.
- Ongoing briefing with delivery truck companies to follow OTG Site Safety Requirements when entering and exiting.
- More signs will be posted regarding speed limits and construction hazards for the public awareness.



## MITIGATIONS TO REDUCE COMMUNITY IMPACT

- Noise and vibration monitoring devices are placed on site for active tracking of impact to ambient noise levels.
- Site hoarding is installed where possible to help reduce noise, including sound dampening blankets and dust barriers, to reduce noise and debris in the neighbourhood.
- Traffic control persons and safety gates, to ensure safe movement of vehicles, pedestrians, cyclists and transit, when construction vehicles need to access the sites.
- Continuous loop truck routes, reducing need for trucks to reverse using backup alarms.
- Street sweepers and wheel cleaning are used as needed, to ensure soil and sediment is kept off city streets and sidewalks.



*Sound dampening blankets to be placed on the inside of site hoarding.*



*Street sweeper cleaning debris and dirt from city streets.*



*Wheel cleaning shaker mat, to ensure trucks do not bring mud and soil into city streets.*

Ontario Line

# Q&A and Discussion

## CONTACT METROLINX AND STAY CONNECTED

**Metrolinx will keep the community informed by providing Ontario Line updates and addressing questions and concerns effectively, and quickly. Visit [Metrolinx.com](https://www.metrolinx.com) to find information on participating in upcoming Ontario Line Construction Liaison Committees (CLC).**

### Connect With Us:

Email: [OntarioLine@metrolinx.com](mailto:OntarioLine@metrolinx.com)

Telephone 24/7: 416-202-5100

Ontario Line e-newsletter: [Metrolinx.com/OntarioLine](https://www.metrolinx.com/OntarioLine)



*Scan the QR code for Metrolinx e-newsletter subscription*

### Follow us on social media:



@OntarioLine



Ontario Line

# Appendix - Future State Exhibition Station



Artist's rendering – subject to change. Transit-Oriented Community proposals not shown.





*Artist's rendering – subject to change. Transit-Oriented Community proposals not shown.*