

Ontario Line

Osgoode CLC Meeting

August 21, 2024

 METROLINX



Land Acknowledgment

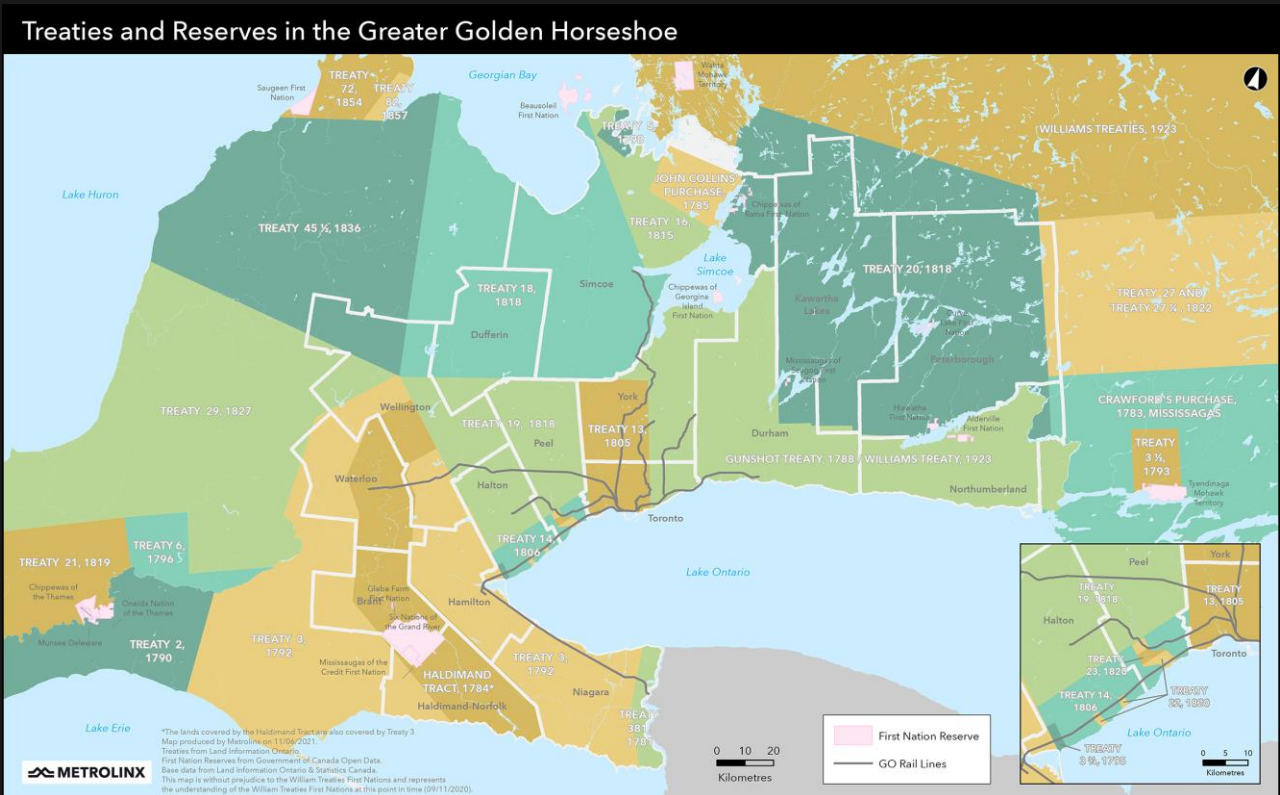
Let us take a moment to acknowledge we are on lands that have been, and continue to be, home to many Indigenous Peoples including the Anishnabeg, the Haudenosaunee and the Huron-Wendat peoples.

We are all Treaty people. Many of us have come here as settlers, as immigrants or involuntarily as part of the trans-Atlantic slave trade, in this generation, or generations past.

We acknowledge the historic and continued impacts of colonization and the need to work towards meaningful reconciliation with the original caretakers of this land.

We acknowledge that Metrolinx operates on territories and lands covered by many treaties that affirm and value the rights of Indigenous communities, Nations and Peoples.

We understand the importance of working towards reconciliation with the original caretakers of this land. At Metrolinx, we will conduct business in a manner that is built on a foundation of trust, respect and collaboration.



Safety Moment

Navigating Construction Zones Safely

As construction activity intensifies in Toronto this summer, it is vital for all residents and commuters to remain vigilant and prioritize safety.

Whether you are driving, walking, or cycling, understanding the risks and safety measures can prevent accidents and injuries.

Here are some important safety tips:

Awareness and Vigilance: Pay close attention to all signage and signals in and around construction zones. These are placed to guide and protect you. Watch out for moving machinery, trucks, and other equipment.

Traffic Management: -Follow the designated pathways and avoid restricted areas. If you are driving through a construction zone, reduce speed and follow the directions of traffic control personnel. Be prepared for sudden stops or changes in traffic patterns. Pedestrians and cyclists should use the designated detours and avoid walking or biking through construction zones.

Public Safety: Ensure that barriers and signage are in place and clearly visible to protect pedestrians and cyclists. Educate children about the dangers of construction sites and ensure they stay clear of these areas.

Reporting Hazards: If you notice any unsafe conditions or hazards in a construction zone, report them immediately to the relevant authorities. Your vigilance can help prevent accidents.



Agenda

Welcome (5 minutes)

- Introduction
- Land acknowledgement

Presentation (30 minutes)

- Action items
- York Street trackwork
- Construction updates
- Look ahead

Feedback and Discussion (15 minutes)



JULY CLC ACTION ITEMS

ACTION ITEM	STATUS UPDATE
<ul style="list-style-type: none">• Metrolinx and OTG to provide update on Osgoode South hoarding design, specific to the pedestrian walkway.	<ul style="list-style-type: none">• Walkway design in place to accommodate the retention towers and ensure public safety so people can't climb on to retention towers. Lighting in place. Metrolinx and OTG to arrange CPTED site walk.
<ul style="list-style-type: none">• Metrolinx to explore potential for an in-person CLC in the future, focusing on noise and vibration monitoring, and construction updates.	<ul style="list-style-type: none">• Metrolinx is considering incorporating this into for the September 25th CLC. An additional update will be provided closer to the date.

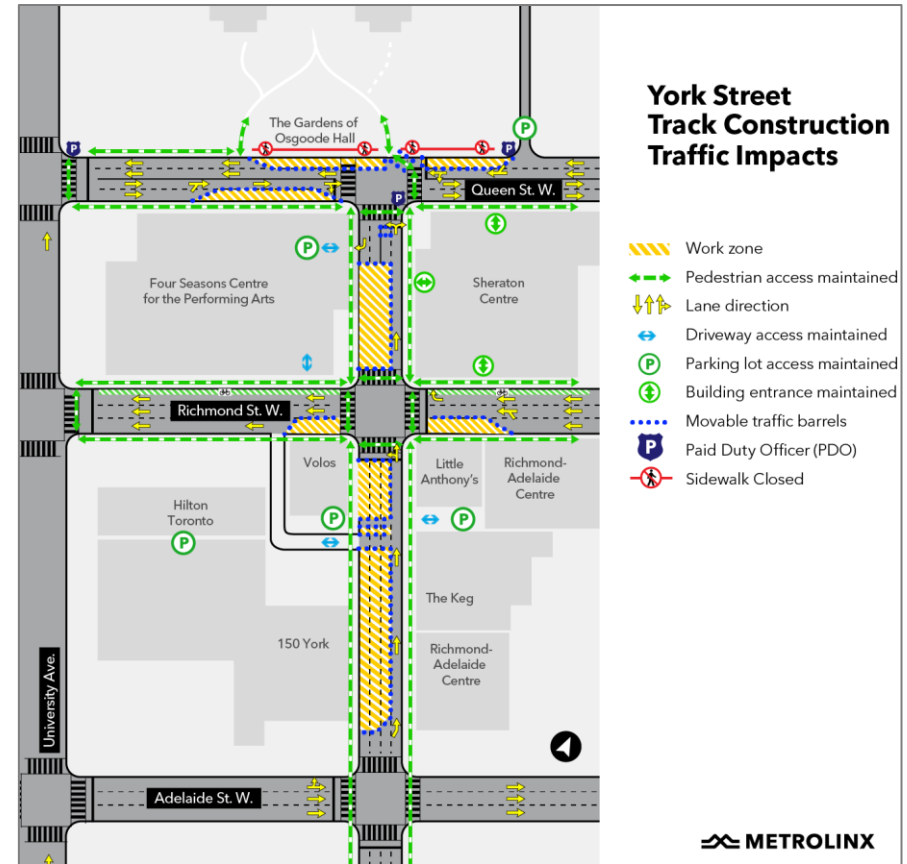
York Street Trackwork



Jul 22, 2024 at 9:02:20 AM
145A Queen St W
Toronto ON M5H 4G1
Canada

York Street Trackwork - Construction Update

- Streetcar track installation is now complete at the intersection of Queen Street West and York Street.
- Crews have shifted to the next phase of work which includes the **installation of overhead poles, surface asphalt installation, and remaining site clean-up.**
- Queen Street West is restricted to 2 lanes, with one lane eastbound and the other lane westbound. One lane northbound on York Street will remain open to vehicular traffic.
- This phase of work is expected to last four weeks. The north sidewalk is expected to be closed for approximately 10 working days.
- PDO's are on site to help safely direct traffic and pedestrians.
- Once this phase of work is complete, the site will be handed over to TTC to complete the remaining portion of the project.





Construction Updates - OTG

Construction Update

Piling at the future North station entrance

- Piling in the North is expected to start as early as August 26, 2024. The pile rig will be delivered as early as August 21.
- This work is expected to take place overnight (7:00 p.m. to 7:00 a.m.).
- The piles transfer the load of the future structure to deeper, more stable soil layers, preventing settlement or shifting. This foundational work provides a secure base, making the site safe and ready for subsequent excavation and construction activities.
- Piling is necessary to complete before starting the excavation work on the construction site to ensure structural stability and support.



Piling machine at the South site

Construction Update

University Avenue Realignment + Site Set-Up

- Earlier this month work was completed to realign traffic on University Avenue. Traffic lanes have now shifted.
- As such, fast fence has been added to extend the footprint of the worksite into the University Avenue curb lane.
- Crews are expected to start demolition of the former TTC stairwell as early as the week of August 26.
- Crews will also be conducting a curb cut on University Avenue to facilitate access to the North laydown site. This work is expected at the end of August.

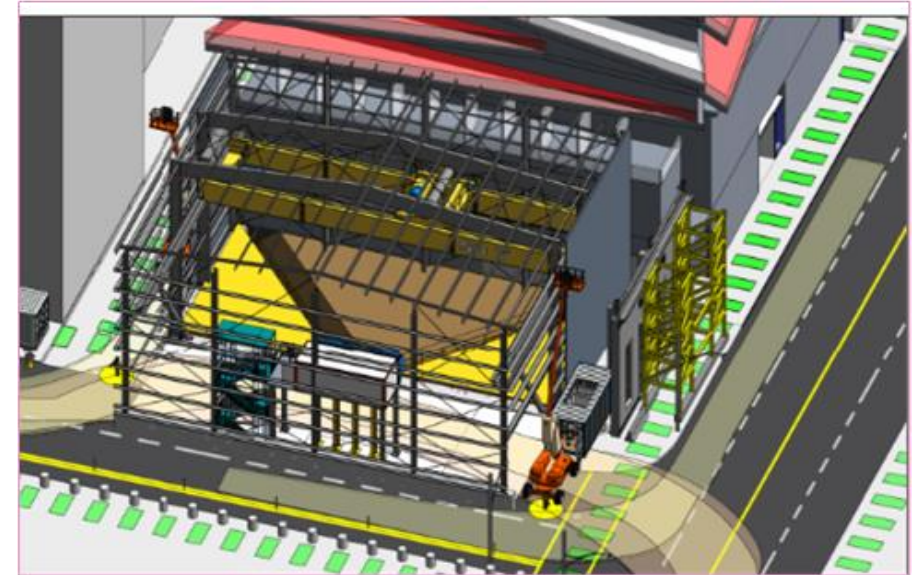


View of University Avenue realignment and new fencing configuration

Construction Update

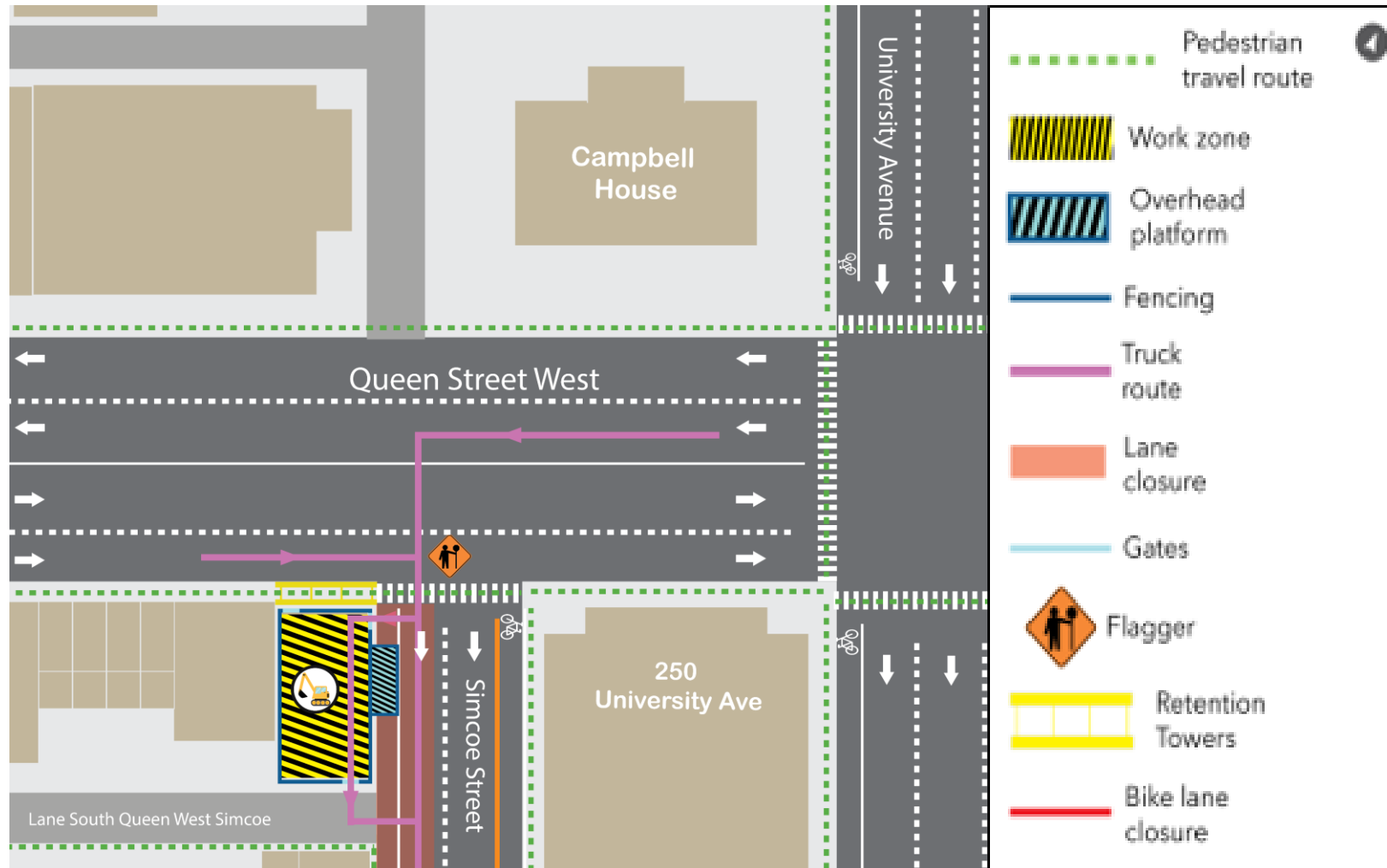
Preparation for excavation at the future South station entrance

- Crews are continuing work to prepare for the future excavation of the site, including cap beam installation.
- In the coming weeks, crews will prepare the site and begin installation of the acoustic shelter. Large steel beams will be placed to frame the shelter before the cover is installed.
- They will also install an overhead crane. This type of crane can move back and forth across the construction site, allowing it to load materials and deliver them to precise locations; in this case, above the future excavation shaft. The overhead crane will be used for excavation inside the acoustic shelter, as it lifts equipment and hoist up the excavated material.
- Excavation works are expected to start in October 2024. This work is expected to take place Monday through Friday on a 24-hour shift. The acoustic shelter will be in place to minimize noise impact to the community.



Artist rendering of the expected acoustic shelter frame for reference only. The final shelter will be covered / fully enclosed.

SITE ACCESS POINTS - SOUTH SITE



MINIMIZING IMPACTS TO THE COMMUNITY

To reduce impacts to residents and businesses in the area, mitigations are in place including:

- Air quality monitoring to track airborne emissions to ensure that construction activities don't impact the quality of the environment.
- Monitoring noise and vibration levels utilizing sound meters and real-time monitoring systems, to track and control noise and vibration emissions to help minimize disturbances to the community and ensure project regulations compliance; devices are placed on neighbouring buildings within the project zone of influence.
 - Devices generate real-time alerts to allow team to monitor, track and act if needed.
 - When it comes to vibration, devices monitor potential structural impact of vibrations; personal thresholds for perception of vibrations can vary.
- Continuous loop truck routes where possible, reducing need for trucks to reverse using back-up alarms.
- Water for dust suppression, including street sweepers, wheel cleaning and mud mats to ensure soil and sediment is kept off city streets and sidewalks.
- Paving of frequently used areas to minimize the amount of loose soil that can be disturbed by vehicle traffic, where possible.



Street sweeper



Mud mat

Construction Look-Ahead

Timing	Activity	Location	Details & Purpose
Summer 2024	University Avenue Realignment Work + TTC staircase demolition	North site / Median	Realignment of University Avenue (completed); following realignment, demolition of the former TTC staircase at the Northeast corner of University Avenue and Queen Street West.
Summer - Fall 2024	Ground Monitoring Point Installations + Investigations	Various	Additional ground monitoring devices installed at multiple sites throughout the Osgoode neighbourhood; work expected late spring to Fall 2024; more information to be shared as work is confirmed.
Summer - Fall 2024	Excavation Preparations (Crane installation, acoustic shelter)	South site	Installation of crane for excavation and structure to mitigate the impacts of noise, dirt, dust from the construction sites.
Fall 2024	Piling	North site	Install foundations to support future excavation of site.
Fall 2024 - Winter 2024	Excavation	South site	Initiate excavation of shaft to the station level, to provide connection with future station platforms.

**All construction timelines estimated and subject to change.*

Community Artwork

We want to hear from you!

- In fair practice across the south civils alignment of the seven (7) stations of the Ontario Line, community consultation for the artwork panels is underway.
- The community's voice will influence the selected artwork for identified site panels.
- Artwork will appear alongside Ontario Line signage for the project.
- Feedback will be collected through engagement with the community via an online survey.
- **To access the survey, scan the QR code or access via [this link](#).**



Reply by August 23rd

Discussion

Community Engagement

Community Engagement

Staying connected during construction.

Monthly public meetings

- Regular committee meetings to discuss upcoming works and share information.
- Next meeting scheduled September 25, 2024 - format to be announced.

In-person and virtual consultation with residences and businesses

- Our door is open: share any feedback and concerns with us.

Construction notices and updates

- Prepared and distributed prior to new / impactful construction works; contact us to be added to the distribution list.

News, progress and information shared in the Ontario Line newsletter

- Sign up for regular updates and information



QR code to our Ontario Line newsletter

Community Engagement

Metrolinx will keep the community, residents and businesses informed by providing project updates, seeking input and feedback, while addressing questions and concerns effectively and quickly.

Connect with us:

- Julia Orsini, Community Engagement Advisor
- Ross Andersen, Senior Advisor, Community Engagement

✉ Email OntarioLine@metrolinx.com

☎ Telephone 24/7 @ 416-202-5100

📣 Ontario Line e-newsletter @ [Metrolinx.com/OntarioLine](https://www.metrolinx.com/OntarioLine)

Follow us on social media:

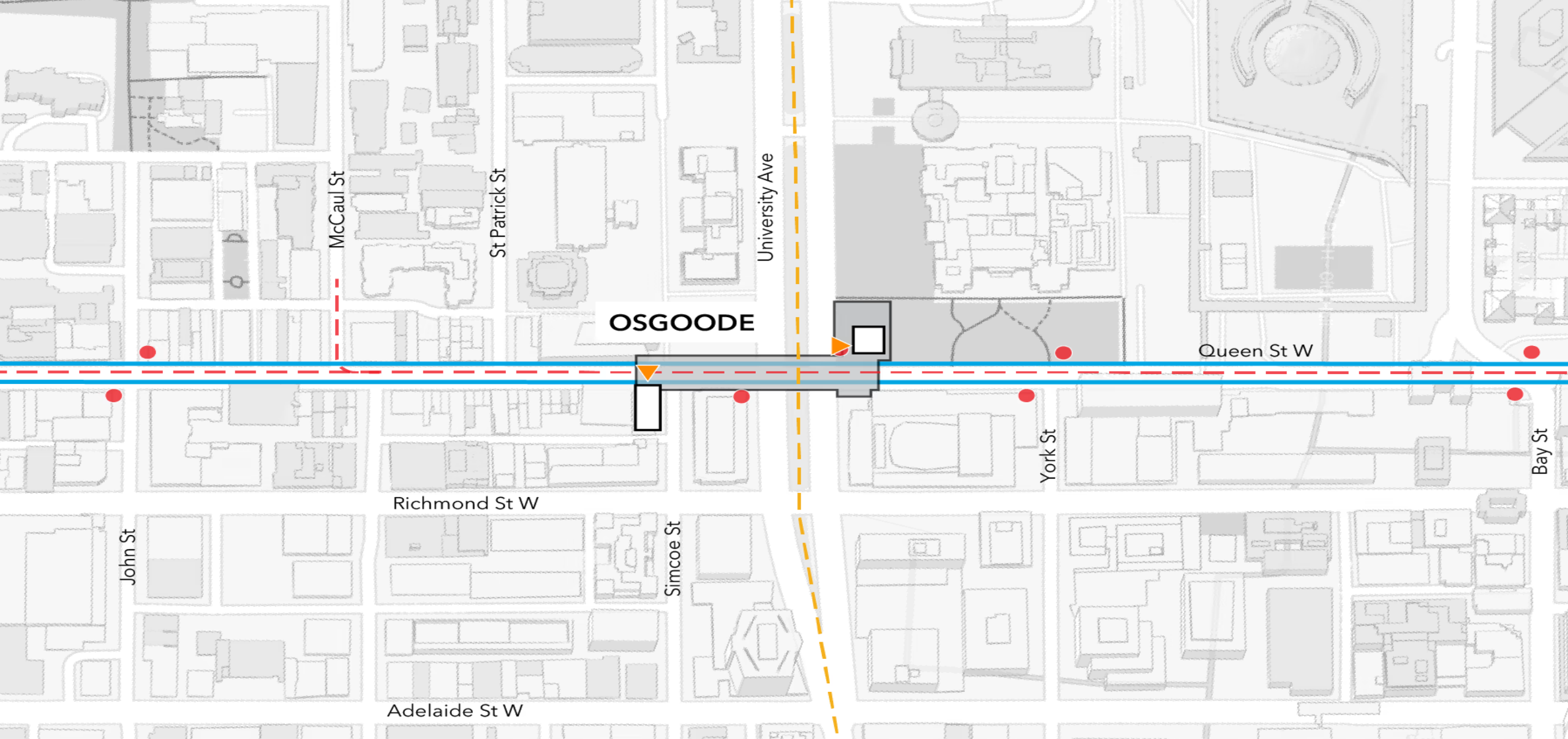
🌐 Twitter / Facebook / Instagram @OntarioLine



Our Community Office at 770 Queen Street East, which is the closest office to the Osgoode Station.



Appendix



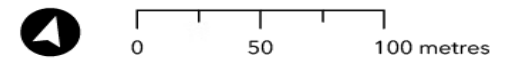
Osgoode Station

- Tunnelled
- - - Line 1 Yonge-University
- - - Streetcar Line

- Streetcar Stop
- ▲ Station Entrance

- Station Building
- Underground Station Area

Note: Heritage attributes will be conserved where possible.





OSGOODE

ELEVATORS

Osgoode

Artist's rendering – subject to change



Artist's rendering – subject to change



View of platform in future Osgoode Ontario Line station – Note: Initial concept rendering. Designs - including finishings, signage, and accessibility features - to be informed by further planning and consultation.