

# UPDATE: Pile drilling at Osgoode Station sites

**Expected start date:** As early as May 1, 2024

**Timing:**

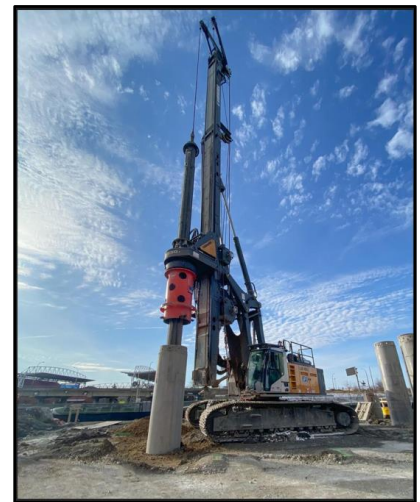
- **South site:** Weekdays from 7:00 a.m. to 7:00 p.m.\*
- **North site:** Overnight from 7:00 p.m. to 7:00 a.m.\*

\* Some weekend work and additional work hours may be required on both sites. Crews are expected to be on-site prior to their start time to set up equipment. \*

**Expected duration:** Late fall 2024

## What is piling?

- Crews will be drilling to install structural walls – also known as secant pile walls – to support the underground excavation of the Ontario Line at the future Osgoode station.
- A secant pile wall is a type of retaining wall used to secure the soil and ensure water tightness prior to excavation.
- The process consists of drilling a series of holes and filling them with concrete to create overlapping (secant) piles that form a continuous structural wall.
- Some of the piles are further reinforced with steel beams.
- This work is performed prior to excavation to prevent ground settlement.

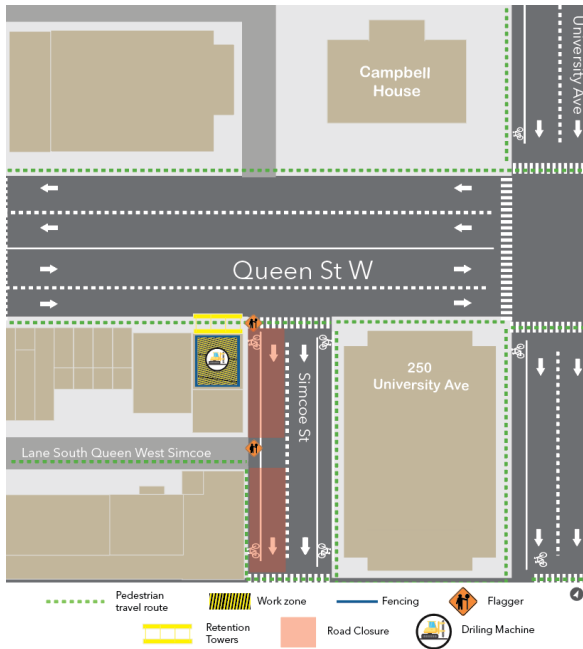


## What to expect

- Work at the future South station entrance is expected to take place weekdays between 7:00 a.m. and 7:00 p.m. starting in early May 2024. Some weekend work may be required.
- **UPDATE: Beginning late August 2024, North station entrance work will take place weekdays between 7:00 p.m. and 7:00 a.m. Some weekend work may be required.**
- Additional work hours may be required to allow teams to complete consecutive works, such as a concrete pour in progress.
- Crews are expected to be on-site prior to starting work in order to set up equipment.
- Noise from equipment drilling piles, removing spoils and concrete work is expected.
- Neighbours will see drilling machines, cranes, excavators, concrete pumps, and concrete trucks on-site during this phase of work.
- Several trucks will be entering and leaving worksites daily, following a specified route.
- To reduce impacts to residents and businesses in the area, mitigations are in place including noise and vibration monitoring and site hoarding.

- Work may be postponed or rescheduled due to unforeseen circumstances.

**Future South station entrance**  
(May 2024 - October 2024)



**Future North station entrance**  
(July 2024 - Late fall 2024)



## About the Ontario Line

- 15.6-kilometre subway line that will make it faster and easier to travel within Toronto and beyond.
- 15 stops and more than 40 connections to other transit, including GO train, subway, LRT, streetcar, and bus lines.
- Less than 30 minutes from one end of the line to the other.
- 28,000 fewer cars on the road each day.

### Contact us:

Call us 24/7 a: [416-202-5100](tel:416-202-5100)

Write to us at: [ontarioline@metrolinx.com](mailto:ontarioline@metrolinx.com)

Find us on X, Facebook, and Instagram: [@ontarioline](#)

Visit the website: [www.metrolinx.com/ontarioline](http://www.metrolinx.com/ontarioline)

### Visit our community office:

770 Queen Street East (near Queen & Broadview)

General hours:

- Mondays, Tuesdays, and Fridays: 9:00 a.m. to 5:00 p.m.
- Wednesdays and Thursdays: 10:00 a.m. to 6:00 p.m.

Disponible en français sur demande. Si vous êtes intéressé, veuillez envoyer un courriel à [ontarioline@metrolinx.com](mailto:ontarioline@metrolinx.com).