

UPDATED: Start of excavation at King-Bathurst north site

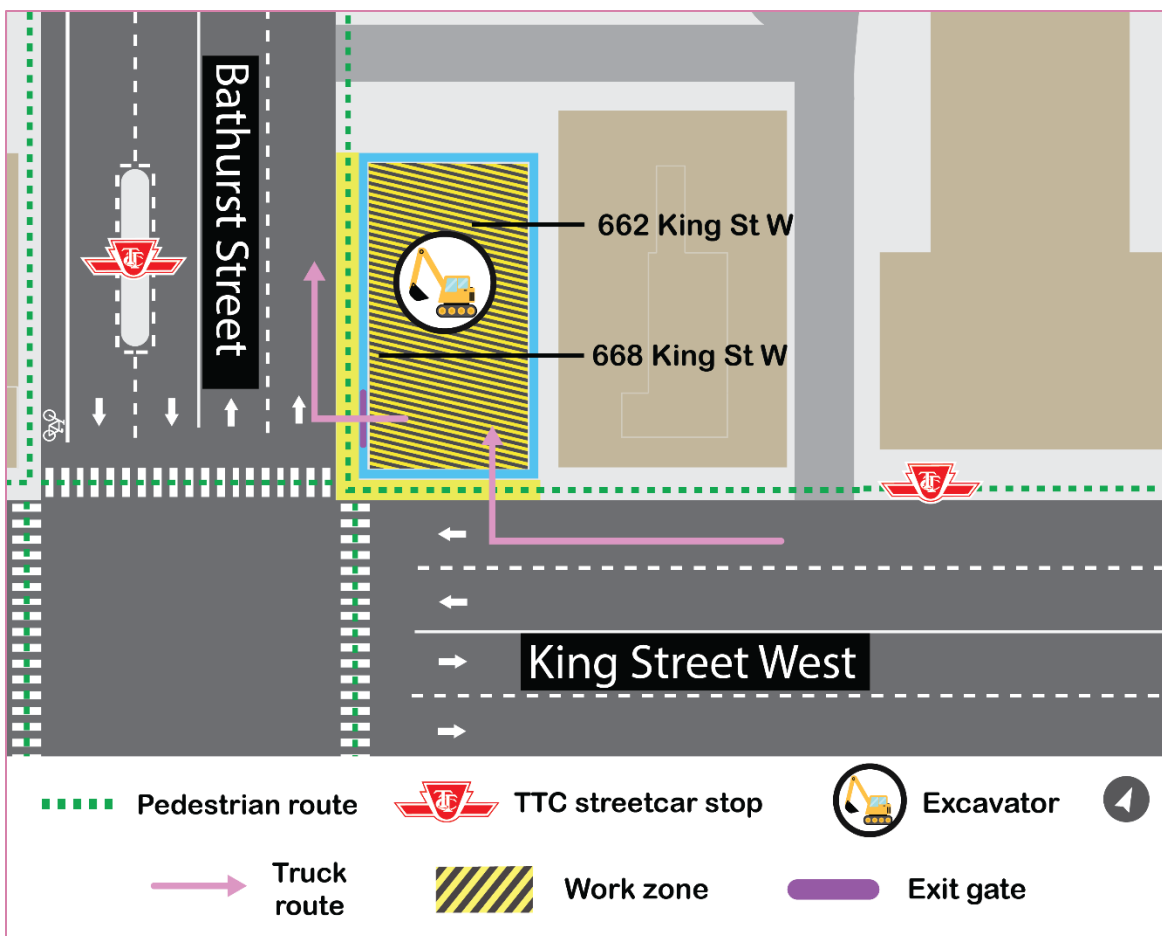
Expected start date: As early as September 23, 2024

Duration: This phase of excavation will continue through December 2024

Hours of work: Monday through Sunday, 24 hours a day

- Multiple crews will carry out different pieces of the work to advance excavation within the new acoustic shelter.

Map of King-Bathurst North Site Work Area



What is happening?

- A new acoustic shelter has been completed on the northeast corner of the King-Bathurst intersection. The structure will reduce noise and disruption and minimize dirt and dust from the work site. It will also allow crews to work without being affected by the weather.

The excavation process at the King-Bathurst north site will begin as early as September 23, 2024.

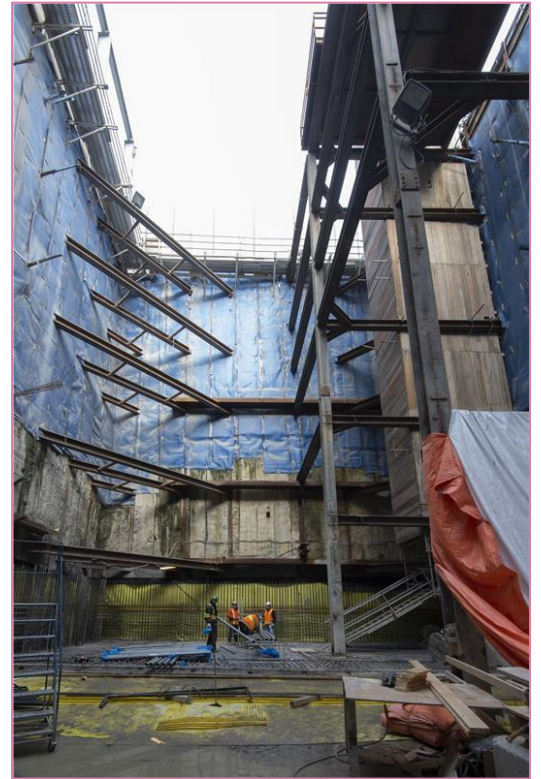
- Excavation work will occur 24 hours a day, 7 days a week, entirely within the acoustic shelter.

What is excavation?

- To create the future Ontario Line King-Bathurst station cavern, work crews will begin excavating soil and bedrock to a depth of 40 metres, where the station platform will eventually connect to the subway tunnel.
- As spoils are removed, a shaft will be created to lower materials into the pit for the future Ontario Line station.
- There will be construction noise from the use of excavators and loaders for the removal of spoils.

What to expect

- Excavation efforts will occur around the clock (24 hours a day, 7 days a week) at the King-Bathurst north site, within the acoustic shelter.
- The work has been sequenced to minimize noise in the overnight period.
- Residents will see dump trucks entering and exiting the site during this phase of work. Loaders and an overhead crane will support the excavation operations, from within the north site acoustic shelter.
- To reduce impacts to residents and businesses in the area, mitigations are in place including air quality, noise and vibration monitoring, site hoarding, additional paved areas, sprinkler systems, and mud mats for dust suppression.
- Traffic control persons will be used to safely guide vehicles in and out of the site as needed.



Example of an excavated shaft, similar to work that will occur at King-Bathurst

About the Ontario Line

- 15.6-kilometre subway line that will make it faster and easier to travel within Toronto and beyond.
- 15 stops and more than 40 connections to other transit, including GO train, subway, LRT, streetcar, and bus lines.
- Less than 30 minutes from one end of the line to the other.
- 28,000 fewer cars on the road each day.
- For more information about upcoming station work please see [metrolinx.com/Ontarioline](https://www.metrolinx.com/Ontarioline) or sign up for the e-newsletter.



King-Bathurst north site acoustic shelter, where excavation work will occur.

Contact us:

Call us 24/7 at: [416-202-5100](tel:416-202-5100)

Write to us at: ontarioline@metrolinx.com

Find us on X, Facebook, and Instagram:

[@ontarioline](https://www.instagram.com/ontarioline)

Visit the website:

www.metrolinx.com/ontarioline

Visit our community offices:

770 Queen Street East (near Queen & Broadview)

General hours:

Mondays, Tuesdays, and Fridays: 9:00 a.m. to 5:00 p.m.

Wednesdays and Thursdays: 10:00 a.m. to 6:00 p.m.

Thornccliffe Park:

East York Town Centre

45 Overlea Blvd., Toronto, ON M4H 1C3

Unit 153 (across from the Rogers store)

General hours:

Monday – Friday, 9 a.m. – 5 p.m.

Disponible en français sur demande. Si vous êtes intéressé, veuillez envoyer un courriel à OntarioLine@metrolinx.com