

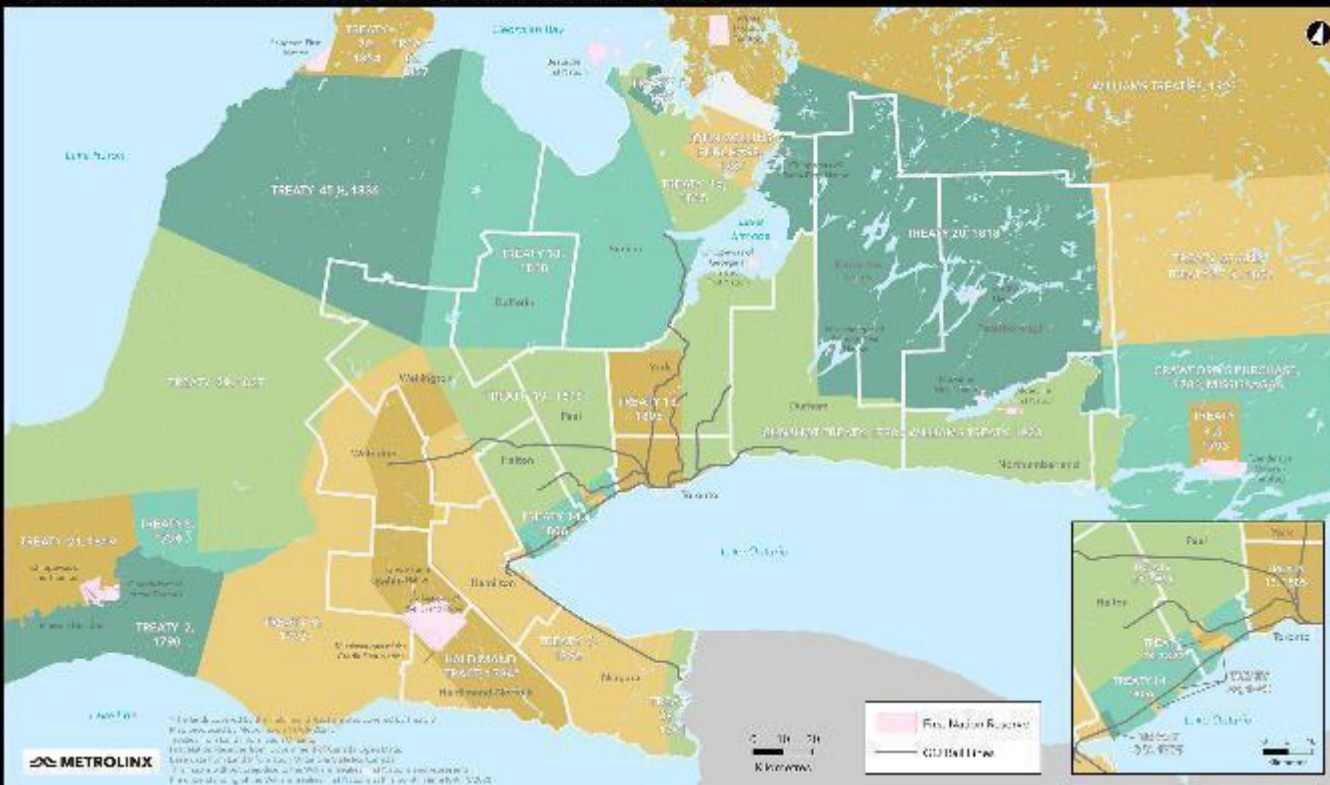


**The Ontario Line  
Lakeshore East Joint Corridor  
Early Works  
Construction Liaison Committee**

**September 19, 2024**

# LAND ACKNOWLEDGMENT

Treaties and Reserves in the Greater Golden Horseshoe



Let us take a moment to acknowledge we are on lands that have been, and continue to be, home to many Indigenous Peoples including the Anishinaabeg, the Haudenosaunee and the Huron-Wendat peoples.

We are all Treaty people. Many of us have come here as settlers, as immigrants or involuntarily as part of the trans-Atlantic slave trade, in this generation, or generations past.

We acknowledge the historic and continued impacts of colonization and the need to work towards meaningful reconciliation with the original caretakers of this land.

We acknowledge that Metrolinx operates on territories and lands covered by many treaties that affirm and value the rights of Indigenous communities, Nations and Peoples.

We understand the importance of working towards reconciliation with the original caretakers of this land. At Metrolinx, we will conduct business in a manner that is built on a foundation of trust, respect and collaboration.

# Agenda

## 1. Welcome:

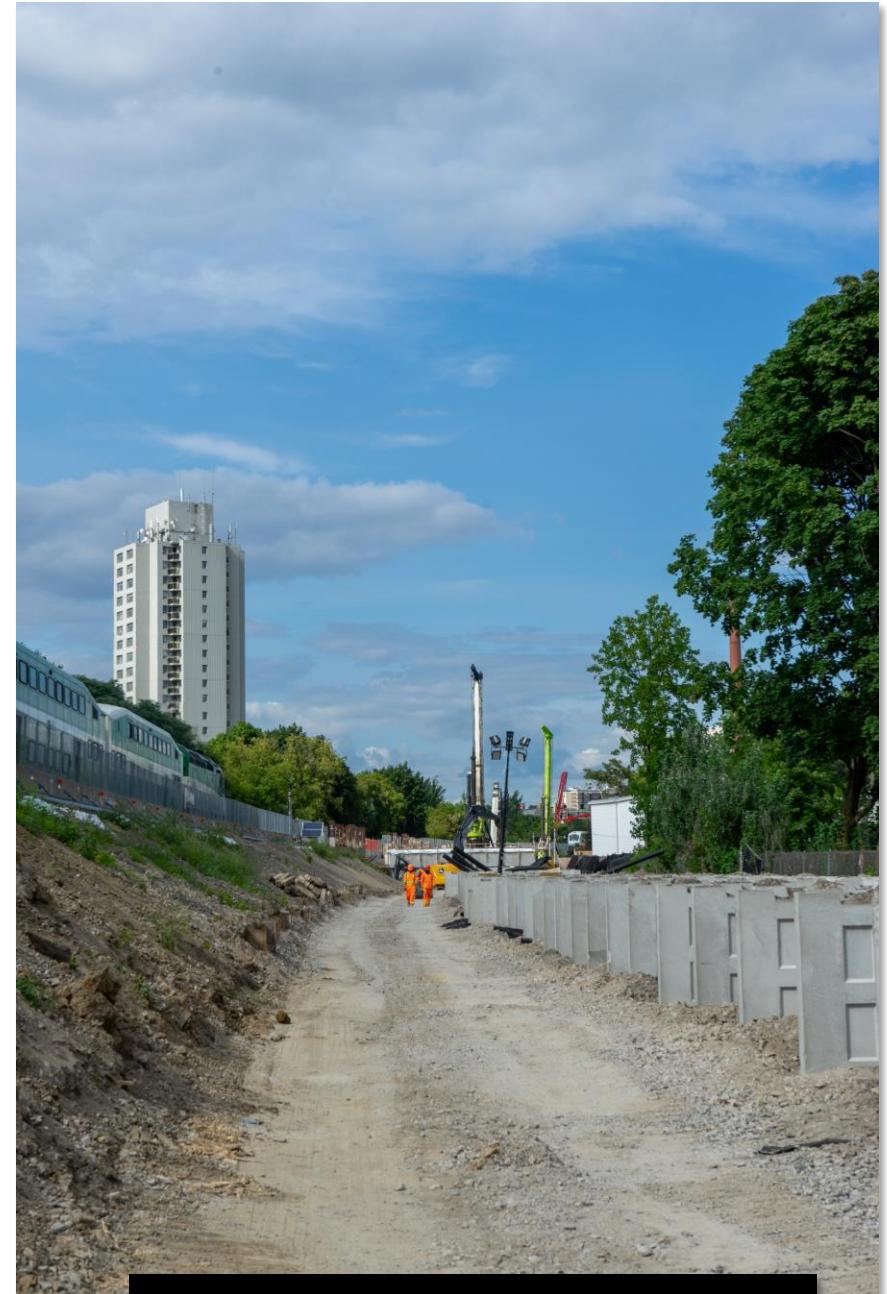
- Land Acknowledgement
- Safety Moment
- Action Items
- Complaints and Issues Tracker

## 2. Noise and Vibration Update - August 2024

## 3. Construction Updates

- Completed works
- Bridges update
- In-corridor work
- Lookahead - 2024
- Eastern Avenue bridge

## 4. Discussion/Next CLC



August 21, 2024  
Retaining wall work

## Safety Moment - Back to school

### With school back in session, look out for students

- Students of all ages are walking, biking, taking transit, or getting a ride to school
- When driving, slow down and be extra aware around school zones and during drop-off/pick-up times
- Never pass school busses and streetcars that are loading and unloading passengers
- When on transit, be aware of students who may be more susceptible to getting lost or harassment. If needed, offer assistance or speak to a staff member who can assist.



## August CLC Action Items - Completed

#	Action	Response	Status
5	Metrolinx will update action item #6 in the July-May CLC Pending Action Items list to reflect that it is an ongoing item.	Metrolinx has updated the action to pending.	<b>Completed</b>
6	Metrolinx will address and respond to complaint #11 regarding street maintenance and cleaning on the north side of Queen Street, as well as the tagged fence filter cloth.	Dufferin has completed both actions.	<b>Completed</b>
7	Metrolinx will address and resolve additional complaint raised regarding the tagging of the construction office on Degrassi Street, under the bridge on the north side of Queen Street.	Metrolinx flagged the complaint to Dufferin and the graffiti has since been removed.	<b>Completed</b>
10	Metrolinx will correct the error in the access road map regarding access road #13.	Metrolinx has corrected the error.	<b>Completed</b>
14	Metrolinx to ensure that no work will occur during the December and January statutory holidays.	Dufferin has confirmed no work will take place during the December and January statutory holidays.	<b>Completed</b>

## August CLC Action Items - Completed

#	Action	Response	Status
15	Metrolinx will communicate with East Harbour to gain more information regarding timing and interest in CLC participation and will update the group.	Metrolinx received an update from the East Harbour project that the CLC has been delayed and informed the team that members of LSE CAC want to take part.	<b>Completed</b>
16	Metrolinx to add cross street locations to all noise/vibration complaints.	Cross street locations have been added to noise/vibration complaints, where relevant.	<b>Completed</b>

## July CLC Action Items - Completed

#	Action	Response	Status
1	Metrolinx will discuss the Arborist Report with the City and, if given, provide an update to the CLC members before the next CLC.	Metrolinx recently received the arborist report and will provide an update on tree removals to the CLC membership this month.	<b>Completed</b>
2	Metrolinx to coordinate with IO to determine presence at future meetings.	IO will attend CLC meetings when TOC is an agenda item.	<b>Completed</b>

## August CLC Action Items - Pending

#	Action	Response	Status
1	Metrolinx will discuss the complaint regarding the format and process of CLC summaries with LSE CAC offline.	Metrolinx has spoken to LSE CAC about the CLC summary format with LSE CAC.	<b>Pending</b>
2	Metrolinx to confirm the location of the hoarding on the west side of the corridor and update the group.	Metrolinx and Dufferin are coordinating where the hoarding locations on the west side of the corridor will be and will update the CLC membership accordingly.	<b>Pending</b>
3	Metrolinx will coordinate with IO offline to inquire about their availability to attend future CLC meetings.	Metrolinx continuing to discuss the IO attendance at CLC meetings.	<b>Pending</b>
4	Metrolinx will organize a walk with T.W. and the project team to identify the trees being removed at the First Avenue condo development area, after the City comments on the arborist report are reviewed.	The arborist report is still under review. Once the final arborist report is available, Metrolinx will schedule a meeting with T.W.	<b>Pending</b>
8	Metrolinx will inform the community when start times are shifted and the contractor needs to shift to an earlier morning start time for safety purposes.	Metrolinx continues to provide weekly construction updates to the community and is working closely with Dufferin Construction to ensure work schedules are as accurate as possible.	<b>Pending</b>



## August CLC Action Items - Pending

#	Action	Response	Status
9	Metrolinx will explore possible renders or visual aids to showcase the access walls and fencing locations on the west-sides new access roads.	Metrolinx is working on the visual aids to showcase the access road locations and will have them available at the October CLC.	<b>Pending</b>
11	Metrolinx will provide more information regarding the timelines associated with the temporary Dog Off-Leash Area (DOLA) at the next CLC meeting and where it is being relocated.	Metrolinx and the City are having ongoing discussions about timelines around the temporary DOLA.	<b>Pending</b>
13	Metrolinx will update local businesses and the BIA about the expected work and mitigations for the west-side flip.	Metrolinx will continue to update the BIA during bi-weekly check ins and update the local- business when schedules are confirmed. Metrolinx is beginning to update local business most impacted by construction on the west side about what to expect.	<b>Pending</b>

## July-May CLC Action Items - Pending

#	Action	Response	Status
1	Metrolinx will add the term translucent, instead of transparent, to the materials in the drawing of the retaining wall and noise barrier heights along the rail corridor around First Ave.	Metrolinx will add the term when drawing is re-sent.	<b>Pending</b>
3	Metrolinx to explore opportunities for artwork, banners, murals on the west side of the rail corridor.	Metrolinx is continuing to explore hoarding artwork ideas on the west side of the corridor and will continue to keep the CLC membership updated.	<b>Pending</b>
4	Metrolinx to confirm if the BIA mural can be stored at the Thackeray yard.	Metrolinx is continuing to investigate hoarding plans for the north side of the rail corridor to confirm if there is a feasible location to install the BIA mural. Metrolinx will continue to keep the Riverside BIA informed on possible options.	<b>Pending</b>
5	Metrolinx to confirm restoration plans for the Degrossi historical plaque.	Metrolinx is coordinating restoration plans with Heritage Toronto and will keep the CLC members updated.	<b>Pending</b>
6	Metrolinx to provide Riverside BIA with list of impacted assets.	Metrolinx having ongoing conversations with Riverside BIA to finalize asset list.	<b>Pending</b>

## July-May CLC Action Items - Pending

#	Action	Response	Status
7	<b>May:</b> Metrolinx will follow up with a discussion on community involvement on the work schedule for the west side of the corridor.	Discussions about the construction schedule on the west side of the corridor have not started. Metrolinx will reach out to the Community once these conversations are initiated.	<b>Pending</b>
8	<b>May:</b> Metrolinx and Dufferin Construction to share details on the First Ave signal Bridge, once the design process is complete.	The First Ave signal bridge is still in the design stages. An update will be provided to the CLC membership when details are confirmed.	<b>Pending</b>
10	Metrolinx will review the inventory of BIA assets in the public right of way and add it to the list of pending action items.	Metrolinx has added Riverside BIA assets to the pending action items.	<b>Pending</b>

# Complaints and Issues Tracker

#	Complaint / Issue	Resolution
1	<b>Vibration</b> <ul style="list-style-type: none"> <li>McGee Street</li> <li>August 14, 2024</li> </ul>	<ul style="list-style-type: none"> <li>Complaint received vibration.</li> <li><b>Action:</b> Metrolinx Community Engagement responded to the resident and confirmed that the vibrations were related to compaction work for the retaining walls. The Contractor reviewed vibration data and confirmed levels were within safe limits.</li> </ul>
2	<b>Parking</b> <ul style="list-style-type: none"> <li>Dundas Bridge/Logan Ave</li> <li>August 19, 2024</li> </ul>	<ul style="list-style-type: none"> <li>Complaint received about crews parking on street.</li> <li><b>Action:</b> The Contractor reminded crews to park at lot at 10 Dickens St. Contractor removed vehicles. Metrolinx responded to the resident and provided these details.</li> </ul>
3	<b>Parking</b> <ul style="list-style-type: none"> <li>Queen Bridge</li> <li>August 20, 2024</li> </ul>	<ul style="list-style-type: none"> <li>Complaint received about street sweeper parking on street.</li> <li><b>Action:</b> The Contractor reminded crews to not park on the street and Metrolinx responded to the resident to let them know.</li> </ul>
4	<b>Graffiti</b> <ul style="list-style-type: none"> <li>Queen Bridge</li> <li>August 20, 2024</li> </ul>	<ul style="list-style-type: none"> <li>Complaint received about graffiti on Queen Bridge</li> <li><b>Action:</b> The Contractor will remove the graffiti.</li> </ul>
5	<b>Graffiti</b> <ul style="list-style-type: none"> <li>Galt Ave.</li> <li>August 20, 2024</li> </ul>	<ul style="list-style-type: none"> <li>Complaint received about graffiti on noise barriers around Gerrard-Jones.</li> <li><b>Action:</b> Metrolinx will arrange for the graffiti to be removed.</li> </ul>
6-7	<b>Vibration</b> <ul style="list-style-type: none"> <li>Dundas Bridge (Booth/Paisley area)</li> <li>August 26, 2024</li> </ul>	<ul style="list-style-type: none"> <li>Two complaints received about vibration.</li> <li><b>Action:</b> Metrolinx followed up with the resident and confirmed that vibration was related to adjusting the access ramp at the Dundas St. E. access road. The Contractor reviewed vibration data and confirmed that levels were within the Project's performance limits.</li> </ul>
8	<b>Lane closure</b> <ul style="list-style-type: none"> <li>Logan Bridge</li> <li>August 26, 2024</li> </ul>	<ul style="list-style-type: none"> <li>Complaint received about closure of traffic lane on Logan Ave.</li> <li><b>Action:</b> Lane closure was short-term and was removed after the work was completed.</li> </ul>

# Complaints and Issues Tracker

#	Complaint / Issue	Resolution
9	<b>Vibration</b> <ul style="list-style-type: none"> <li>Dundas Bridge (Booth/Paisley area)</li> <li>August 27, 2024</li> </ul>	<ul style="list-style-type: none"> <li>Complaint received vibration.</li> <li><b>Action:</b> Metrolinx responded to the resident and explained that the vibration was related to compaction work. The Contractor reviewed vibration data and confirmed that vibration levels were within safe limits.</li> </ul>
10	<b>Noise</b> <ul style="list-style-type: none"> <li>Logan Ave. and Dundas St. E.</li> <li>August 27, 2024</li> </ul>	<ul style="list-style-type: none"> <li>Complaint received about noise levels from crews in early morning.</li> <li><b>Action:</b> The Contractor had a discussion with foreman to be mindful of noise and neighbours.</li> </ul>
11	<b>Generator</b> <ul style="list-style-type: none"> <li>Queen Bridge (west side)</li> <li>August 28, 2024</li> </ul>	<ul style="list-style-type: none"> <li>Complaint received about smell of fumes.</li> <li><b>Action:</b> The Contractor sent a technician to assess the generator on site. The technician confirmed the generator was operating properly and there were no additional fumes being produced. The Contractor also reviewed air quality monitors and confirmed there were no exceedances. Metrolinx responded to the resident with this information.</li> </ul>
12	<b>Leaf blower</b> <ul style="list-style-type: none"> <li>Queen Bridge</li> <li>August 28, 2024</li> </ul>	<ul style="list-style-type: none"> <li>Complaint received about person using leaf blower to clean laneway near work site</li> <li><b>Action:</b> Metrolinx confirmed that the individual is not related to Metrolinx work. Metrolinx shared this information with the resident.</li> </ul>
13	<b>Vibration</b> <ul style="list-style-type: none"> <li>Dundas Bridge (Booth/Paisley area)</li> <li>August 28, 2024</li> </ul>	<ul style="list-style-type: none"> <li>Complaint received about vibration.</li> <li><b>Action:</b> : Metrolinx followed up with the resident and confirmed that the Contractor was on site actively monitoring vibration levels during the time of the complaint and levels were within the Project's performance limits. Where possible, crews used a smaller roller to complete the compaction work.</li> </ul>
14	<b>Damage</b> <ul style="list-style-type: none"> <li>Queen St and McGee St</li> <li>August 30, 2024</li> </ul>	<ul style="list-style-type: none"> <li>Complaint received about damaged outdoor planter.</li> <li><b>Action:</b> The Contractor investigated and concluded that there were no vehicles at the time that would have damaged the planter. Regardless, Metrolinx has offered to repair/replace the planter for the resident.</li> </ul>
15	<b>Vibration</b> <ul style="list-style-type: none"> <li>De Grassi St</li> <li>August 30, 2024</li> </ul>	<ul style="list-style-type: none"> <li>Complaint received about vibration</li> <li><b>Action:</b> : Metrolinx followed up with the resident and confirmed the Contractor reviewed vibration data at nearest monitoring station and levels were within the Project's performance limits.</li> </ul>

# Complaints and Issues Tracker

#	Complaint / Issue	Resolution
16-18	<b>Vibration</b> <ul style="list-style-type: none"> <li>McGee St</li> <li>August 30, 2024</li> </ul>	<ul style="list-style-type: none"> <li>Multiple complaints received about construction machinery travelling on McGee St.</li> <li><b>Action:</b> The Contractor met with crews on site and instructed them to not travel on McGee St.</li> </ul>
19	<b>Vibration</b> <ul style="list-style-type: none"> <li>Dundas Bridge (Booth/Paisley area)</li> <li>September 7, 2024</li> </ul>	<ul style="list-style-type: none"> <li>Complaint received about vibration.</li> <li><b>Action:</b> Metrolinx followed up with the resident and confirmed that vibrations were related to compaction work. The Contractor reviewed vibration data and confirmed that vibration levels were within the Project's performance limits.</li> </ul>
20-26	<b>Vibration</b> <ul style="list-style-type: none"> <li>Dundas Bridge (Booth/Paisley area)</li> <li>September 8, 2024</li> </ul>	<ul style="list-style-type: none"> <li>Multiple complaints received about vibration.</li> <li><b>Action:</b> Metrolinx followed up with the resident and confirmed that vibration was due to backfilling activities for the retaining walls and vibration levels were within the Project's performance limits. The Contractor confirmed that a smaller compactor was being used to lessen vibrations.</li> </ul>
27	<b>Start time</b> <ul style="list-style-type: none"> <li>Dundas Bridge</li> <li>September 9, 2024</li> </ul>	<ul style="list-style-type: none"> <li>Complaint received about early work start time.</li> <li><b>Action:</b> Metrolinx followed up with the resident and confirmed work activities did not start before communicated times, but crews mobilized on site before. Compaction did not start until later.</li> </ul>
28	<b>Graffiti</b> <ul style="list-style-type: none"> <li>Queen Bridge</li> <li>September 11, 2024</li> </ul>	<ul style="list-style-type: none"> <li>Complaint received about graffiti on filter cloth.</li> <li><b>Action:</b> The Contractor will remove the graffiti.</li> </ul>
29	<b>Concrete on property</b> <ul style="list-style-type: none"> <li>Logan bridge</li> <li>September 12, 2024</li> </ul>	<ul style="list-style-type: none"> <li>Complaint received about concrete disposed under tree.</li> <li><b>Action:</b> Metrolinx followed up with the resident and confirmed the Contractor cleaned the concrete. The concrete was unrelated to the project.</li> </ul>
30	<b>Parking</b> <ul style="list-style-type: none"> <li>Dundas bridge</li> <li>September 13, 2024</li> </ul>	<ul style="list-style-type: none"> <li>Complaint received about trucks blocking bike lane and fire hydrant.</li> <li><b>Action:</b> Metrolinx followed up with the resident and confirmed the Contractor instructed trucks to move immediately.</li> </ul>
31	<b>Dust</b> <ul style="list-style-type: none"> <li>Eastern bridge</li> <li>September 13, 2024</li> </ul>	<ul style="list-style-type: none"> <li>Complaint received about dust from dirt piles on site.</li> <li><b>Action:</b> Metrolinx followed up with the resident and let them know the Contractor will increase the frequency of water sprays and attempt to cover the dirt piles with tarps.</li> </ul>

# Complaints and Issues Tracker

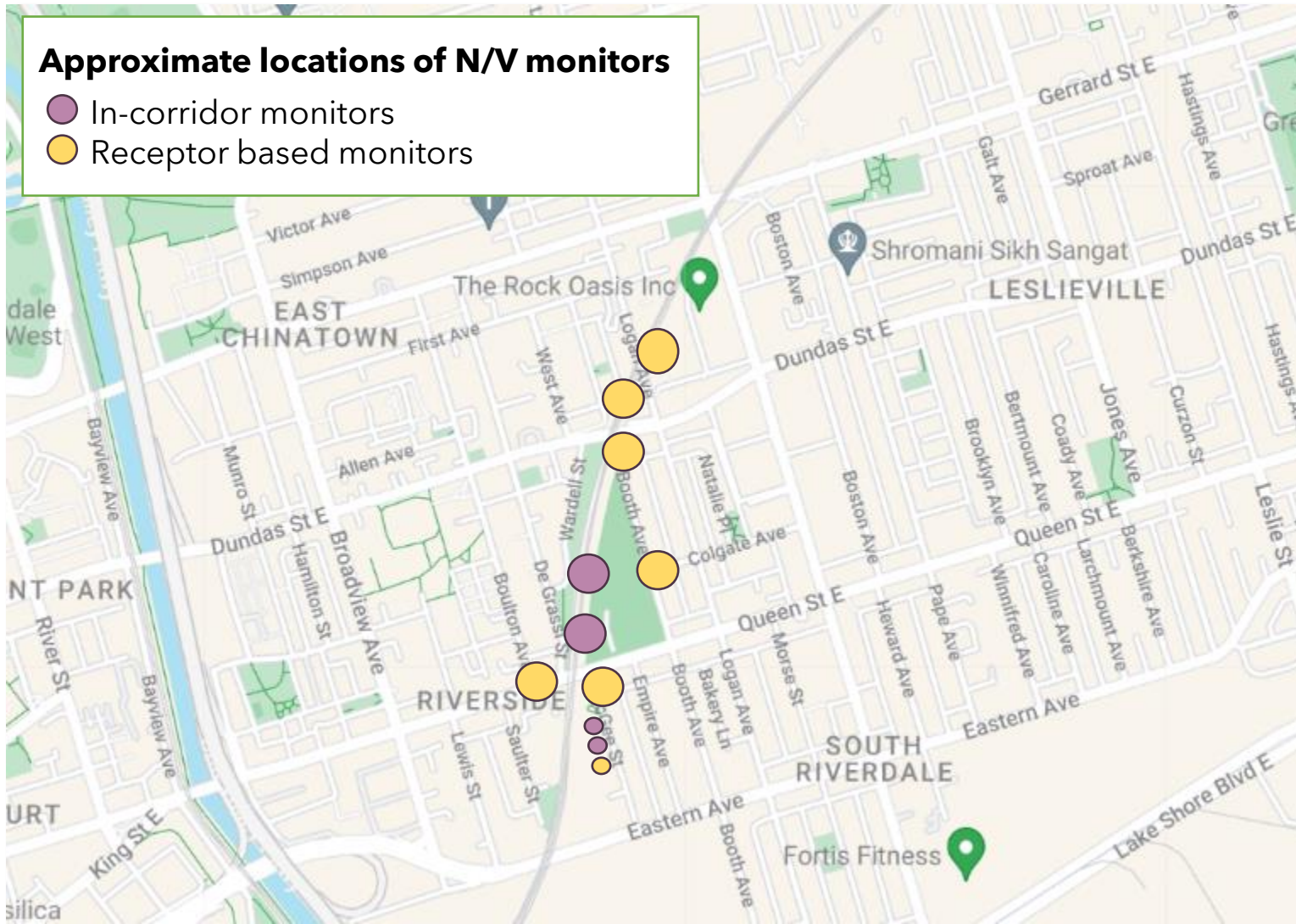
#	Complaint / Issue	Resolution
32	<b>Equipment on street</b> <ul style="list-style-type: none"> <li>Logan Ave</li> <li>September 16, 2024</li> </ul>	<ul style="list-style-type: none"> <li>Complaint received about equipment driving on Logan Ave.</li> <li><b>Action:</b> Contractor advised some vehicles were performing work on Logan Ave. and were required to drive on the road. Metrolinx followed up with the resident and let them know.</li> </ul>
33	<b>Worker behaviour</b> <ul style="list-style-type: none"> <li>Dundas Bridge</li> <li>September 17, 2024</li> </ul>	<ul style="list-style-type: none"> <li>Complaint received about worker at bridge harassing resident repeatedly.</li> <li><b>Action:</b> Metrolinx followed up with the resident and let them know the Contractor spoke to the worker and reviewed workplace harassment policies and emphasized importance of appropriate behavior towards members of the public. The worker will be relocated to another location.</li> </ul>
34-46	<b>Noise and vibration</b> <ul style="list-style-type: none"> <li>Queen and De Grassi, Booth and Paisley Ave</li> <li>September 17, 2024</li> </ul>	<ul style="list-style-type: none"> <li>Multiple complaints received about noise and vibration.</li> <li><b>Action:</b> Metrolinx followed up with the resident and confirmed that retaining wall activities were taking place adjacent to Jimmie Simpson Park and the levels were within the Project's performance limits. Metrolinx directed the Contractor to stop this work activity at 11pm.</li> </ul>
47	<b>Lighting</b> <ul style="list-style-type: none"> <li>Paisley Ave</li> <li>September 17, 2024</li> </ul>	<ul style="list-style-type: none"> <li>Complaint received about light from rail corridor directing into home</li> <li><b>Action:</b> Metrolinx followed up with the resident and let them know the Contractor adjusted the light to ensure it is not shining into any properties.</li> </ul>

# Noise and Vibration Update

## August 2024



# Noise and Vibration Monitoring Update - August 2024



- There are four noise and vibration monitoring instruments located within the rail corridor, and seven monitors located at adjacent residential receptors
- The noise and vibration monitor at Galt Avenue was relocated to Logan Avenue to provide better coverage, as most construction has been completed in the Galt Avenue area
- Most noise exceedances were observed on the weekends
- No noise and vibration complaints correlated with the August 2024 exceedances
- Noise and vibration limits are measured at the property boundary

• The summary above provides information on noise levels measured over 15-minute intervals (15-minute average).

## Registered Exceedances at Noise Receptor Locations: August 2024

No.	Date/Time of Exceedances	Detail	Location	Source	Corrective action	Complaint received (Y/N)
1.	August 10 - Early morning	Noise	Near the Dundas and Queen bridges	<ul style="list-style-type: none"> <li>Use of drill rig for piling work</li> <li>Excavator</li> </ul>	<ul style="list-style-type: none"> <li>Contractor investigated and confirmed exceedances were minor</li> <li>Contractor continued to monitor while works continued</li> </ul>	N
2.	August 12 - Late afternoon	Vibration	Near the Queen bridge	<ul style="list-style-type: none"> <li>Vibratory roller</li> </ul>	<ul style="list-style-type: none"> <li>Activity stopped and work assessed</li> <li>Contractor adjusted work methodology</li> </ul>	N
3.	August 17 - Nighttime	Noise	Near the Dundas, Queen, and Logan bridges	<ul style="list-style-type: none"> <li>Concrete trucks, drill, and hammer</li> </ul>	<ul style="list-style-type: none"> <li>Contractor investigated and confirmed exceedances were minor</li> <li>Contractor continued to monitor while works continued</li> </ul>	N
4.	August 22 - Daytime	Noise	Near the Queen bridge	<ul style="list-style-type: none"> <li>Using a lift</li> </ul>	<ul style="list-style-type: none"> <li>Contractor reviewed noise levels and no other exceedances were detected</li> </ul>	N
5.	August 24 - Night and early morning	Noise	Near the Dundas, Queen, and Logan bridges	<ul style="list-style-type: none"> <li>Tonal back up beeper, excavator, and drill rig</li> </ul>	<ul style="list-style-type: none"> <li>Contractor to use broadband back up beepers</li> <li>Contractor to adjust work schedule to limit night work</li> </ul>	N
6.	August 25 - Early morning	Noise	Near the Queen bridge	<ul style="list-style-type: none"> <li>Demolition activities</li> </ul>	<ul style="list-style-type: none"> <li>Contractor to start work later in the day</li> </ul>	N

- The above table provides information on noise levels measured over 15-minute intervals (15-minute average).
- Exceedances unrelated to Lakeshore East Joint Corridor construction are not reflected in this table.

## Registered Exceedances at Noise Receptor Locations: August 2024

No.	Date/Time of Exceedances	Detail	Location	Source	Corrective action	Complaint received (Y/N)
7.	August 27 - Daytime	Noise	Near Dundas and Logan bridges and Galt Ave	Sandblasting	<ul style="list-style-type: none"> <li>Exceedances were minimal - Contractor reviewed levels and confirmed no action was required.</li> <li>Contractor confirmed correct mitigation was in use</li> </ul>	N
8.	August 30 - Nighttime	Noise	Near the Queen bridge	<ul style="list-style-type: none"> <li>Use of a dozer</li> </ul>	<ul style="list-style-type: none"> <li>Contractor reviewed noise levels and did not detect any reoccurring exceedances</li> </ul>	N
9.	August 31 - Nighttime and early morning	Noise	Near the Dundas and Queen bridges	<ul style="list-style-type: none"> <li>Broadband back up alarm</li> <li>Truck activity</li> </ul>	<ul style="list-style-type: none"> <li>Exceedances were minimal - Contractor reviewed levels and confirmed no action was required.</li> <li>Correct mitigation was in use</li> </ul>	N

- The above table provides information on noise levels measured over 15-minute intervals (15-minute average).
- Exceedances unrelated to Lakeshore East Joint Corridor construction are not reflected in this table.

## Registered Exceedances at In-Corridor Noise Receptor Locations: August 2024

No.	Date/Time of Exceedances	Detail	Location	Source	Corrective action	Complaint received (Y/N)
1.	August 8 - Daytime	Noise	Near Queen bridge	<ul style="list-style-type: none"> <li>Dozer operating beside monitor</li> </ul>	<ul style="list-style-type: none"> <li>Lowered power on equipment</li> <li>Contractor reviewed and confirmed exceedance was due to equipment operating beside monitor</li> </ul>	N
2.	August 26 - Nighttime	Noise	Near Queen bridge	<ul style="list-style-type: none"> <li>Formwork installation</li> </ul>	<ul style="list-style-type: none"> <li>The Contractor review the noise levels and confirmed exceedances were minor</li> <li>No further exceedances were detected</li> </ul>	N
3.	August 28 - Nighttime	Noise	Near Queen bridge	<ul style="list-style-type: none"> <li>Formwork installation</li> </ul>	<ul style="list-style-type: none"> <li>The Contractor review the noise levels and confirmed exceedances were minor</li> <li>No further exceedances were detected</li> </ul>	N
4.	August 31 - Early morning	Noise	Near Queen bridge	<ul style="list-style-type: none"> <li>Crane moving rebar</li> </ul>	<ul style="list-style-type: none"> <li>Contractor to schedule activity later in the day</li> </ul>	N

- The above table provides information on noise levels measured over 15-minute intervals (15-minute average).
- Exceedances unrelated to Lakeshore East Joint Corridor construction are not reflected in this table.

# **Ontario Line Construction Update Lakeshore East Joint Corridor Early Works Construction**

# Construction Progress Update: Completed Works

**Retaining wall panel installation largely complete from Eastern to Dundas**



**Completed both abutments at the Queen Bridge**



**Completed demolition of Logan Bridge abutments**



**Completed formwork and rebar installation for the Dundas West abutment footing**



**Completed installation of the new sewer at Eastern Avenue**



**Bridge reconstruction:  
Queen St. E., Dundas St. E.,  
and Logan Ave.**

# Bridge Abutment Construction

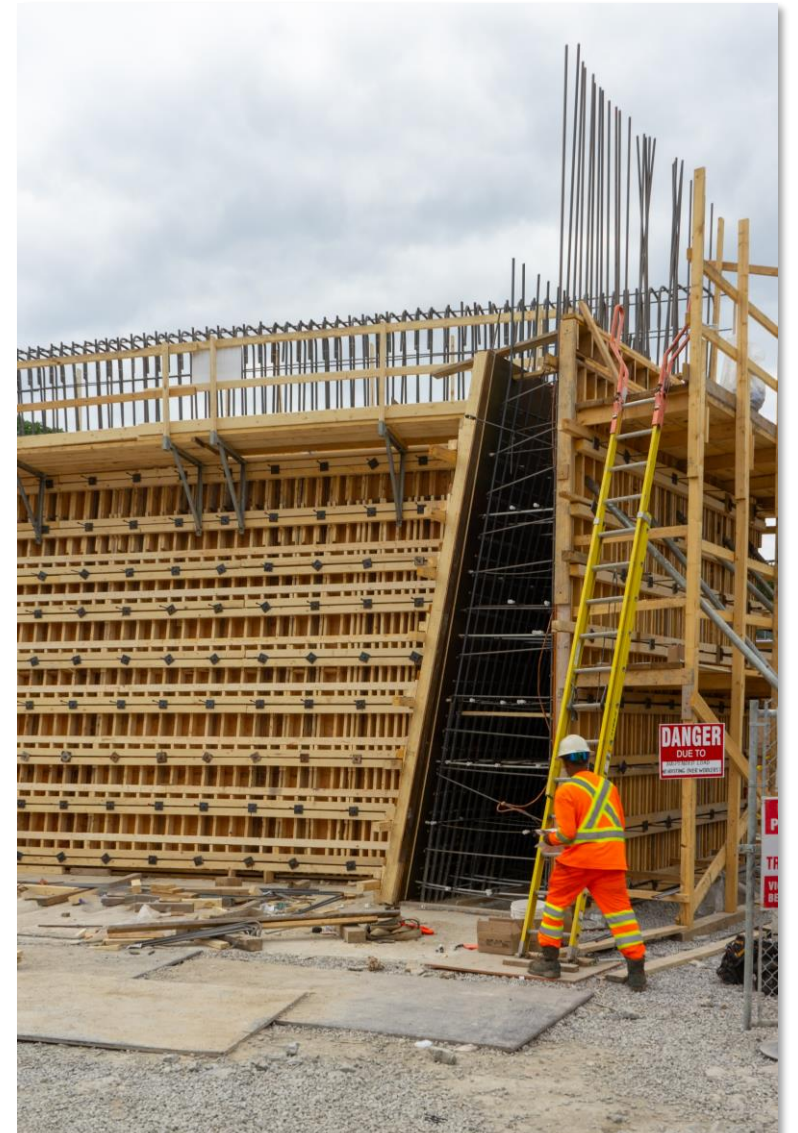
- With demolition work completed, the new bridge abutments are being built.
- Periodic traffic lane and sidewalk closures will be required; no road closures are expected.

## Start dates and duration:

- **Queen bridge:** Ongoing until end of September.
- **Dundas bridge:** Ongoing for approximately two months.
- **Logan bridge:** Ongoing for approximately three months.

## Hours of work:

- Monday - Friday, between 7 a.m. - 5 p.m. Periodically on Saturdays from 7 a.m. - 5 p.m.
- Periodic overnight work may be required to complete critical activities

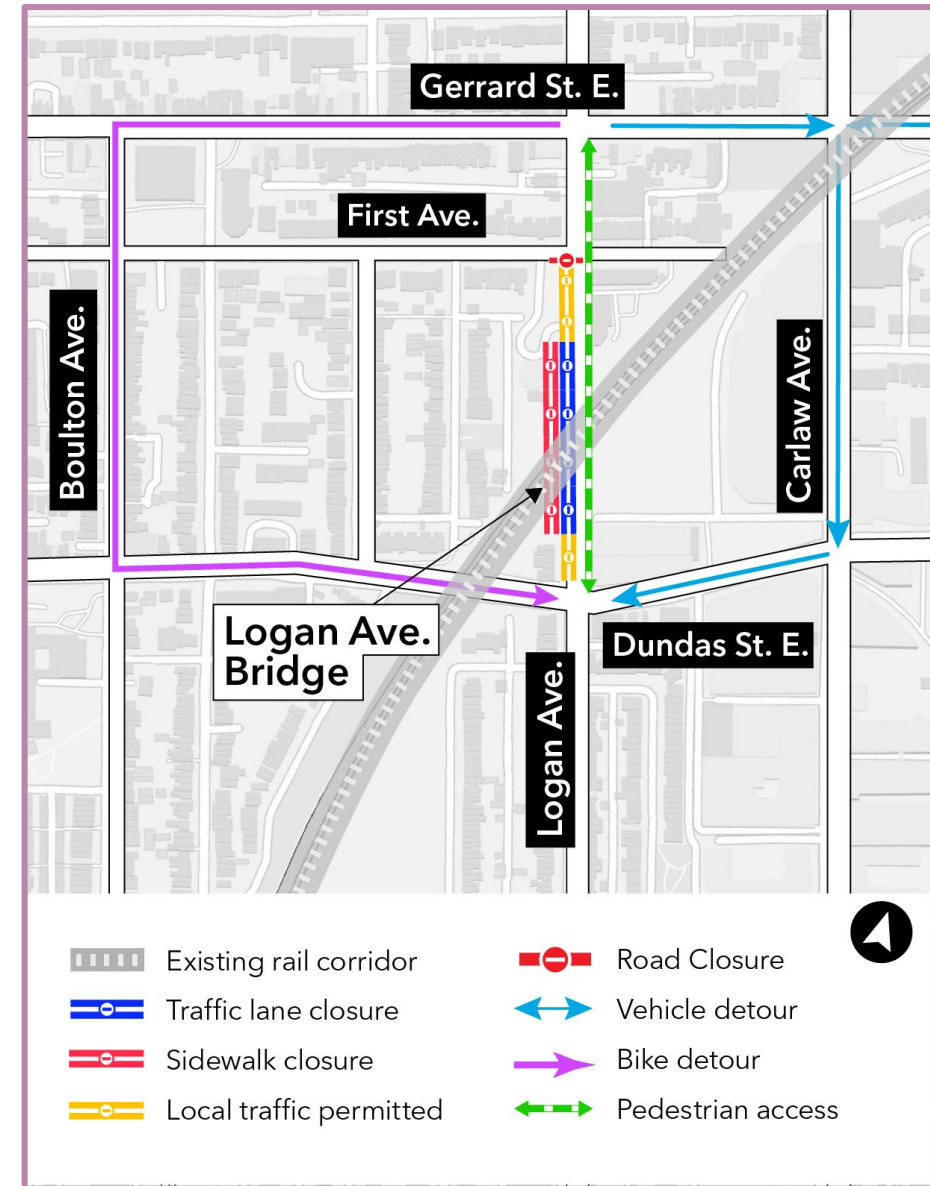
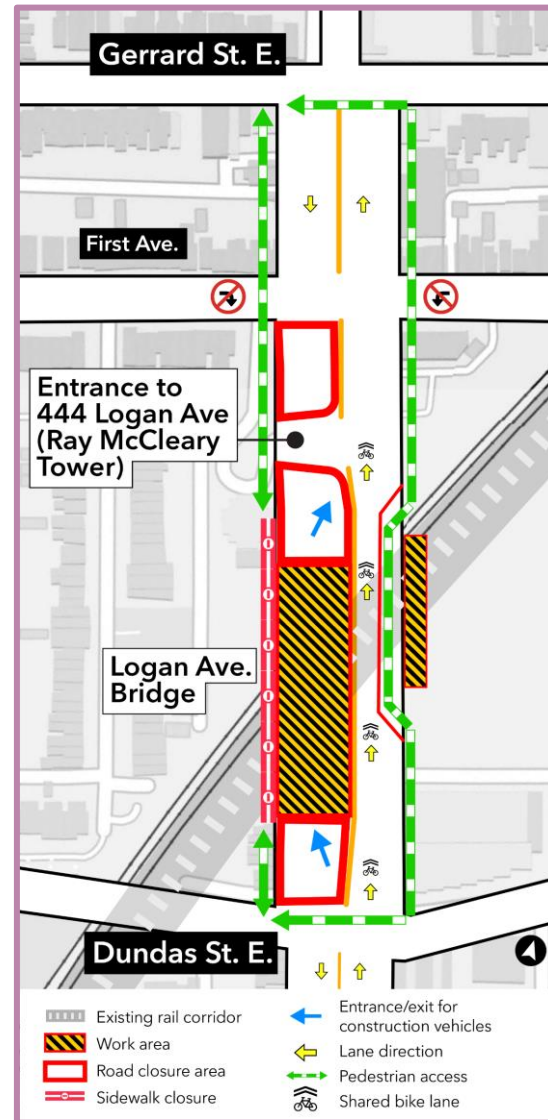


Forms and rebar for new abutment at Queen St. E.



# Logan Avenue Southbound Traffic Closure

- Logan Ave. is closed to southbound traffic between Dundas St. E. and First Ave. to complete pier and abutment construction at the Logan Ave. bridge
- The closure will remain in place for approximately six weeks
- The sidewalk on the west side of Logan Avenue will be closed under the Logan bridge between 400 Logan Avenue and 444 Logan Avenue.
- These traffic and sidewalk closures will accelerate work and shorten the length of bridge construction by ten weeks. Vehicles will be diverted to Carlaw Ave.
- Work will take place Monday - Saturday from 7 a.m. - 5 p.m. and periodically at night

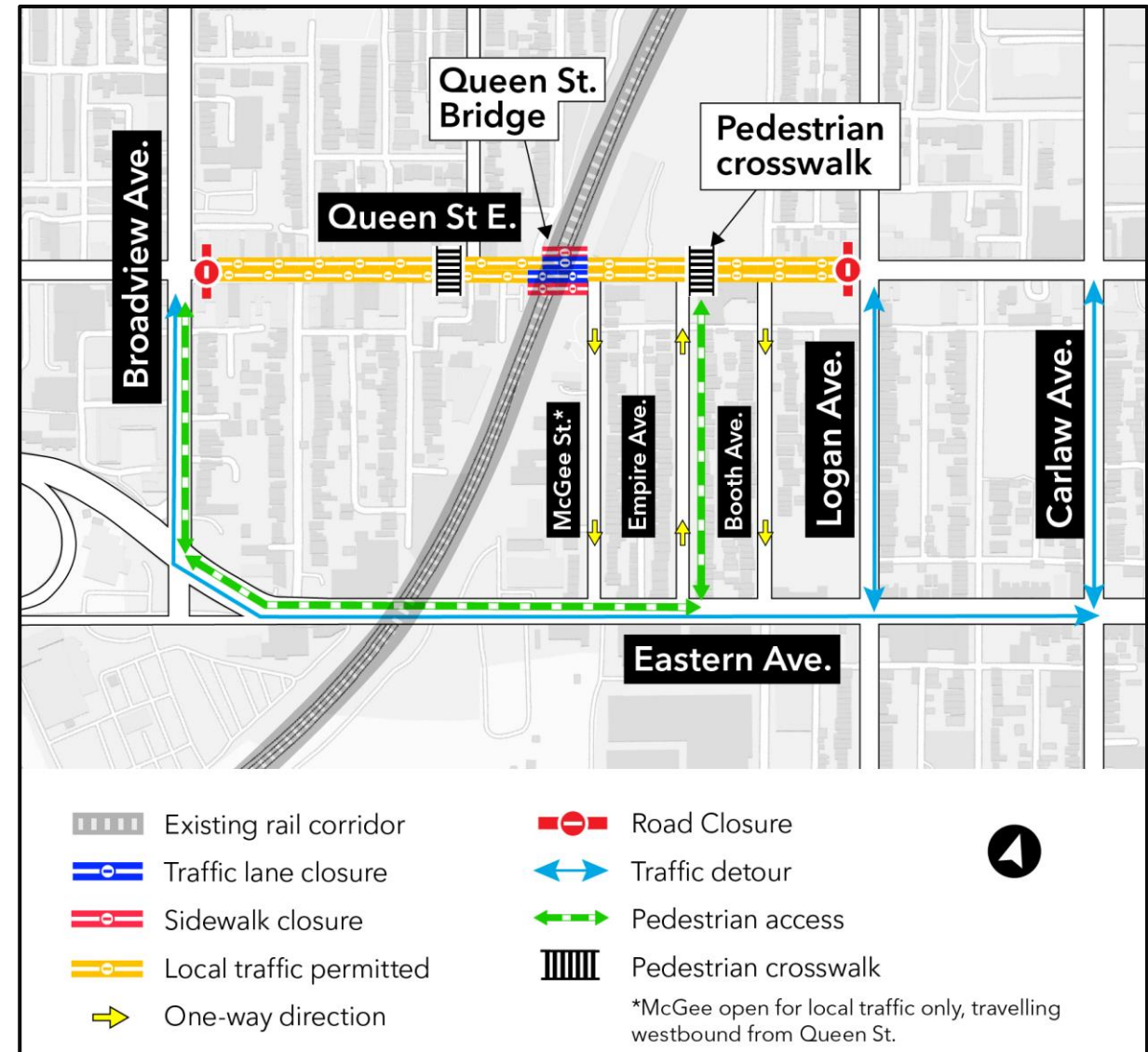


# Queen Street East: Weekend Road Closure

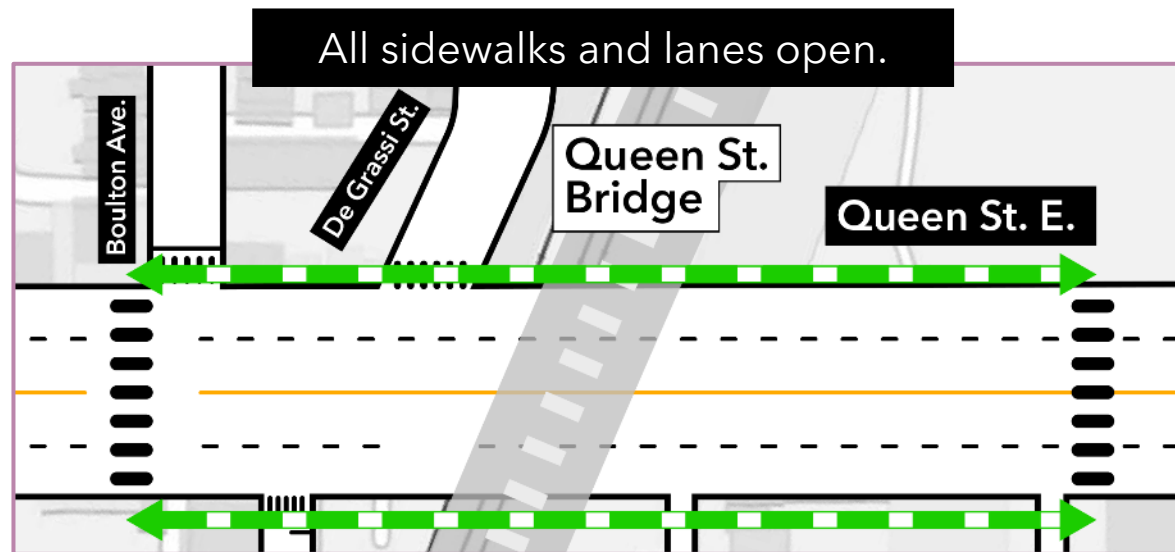
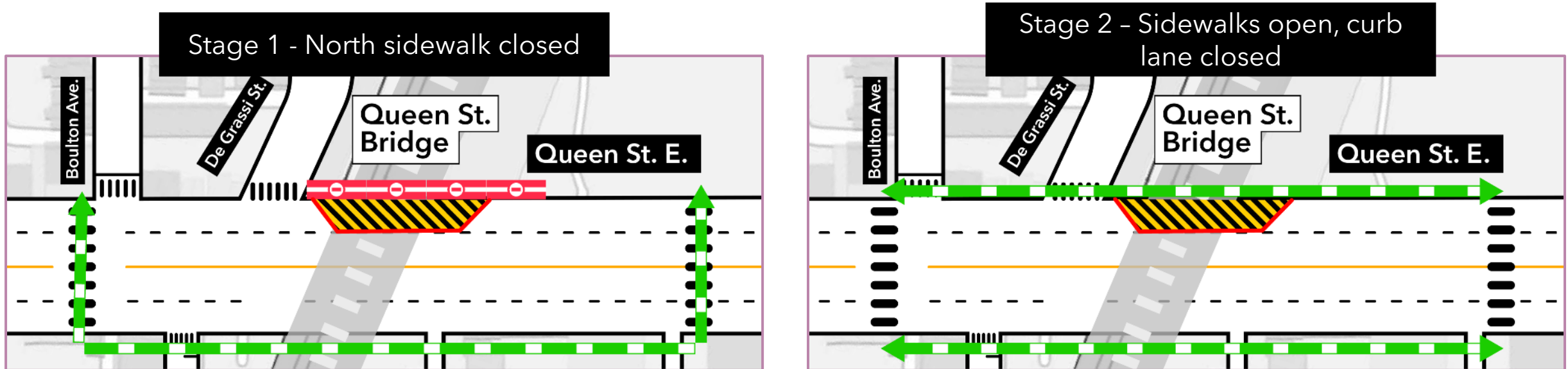
- Once the abutments are complete, the new bridge girder will be lifted into place and installed.
- Queen Street East will be closed over one weekend to complete the girder installation.
- The road will be closed between Broadview Ave. and Logan Ave. - access for local residents and businesses will be maintained.
- The TTC 501 Queen Streetcar will be replaced with buses from Thursday September 26 - Monday September 30, 2024






## Hours of closure:

- Starting on Friday, September 27 at 9 p.m. until Monday, September 30, 2024, at 5 a.m.
- Work will take place on a 24-hour basis during the closure
- Mitigations measures will be in place to limit community disruption



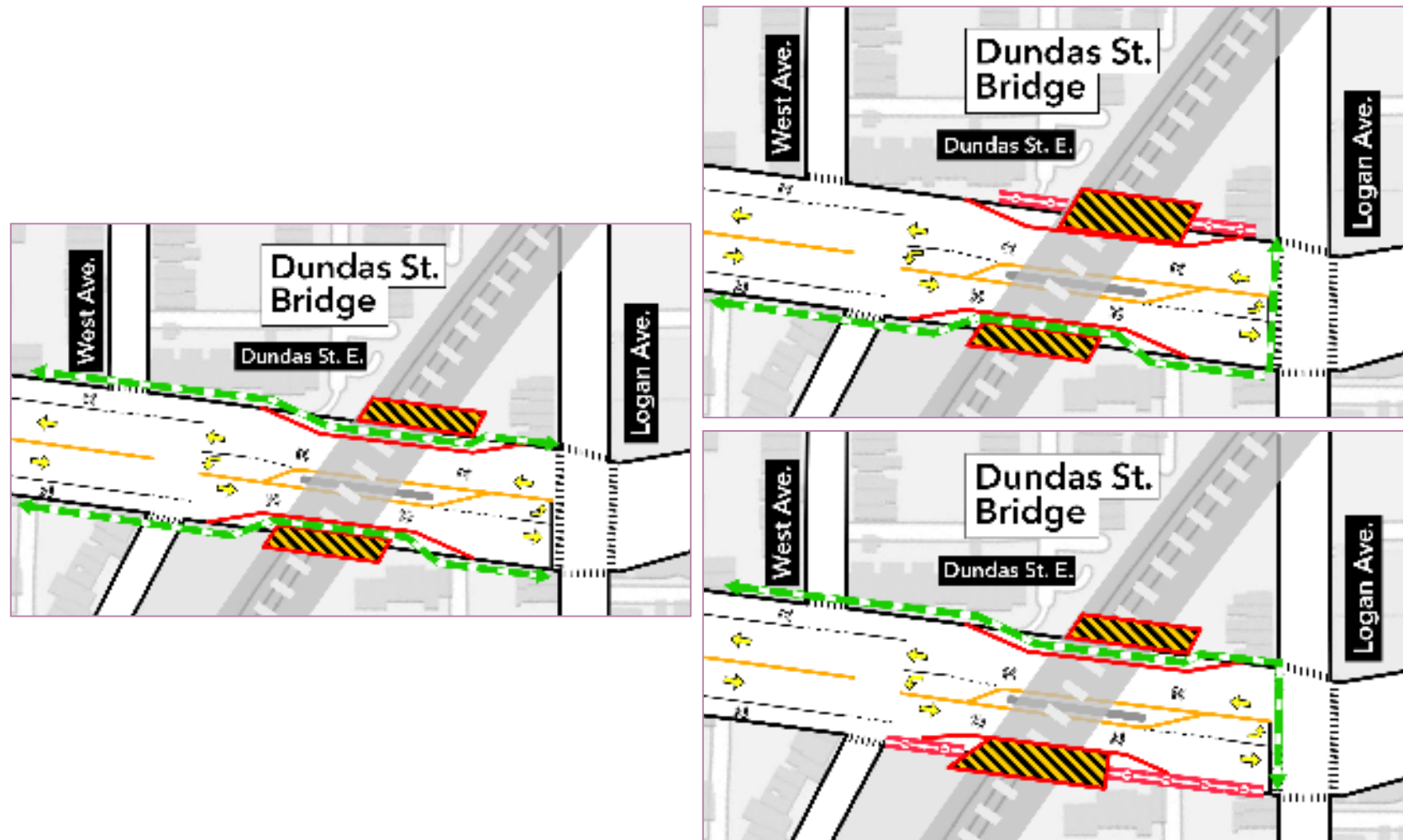
# Traffic Configuration: Queen Street East Bridge - Until Sept 2024



-  Existing rail corridor
-  Pedestrian access
-  Work area
-  Sidewalk closure
-  Temporary concrete barrier



# Current Traffic Configuration: Dundas Bridge



-  Existing rail corridor
-  Work area
-  Sidewalk closure
-  Lane direction
-  Pedestrian access
-  Shared bike lane



# Construction Update: In-Corridor Work

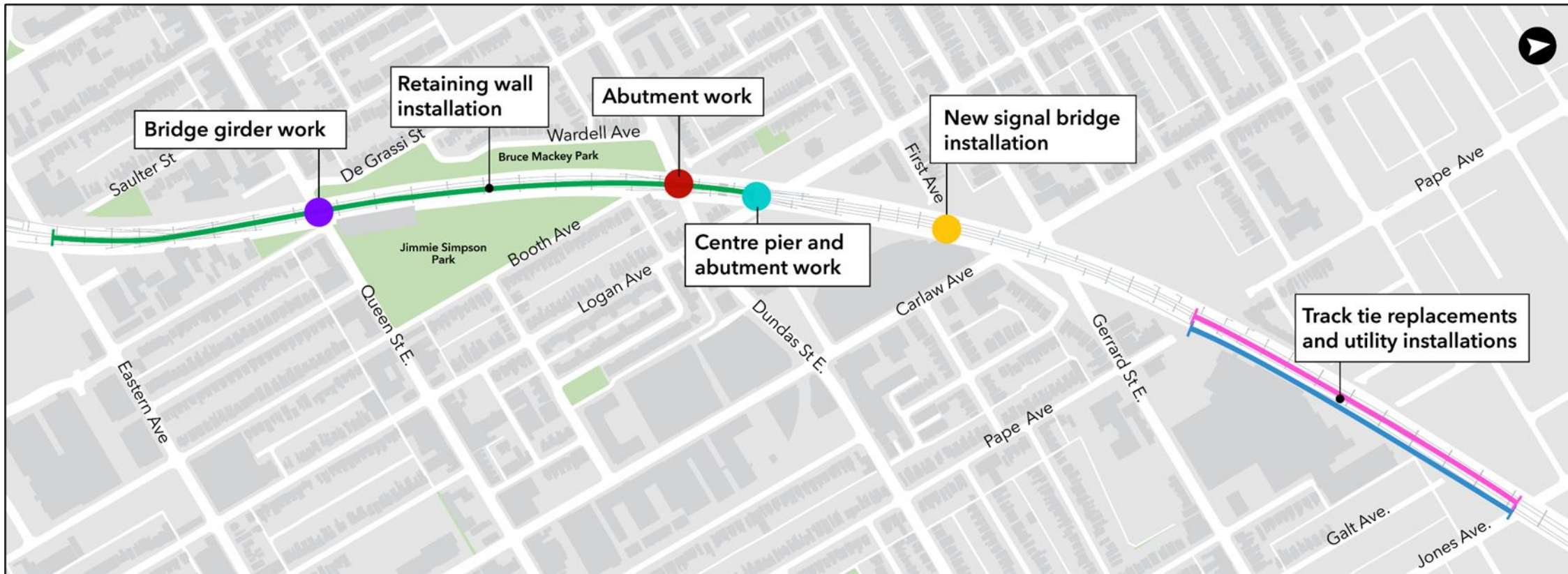
# In-Corridor Work Update

#	Activity	Description	Location	Date and times
1	<b>Track tie replacements and utility installations</b>	<p>Replacing old track ties in the rail corridor.</p> <p>Excavation inside the rail corridor to install an enclosed conduit (raceway) that will protect utilities from external conditions.</p>	Within the rail corridor between Thackeray St. and Jones Ave.	<ul style="list-style-type: none"> <li>Overnight work will continue until approx. two months.</li> <li><b>Overnight:</b> Monday - Friday from 8 p.m. - 5 a.m.</li> </ul>
2	<b>Fence and noise barrier installation</b>	New fencing and noise barriers will be installed. The pathway at Galt Laneway to Gerrard Square will be closed to accommodate this work.	On the east side of the rail corridor from Gerrard St. E. and Jones Ave.	<ul style="list-style-type: none"> <li>Ongoing until Fall 2024</li> <li>Noise barrier at LCBO and 926 Gerrard St. E. (LCBO) have been completed</li> <li><b>Daytime:</b> Monday - Friday from 7 a.m. to 7 p.m.</li> </ul>
3	<b>Retaining wall construction and noise barrier installation</b>	Installation of pre-cast concrete block retaining walls	On the east side of the rail corridor from Eastern Ave. - Jimmie Simpson	<ul style="list-style-type: none"> <li>Ongoing until approx. Fall 2024</li> <li><b>Daytime:</b> Monday - Saturday from 7 a.m. to 7 p.m.</li> <li><b>Overnight:</b> Periodic overnight work from Sunday - Friday from 8 p.m. to 5 a.m.</li> </ul>

# Weekend Rail Corridor Closure - October 2024

**Dates:** Friday October 4 - Monday, October 7, 2024

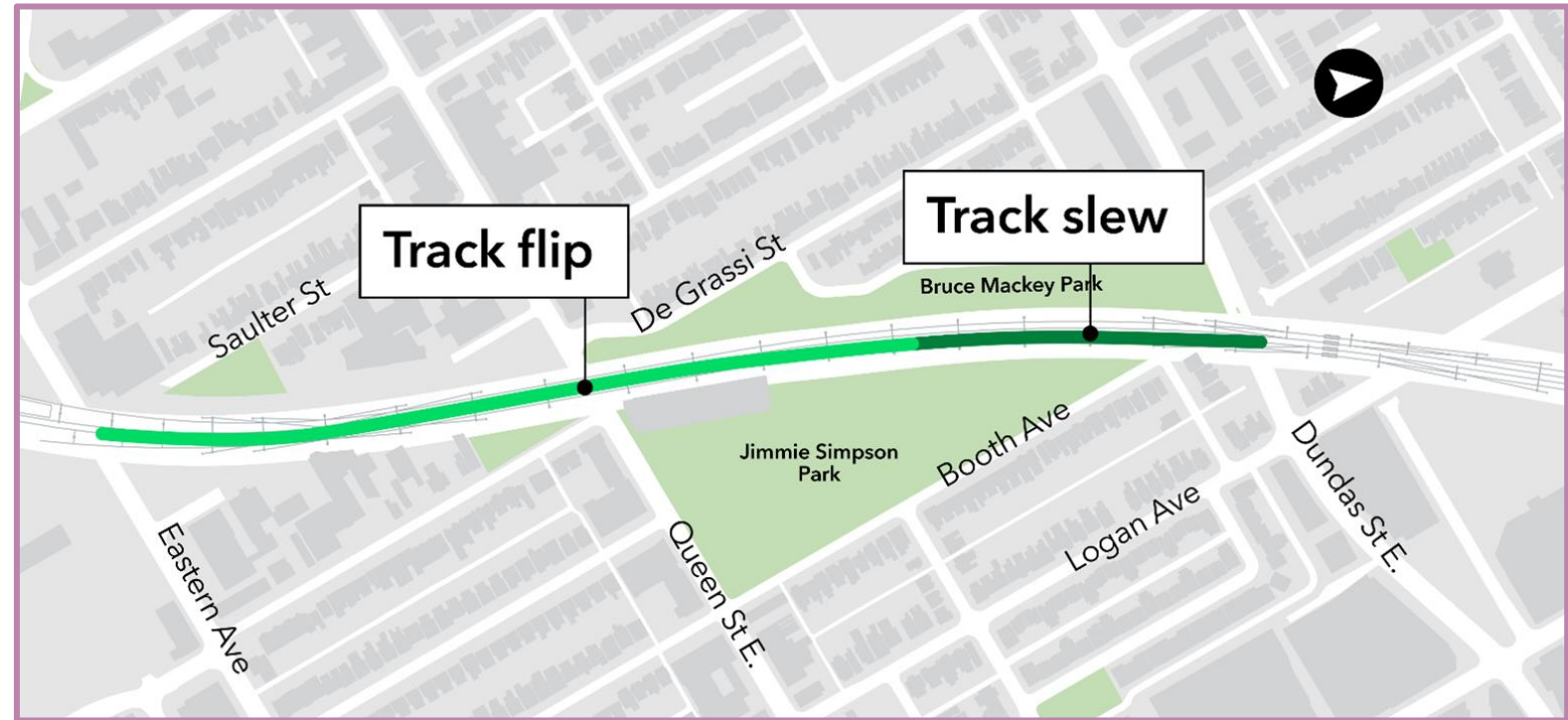
**Hours of work and duration:** Work will be continuous between Friday 7 p.m. to Monday 5 a.m.



- Various construction activities will take place in the rail corridor between Friday, October 4, to Sunday, October 6, 2024.
- The major activity will be installing the train signal bridge within the rail corridor east of First Avenue.
- The Lakeshore East GO rail corridor needs to be closed to safely complete this work. GO train service will be affected.
- Work will be executed on a 24-hour basis to ensure that all necessary construction activities are completed when trains are not running.

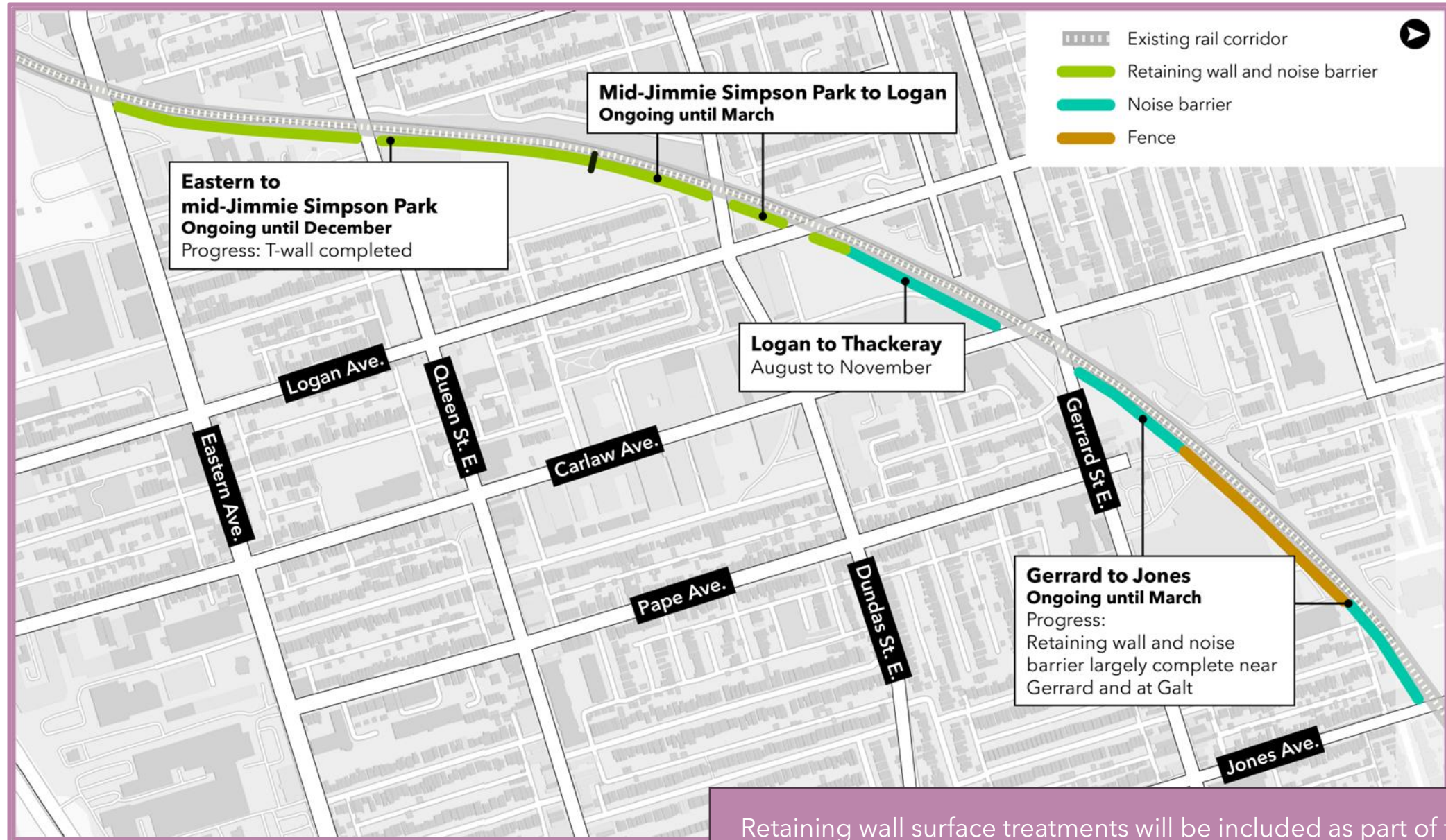
# Weekend Rail Closure - November 2024

- From the evening of Friday November 8 to the morning of Monday November 11, 2024, the Lakeshore East Rail Corridor will be shut down to relocate the GO rail tracks from the north side to the south side of the rail corridor
- The tracks will shift between Eastern Avenue up to the middle of Jimmie Simpson Park
- A temporary track slew will be installed near the north end of Jimmie Simpson Park which will transition the rail back onto the north side
- Rail tracks will remain on the north side of the corridor between Dundas Street East and Jones Avenue
- During the rail closure, overnight work may be required to ensure all necessary activities are completed during the closure





# Retaining Wall Construction Update



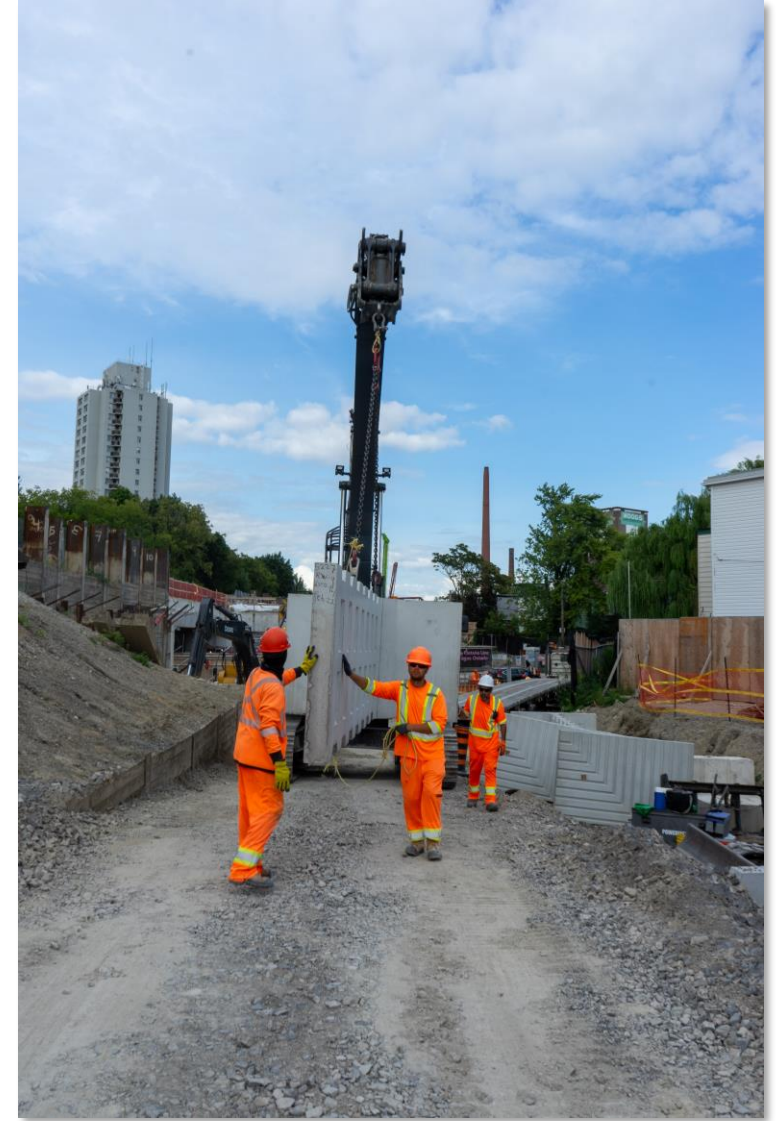
## In-Corridor Work Progress: Retaining Wall Installation



Emerging design on installed t-block south of Queen St. E.



Delivery of t-blocks at Dundas St. E.



Transporting t-block to the retaining wall by Jimmie Simpson park.

## **Construction Update: North Side of Rail Corridor**

- In November 2024, construction will begin on the north side of the rail corridor between Eastern Avenue and Dundas Street East
- The first activities will be:
  - Tree removals and clearing and grubbing
  - Access road construction
  - Fence and retaining wall removals
- Exact start dates for these activities are still being determined
- The community will be provided with more details once specific timelines are confirmed

# Access Roads

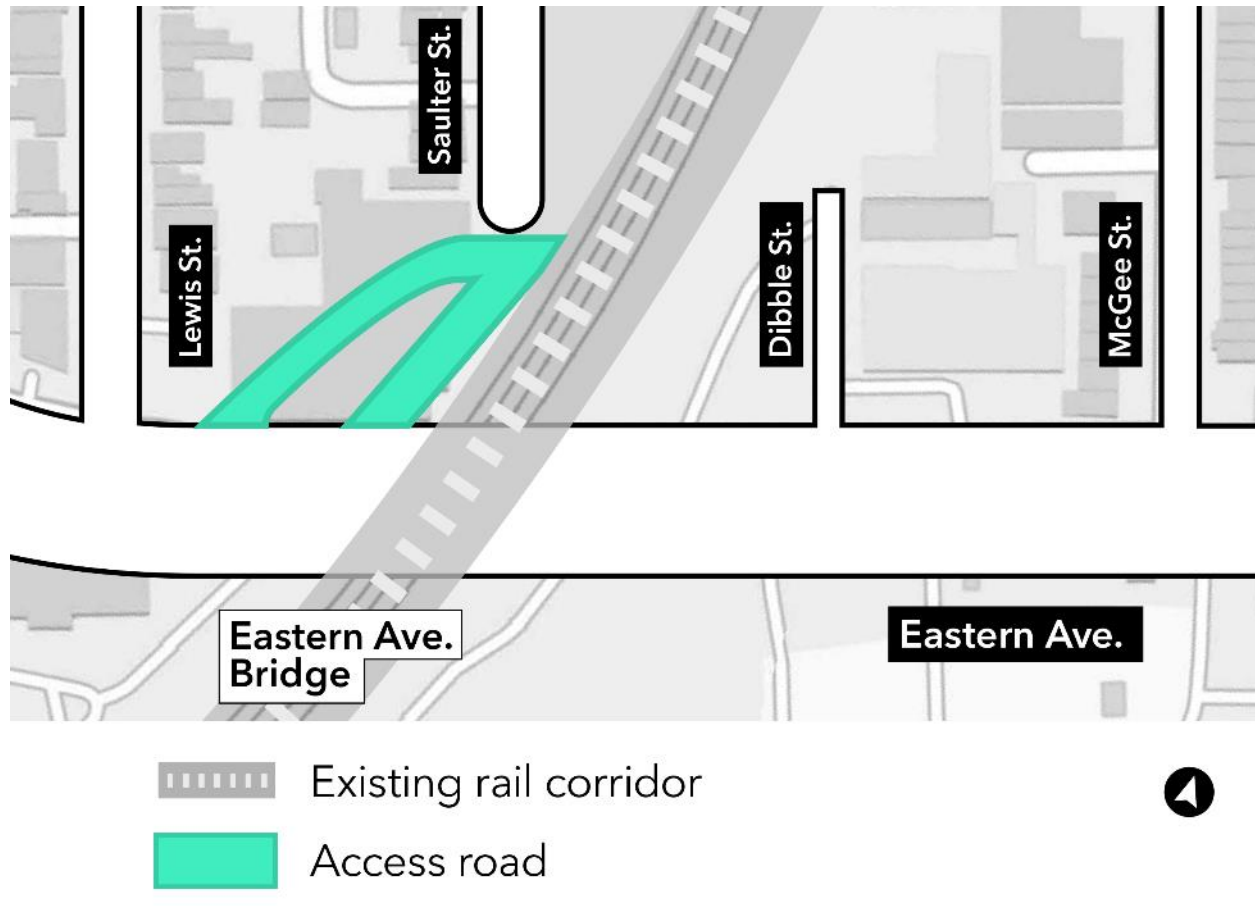


1	Eastern Ave / Dibble St
2	Queen St / McGee Street
3	Queen St (access road into rail corridor from Queen Street)
4	Dundas Street south side behind Paisley Ave
5	Dundas Street / Logan Laneway
6	10 Dickens Street
7	Pape Ave - adjacent to pedestrian bridge crossing

8	<b>NEW:</b> Eastern Ave (starting Sept 2024)
9	<b>NEW:</b> Queen St / Strange Street
10	<b>NEW:</b> Queen St / De Grassi Street
11	<b>NEW:</b> Dundas St
12	<b>NEW:</b> Logan Ave
13	<b>NEW:</b> Gerrard Street

**Construction of new access roads will begin approximately November 2024. The existing access roads on the east side of the corridor will remain operational until November.**

# Eastern Avenue Access Road Construction



- As early as Wednesday, September 25, 2024, a new access road will be built at 356 Eastern Avenue
- Excavation, grading, and compaction work will be required to construct the new access road
- Construction vehicles will enter and exit the rail corridor via Eastern Avenue
- Access road construction will take approximately two weeks to complete
- No tree removals are required to build this access road
- The access road on the other side of the Eastern Avenue bridge will be closed once the access road at 356 Eastern Avenue is operational

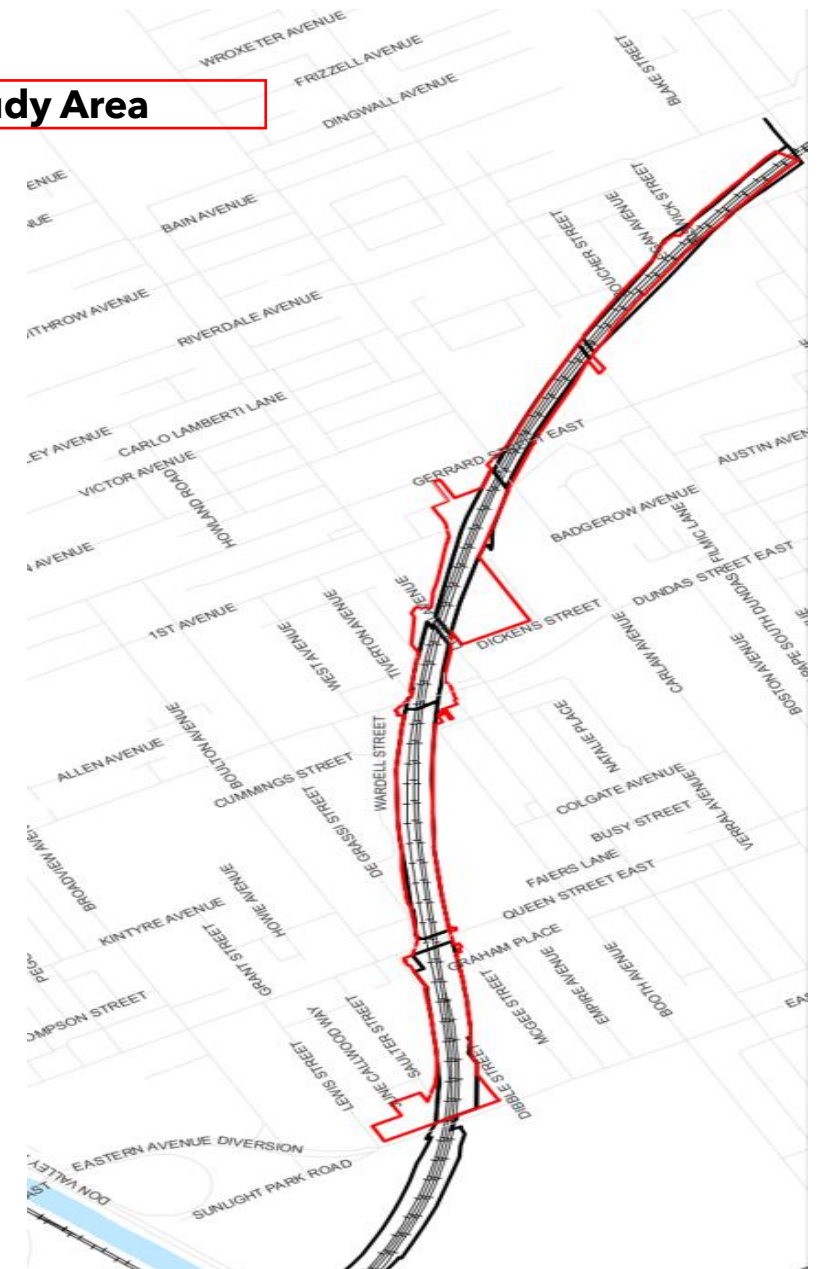
# 'North' Side Tree Removals Update

# Tree Removals and Permitting Update - August 2024

## North side tree removal and injury permits: IN PROGRESS

- Hatch Arborist Report currently in draft and documents Joint Corridor Early Works tree impacts outside of the MX Right-of-Way (ROW)
- Tree impacts within the MX ROW are summarized.
- Recommendations for tree protection, removals, injury and mitigation measures to be implemented during construction
- Tree compensation will follow the MX Vegetation Guideline (2022), and include combination of cash-and-lieu compensation and replanting
- **Anticipated start of North side tree removals** and Tree Protection Zone installation: November 2024
- Removals from Eastern Avenue to Dundas Street East will begin approximately mid November 2024
- Tree removals between Dundas Street East and Jones Avenue will begin approximately January 2025
- Removals will take place outside of the breeding bird window

### Tree Inventory Study Area



# Trees Identified for Removal at North Side of Rail Corridor: July 2024

City of Toronto Tree Category	Trees Identified for Removal*
<b>Category 1:</b> Trees with diameter of 30 cm or more on private property	11
<b>Category 2:</b> Trees with diameter of 30 cm or more on private property, within 6 metres of study area	5
<b>Category 3:</b> Trees of all diameters on City-owned parkland	40
<b>Category 4:</b> Trees of all diameters within the Ravine and Natural Feature Protection Limit	- (none with RNFP area)
<b>Category 5:</b> Trees of all diameters within City road allowance, adjacent to study area	13
<b>Shared Boundary Tree:</b> Category 5/Mx-owned	1
<b>Shared Boundary Tree:</b> Category 1/Mx-owned	3
<b>Shared Boundary Tree:</b> Category 3/Mx-owned	4
Trees <=30 DBH on private property	18
Trees within Mx-owned property (do not require permit for removal)**	394
<b>Total</b>	<b>489</b>

\* Arborist Report remains in draft as of August 2024 and tree totals are subject to change. Of the 394 trees, 363 trees are located within the MX ROW.



# 2024 Lookahead

## Q3 2024 (July - September)

**Activity:** Utility installations between Gerrard St. E. and Jones Ave.

**Hours:**

- **Daytime:** Monday - Friday from 6 a.m. to 5 p.m.
- **Overnight:** Monday - Friday from 8 p.m. - 5 a.m.

**Activity:** Continue installation of retaining walls and noise barriers from Eastern Ave. - Jones Ave

- **Daytime:** Monday - Saturday from 7 a.m. to 7 p.m.
- **Overnight:** Sunday - Thursday from 8 p.m. to 5 a.m.

**Activity:** Queen St. Bridge deck and girder installation - weekend road closure

**Hours:** Sept 27 - Sept 30, overnight and daytime work.

**Activity:** Continue construction of new bridge abutments at Queen St. E., Logan Ave., and Dundas St. E.

**Hours:** Monday to Saturday from 7 a.m. - 5 p.m. with periodic overnight work.

## Q4 2024 (October- December)

**Activity:** Rail closure for signal bridge installation and relocation of tracks

**Hours:**

- Oct 4-7, 2024 - 24-hour work
- Nov 6-9, 2024 - 24 hour work

**Activity:** Continue construction of the new bridges on the east side of the rail corridor

**Hours:** Exact days and work hours to be determined

**Activity:** Continue preparation work (access roads) for construction on the west side of the corridor

**Hours:** Starting Nov 2024

**Activity:** Logan Ave. watermain relocation

**Hours:** Exact days and work hours to be determined

**Activity:** Logan and Dundas bridge deck and girder installation

**Hours:** Exact days and work hours TBD.

**Activity:** Start preparation work (tree and fence removals) for construction on the west side of the corridor

**Hours:** Starting in Sept 2024 - exact days and work hours to be determined.

- Work activities and hours listed are tentative and subject to change



**Eastern Avenue Bridge  
East Harbour Transit Hub**

# EAST HARBOUR TRANSIT HUB

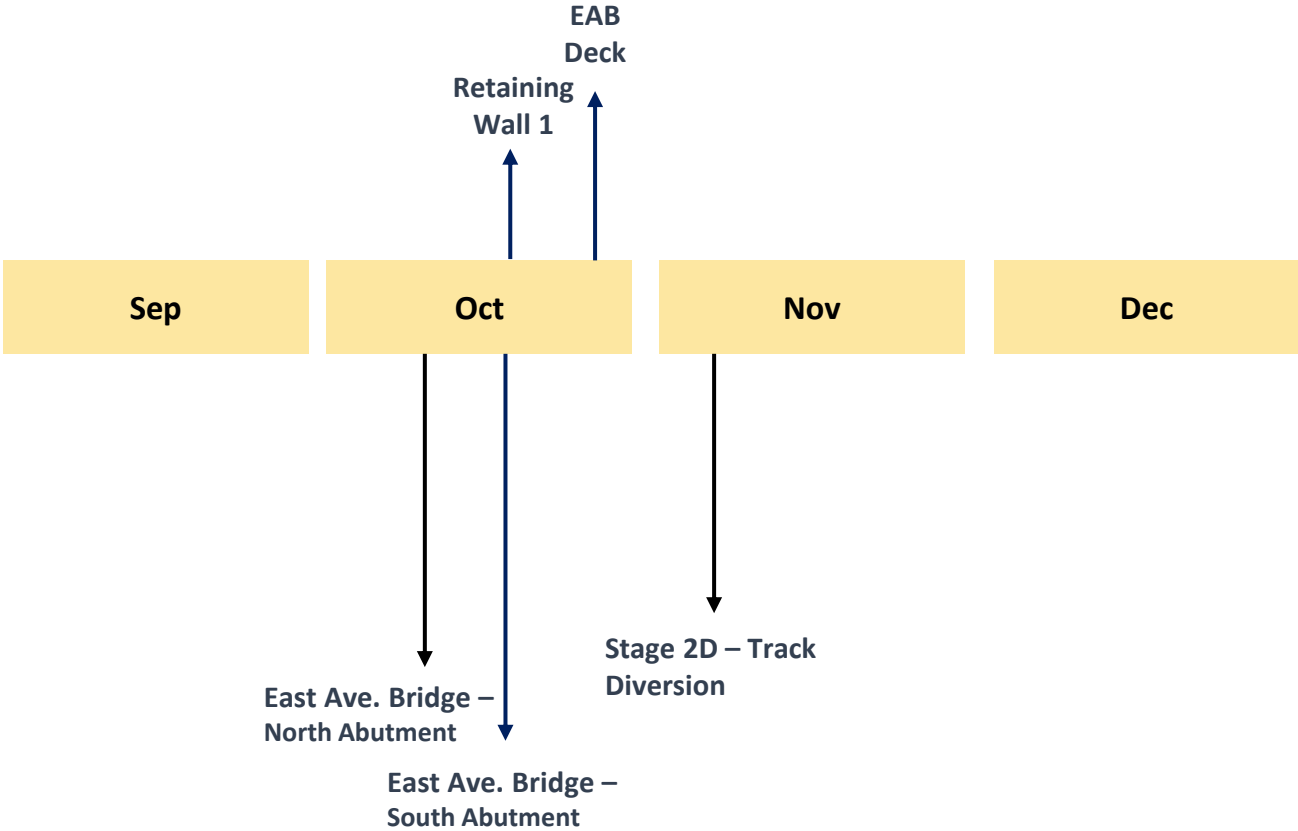
## EARLY WORKS AND EASTERN AVENUE BRIDGE WORK

- Early Works may include such things as: establishing the work zone, moving equipment, supplies, and other resources, geo-technical investigations, utility daylighting, and track work.
- Early works are an important component of any construction project. These activities set the groundwork for major construction and reduce the risk of delays to the project downstream.
- Ongoing curb-lane closures on Eastern Avenue are in effect until October 2026\*, to create a safe working zone for the crews and vehicle traffic.
- There will be a suspension of GO train service over the weekend of November 8, and during that time, we have scheduled our track shift. Therefore, will be working continuously during the weekend starting at 8 pm on November 8 until November 11 at 5 am. Roads will not be impacted.
- To complete the deck formwork stripping, there will be road closures on Eastern Avenue between Broadview and Logan Avenues, **Nightly** starting at 10 pm and re-open at 5 am between October 15 – 25, excluding Saturday and Sunday.

•Dates are subject to change

# EAST HARBOUR TRANSIT HUB

## UPCOMING CONSTRUCTION ACTIVITIES



Note: Dates are subject to change

# What's Next and Wrap Up

# Community Engagement

**Metrolinx along with construction and project representatives are here for the community throughout the project.**

**Next CLC:** Thursday, October 17 from 6:00 -7:30 p.m.

**Follow us on social media:**

X / Facebook / Instagram @ OntarioLine



Leslieville Jazz Fest, July 5-7, 2024, Jimmie Simpson Park

# Contact Us

**Metrolinx will keep the community, residents and businesses informed by providing project updates, seeking input and feedback, and addressing questions and concerns effectively and quickly.**

## Stay connected:

Ontario Line e-newsletter @ [Metrolinx.com/OntarioLine](https://www.metrolinx.com/OntarioLine)

## Questions or comments:

[OntarioLine@metrolinx.com](mailto:OntarioLine@metrolinx.com)

24/7 call # 416-202-5100

## Follow us on social media:

Twitter / Facebook / Instagram @ OntarioLine



# Questions and Answers





# Appendix

# CLC Code of Conduct



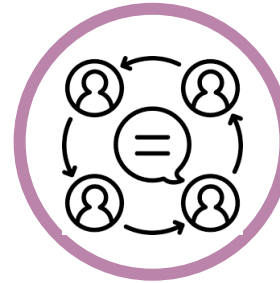
**Participate** fully, openly, and transparently in discussions, while also creating an environment where all members are encouraged to contribute and share their views.



**Participate** in a respectful manner towards other CLC members by using appropriate language.



Keep requested agenda and discussion items within the **mandate and scope** of the **Construction Liaison Committee**.



**Represent** their community's diverse perspectives and interests.

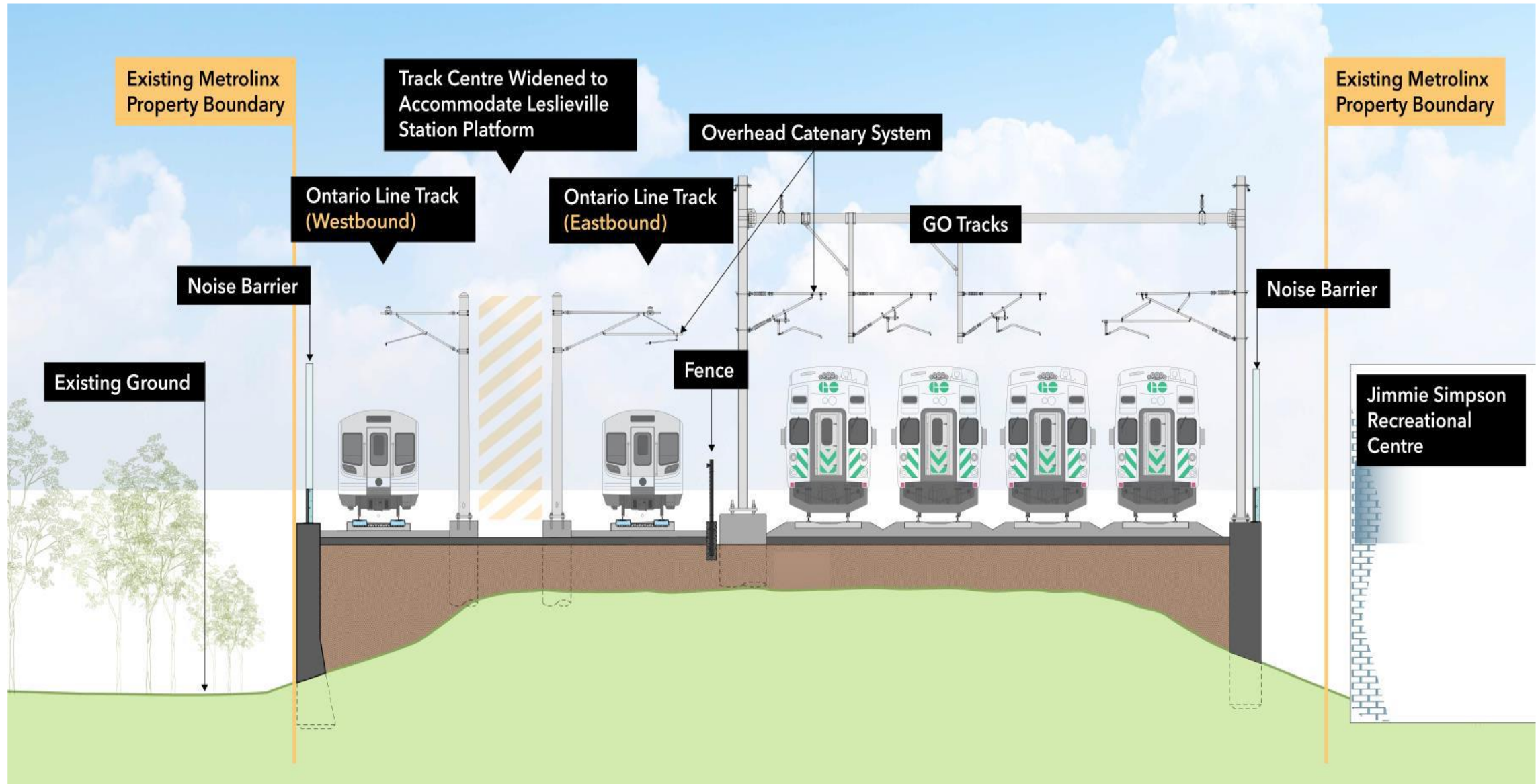


**Maintain** confidentiality of sensitive issues, when requested by participants.



**Commit** to equity, diversity and inclusion by supporting the participation of the whole community regardless of race, gender, class, sexuality, age or ability.

# Summary of Lakeshore East Joint Corridor Early Works



## Construction Liaison Committees (CLC)

Construction Liaison Committees (CLCs) provide open, two-way communication and sharing of information before and during the construction of the Ontario Line project. The CLC will focus on the impacts, issues and areas of concern for resolution related to the Ontario Line construction within the Leslieville/Riverside neighbourhoods. The full Terms of Reference will be shared with the CLC via email.

- The CLC will meet regularly as construction activities get underway
- CLC frequency is flexible, depending on schedules/availability and critical construction work
- Metrolinx will work with stakeholders to develop meeting agendas
- Meetings will last 60-90 minutes, depending on the agenda
- Metrolinx to chair the CLC with support from the project contractor
- Project contractor will participate and lead the construction updates
- Action items/issues/complaints to be logged for resolution

### Construction Liaison Committee (CLC)

#### Community representatives



- Elected officials
- Community groups/residents
- Residents' groups/associations
- Tenant representatives
- BIAs
- Business owners

#### City of Toronto



#### Project team members



- Metrolinx—representatives from Subways Sponsors Office, Design Division, Community Engagement, Project Teams and Contractor/Project Co.

## Who Does What?



A division of CRH Canada Group Inc.

Responsible for construction delivery, establishing the construction schedule, determining construction plans and the care and control of construction sites.



Contribute subject matter expertise regarding City polices, requirements, permits and procedures.

Ensure key City and community interests are noted and addressed through application design reviews and permits.

Work with partners to minimize negative impacts on residents and the environment.

Monitor construction sites for safety and adherence to City standards and bylaws.



Overarching accountability for entire project, strategy and content approvals, building relationships and understanding needs of the community.

Oversight of construction contractors to ensure compliance with contractual obligations, including work schedules, adherence to acceptable noise levels, traffic management plans and permit conditions.

# Construction Liaison Committee Members



## Community Members

- Riverside BIA
- Leslieville BIA
- WoodGreen Community Services
- Lakeshore East Community Advisory Committee
  - Shelley Kline
  - Tony Whitaker
- Rosemary Waterston (resident)
- Catherine Riddell (resident)
- Stephen Davies (resident)
- Fontbonne Ministries
- Saulter Street Brewery
- Bonjour Brioche Bakery
- Tabule Restaurant
- Jimmie Simpson Recreation Centre (City of Toronto)

## Elected Officials (or designate)

- MP Julie Dabrusin
- MPP Peter Tabuns
- Councillor Paula Fletcher



- Transit Expansion Division
- Parks, Forestry and Recreation
- Transportation Services



- Ontario Line Community Engagement
  - Mark Clancy
  - Katiana Moussa
  - Louis Vatr
- Dufferin Construction
- Project Sponsor
- Capital Projects Group
- Traffic and Transportation
- Other project teams as required

# Impact Levels

## Major Impact



**Includes:**

- Major intersection work
- Overnight work
- Transit impacts
- Road closures
- Public parking displacement

## Medium Impact



**Includes:**

- Paving
- Long term traffic lane closures
- Work affecting access to private driveways

## Minor Impact



**Includes:**

- Short-term traffic lane closures
- Temporary pedestrian detours



# Summary of Lakeshore East Joint Corridor Early Works



## Lakeshore East Joint Corridor Early Works Scope of Work Summary



Future station



Utility relocations along Queen Street, Dundas Street, Logan Avenue and the surrounding side streets.



Upgrade to the rail corridor, including excavation of the existing embankment, installation of new drainage infrastructure, installation of pre-cast concrete retaining walls and backfill of the corridor.



Removal of existing and construction of new GO Bridges at Queen Street East, Dundas Street East and Logan Avenue. Construction of two new Ontario Line bridges at Dundas and Logan.



Realignment of the existing GO tracks, construction of a fourth GO track, and preparation works for eastbound and westbound Ontario Line tracks.



Construction of noise barrier walls to mitigate the impact of the railway on adjacent properties.



Construction of retaining walls for construction of the future Ontario Line stations: Riverdale-Leslieville station and Gerrard station.

# Overview | Bridges Redevelopment

