

Installation of utility monitoring devices: King Street West and Bathurst Street

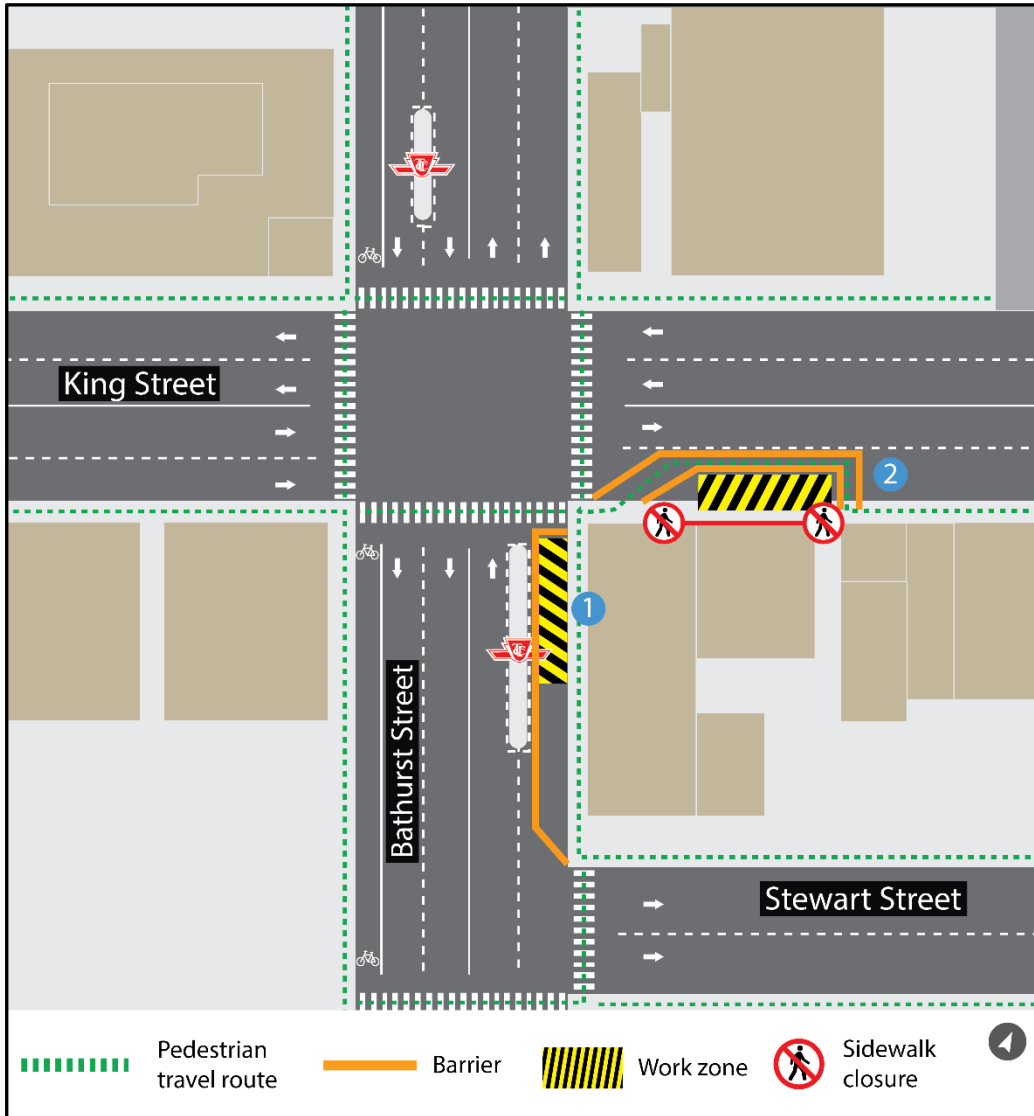
Expected start date: As early as September 30, 2024

Expected duration: Up to 2 weeks

Hours of work: Weekdays (Monday-Friday) 10:00 a.m. to 3:00 p.m.

Additional work hours from 5:30 p.m. to 11:00 p.m. as required

Map of Work Areas: King Street and Bathurst Street



Monitoring device installations will move around the intersection, in the identified yellow work zones, one at a time.

Installations and lane occupancies will not occur simultaneously. Multiple lanes or sidewalks will not be blocked, as crews work on individual locations before re-opening and moving to the next location.

What is happening?

- Crews are installing monitors and conducting investigative utility works on **King Street West** and **Bathurst Street**, as indicated in the areas shown in yellow on the maps above.
- Construction crews will be investigating utilities and installing monitoring devices in the area shown in yellow on the map above to support construction of the future Ontario Line subway tunnels and station.
- Monitoring devices are installed to monitor the area around utilities during construction. They will be installed underground and covered with a flush mount. They are expected to be in place until the completion of the project, and may occasionally be revisited by crews
- A temporary lane closures is required for crews to safely carry out this work.
- Crews will complete different segments of work, moving within the location identified on the map.

What to expect

- The work is scheduled to begin as early as **September 30, 2024**, for up to 2 weeks. Work may be postponed, extended or rescheduled due to unforeseen circumstances.
- Work on Bathurst Street is expected to take place on weekdays (Monday-Friday), from 10:00 a.m. to 3:00 p.m., however crews may be onsite prior to 10:00 a.m. to set up equipment. Additional work hours may be added, if required.

Information as of: September 16, 2024

- Additional work hours on King Street West is expected to take place on weekdays (Monday-Friday), from 5:30 p.m. to 11:00 p.m. if needed. Crews may be onsite prior to 5:30 p.m. to set up equipment.
- Area residents and businesses can expect to hear noise from work equipment, specifically hydrovac trucks or drills as required to assess underground utilities and ground conditions. Crews will take measures to minimize noise impacts wherever possible.
- All closures for work are temporary and intermittent; areas will only be closed while crews are surveying the specific areas. The areas will be returned to public use upon completion of the monitoring device installation.

Bathurst Street intermittent partial closures (as noted in the map above):

- The northbound curb lane on Bathurst Street will be closed intermittently while work is ongoing and then reopen once work is completed.
- Pedestrian passage will be maintained with the use of barriers to separate pedestrians from active work zones where sidewalk closure is required.
- Signage will be posted advising of restrictions.

Note: Access may resume prior to 10:00 a.m. if works are completed ahead of schedule.

King Street West intermittent partial closures (as noted in the map above):

- The eastbound curb lane on King Street West will be closed intermittently while work is ongoing and then reopen once work is completed.
- Pedestrian passage will be maintained with the use of barriers to separate pedestrians from active work zones where sidewalk closure is required.
- Signage will be posted advising of restrictions.

Note: Access may resume prior to 5:30 p.m. if works are completed ahead of schedule.

- Transit services will be maintained.
- After each work shift, each area will be securely covered and marked for safety until workers return or the work is complete. The areas will be returned to the public after completion of the monitoring device installation.
- All the necessary construction permits have been obtained.
- Work may be postponed or rescheduled due to unforeseen circumstances.
- Crews will return to the work zones in the future to perform maintenance on installed devices.
- For more information about upcoming station work please see metrolinx.com/Ontarioline or sign up for the e-newsletter.

About the Ontario Line

- 15.6-kilometre subway line that will make it faster and easier to travel within Toronto and beyond.
- 15 stops and more than 40 connections to other transit, including GO train, subway, LRT, streetcar and bus lines.
- Less than 30 minutes from one end of the line to the other.
- 28,000 fewer car trips each day.

Contact us:

Call us 24/7 at: [416-202-5100](tel:416-202-5100)

Write to us at: ontarioline@metrolinx.com

Find us on X, Facebook, and Instagram:

[@ontarioline](#)

Visit the website:

www.metrolinx.com/ontarioline

Visit our community offices:

770 Queen Street East (near Queen & Broadview)

General hours:

Mondays, Tuesdays, and Fridays: 9:00 a.m. to 5:00 p.m.

Wednesdays and Thursdays: 10:00 a.m. to 6:00 p.m.

Thorncliffe Park:

East York Town Centre
45 Overlea Blvd., Toronto, ON M4H 1C3

Unit 153 (across from the Rogers store)

General hours:

Monday – Friday, 9 a.m. – 5 p.m.