

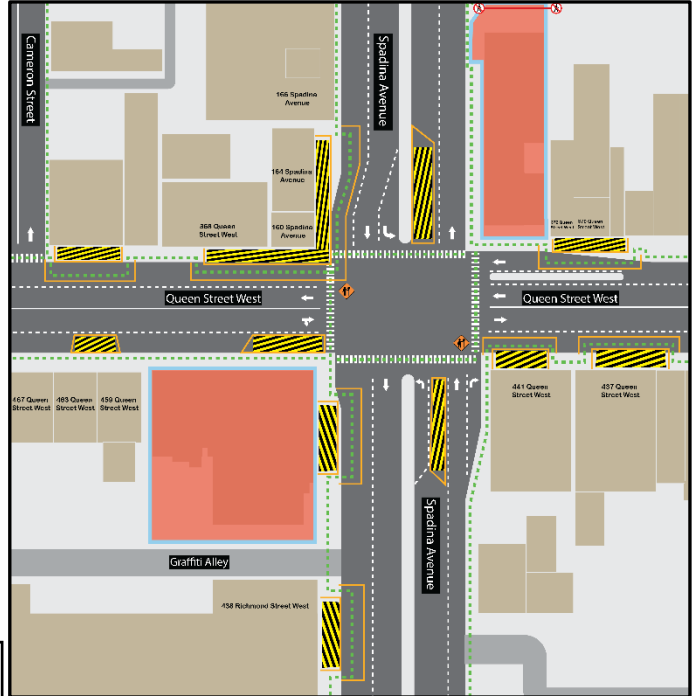
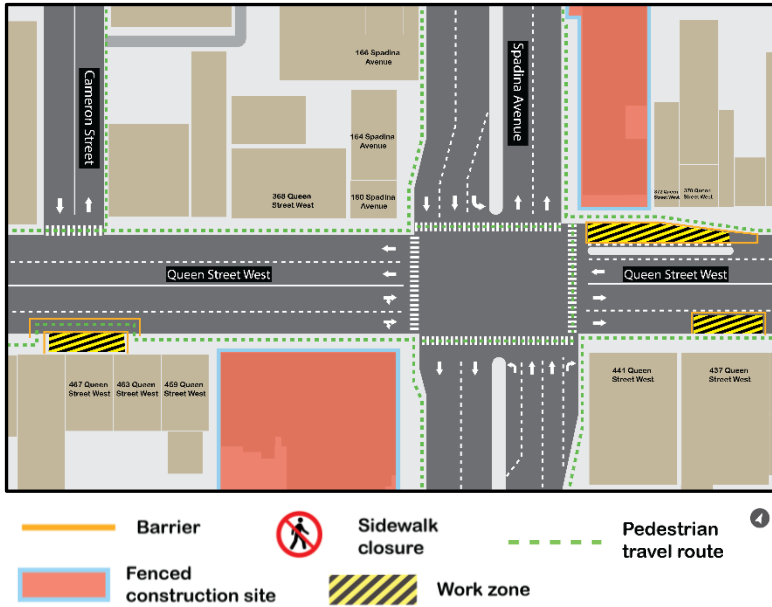
# Installation of utility monitoring sensors: Queen Street West and Spadina Avenue

**Expected start date:** As early as **October 2<sup>nd</sup>, 2024**

**Expected duration:** Up to 7 weeks

**Hours of work:** Weekdays (Monday-Friday) 9:00 a.m. to 5:00 p.m.

## Map of Work Areas: Queen Street West and Spadina Avenue



**Monitoring device installations will move around the intersection, in the identified yellow work zones, one at a time.**

**Installations and lane occupancies will not occur simultaneously. Multiple lanes or sidewalks will not be blocked, as crews work on individual locations before re-opening and moving to the next location.**

### What is happening?

- Crews are installing sensors within current utility and ground monitoring on **Queen Street West and Spadina Avenue**, as indicated in the areas shown in yellow on the maps above.
- Sensors are installed to automate the monitors within the area around utilities during construction of the future Ontario Line subway tunnels and station.
- They will be installed underground and covered with a flush mount. They are expected to be in place until the completion of the project, and may occasionally be revisited by crews.
- Temporary lane closures are required for crews to safely carry out this work.
- Crews will complete different segments of work, moving within the location identified on the map.

### What to expect

- The work is scheduled to begin as early as **October 2<sup>nd</sup>, 2024**, for up to 7 weeks. Work may be postponed, extended or rescheduled due to unforeseen circumstances.
- Work is expected to take place on weekdays (Monday-Friday), from 9:00 a.m. to 5:00 p.m. however crews may be onsite prior to 9:00 a.m. to set up equipment. Additional work hours may be added, if required. An updated notice will be distributed to the community for additional work hours.
- Area residents and businesses can expect to hear noise from work equipment, specifically coring or drills as required to assess underground utilities and ground conditions. Crews will take measures to minimize noise impacts wherever possible.
- All closures for work are temporary and intermittent; areas will only be closed while crews are surveying the specific areas. The areas will be returned to public use upon completion of the monitoring device installation.

### **Queen Street West intermittent partial closures (as noted in the map above):**

- The northbound and southbound curb lanes on Queen Street West will be closed intermittently while work is ongoing and then reopen once work is completed.
- Pedestrian passage will be maintained with the use of barriers to separate pedestrians from active work zones.
- Flaggers will be used to help pedestrians safely cross the street as well as help control traffic.
- Signage will be posted advising of restrictions.

### **Spadina Avenue intermittent partial closures (as noted in the map above):**

- The northbound curb lane and southbound left lanes on Spadina Avenue will be closed intermittently while work is ongoing and then reopen once work is completed.
- Pedestrian passage will be maintained with the use of barriers to separate pedestrians from active work zones.

**Note:** Access may resume prior to 9:00 a.m. if works are completed ahead of schedule.

- Transit services will be maintained.
- After each work shift, each area will be securely covered and marked for safety until workers return or the work is complete. The areas will be returned to the public after completion of the monitoring device installation.
- All the necessary construction permits have been obtained.
- Work may be postponed or rescheduled due to unforeseen circumstances.
- Crews will return to the work zones in the future to perform maintenance on installed devices.
- For more information about upcoming station work please see [metrolinx.com/Ontarioline](http://metrolinx.com/Ontarioline) or sign up for the e-newsletter.

---

## **About the Ontario Line**

- 15.6-kilometre subway line that will make it faster and easier to travel within Toronto and beyond.
- 15 stops and more than 40 connections to other transit, including GO train, subway, LRT, streetcar and bus lines.
- Less than 30 minutes from one end of the line to the other.
- 28,000 fewer car trips each day.

#### **Contact us:**

Call us 24/7 at: [416-202-5100](tel:416-202-5100)

Write to us at: [ontarioline@metrolinx.com](mailto:ontarioline@metrolinx.com)

Find us on X, Facebook, and Instagram:

[@ontarioline](#)

Visit the website:

[www.metrolinx.com/ontarioline](http://www.metrolinx.com/ontarioline)

#### **Visit our community offices:**

**770 Queen Street East (near Queen & Broadview)**

General hours:

Mondays, Tuesdays, and Fridays: 9:00 a.m. to 5:00 p.m.

Wednesdays and Thursdays: 10:00 a.m. to 6:00 p.m.

#### **Thorncliffe Park:**

East York Town Centre  
45 Overlea Blvd., Toronto, ON M4H 1C3

Unit 153 (across from the Rogers store)

General hours:

Monday – Friday, 9 a.m. – 5 p.m.