

Ontario Line

Queen-Spadina

Construction Liaison Committee

October 1, 2024

 **METROLINX**



Agenda

Welcome

- Introduction
- Land Acknowledgment
- Safety Moment
- Action Items

Presentation

- Construction Update

Q/A and Discussion

- Community Artwork Program
- Community Engagement
- Contact Us



SAFETY MOMENT - BE AWARE WHILE COMMUTING

Whether you're taking the subway, streetcar, bus or train, safety is paramount. Here are quick tips for a safer rail commute:

- 1. Stay Back:** Always remain behind the yellow line while waiting for your vehicle to arrive.
- 2. Mind the Gap:** Watch your step and be mindful of the gap between the platform or road and the vehicle.
- 3. Hold On:** Always grip handrails or bars while the vehicle is moving to prevent falls.
- 4. Stay Alert:** Be aware of your surroundings and report any suspicious activity or items to transit staff.
- 5. Respect Personal Space:** Avoid crowding fellow passengers and keep bags clear of walkways to prevent accidents.
- 6. Watch Your Step:** Be cautious when boarding or exiting, especially in adverse weather or low-light conditions.
- 7. Know Your Route:** Familiarize yourself with the transit system map and schedule to navigate confidently.



SEPTEMBER CLC ACTION ITEMS - COMPLETED

	ACTION ITEM	RESPONSE	STATUS
1	Metrolinx to provide update on July action items related to dust.	Metrolinx has liaised directly with members of the public who have raised dust concerns.	Complete

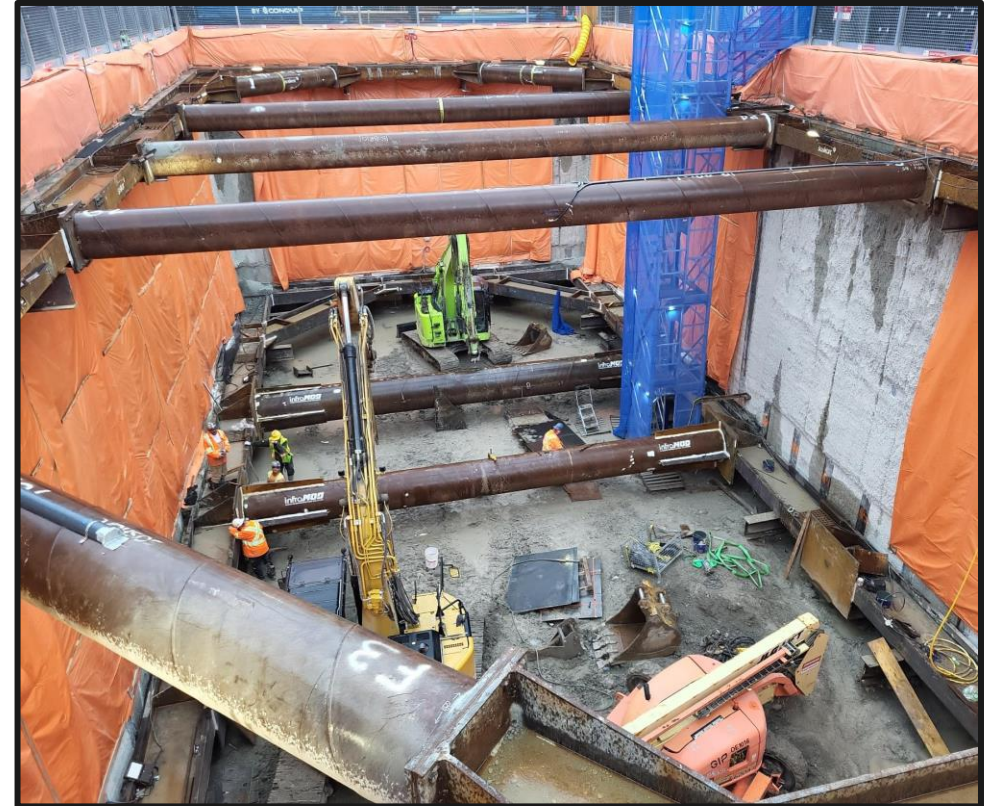
Construction Update: North Site

Excavation underway at future Queen-Spadina
North entrance



UPDATE ON CURRENT WORKS - FUTURE NORTH STATION

- Excavation is in progress at the North site and expected to continue to late Summer 2025.
- Current working hours for excavation work are Monday through Sunday, up to 24 hours a day.*
**The constructor may not always work extended or weekend hours.*
- Large cross beams are being installed spanning the width of the excavation shaft. These beams are called struts and walers.
- **Why is this process needed?** These beams are bracing systems, adding additional structural support for the excavation shaft. They ensure stability and strength at the top of the trench.



View of excavation work at the North site, September 2024

UPDATE ON CURRENT WORKS - FUTURE NORTH STATION

- Crews have installed a crane at the North site to support the next phase of excavation work.
- This type of crane is fixed to a permanent base, allowing the crane arm to move back and forth across the construction site, loading materials and delivering them to precise locations; in this case, above the future excavation shaft.
- **Why is this crane needed?** The overhead crane will lift equipment and hoist up the excavated material during the shaft and tunnel excavation.



Crane installation at Queen-Spadina North site

FUTURE NORTH STATION - ACCESS POINTS

North Site

- Trucks will enter via Spadina Avenue and exit on to Bulwer Street. Trucks will proceed eastbound on Bulwer to Soho Street to exit the neighbourhood.
- The parking lane along the Spadina Avenue will remain closed.
- Please use the north sidewalk along Bulwer or cross to the north at the pedestrian.



Site gate at Bulwer Street, Queen-Spadina North site

Construction Update: Future South Station



Excavation activities at Queen-Spadina

UPDATE ON CURRENT WORKS – FUTURE SOUTH STATION

- Excavation work is underway at the future South station site and is expected to continue through late summer 2025.
 - Work is expected weekdays from 7:00 a.m. to 11:00 p.m. and Saturdays 7:00 a.m. to 5:00 p.m.*
 - *Crews may not always work extended or weekend hours. Occasional overnight shifts may be required and will be notified.*
- Crews are excavating and installing supports to progress the excavation of the station site.
- Phase 1 marketing signage has been installed on Queen Street West.



Marketing signage along Queen Street West

UPDATE ON CURRENT WORKS - FUTURE SOUTH STATION

Focus on: Support of excavation and installation of capping beams

How does it work? Crews connect the exposed king piles with horizontal rebar, creating a trench above the piles to be filled with concrete.

Why are capping beams needed? Capping allows for even weight distribution at the excavation shaft. By capping the piles, the structural supports stay securely in place, and upcoming excavation efforts are reinforced both vertically and horizontally.



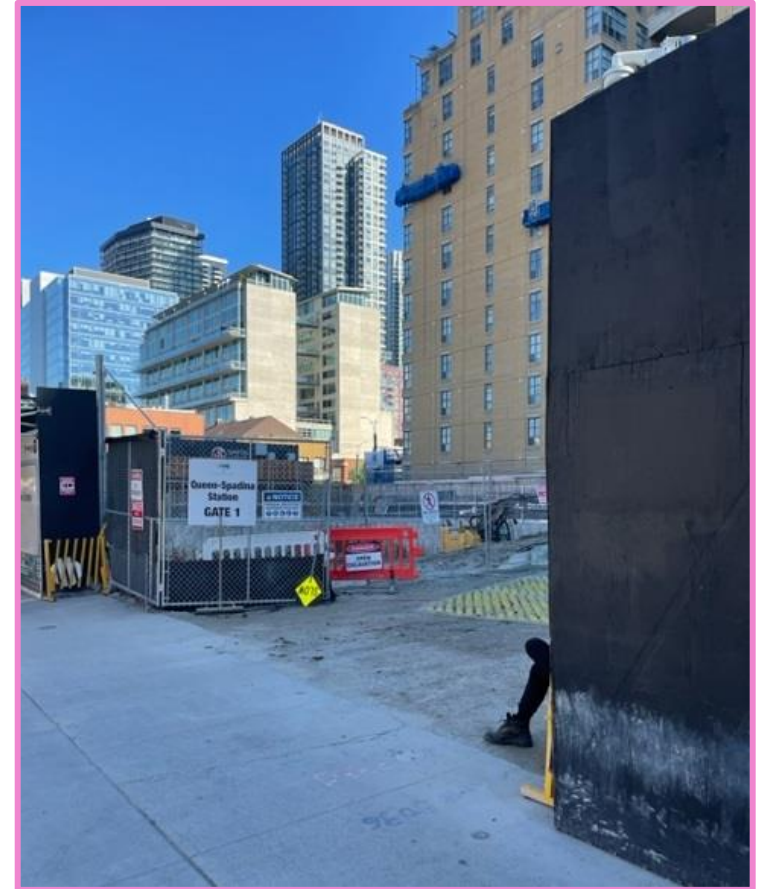
View of works in progress at the future South station site



FUTURE SOUTH STATION - ACCESS POINTS

South Site

- Trucks will enter the site via Queen Street West.
- This remains the primary entrance and exit to the site while gates are installed.
- In the future, trucks will exit via one of two routes: Through the gate at the northeast side of the work zone on Spadina Avenue or through the gate at the south end of the work zone onto Graffiti Alley and then out to Spadina Avenue, travelling south.



Current south site access point

Managing Impacts to the Community

What to expect

During excavation work, the community can expect:

- Noise from excavation equipment, loading of excavated material on to trucks.
- Equipment used during this operation includes cranes, excavators, dump trucks concrete pumps, and delivery trucks.
- Several trucks entering and leaving worksites daily, following a specified route. Trucks will use defined routes, and workers on site will work within dedicated timeframes for excavation activities.



View of the future South station site

Managing Community Impacts

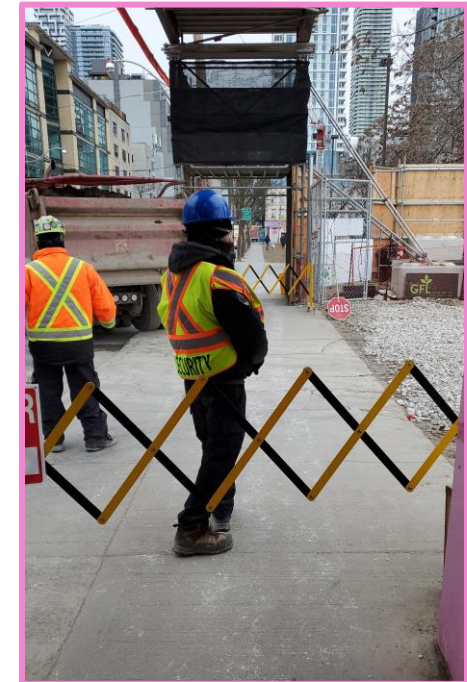
- Monitoring in place to actively track noise, dust and structural impacts.
 - Monitors trigger alarms for team to investigate at specified rates to mitigate impacts to the community and surrounding buildings.
- Plywood hoarding around the perimeter of the site to help reduce noise, as well as use of sound dampening blankets where possible to do so safely.
- Traffic control persons and tools like scissor gates to ensure safe movement of vehicles, pedestrians, cyclists and transit, when construction vehicles need to access the sites.
- Continuous loop truck routes, where possible, minimizing need for trucks to reverse.
- Site paving, street sweepers and wheel cleaning (mud mats) to help keep soil and sediment off city streets and sidewalks.



Examples of noise monitoring devices in



Example of mud mat installed



Example of scissor gate to aid in pedestrian safety

Upcoming work

2024 CONSTRUCTION LOOK-AHEAD*

Queen-Spadina

Time	Activity	Location	Details & Purpose
Fall/Winter	Ground Monitoring Point Installation	Various, inside and outside of site footprint	Monitoring points installed to track impact to ground, utilities, and other infrastructure throughout construction
Fall 2024 to late Summer 2025	Excavation	Future North and South station entrances	Excavation activities

***dates subject to change based on unforeseen circumstances*

Community Art Work

Community Artwork Program

Program timeline

Timing	Activity	Details & Purpose
July - August 2024	Capturing Community Feedback	Survey to capture public feedback; survey promoted via on-the-ground marketing and CLC engagement. Survey responses being reviewed in real-time to start to identify potential partners and direction for artwork.
September 2024	Analysis and Reporting	Analysis of results by area and reporting; feedback to be shared with CLC groups in September 2024 to inform what we heard and share direction forward.
October - December 2024	Development and delivery of art	Work with artists / partners to develop and delivery artwork; timelines will vary by site and may change depending on the complexity and medium of artwork selected. Additional information on intended timelines to be shared with communities upon finalization of partners.

Community Engagement

Community Engagement

Staying connected during construction

Construction notices and updates

- Prepared and distributed prior to new / impactful construction work; contact us to be able to the distribution list.

Monthly CLC meetings

- Regular committee meeting to discuss upcoming works and share information.
- Our next CLC will take place November 5, 2024.

In-person and virtual consultation with residences and businesses

- Our door is open: share feedback concerns with us.

News, progress and information shared and concerns in the Ontario Line newsletter

- Sign up for regular updates and information.

Community Engagement

We are here for you

Metrolinx will keep the community, residents and businesses informed by providing project updates, seeking input and feedback, while addressing questions and concerns effectively and quickly.

Connect with us:

Bradley Naismith, Advisor, Community Engagement

Email OntarioLine@metrolinx.com

Telephone 24/7 @ 416-202-5100

Ontario Line e-newsletter @ Metrolinx.com/OntarioLine

Follow us on social media:

X / Facebook / Instagram @OntarioLine

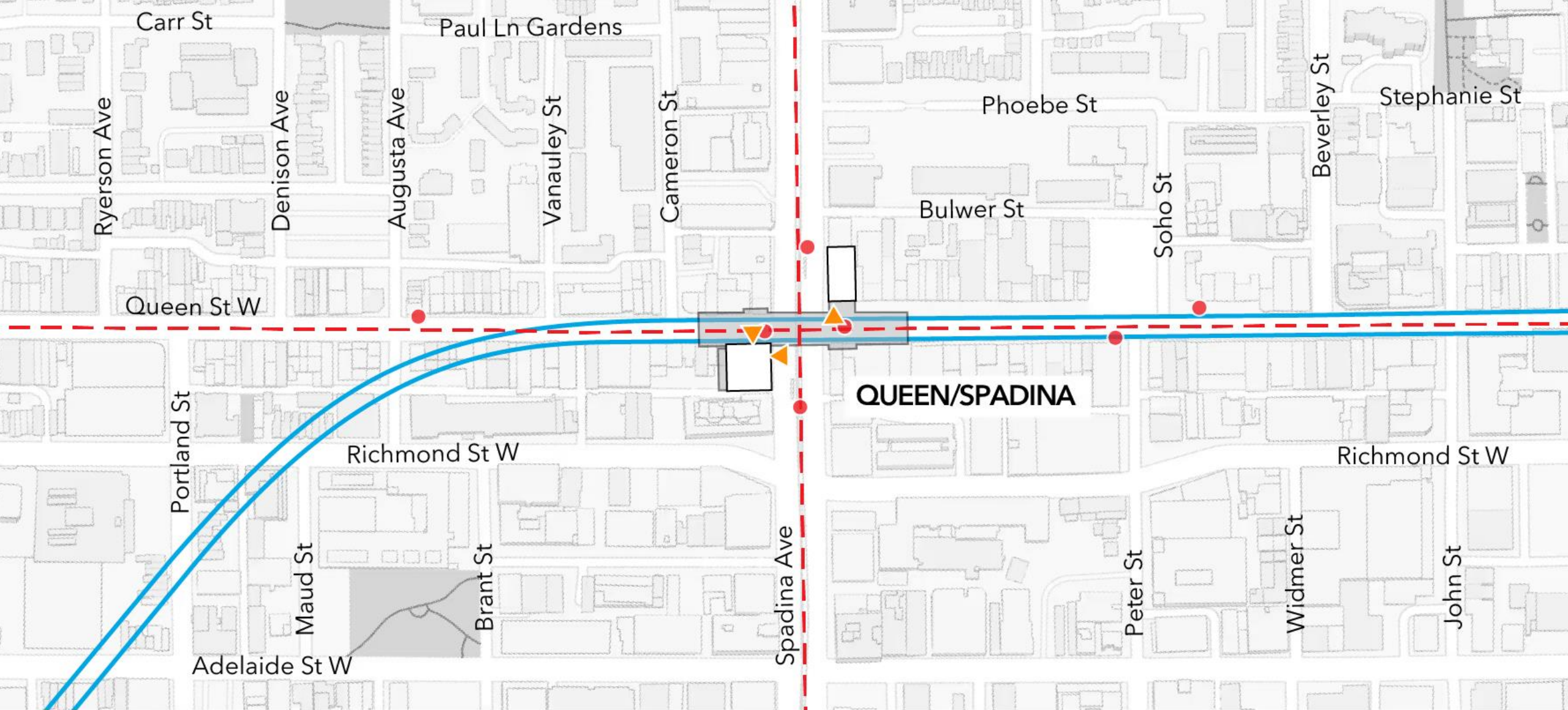


Paste the QR Code of Metrolinx
e-newsletter subscription

Discussion



Appendix



Queen/Spadina Station

- Tunnelled
- Streetcar Stop
- Station Building
- - - Streetcar Line
- ▲ Station Entrance
- Underground Station Area

Note: Heritage attributes will be conserved where possible.





Queen St W

Queen-
Spadina

QUEEN-SPADINA

7 AM - 10 AM
3 PM - 7 PM
MON - FRI
TTC VEHICLES
EXCEPTED

4511

DO NOT PASS
OPEN DOORS

Artist's rendering – subject to change. Transit-Oriented Community proposals not shown.



Artist's rendering – subject to change. Transit-Oriented Community proposals not shown.