

St. Clair-Old Weston GO Station

GO Expansion

GO service is expanding to serve you better – with more frequent service, more stations, cleaner technology, and more connections. Across the entire network, our goal is to deliver over 10,000 train trips a week – so you won't need a schedule because you know the next train will be coming soon.

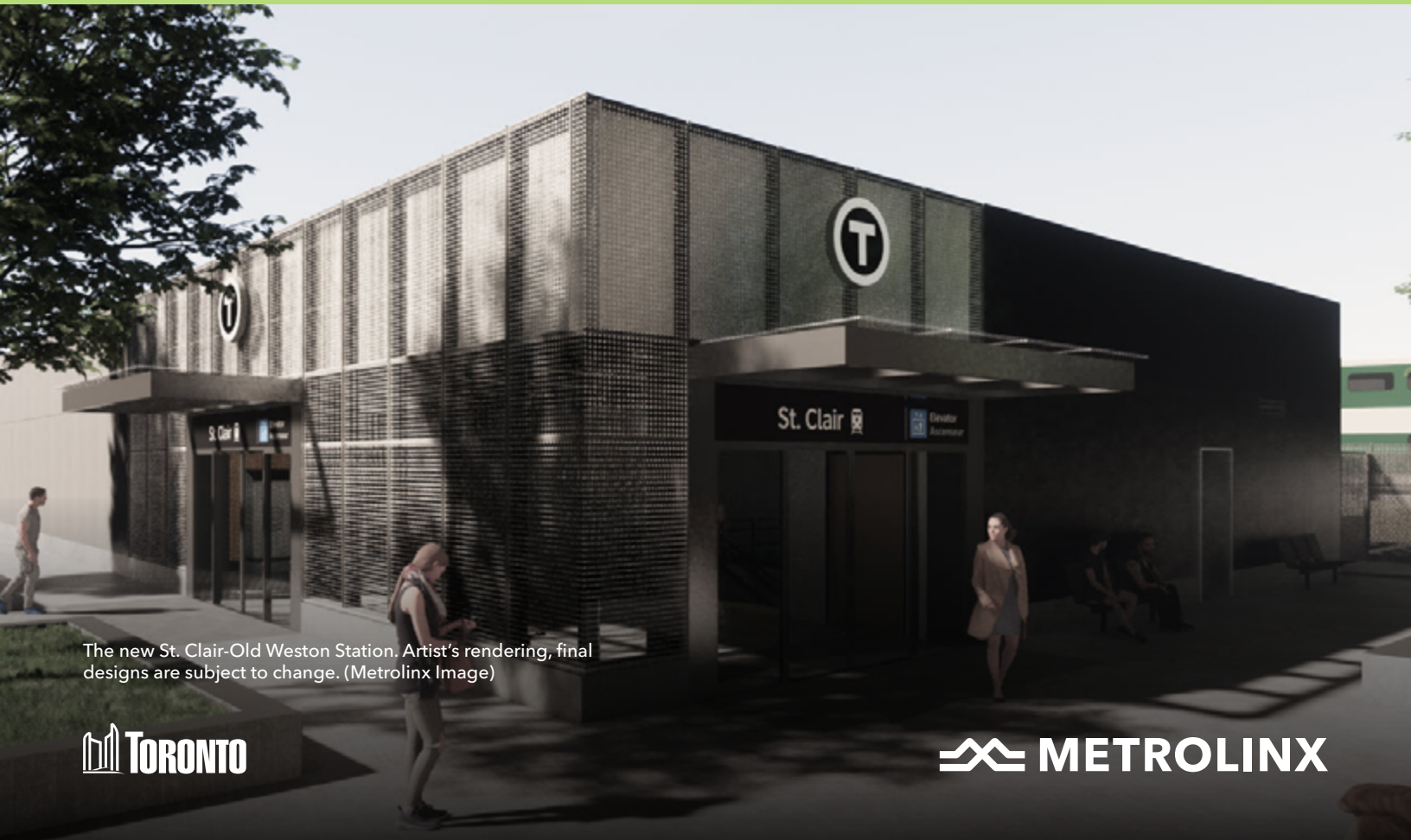
GO Expansion will transform the GO rail network from a commuter service into an all-day, rapid transit network.

SmartTrack

Complementing GO Expansion, SmartTrack is bringing five new GO rail stations to Toronto.

Leveraging roughly 40 km of pre-existing GO rail corridors within Toronto, SmartTrack will significantly expand the existing and planned transit network.

This means there will be new rail stations closer to where you live in Toronto, to help get you where you need to go in the city, and beyond.



The new St. Clair-Old Weston Station. Artist's rendering, final designs are subject to change. (Metrolinx Image)

St. Clair-Old Weston Station

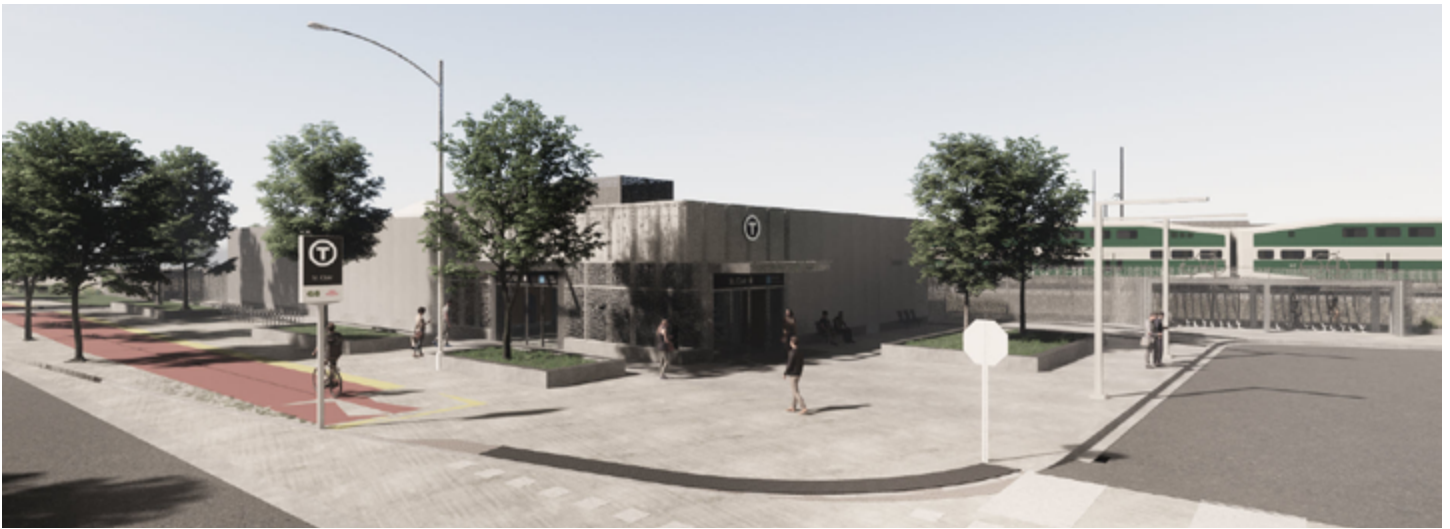
- St. Clair-Old Weston GO Station will be located on Union Street, north of St. Clair Avenue West, near the Stockyards District.
- The station will provide an additional stop on the Kitchener line, between Bloor GO Station and the future Mount Dennis GO Station.
- Customers will be able to easily connect to TTC streetcar service on St. Clair Avenue.
- The station will feature:
 - Two new station buildings and two new GO train platforms
 - Two tunnels connecting the east and west platforms
 - A new outdoor public space outside of the main station building that will feature landscaping and benches
 - Bike parking
 - Pedestrian access to Gunns Road and St. Clair Avenue West
 - Bus loop for transit connections

What you need to know

- Work at St. Clair-Old Weston GO Station is expected to begin in 2024.
- As part of the early works for this project:
 - Utility relocations will occur to support the station
 - In-corridor tree removals
 - Corridor widening activities, such as grading, noise wall relocation, and retaining wall construction
 - Track and signal work

These changes will support future service increases under the GO Expansion program.

Metrolinx will communicate with the community and customers to ensure they are aware of construction impacts. To ask a question about this project please e-mail our community engagement team.



The new St. Clair-Old Weston Station. Artist's rendering, final designs are subject to change. (Metrolinx Image)

SmartTrack Overview

SmartTrack will provide more reliable and convenient route options in Toronto to shorten commutes and increase quality of life for locals and visitors alike.

The new stations are projected to bring 110,000 new daily riders to the rail network, and will provide easy access to more than 52 major regional destinations located within 800 metres of transit stations, including major shopping centres, community facilities and educational institutions.

Contact Us:

Toronto West Community
Engagement Team

torentowest@metrolinx.com

416-202-6911

✕ @GOExpansion

Visit the website:

www.metrolinx.com/stclairoidweston

To subscribe to our regional
e-newsletter(s) please visit
metrolinx.com/subscribe

Disponible en français