

Start of excavation at the sites at Corktown

Expected start date: As early as mid-October 2024

Expected duration: Late 2025

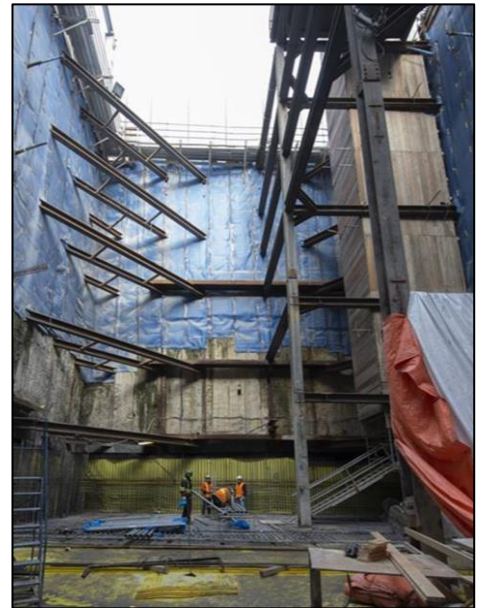
Hours of work: Weekdays (Monday - Friday), 7:00 a.m. to 7:00 p.m.

What is station excavation?

The support piles needed to stabilize the site are nearing completion. Now the team will begin to excavate the soil to a depth of nearly 30m. As spoils are removed, a shaft is created to lower materials into the pit for the future Ontario Line station at the sites.

What to expect

- Crews will be initiating excavation activities at the north and south sites, as early as mid-October 2024 and is expected to be complete by late 2025.
- Crews will begin to excavate the soil. As spoils are removed a shaft is created to lower materials into the pit for the future Ontario Line station at Corktown.
- Primary work hours for excavation taking place between 7:00 a.m. and 7:00 p.m. (Monday - Friday). *Additional working hours, including occasional Saturday shifts, may be required.
- Residents will see cranes, excavators, loaders, and dump trucks on-site during this work.
- Increased truck traffic will enter and leave worksites daily, following specified routes.
- To reduce impacts to residents and businesses in the area, mitigations are in place including air quality, noise and vibration monitoring, as well as noise walls, site hoarding, dampening of soils and mud mats for dust suppression.
- Work may be postponed or rescheduled due to unforeseen circumstances.
- All necessary permits have been obtained.



About the Ontario Line

- 15.6-kilometre subway line that will make it faster and easier to travel within Toronto and beyond.
- 15 stops and more than 40 connections to other transit, including GO train, subway, LRT, streetcar, and bus lines.
- Less than 30 minutes from one end of the line to the other.
- 28,000 fewer cars on the road each day.

Contact us:

Call us 24/7 at: [416-202-5100](tel:416-202-5100)

Write to us at: ontarioline@metrolinx.com

Find us on X, Facebook, and Instagram:

[@ontarioline](#)

Visit the website:

www.metrolinx.com/ontarioline

Visit our community offices:

770 Queen Street East (near Queen & Broadview)

General hours:

Mondays, Tuesdays, and Fridays: 9:00 a.m. to 5:00 p.m.

Wednesdays and Thursdays: 10:00 a.m. to 6:00 p.m.

p.m.

Thorncliffe Park:

East York Town Centre

45 Overlea Blvd., Toronto, ON M4H 1C3

Unit 153 (across from the Rogers store)

General hours:

Monday - Friday, 9 a.m. - 5 p.m.

Disponible en français sur demande. Si vous êtes intéressé, veuillez envoyer un courriel à OntarioLine@metrolinx.com