

**HAZEL MCCALLION LINE**

# **Construction Liaison Committee Meeting**

**Mississauga North and Brampton South  
January 2023**

# LAND ACKNOWLEDGEMENT

Let us take a moment to acknowledge that we are on the traditional territory of Indigenous Peoples including the Anishnabeg, the Haudenosaunee and the Wendat peoples.

We are all Treaty people. Many of us have come here as settlers and immigrants... in this generation or generations past.

Metrolinx declares its commitment to building meaningful relationships with Indigenous Peoples.

We acknowledge we have a responsibility to recognize and value the rights of Indigenous Peoples and conduct business in a manner that is built on the foundation of trust, respect and collaboration.

We acknowledge the historic and continued impacts of colonialization, the many broken promises and Treaties, and the need to work towards reconciliation with the original caretakers of this land... today and for future generations.

# AGENDA

Welcome & Introductions

Meeting Mandate

Safety Moment

Construction Progress

Community Construction Update

Community Engagement

Round Table Discussion



# OUR MANDATE

The Construction Liaison Committee is a communications forum to provide open, two-way communication and dissemination of information with stakeholders, elected officials, area residents and businesses related to construction for the Hazel McCallion Line including construction activities, short- and long-term impacts, steps being taken to address impacts and community engagement and outreach.

# Safety Moment

# SAFETY MOMENT

The way we navigate Hurontario Street is changing. As the project progresses with utility relocation and road widening, turning movements may be temporarily restricted. This will continue through to track installation when some turning movements will be permanently restricted.

We suggest that drivers plan their routes ahead to ensure they have access to and from properties. We are asking the community to stay alert and make safe movements when traveling the corridor.

We are aware that in some places motorists and pedestrians have been adjusting pylons to open access to a business or residence. Safety is our top priority and we want to ensure that the community and customers accessing their homes and businesses are safe.

Moving or relocating bollards can pose multiple risks, including the potential to impact traffic movements while vehicles navigate in and out of properties.

Hazel McCallion Line

**Keep on the  
right side of  
the tracks!**

Turn left only at  
traffic lights.



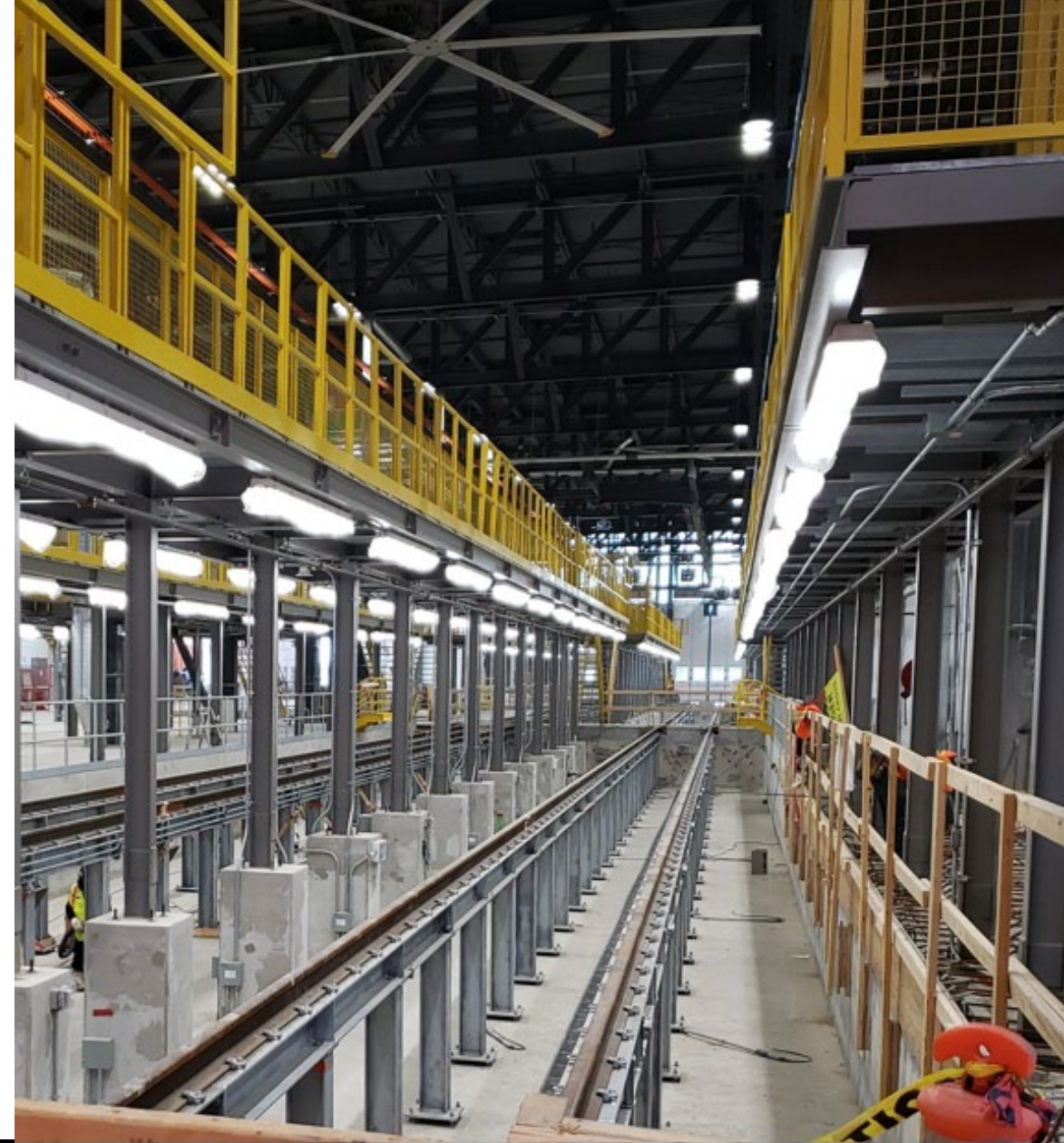
# Construction Progress

# CONSTRUCTION LOOKAHEAD

2023 is going to be the year we see the Hazel McCallion Line really take shape! Utility relocation work along the alignment is nearly complete, with some big pieces, like the 403 flyover, now underway.

In 2023, we anticipate the following work to wrap up:

- The OMSF building will reach substantial completion by February.
- Work on the LSW push box will be complete by the end of February with site restoration by Spring 2023.
- Construction of the Eaglewood bridge will be complete in Spring 2023.
- First canopy to be installed at the Matheson stop by end of Spring 2023.
- The Highway 407 bridge structure rehabilitation work will be complete in the next six months.





# ELEVATED GUIDEWAY

If you are driving around Square One you will have likely seen the start of construction on the 403 flyover, an elevated guideway that will connect the Hazel McCallion Line with the City Centre stop on Rathburn Road.

- Three of the ten vertical supporting walls for the elevated guideway are now complete.
- Ten piers out of a total of 17 have been completed, with two under construction. Five piers remain to be built.
- Piers are vertical structures that support the girders and bridge spans and are placed between abutments.

## ***FUN FACT!***

Girders are the main horizontal supporting beams of the structure, which will support smaller beams. There are more than 36 girders planned to be installed in the next six months.



# HURONTARIO LRT TRACK THE TRACK

**KILOMETERS  
OF TRACKWORK  
COMPLETED**

**16%**

**MAIN LINE  
(1.86KM 100%  
COMPLETED)**

OVERALL COMPLETION

**5%**

**OMSF  
(2.55KM 100%  
COMPLETED)**

OVERALL COMPLETION

**58%**




**MAIN LINE  
(7KM SINGLE BOUND GUIDEWAY OR 3.5KM  
OF GUIDEWAY THAT IS READY FOR TRACKS)**

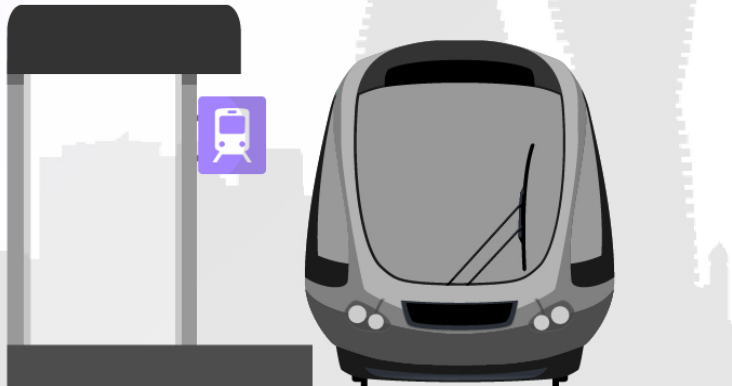
OVERALL COMPLETION

**16%**

GUIDEWAY CONSTRUCTION

## LEGEND - TRACK INSTALLATION PROGRESS

-  In progress
-  Upcoming
-  Completed



BRAMPTON GATEWAY TERMINAL

COUNTY COURT

RAY LAWSON

DERRY

COURTNEYPARK

BRITANNIA

MATHESON

BRISTOL

EGLINTON

CITY CENTRE

ROBERT SPECK

BURNHAMTHORPE

FAIRVIEW

COOKSVILLE GO STATION

DUNDAS

QUEENSWAY

NORTH SERVICE

MINEOLA

PORT CREDIT GO STATION

HWY 407

OPERATIONS,  
MAINTENANCE &  
STORAGE FACILITY  
(OMSF)

HWY 401

HWY 403

QEW

# INTERSECTION WORK

In order to complete the guideway, partial closures are needed along the corridor to safely install tracks within intersections along Hurontario Street.

## Completed

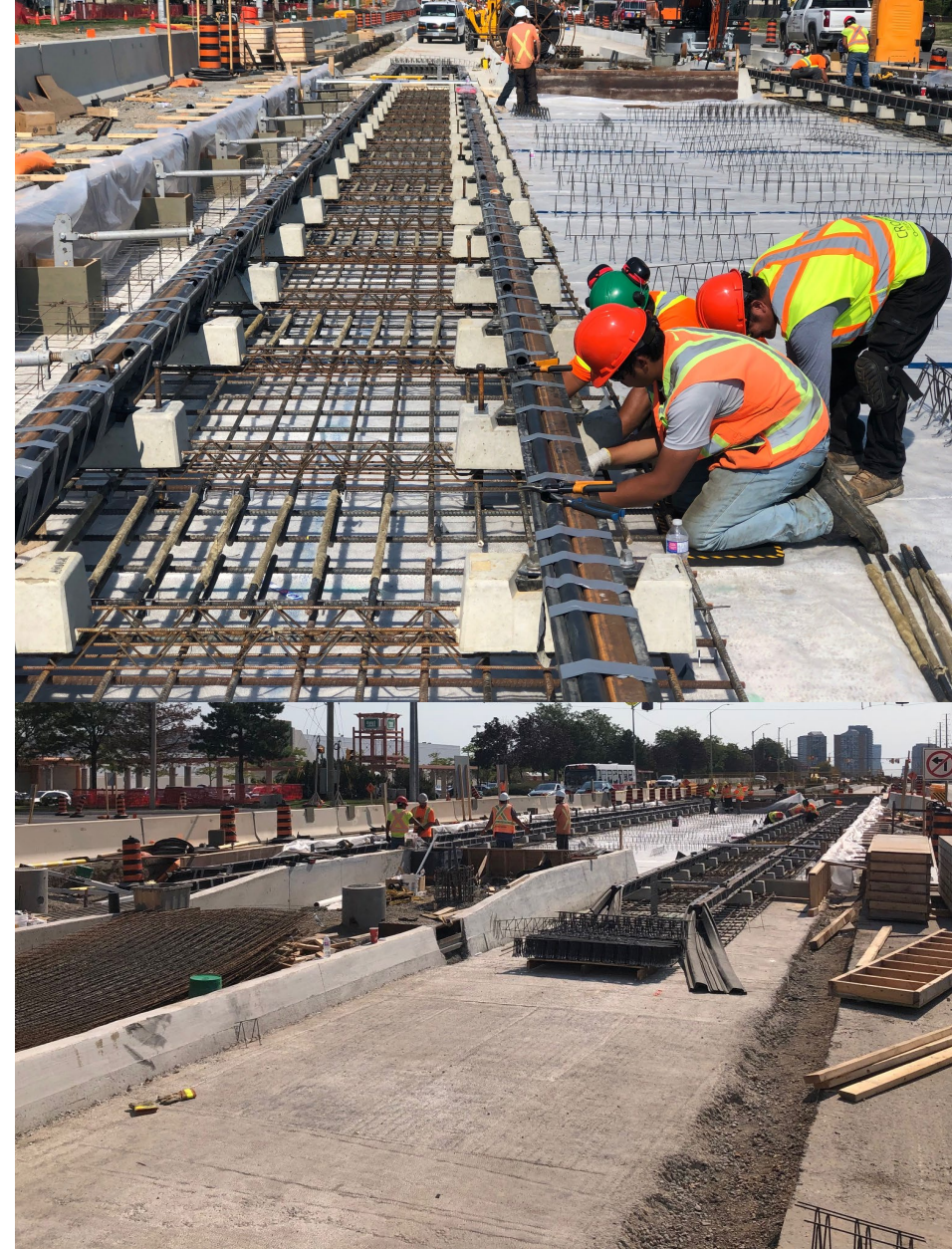
- Milverton Drive/Watline Avenue
- Sandstone Drive/Brunel Road
- Aldridge Street/Traders Boulevard
- Ambassador avenue
- Matheson Boulevard
- Kingsway Drive

## Ongoing

- Courtneypark Drive
- Barondale Drive
- Skyway Drive/Superior Boulevard

## Upcoming

- Longside Drive/Admiral Boulevard
- Derry Road
- Capston Drive / World Drive

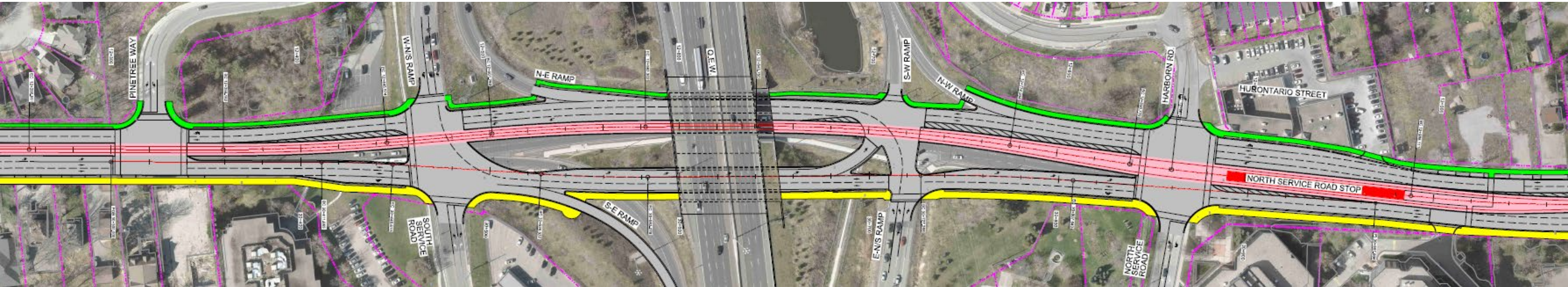


# QEW PUSH BOX

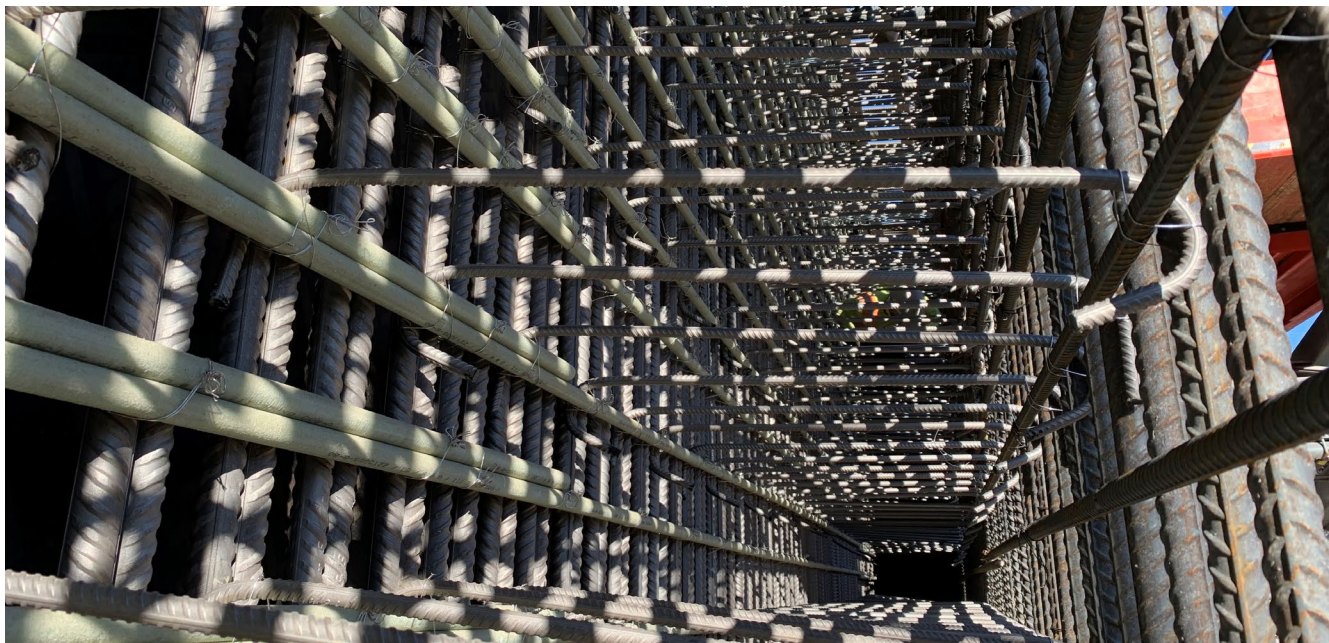
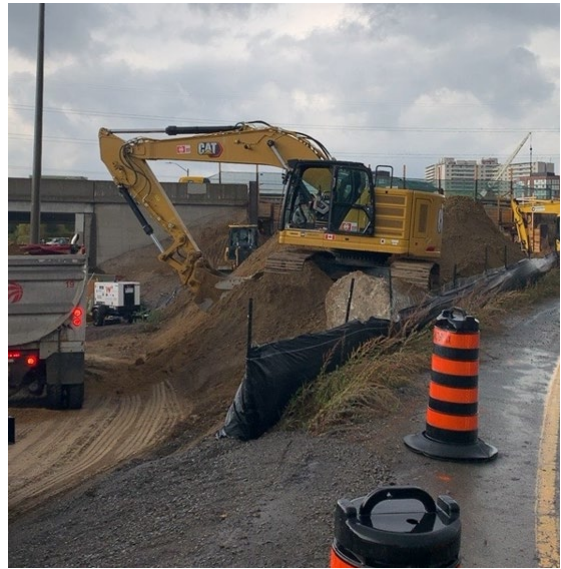
Late last year a permanent underpass for northbound traffic was installed under the QEW. This work required a weekend closure of the QEW at Hurontario Street, where drivers were directed to the off ramp, crossed Hurontario Street and used the on ramp to merge back onto the highway.

The future traffic configuration will have northbound traffic using the new underpass, while the LRT guideway and southbound traffic use the existing underpass.

The process involved using hydraulic jacks to push the large concrete structure, weighing more than 6,000 tonnes, into place under the QEW. The exterior dimensions are 17.5 m wide, 7.5 m tall, and 41.5 m long. This is longer than a Boeing 737 airplane.







Hurontario LRT



# Community Specific Update



# MISSISSAUGA NORTH

What's happening:

- Sidewalks over the 401 bridge will be widened for multi-use access.
- Parapet walls have been raised for additional safety.
- West sidewalk of the overpass is completed.
- The east side is currently under construction.

Track Installation:

- Hurontario Street from Ambassador Drive to Matheson Boulevard.
- Connecting line from OMSF to Hurontario Street.

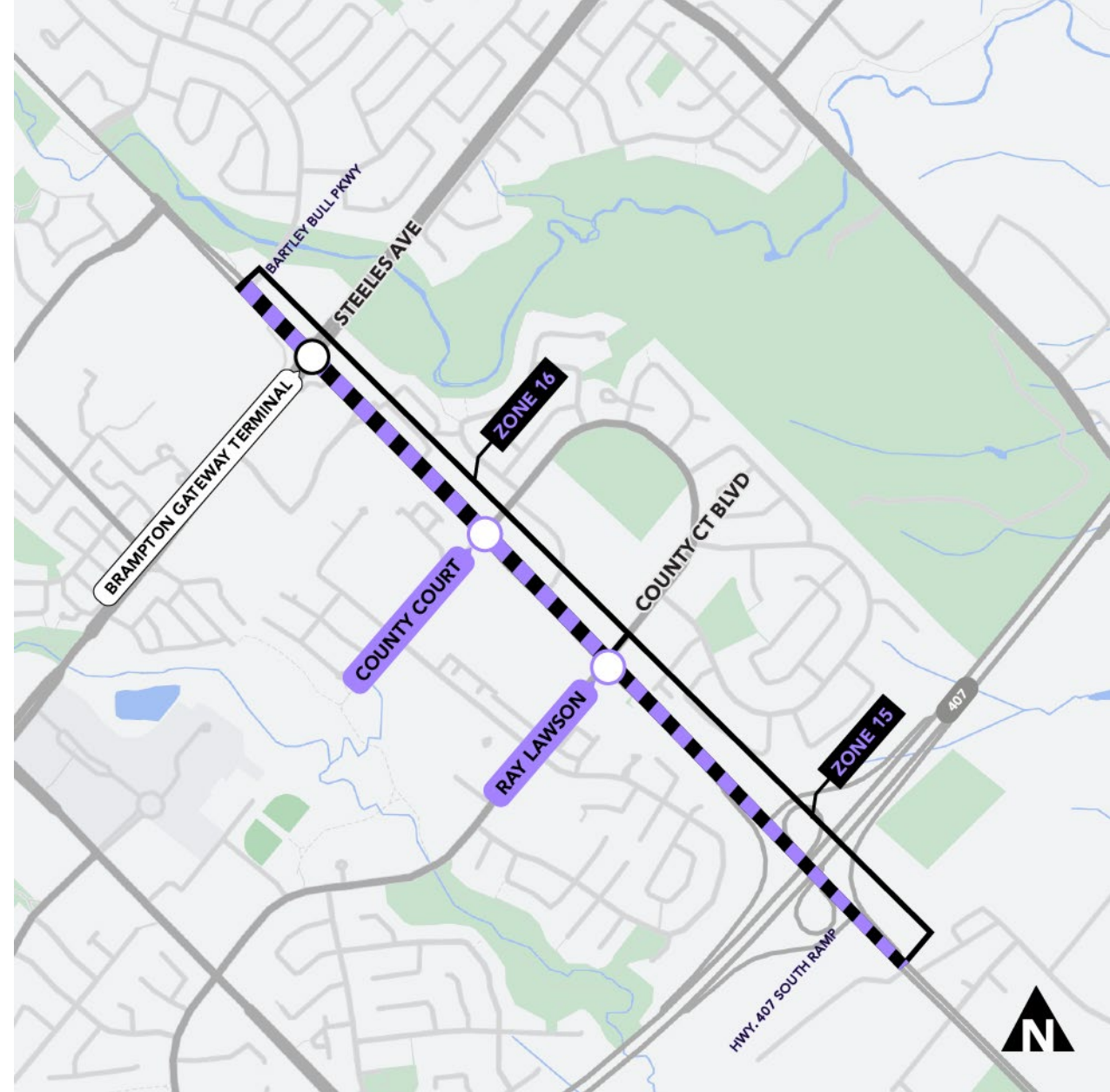




# BRAMPTON SOUTH

What's happening:

- Tree removals.
- Alectra infrastructure relocation work starting on the west side of Hurontario Street at Sir Lou Drive to Lancashire Lane.



# OMSF

The Operations Maintenance and Storage Facility (OMSF) is nearing completion!

Crews are in the process of installing proprietary equipment in the control room, as well as the finishing touches on the inside.

Outside, track installations continue for the connecting line to Hurontario.



# Community Engagement

# COMMUNITY SUPPORT

## Children's Aid Society

In December, our team paired with the Peel Children's Aid Society to help grant some holiday wishes. We sponsored both families and children by purchasing gifts to put under their trees including toys, cosmetic items, jackets and various gift cards to use at their leisure.

## Mississauga Food Bank

This month, Metrolinx and Mobilinx are pairing up to volunteer with the Mississauga Food Bank. With over 40 volunteers over 4 shifts, our team will be helping sort and pack donations, organize and stock shelves, and build and stack food boxes. These food boxes will be distributed throughout the food banks' 50+ agencies across Mississauga.



# COMMUNITY ENGAGEMENT

## Questions?

Ask us at [metrolinxengage.com](https://metrolinxengage.com)

Or contact us by phone, email, or on social media.

Stay up to date with Metrolinx projects in your region!  
[Metrolinx.com/peel](https://metrolinx.com/peel)



## Hurontario LRT Community Offices

Phone: 416-202-7500

Email: [peel@metrolinx.com](mailto:peel@metrolinx.com)

3024 Hurontario Street unit  
G12  
Mississauga, ON. L5B 4M4

17 Ray Lawson Blvd unit 9  
Brampton, ON. L6Y 5L7



**@HurontarioLRT**

### Sign Up

for Peel Region updates and more  
from Metrolinx

Email\*

### Subscribe

Subscribe for the latest news from Metrolinx. You can unsubscribe at any time. Your personal information is being collected under the authority of the Metrolinx Act, 2006 in order to provide you with email communications about Metrolinx services.

For questions, contact: Manager, Customer Contact, Metrolinx, 20 Bay St, Toronto, ON, M5J 2W3, (416) 869-3600.

# Round Table Discussion



# APPENDIX A: GLOSSARY OF CONSTRUCTION TERMS

Term	Definition
<b>Culvert</b>	Culverts are small channels that allow water to run under a road or railroad structure.
<b>Wet Utilities</b>	Examples of wet utilities are sanitary, storm water (rainwater), water main (potable water, fire hydrants)
<b>Dry Utilities</b>	Examples of dry utilities are power, underground conduits, fiber optics (telecommunications).
<b>Guideway</b>	The guideway is the structure the LRVs will operate at the HWY 403 crossing. This includes steel tracks, the concrete pads for tracks, and OCS poles. The elevated guideway is a structure with tracks raised above the street level, and civil works for the guideway includes anything below the grade of the guideway (duct banks for electrical cables, drainage etc.)
<b>Roads, Curbs, Sidewalks</b>	This involves preliminary works including drainage, catch basins, temporary paving, new curbs, sidewalks, and boulevards etc. Final paving and reinstatement occur as a part of the final landscaping and design package.
<b>Push Box</b>	An innovative method which uses hydraulic jacks & spreaders to move a cast-in-place concrete box carrying the entire underpass in a short period of time. It causes minimal disruption to surrounding traffic.
<b>RSS/Retaining Wall</b>	Retained Soil Systems Wall. The purpose of this wall is to retain soil in order to protect a change in grade.
<b>Track works</b>	Track works are at grade.



# APPENDIX A: GLOSSARY OF CONSTRUCTION TERMS

<b>Hydro Duct Bank</b>	A grouping of hydro cables buried underground or encased in concrete.
<b>Flood Wall</b>	A wall built to prevent inundation by high water.
<b>Caisson Wall</b>	Caisson (or secant) walls consist of drilled holes filled with concrete that forms continuous arrays of interlocking shafts that are periodically reinforced with vertical steel piles to create an excavation support system..
<b>Staging</b>	Staging indicates the set-up of fenced off work area and installation of temporary bus platforms as required on the corridor.
<b>Pole</b>	A structure used to support overhead lines.
<b>OMSF</b>	OMSF stands for Operations, Maintenance and Safety Facility of the Hurontario LRT. It is located just south of Hwy.407 at the border of Brampton and Mississauga.
<b>Girder</b>	A girder is a horizontal support beam used to strengthen bridges and other structures.
<b>TPSS</b>	TPSS stands for Traction Power Substation. They ensure a consistent level of power to the Light Rail Vehicles.
<b>French Drainage System</b>	The French Drainage System consists of a trench filled with gravel or rock or pipe to divert water away from an area. It is used to prevent water damage to building foundations. This will be installed at the OMSF site.