

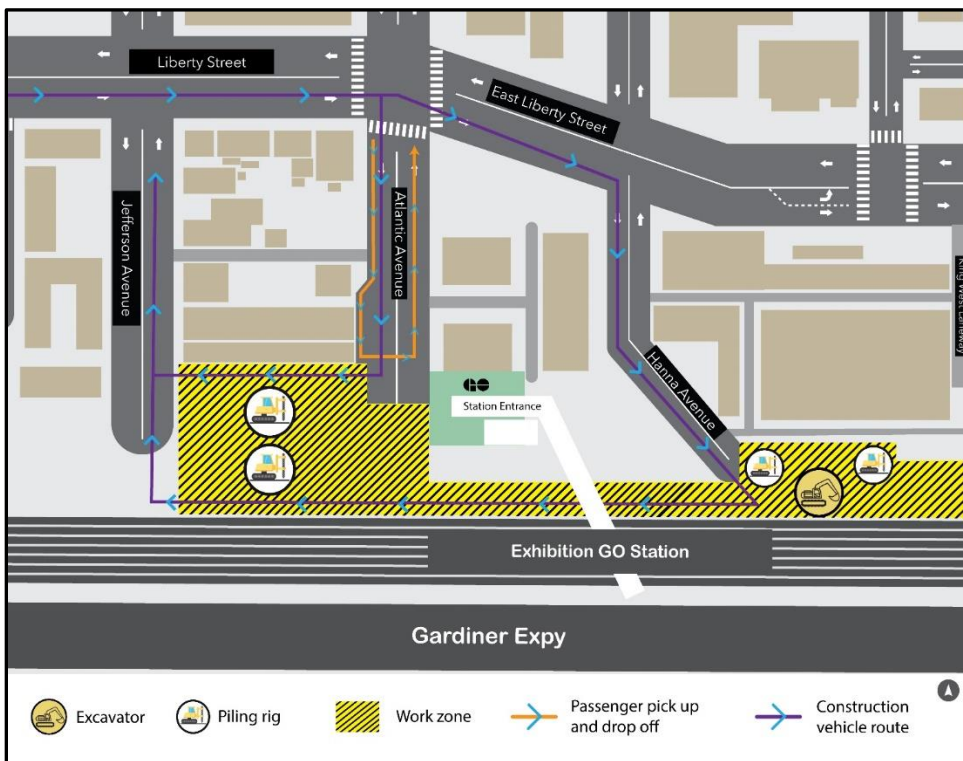
Exhibition Station Update Notice

Expected start date: As early as October 25, 2024

Construction hours of work: Monday to Friday (Weekdays) between 7:00 a.m. to 7:00 p.m.*

*Hours of work are subject to change. Extended evening hours or overnight works may be required and will be notified.

Map of work area:



What is happening?

The sidewalk and footpath to the GO platform from Atlantic Avenue will be closed as early as Friday, October 25, 2024. All passengers accessing the GO Station from Atlantic Avenue will use the new station entrance at Exhibition Station.

GO transit customers will use an elevator or stairs from the new station entrance to access bridge and tunnel options connecting Liberty Village to the south side of Exhibition GO, and Exhibition Place.

Construction fencing and hoarding at the foot of Atlantic Avenue will be moved north as support of excavation work for the new shared subway and GO Exhibition Station north entrance building starts.

The Ontario Line portal work east of Hanna Avenue will also transition from piling to excavation.

Passengers being dropped off in the vicinity of the north GO platform will notice a slightly widened roadway at the modified foot of Atlantic to accommodate passenger pickup and drop-off.

What to expect

- Long-term closure of the sidewalk and pathway leading to the GO platform
- Access to the Exhibition GO Station through a newly completed and fully accessible entrance
- Opening of a new passenger pickup and drop-off route on Atlantic Avenue
- Piling work between Atlantic Avenue and Jefferson Avenue, in support of a future GO/Ontario Line Exhibition Station. The piling work is planned to occur from 7:00 a.m. to 7:00 p.m., between Monday and Friday.
- Excavation work near the Toronto Police Services building at the foot of Hanna Avenue commencing in mid-November. The excavation work is planned from 7:00 a.m. to 7:00 p.m. between Monday and Friday.
- Construction trucks will enter the site south through Hanna Avenue and exit from Jefferson Avenue. A secondary access at Atlantic will be in place for occasional and limited use. The route is indicated on the above map.
- Work may be postponed or rescheduled due to unforeseen circumstances.
- All necessary construction permits have been obtained.
- For more information about upcoming station work please see metrolinx.com/Ontarioline or sign up for the e-newsletter.

About the Ontario Line

- 15.6-kilometre subway line that will make it faster and easier to travel within Toronto and beyond.
- 15 stops and more than 40 connections to other transit, including GO train, subway, LRT, streetcar, and bus lines.
- Less than 30 minutes from one end of the line to the other.
- 28,000 fewer cars on the road each day.

Contact us:

Call us 24/7 at: [416-202-5100](tel:416-202-5100)

Write to us at: ontarioline@metrolinx.com

Find us on X, Facebook, and Instagram: [@ontarioline](https://www.instagram.com/ontarioline)

Visit the website: www.metrolinx.com/ontarioline

Visit our community offices:

770 Queen Street East (near Queen & Broadview)

General hours:

Mondays, Tuesdays, and Fridays: 9:00 a.m. to 5:00 p.m.

Wednesdays and Thursdays: 10:00 a.m. to 6:00 p.m.

Thornccliffe Park:

East York Town Centre

45 Overlea Blvd., Toronto, ON M4H 1C3

Unit 153 (across from the Rogers store)

General hours:

Monday - Friday, 9 a.m. - 5 p.m.